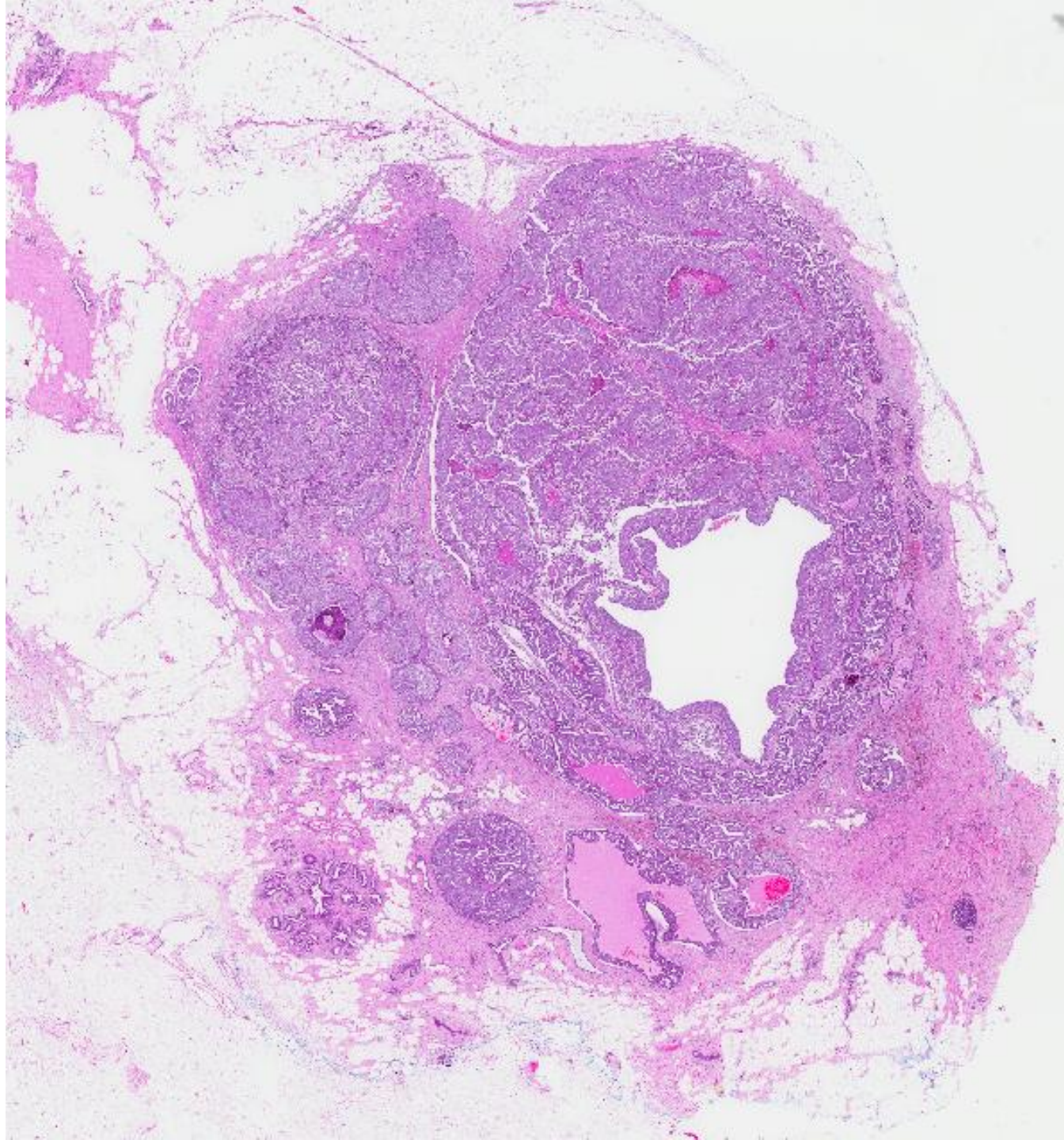


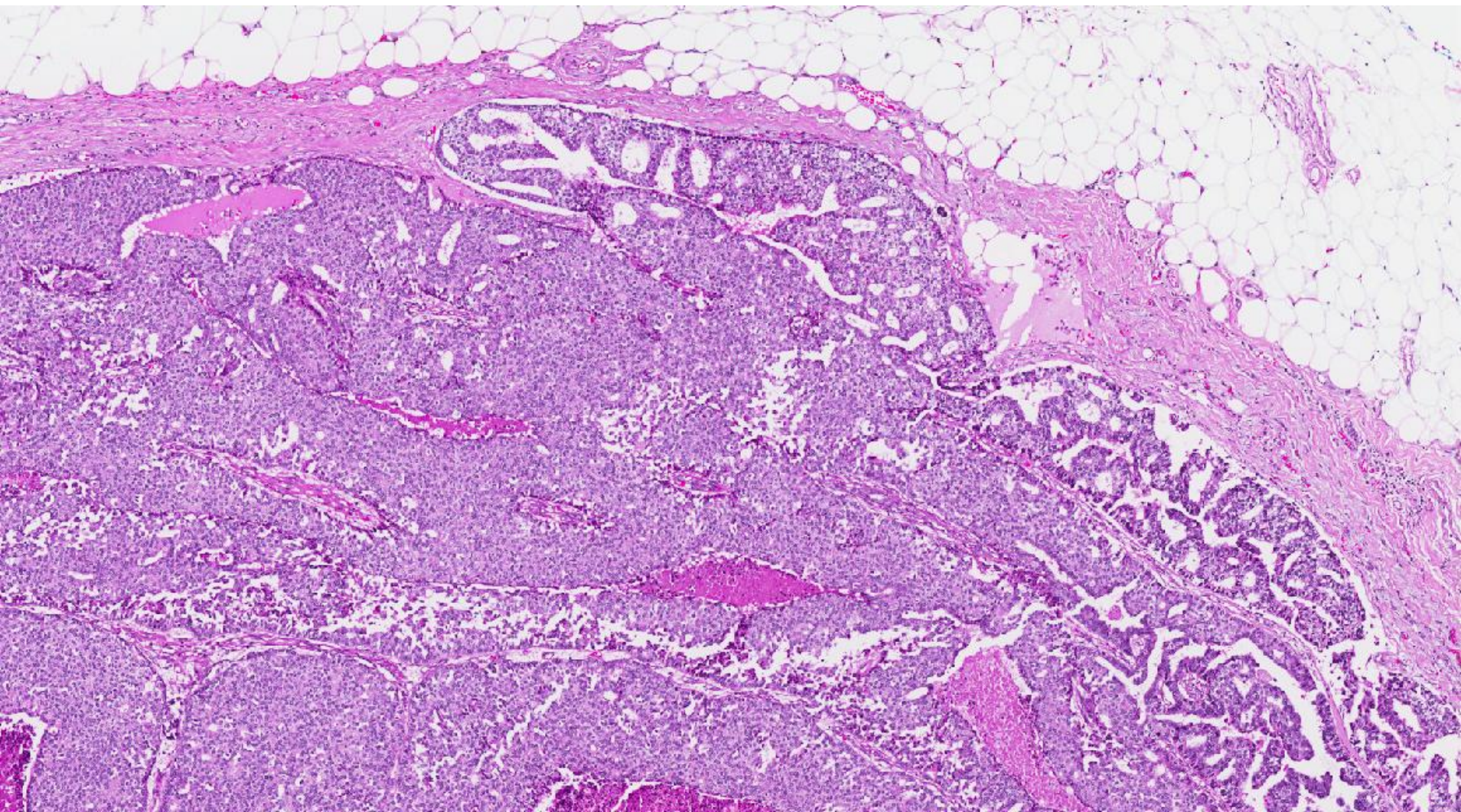
## Case 18

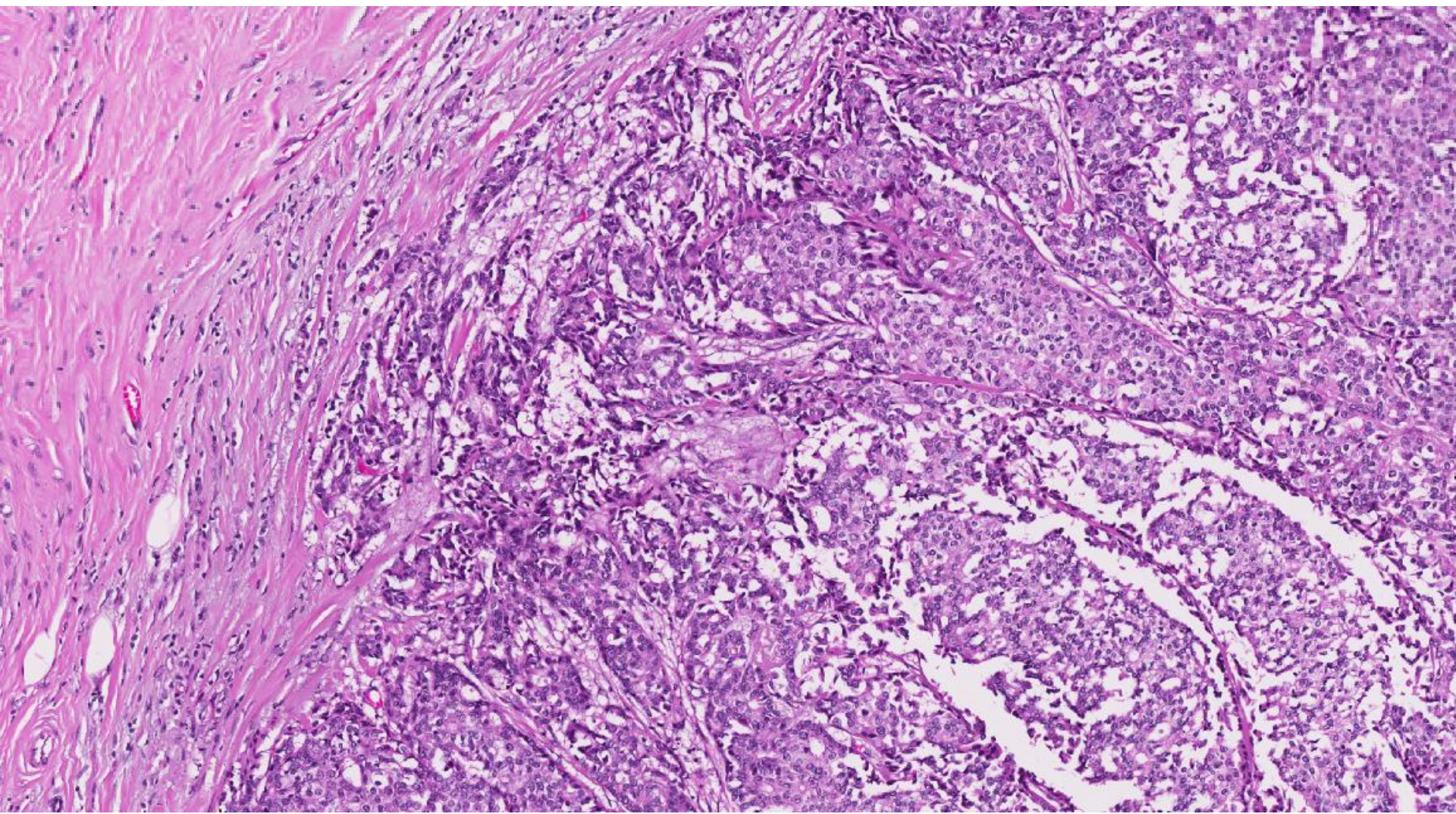
59 year old Chinese lady presented with a left breast lump, confirmed as malignant on biopsy.

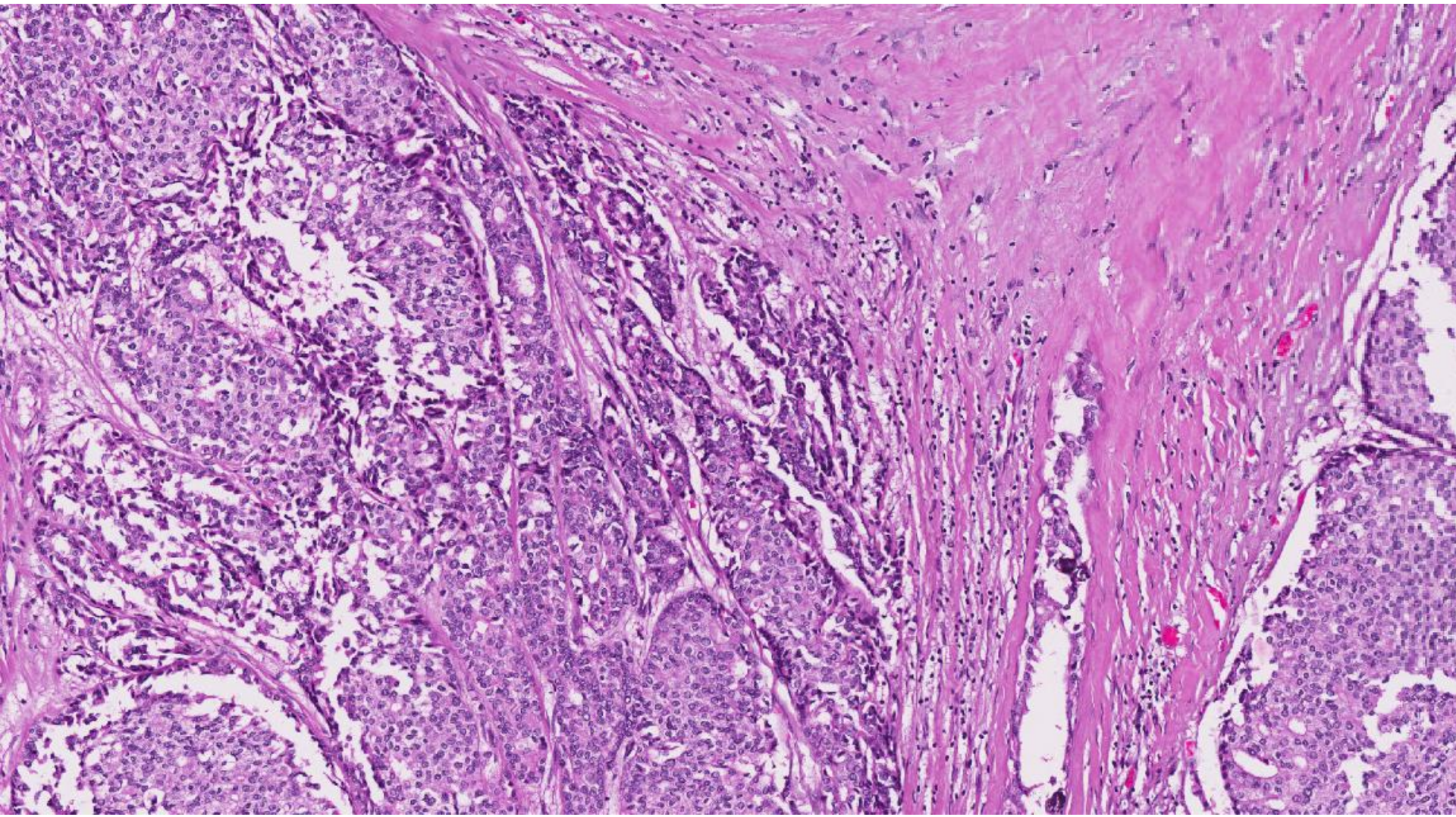
She underwent left mastectomy with sentinel lymph node sampling.

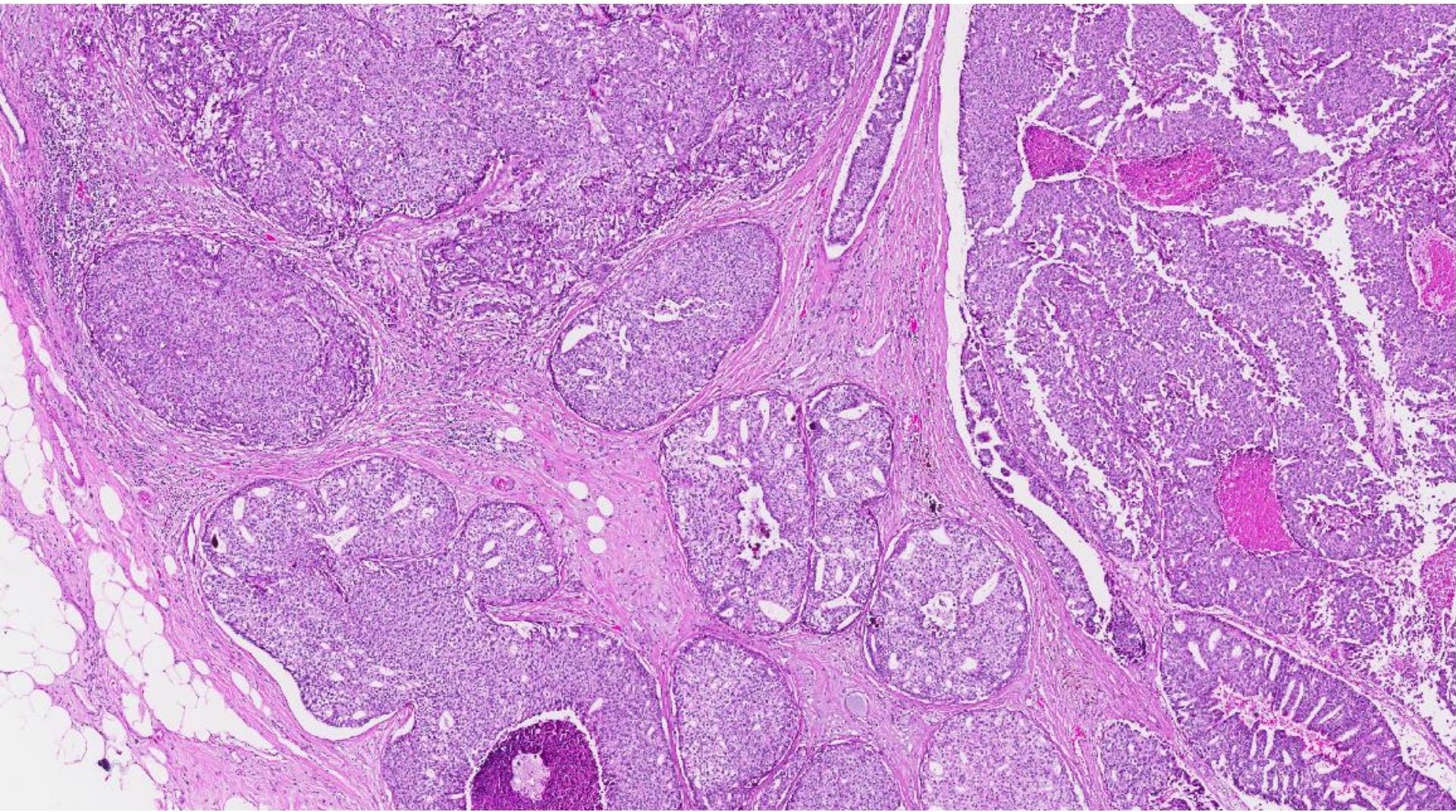
Section is from the left breast mass.

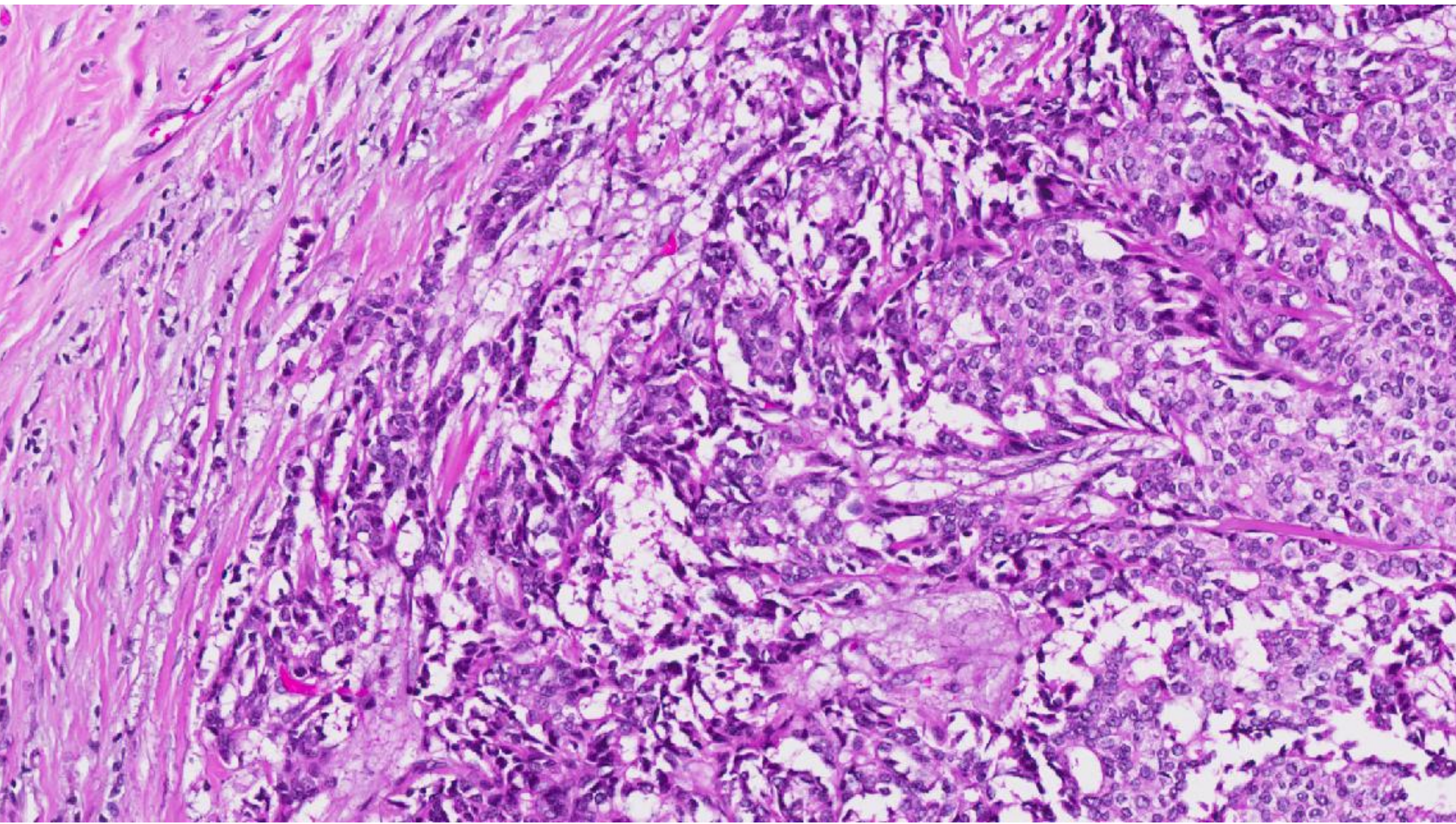




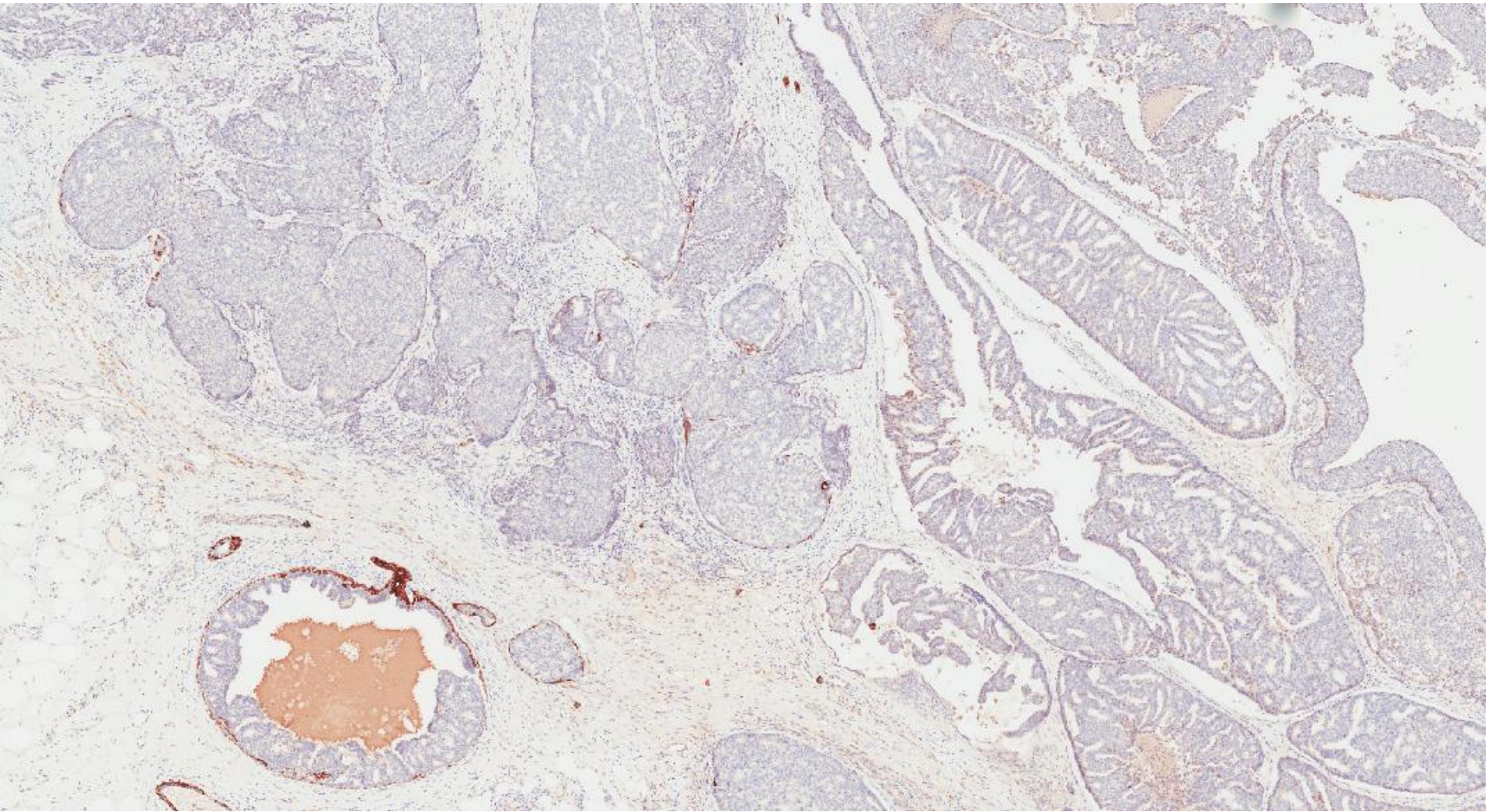






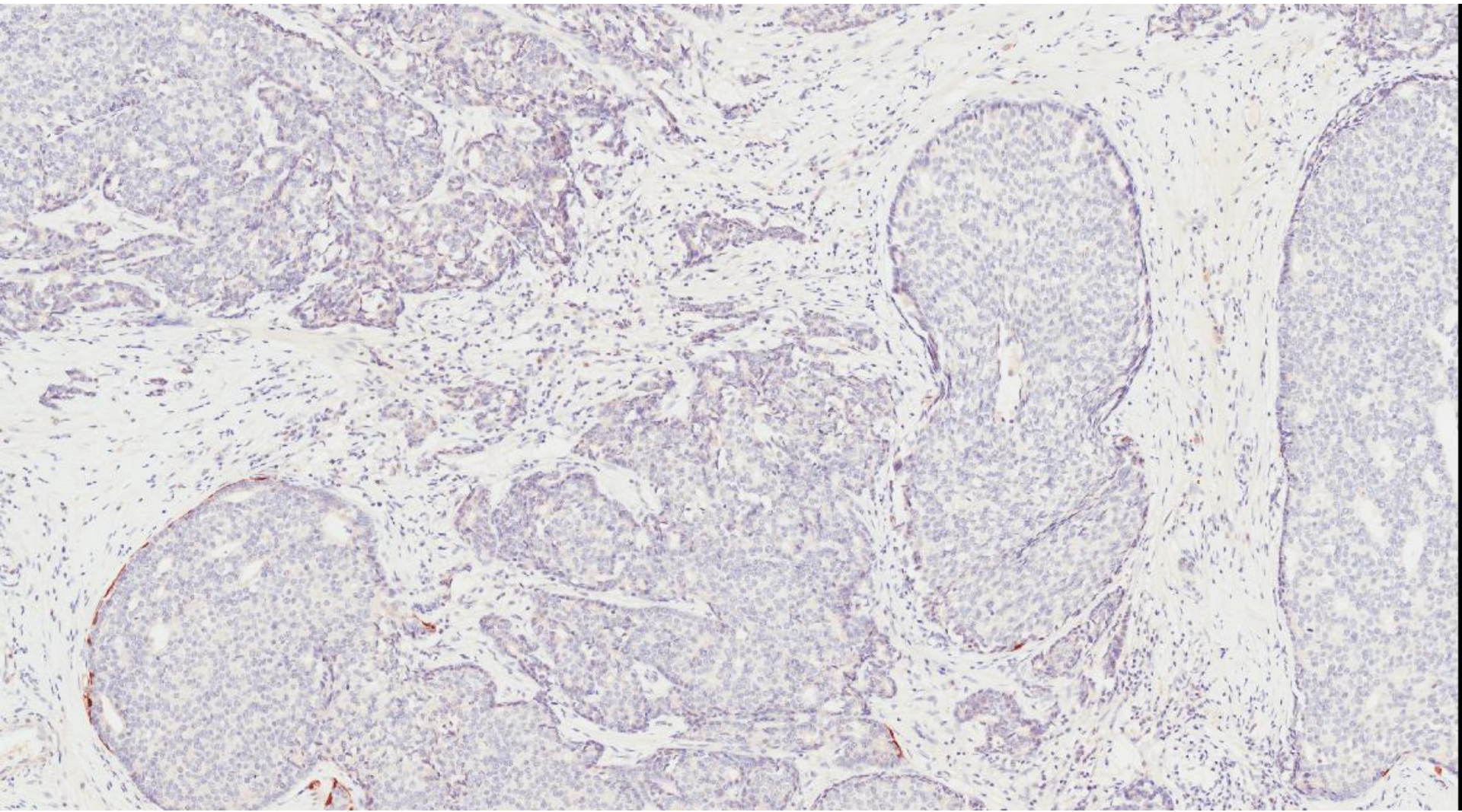


p63/CK5,6

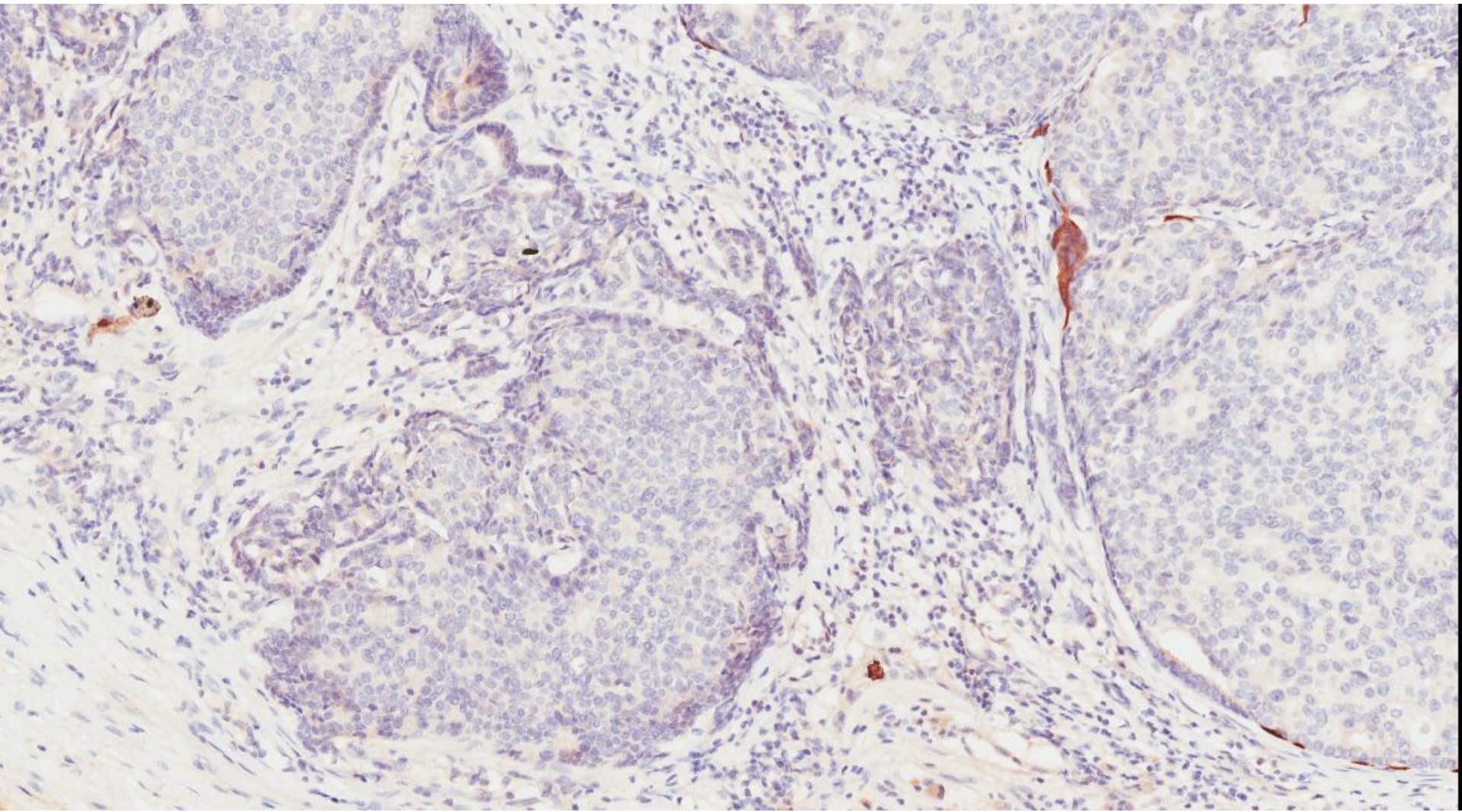




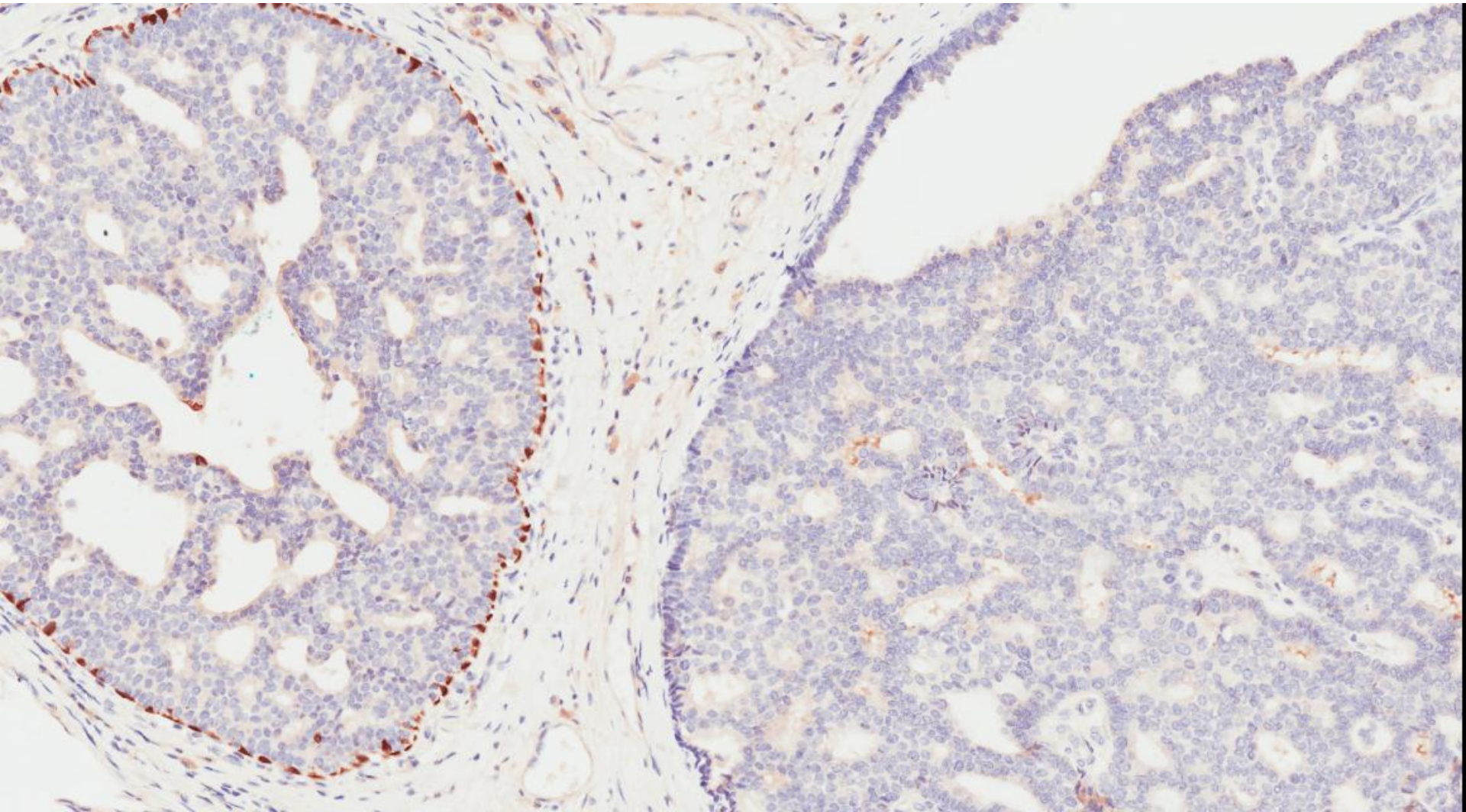
p63/CK5,6



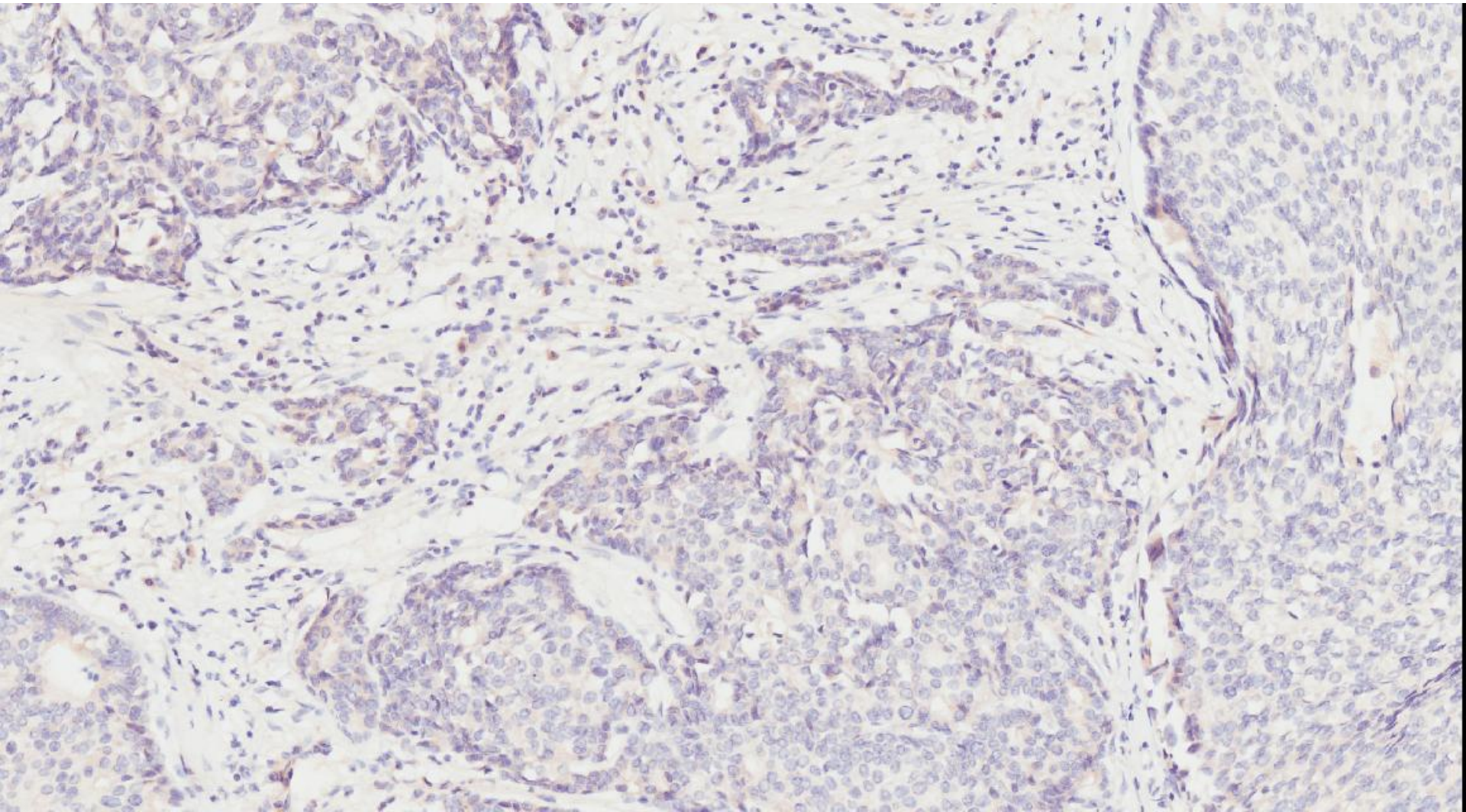
p63/CK5,6



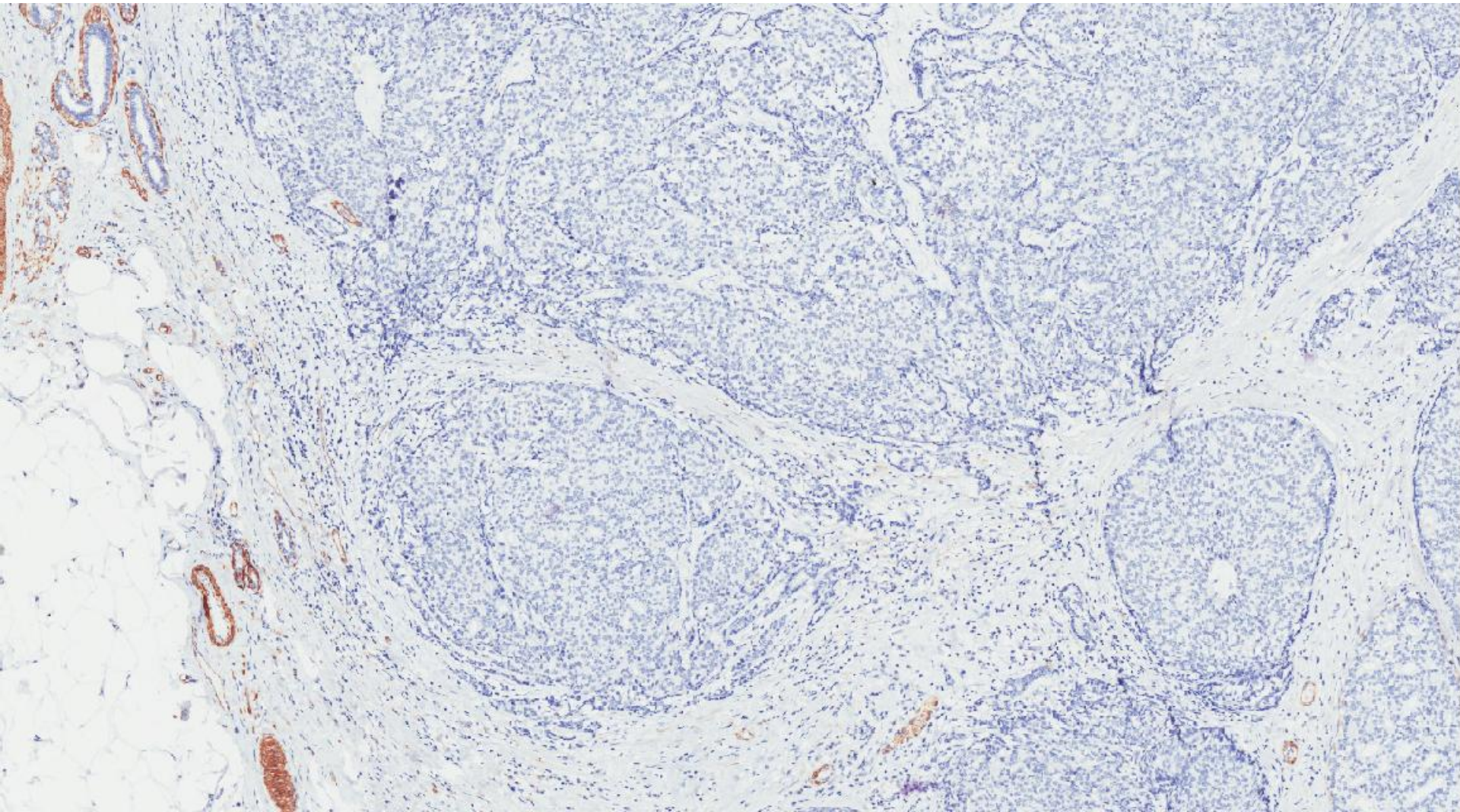
p63/CK5,6



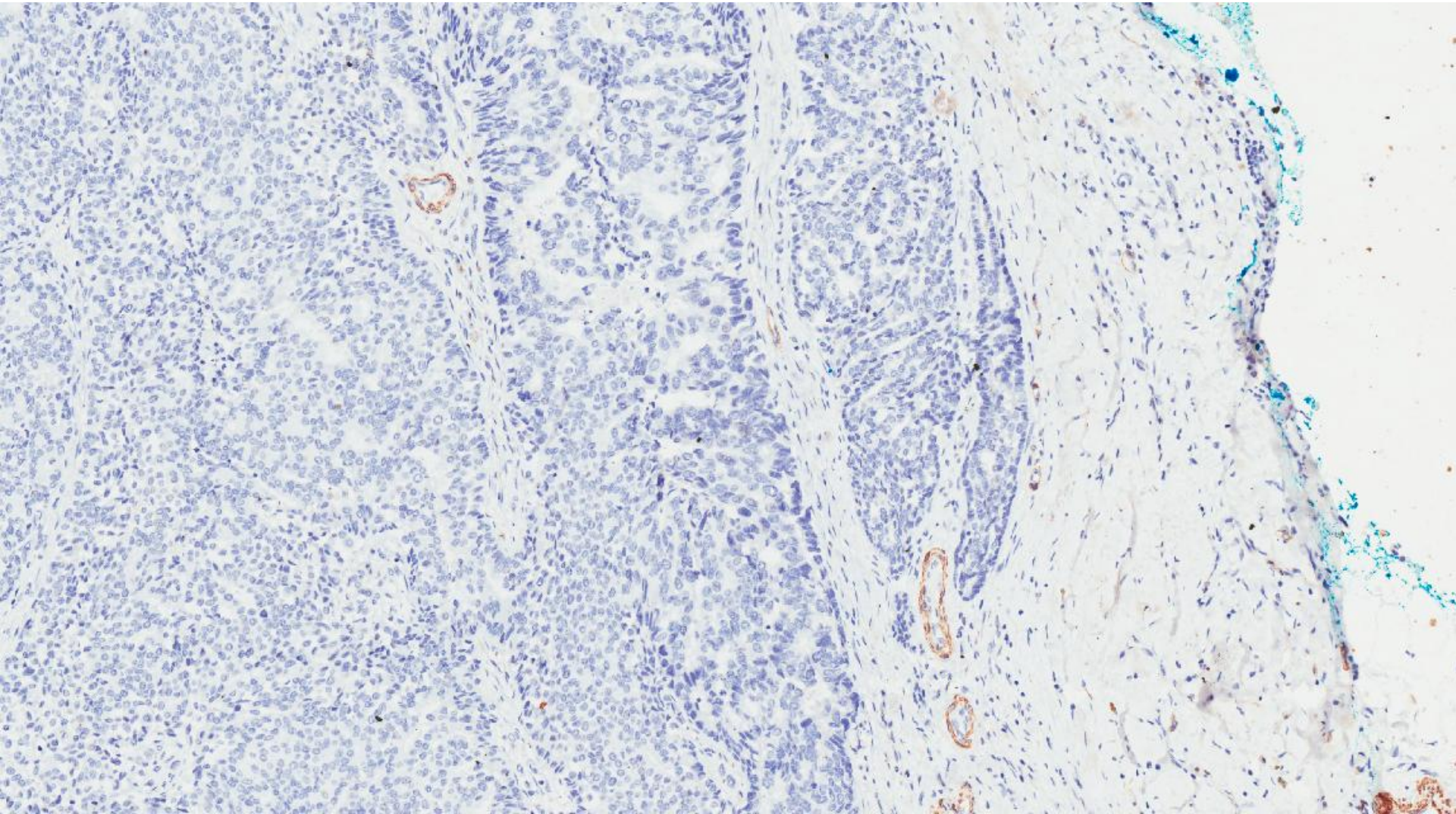
p63/CK5,6



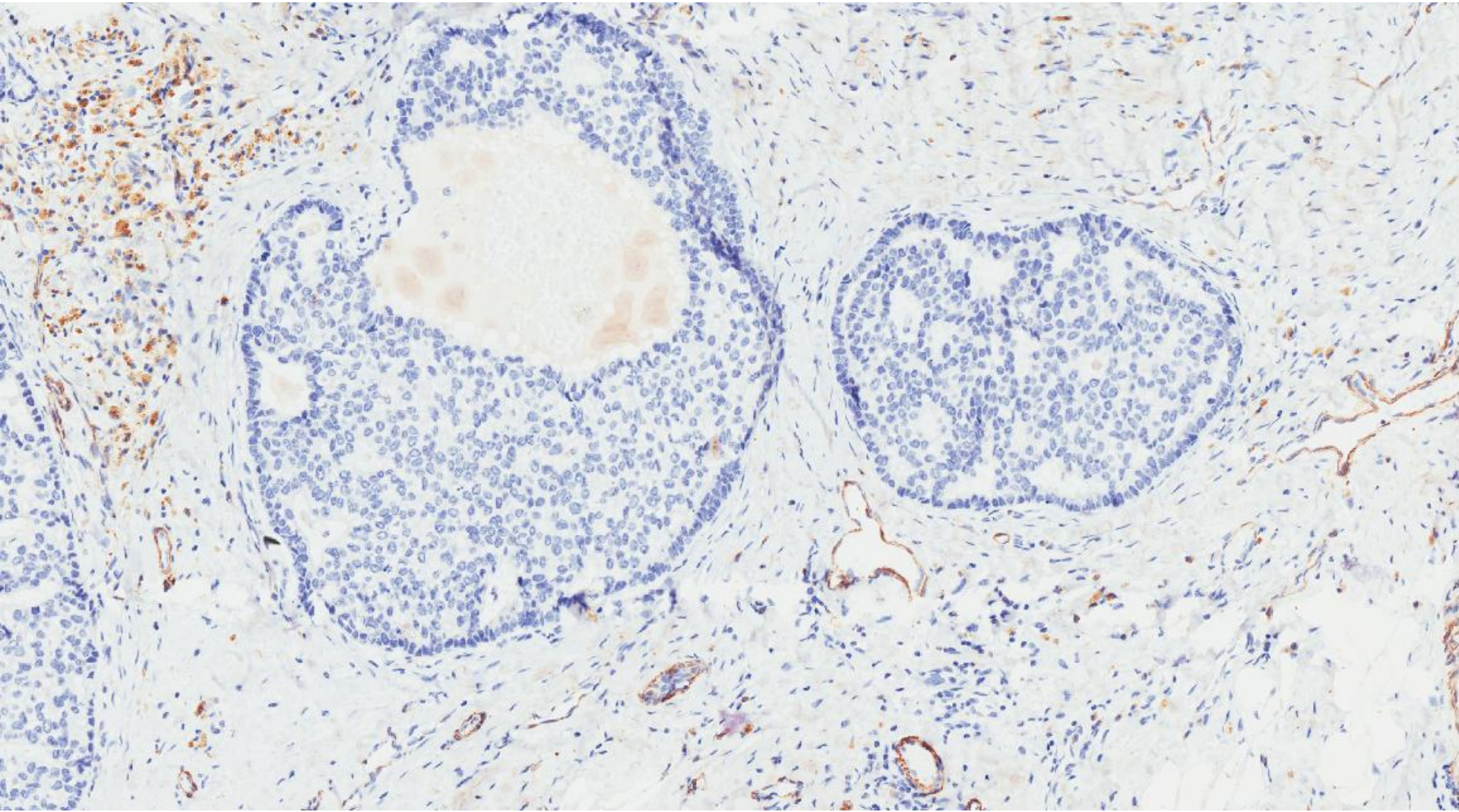
# SMMHC



# SMMHC



# SMMHC



# Diagnosis

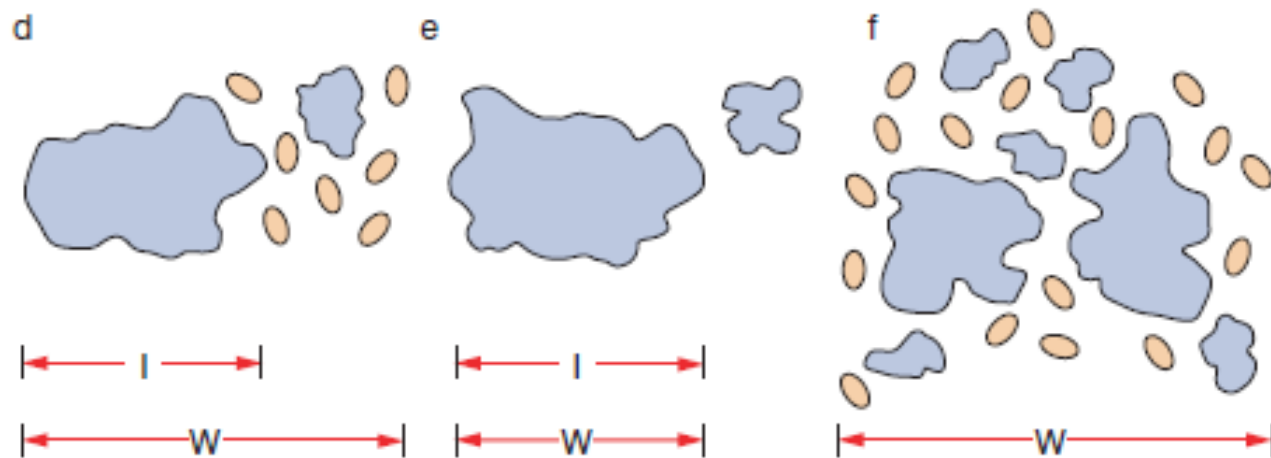
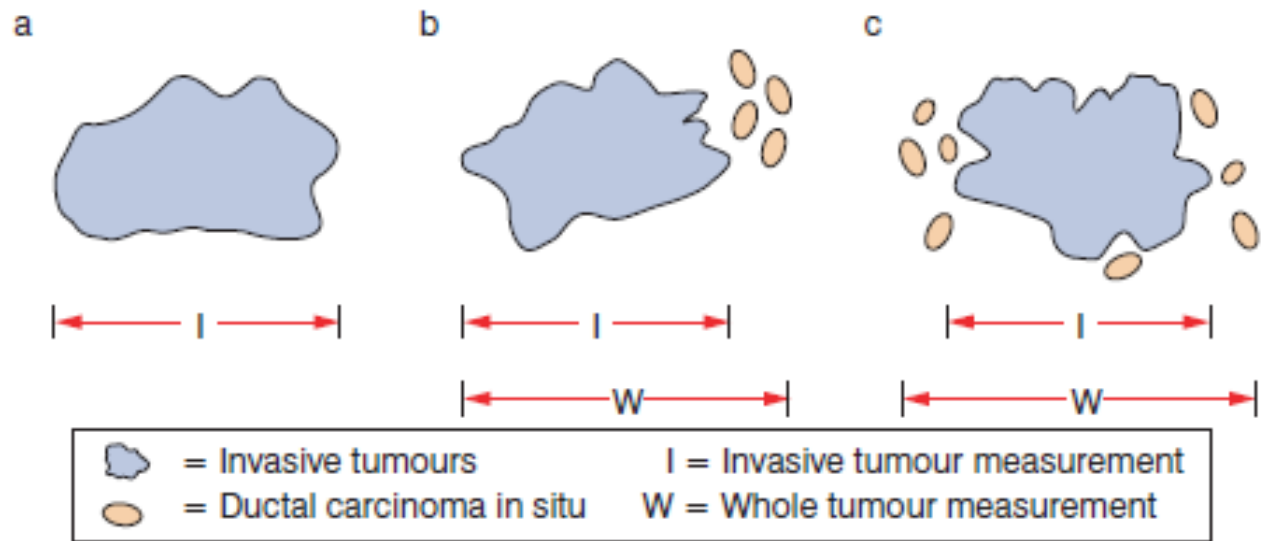
Invasive ductal carcinoma grade 2

Extensive ductal carcinoma in situ, intermediate and high nuclear grade, mixed (comedo, cribriform and papillary)

Whole tumour size 28 mm

Invasive tumour size 10 mm





In E, the satellite focus of invasive tumour is not included in the measurement  
 In F, the best estimate of the total size of the invasive components is given

**Figure 45** Measurement of carcinomas with an invasive component.