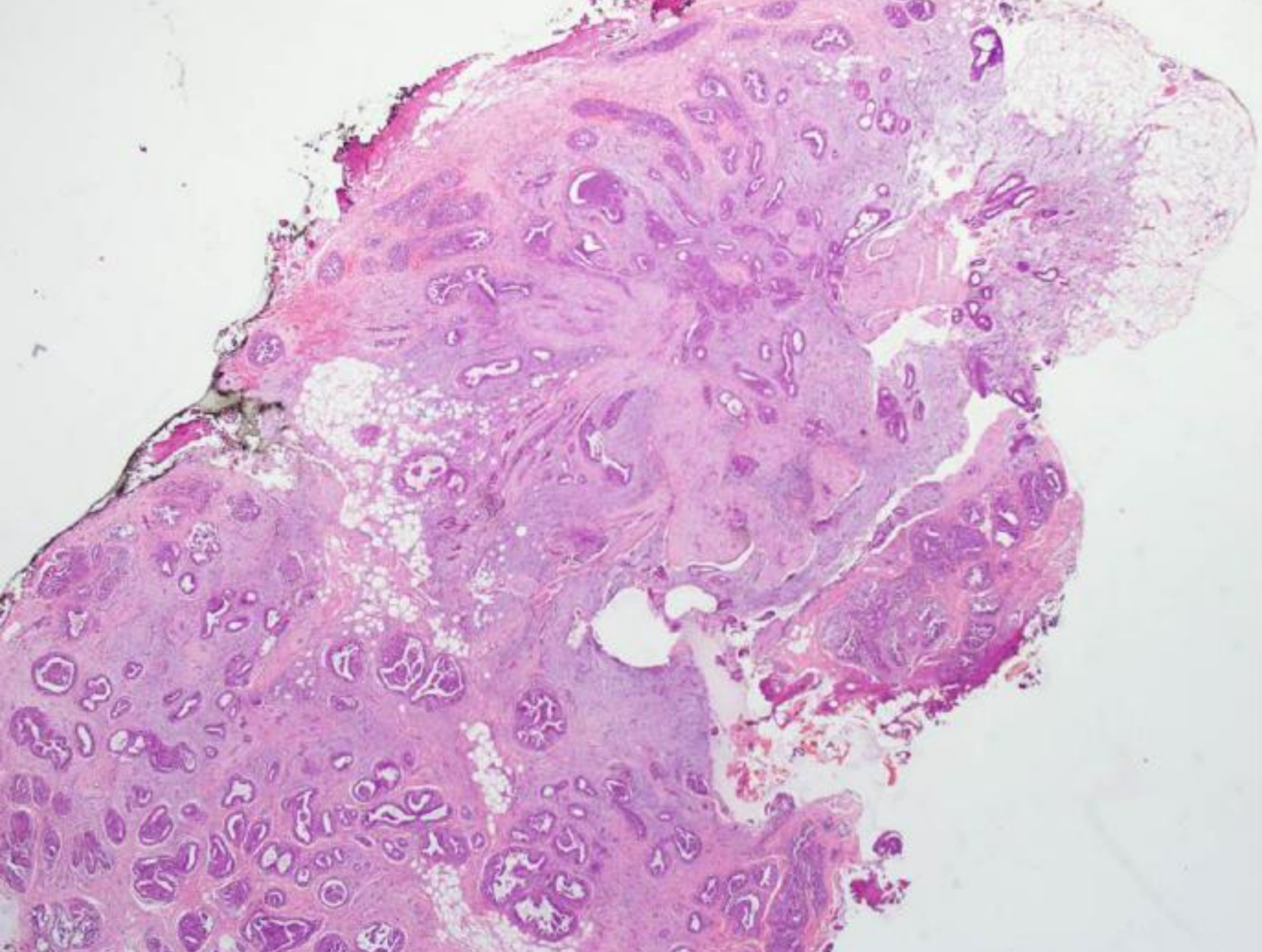
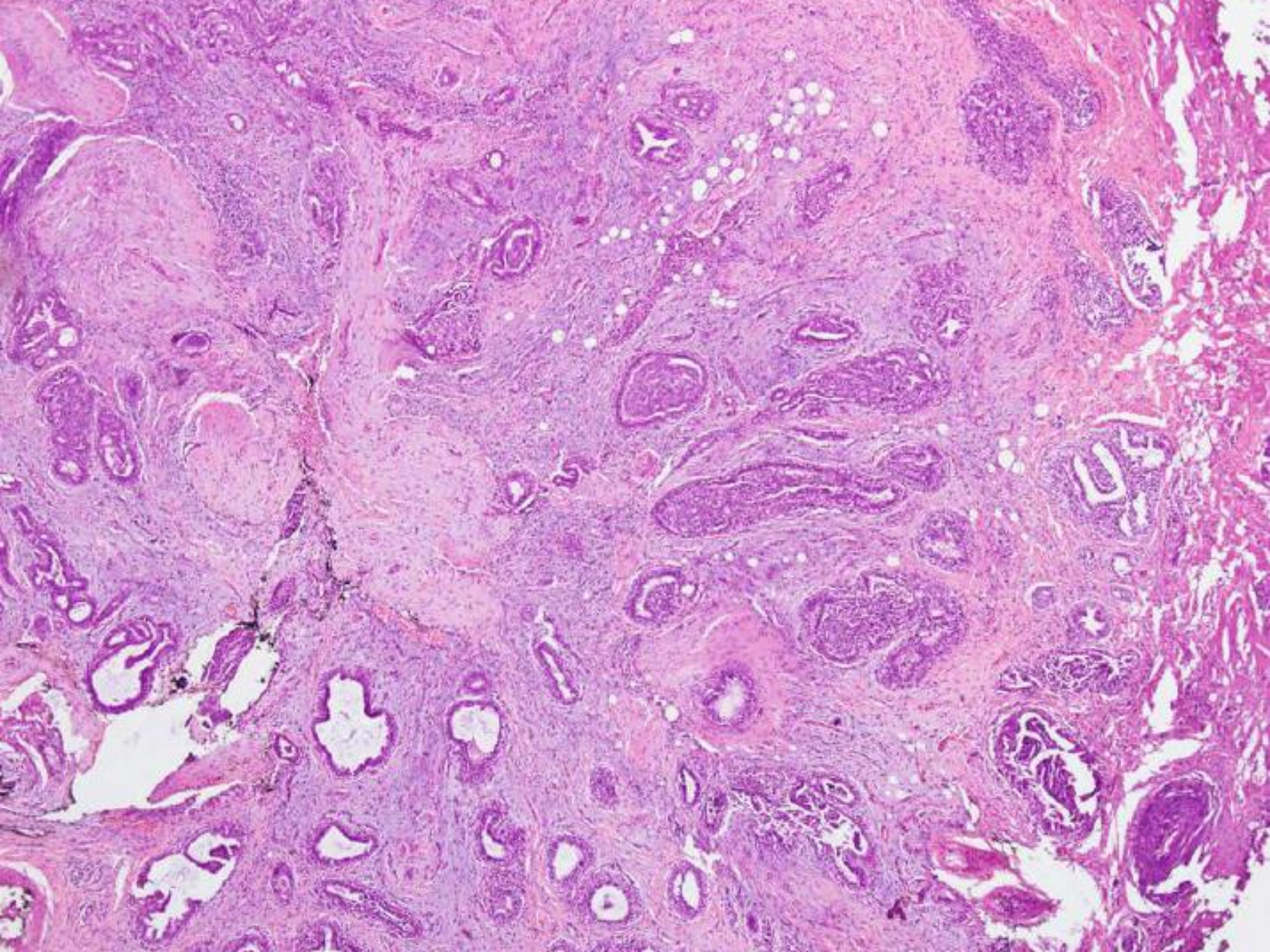


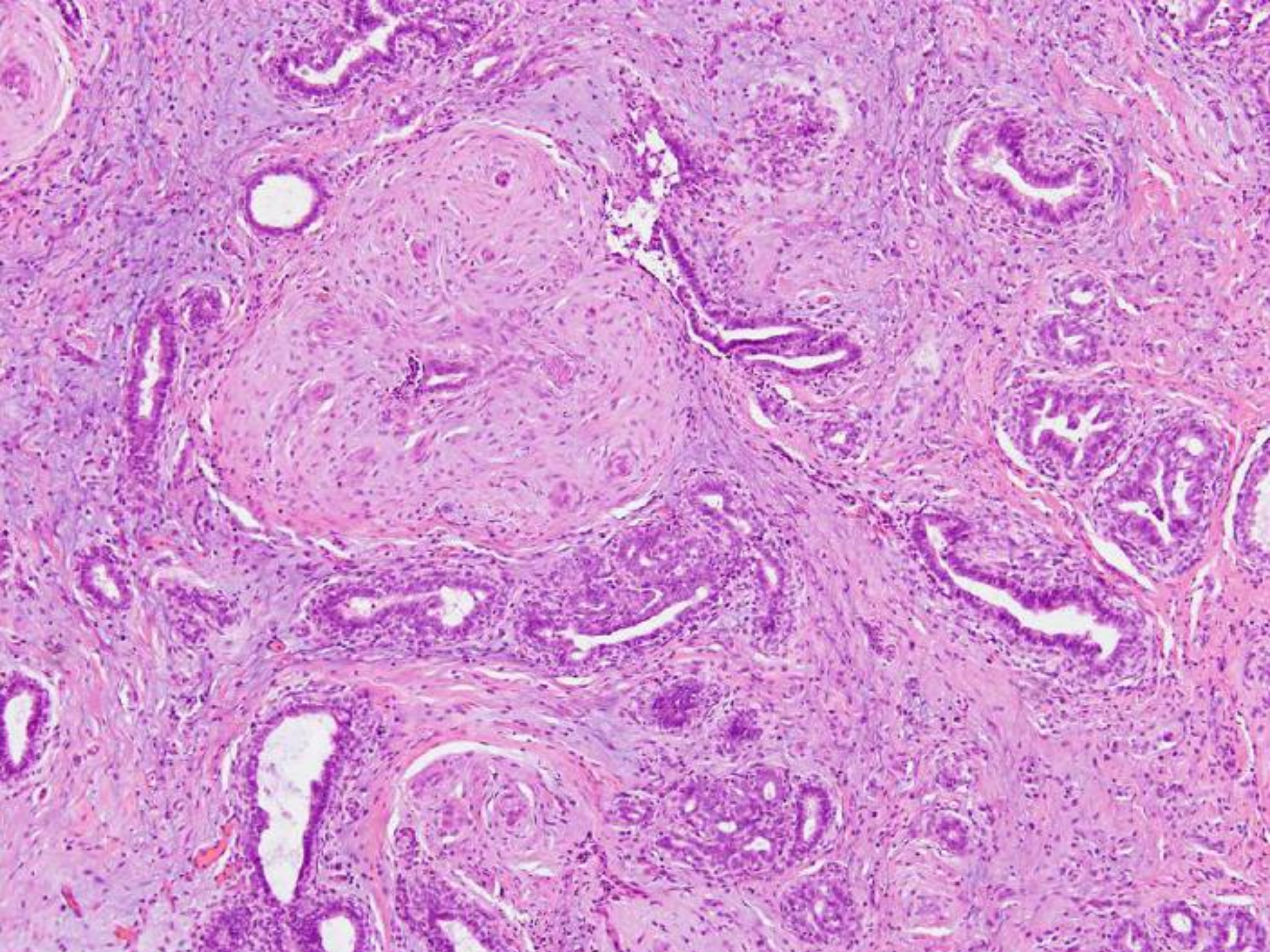
Case 1

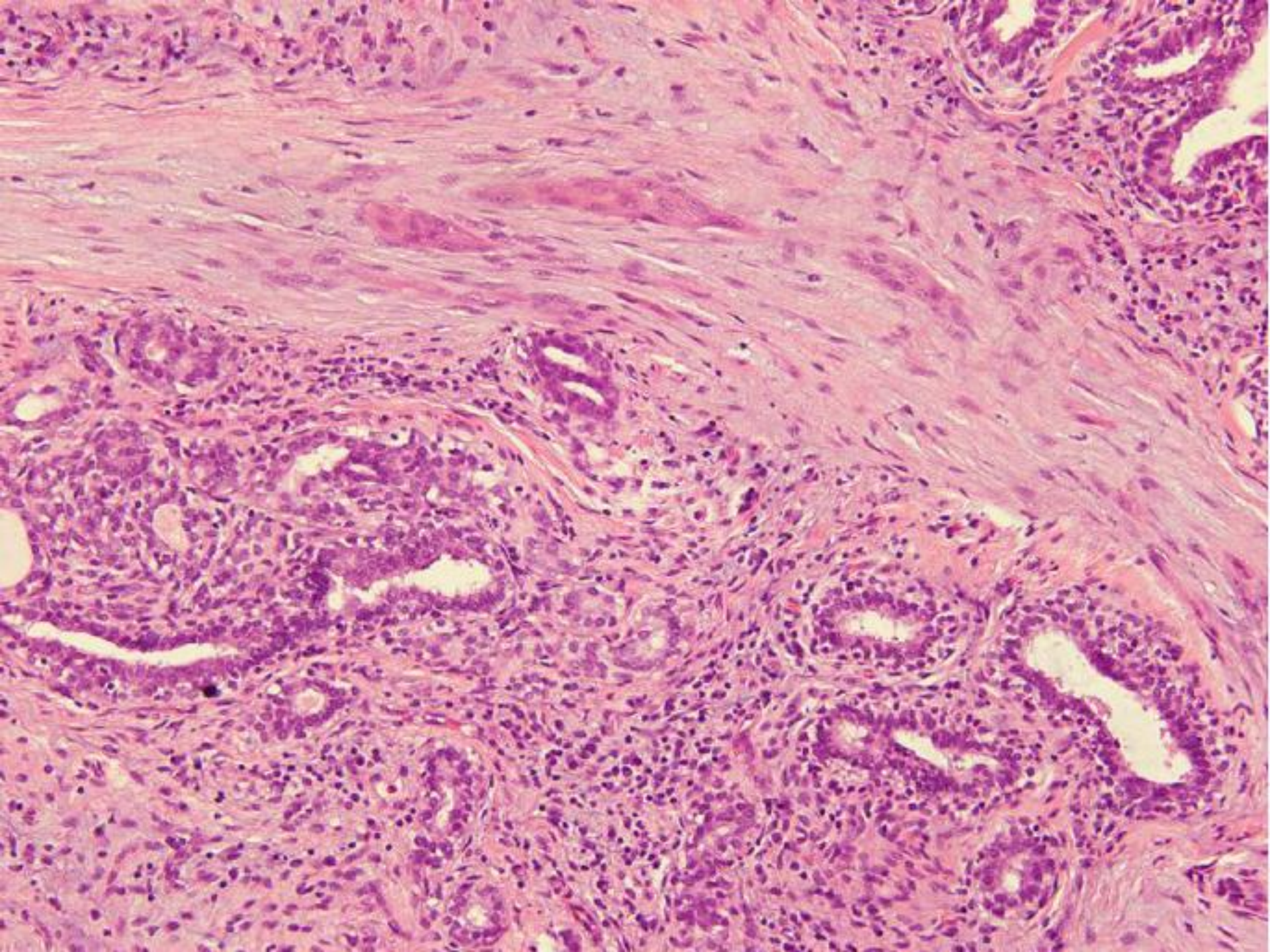
14 year old girl with a left breast lump.

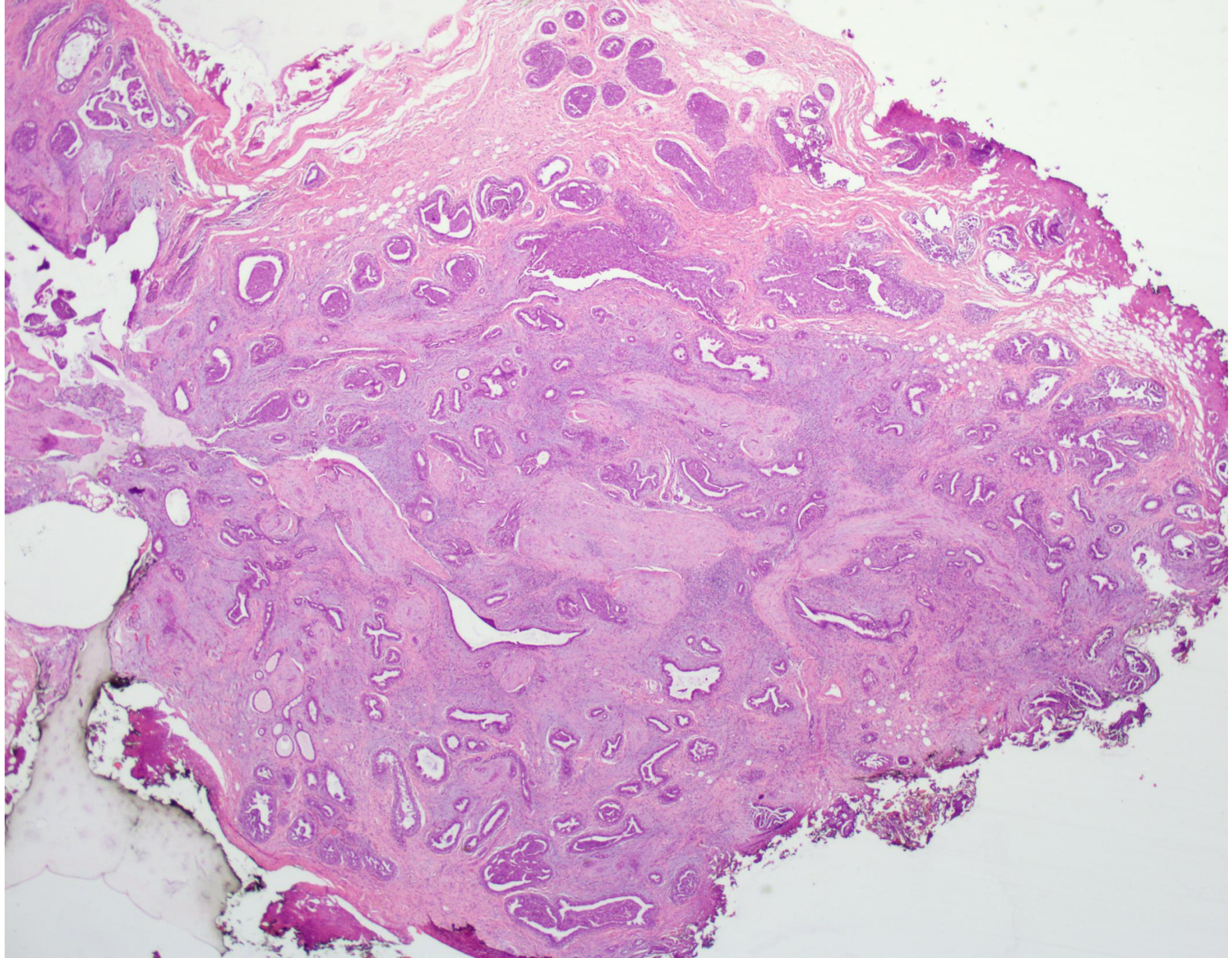
Excision biopsy performed.

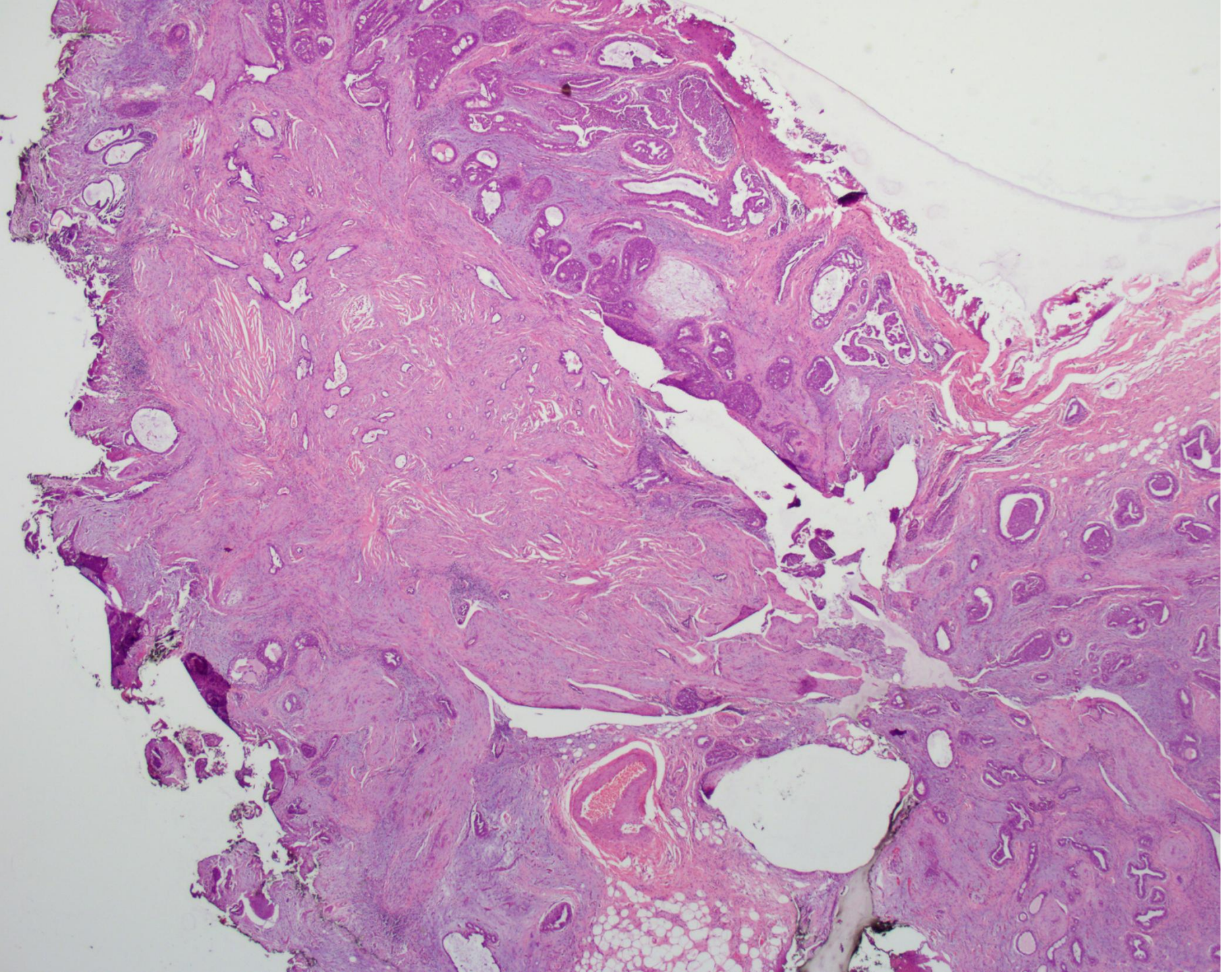


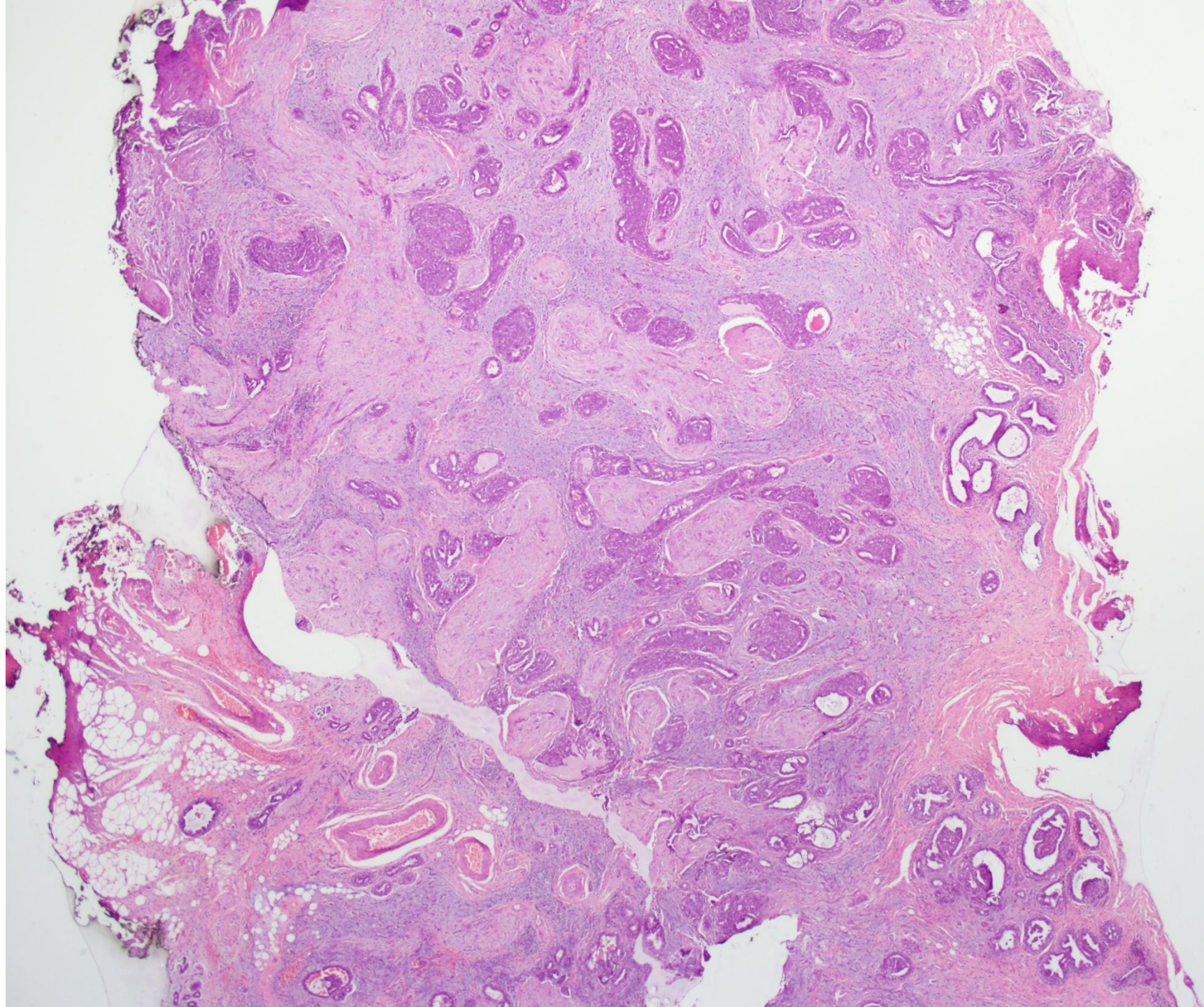


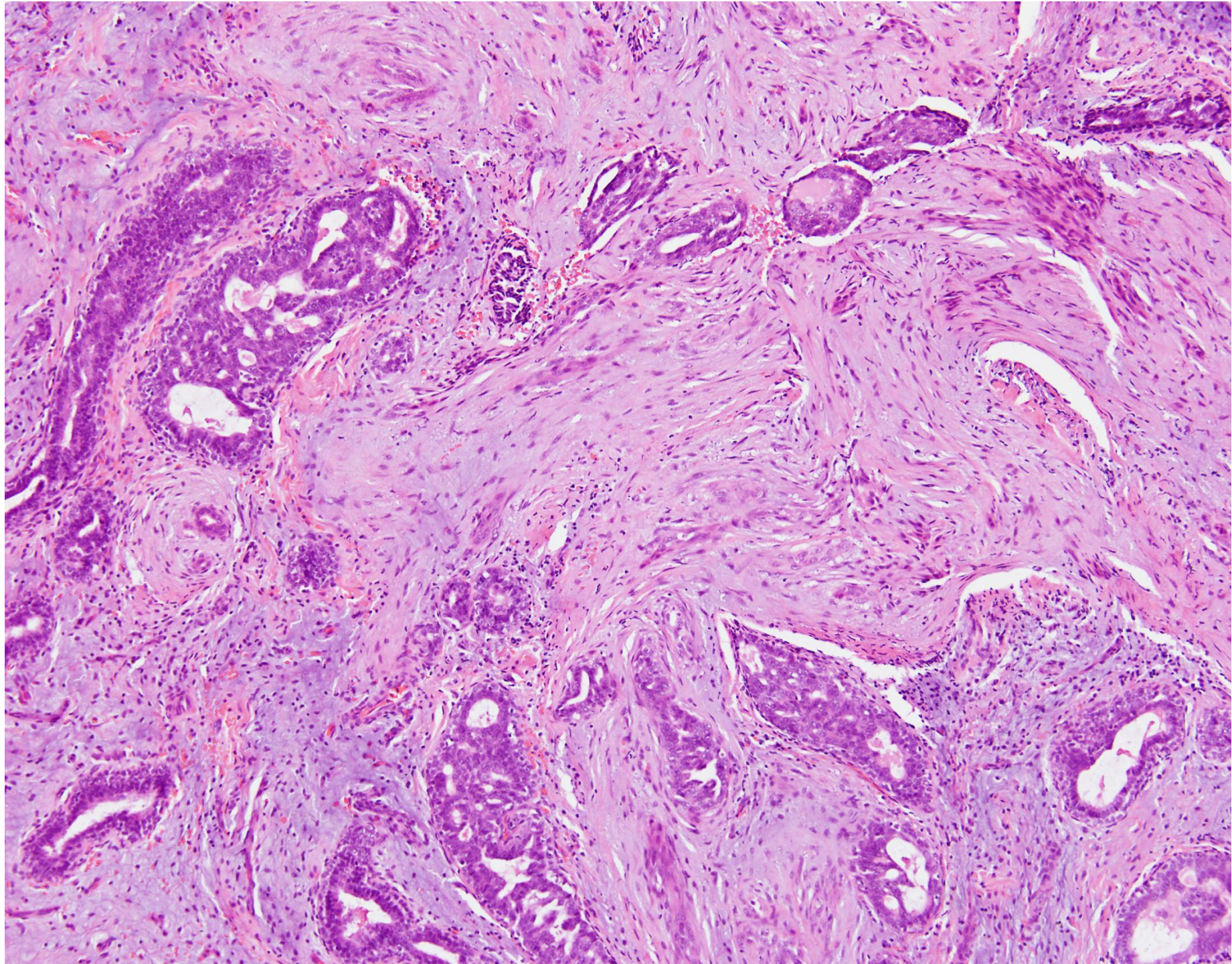


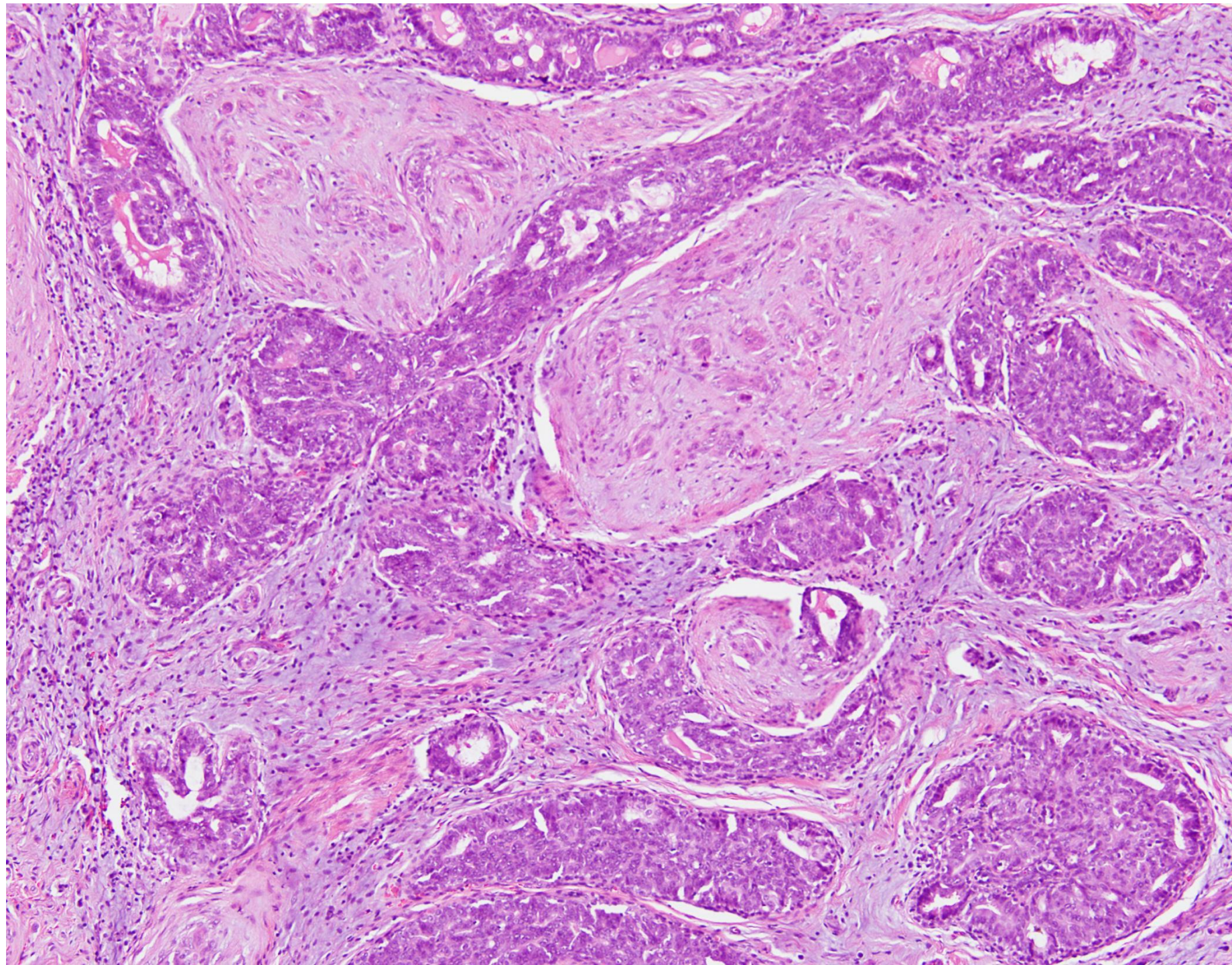


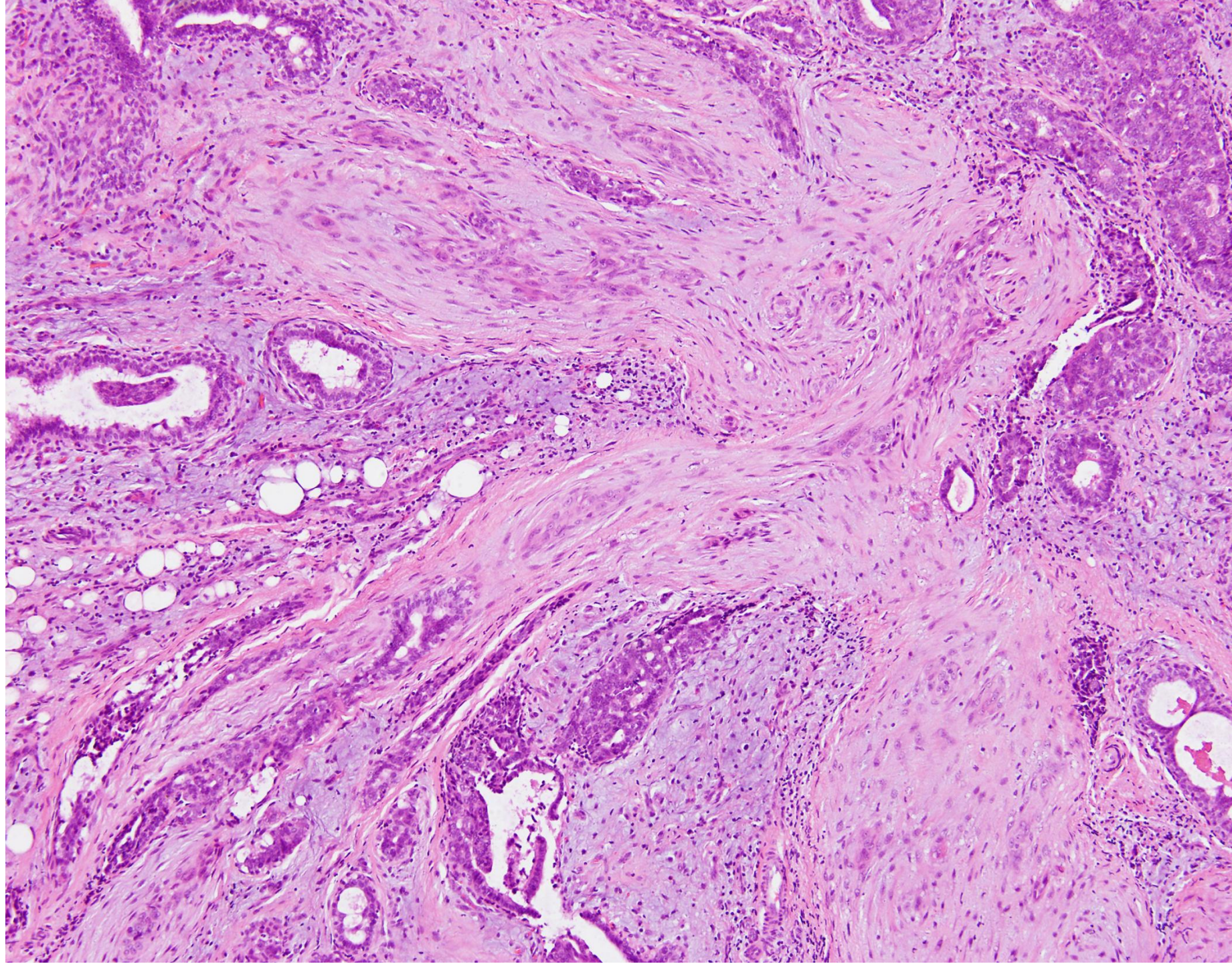


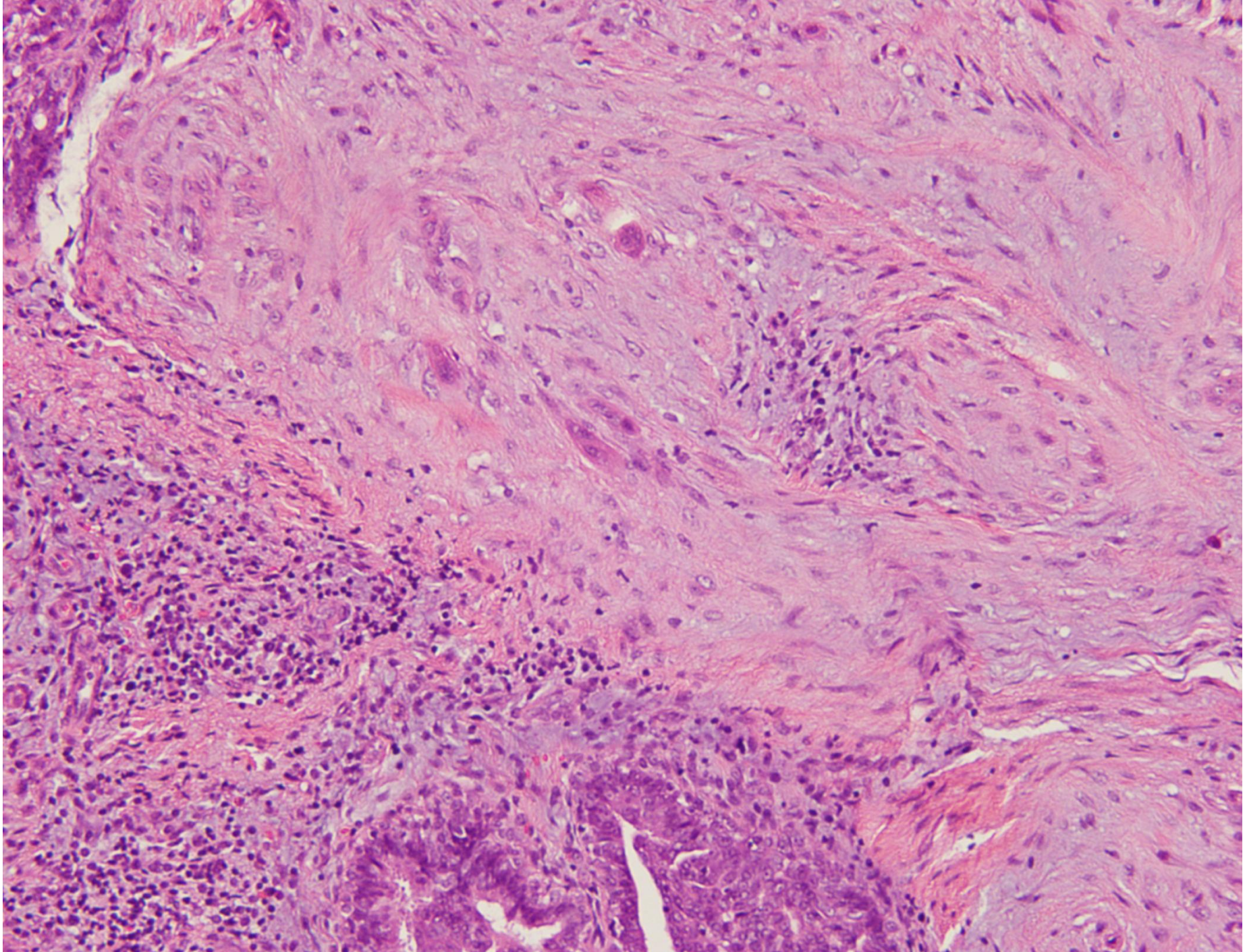


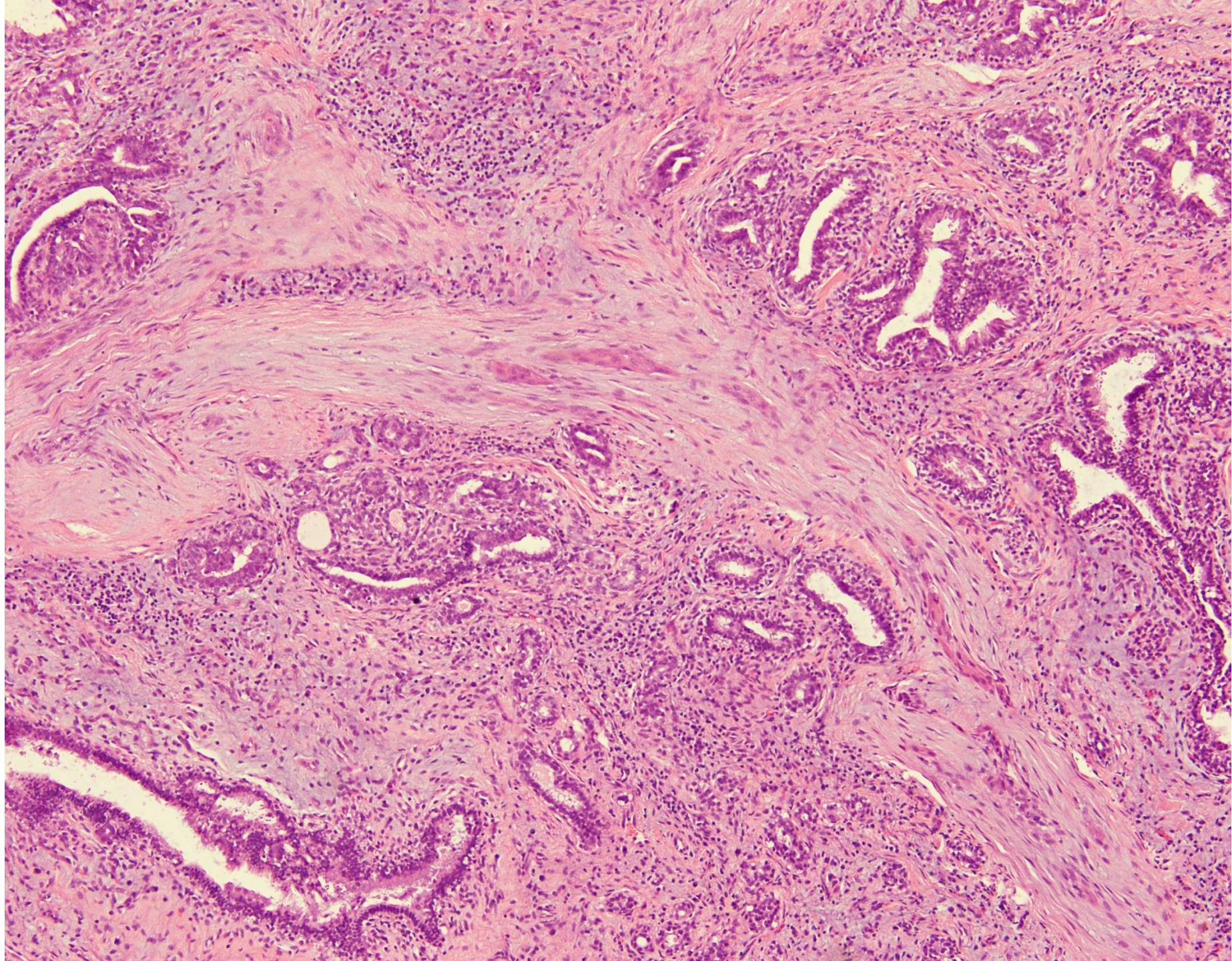


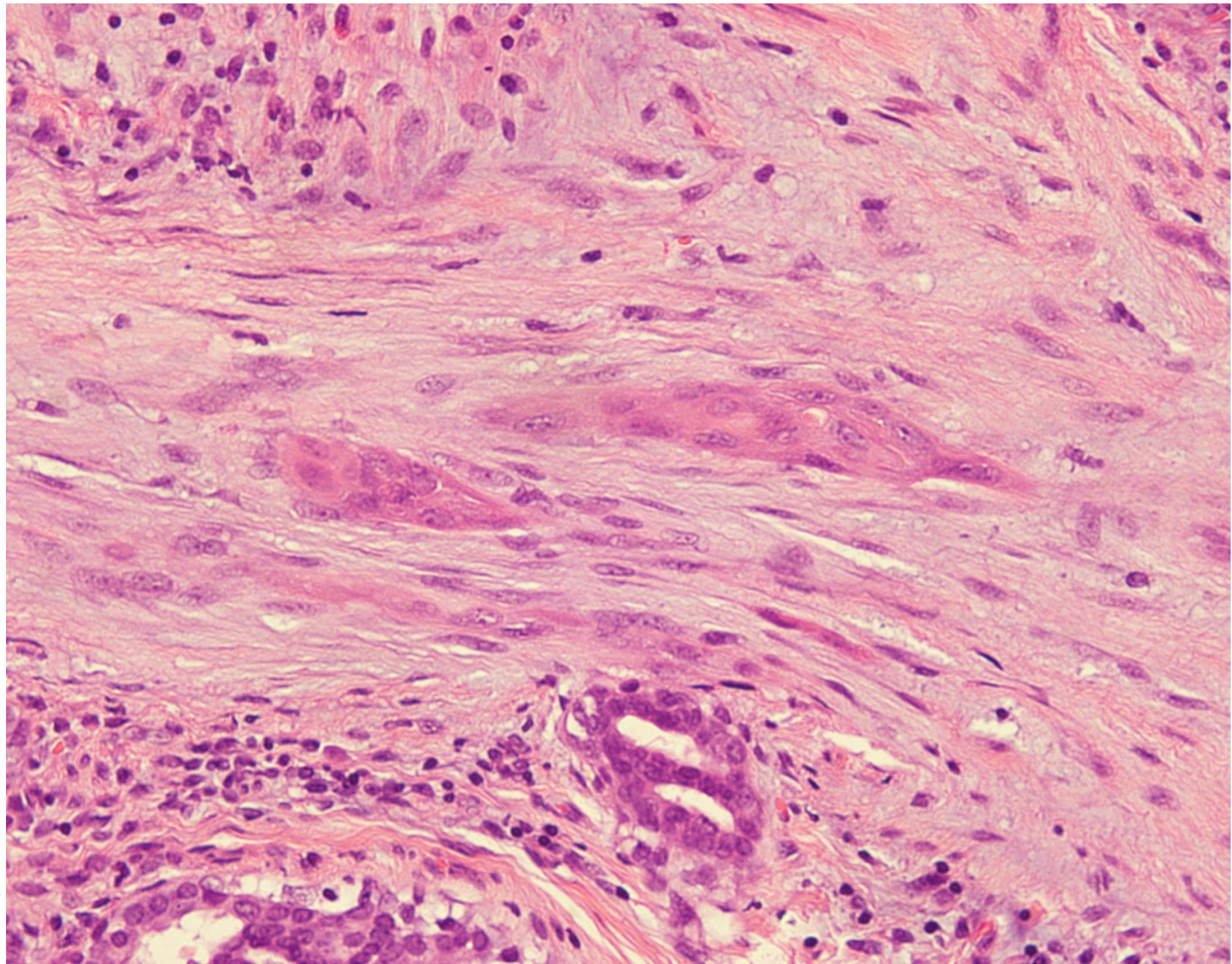


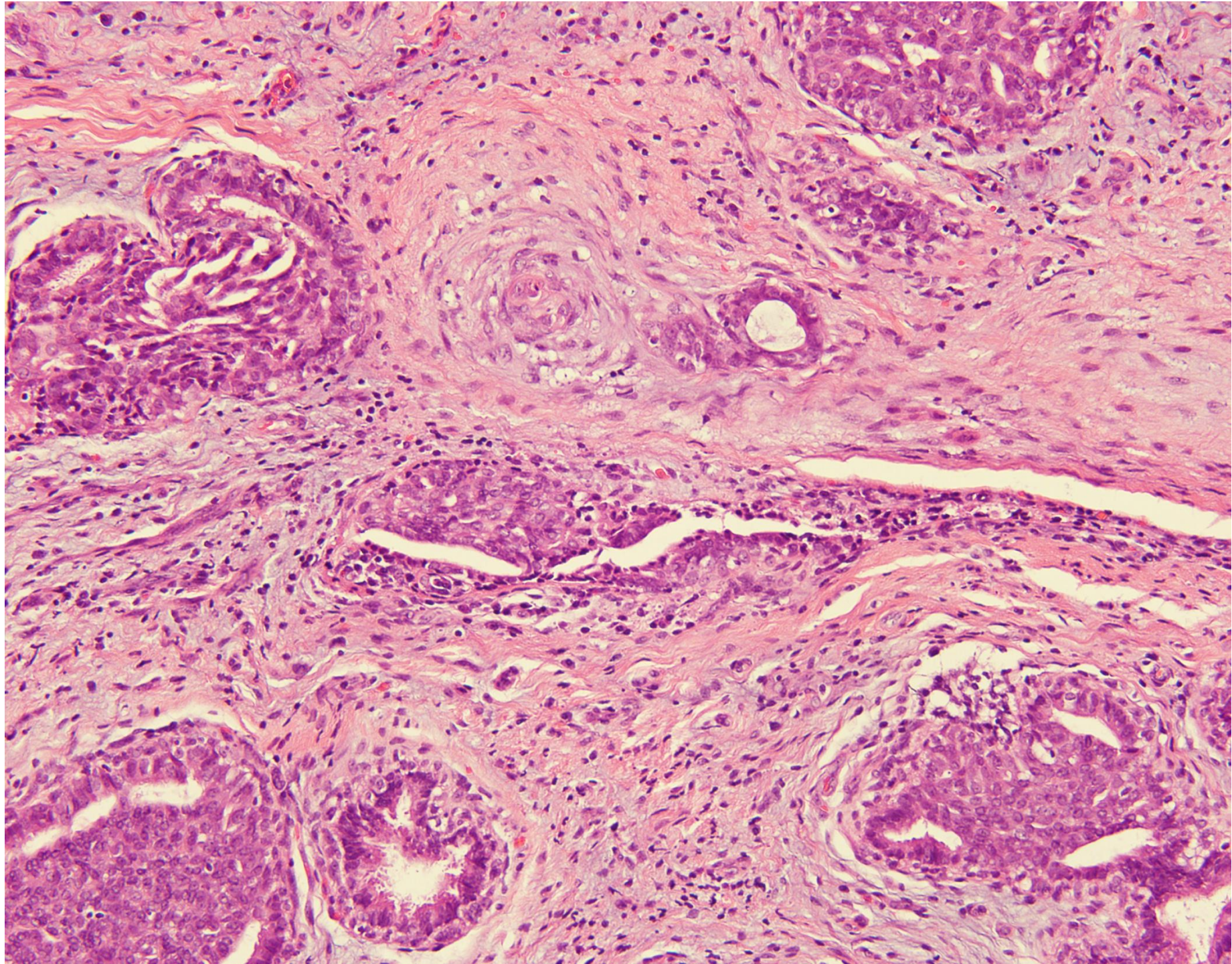




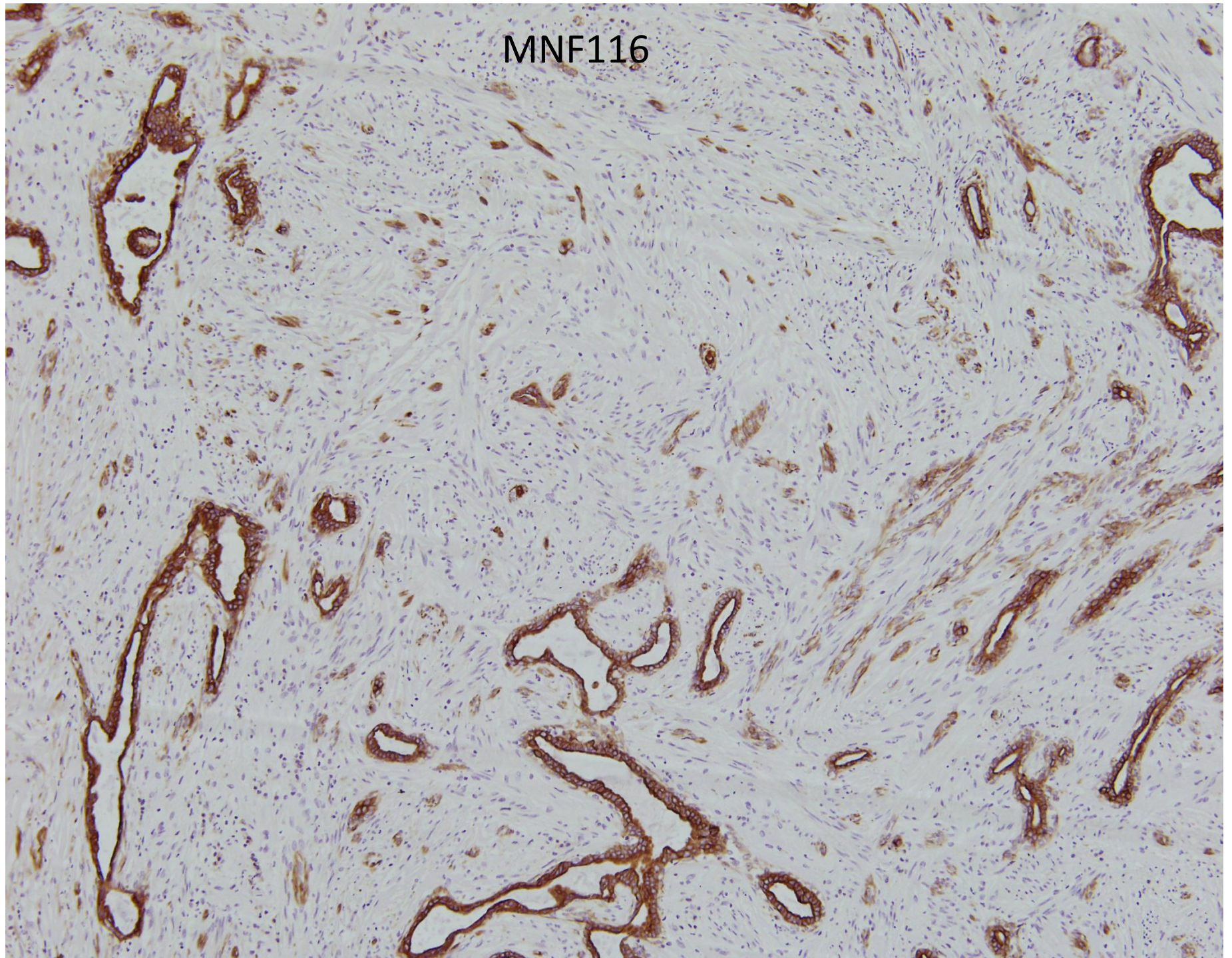




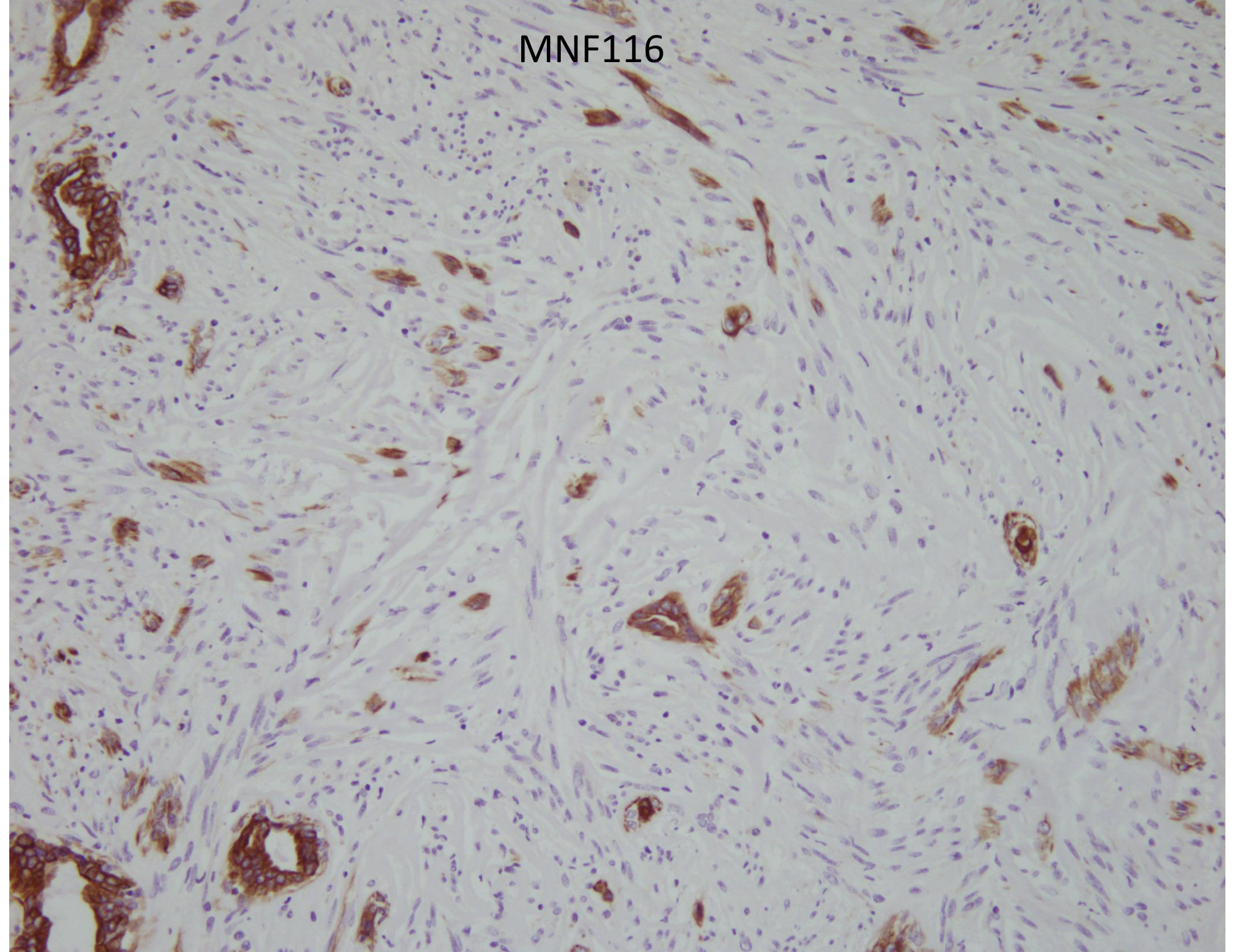




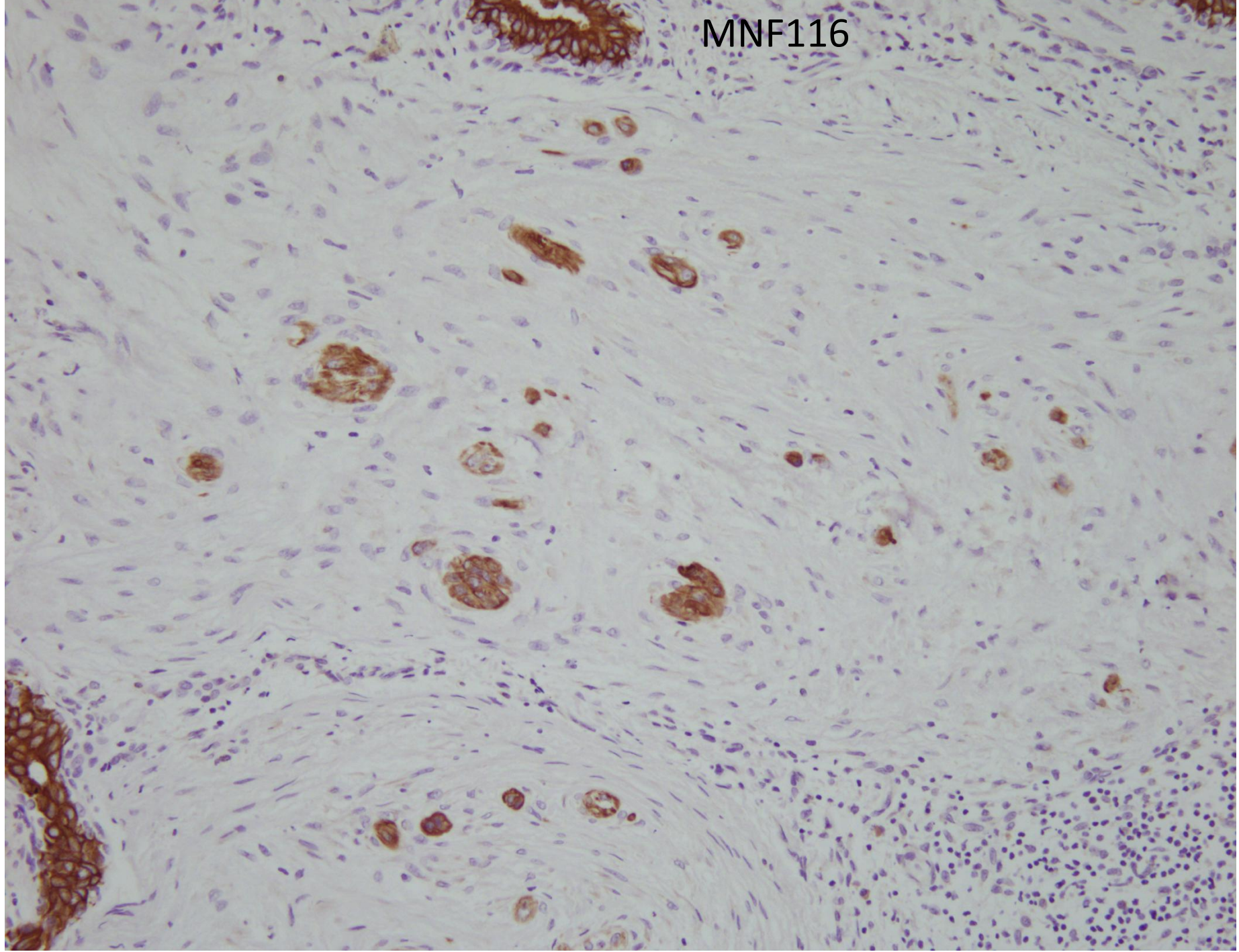
MNF116



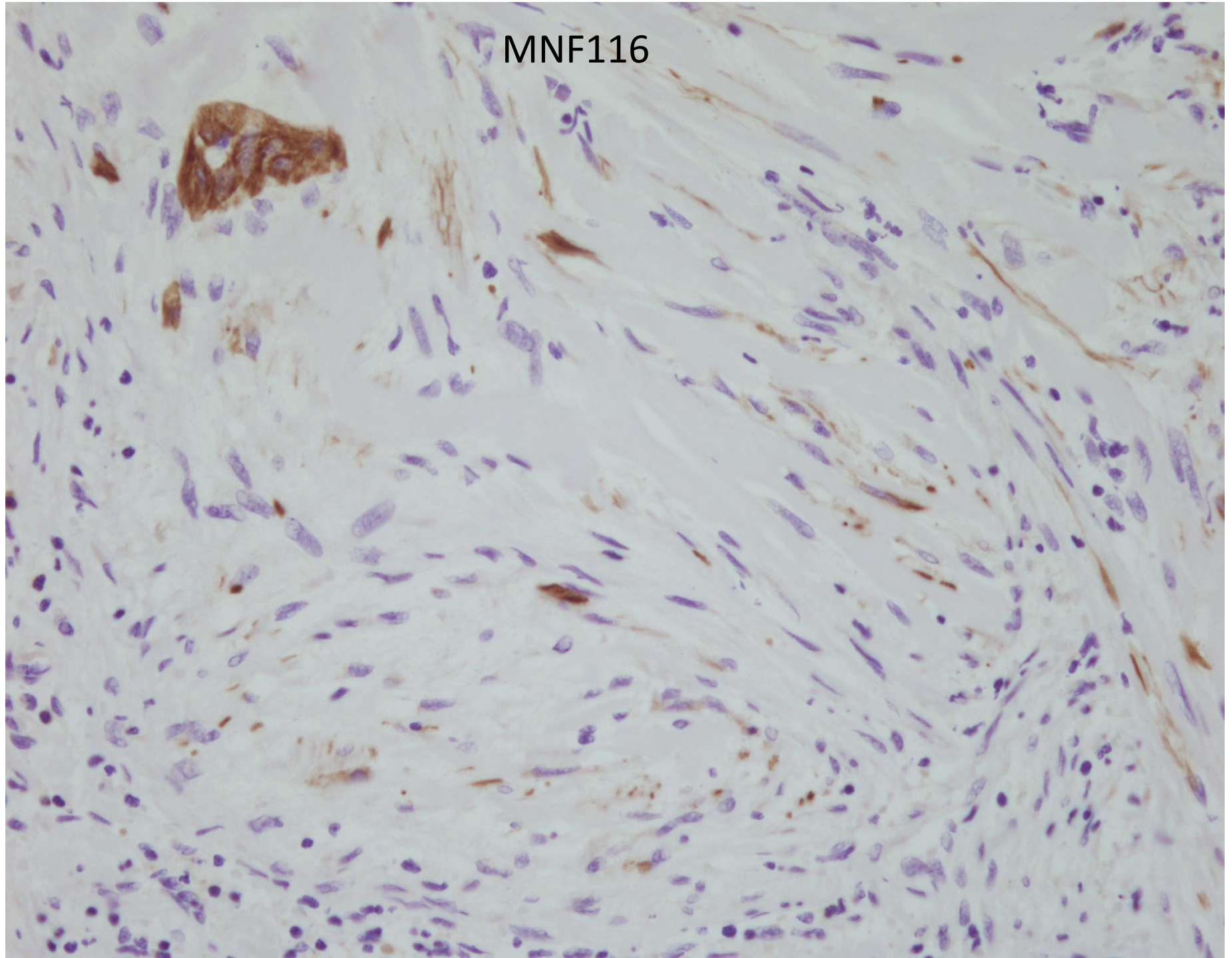
MNF116



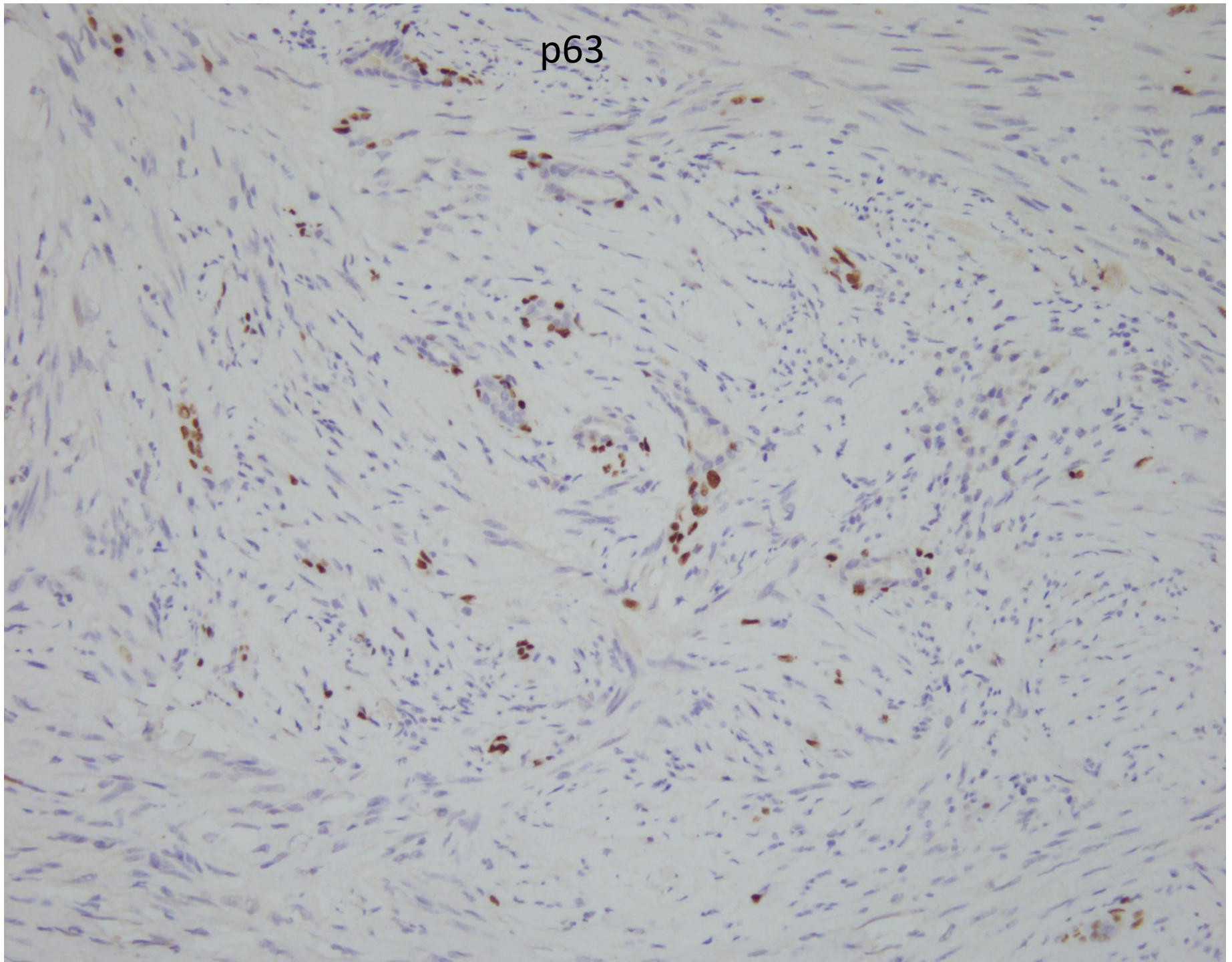
MNF116



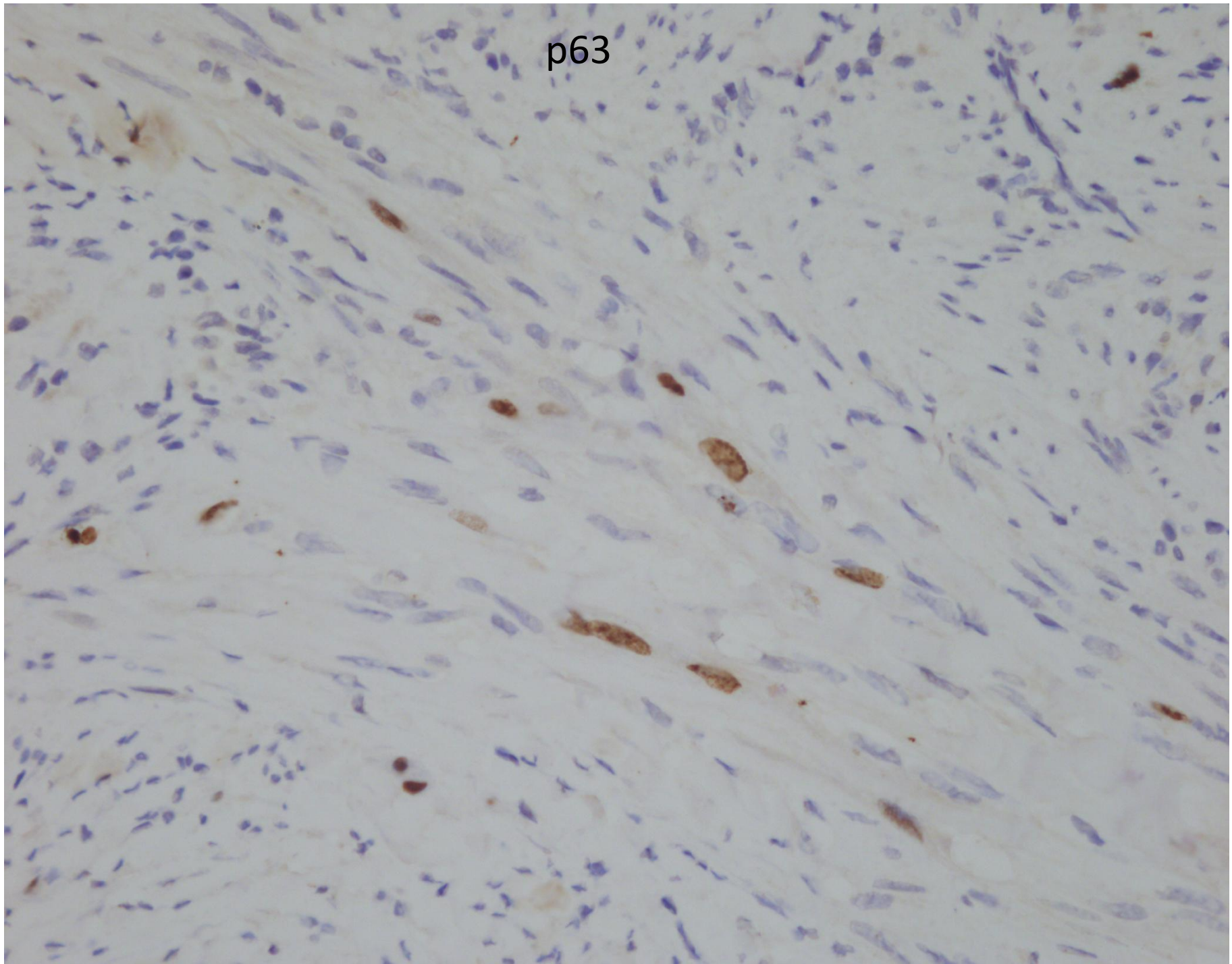
MNF116



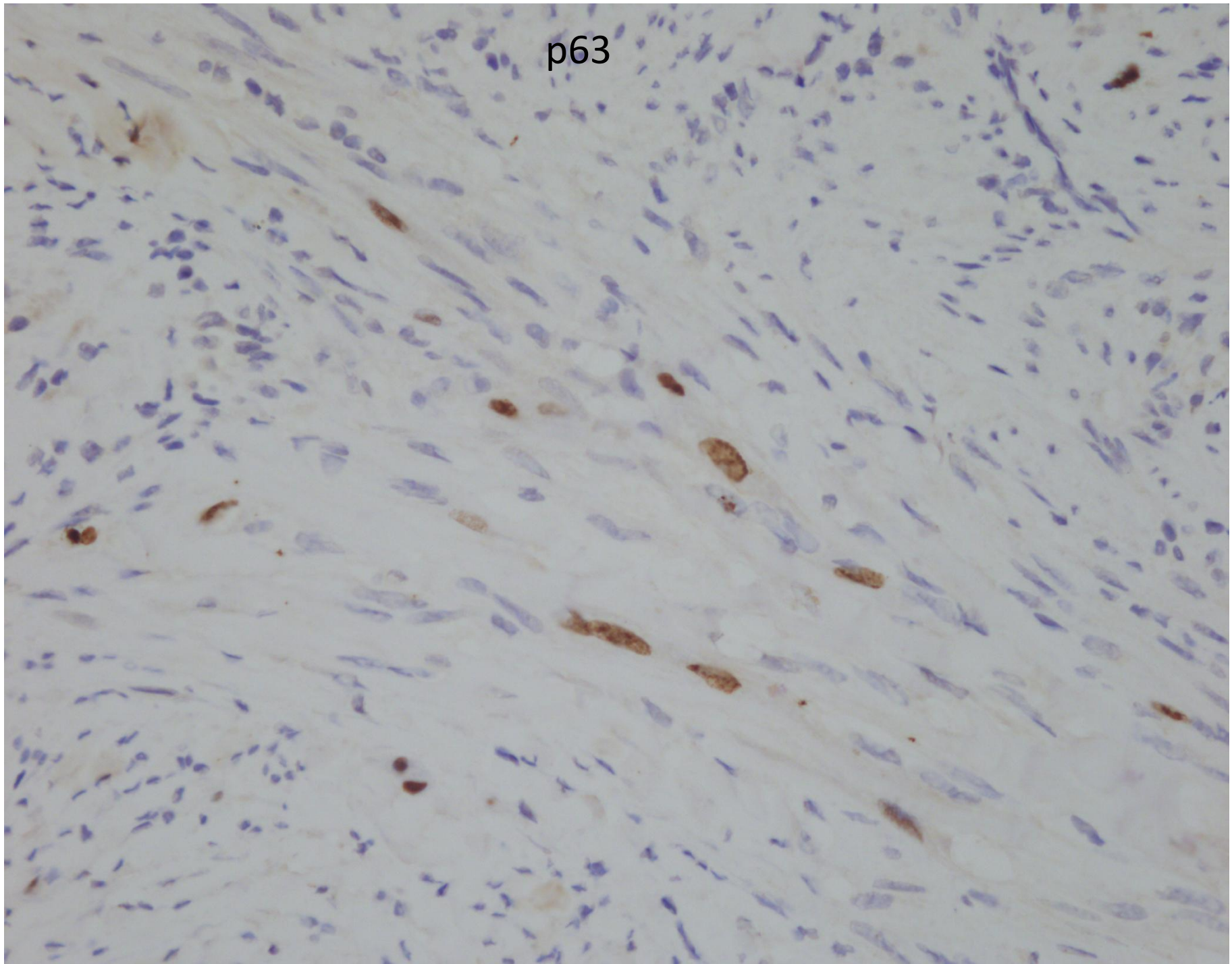
p63



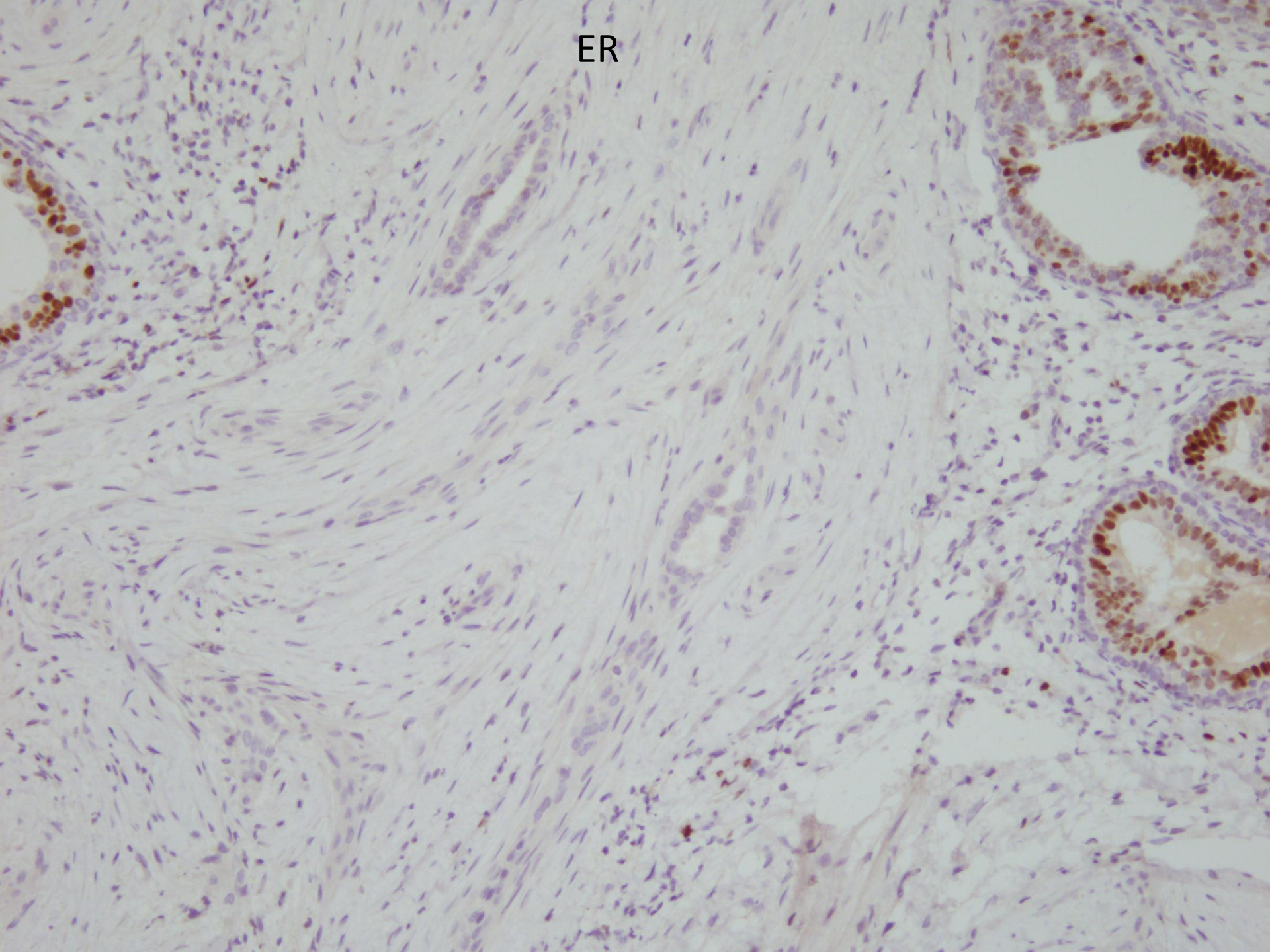
p63



p63



ER



Diagnosis

Low grade adenosquamous
carcinoma

Low grade adenosquamous carcinoma of the breast

- 1st described by Rosen & Ernsberger in 1987 (*AJSP 1987; 11:351-8*).
- 11 cases with both glandular & squamous differentiation.
- Average age 59 yrs; mean tumour size 2.3 cm.
- Recurrences in 4 of 8 cases treated by local excision alone (*average fu 3.5 yrs*).
- No nodal metastases nor recurrences in patients who underwent mastectomy.
- Favourable prognosis.

Low grade adenosquamous carcinoma of the breast

- 1991:
 - Suster et al reported 4 cases of “syringomatous squamous tumor” of the breast.
(Cancer 1991; 67: 2350-5)

Low grade adenosquamous carcinoma of the breast

- 1993:
 - Van Hoeven et al described 32 cases.
(AJSP 1993; 17: 248-58)
 - Mean size 2.8cm.
 - Origin from papillary tumour in 12 cases.
 - Nodal metastasis in 1 case; lung metastasis in another.
 - Local recurrence in 5 cases *(follow-up 12 to 124 mths)*.
 - Indolent but locally aggressive.
 - Complete limited excision of small lesions curative; tumours > 3cm may require more aggressive therapy.

Low grade adenosquamous carcinoma of the breast

- Denley et al
 - *Histopathology 2000; 36: 203-9.*
 - 5 cases: mean age 62 yrs; mean size 16mm.
 - Association with complex sclerosing lesion.

Low grade adenosquamous carcinoma of the breast

- Unusual variant of metaplastic duct cancer.
- Squamous metaplasia:
 - Extensive epidermoid growth.
 - Syringoma-like differentiation.
 - Inconspicuous squamous foci in predominantly glandular lesions.
- Spindle cells in lamellar arrangement merging with epithelium.

Low grade adenosquamous carcinoma of the breast

- Immunohistochemistry:
 - Variable staining in occasional glands and stromal cells for myoepithelial and cytokeratin markers.
 - Myoepithelial markers were circumferential, discontinuous to absent around glands.
 - Lamellar staining of stromal cells surrounding glands is noted for SMMHC or calponin, *Am J Surg Pathol.* 2012 Jul;36(7):1009-20.
 - Inconsistent results with commonly used immunohistochemical stains.
 - Triple negative.

Low grade adenosquamous carcinoma of the breast

- Unique points about this case:
 - Young age (there is a case report of a 19 year old female with low grade adenosquamous cancer, *World J Surg Oncol* 2010; 8:44).
 - Mimics a benign fibrosclerosing epithelial proliferative process.
 - Similar histological alterations in core biopsy reaction sites.
 - Unusual immunohistochemical staining characteristics.
 - Conceptual debate on florid reactive versus neoplastic nature.