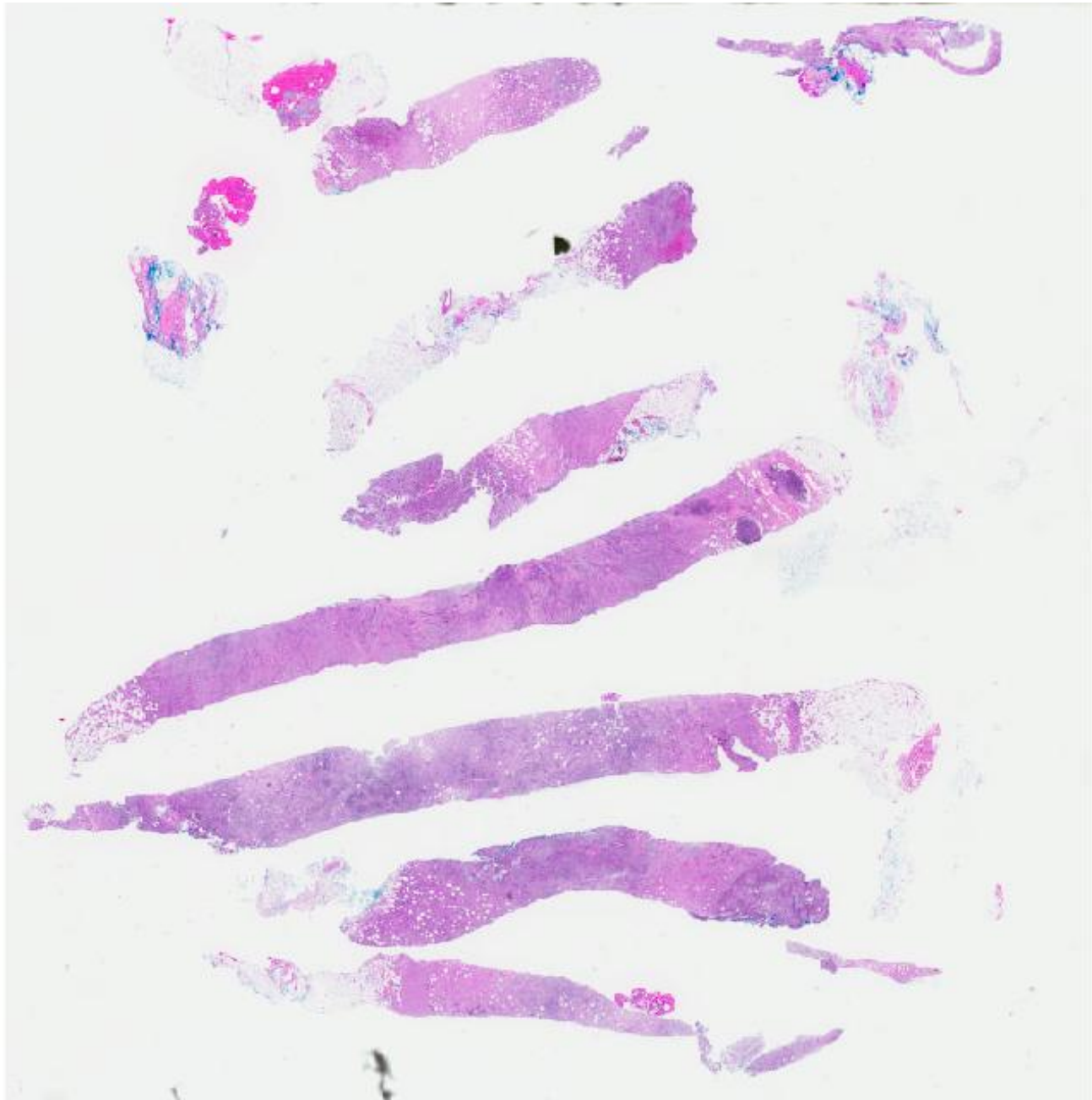
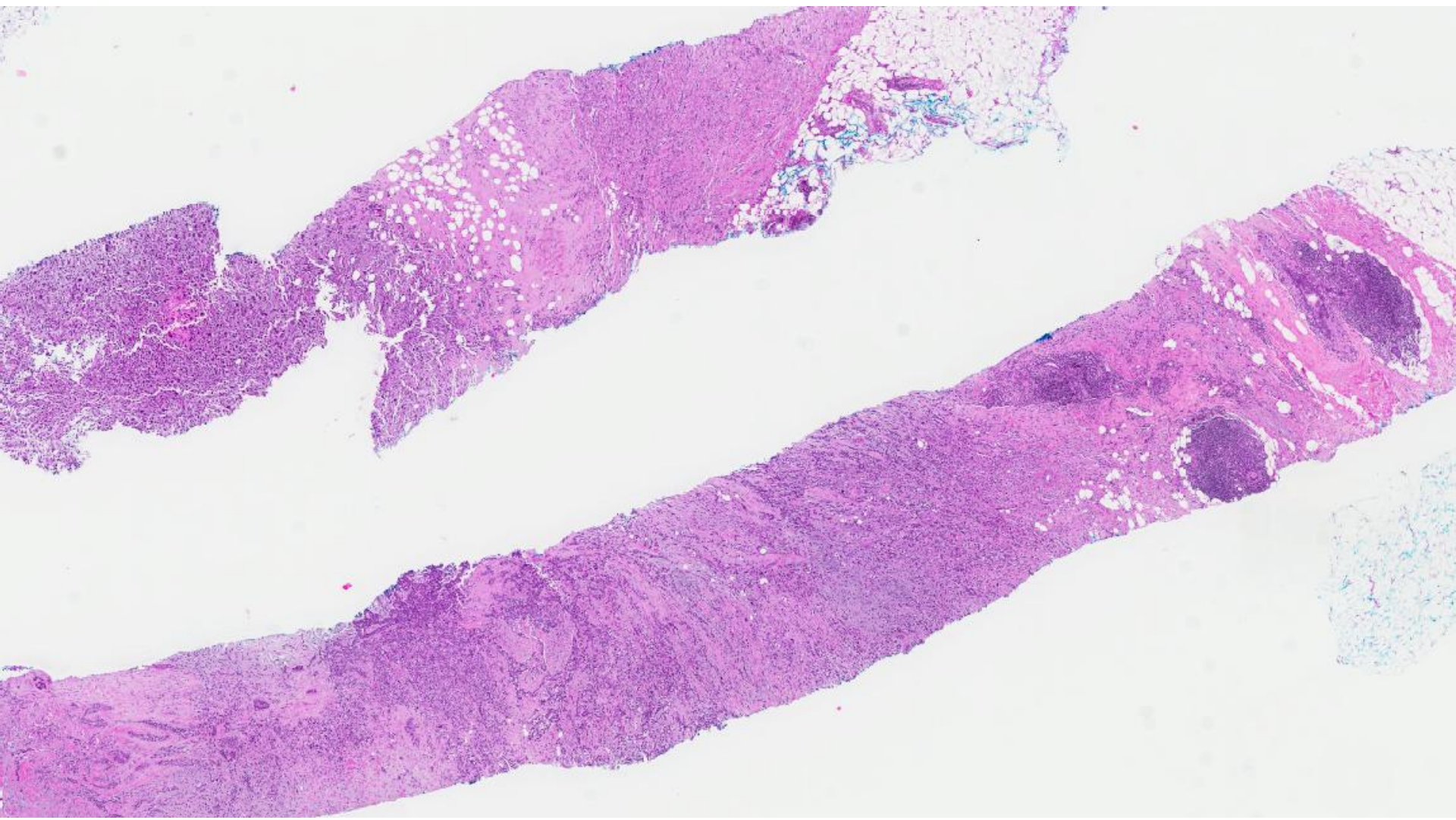


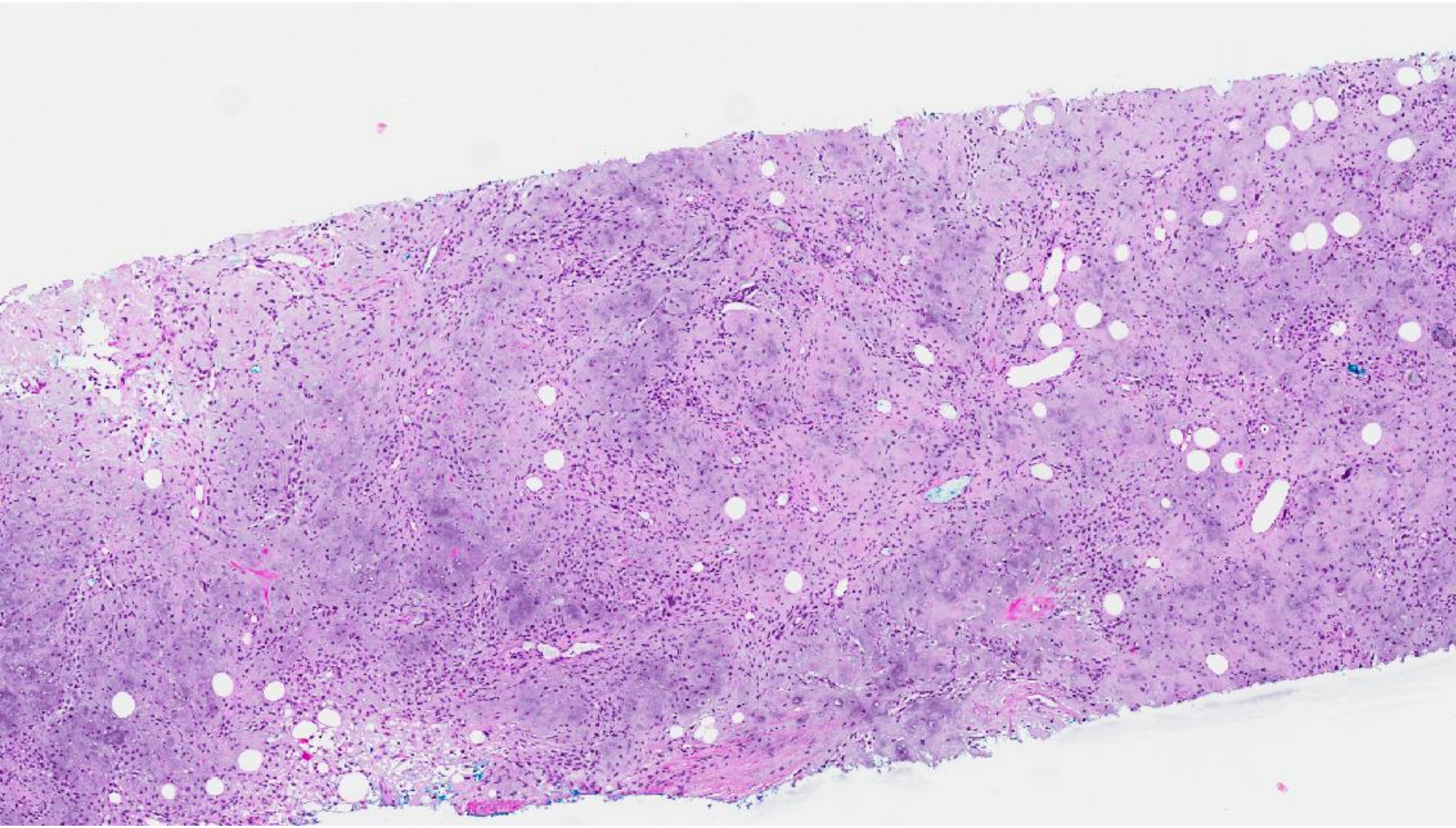
Case 35

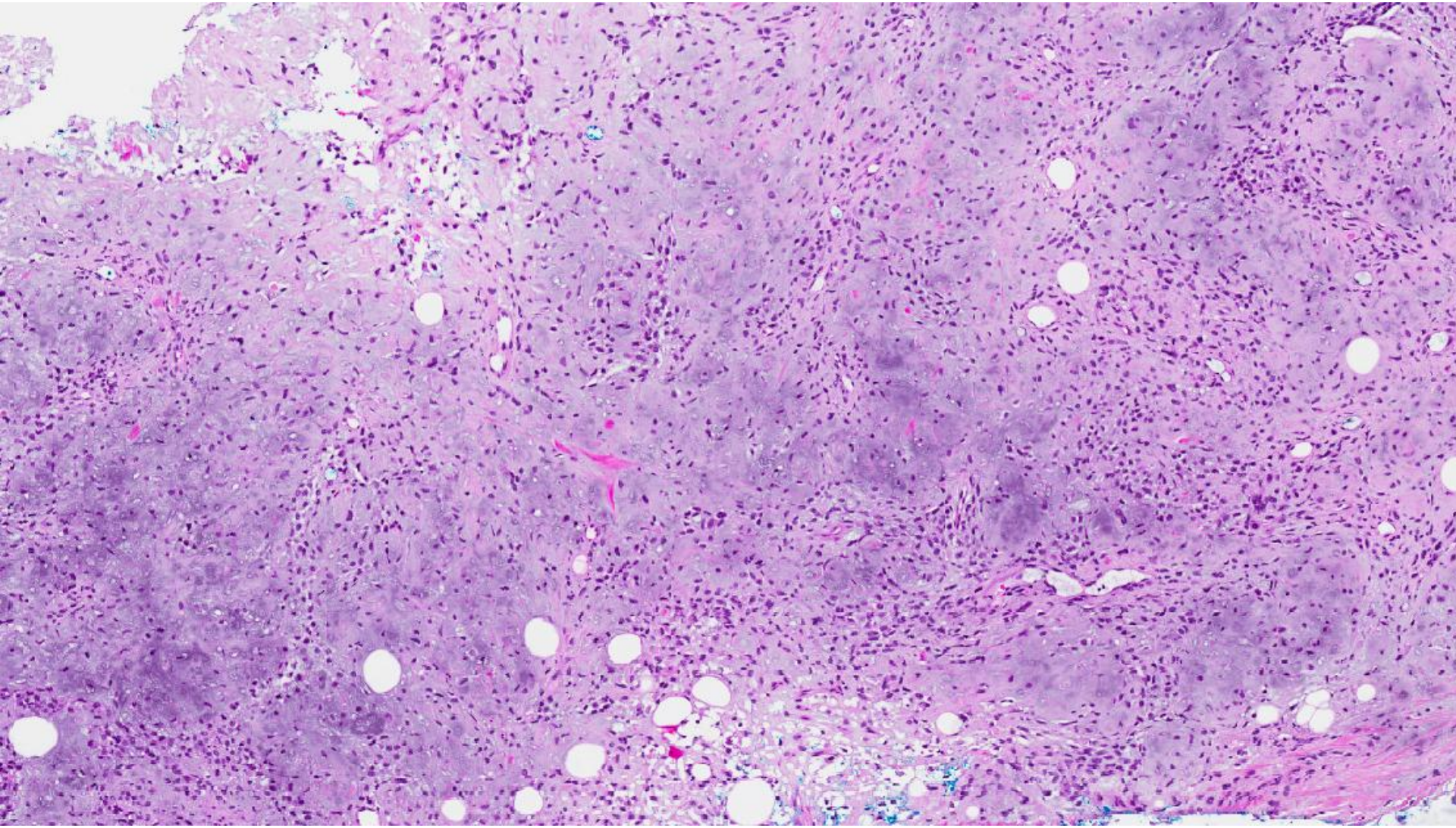
68 year old Chinese lady presented
with a left breast mass.

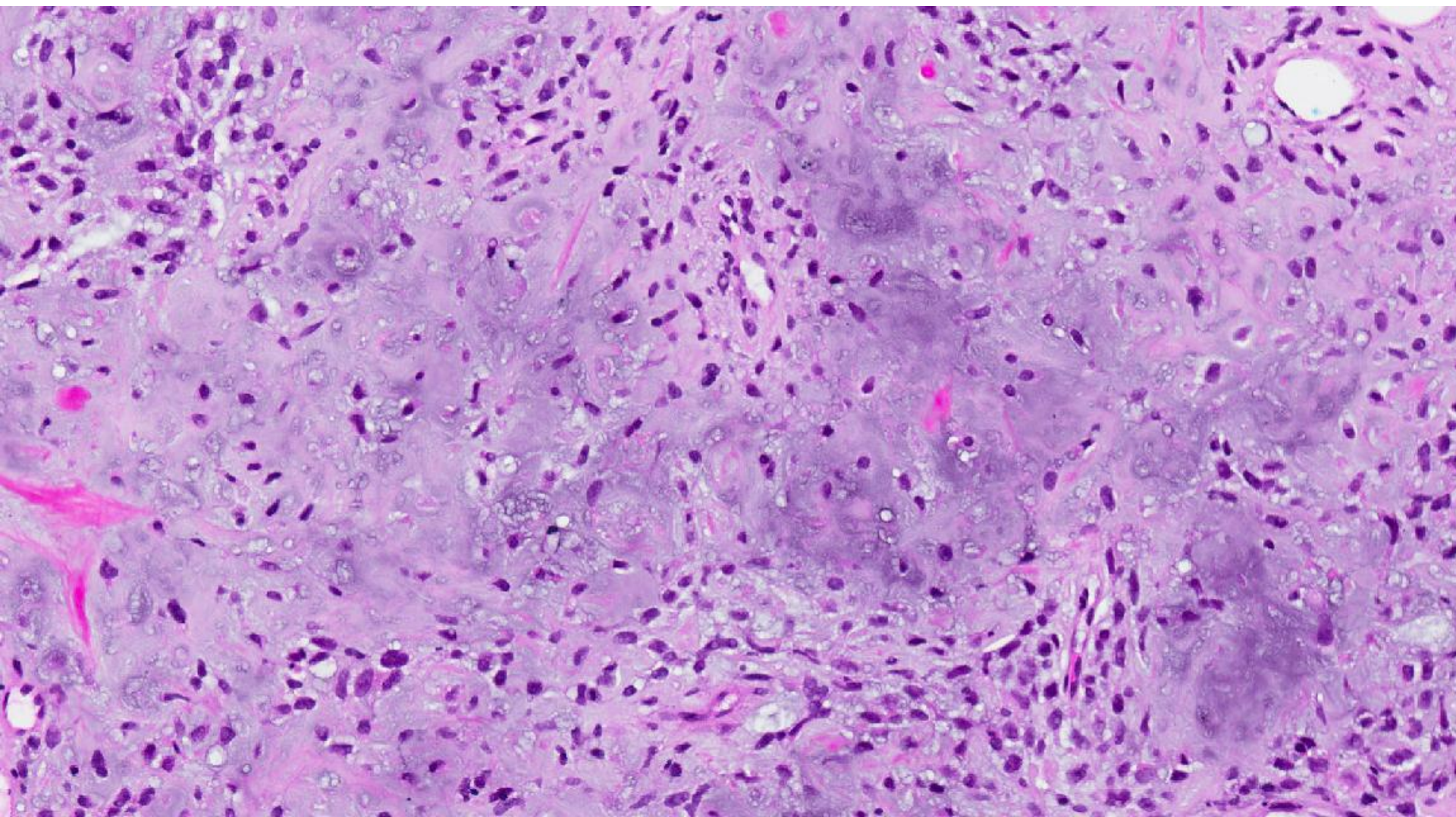
A trucut biopsy was performed.

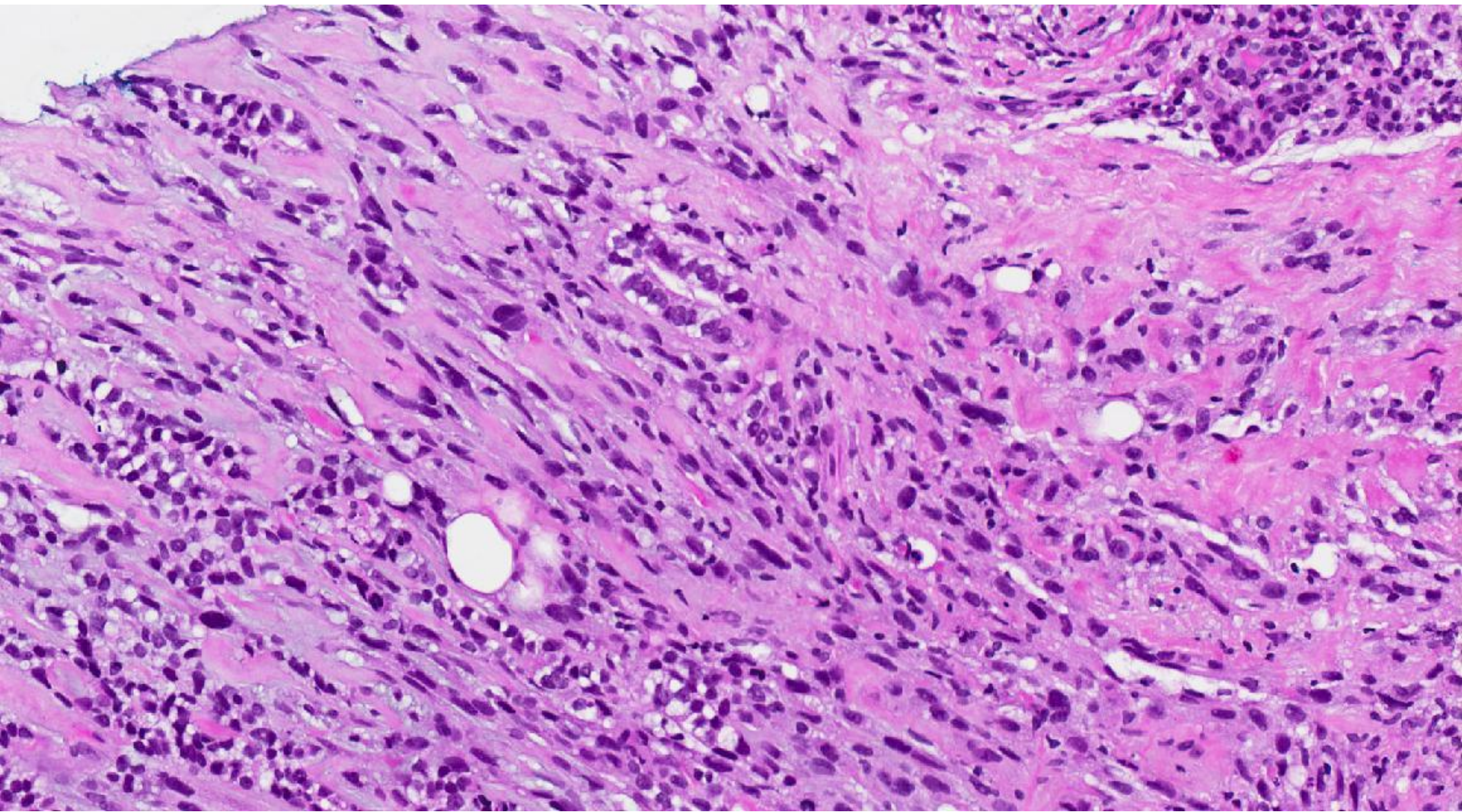


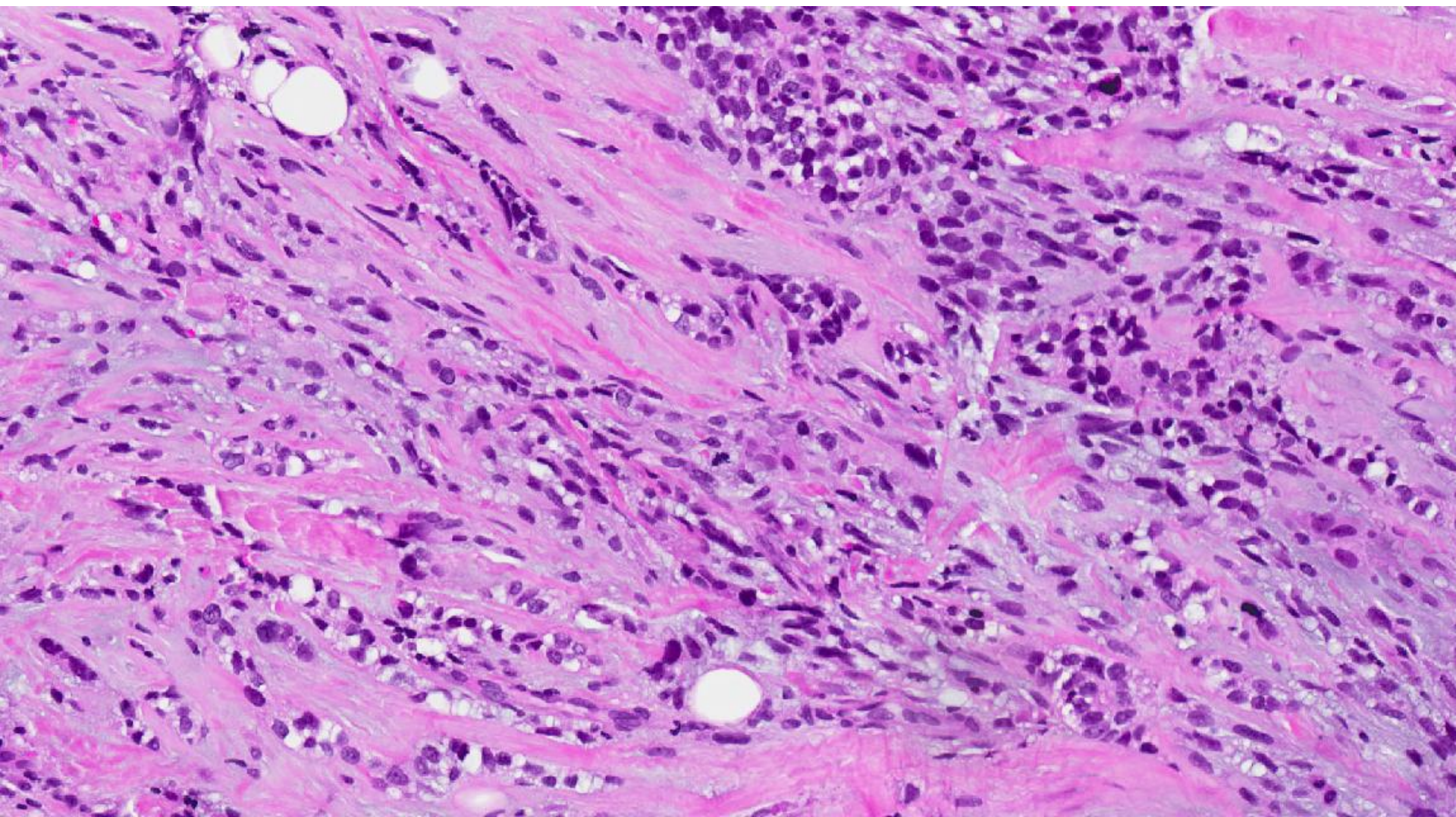


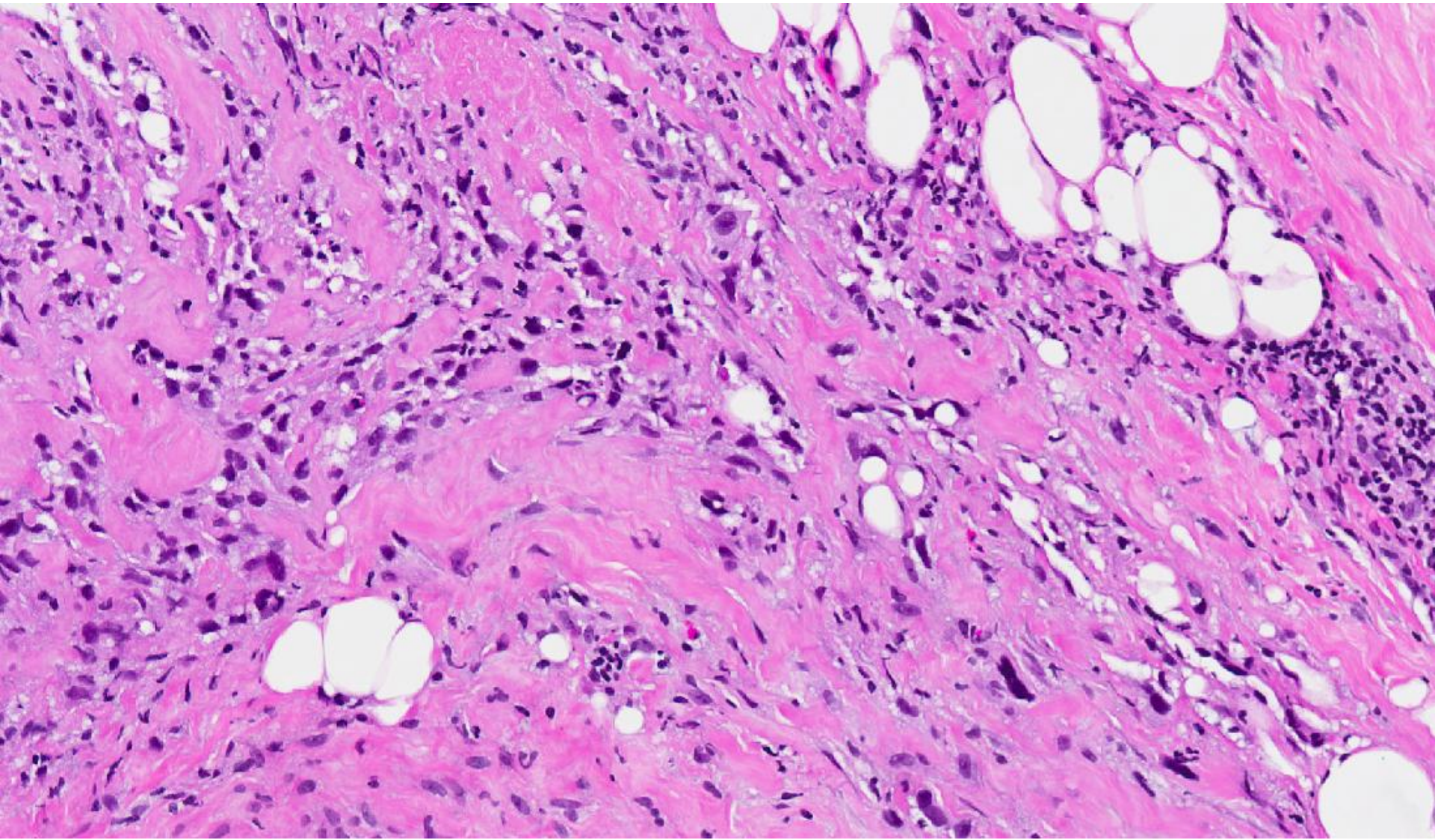


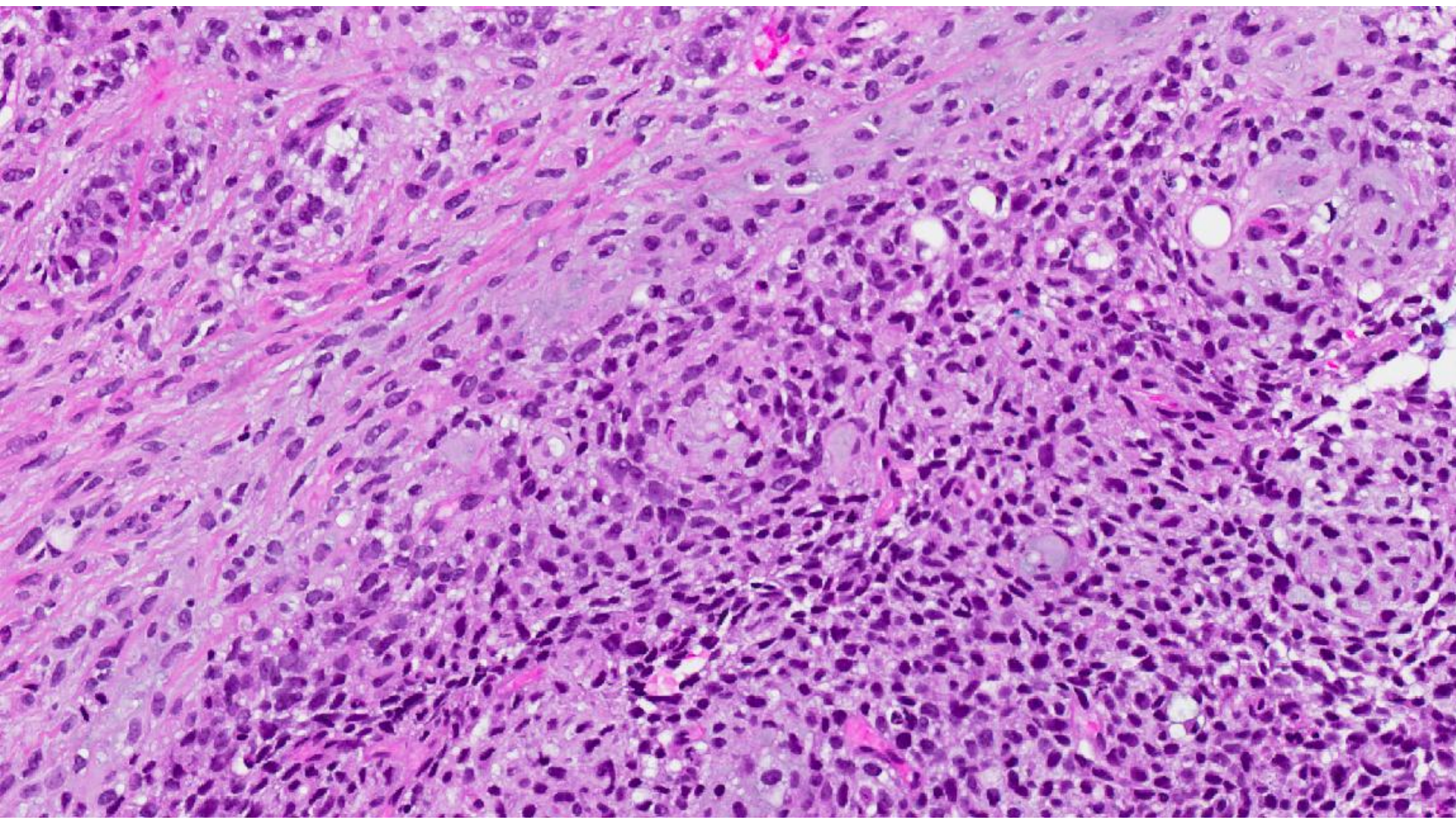


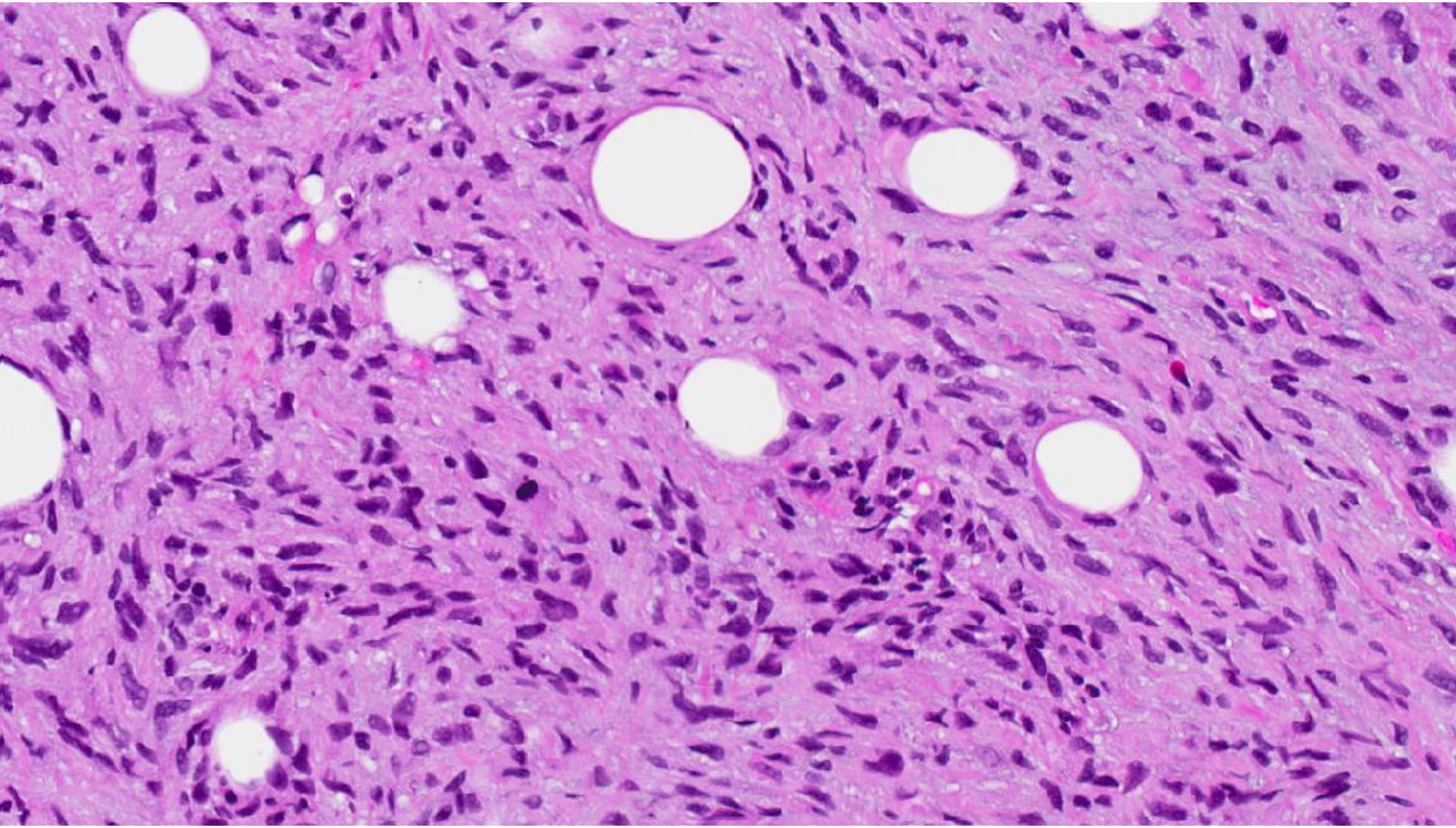


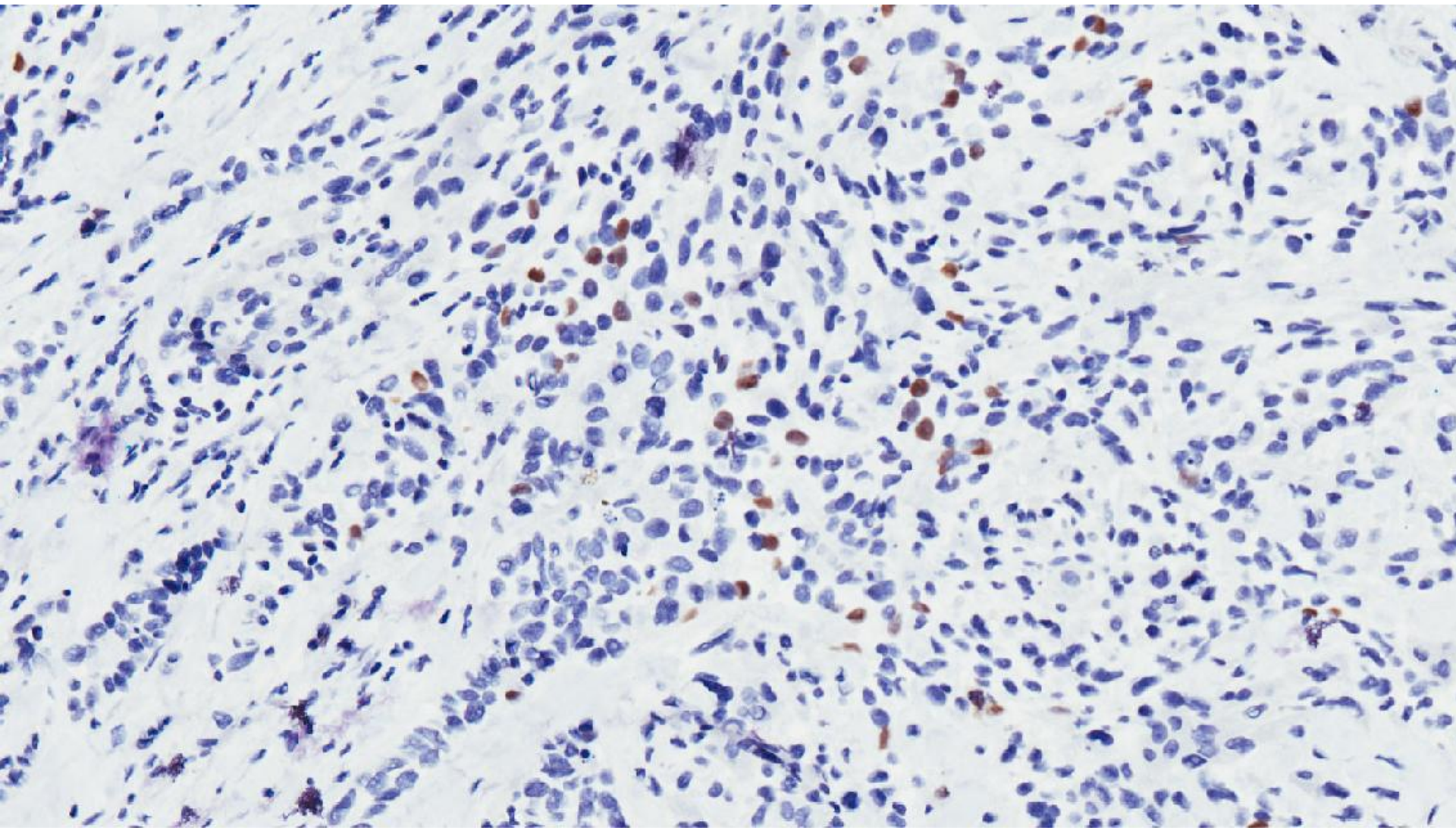




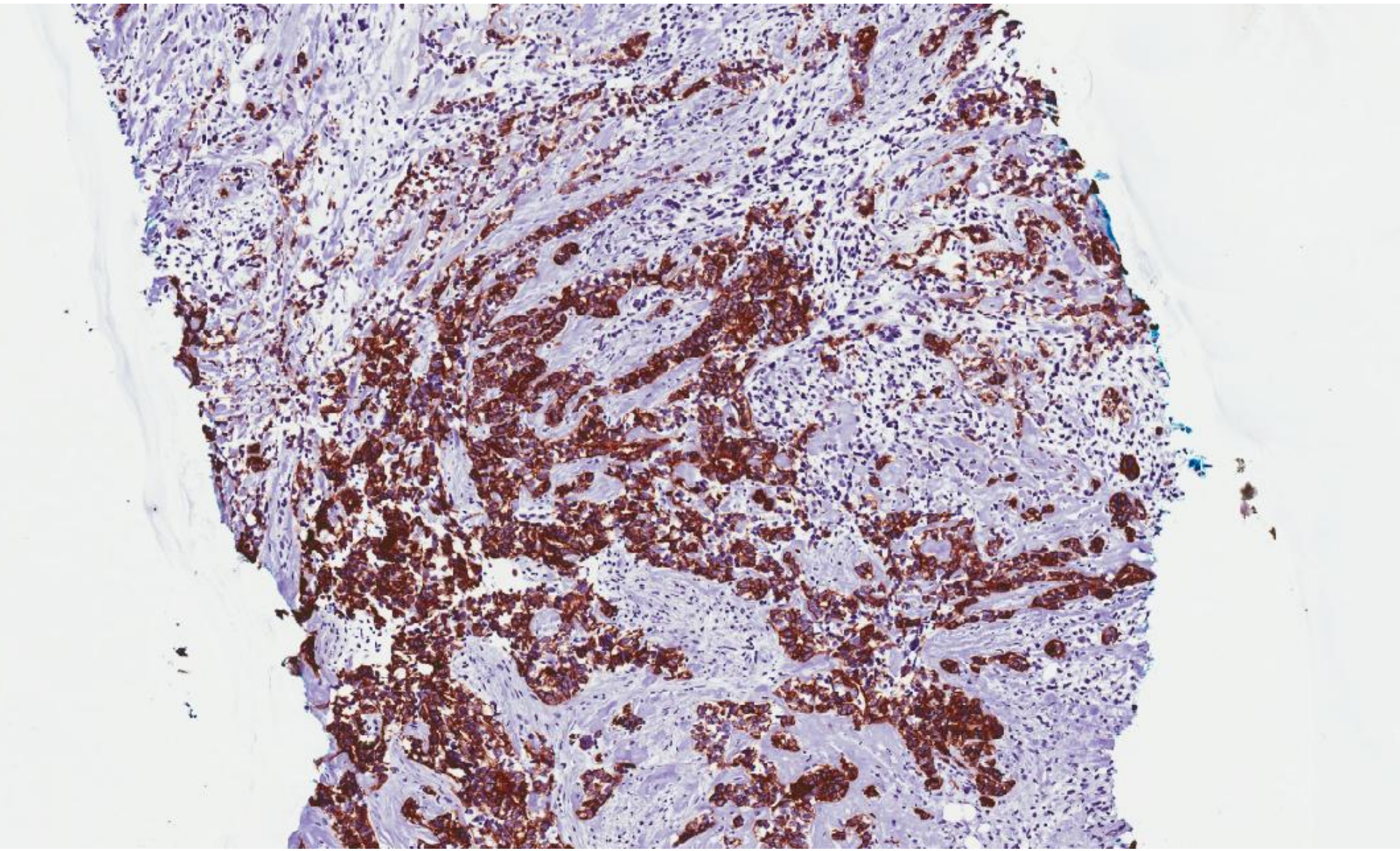




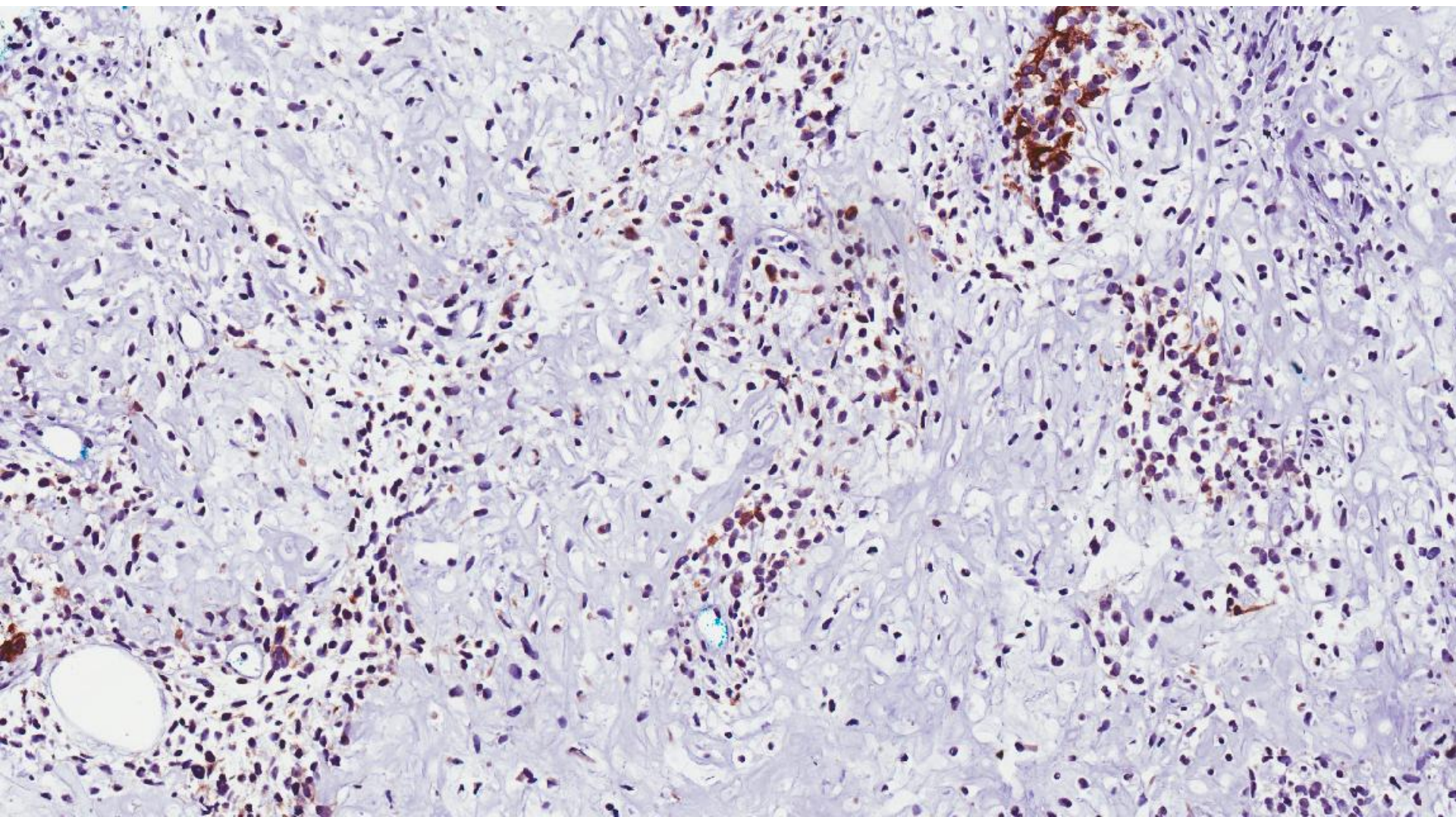




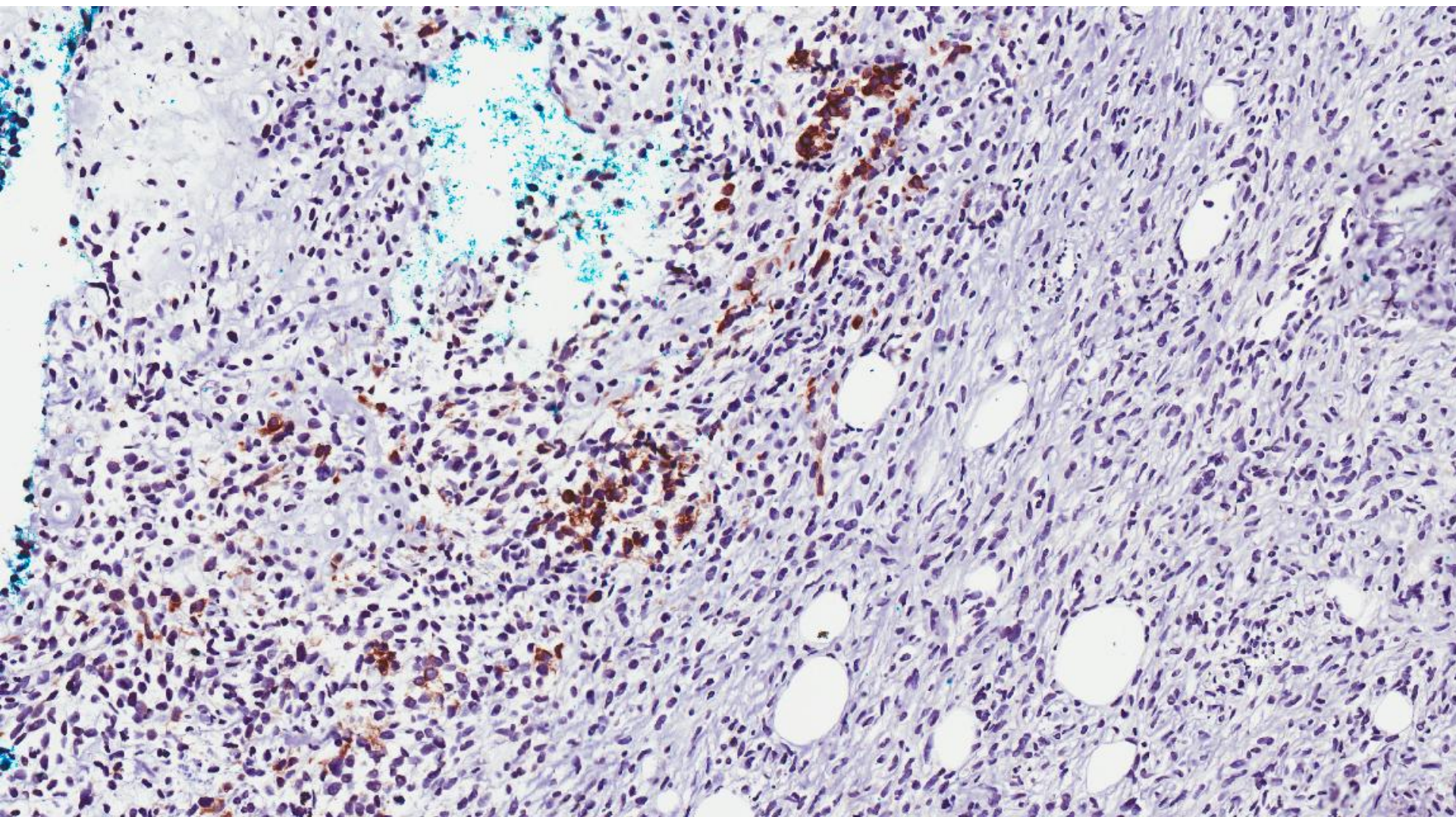
p63



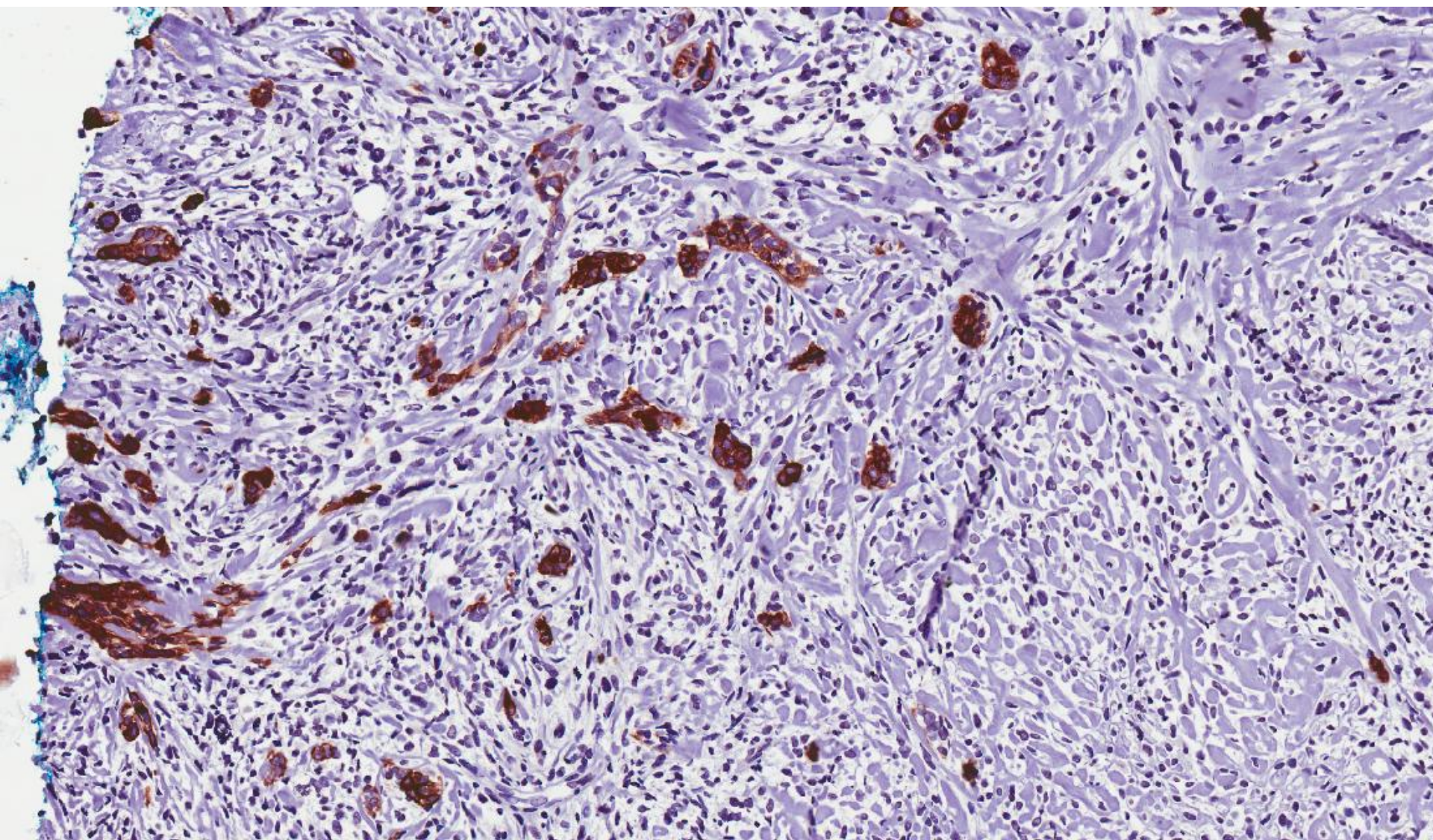
MNF116



MNF116



MNF116



MNF116

Diagnosis

- Metaplastic carcinoma.

Metaplastic carcinoma with mesenchymal differentiation

- Admixture of mesenchymal elements often present: chondroid, osseous, rhabdomyoblastic, neuroglial.
- Mesenchymal elements can range from differentiated with minimal atypia, to frankly malignant features.
- Matrix producing carcinoma refers to metaplastic carcinoma in which there is an abrupt transition from epithelial to mesenchymal components without intervening spindle cells.
- Extensive sampling may be needed to disclose the epithelial component.