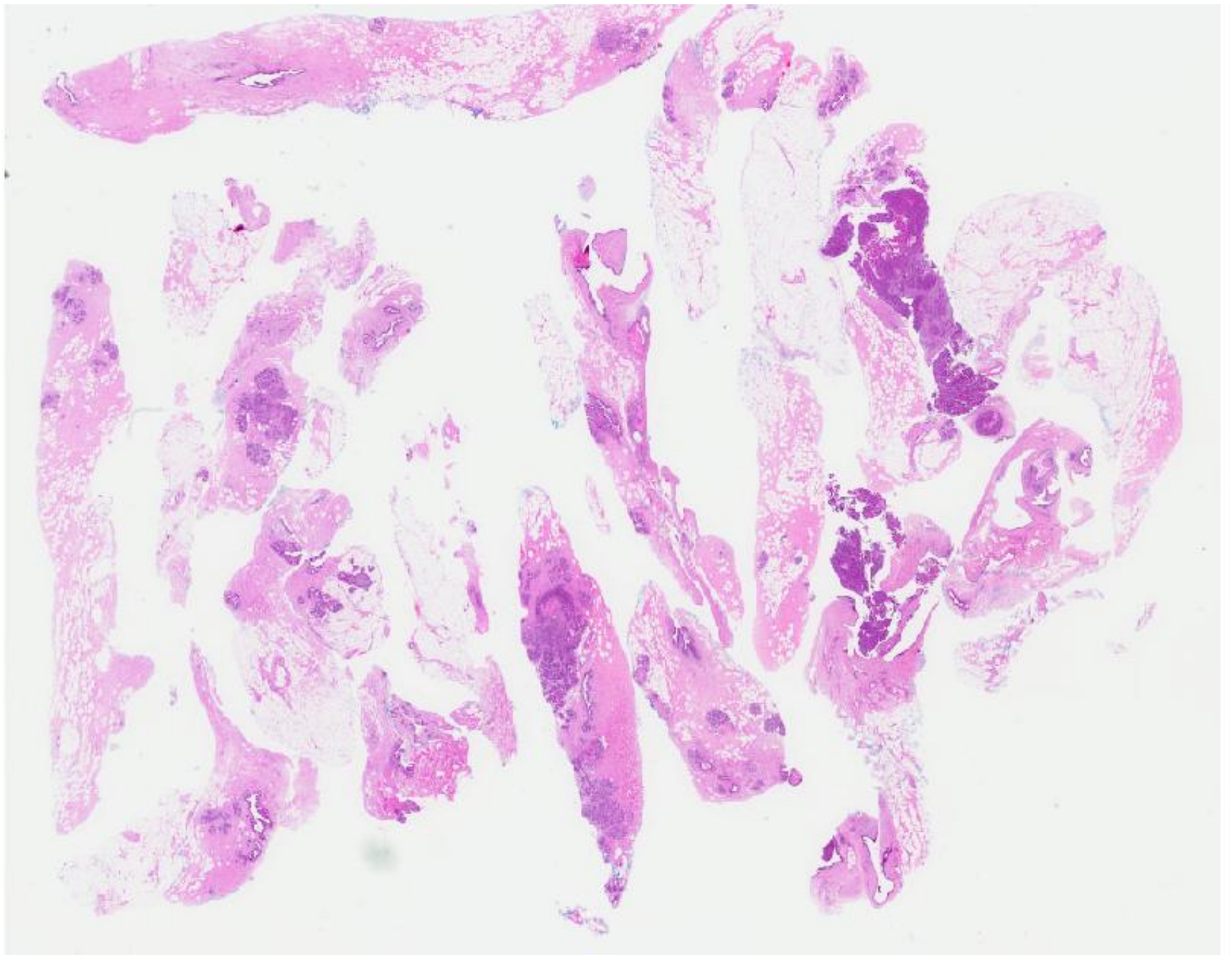
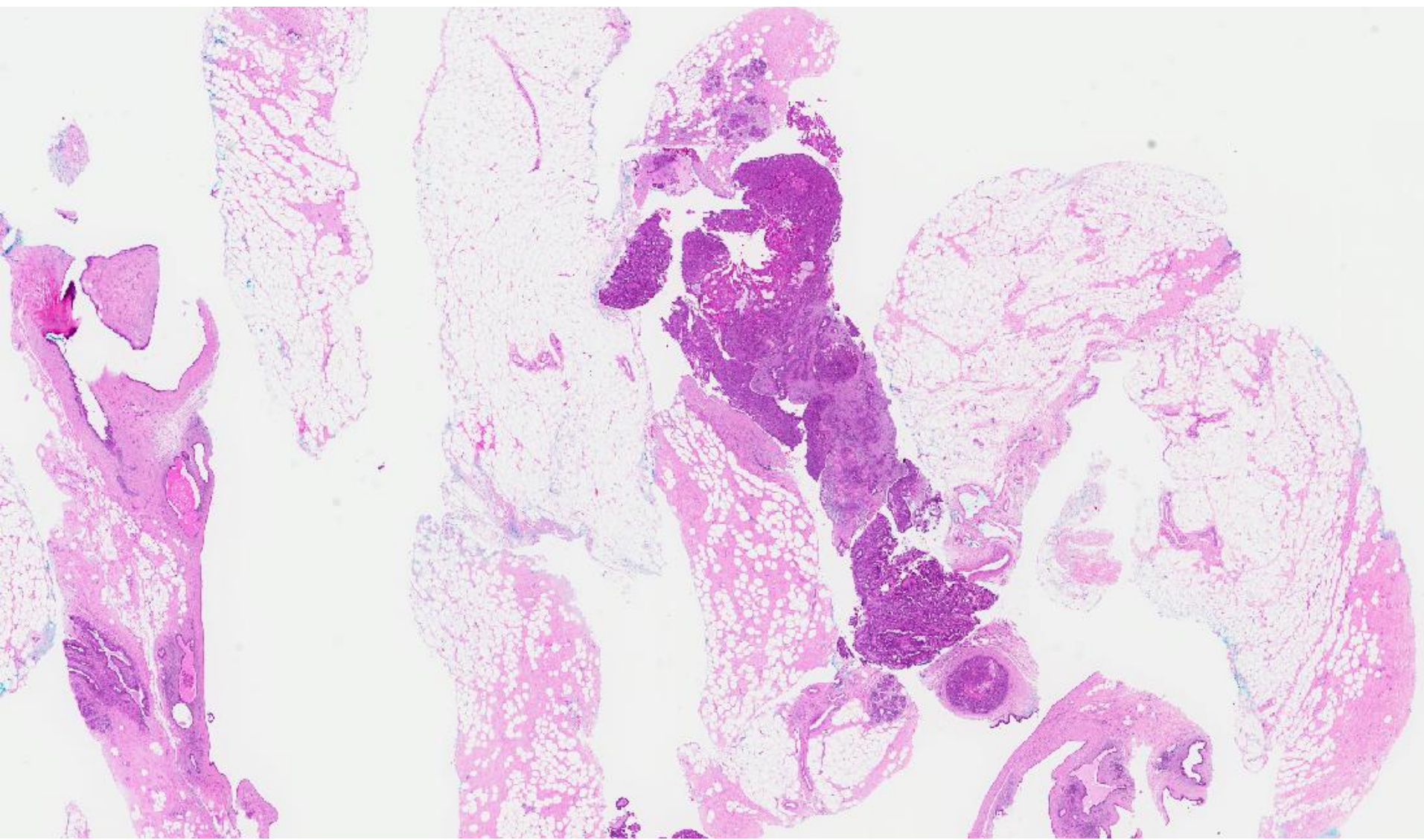
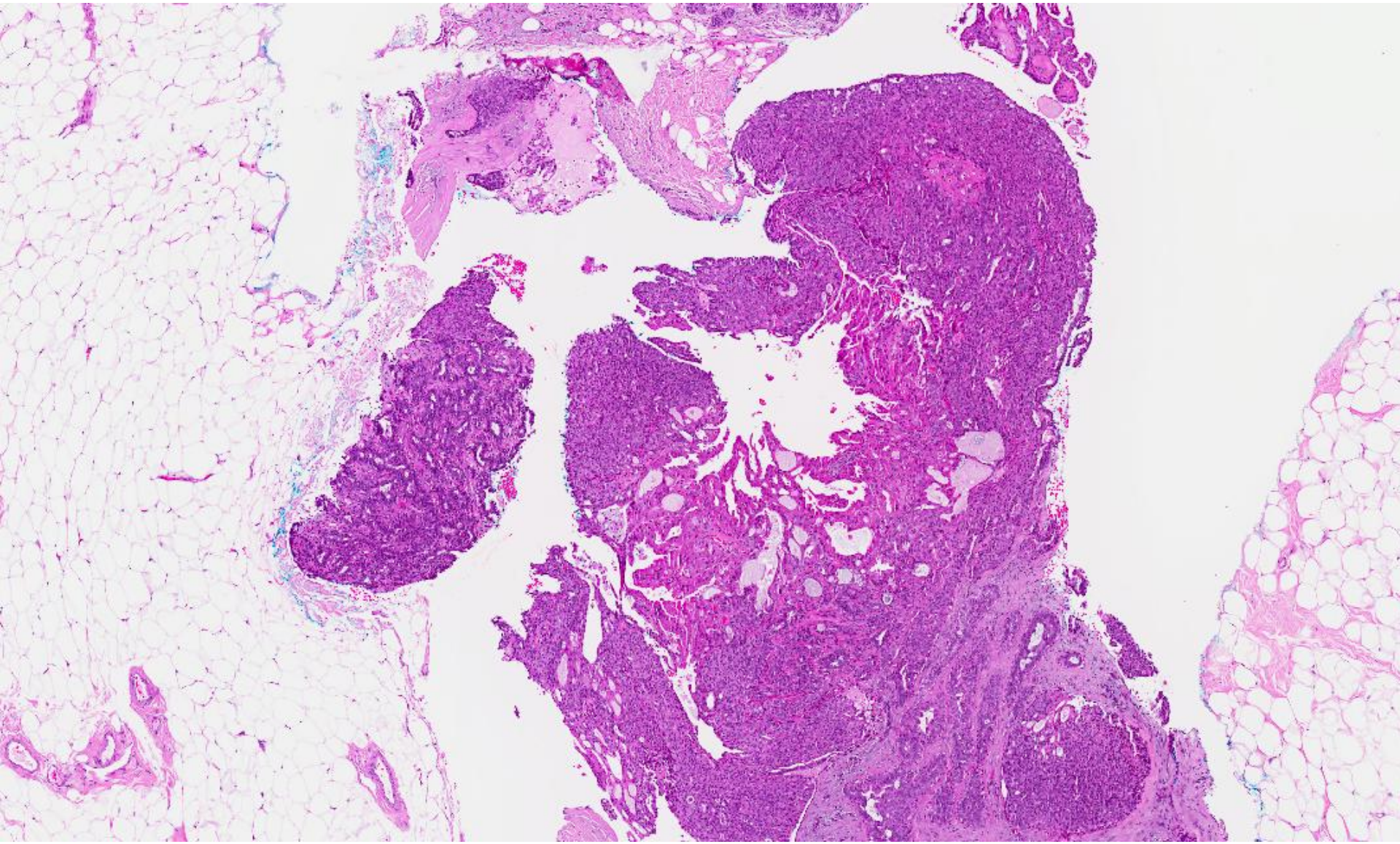


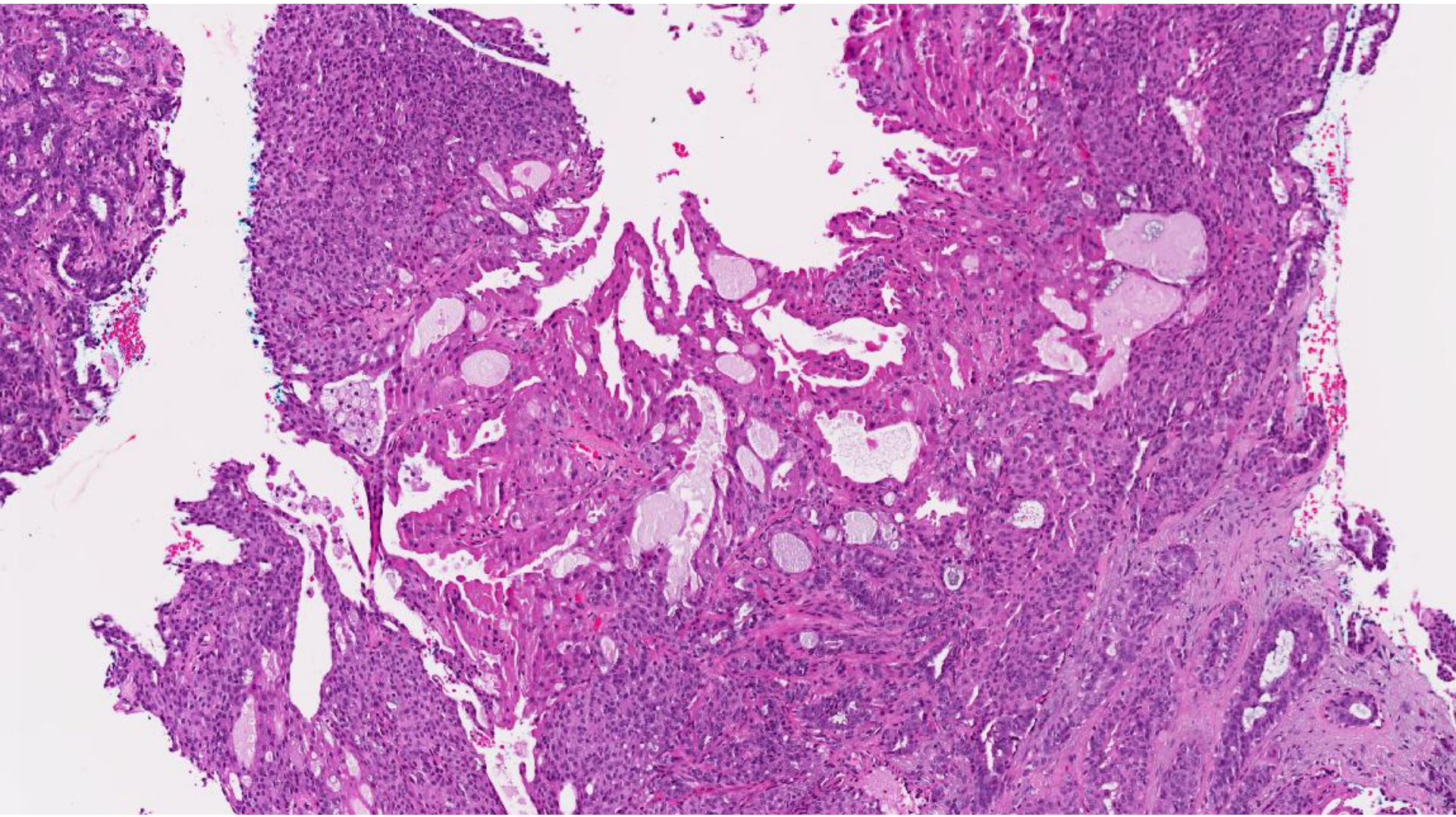
Case 32

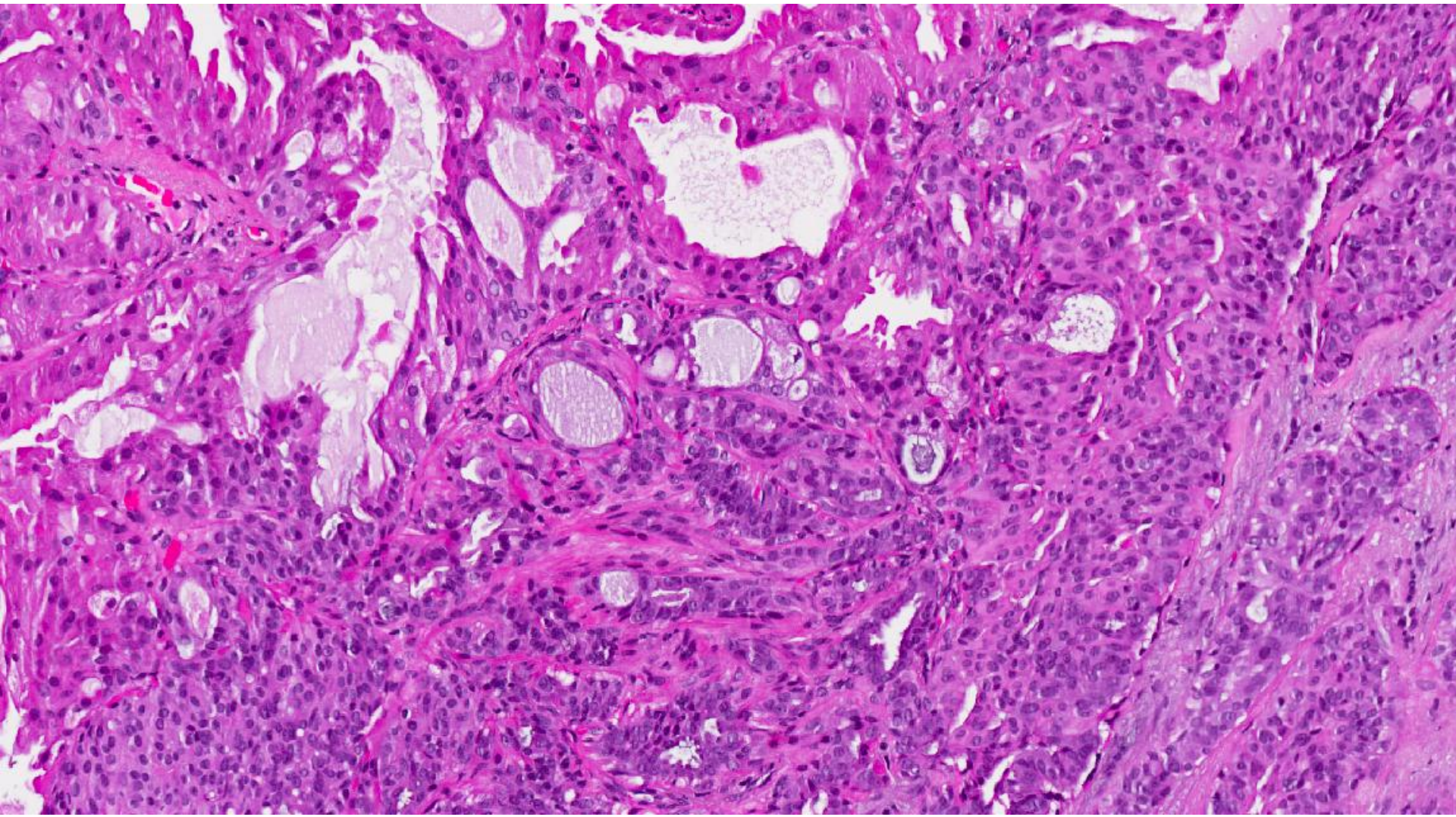
51 year old lady with a left breast lump.
Mammotome excision biopsy
performed.

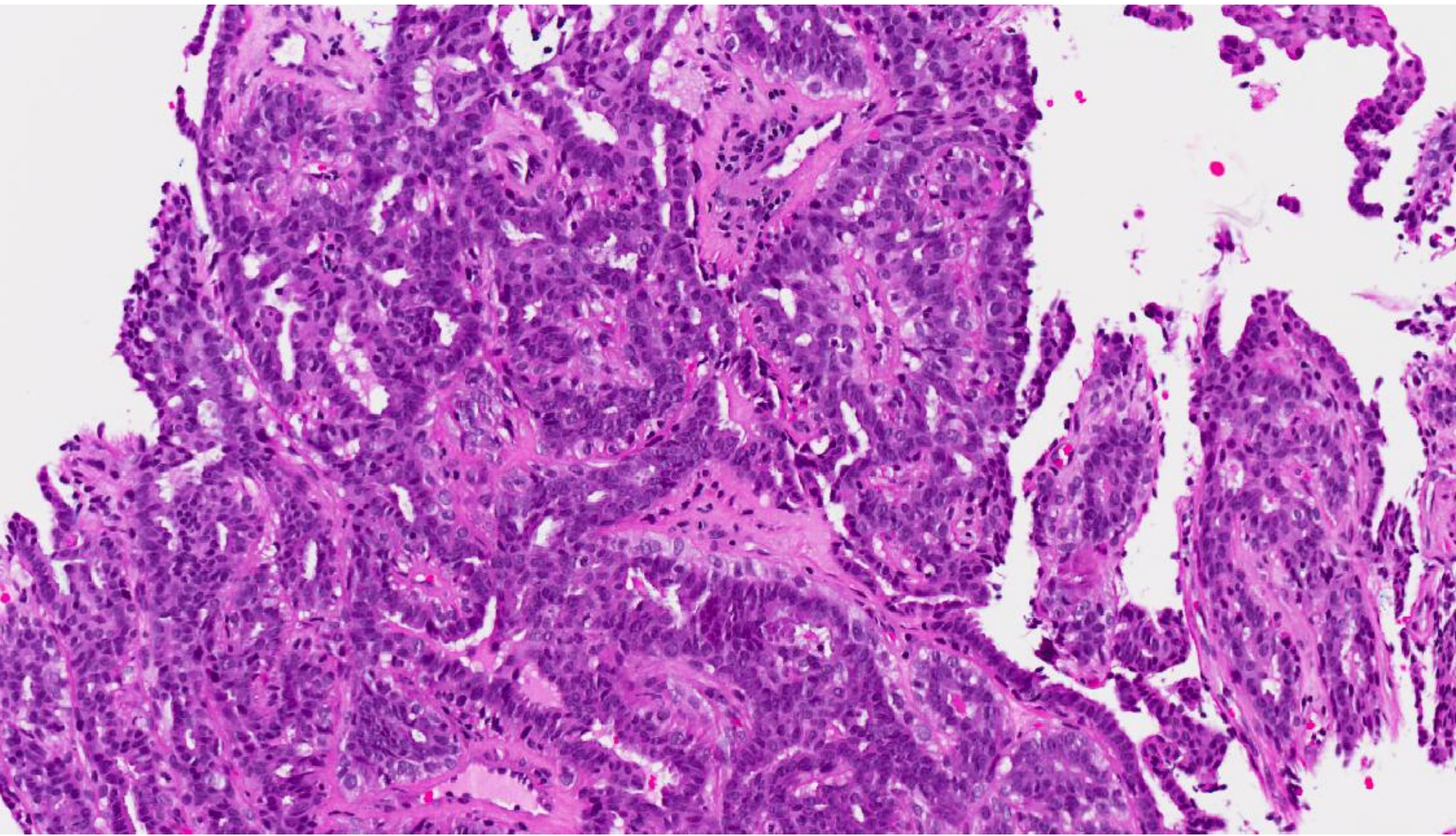


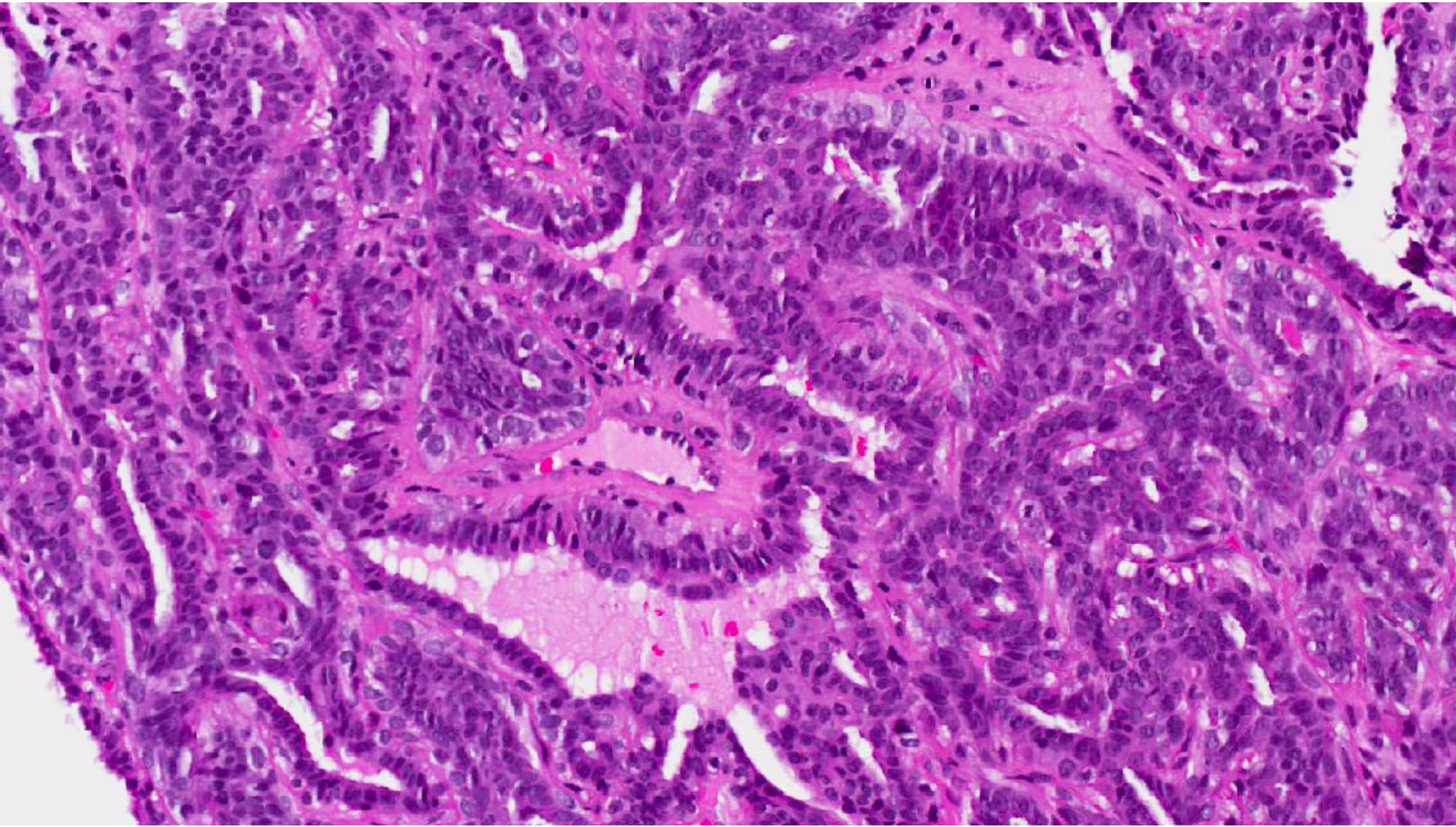


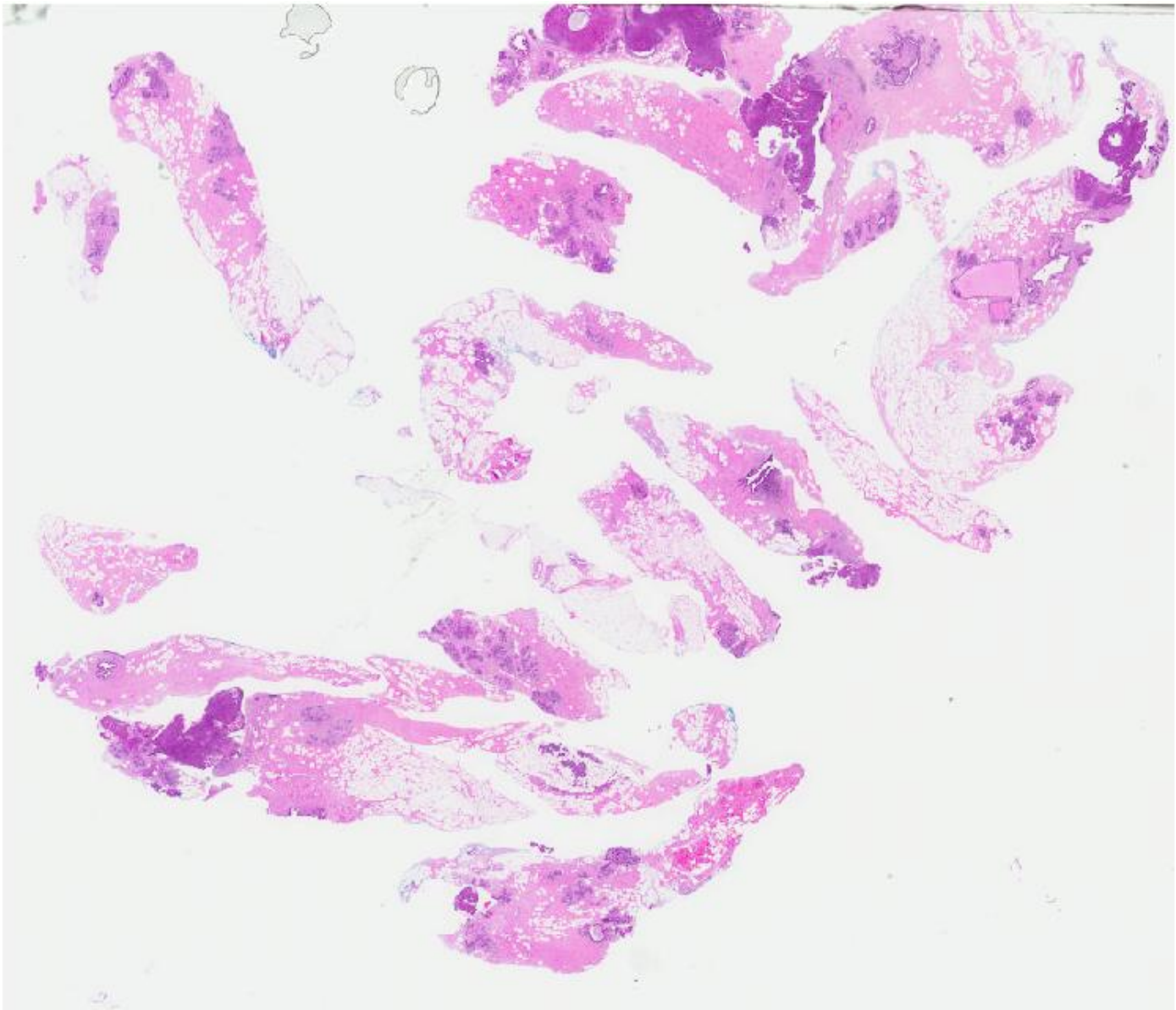


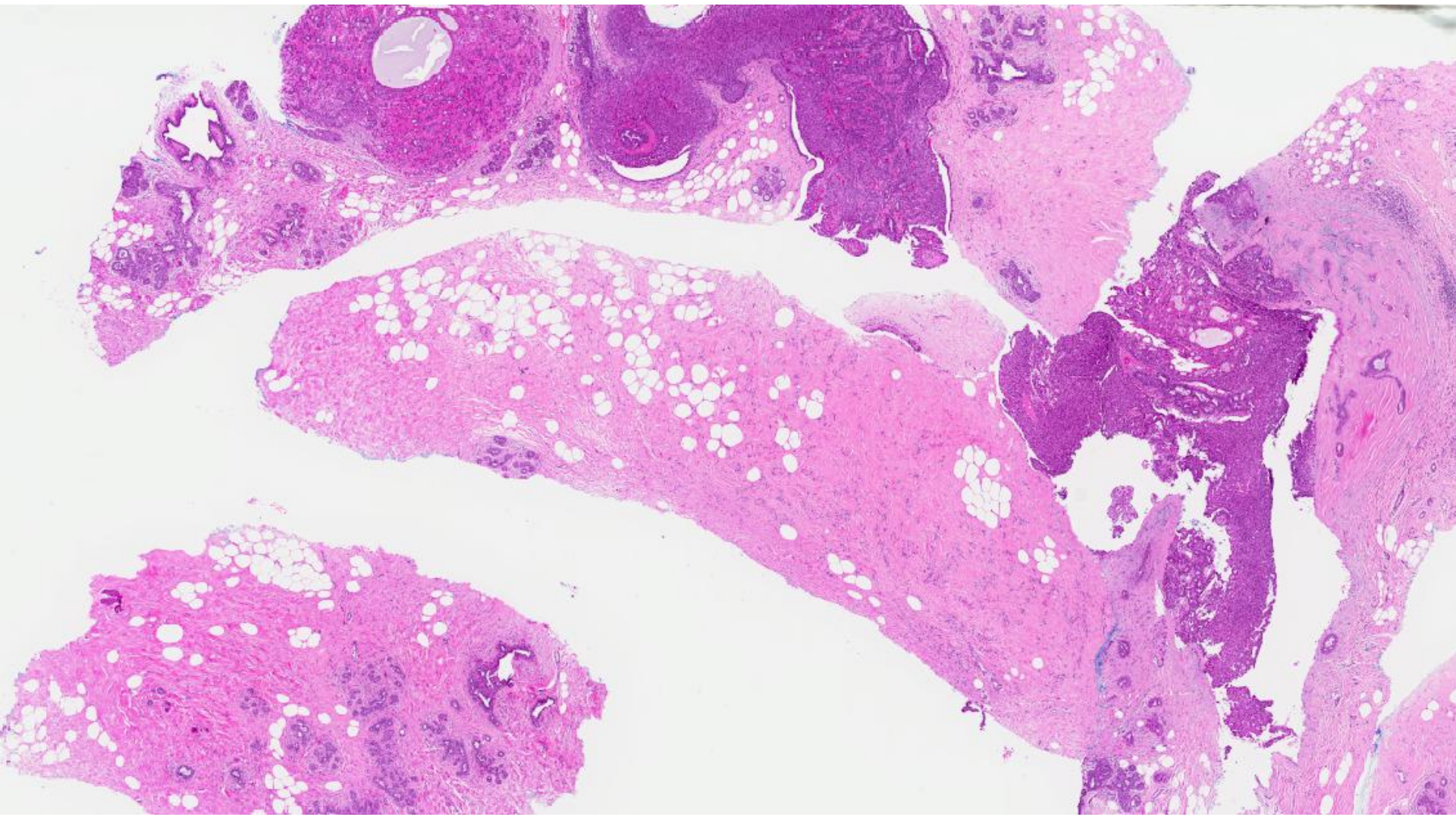


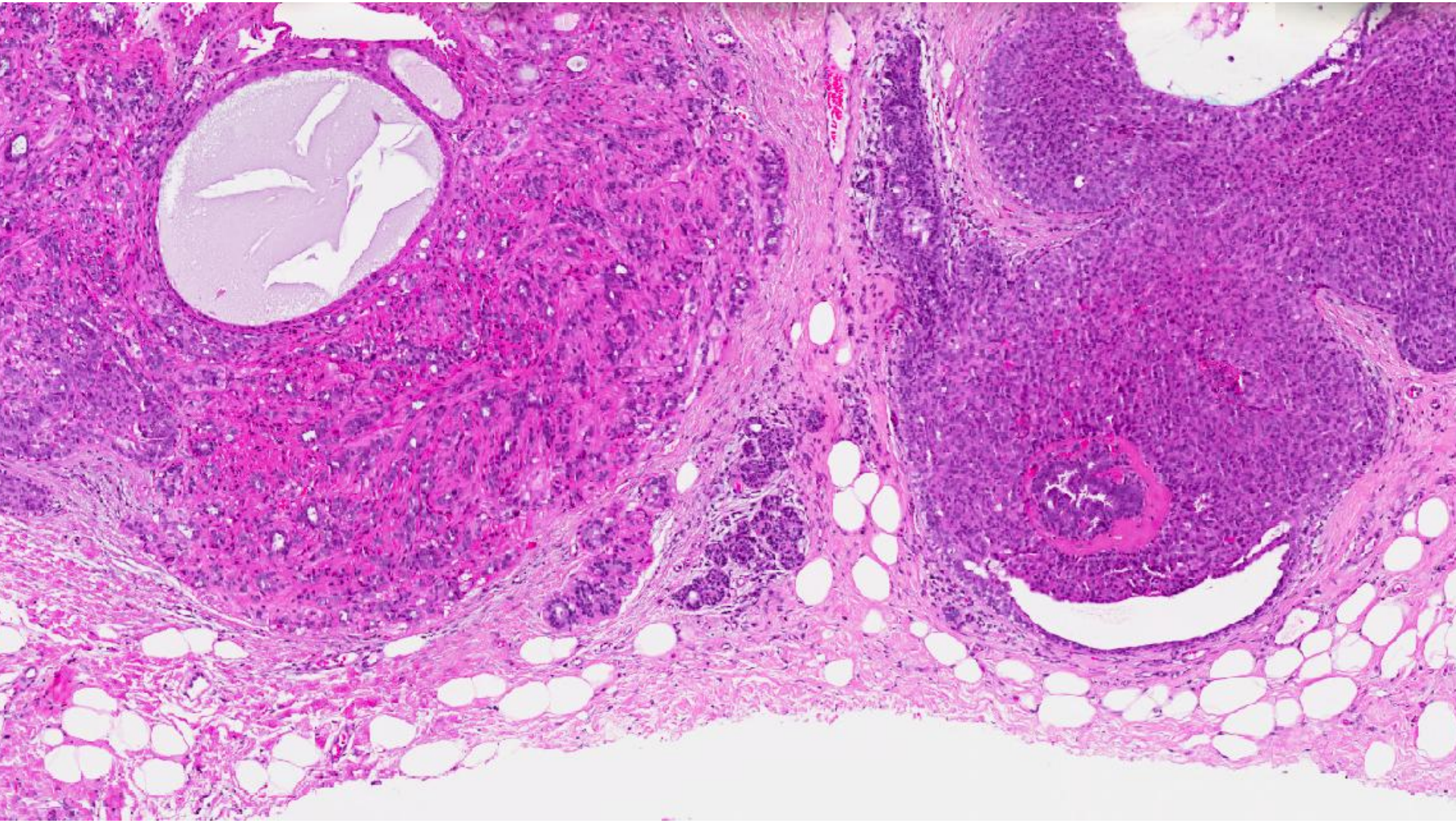


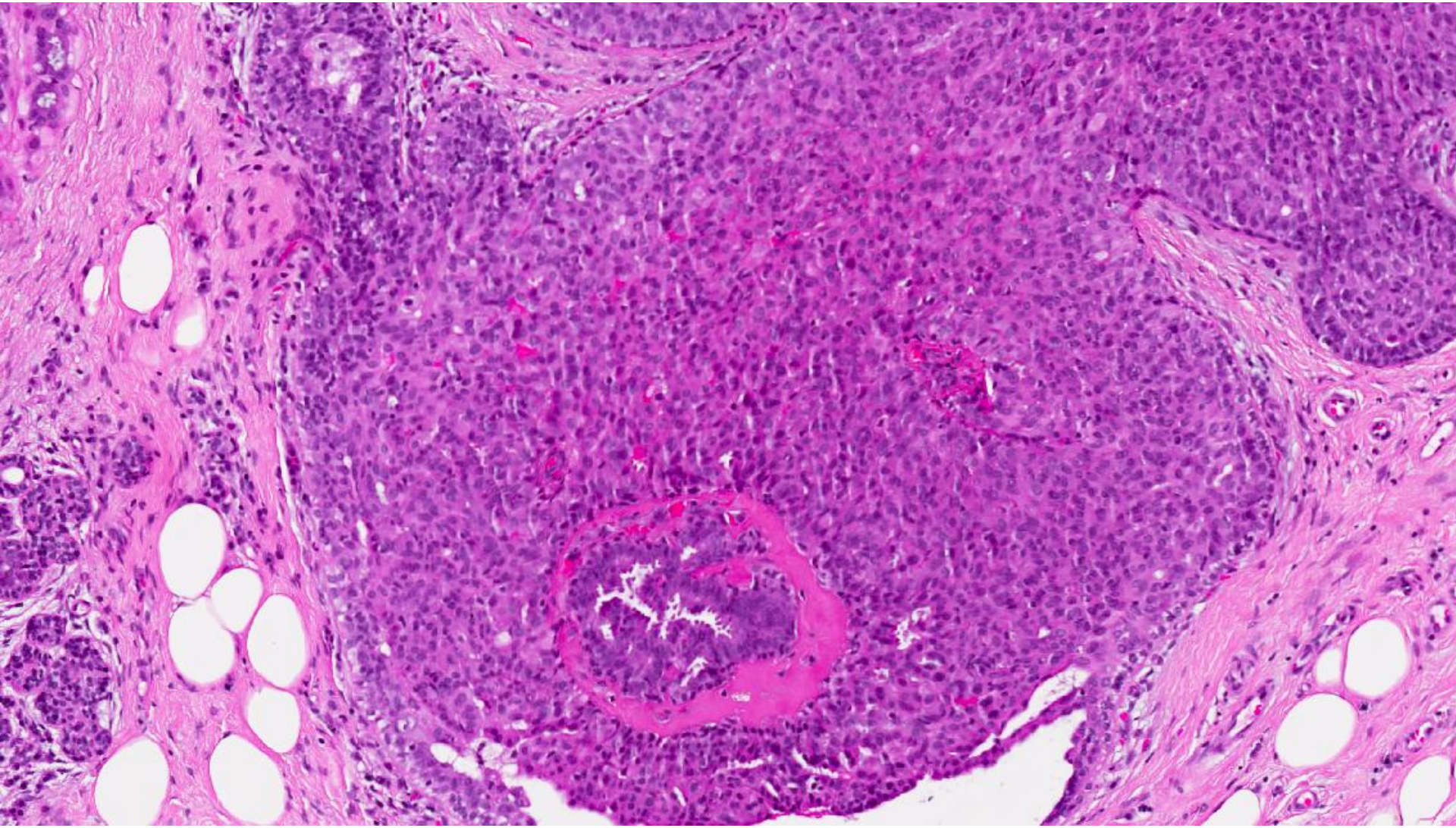


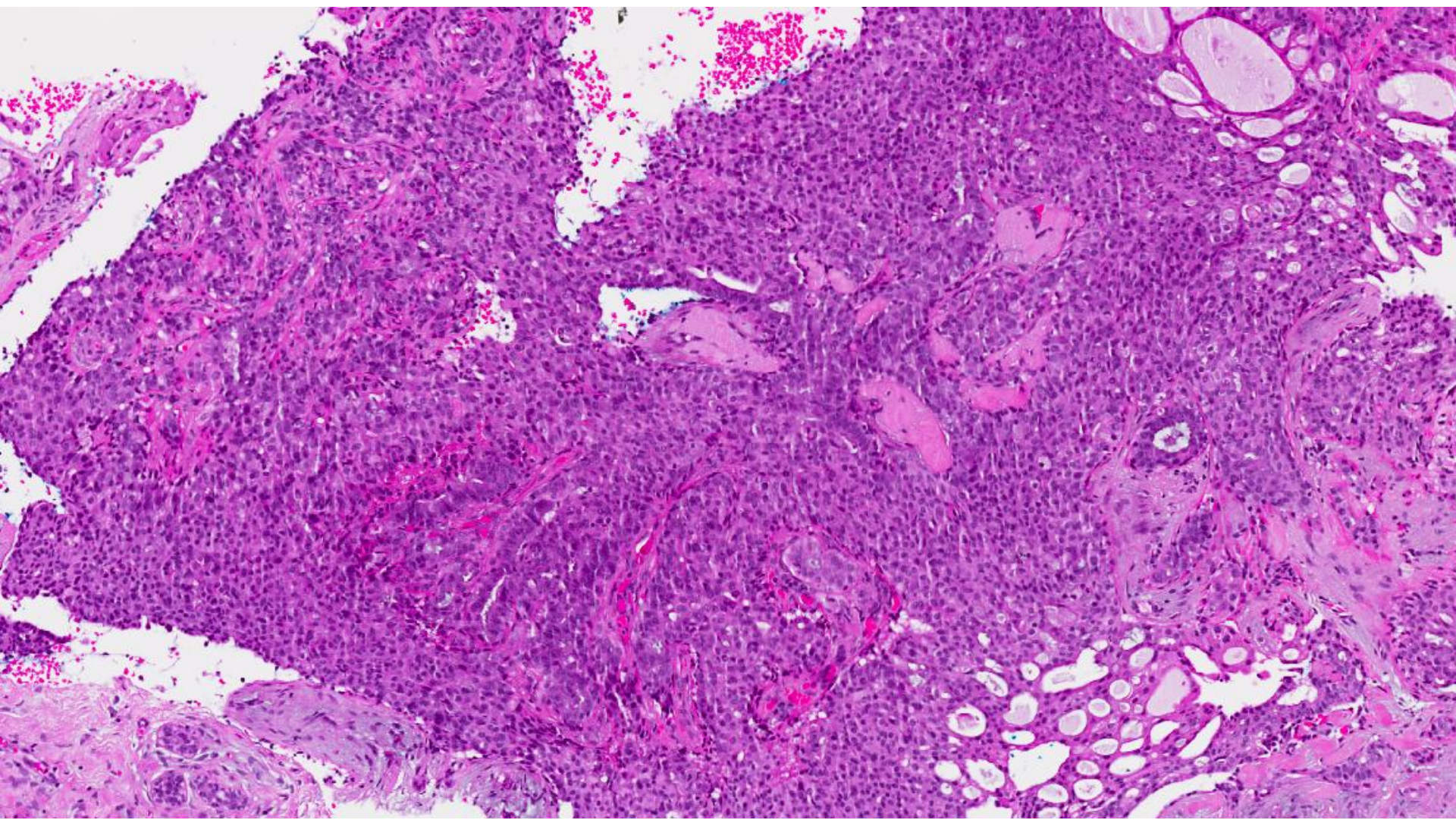












Diagnosis

- Intraductal papilloma with florid usual ductal hyperplasia.

Intraductal papilloma with florid UDH

- Light microscopy:
 - Mixed/heterogeneous cell population.
 - Apocrine metaplasia.
 - Overlapping, crowding of epithelial cells.
 - Swirling or streaming pattern.
- Immunohistochemistry:
 - CK5/6, CK14, 34 β E12: mosaic pattern of staining.
 - ER: heterogeneous reactivity.
 - Antibody cocktails, ADH5.