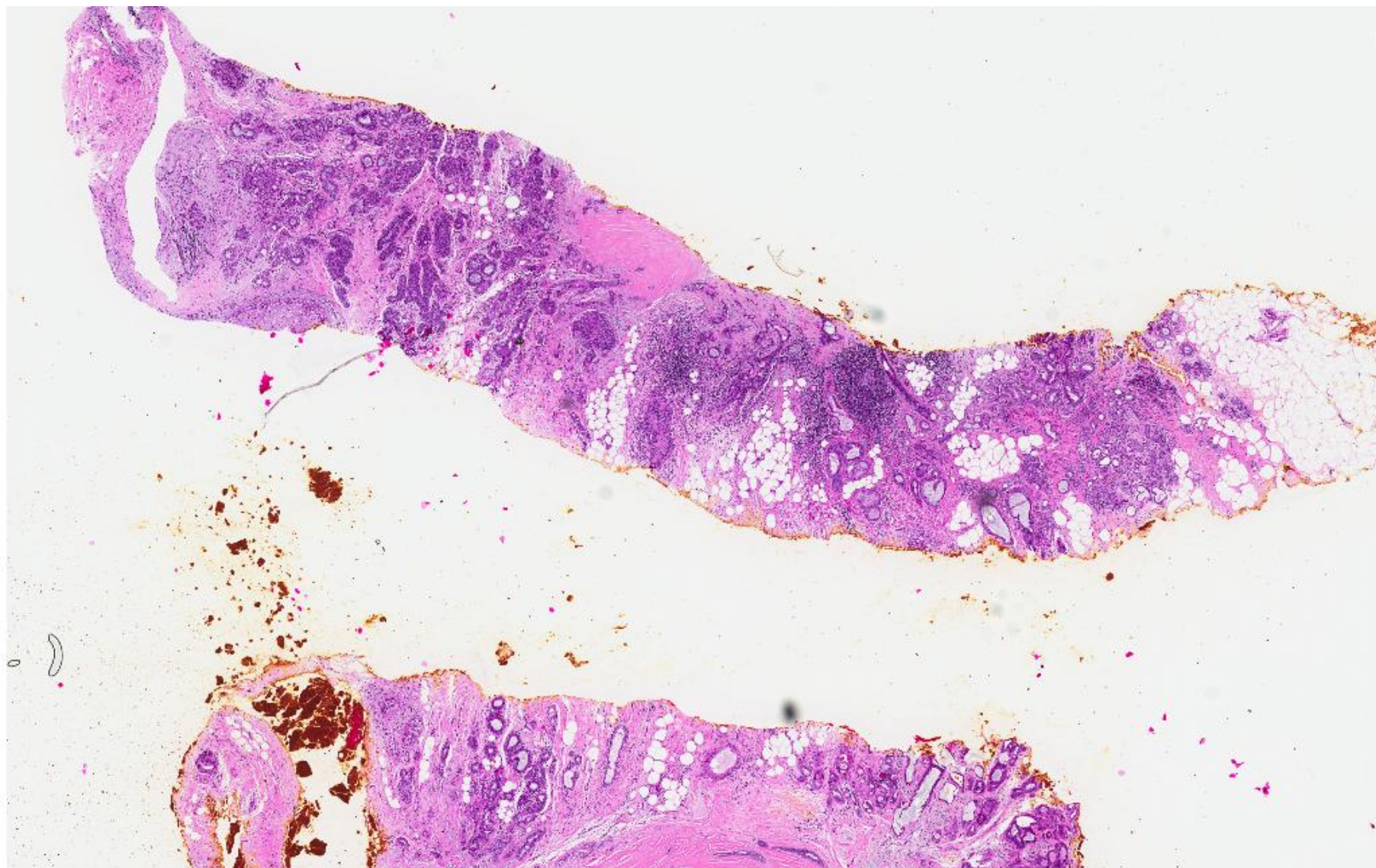


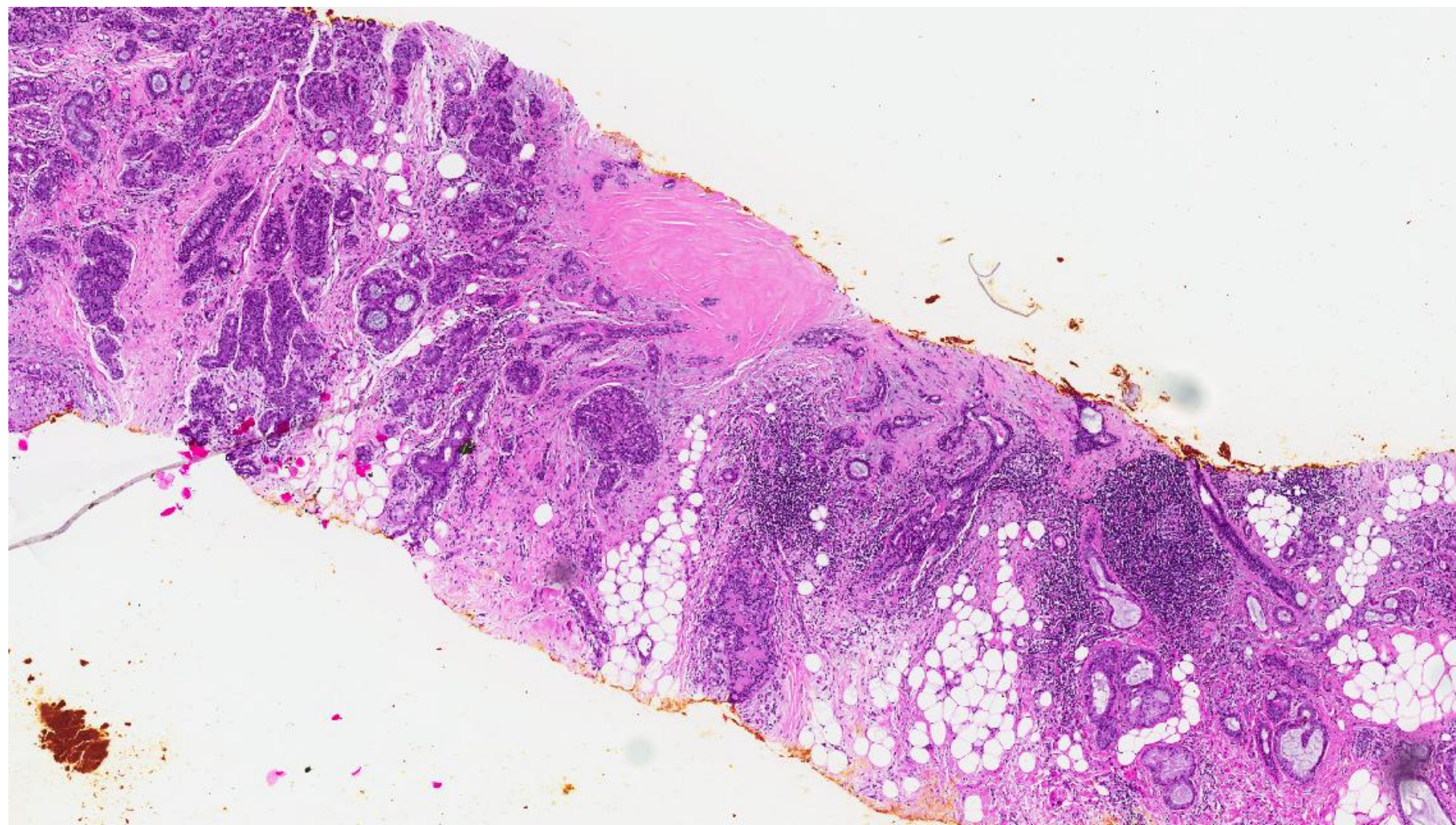
## CASE 27

50 year old lady underwent an ultrasound guided trucut biopsy for a 10 o'clock lesion in the right breast.

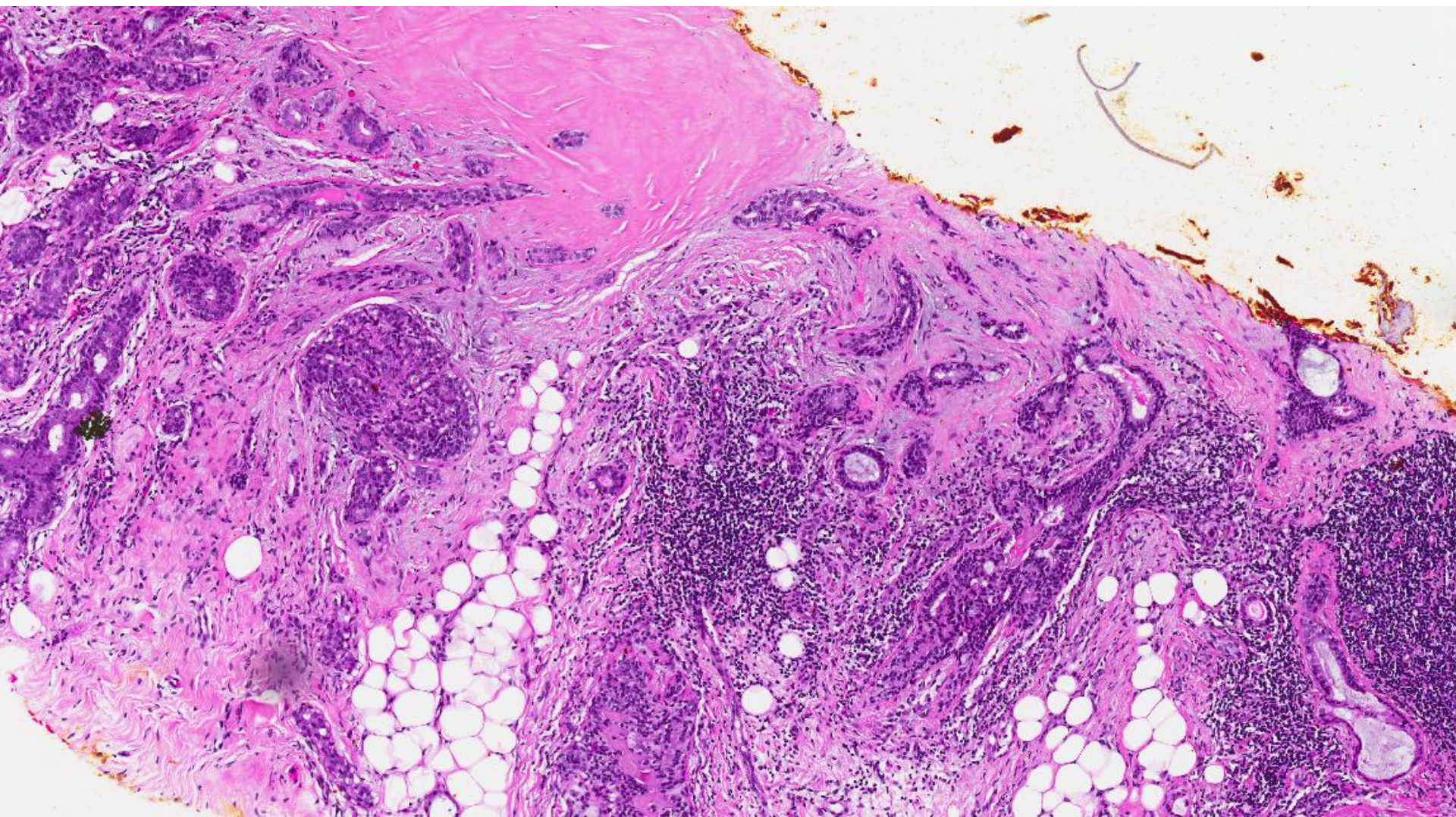




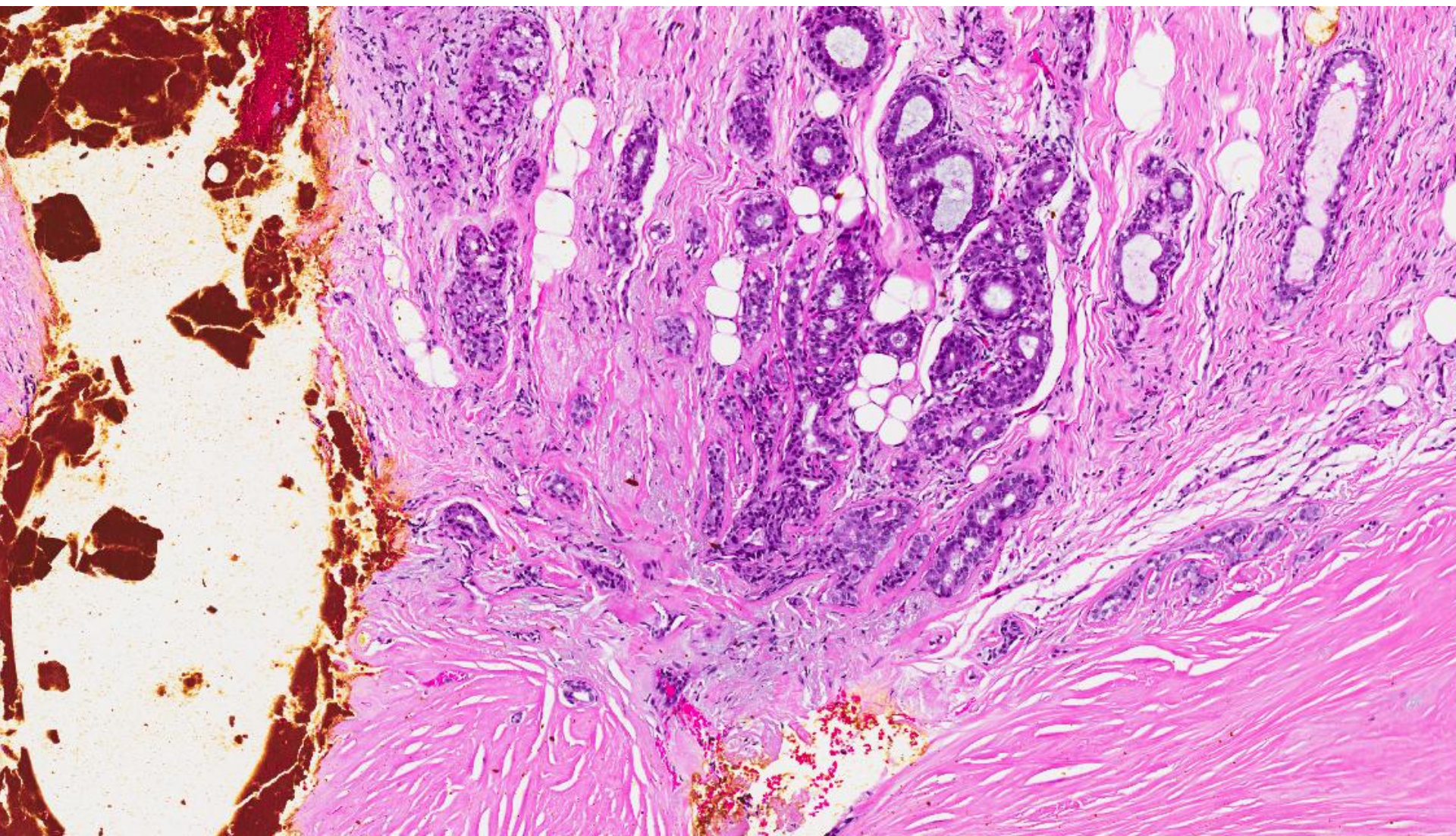




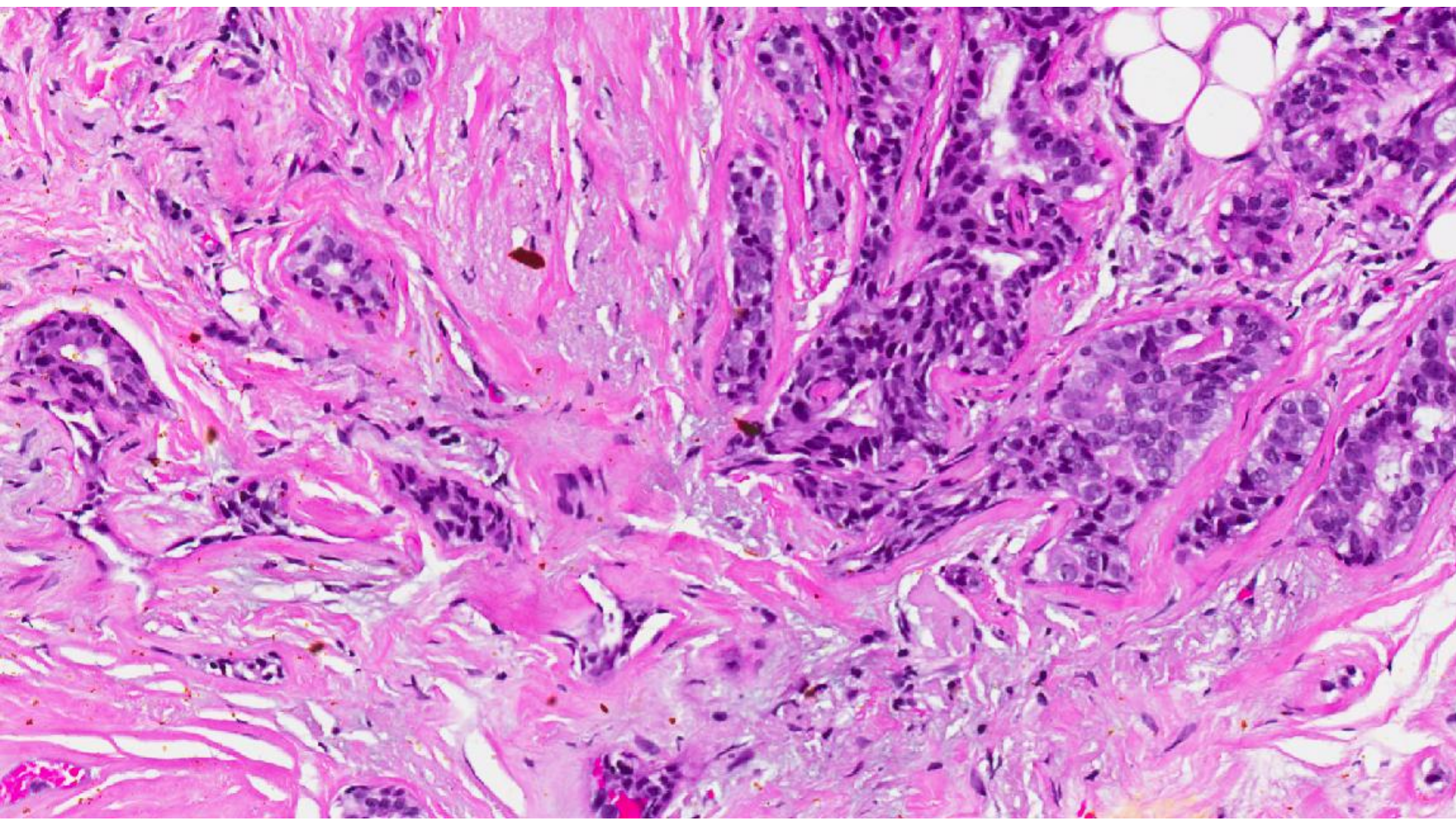




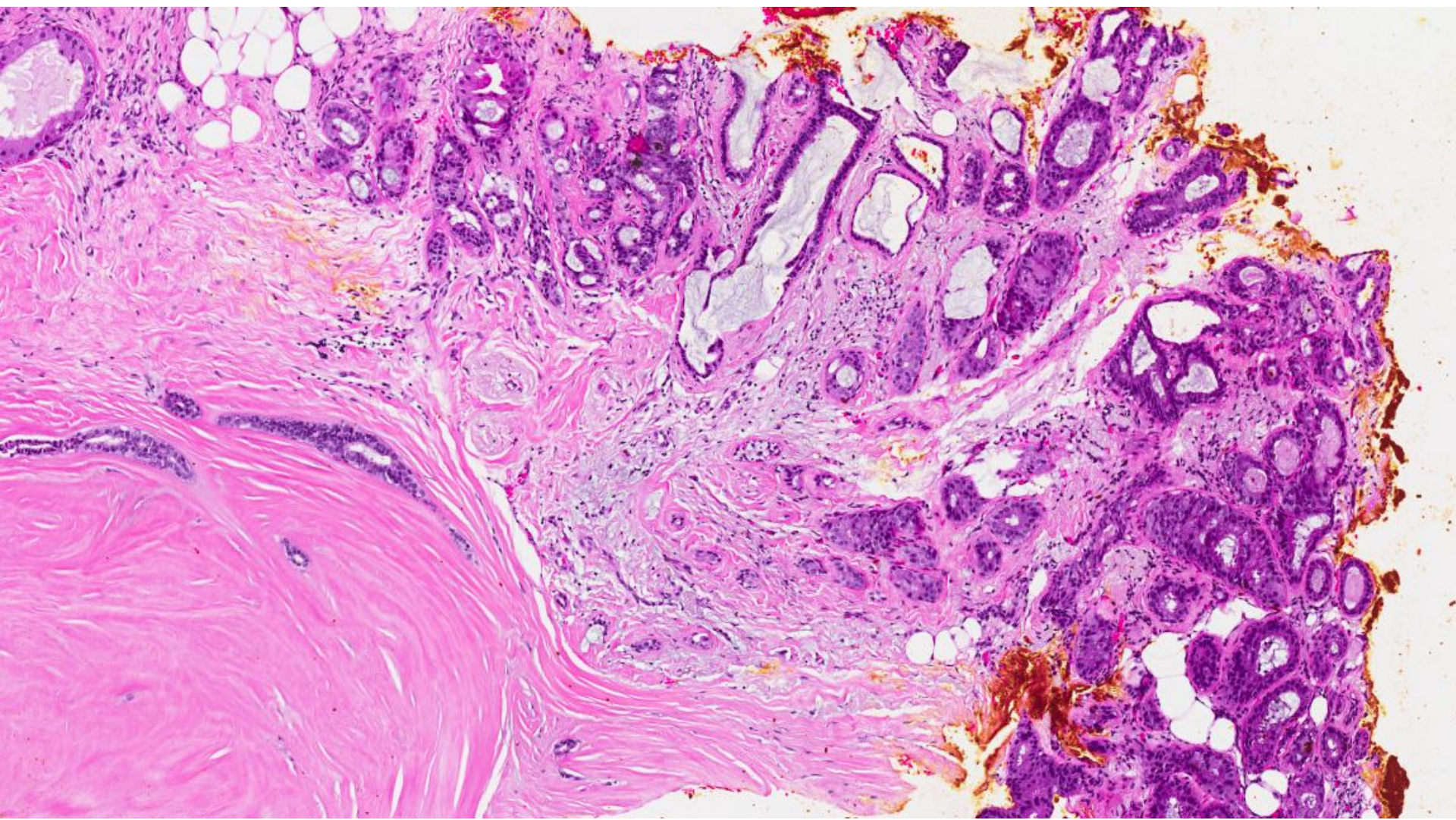




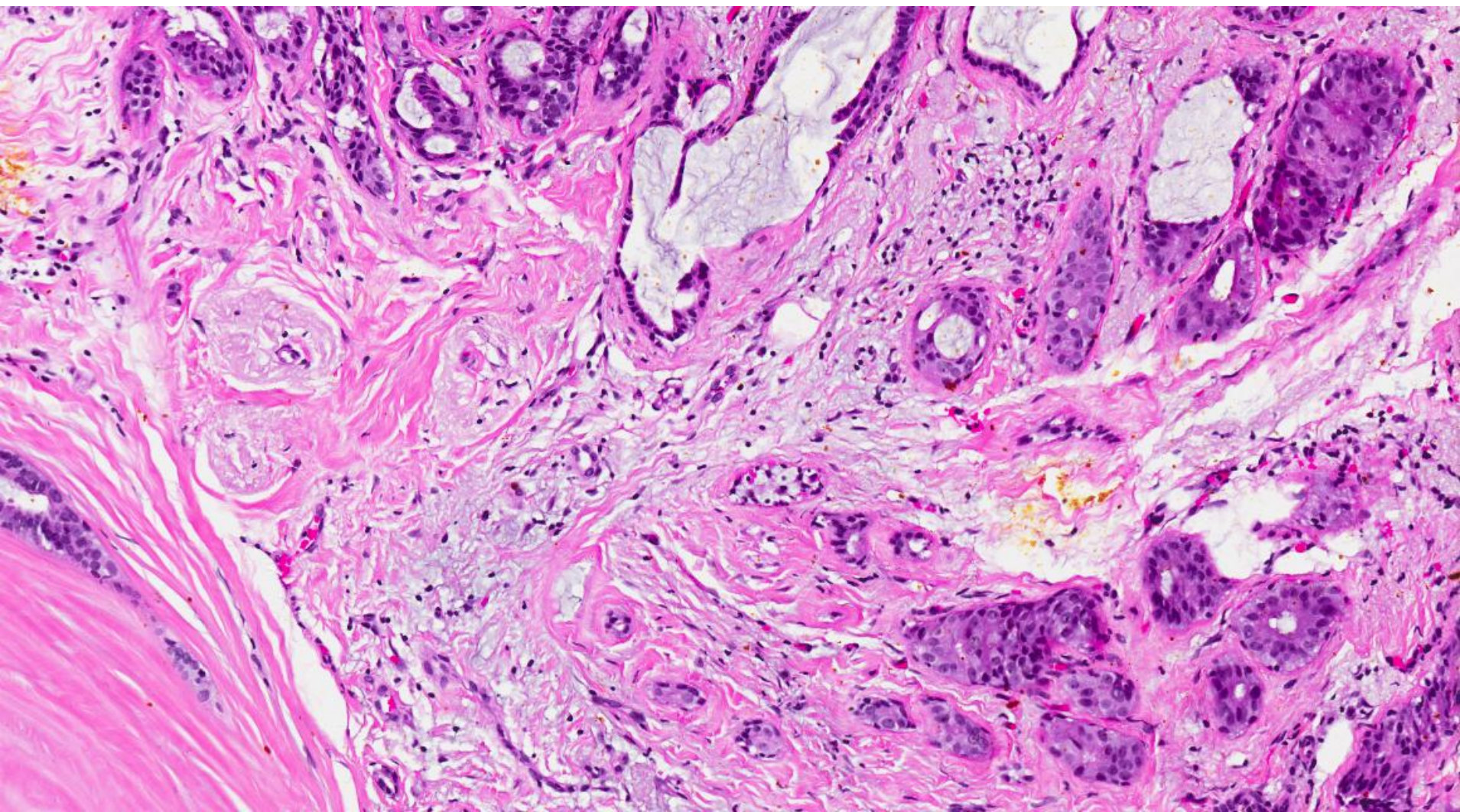














# Diagnosis

- Radial sclerosing lesion with sclerosing adenosis.



# Radial sclerosing lesion

- Benign condition comprising distorted expanded lobular architecture with variable epithelial changes.
- Radial scar, complex sclerosing lesion.
- Stellate lesion with ducts and lobules radiating from a central elastotic core.
- Fibrosis and distortion with entrapped tubules.



# Radial sclerosing lesion

- May be accompanied by atypical epithelial proliferations, DCIS and invasive cancer.
- Likelihood of sinister lesions increases with size of the radial sclerosing lesion.
- Complete excision is needed.