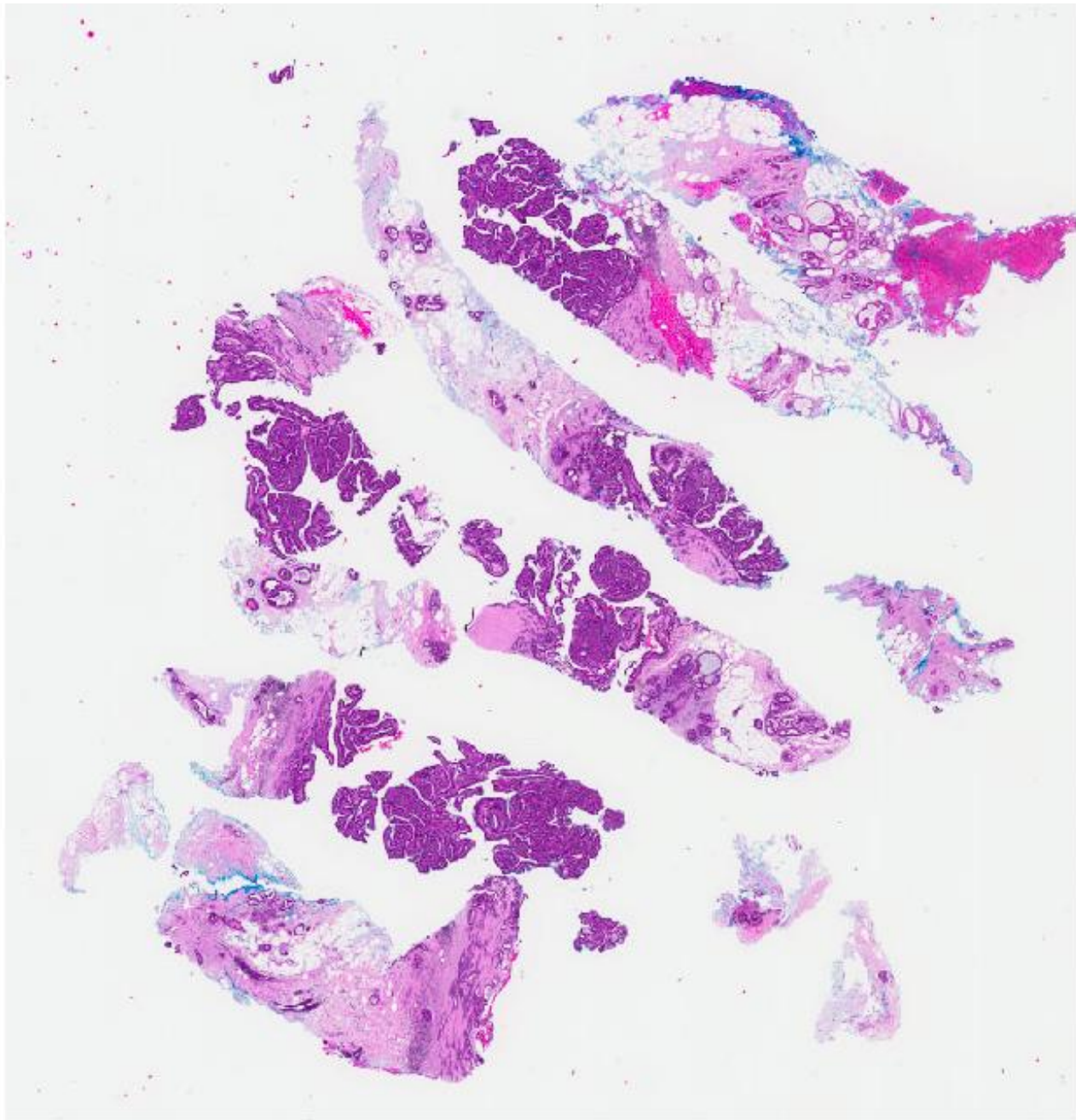


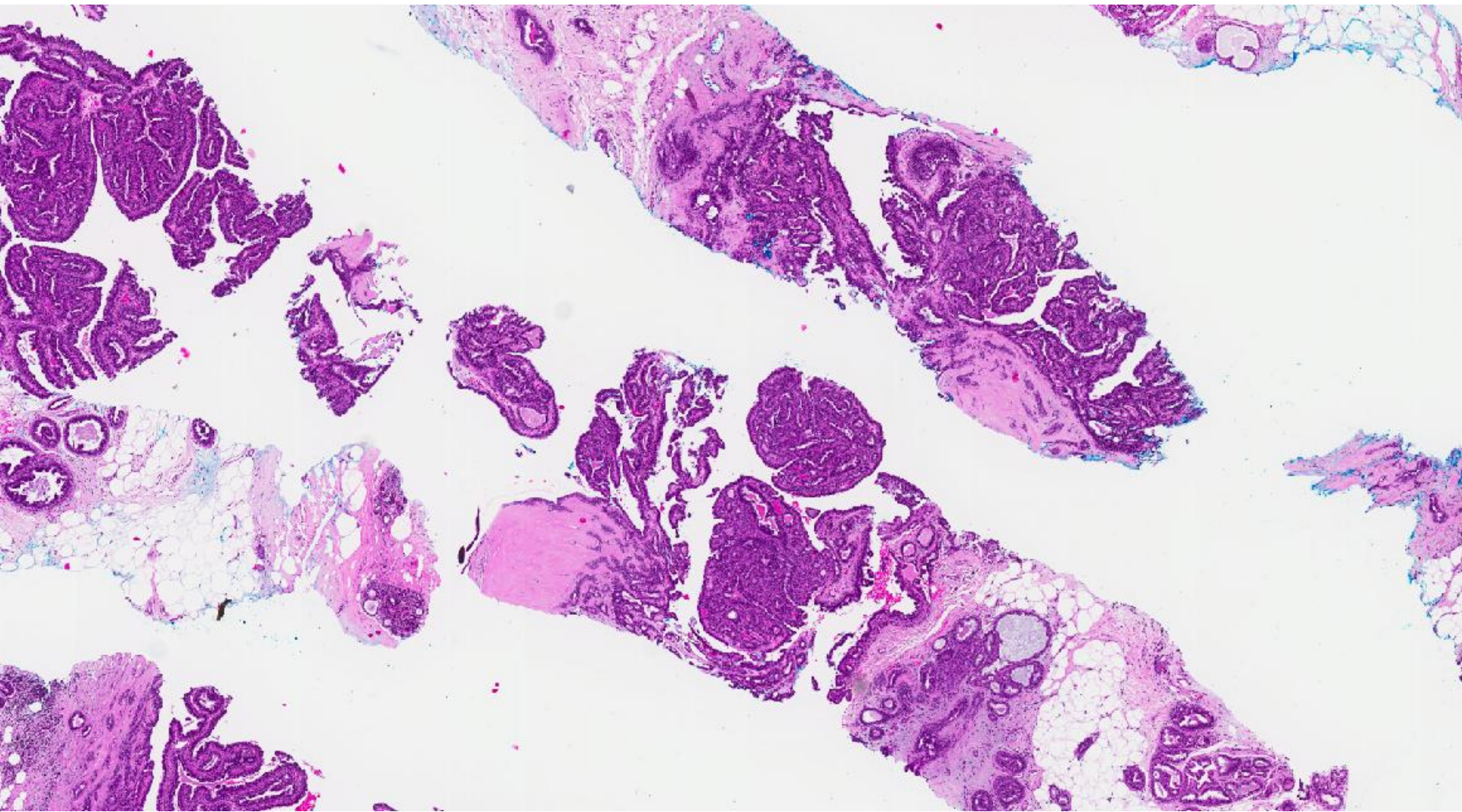
CASE 26

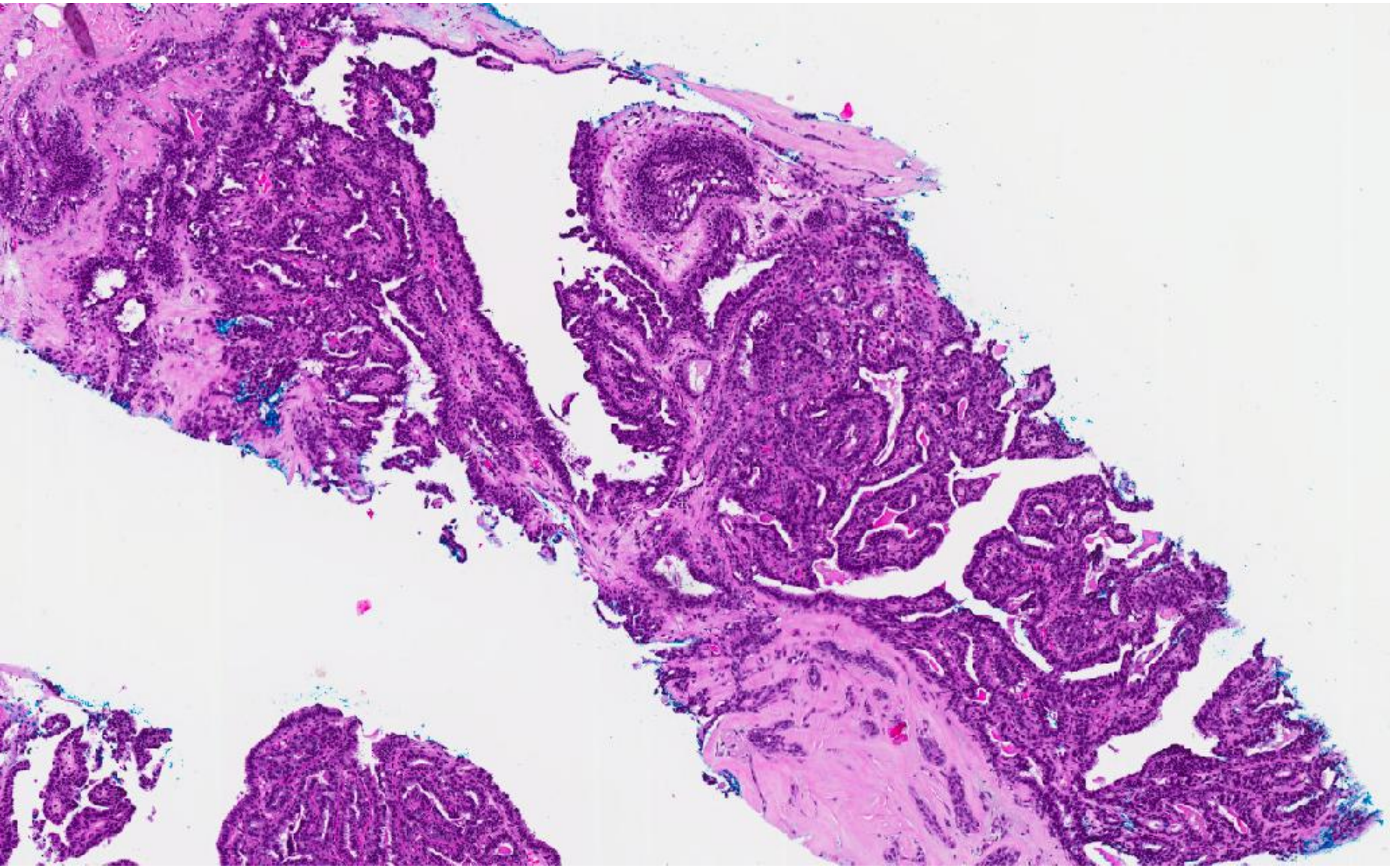
66 year old Chinese lady participated in BreastScreen Singapore.

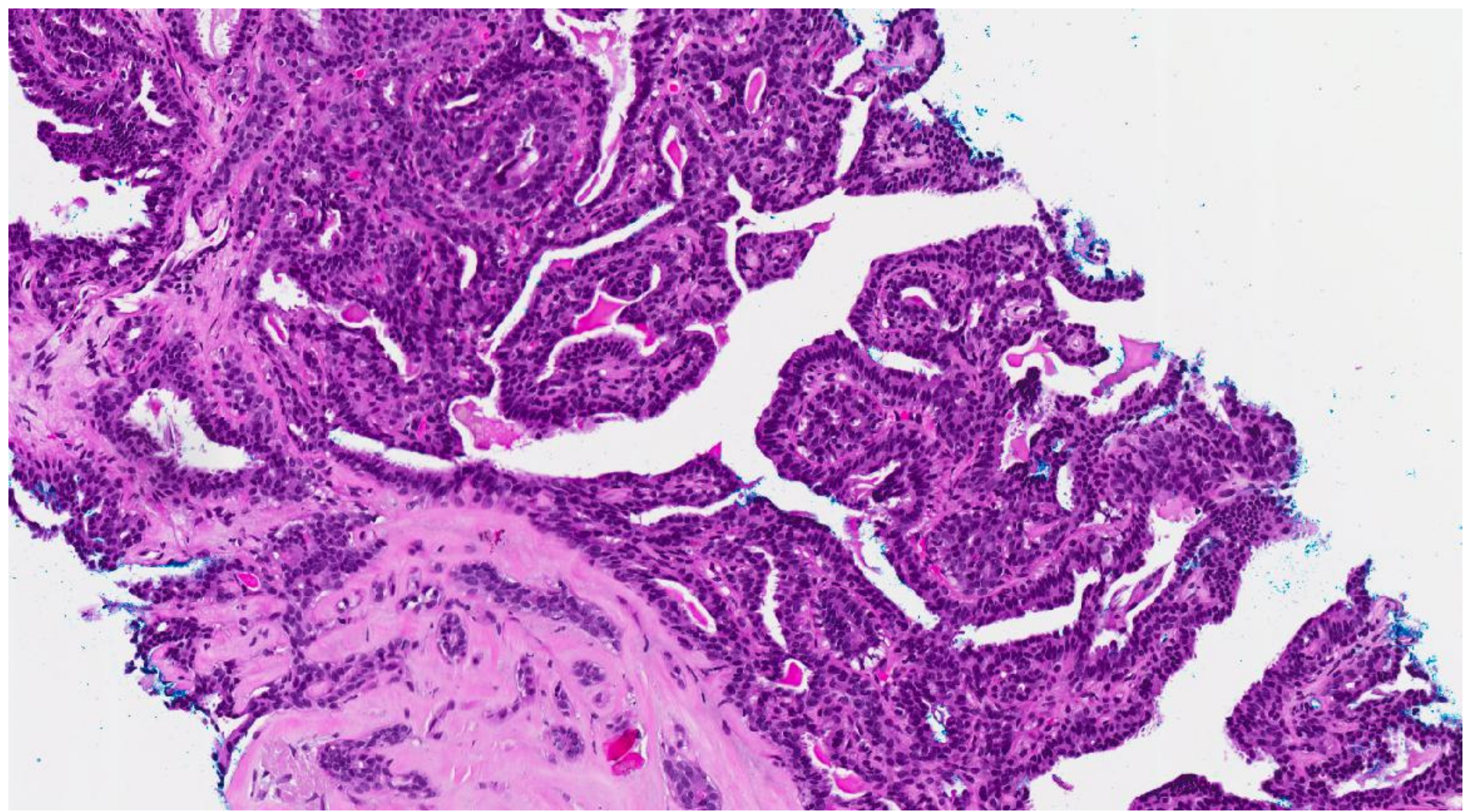
A left breast nodule, deemed radiologically indeterminate, was found.

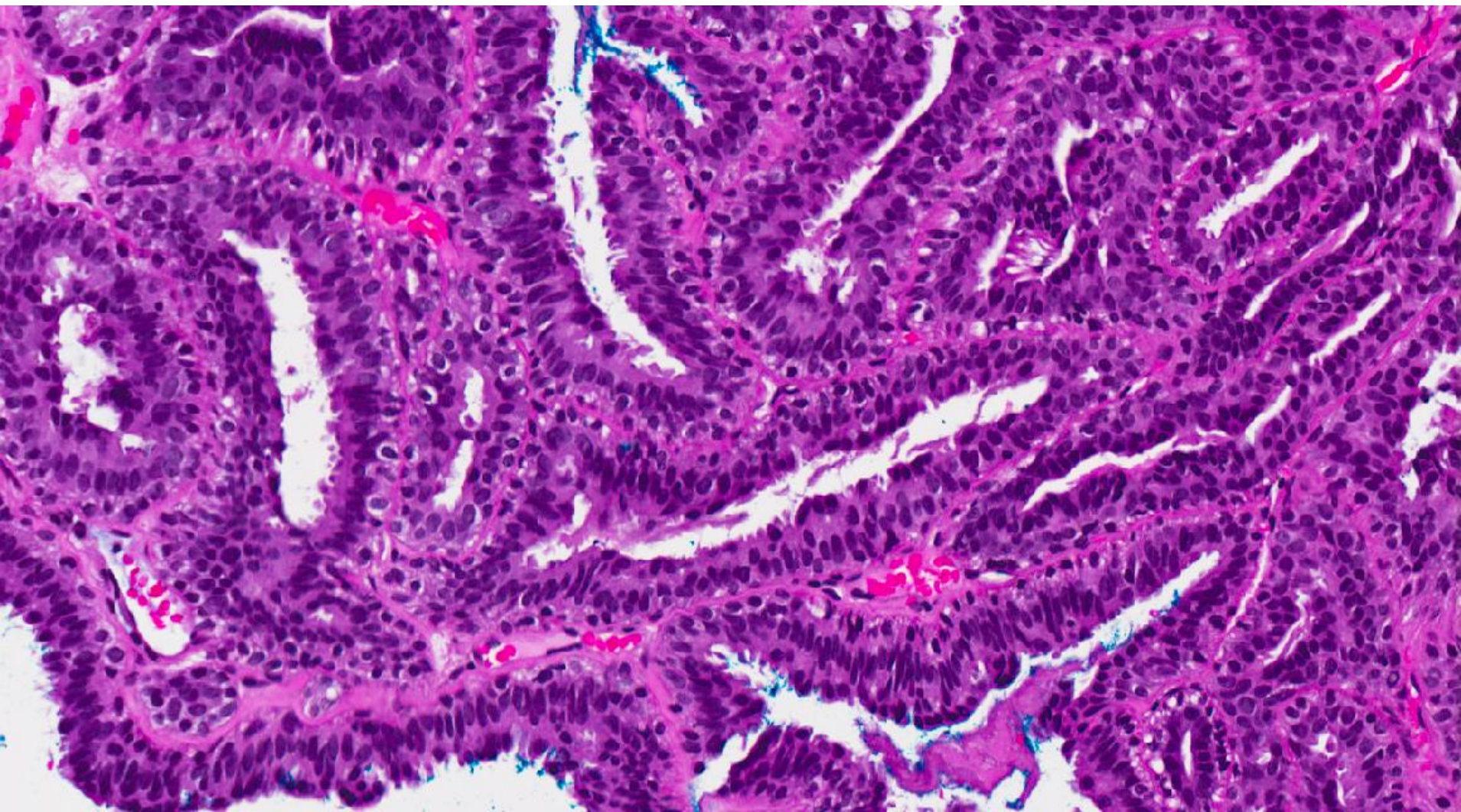
A 14G guided needle biopsy was performed under ultrasound guidance.

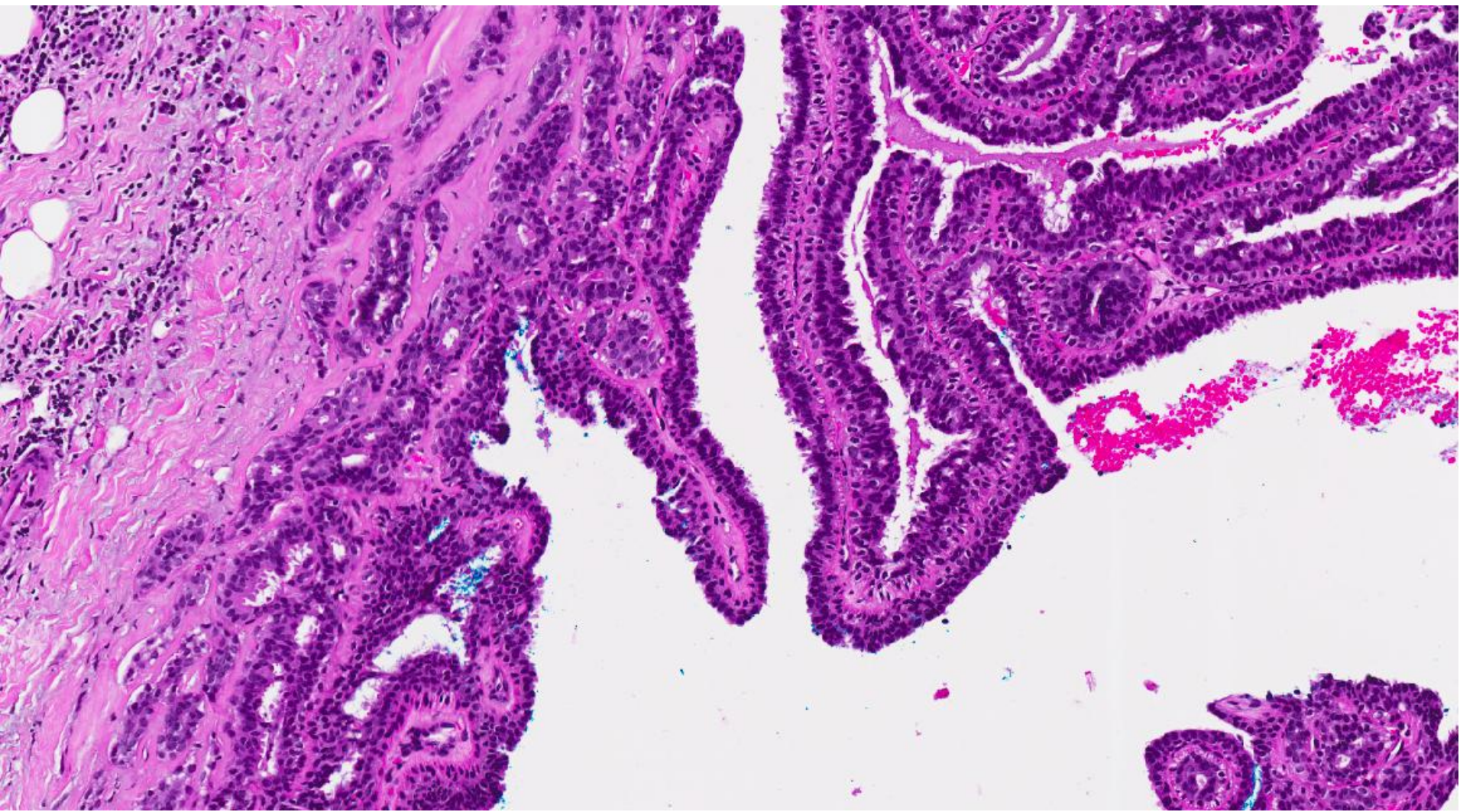












Diagnosis

- Parts of an intraductal papilloma.

- Subsequent mammotome excision biopsy showed intraductal papilloma.