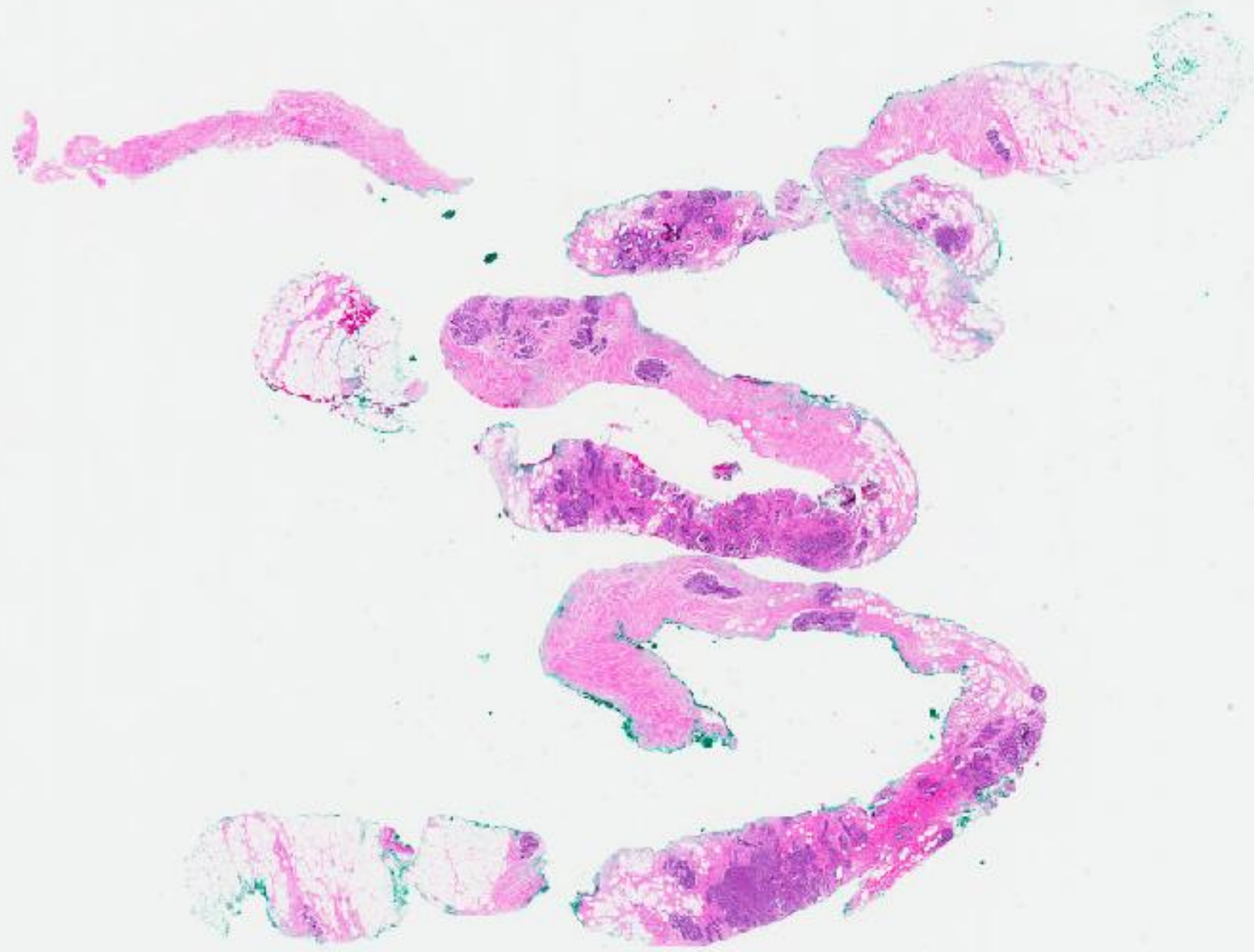
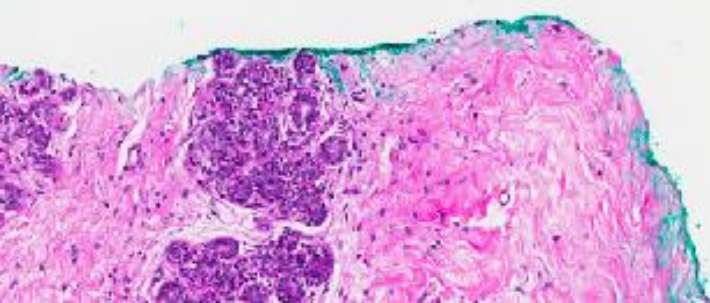
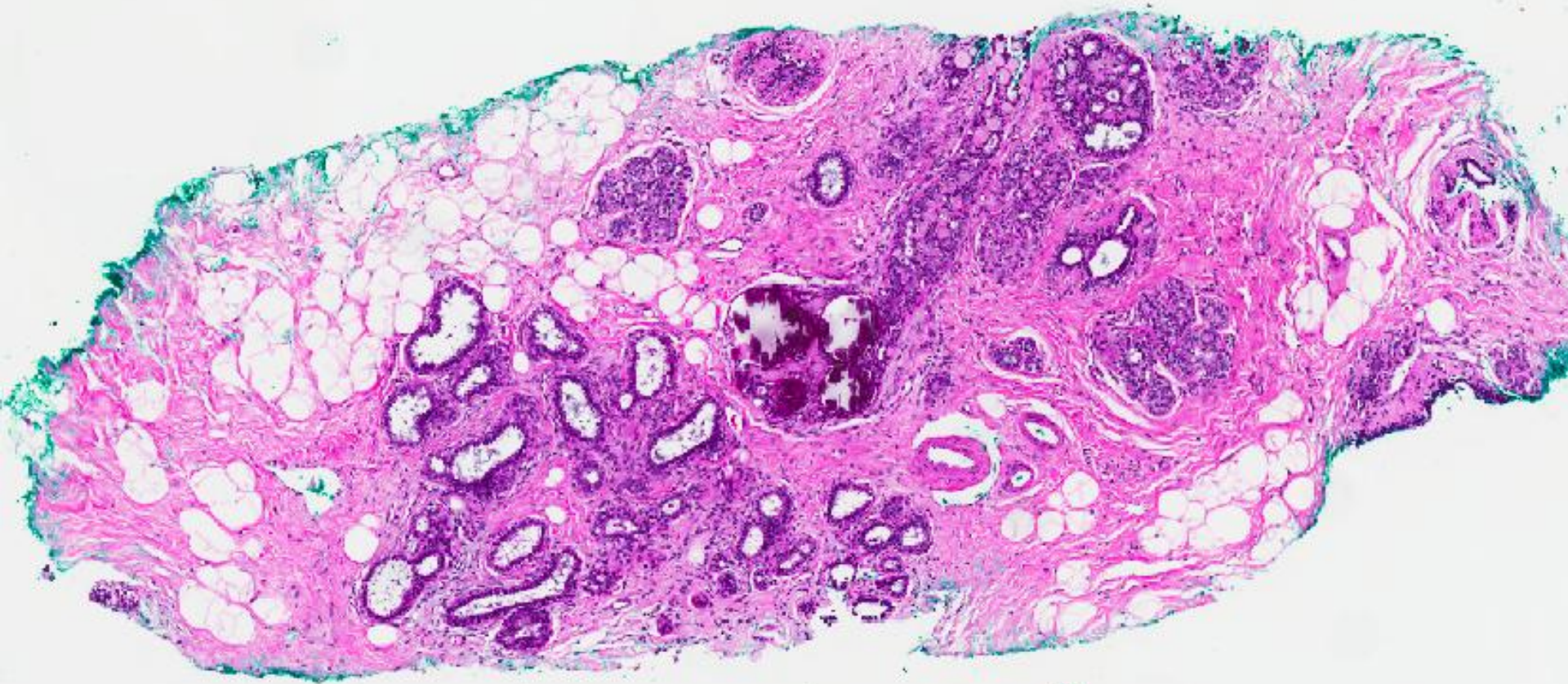


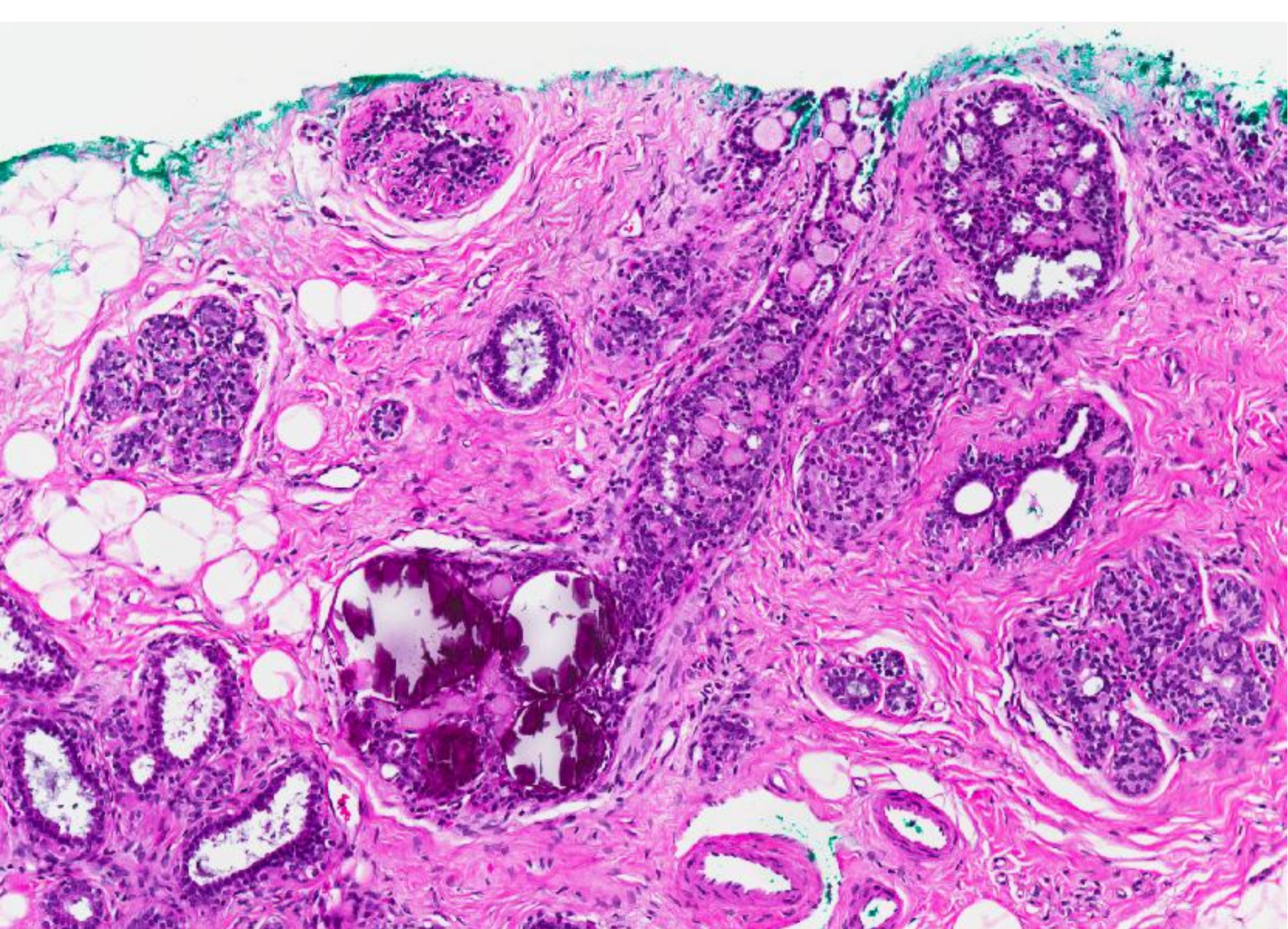
CASE 22

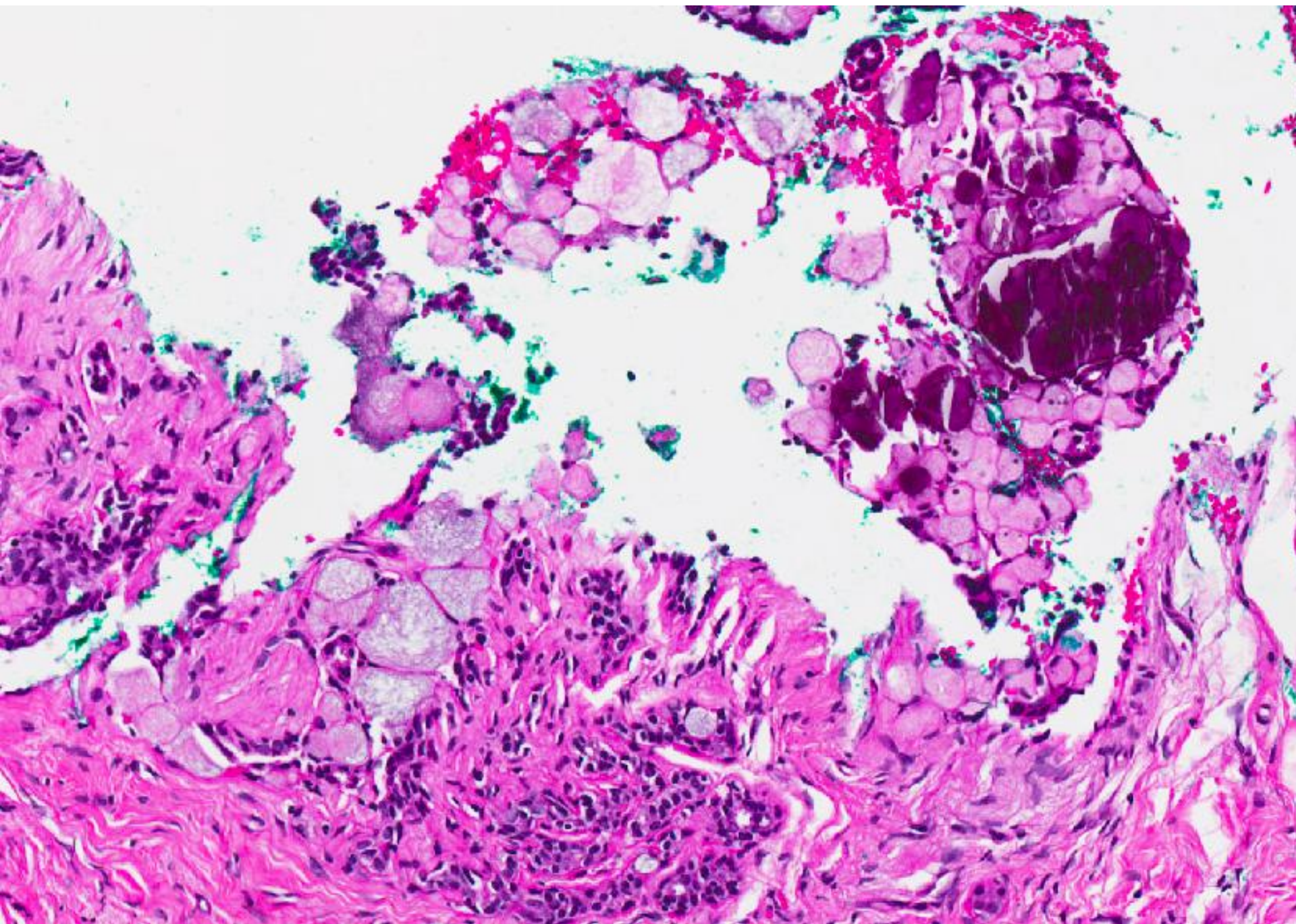
50 year old Malay lady was discovered to have bilateral indeterminate calcifications on screening mammography. Stereotactic trucut biopsies of both right and left breast microcalcifications were performed.

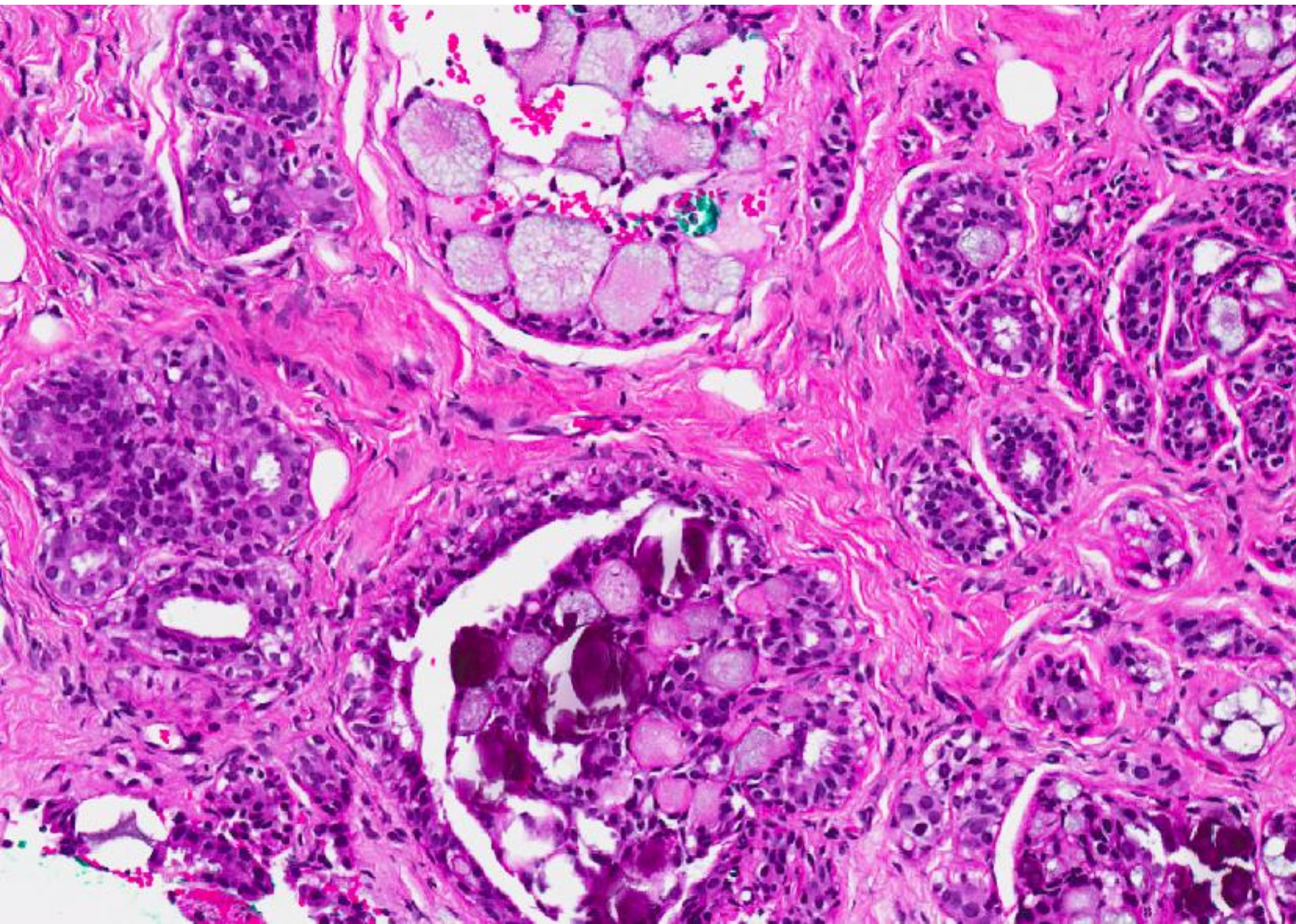
Right breast

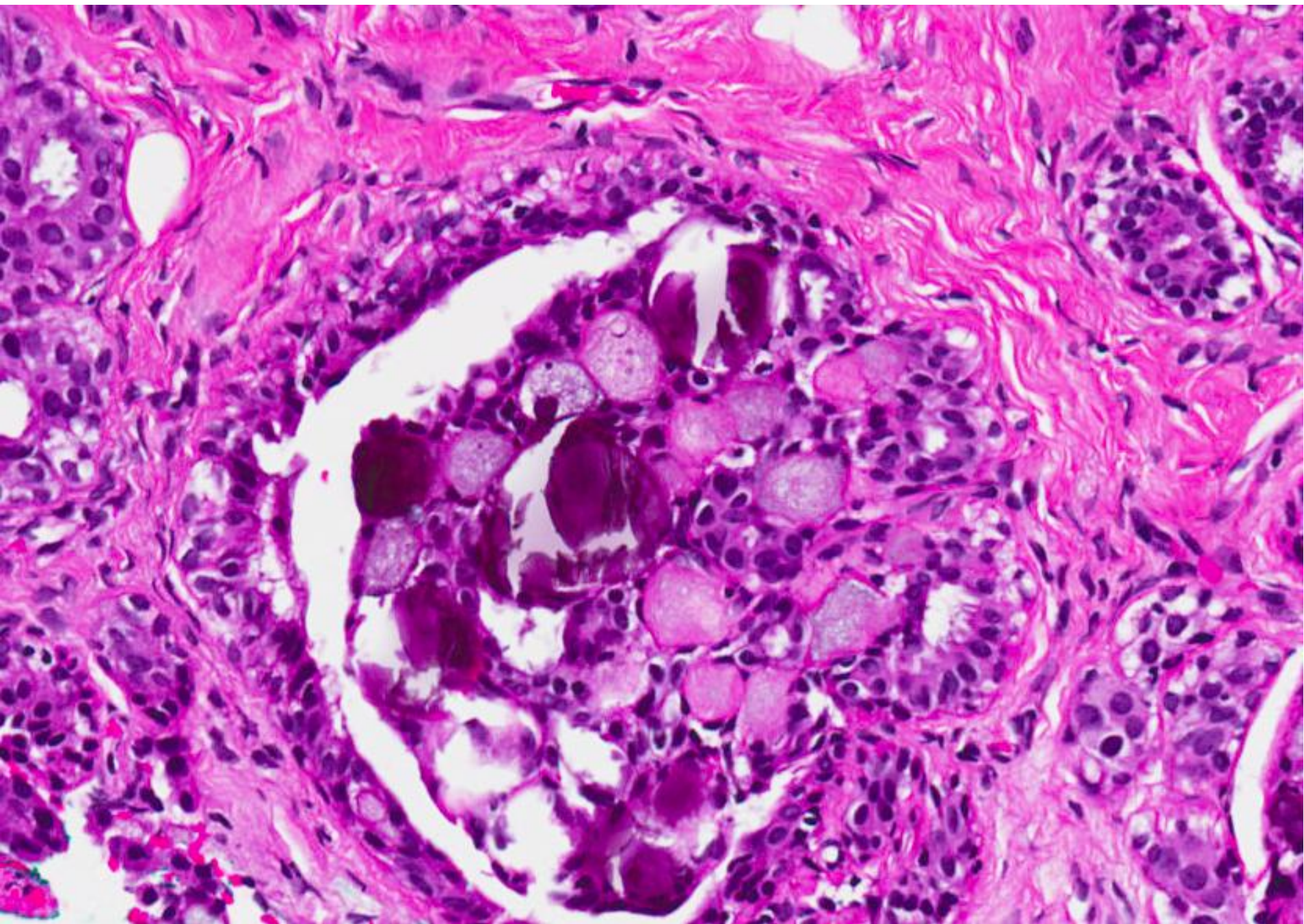




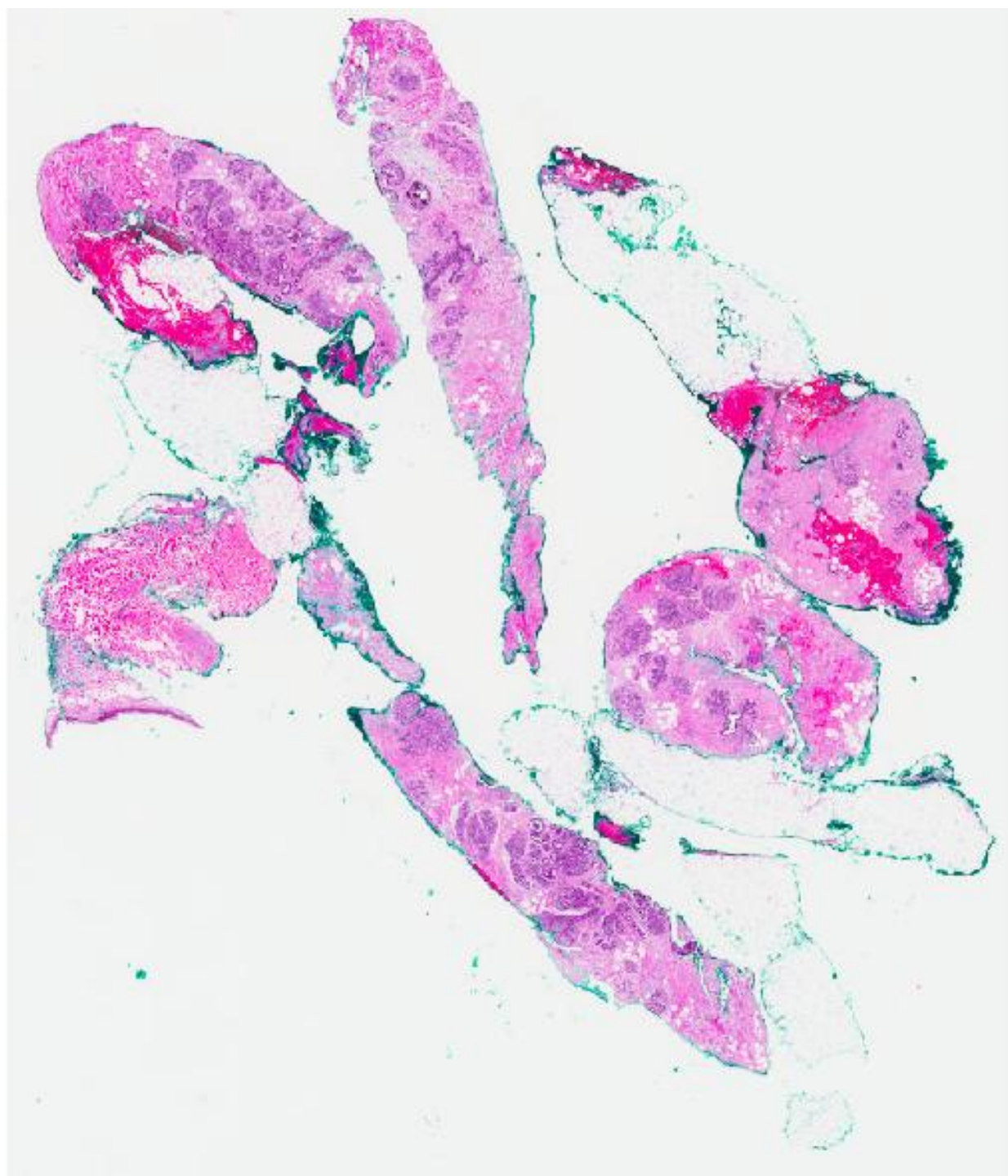


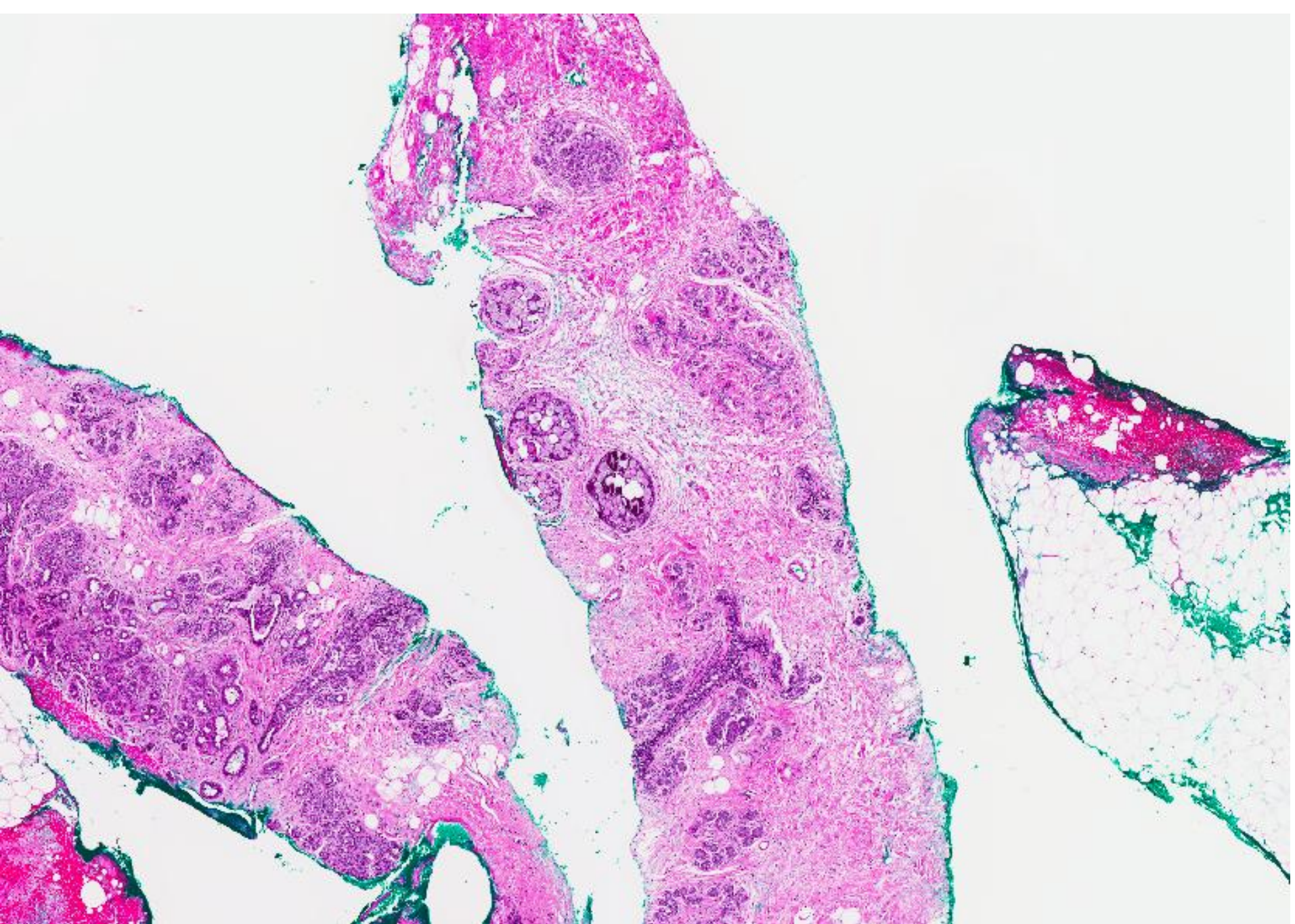


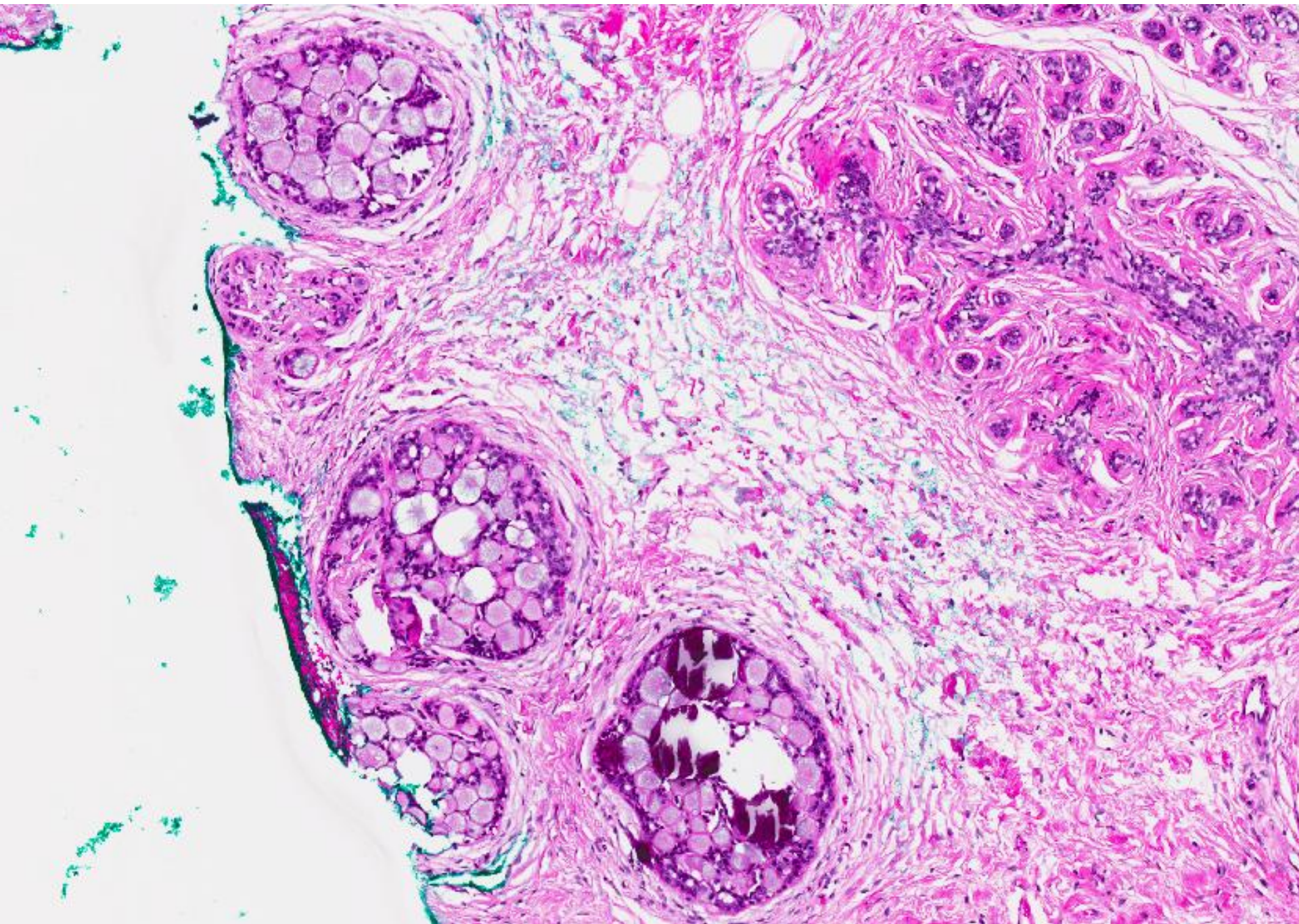


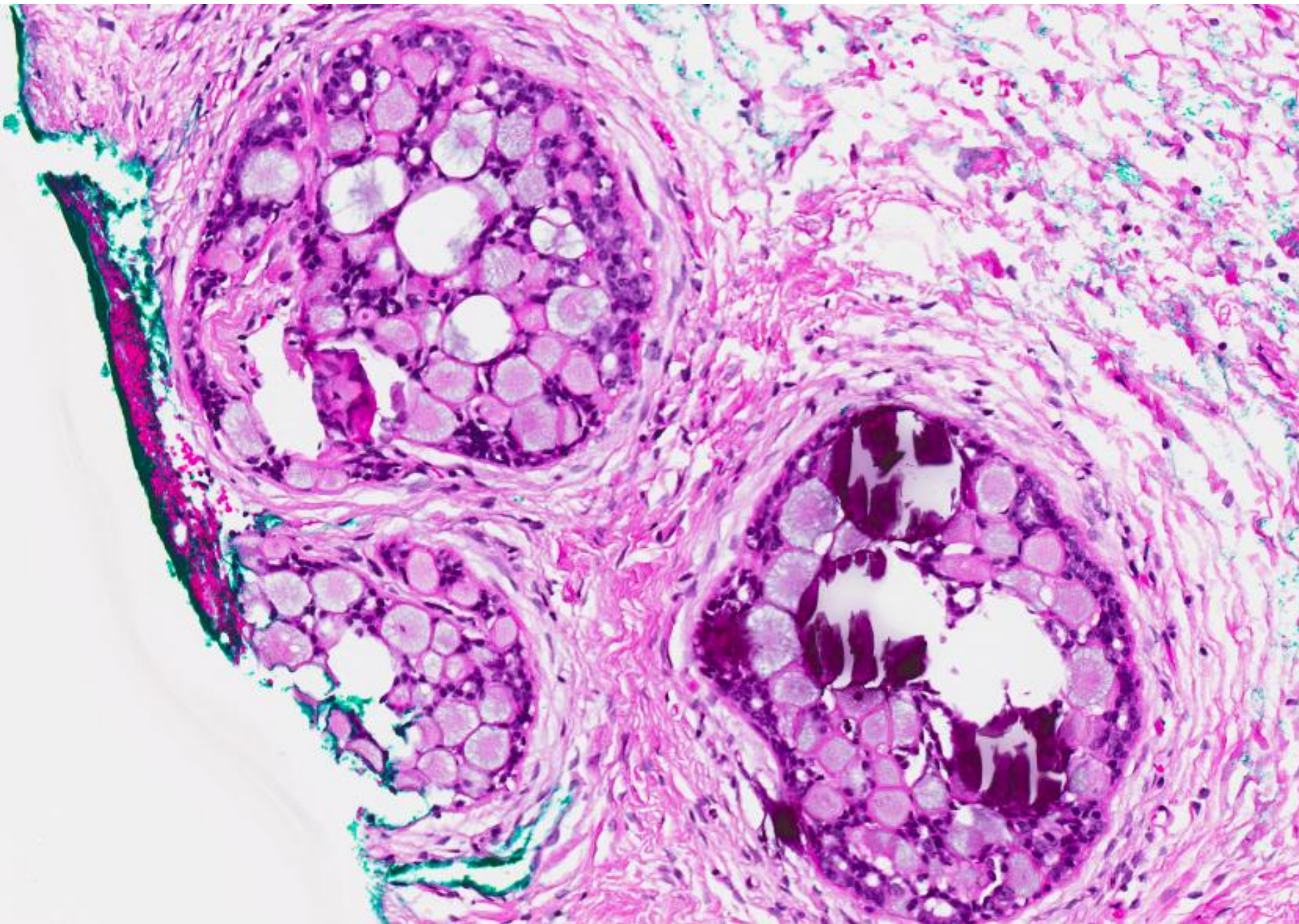


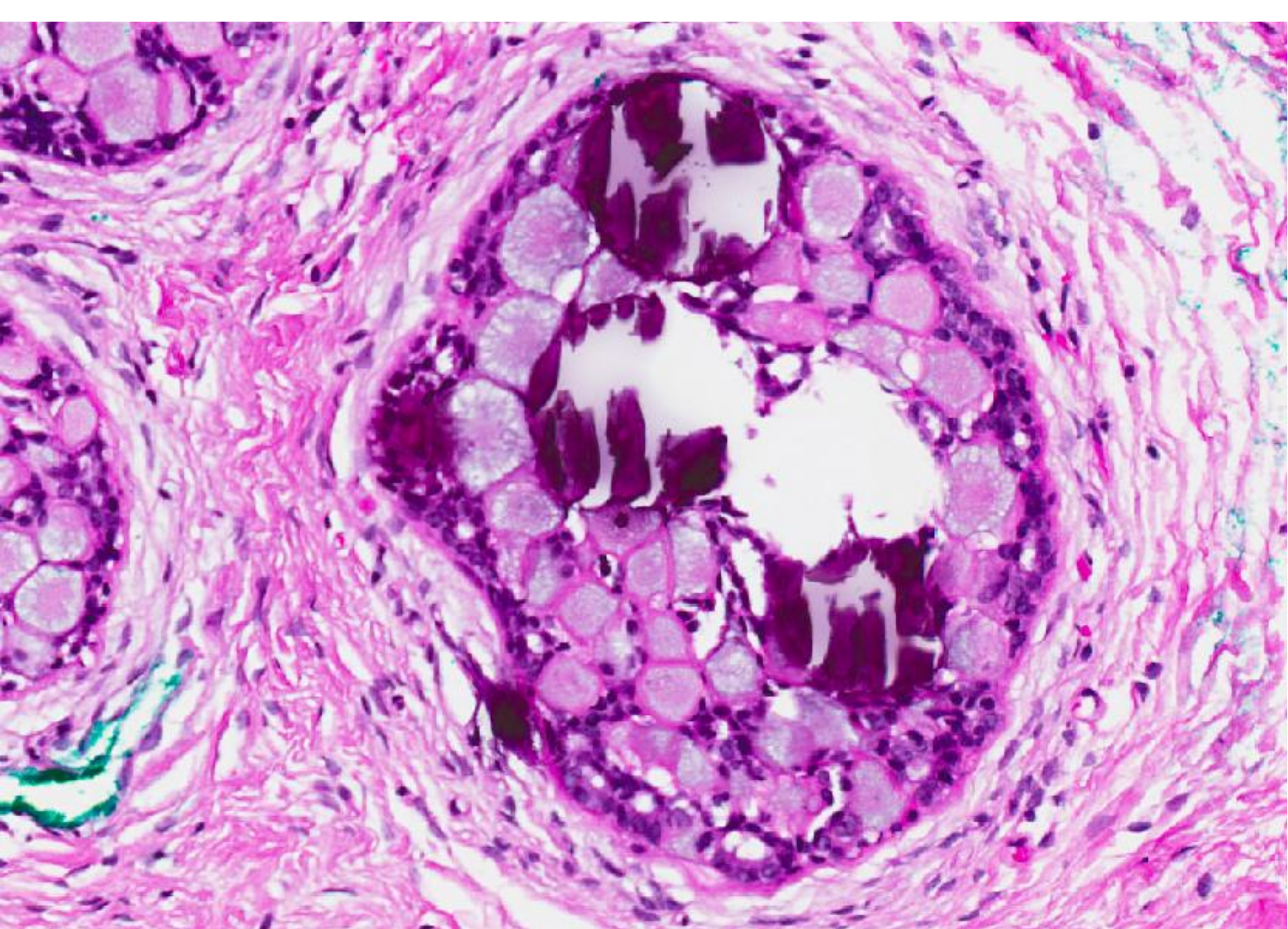
Left breast











Diagnosis

- Collagenous spherulosis.

Differential diagnosis

- Cribriform DCIS.
- Invasive cribriform carcinoma.
- Adenoid cystic carcinoma.

Immunohistochemical comparison of collagenous spherulosis, cribriform DCIS, invasive cribriform carcinoma, adenoid cystic carcinoma.

	p63	S100	SMA	CD117	ER	CK14
Collagenous spherulosis	+	+	+	-	+(patchy)	+
Cribriform DCIS	+(MEC)	+(MEC)	+(MEC)	-	+(diffuse)	+(MEC)
Invasive cribriform carcinoma	-	-	-	-	+(diffuse)	-
Adenoid cystic carcinoma	+(diffuse)	+/-	+/-	+	-	+(diffuse)

MEC = myoepithelial cells