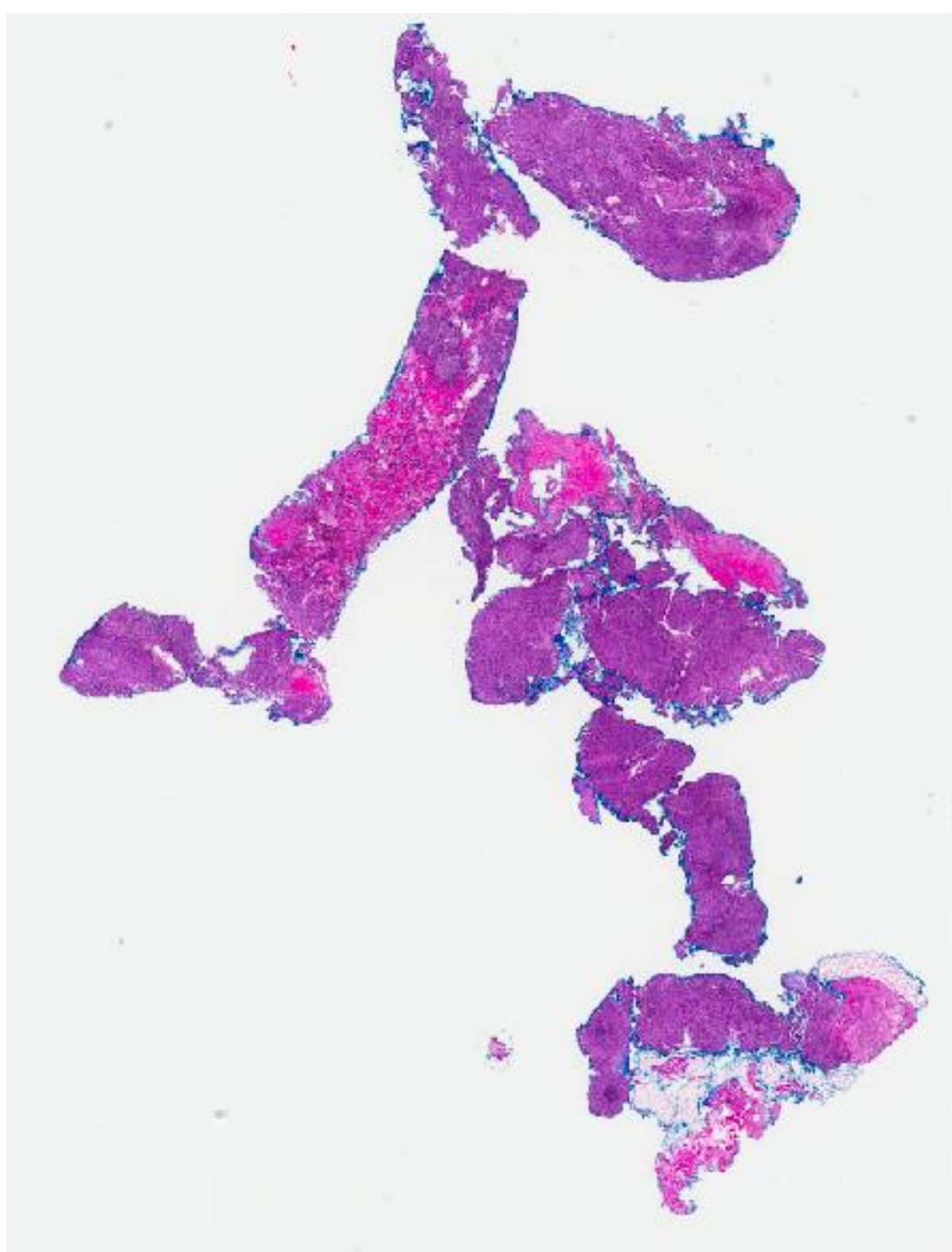
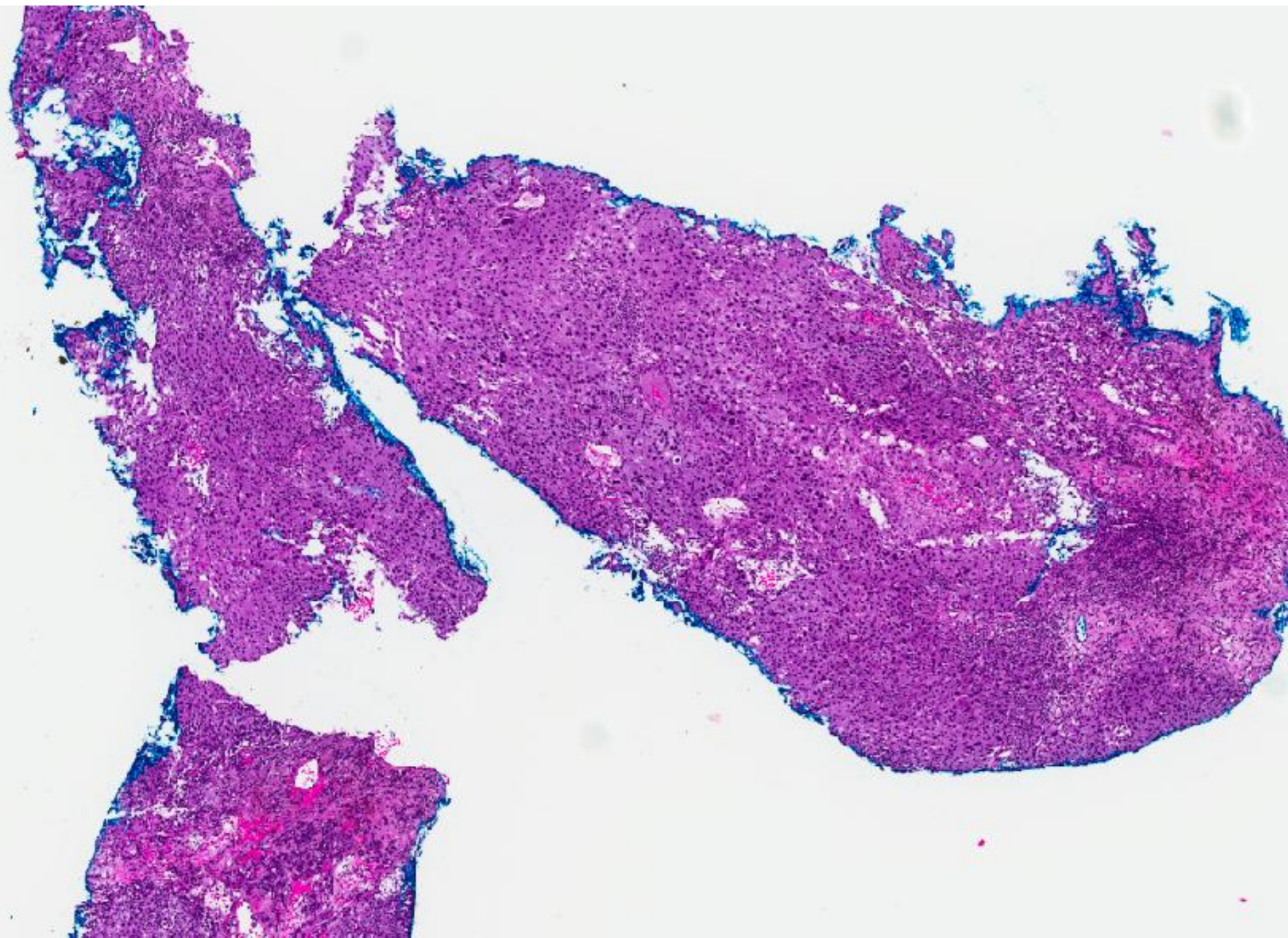
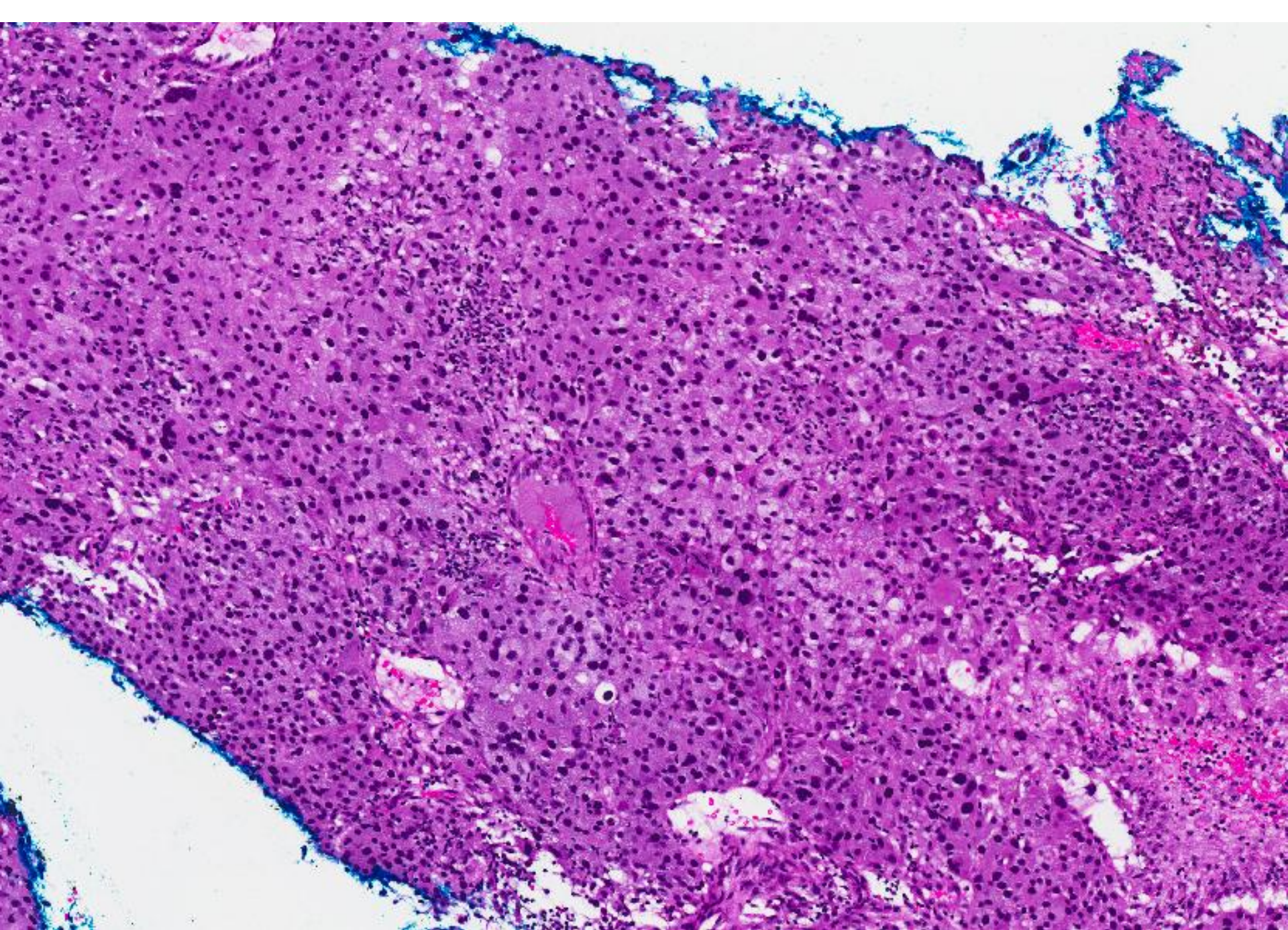


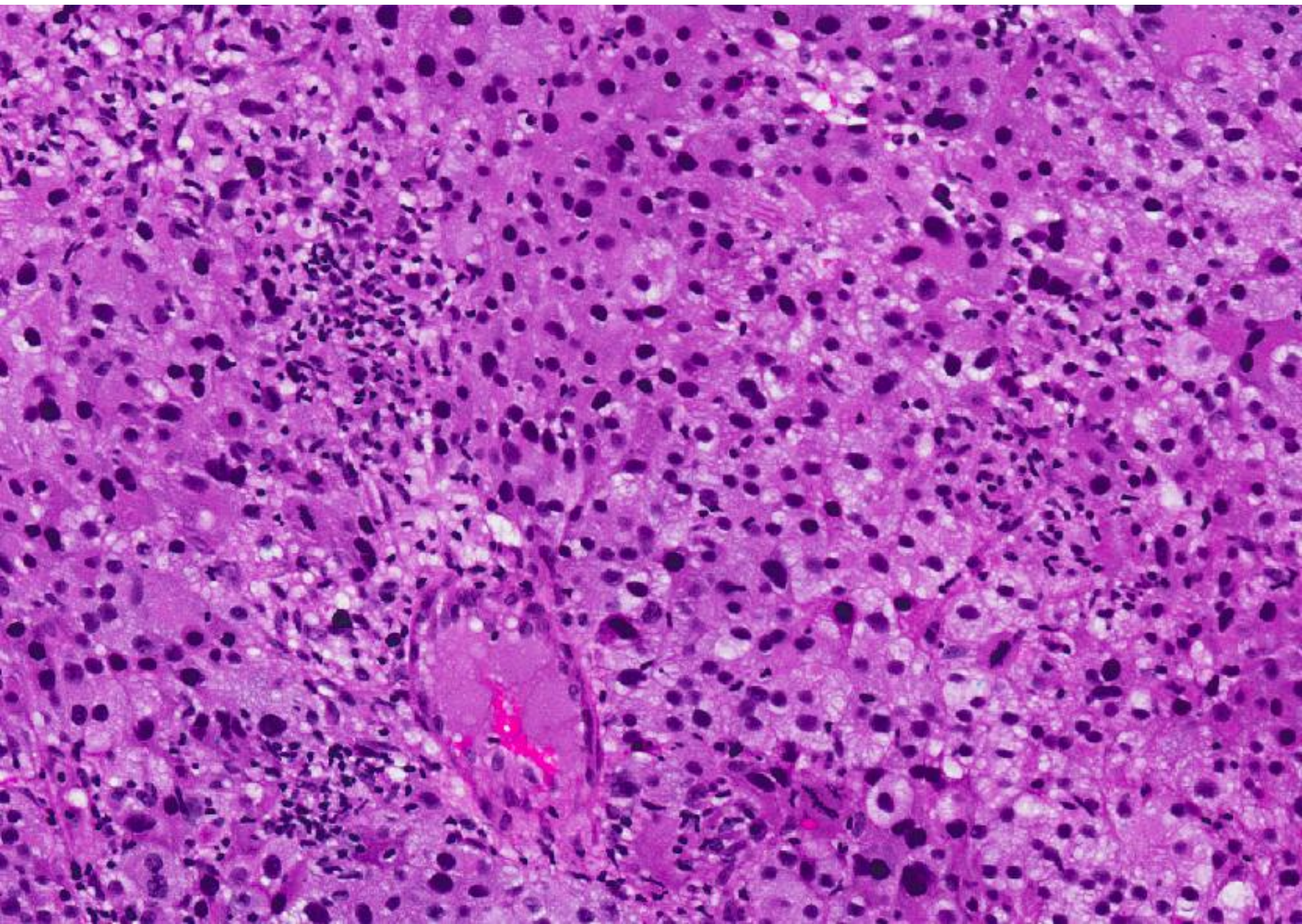
CASE 16

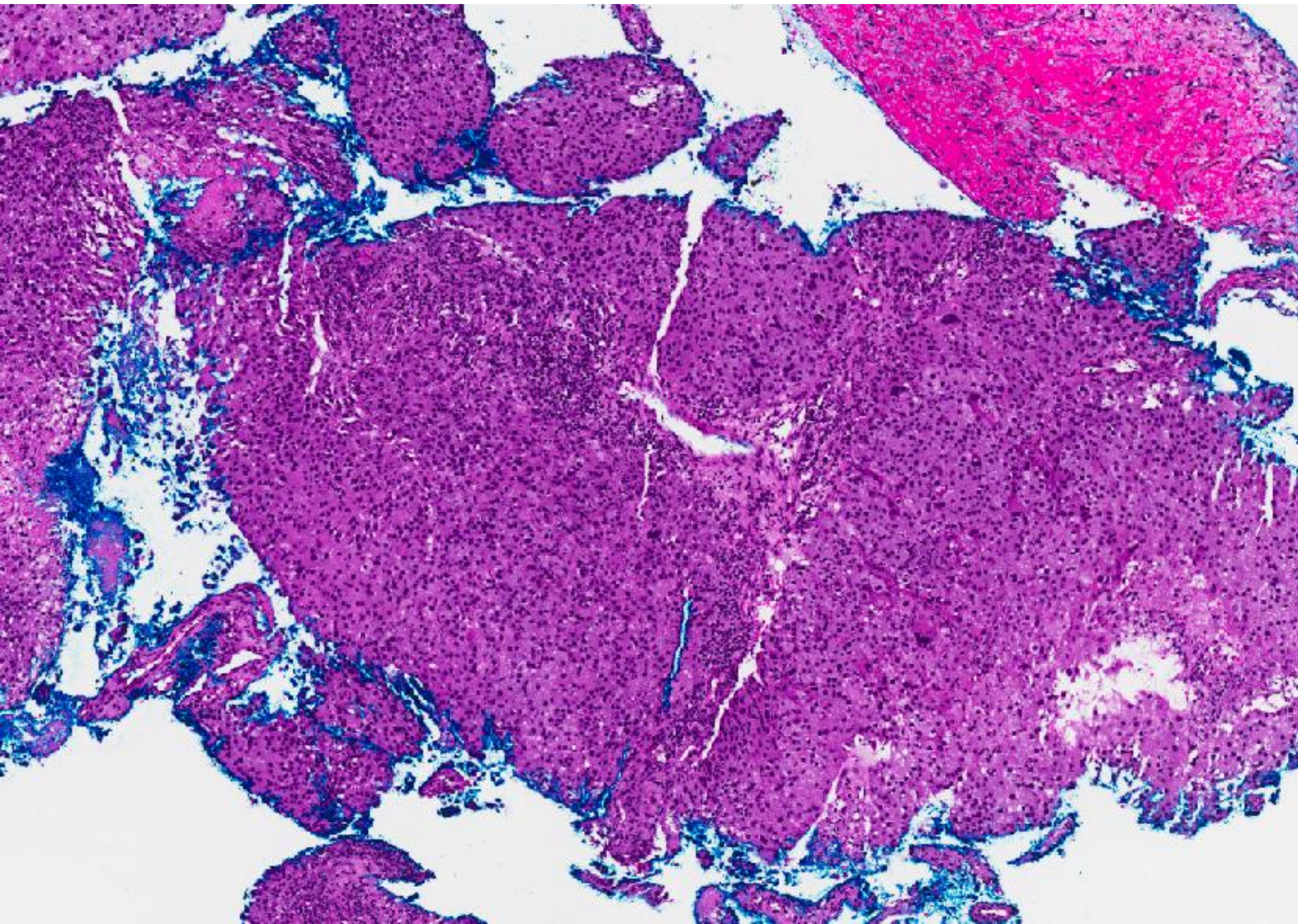
75 year old Chinese lady presented with a palpable right breast lump 3.3 cm in size, located at the 9 o'clock position. A trucut biopsy was performed.

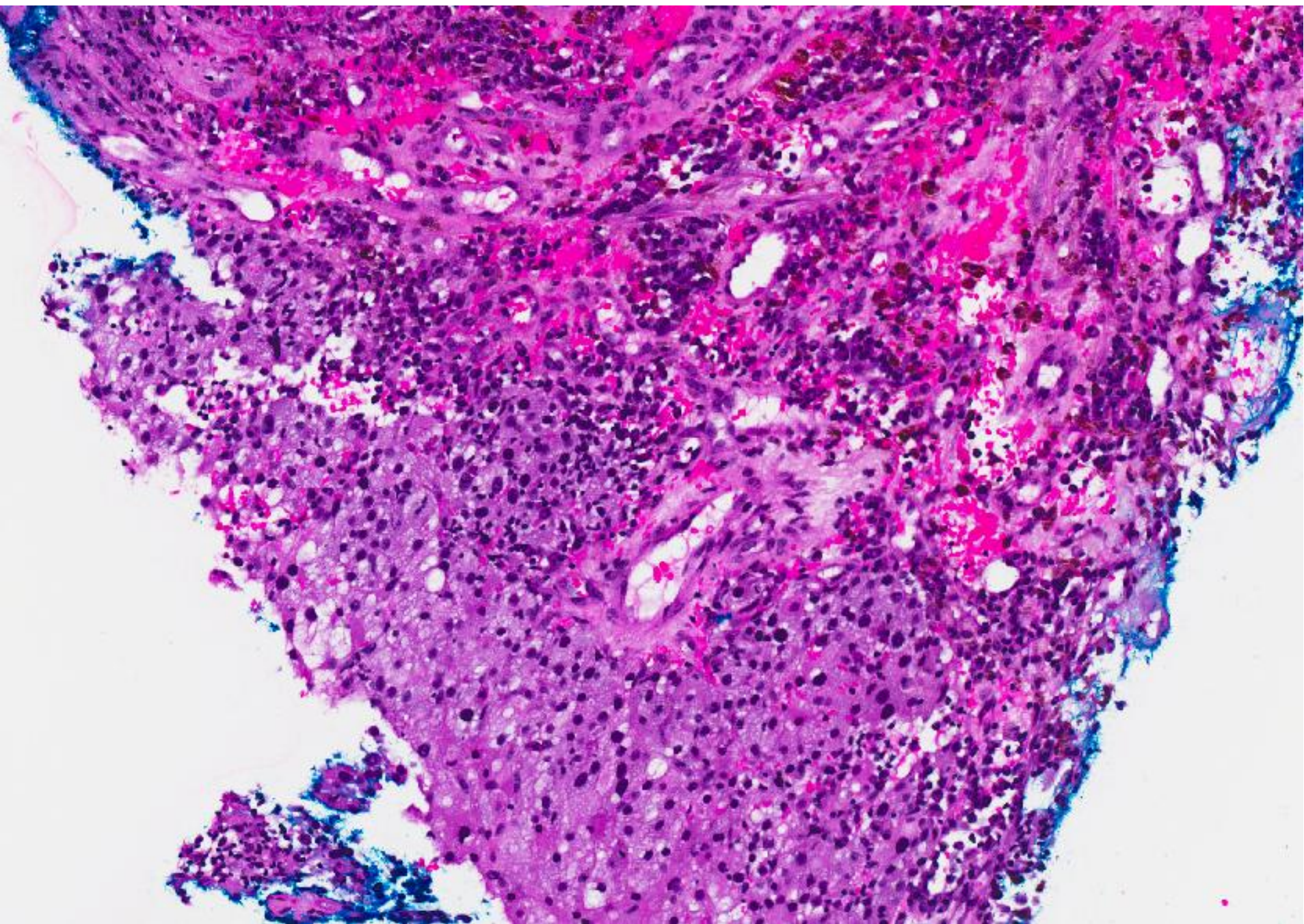


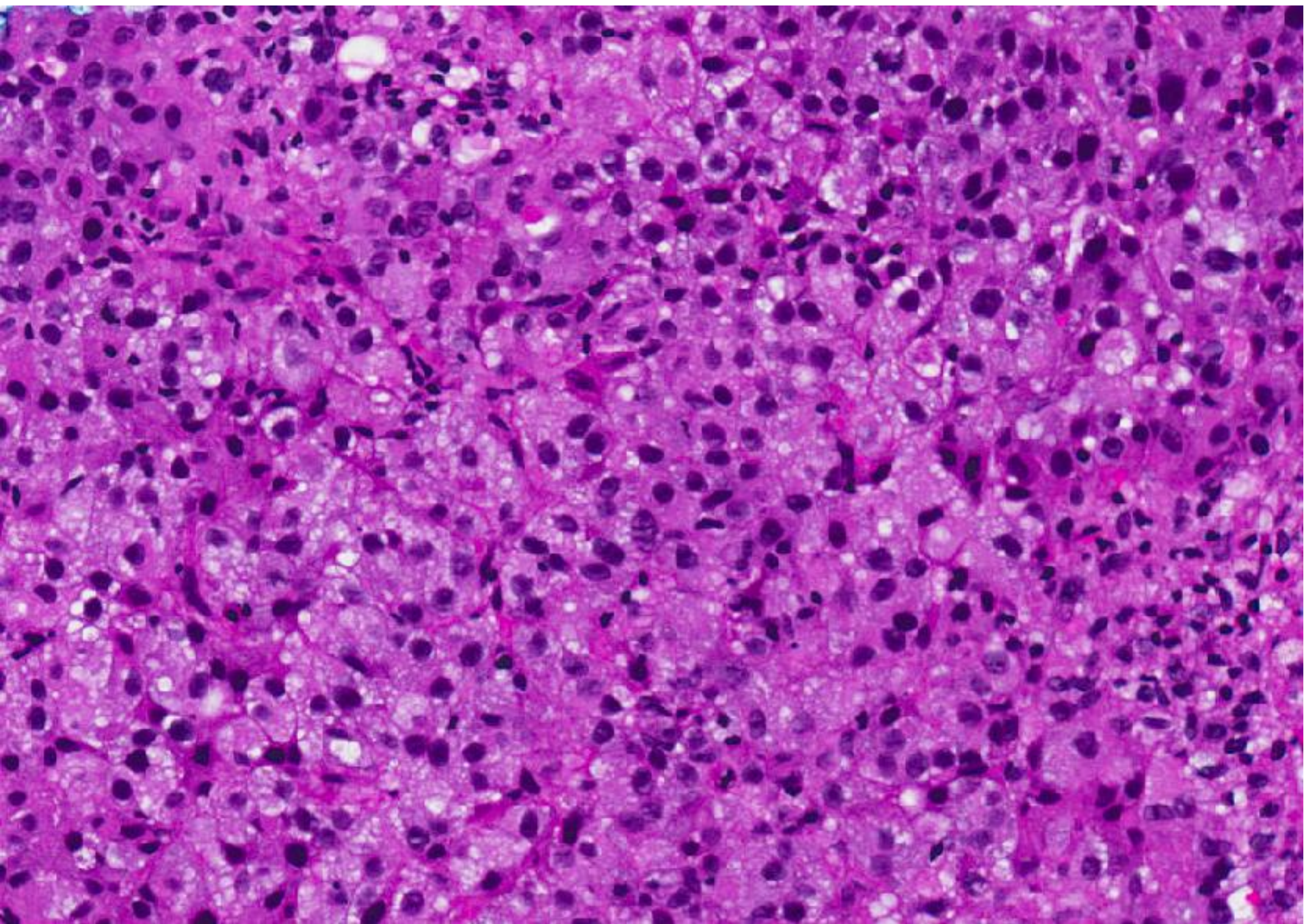


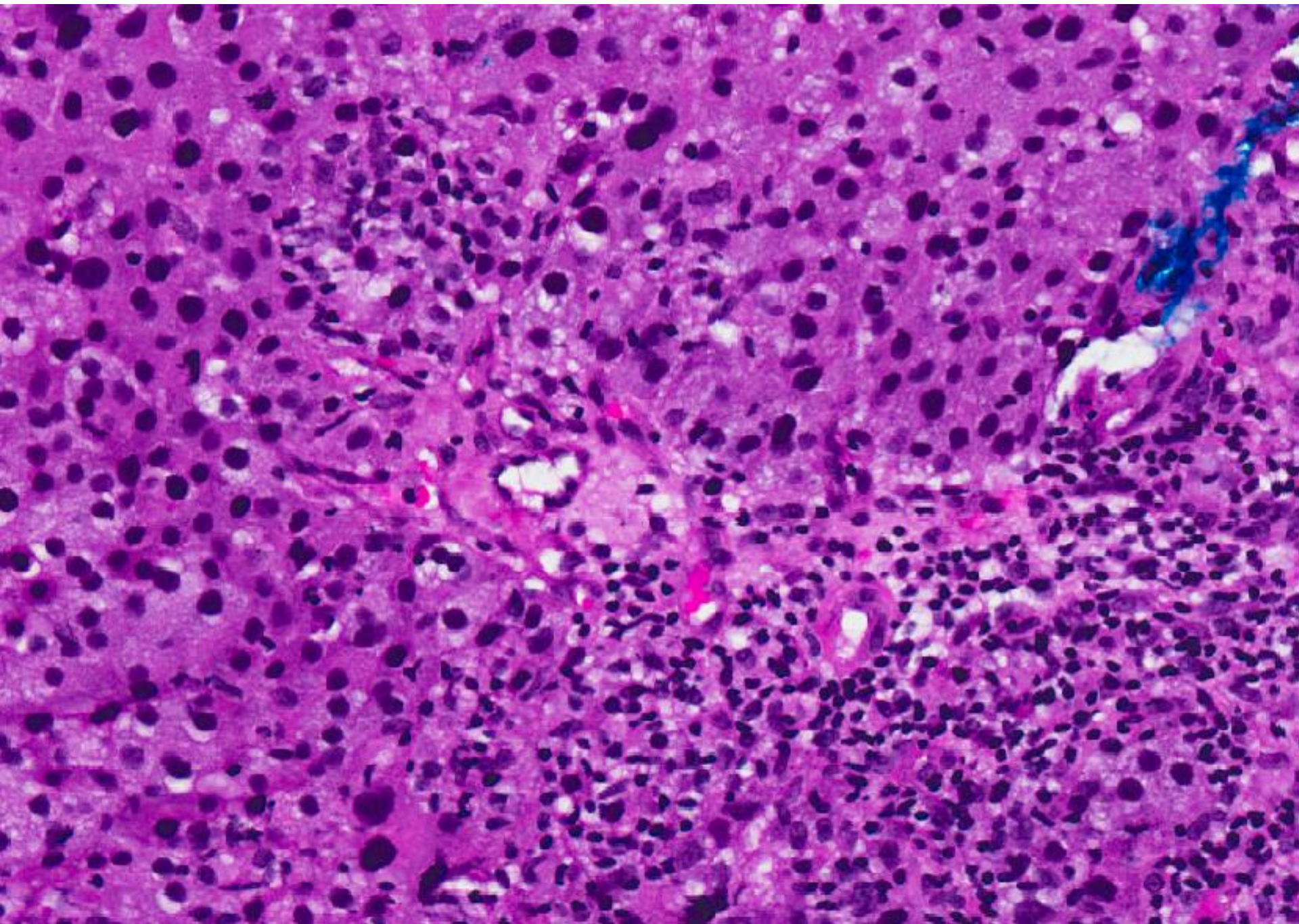












Diagnosis

- Malignant tumour with unusual histology.
- Subsequent excision was an infiltrative ductal carcinoma, medullary-like, ER -, PR -, cerbB2 positive (3+)

Breast carcinoma with medullary features

- Includes:
 - Medullary carcinoma.
 - Atypical medullary carcinoma.
 - Subset of invasive ductal carcinoma, NOS.
- Histology:
 - Circumscribed pushing borders.
 - Syncytial cell growth.
 - High nuclear grade and mitotic activity.
 - Prominent lymphoid infiltration.
- Classical medullary carcinoma is vanishingly rare.
- Often basal-like, may have BRCA1 familial link.