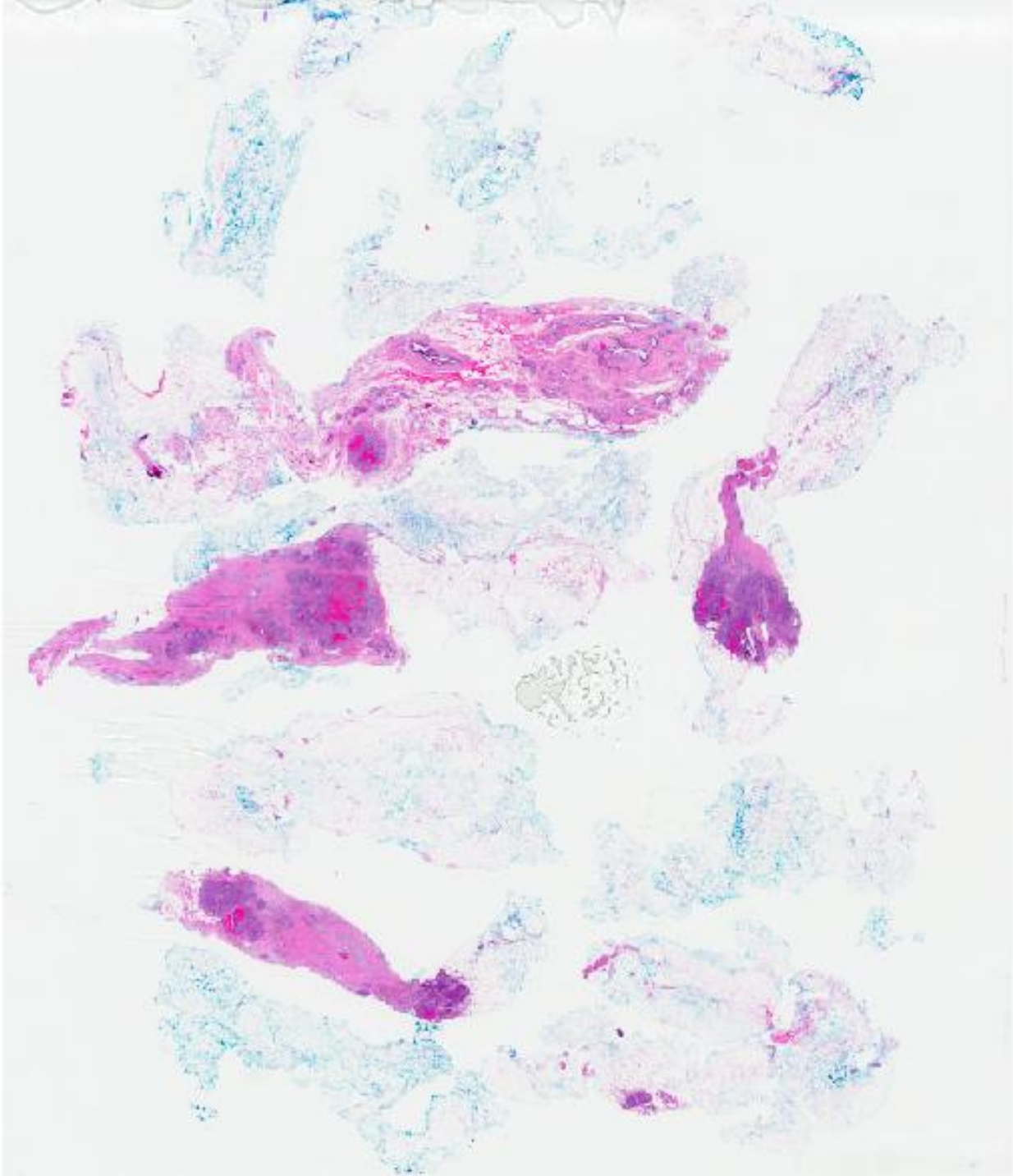
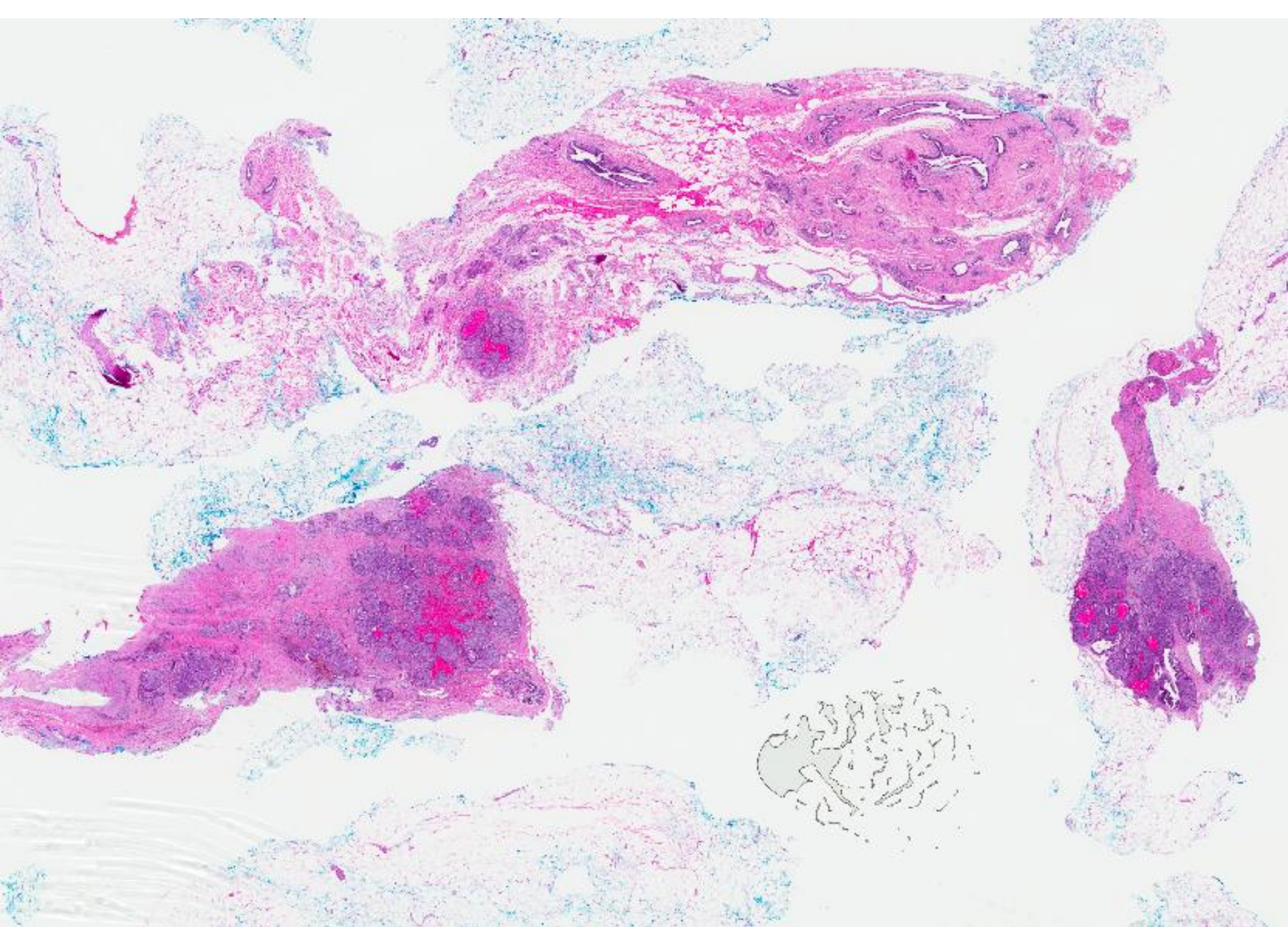


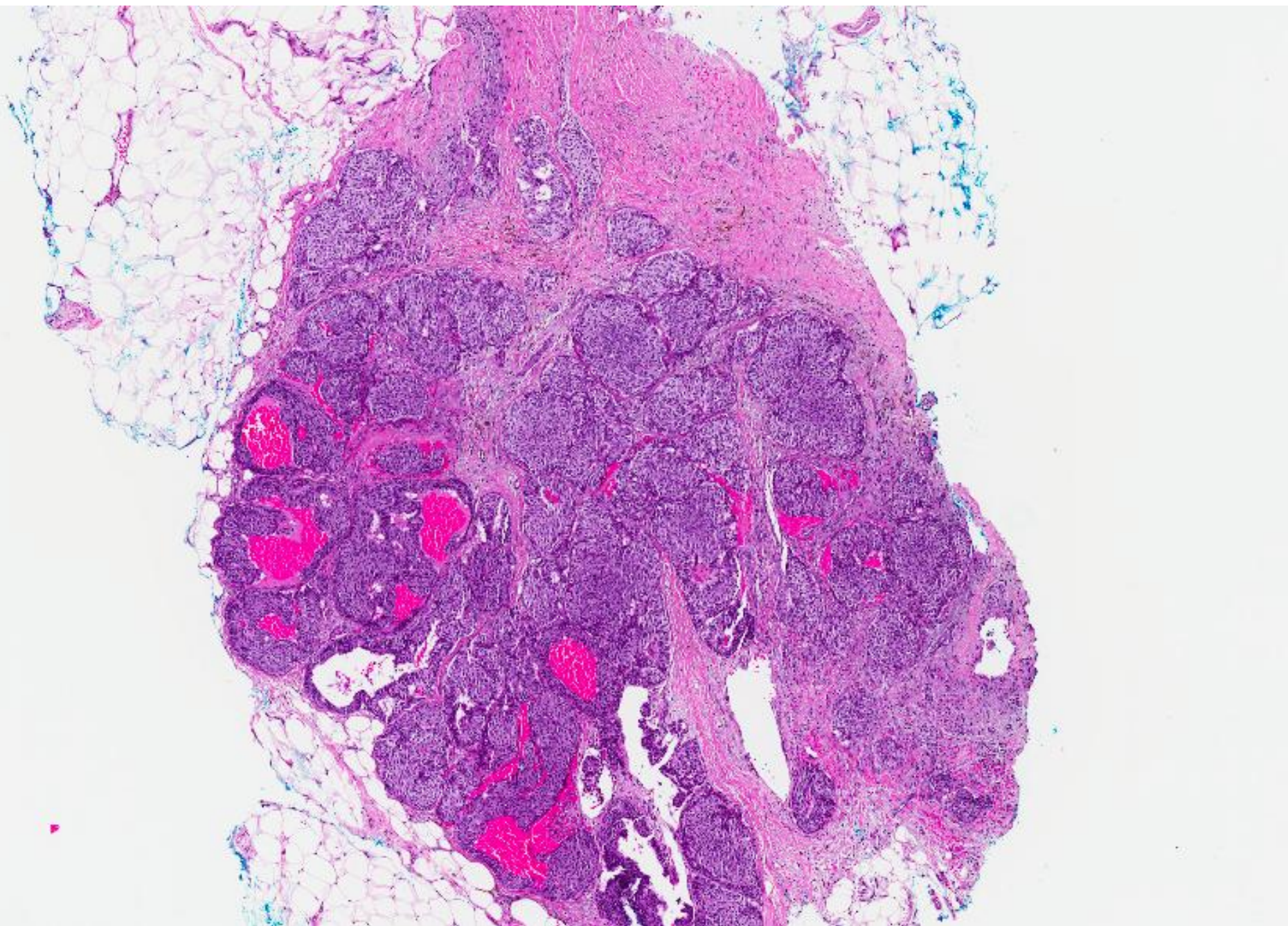
CASE 15

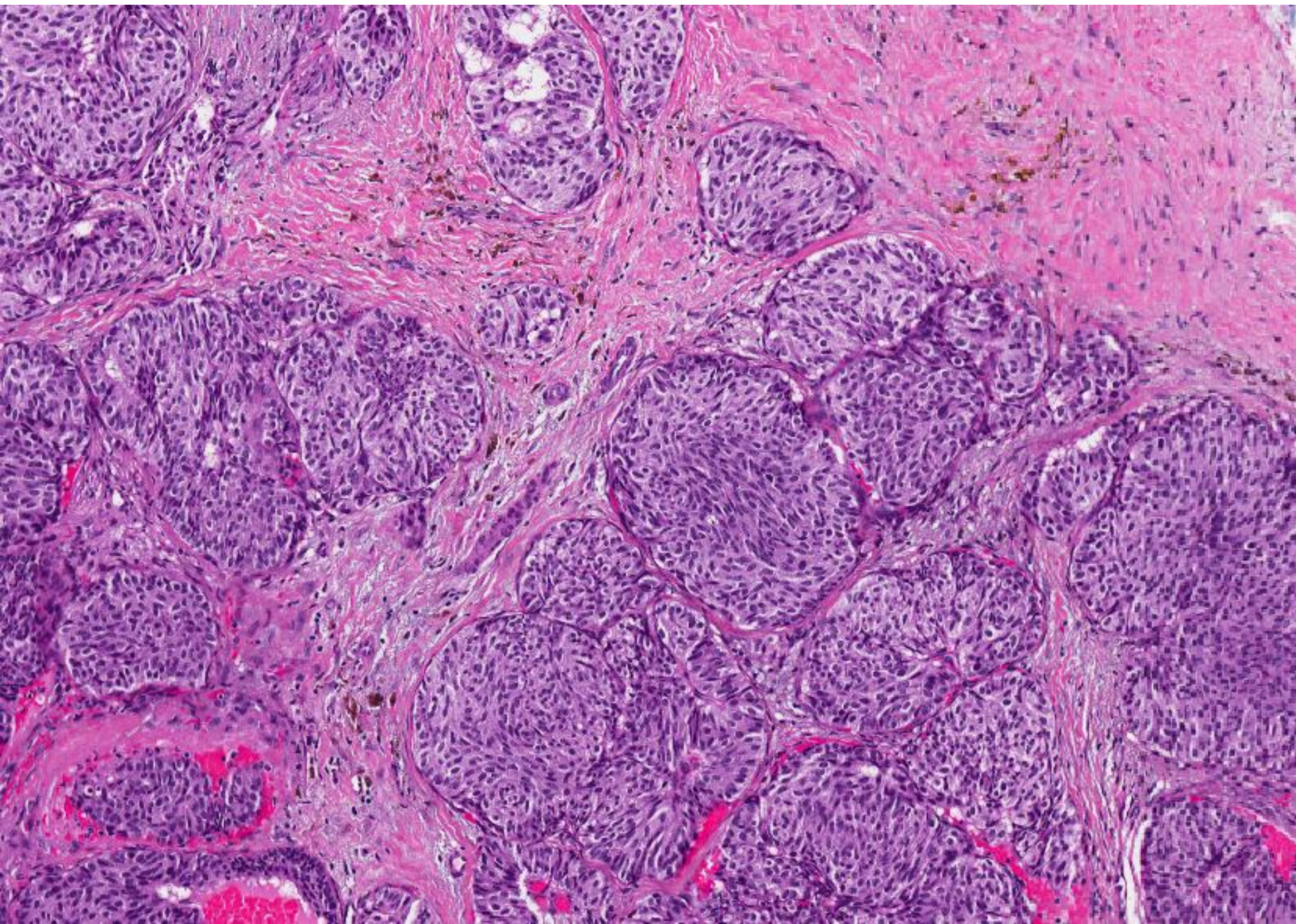
62 year old Indonesian lady presented with a right breast lump.

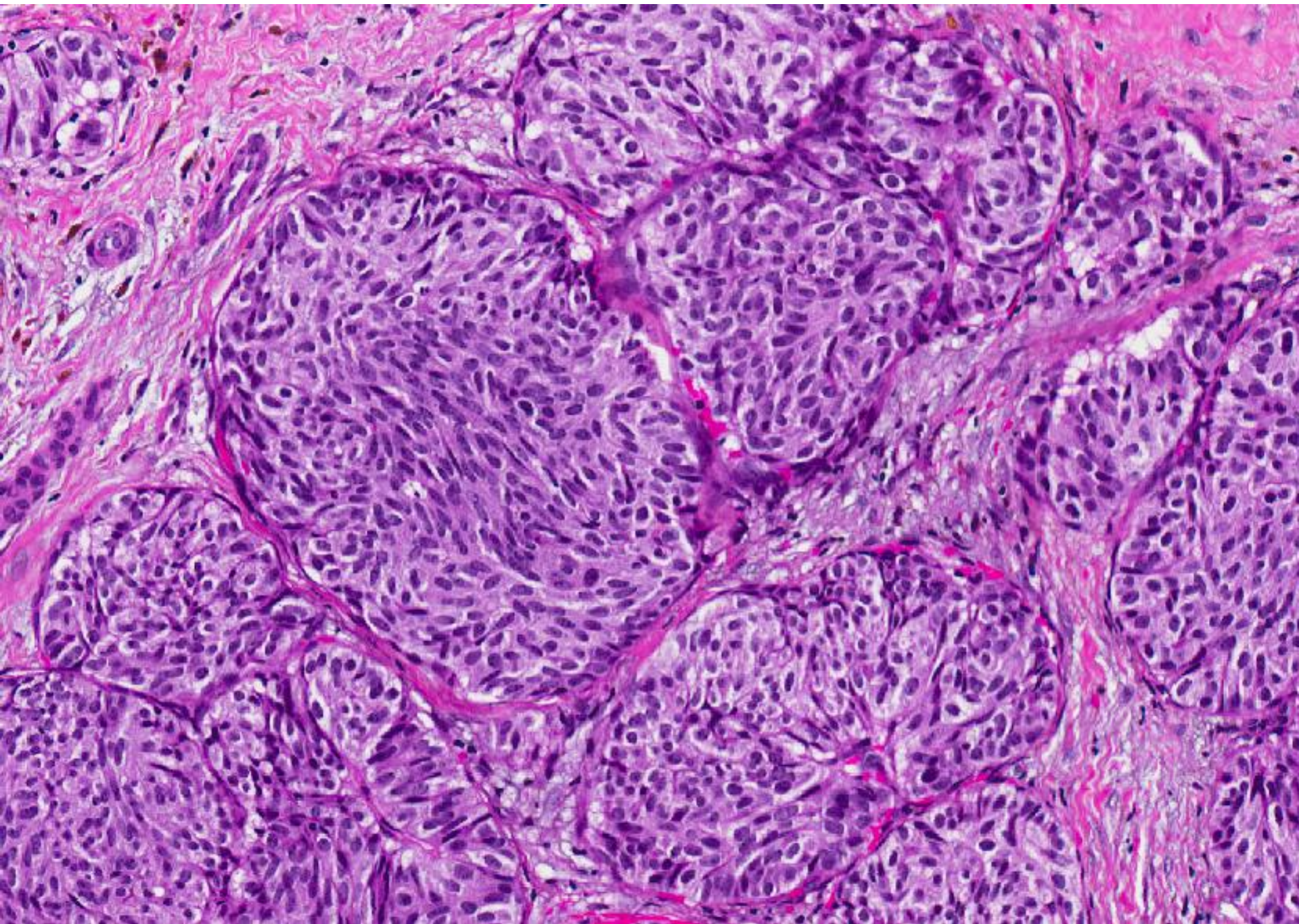
An ultrasound guided mammotome core biopsy was performed.

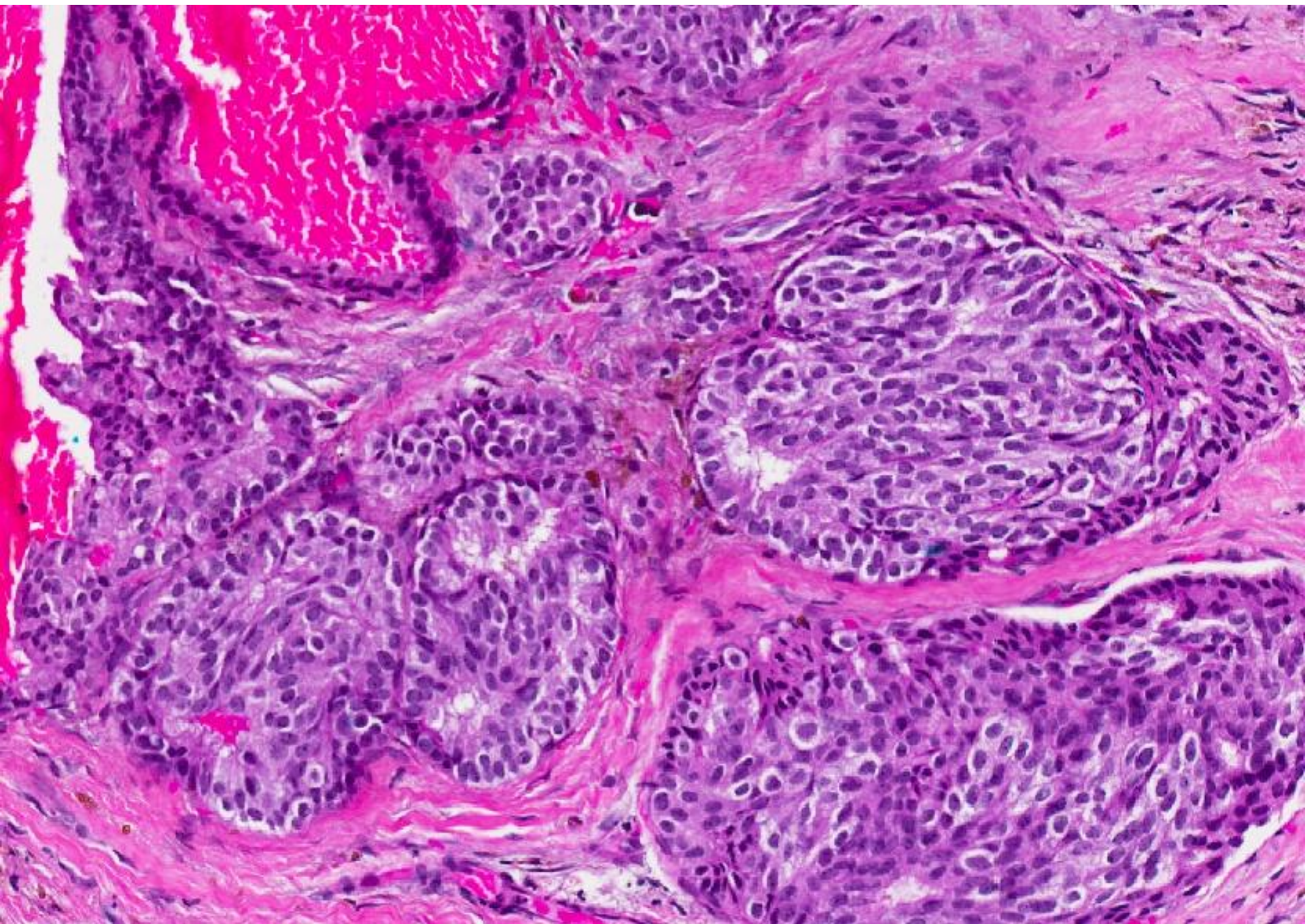


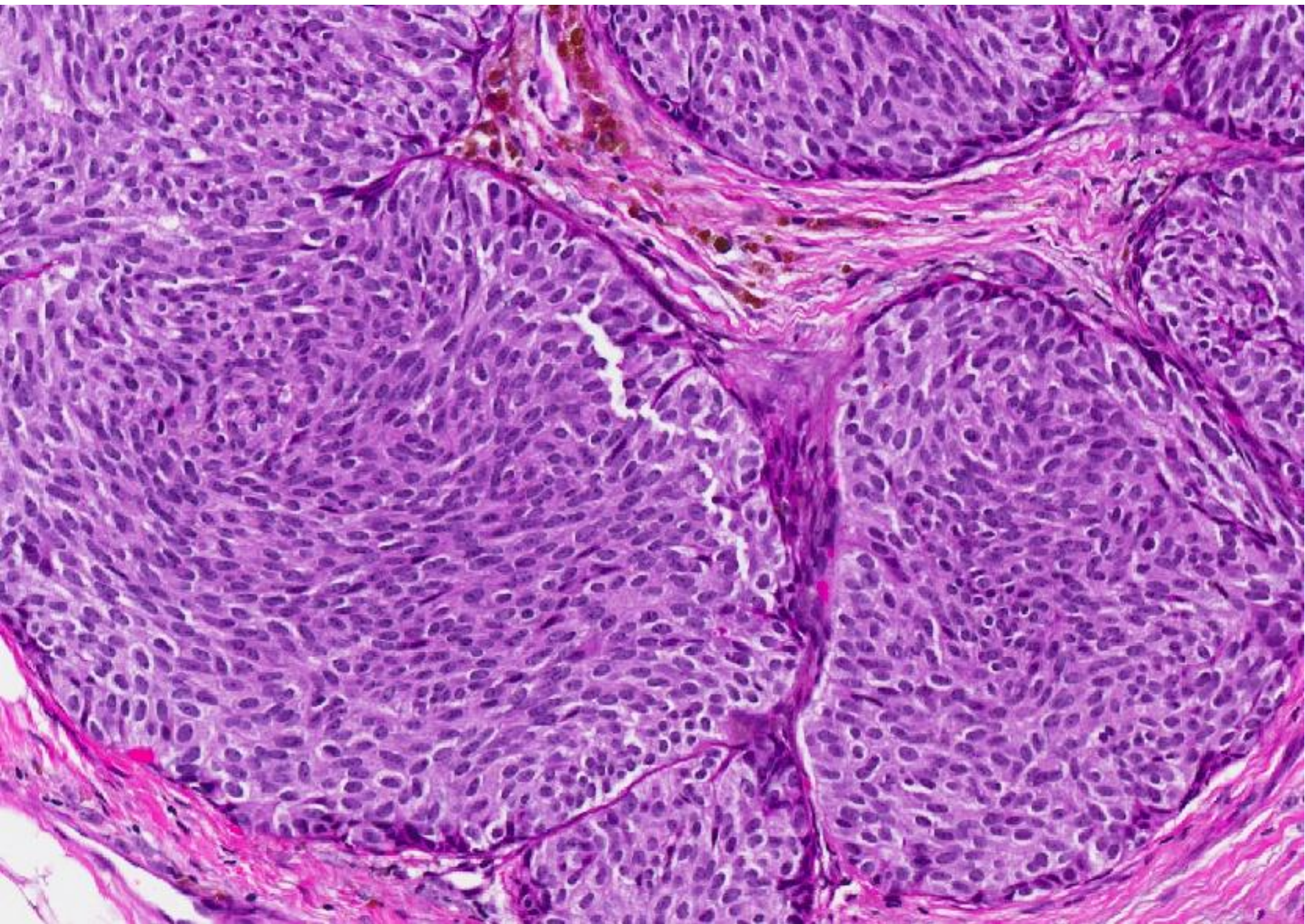


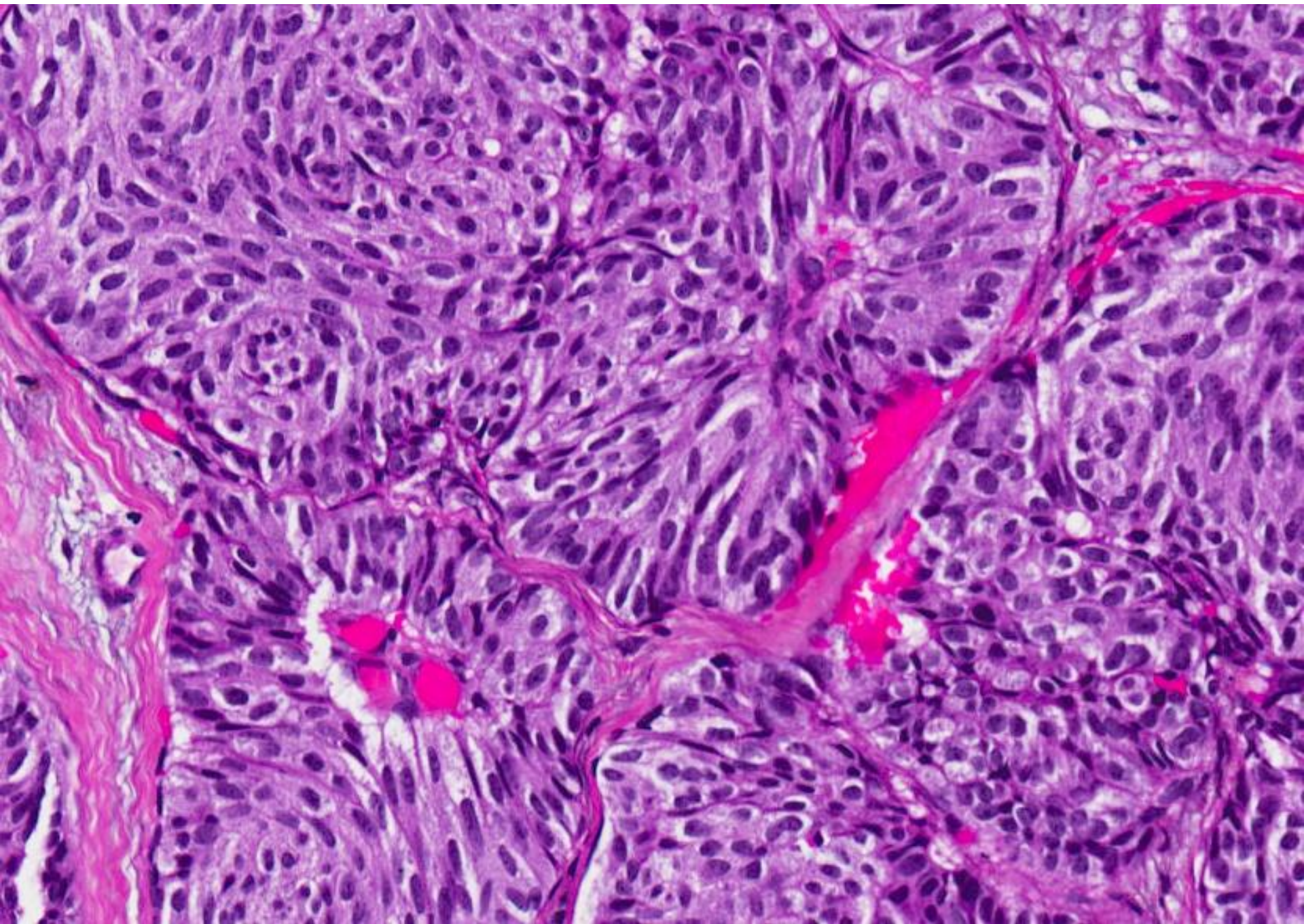


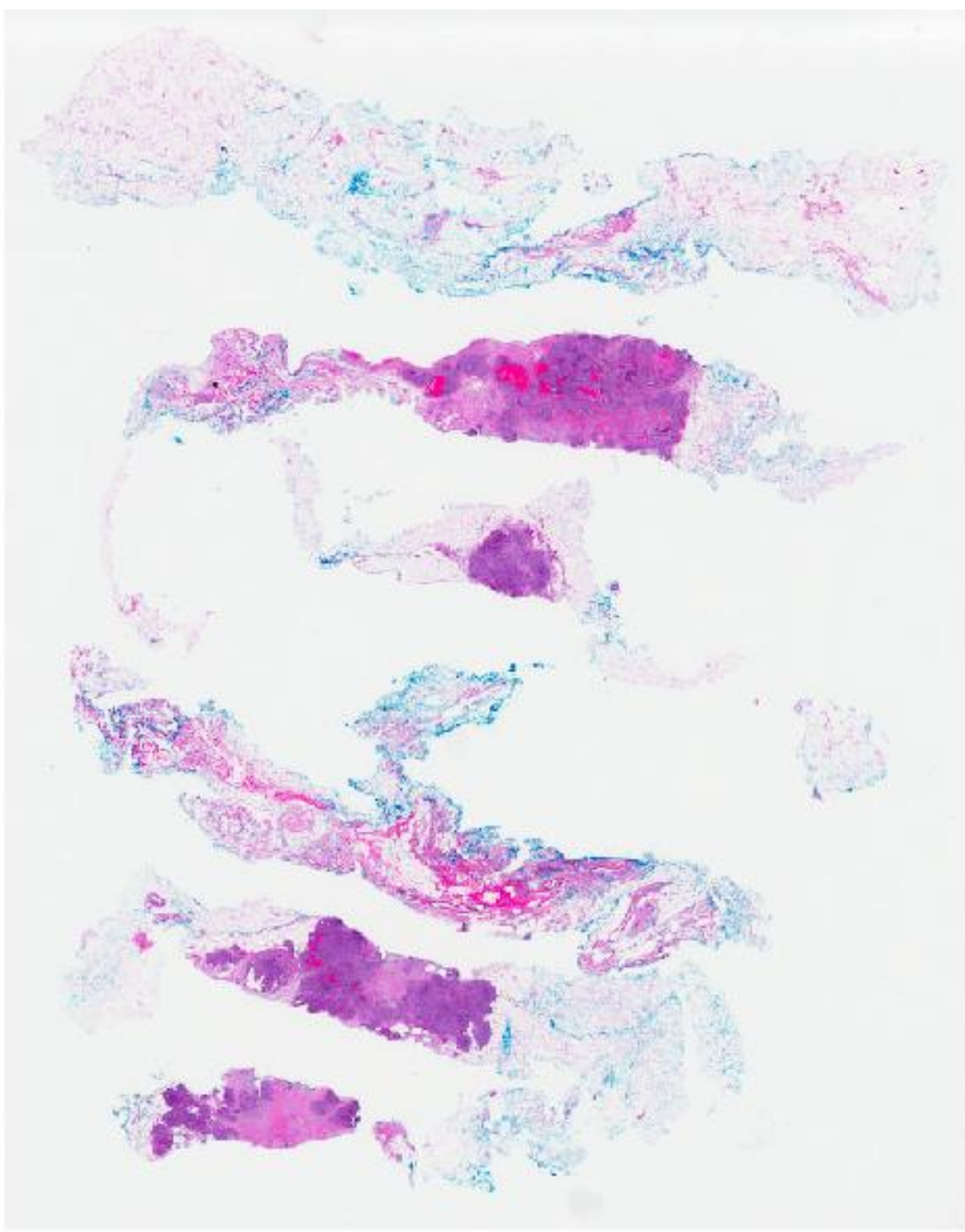


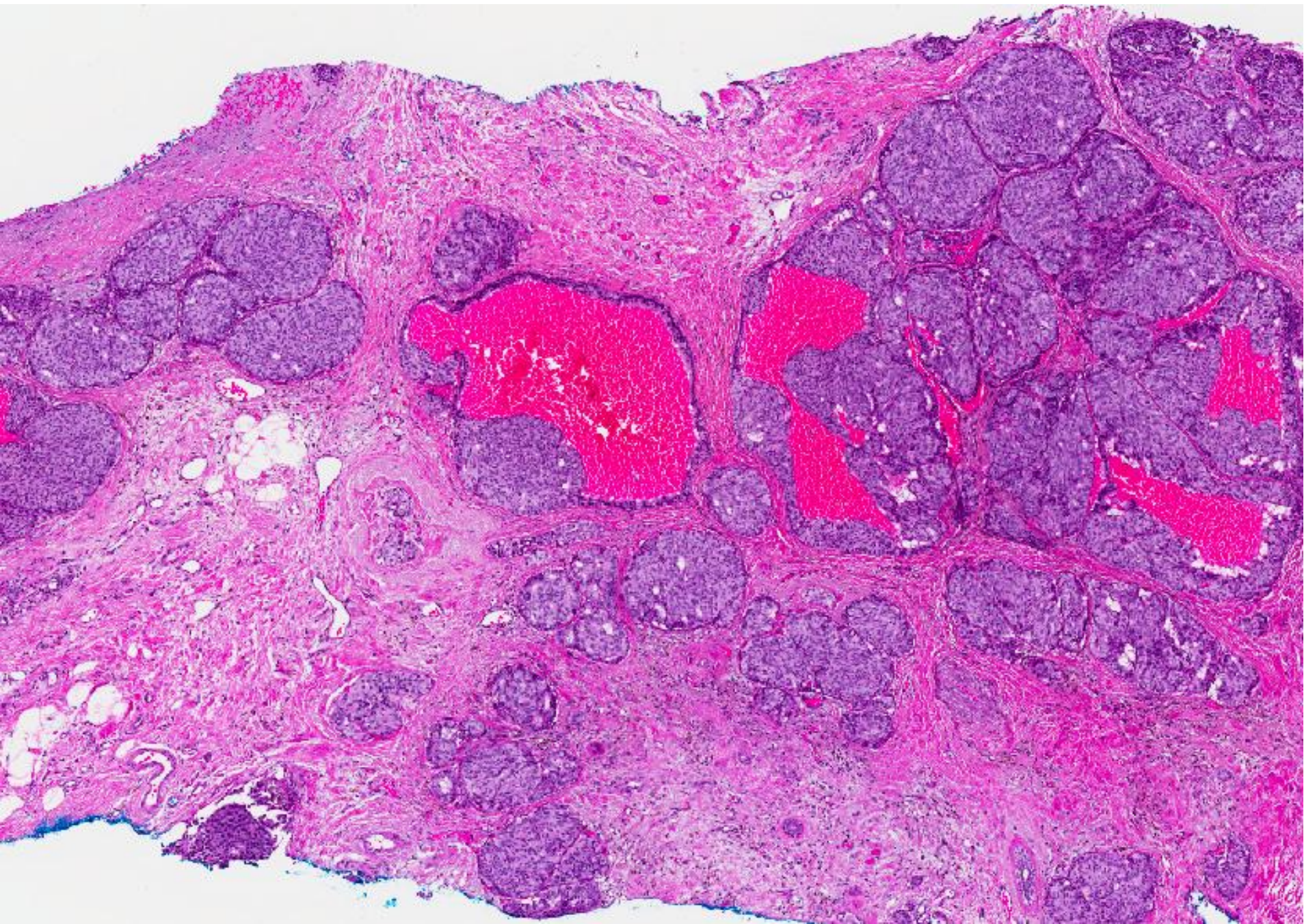


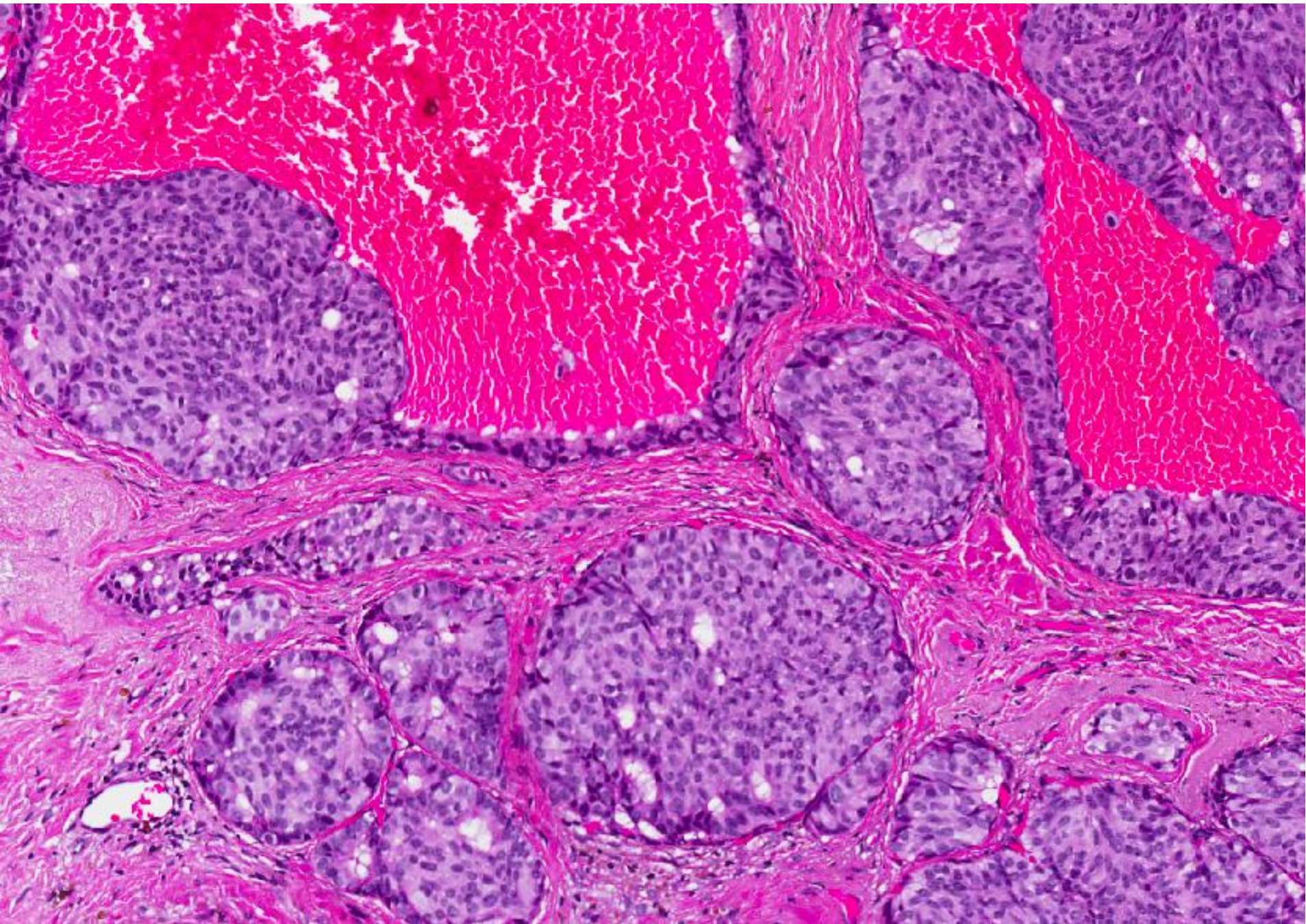












Diagnosis

- Spindle cell ductal carcinoma in situ.
(synaptophysin+, ER+, PR-)

Spindle cell DCIS

- Mimics benign usual ductal hyperplasia.
- Clues to correct diagnosis:
 - Uniform single cell population with lack of cellular heterogeneity.
 - Pseudorosettes around small vessels.
 - Accompanying traditional forms of DCIS.
 - Mucin production.
- Immunohistochemistry often demonstrates neuroendocrine differentiation.