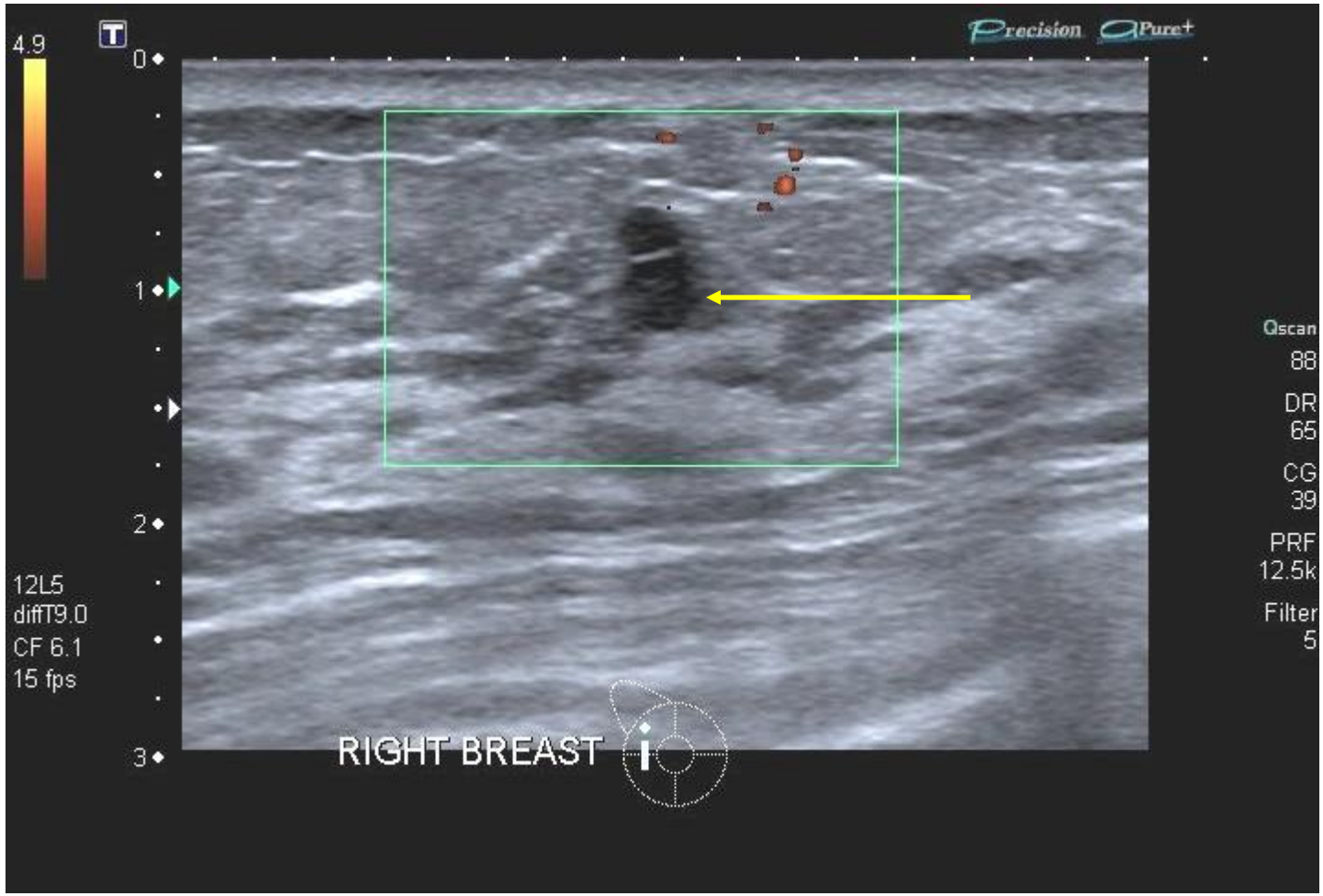


CASE 8

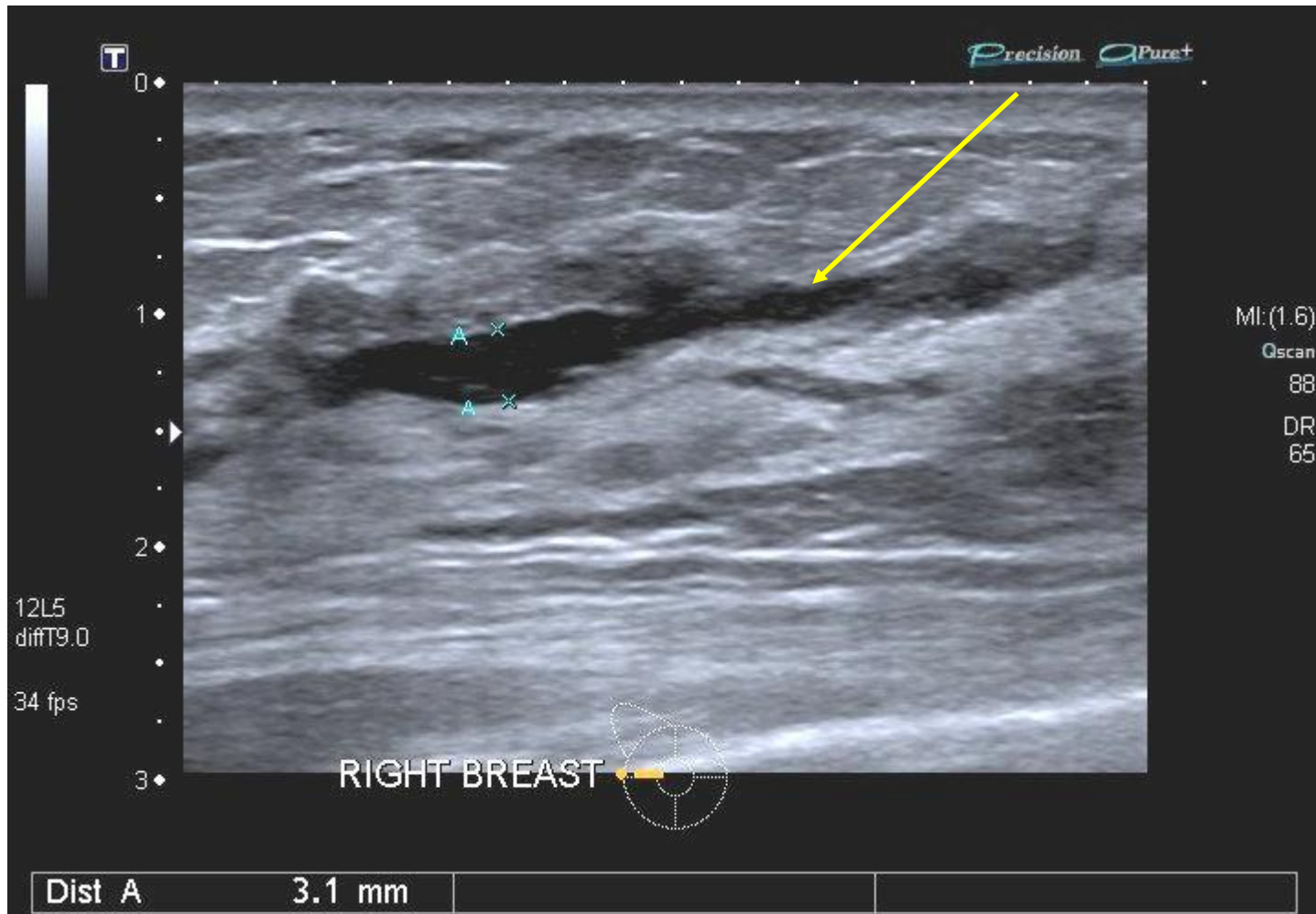
36 year old Chinese lady complained of right nipple discharge.

Ultrasound scans showed a dilated intramammary duct with non-specific echoes within.

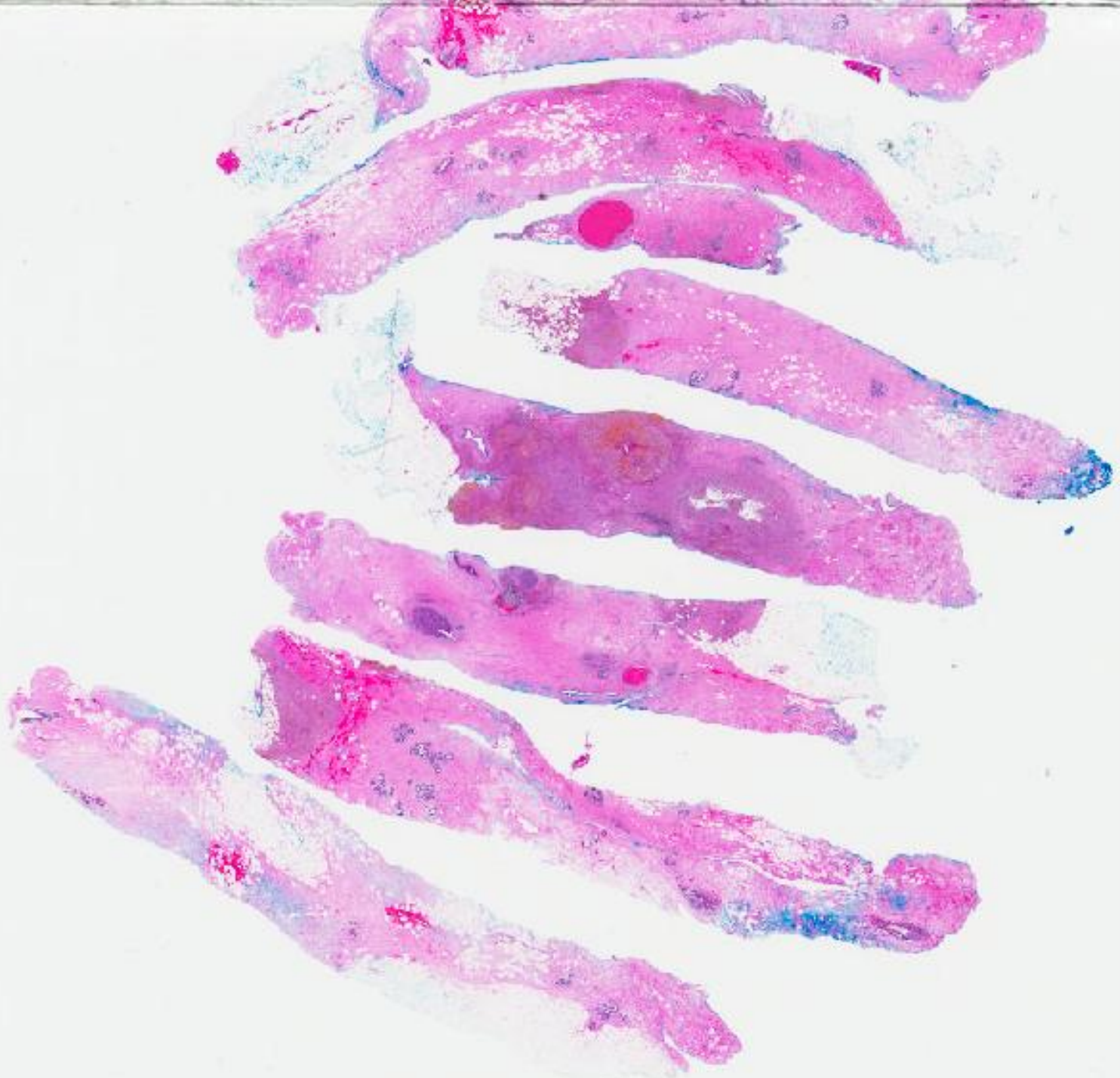
A mammotome biopsy of the lesion was performed.

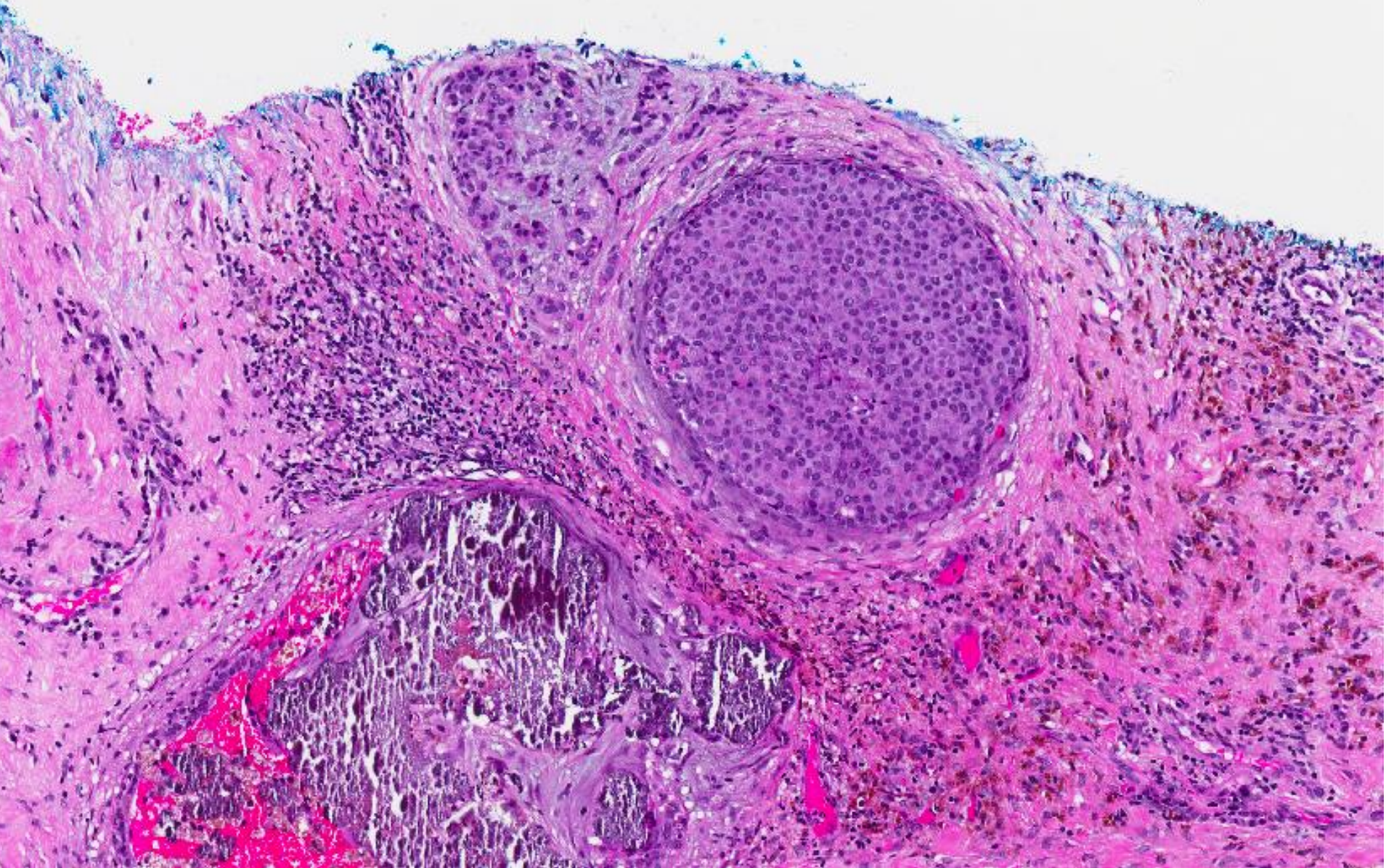


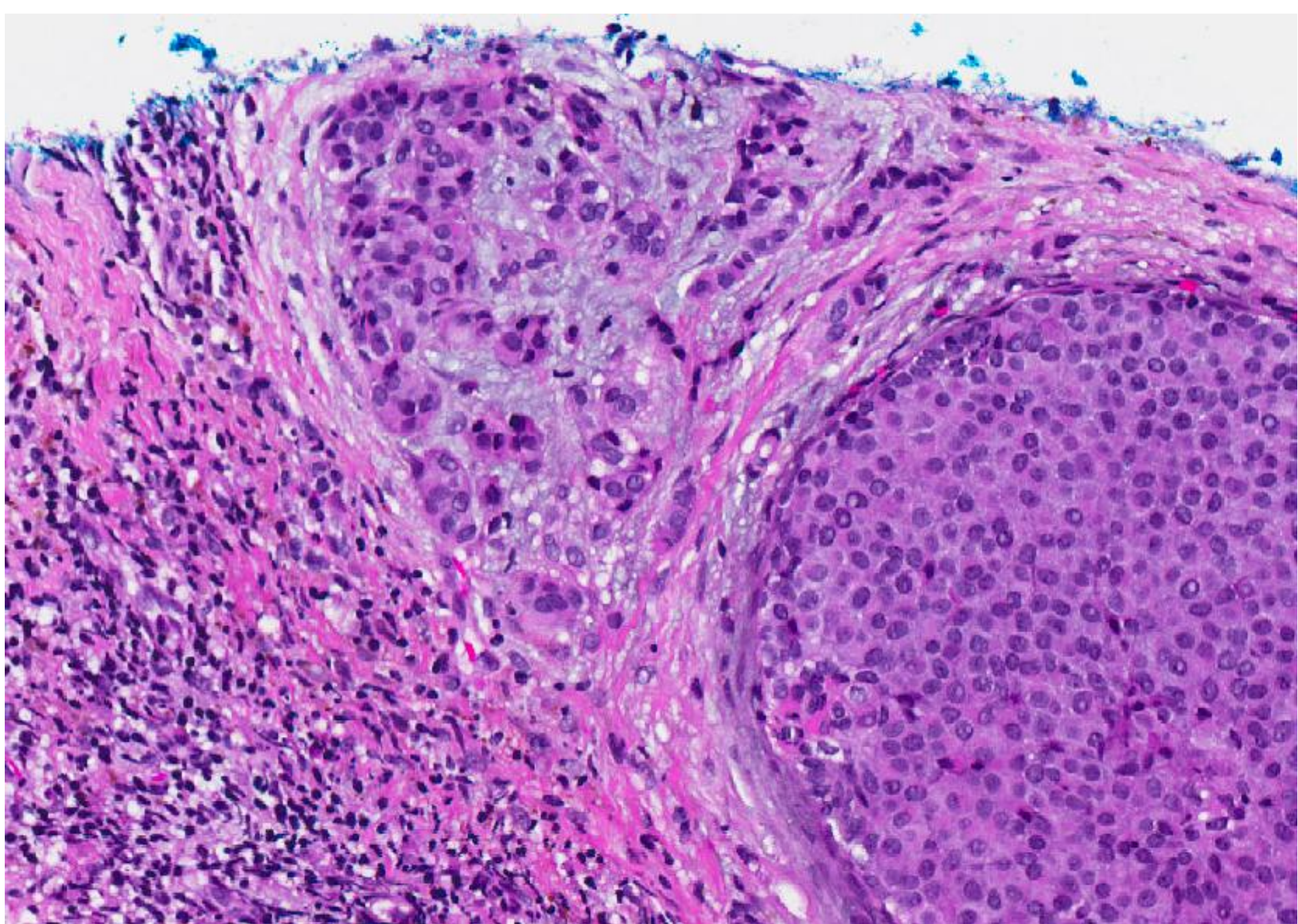
Dilated intramammary duct with some non-specific echoes within it (yellow arrow)

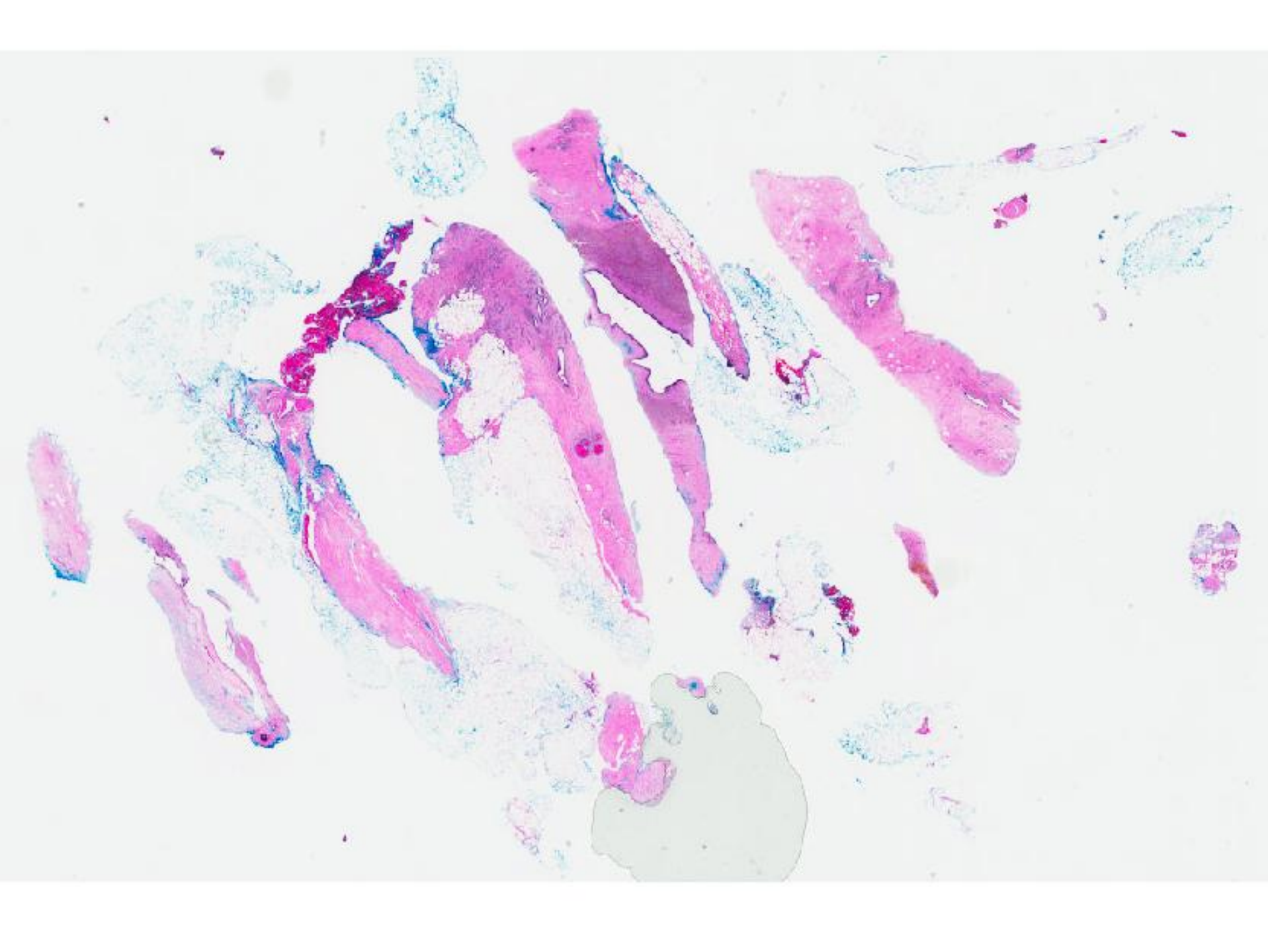


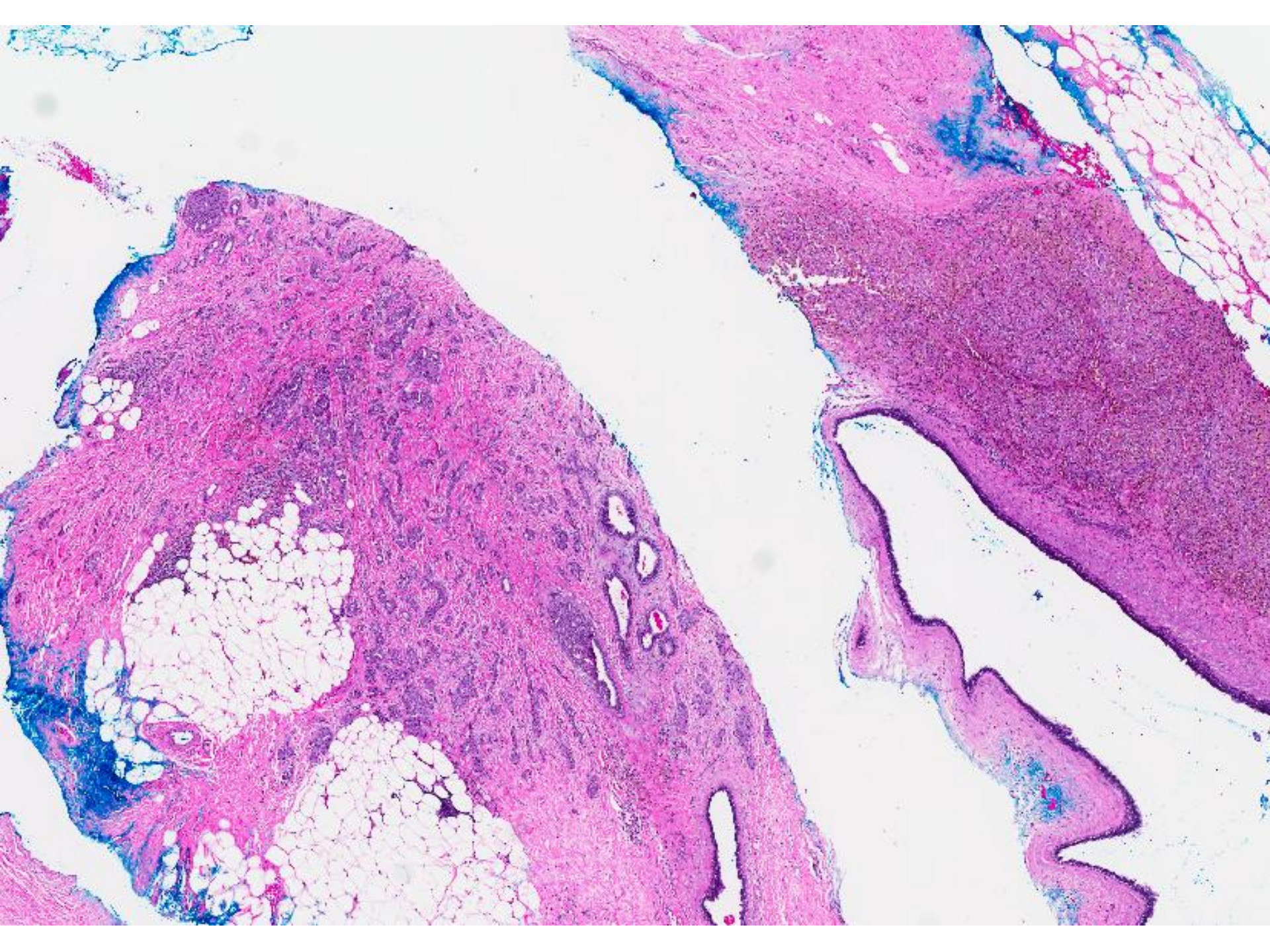
Dilated intrammary duct with some non-specific echoes within it (yellow arrow)

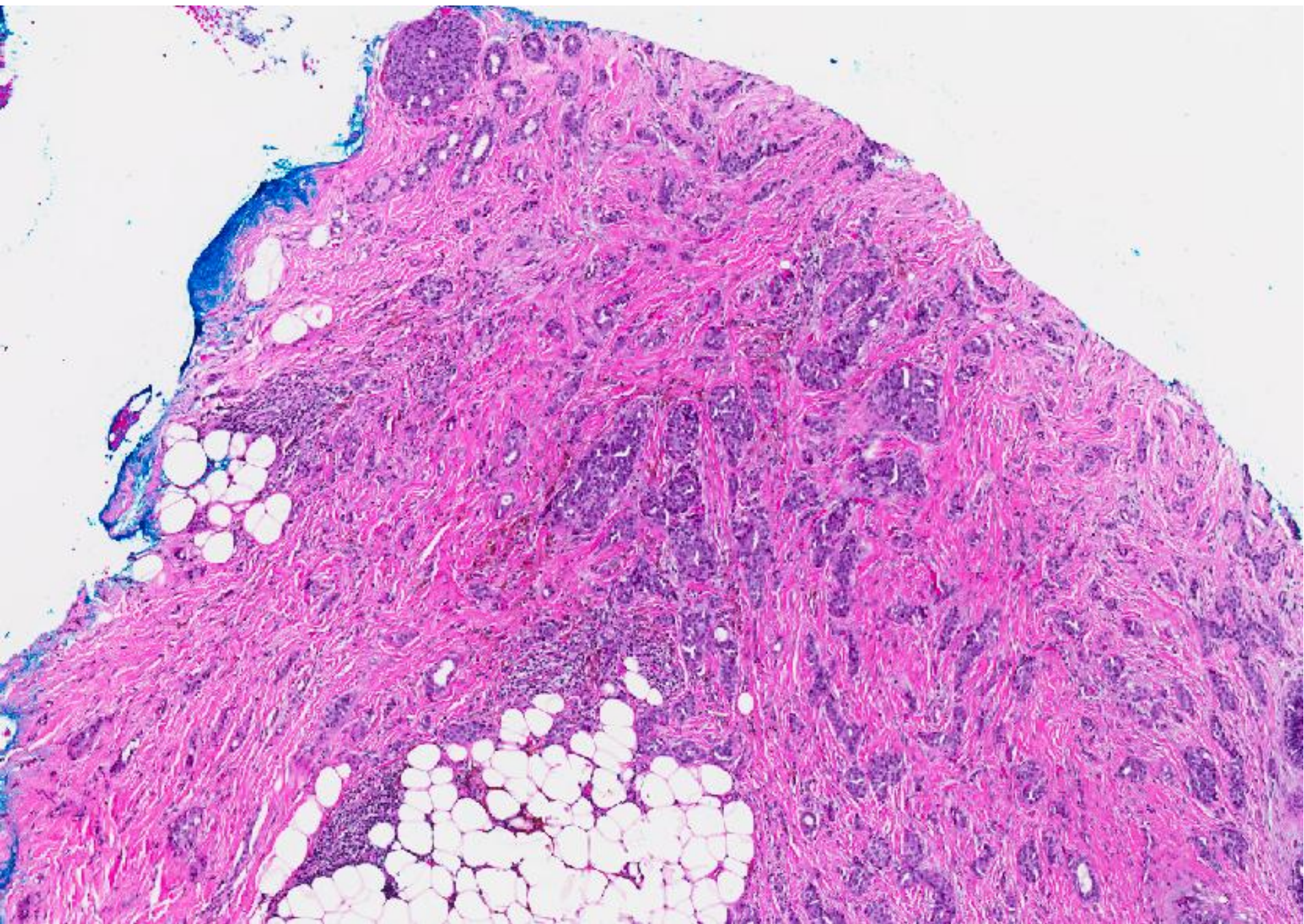


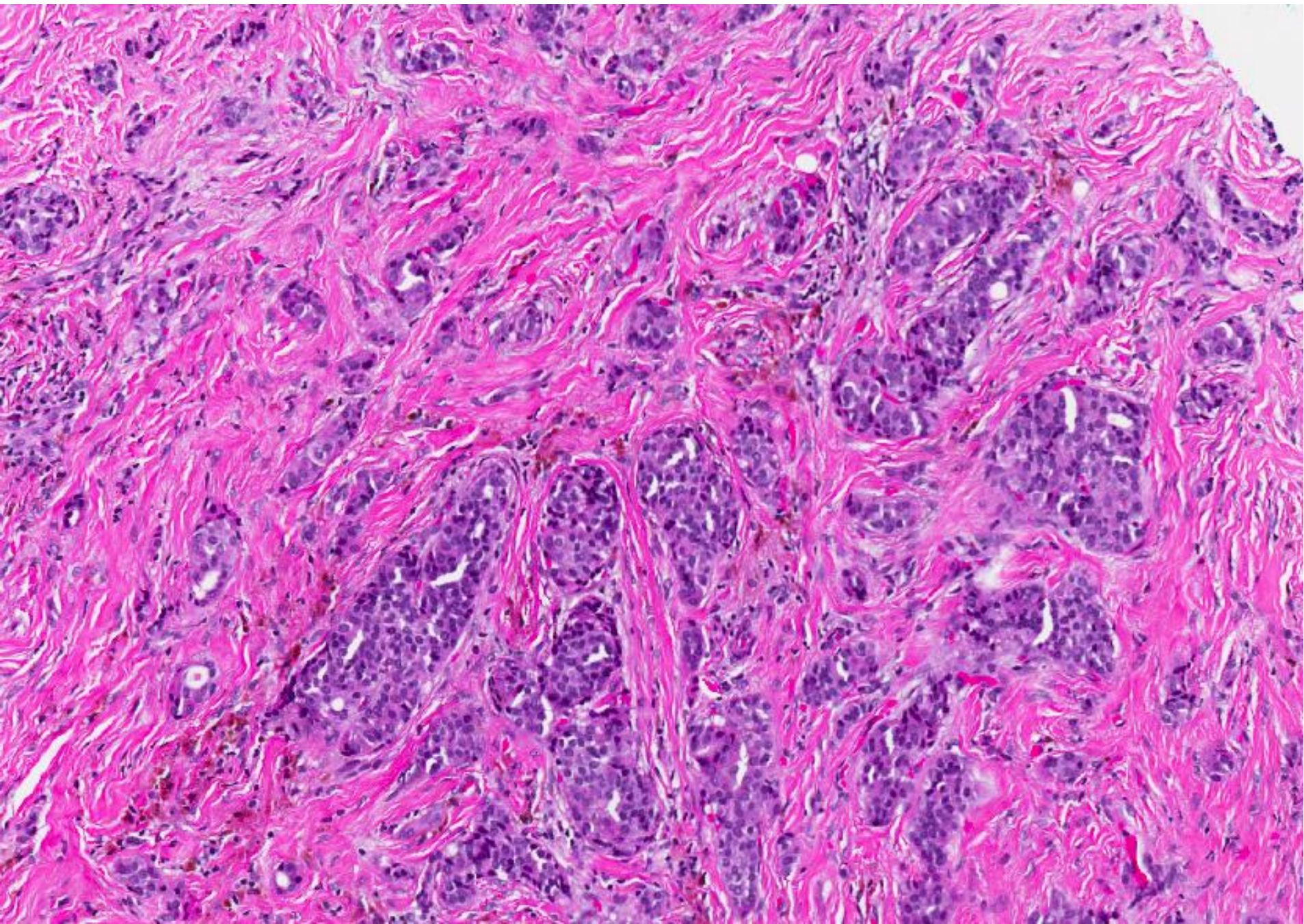


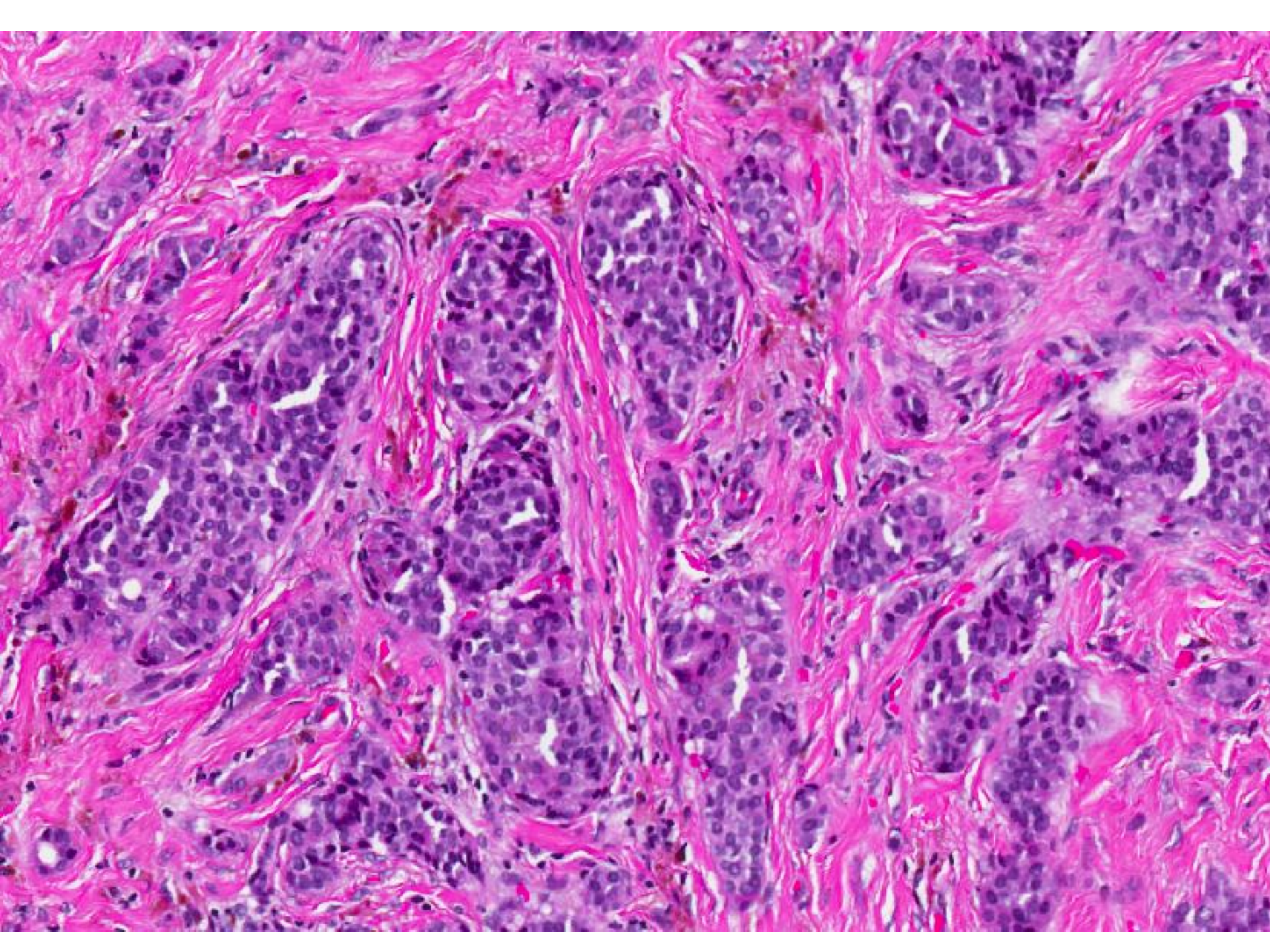












Diagnosis

- Incidental low grade invasive carcinoma with ductal features, 3 mm.
- Fibrocystic changes with duct ectasia, granulomatous response and dystrophic calcification.