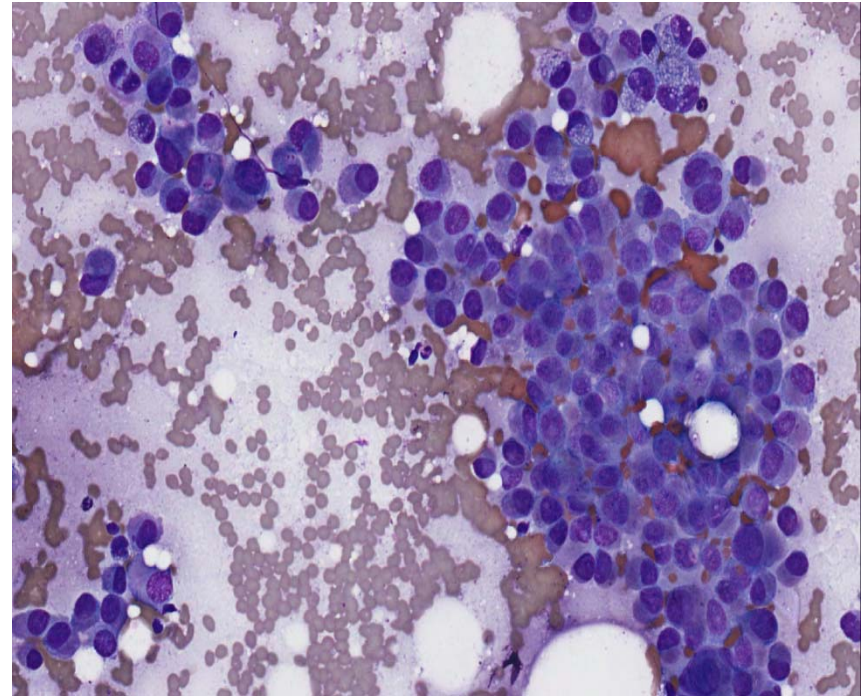
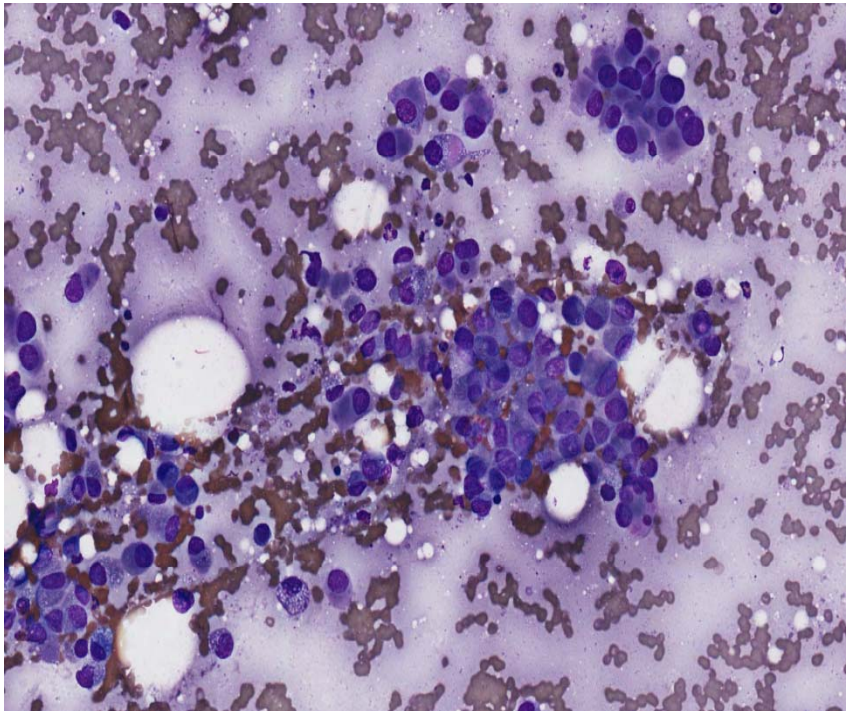


Set D.8

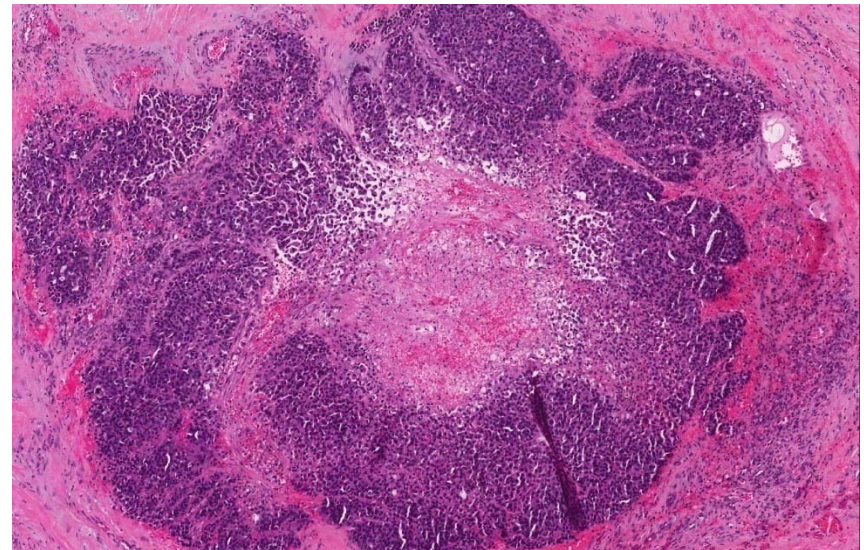
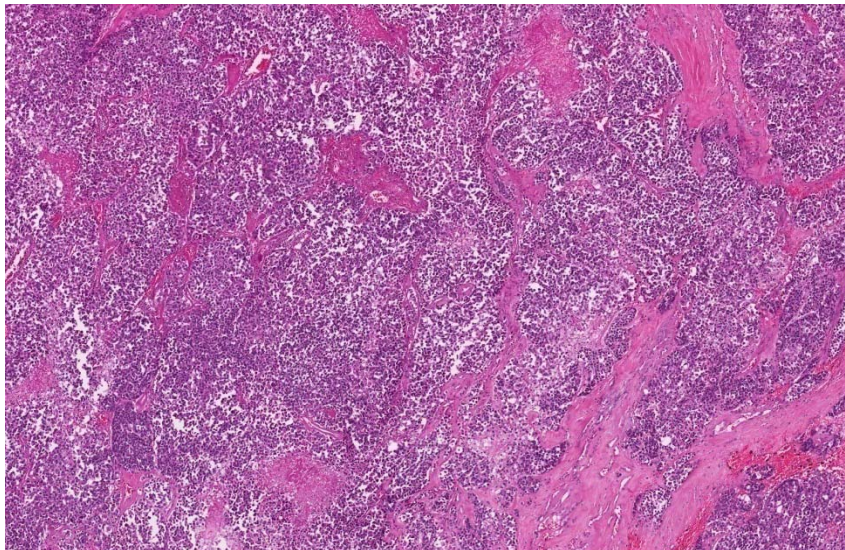
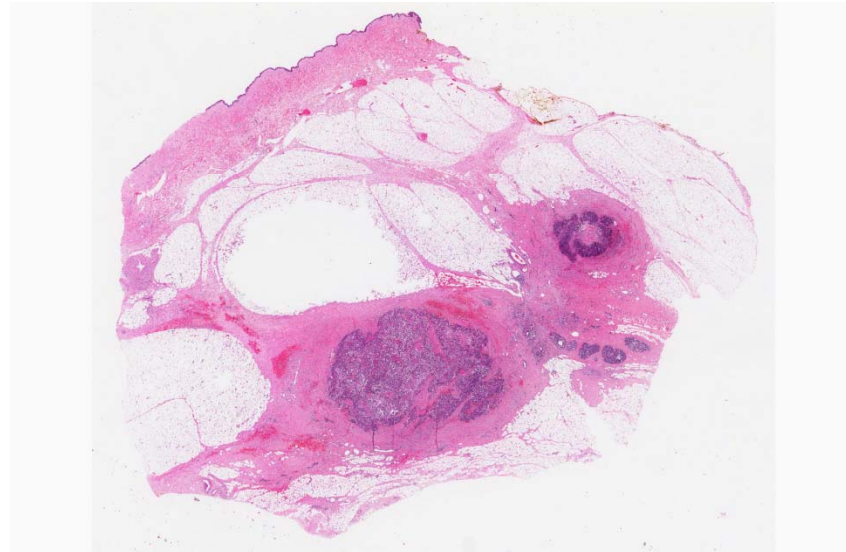
- 74 year old Chinese female underwent a simple right mastectomy for a right breast mass at 6 o'clock position, for which prior FNAC yielded malignant cells.
- The mastectomy specimen contained a fairly circumscribed, yellowish-white and haemorrhagic lesion measuring up to 2.2 cm.

Set D.8

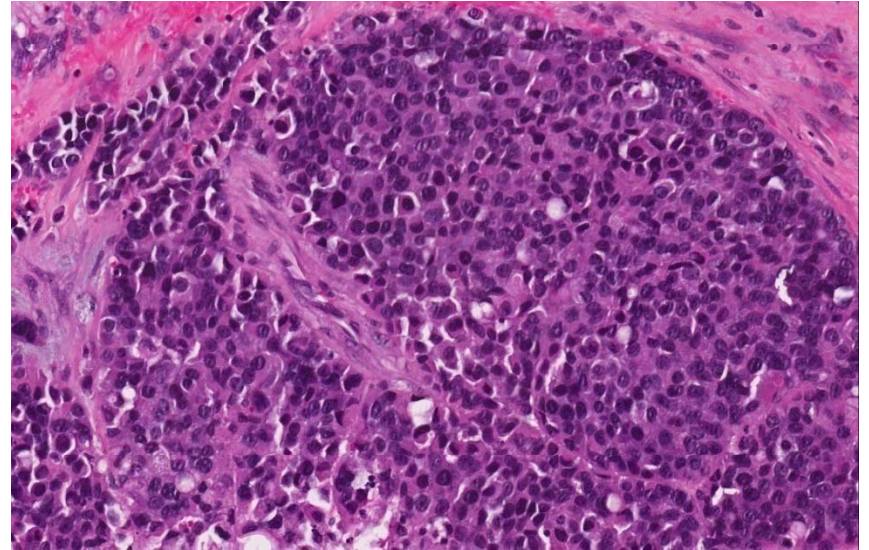
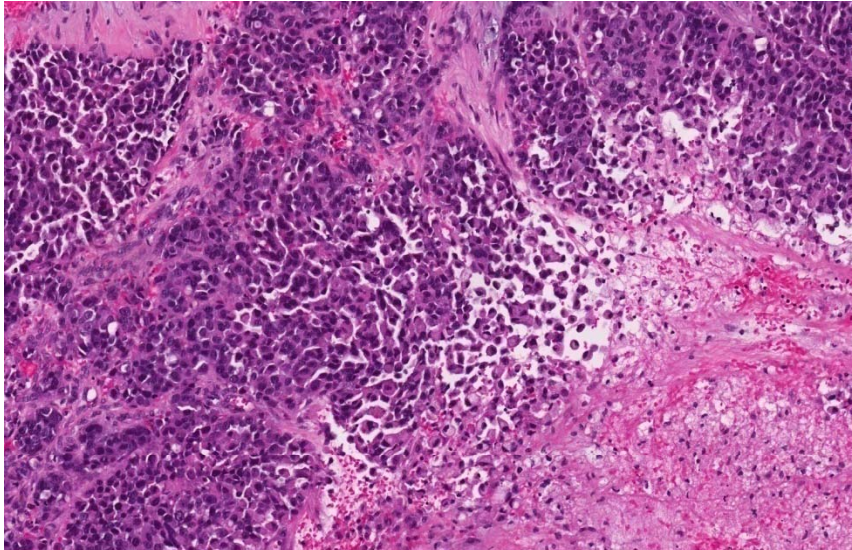
FNAC (Diffquik)



Set D.8

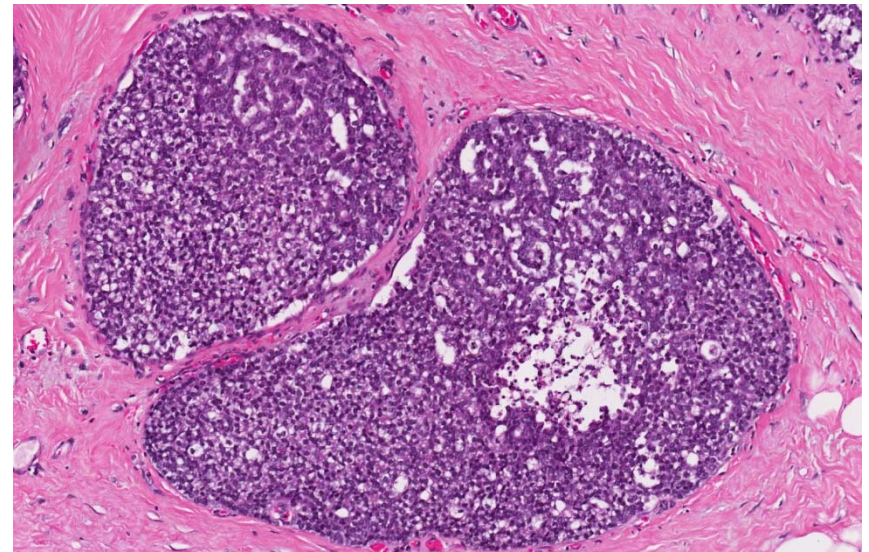
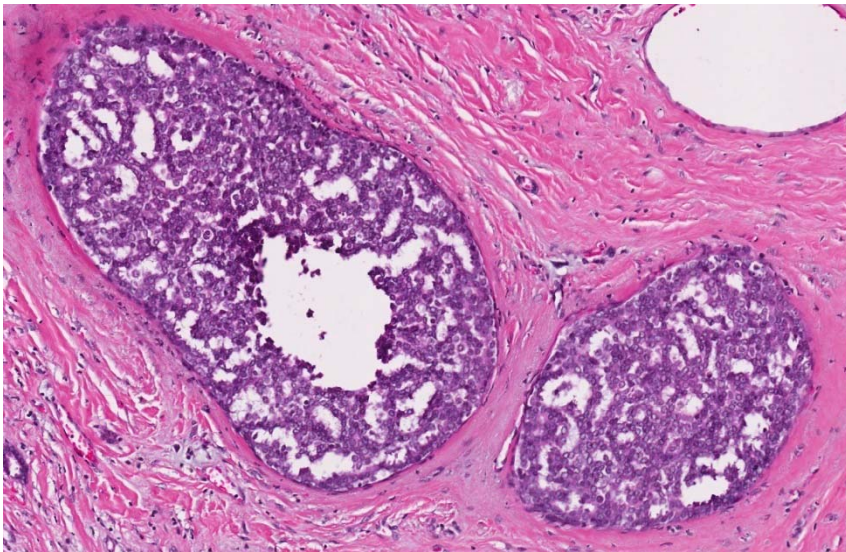
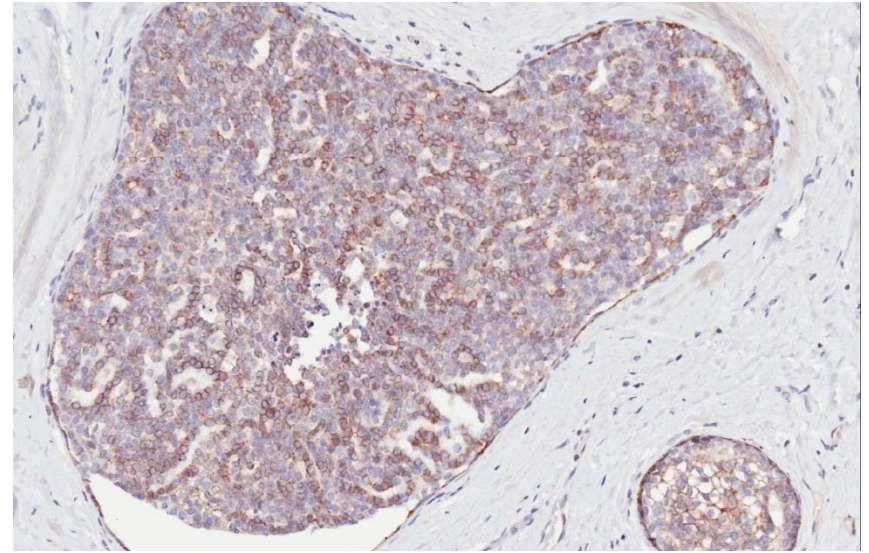
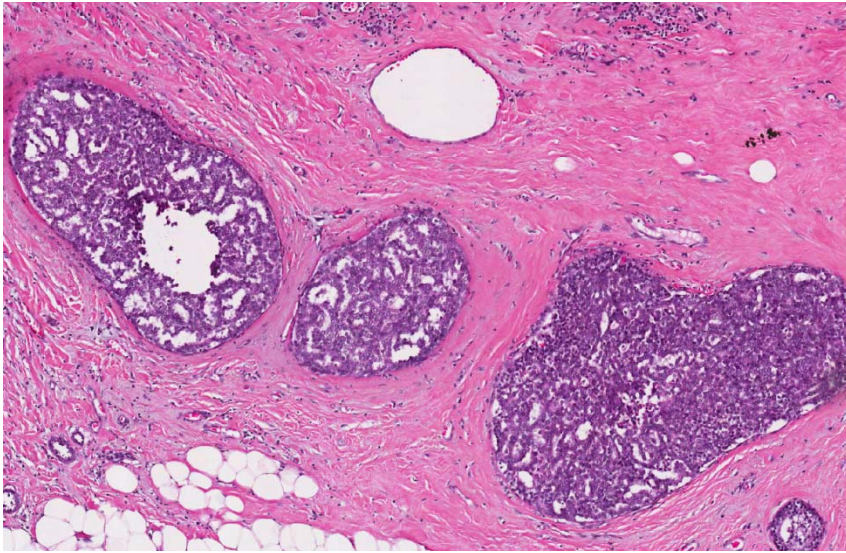


Set D.8



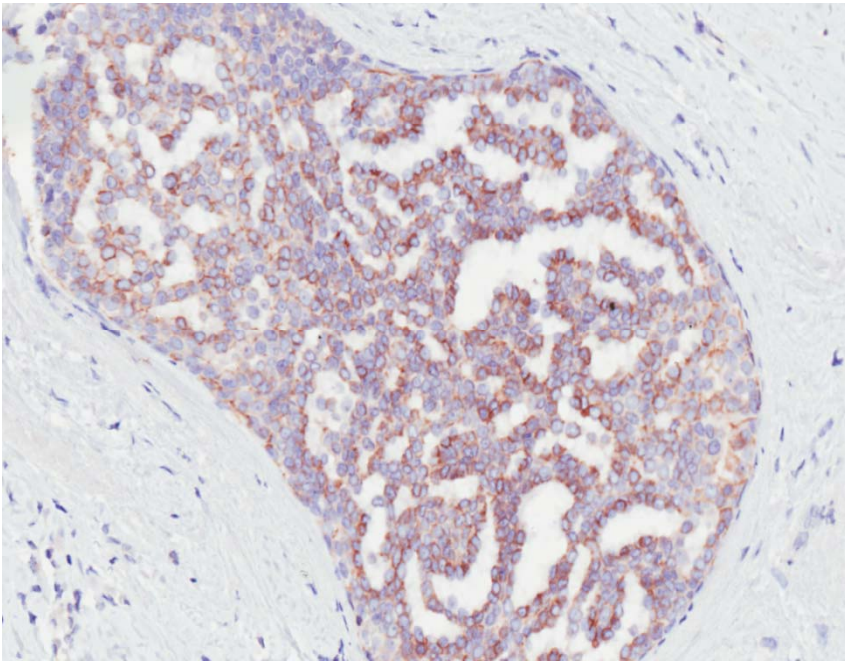
Set D.8

E-cadherin

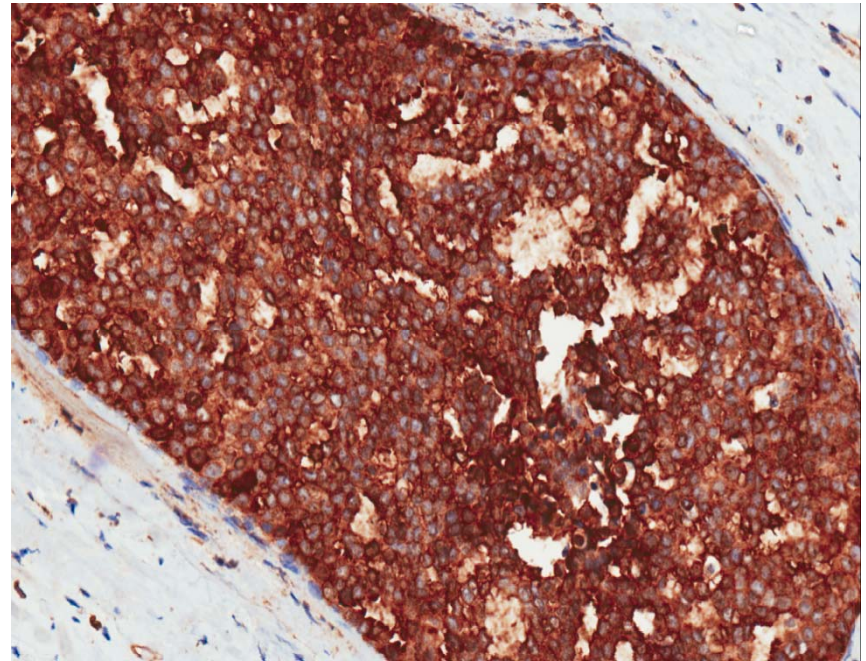


Set D.8

E-cadherin

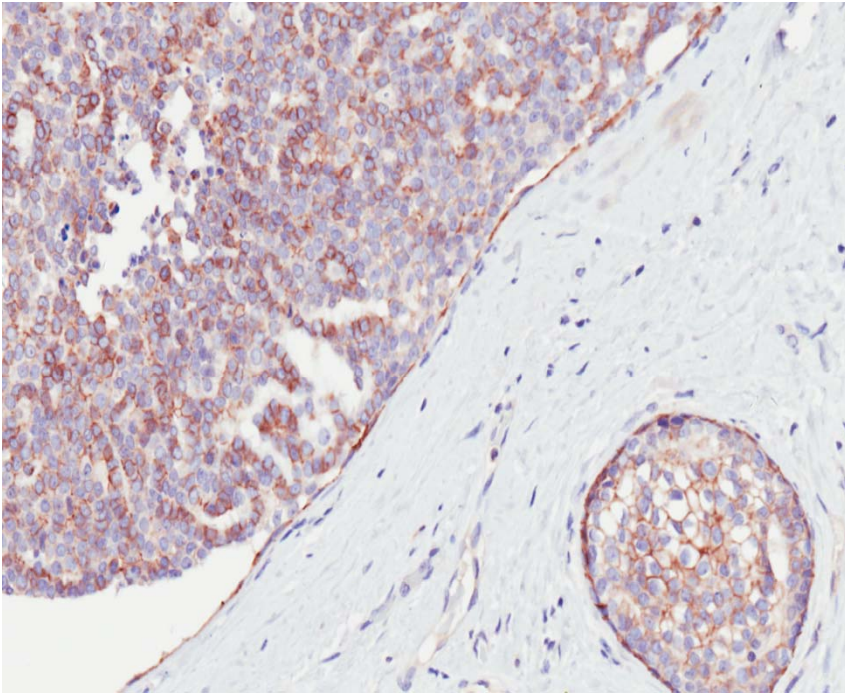


p120 catenin

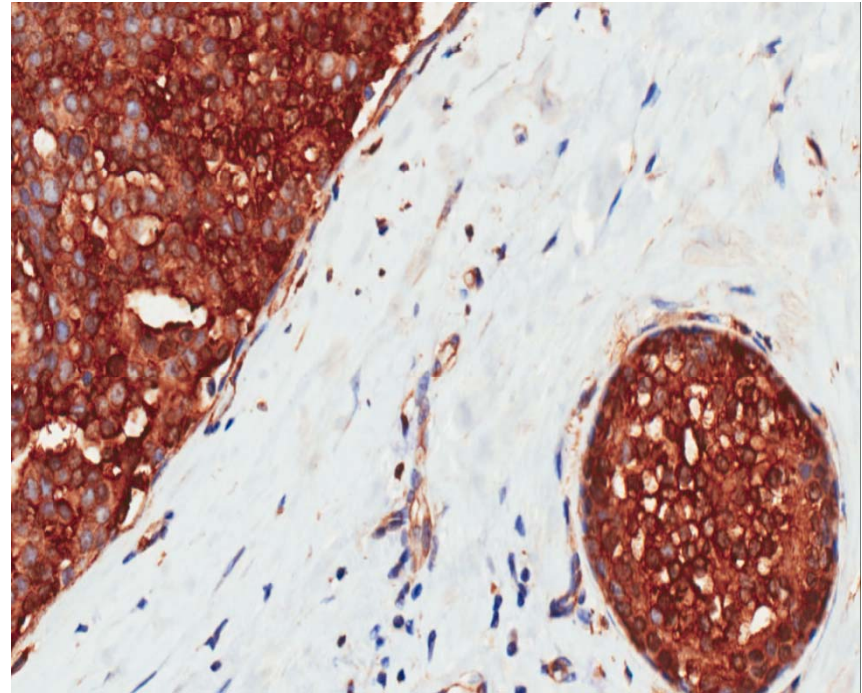


Set D.8

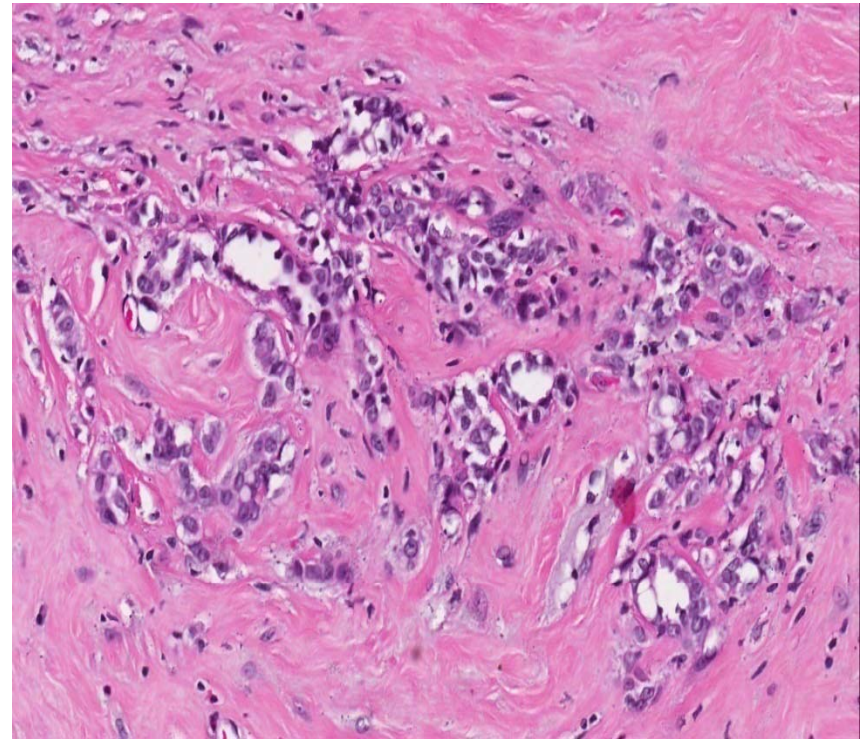
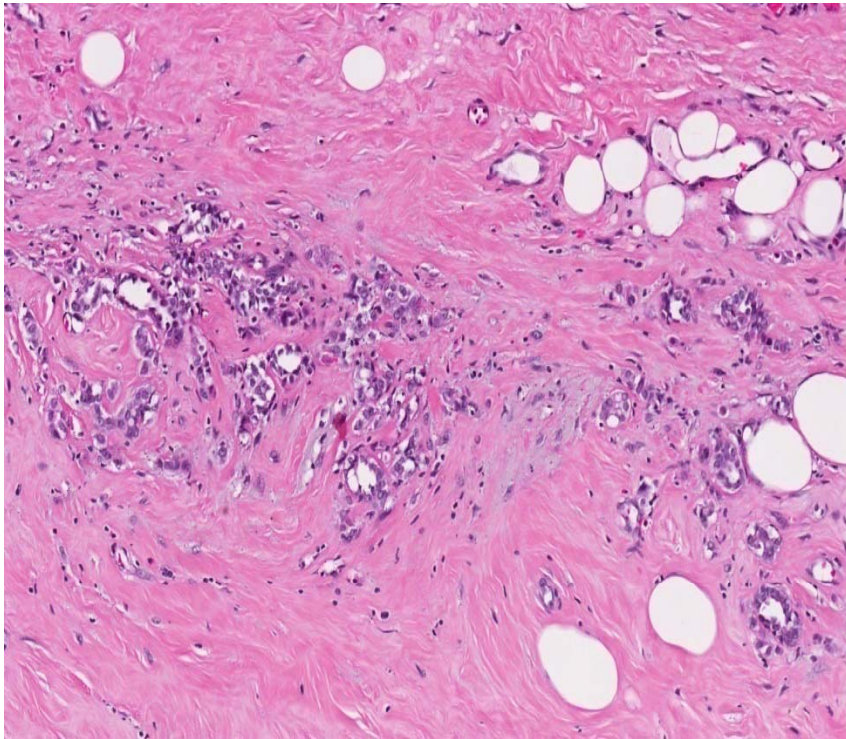
E-cadherin



p120 catenin

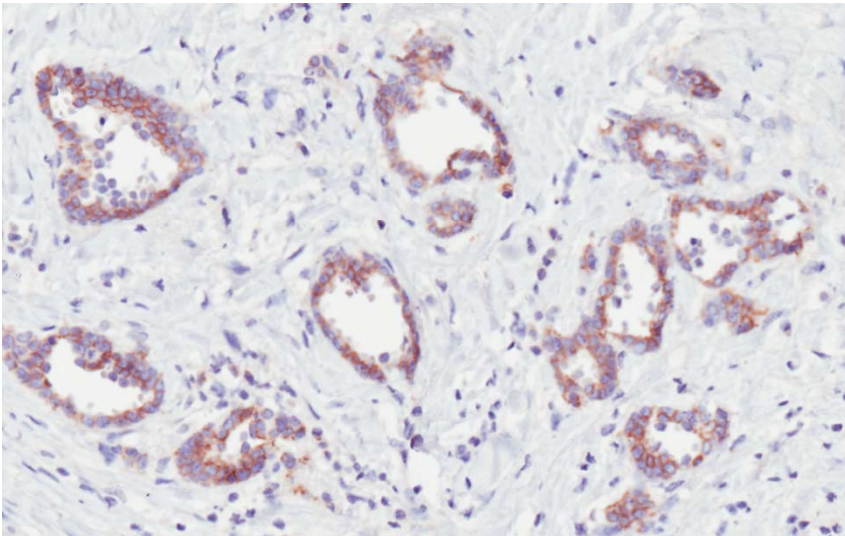


Set D.8

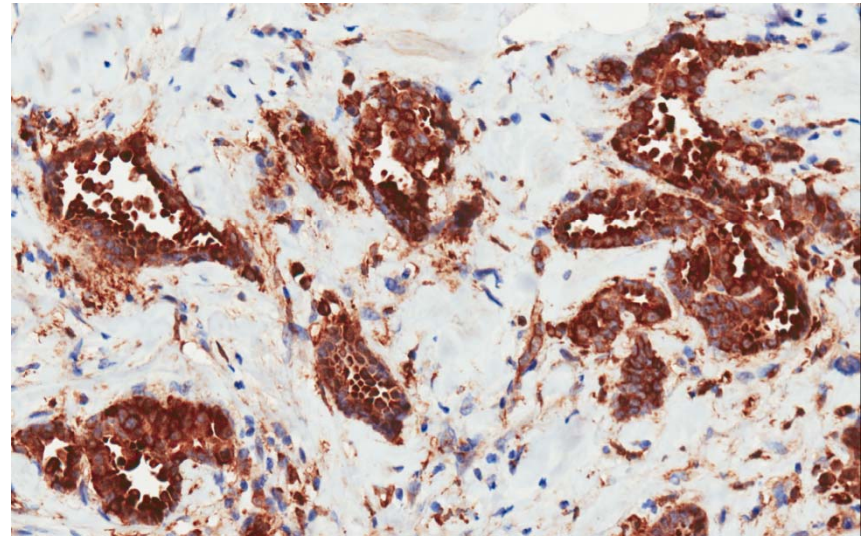


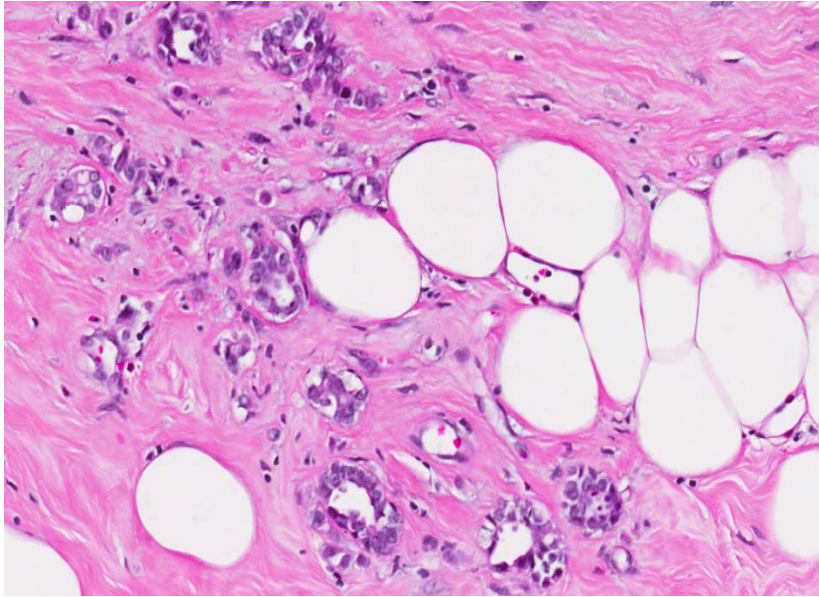
Set D.8

E-cadherin

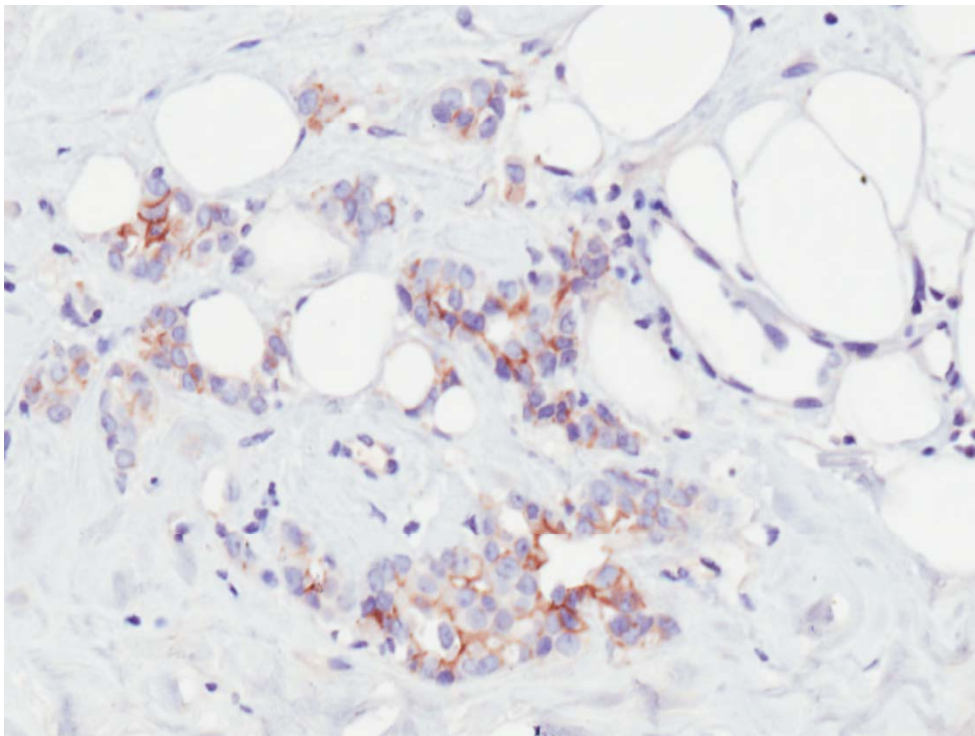


p120 catenin



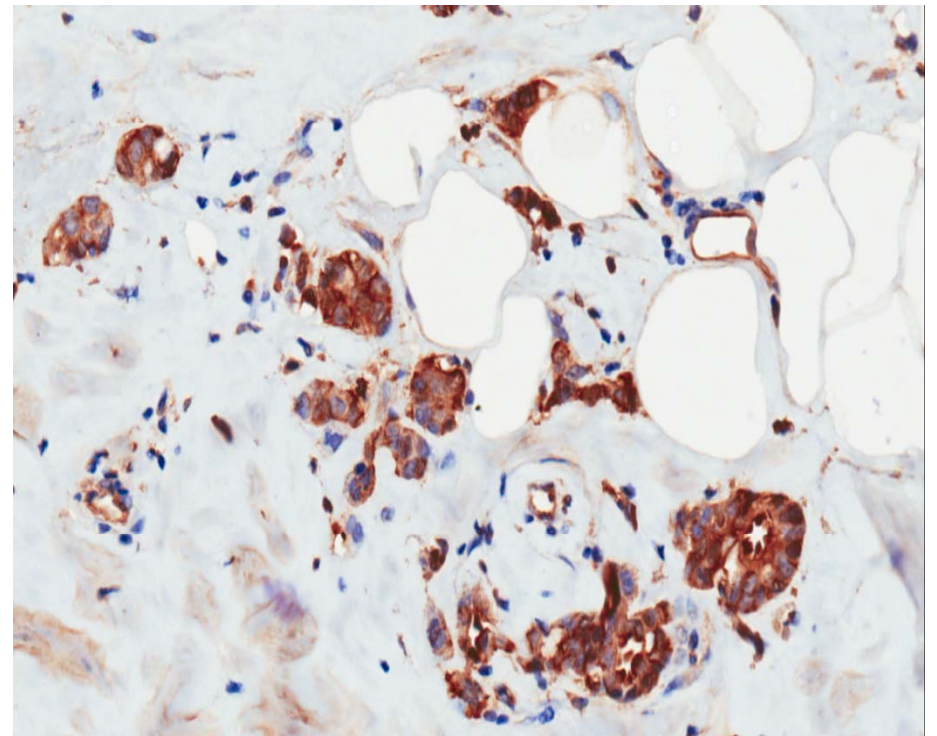


E-cadherin

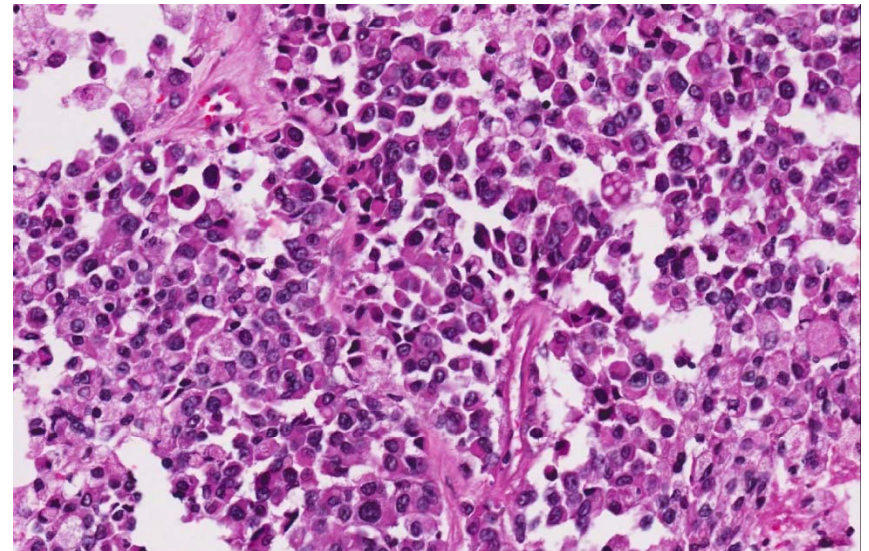
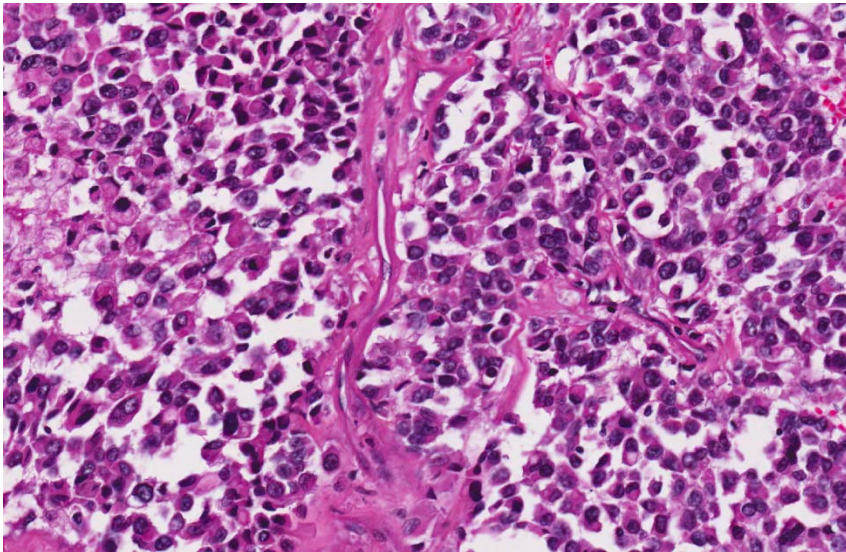
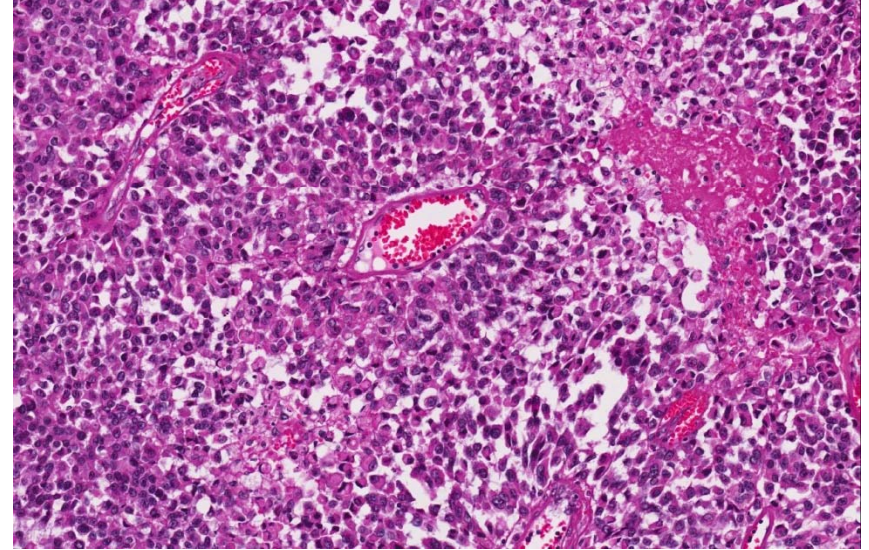
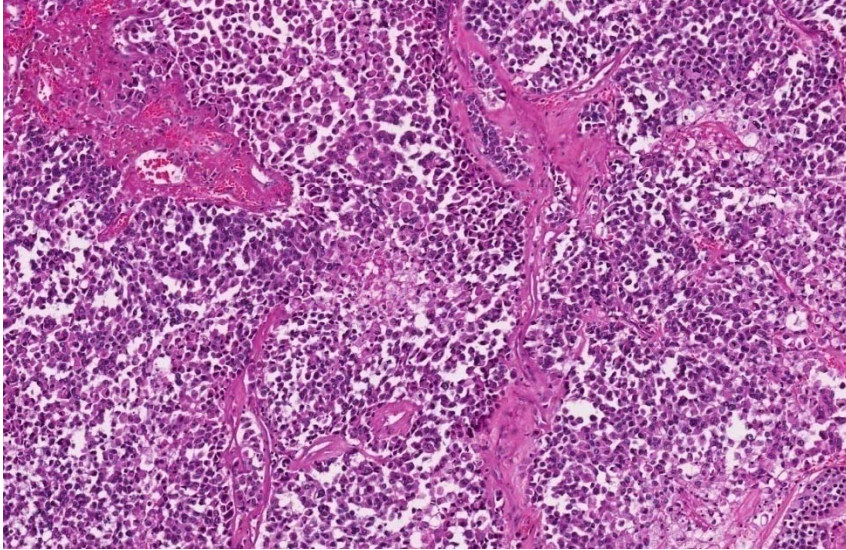


Set D.8

p120 catenin

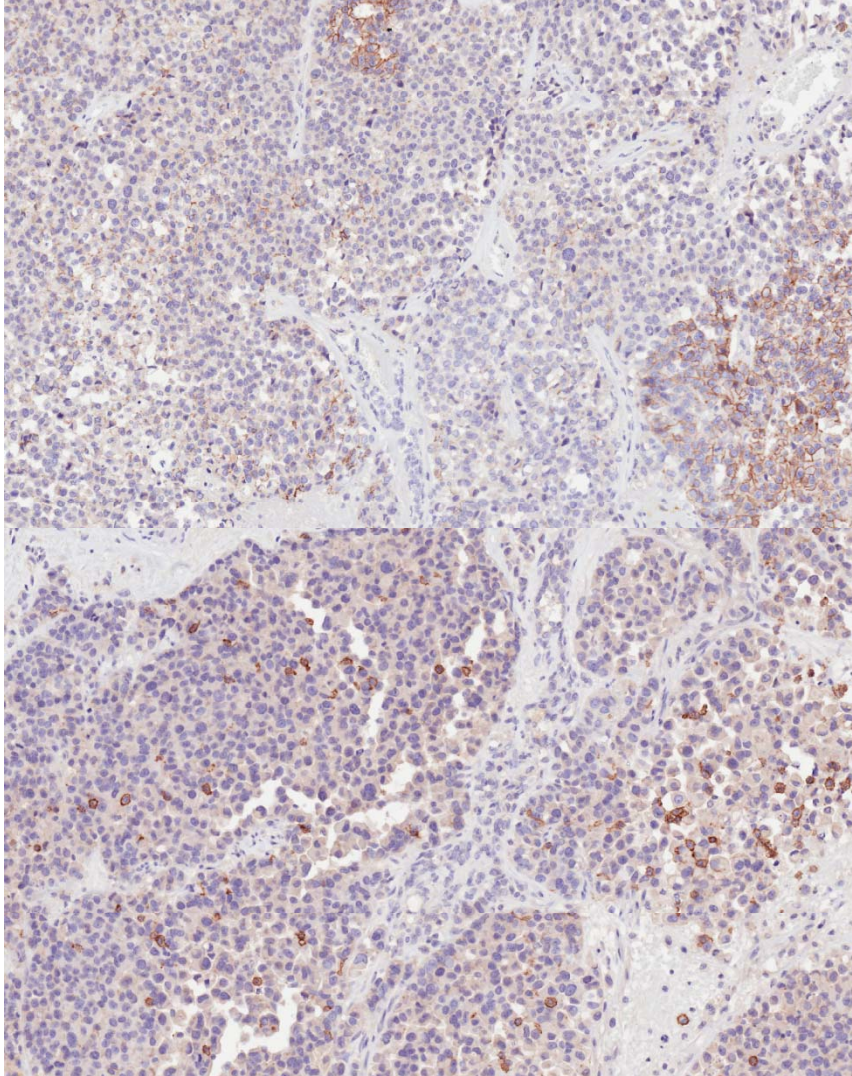


Set D.8

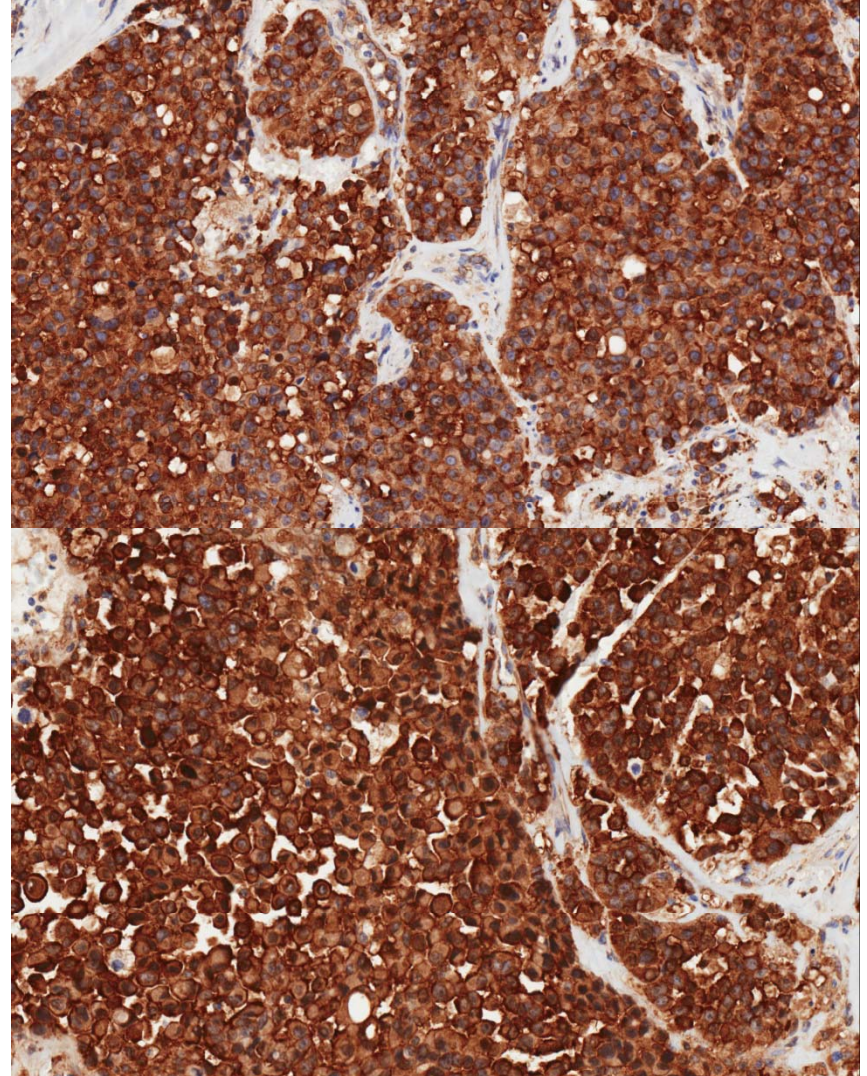


Set D.8

E-cadherin

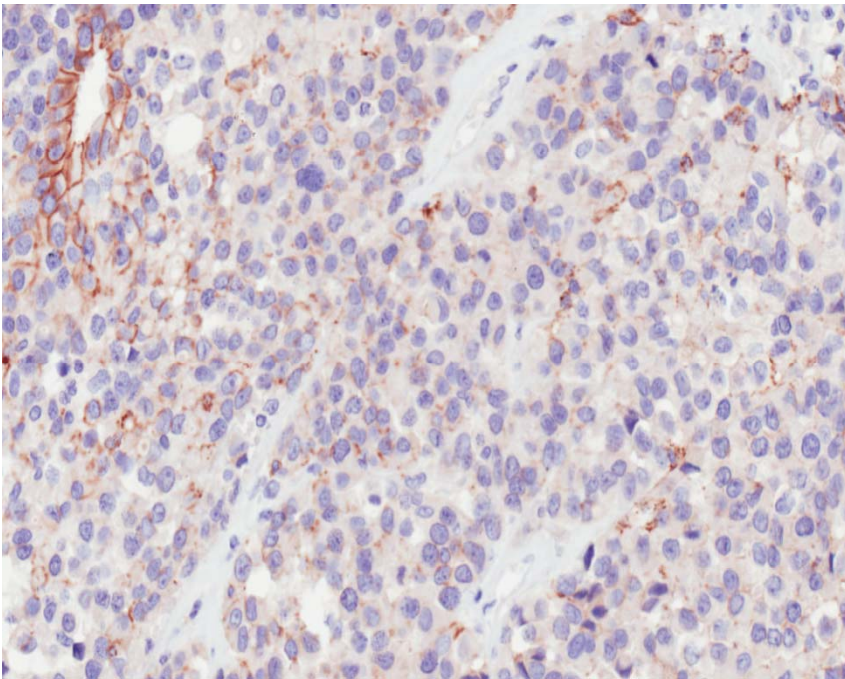


p120 catenin

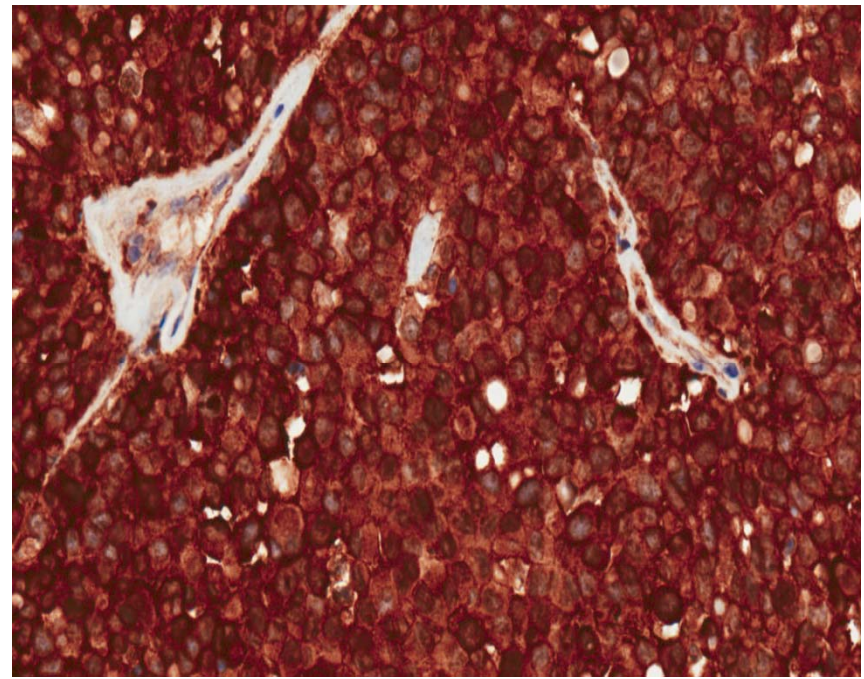


Set D.8

E-cadherin



p120 catenin



- Invasive pleomorphic lobular carcinoma.
- Invasive tubular carcinoma.
- Low nuclear grade DCIS.
- Lobular neoplasia.

Invasive pleomorphic lobular carcinoma

- Infiltrating pattern of classic ILC.
- Marked nuclear pleomorphism.
- Clinical course is more aggressive.

FNAC of pleomorphic ILC

- Auger M. Cancer 1997 Feb 25;81(1):29-32.
 - 405 breast FNAs: 7 examples of classic infiltrating lobular carcinoma and 4 cases of pleomorphic variant; all histologically confirmed.
 - FNA from 3 of 4 pleomorphic variant cases and from 2 of 7 classic lobular carcinoma cases were diagnostic of malignancy.
 - Although exhibiting many cytologic features in common with classic ILC, FNA of pleomorphic variant differed in their tendency to yield greater cellularity, larger cell size, and more pleomorphic nuclei.
 - FNAC findings of pleomorphic ILC are characteristically hybrid between those of classic ILC and IDC.

Prognosis of pleomorphic ILC

- Weidner N. Hum Pathol 1992 Oct;23(10):1167-71.
 - 25 patients with classic ILC compared with 16 patients with pleomorphic ILC.
 - Criteria for pleomorphic ILC: presence of nuclei of nuclear grade 2 or 3.
 - All classic ILC had nuclei of grade 1.
 - Survival to recurrence was significantly worse for patients with pleomorphic ILC at lengths of survival > 30 months.
 - Node-negative patients with pleomorphic ILC 4x more likely to experience recurrence than node-negative patients with classic ILC.
 - Those with positive nodes and pleomorphic histology were 30x more likely to experience recurrence.
 - Trend toward decreased overall survival for patients with pleomorphic ILC compared to patients with classic ILC, but not statistically significant.

Learning points

- Criteria for pleomorphic ILC.
- Occurrence of composite tumor subtypes:
 - Lobular carcinoma.
 - Tubular carcinoma.
 - DCIS.
 - Lobular neoplasia.
- Difficulty of FNAC in distinguishing between pleomorphic ILC and NOS ductal carcinoma.