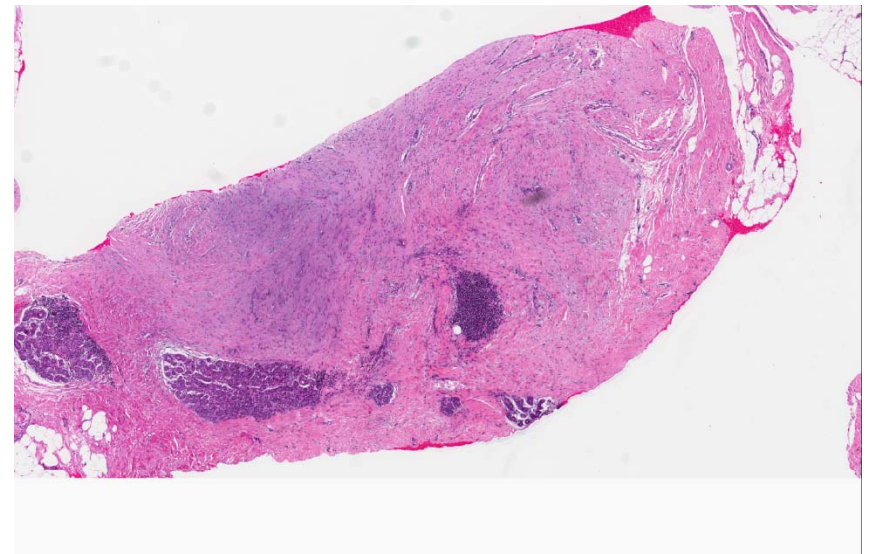
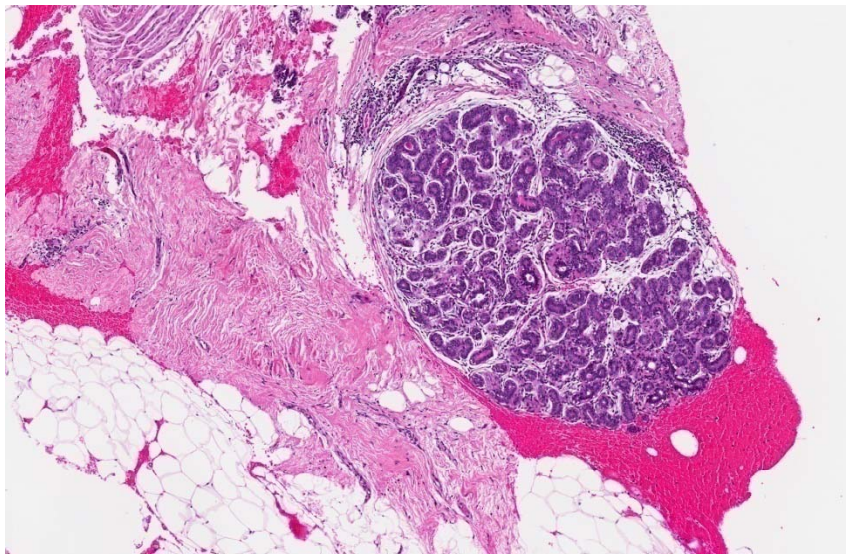
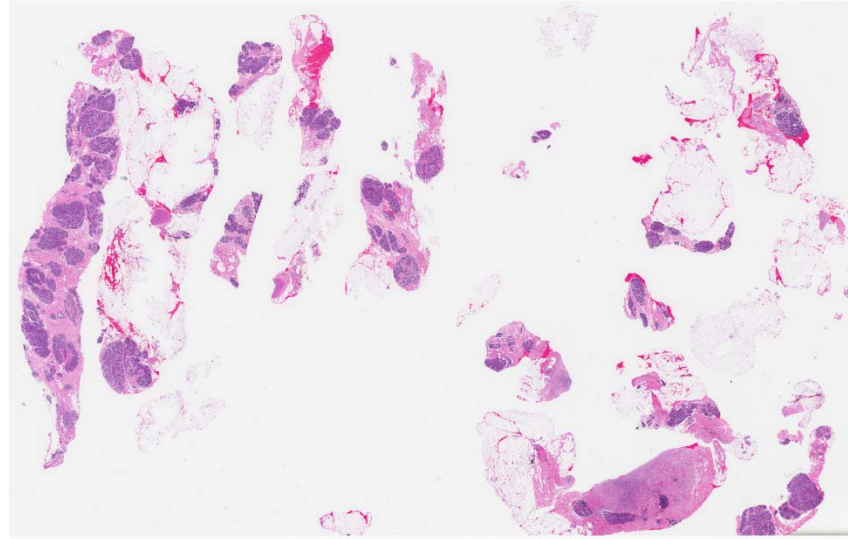


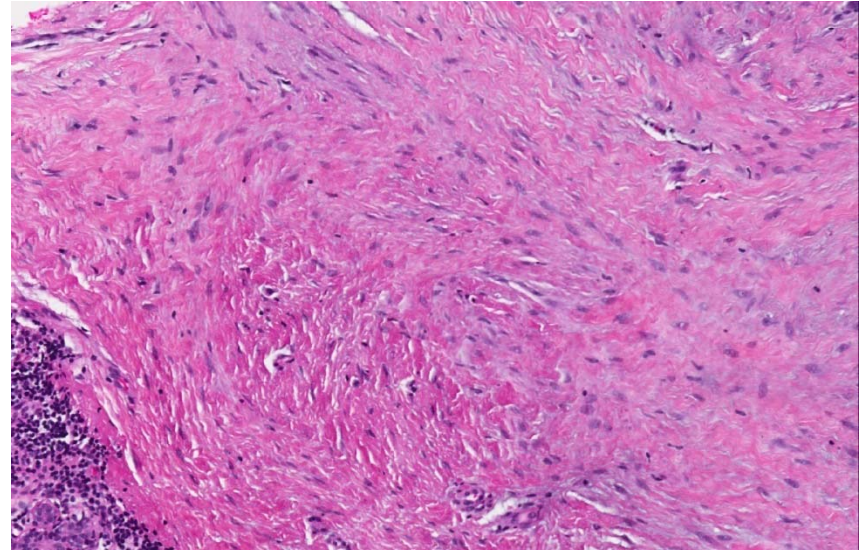
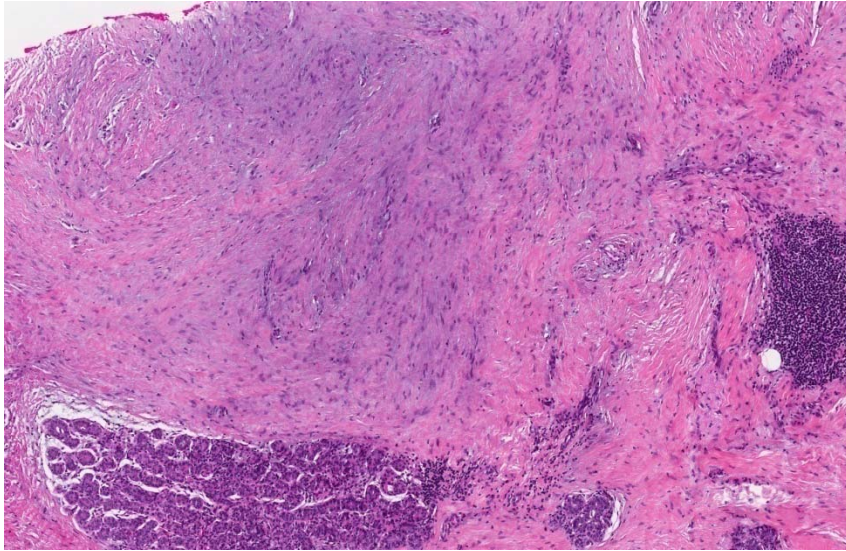
## Set D.4

- 44 year old Vietnamese female underwent mammotome biopsy of a left breast 10'clock lesion, radiologically described as a '0.9cm area of architectural distortion'.
- This was followed by an open excision.  
Images shown are of the mammotome biopsy.

# Set D.4

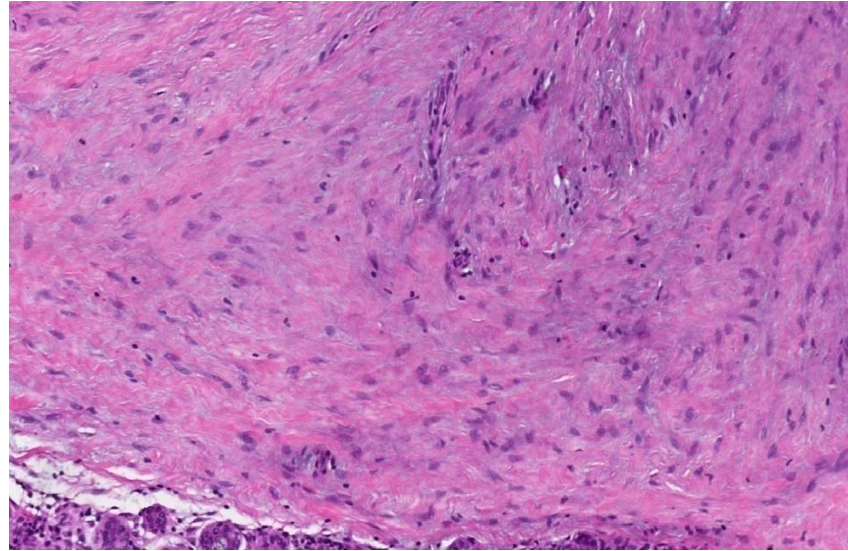


# Set D.4



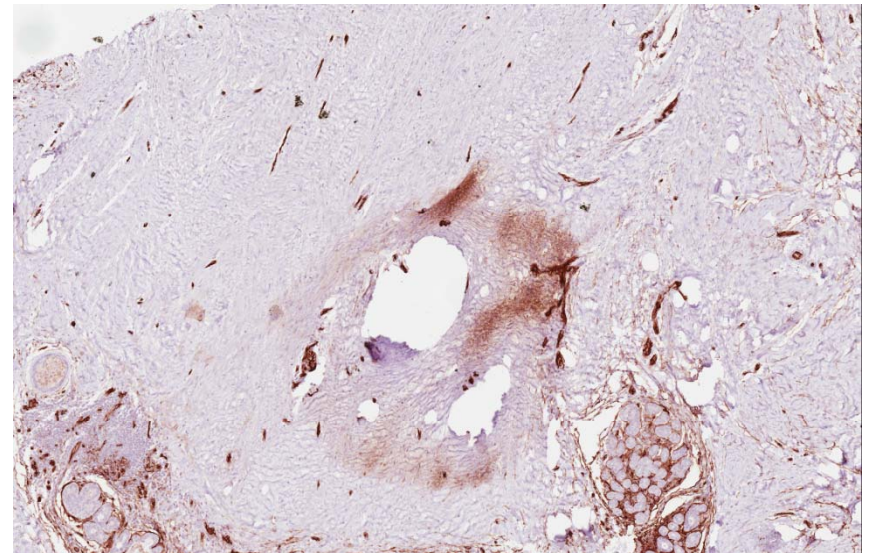
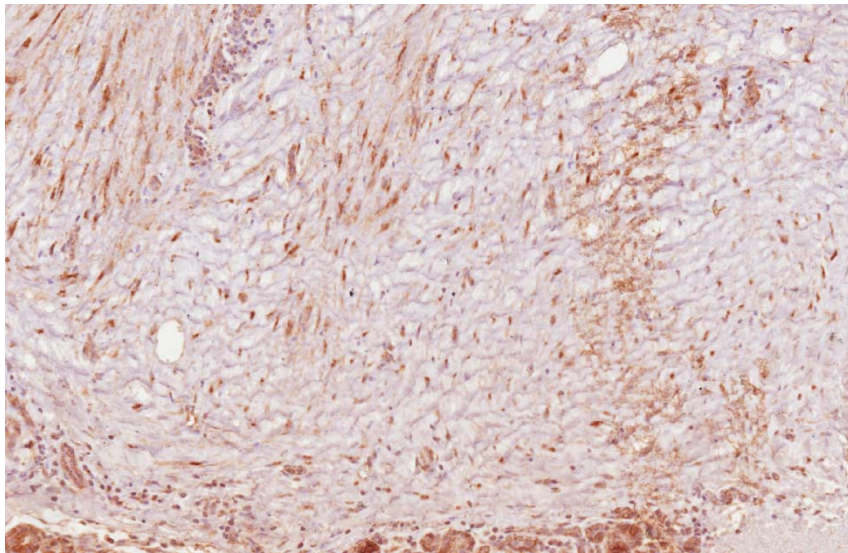


# Set D.4



**Beta catenin**

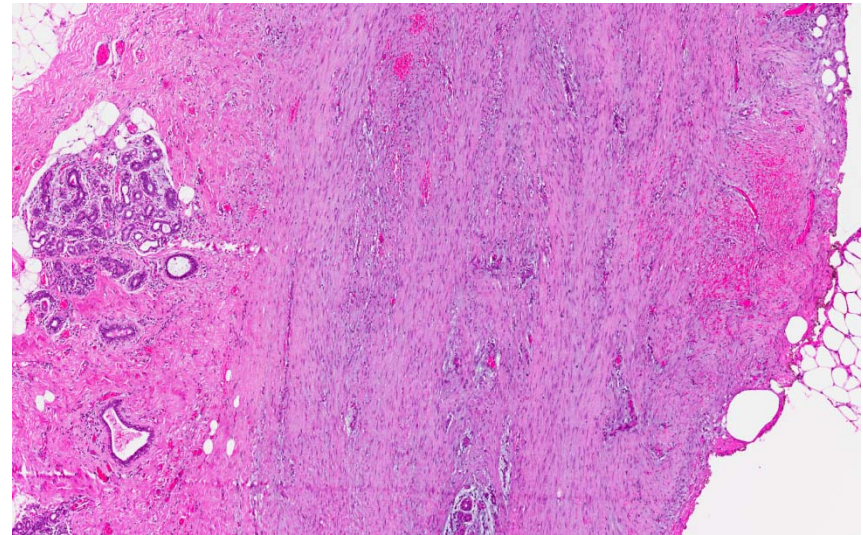
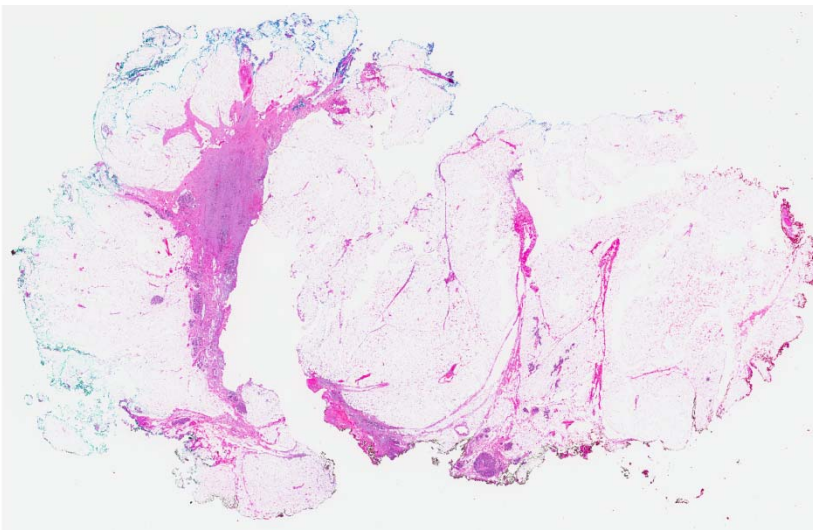
**CD34**



- Fibromatosis-like lesion on core biopsy.
- Recommendation for complete excision.

# Set D.4

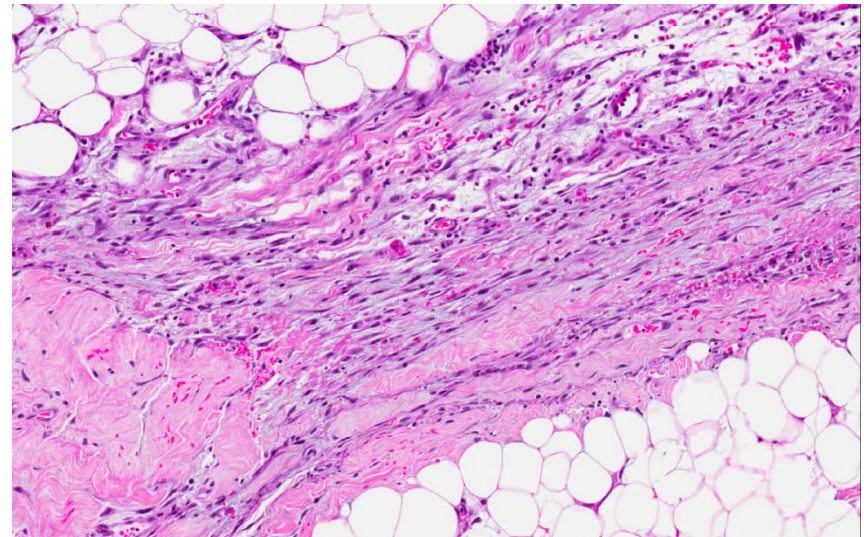
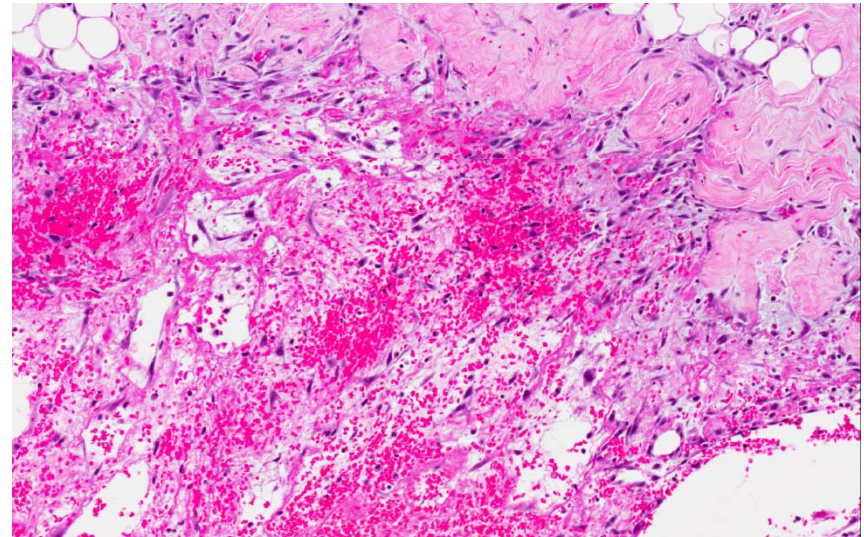
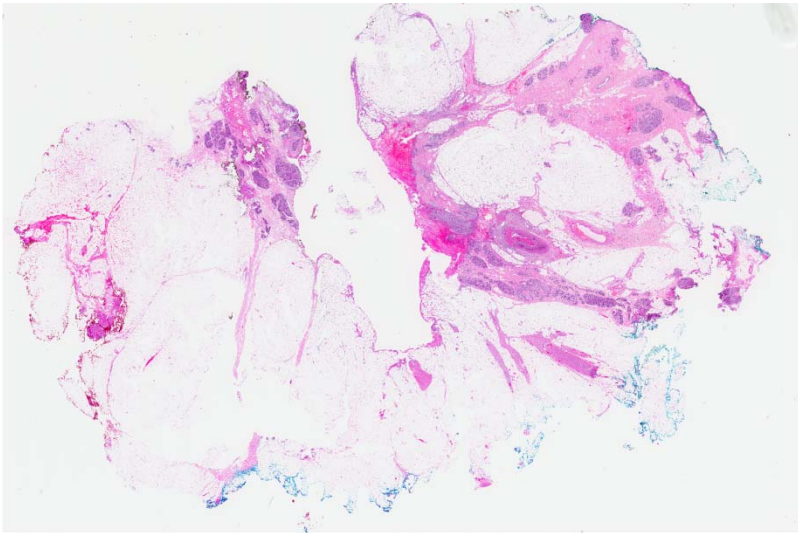
## Excision biopsy





# Set D.4

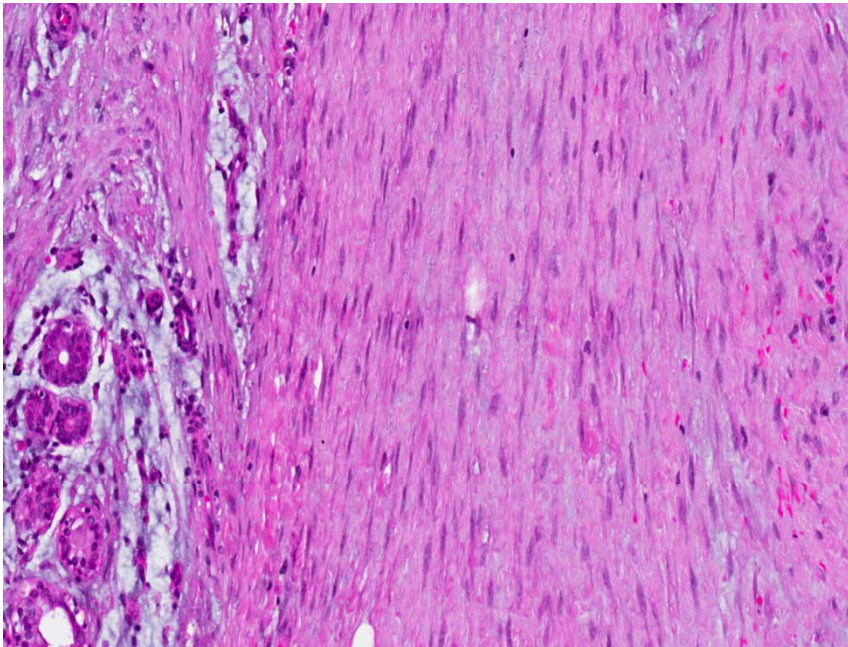
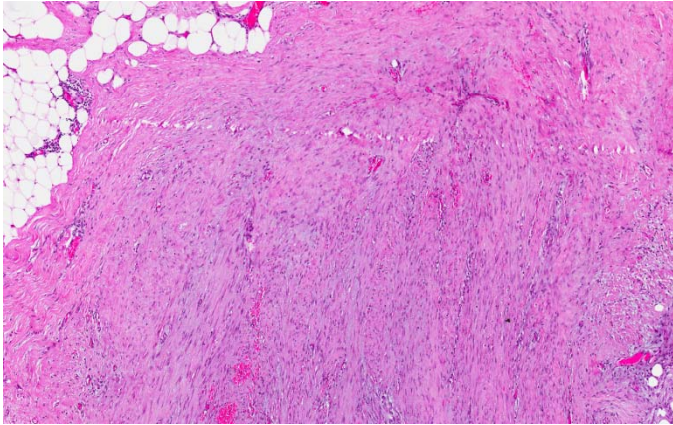
**Excision – biopsy site**



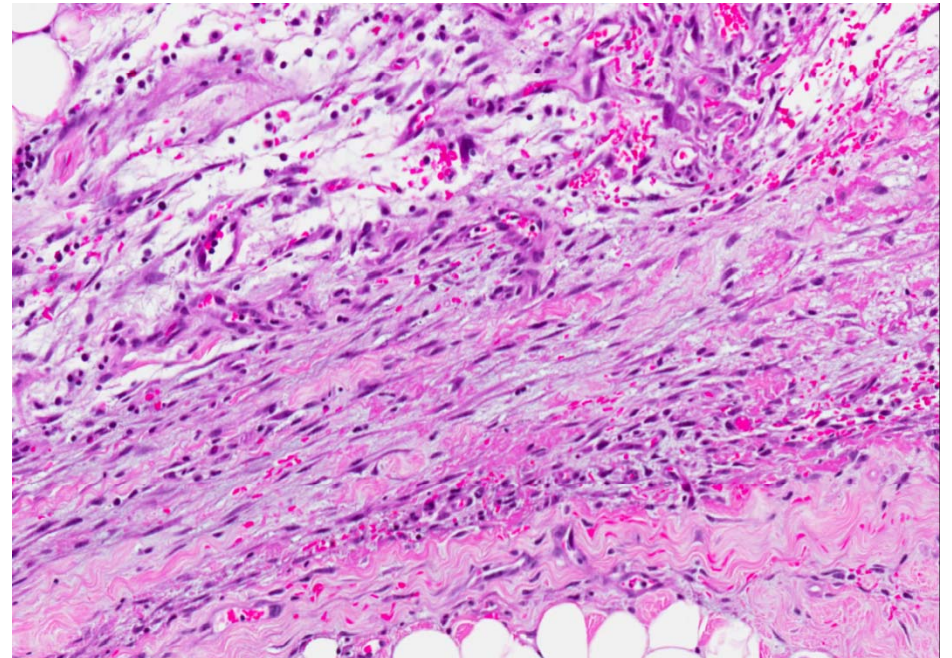
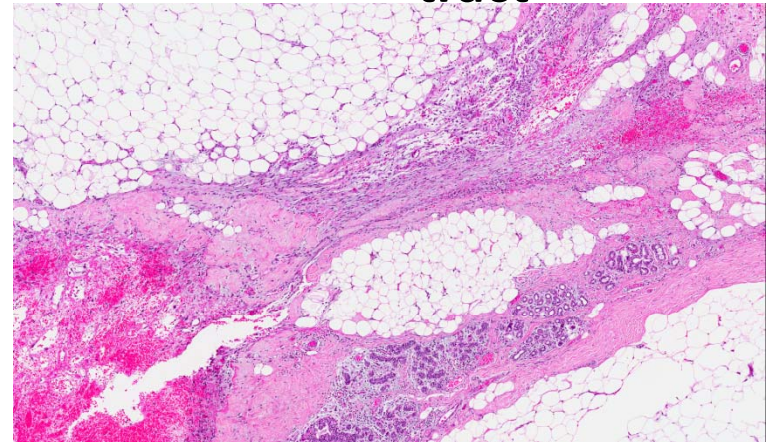


# Set D.4

**Fibromatosis**



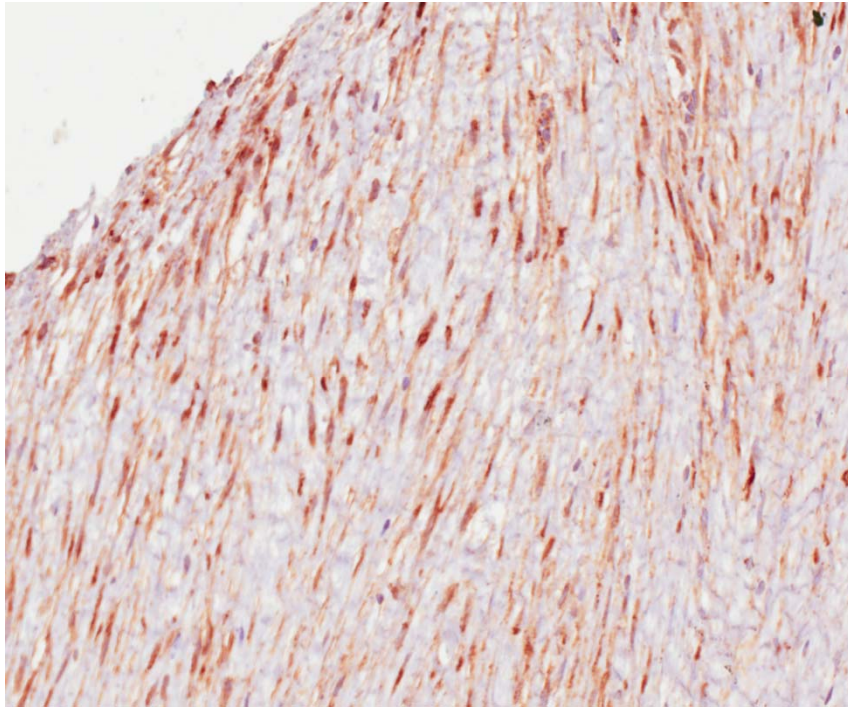
**Biopsy tract**





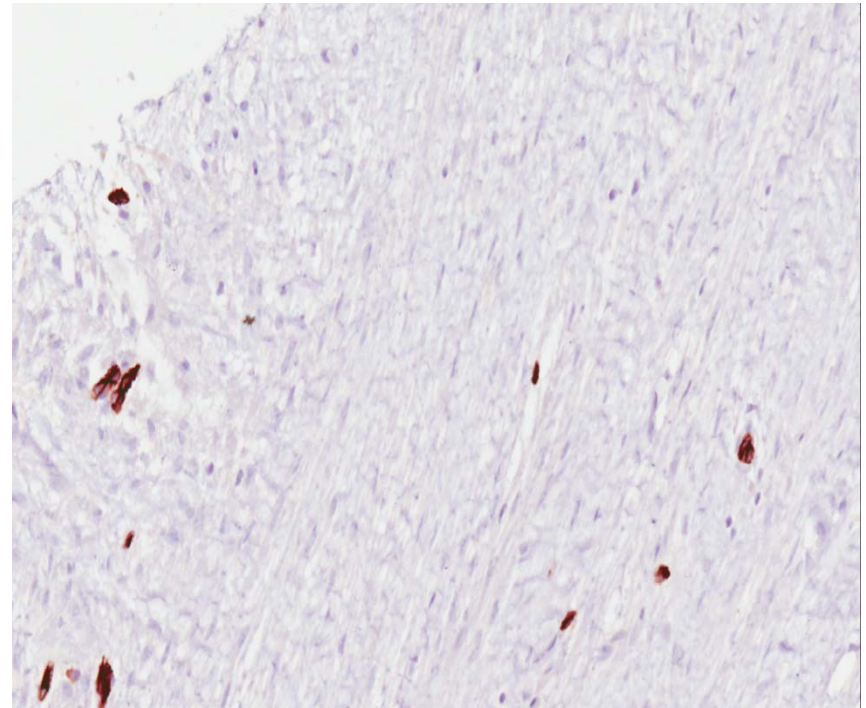
# Set D.4

**Beta catenin**



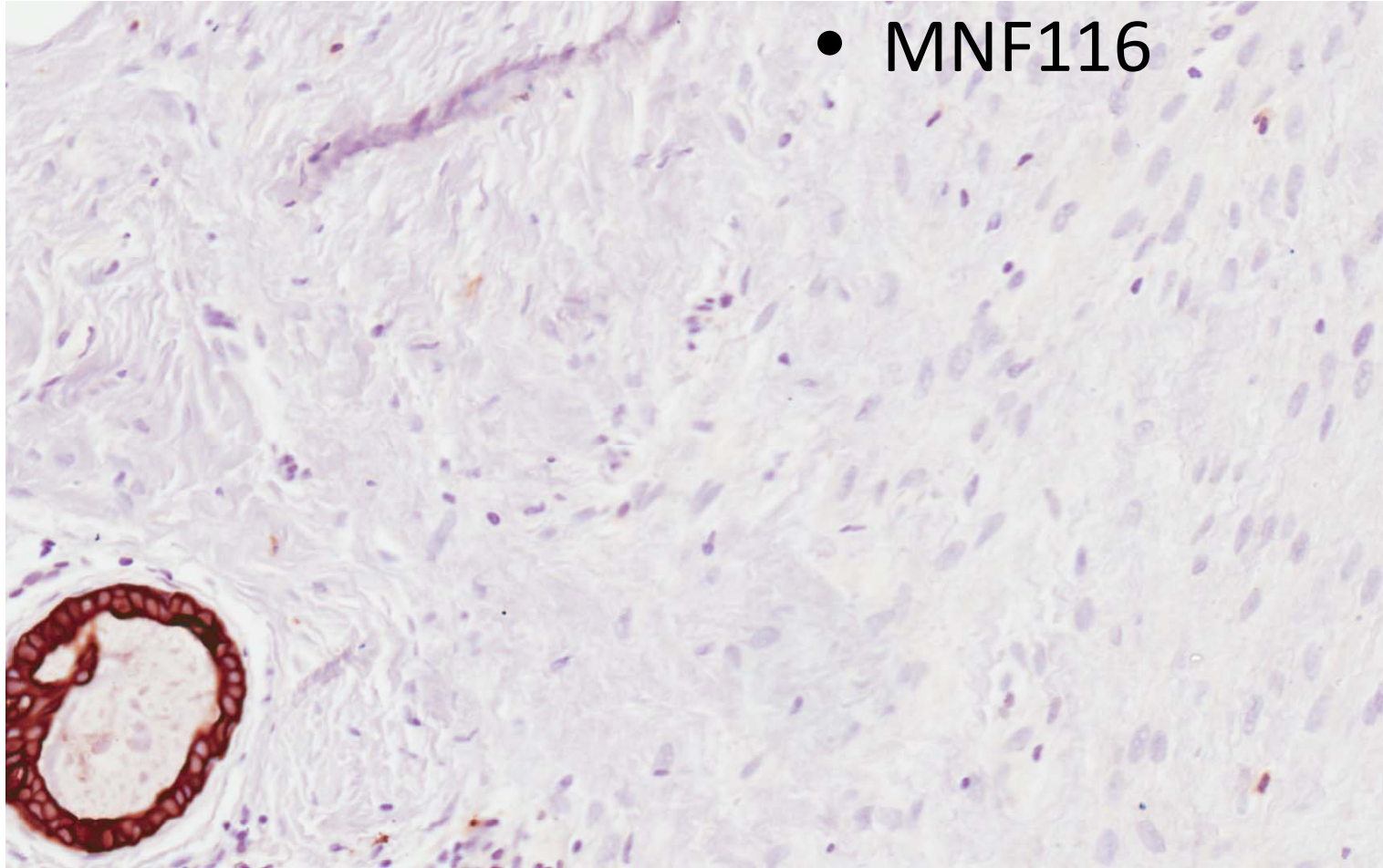
Nuclear and cytoplasmic  
staining

**CD34**



# Set D.4

- MNF116





- Fibromatosis of the breast

# Low grade spindle cell breast lesions

| Antibody     | Fibromatosis | Benign/Borderline phyllodes tumour (stromal component) | Fibromatosis-like metaplastic carcinoma |
|--------------|--------------|--|---|
| Cytokeratins | -            | -  | +                                       |
| p63          | -            | -  | +                                       |
| CD10         | -            | ±  | +                                       |
| CD34         | -            | ±  | -                                       |
| β-catenin    | +            | ±  | ±                                       |
| bcl2         | -            | ±  | -                                       |
| S100         | -            | -/+  | +                                       |

Cytokeratin panel: AE1/3, Cam 5.2, MNF116, 34βE12, CK5, CK14, CK7, CK19, EMA



# Learning points

- Recognition of fibromatosis in the breast.
- Distinction from other spindle cell lesions, especially low grade fibromatosis-like spindle cell carcinoma.
- Exclusion of prior instrumentation and distinguishing from scar.
- Immunohistochemical profile of fibromatosis.