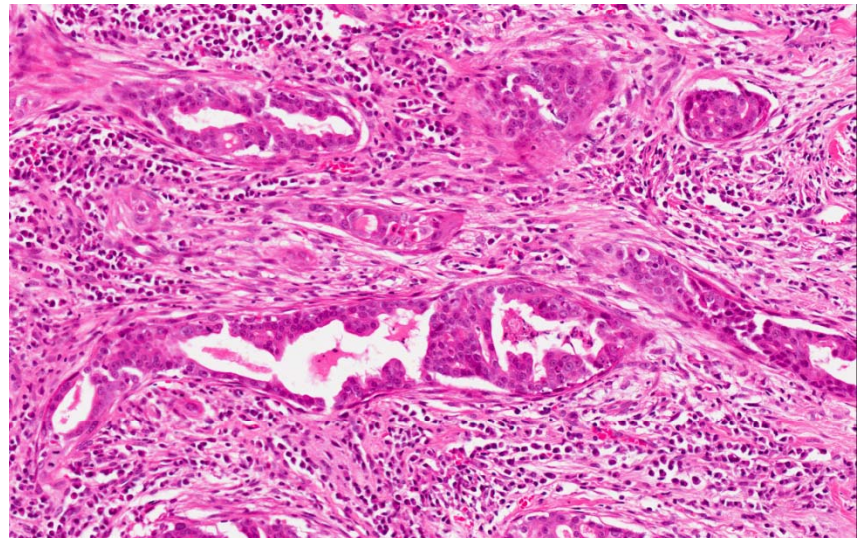
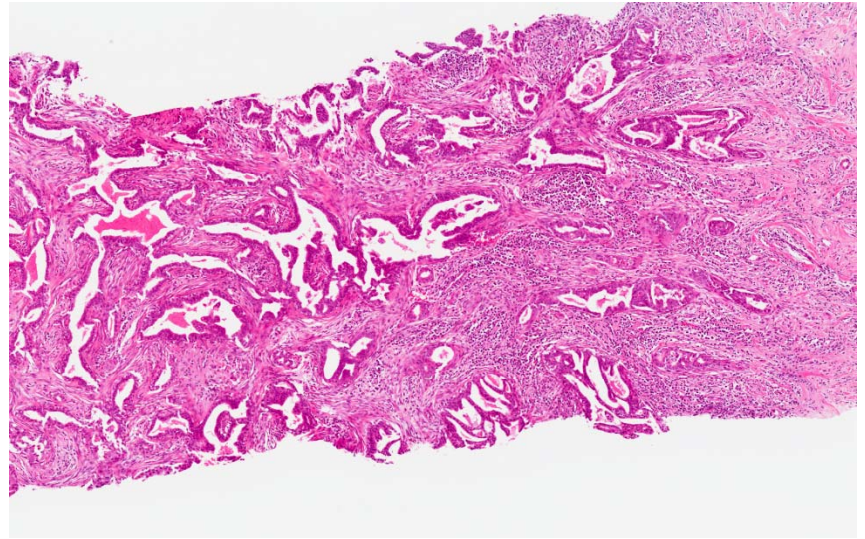
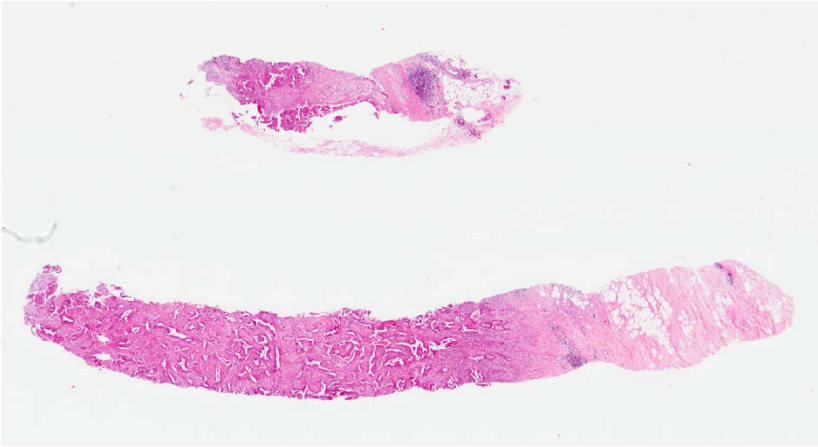


Set D.16

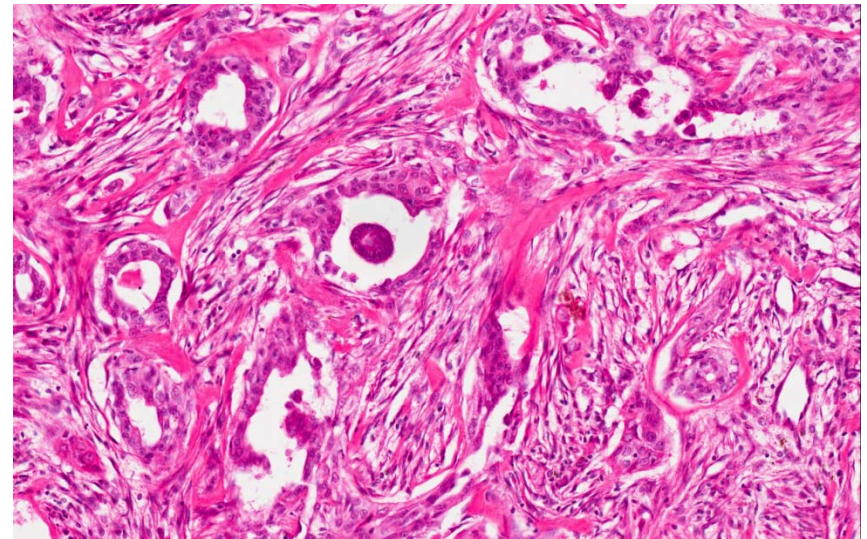
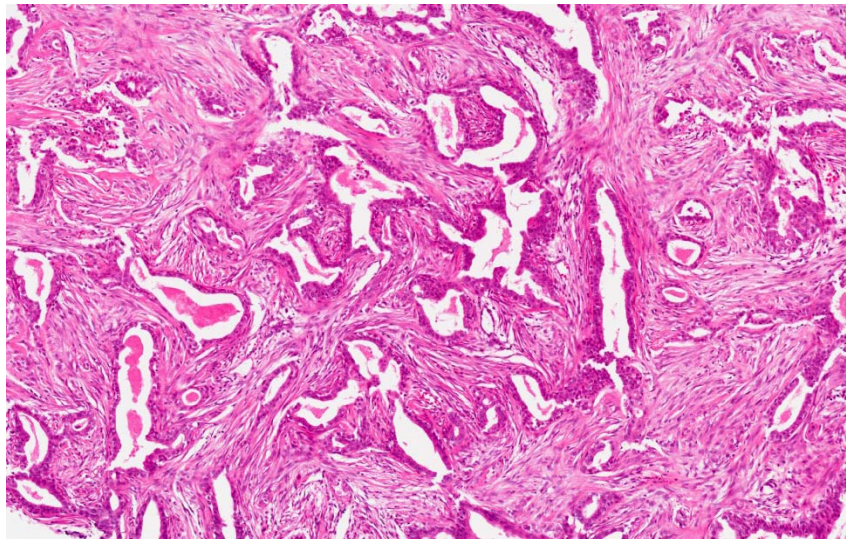
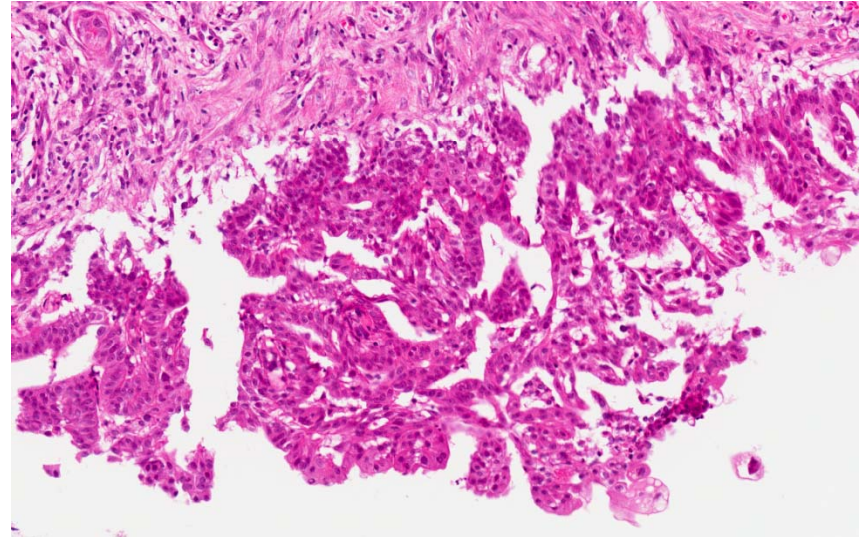
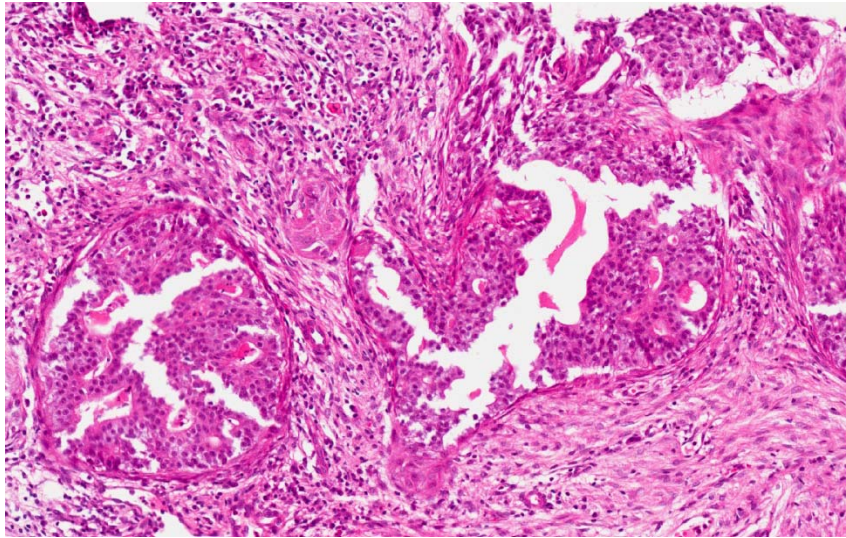
- 77 year old Japanese lady presented with a palpable mass in the upper outer quadrant of the right breast.
- Ultrasonography showed a 2.9x1.0 cm mass with cystic echoes.
- Mammography revealed a mass with distinct margins.
- A core biopsy (3A) followed by a resection (3B) were performed.

(contributed by Dr Rin Yamaguchi)

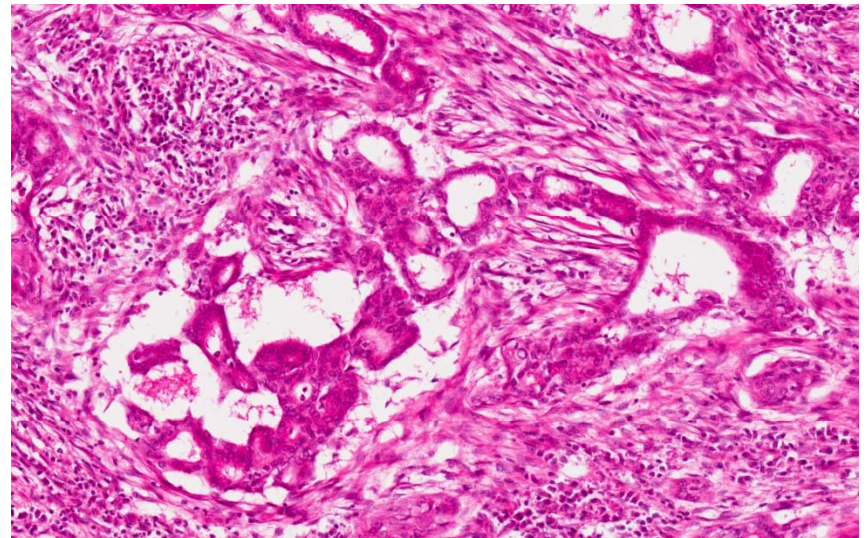
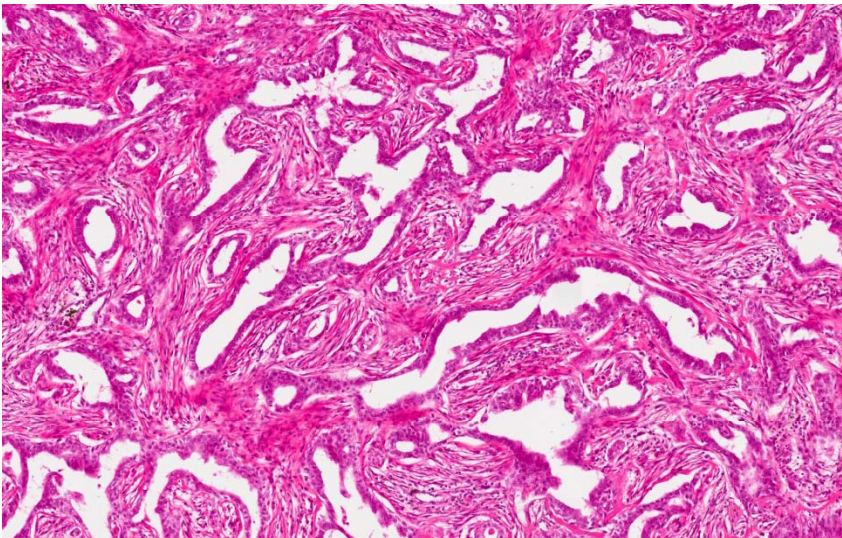
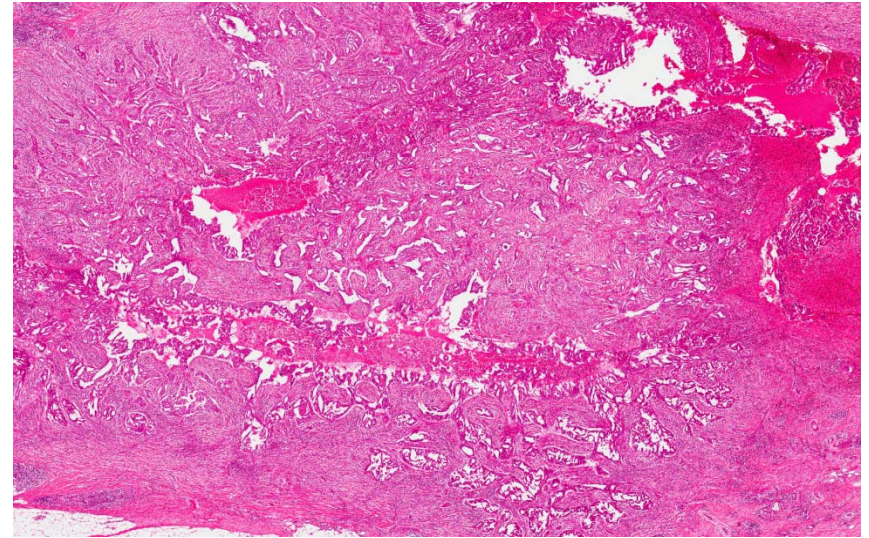
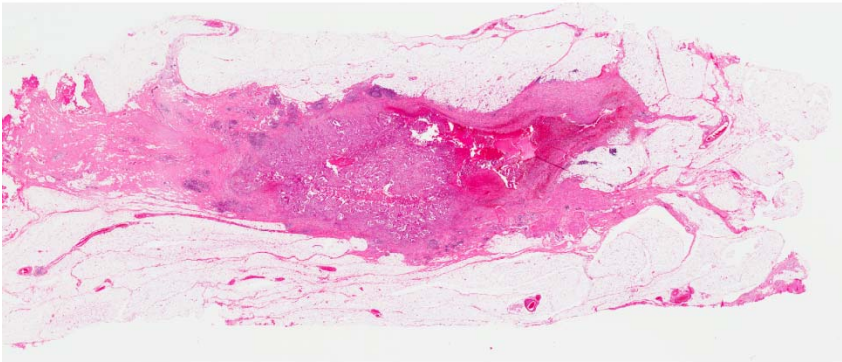
Set D.16



Set D.16



Set D.16



Set D.16

