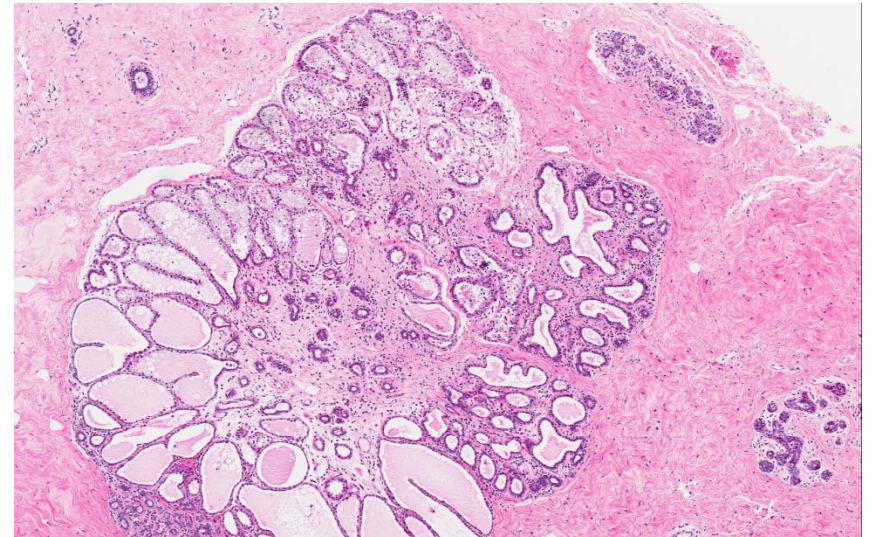
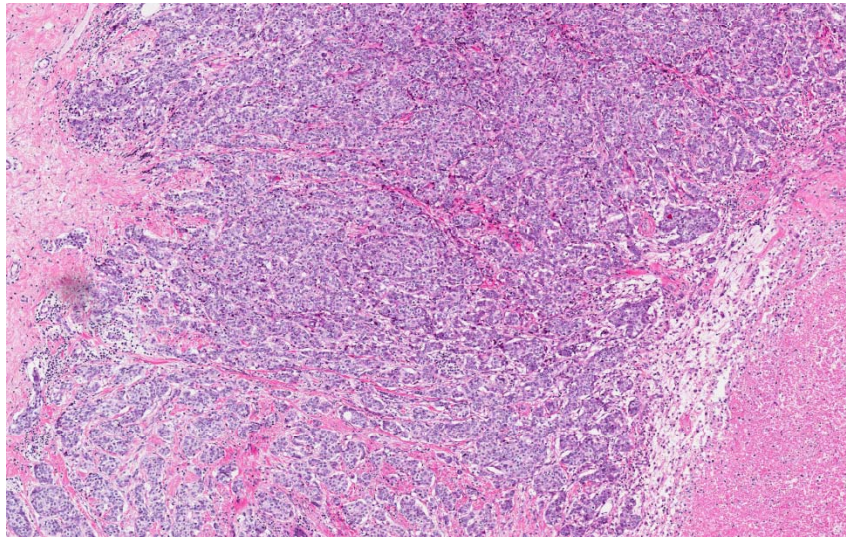
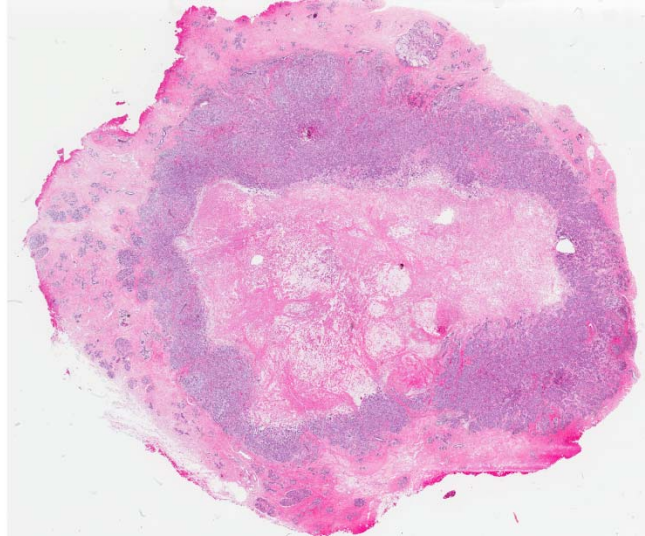


Set D.15

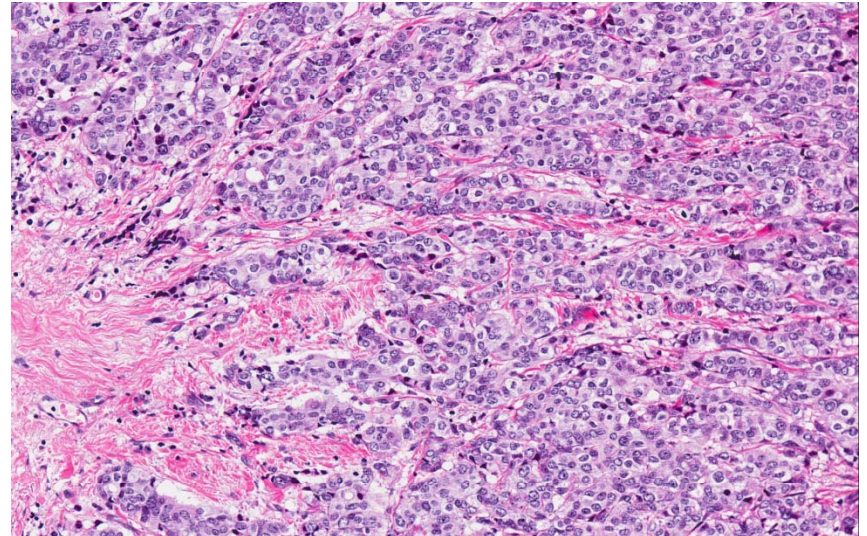
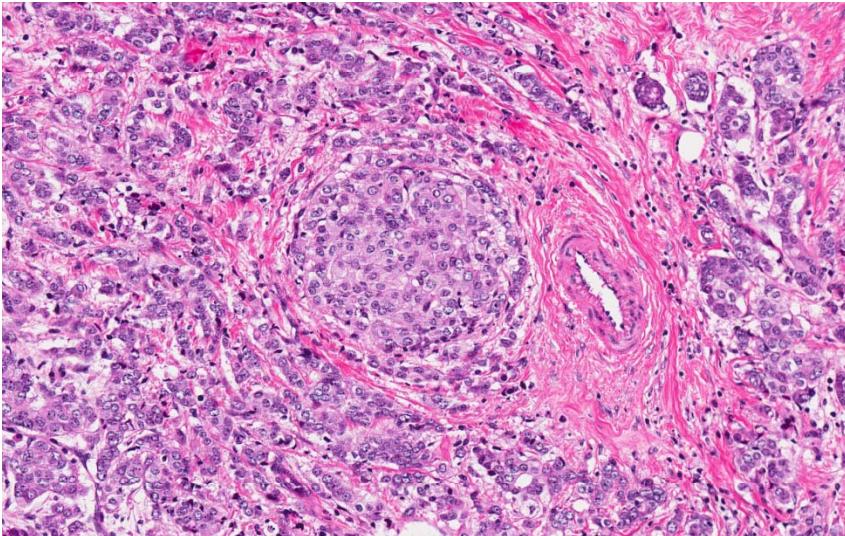
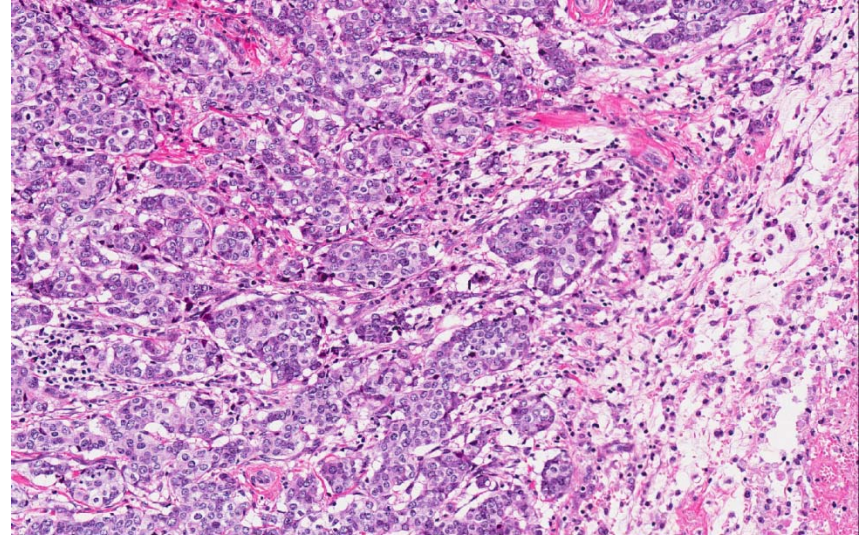
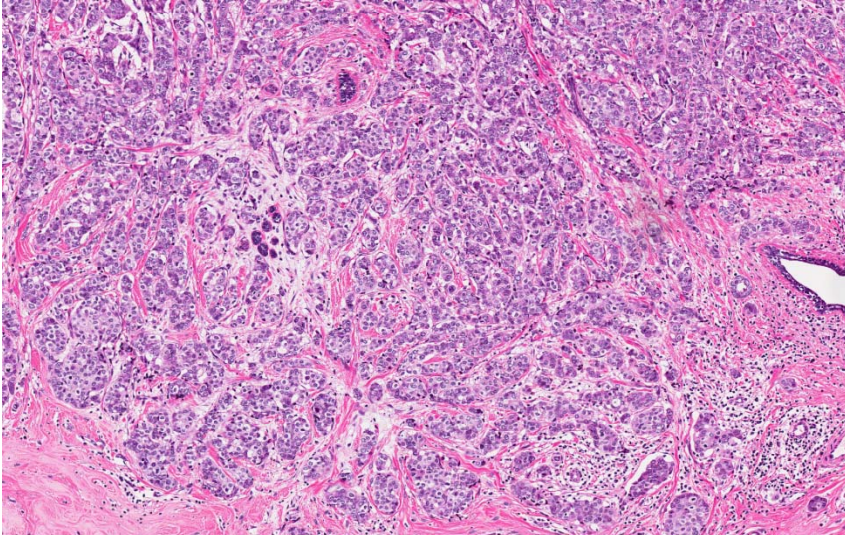
- 36 year old Japanese lady presented with a palpable lump in the upper outer quadrant of the breast.
- Ultrasound studies showed a 3 cm hypoechoic mass with a radiological consideration of fibroadenoma.

(contributed by Dr Rin Yamaguchi)

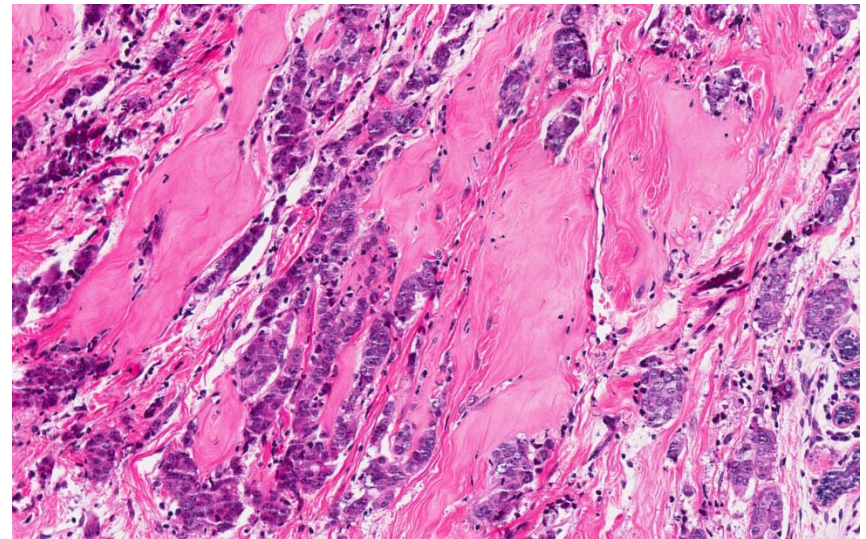
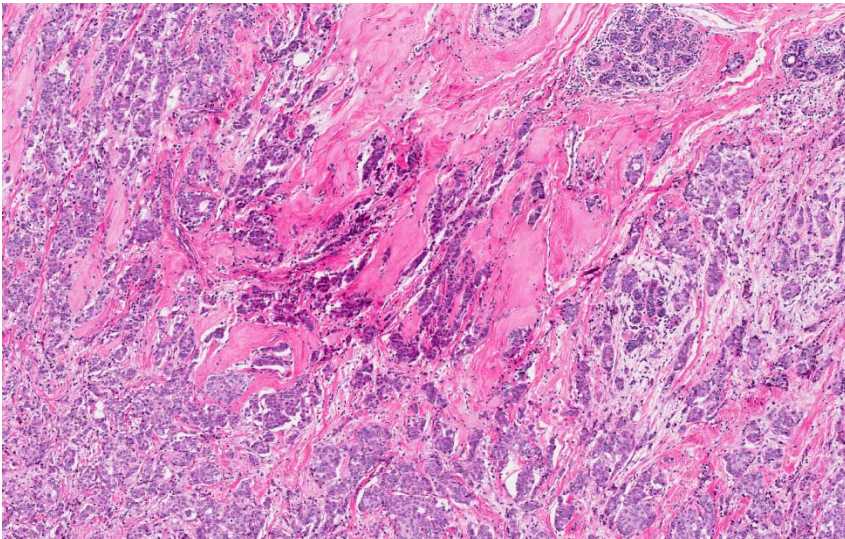
Set D.15



Set D.15



Set D.15



Set D.15

