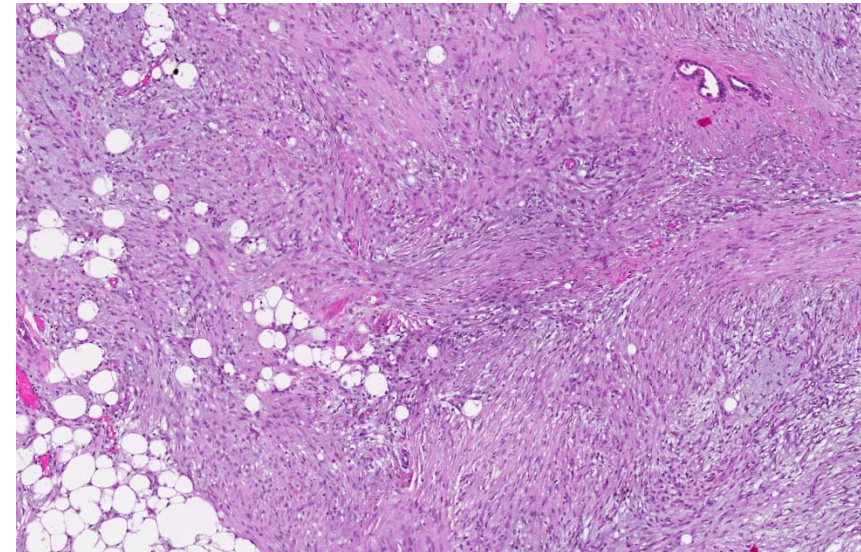
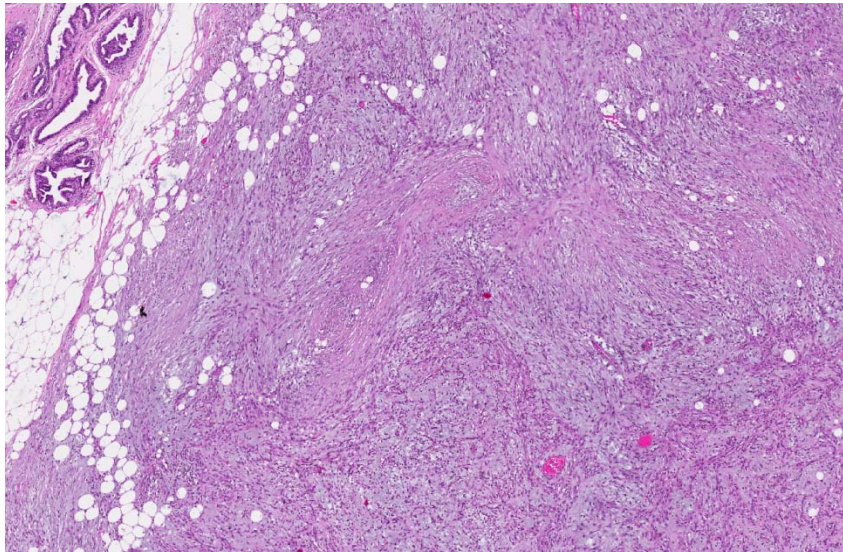
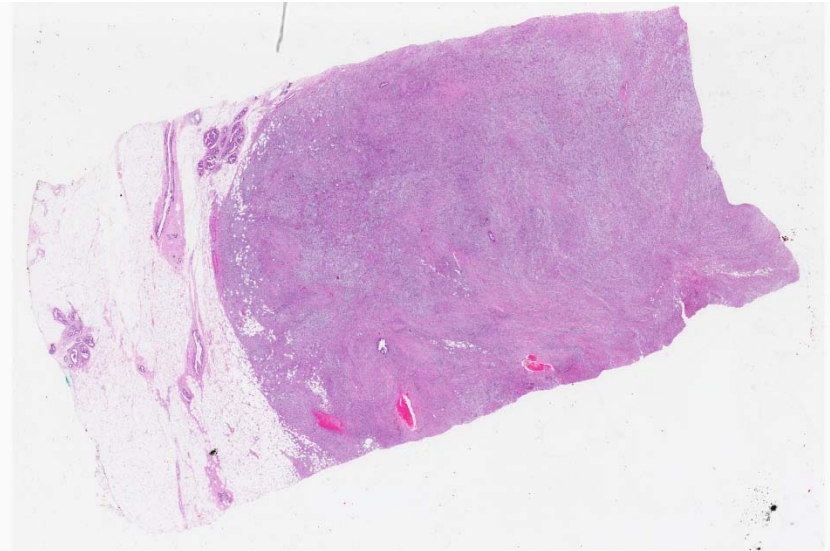


Set D.14

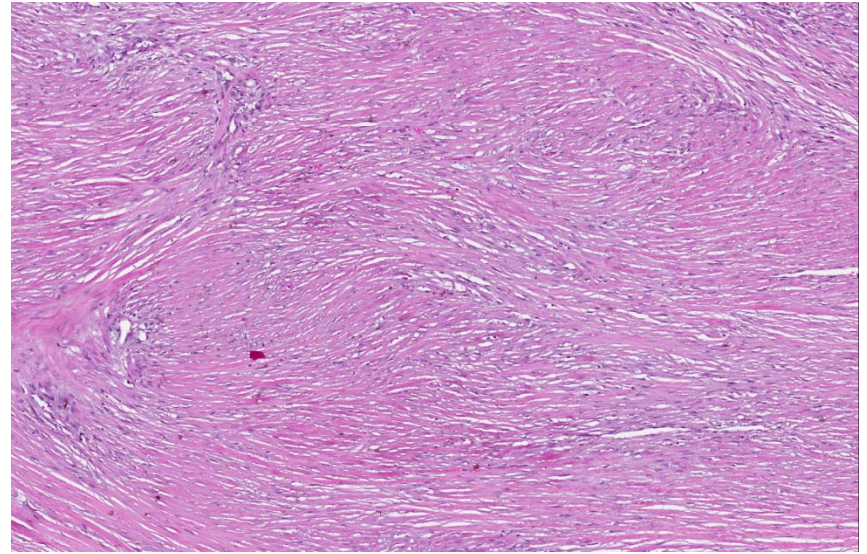
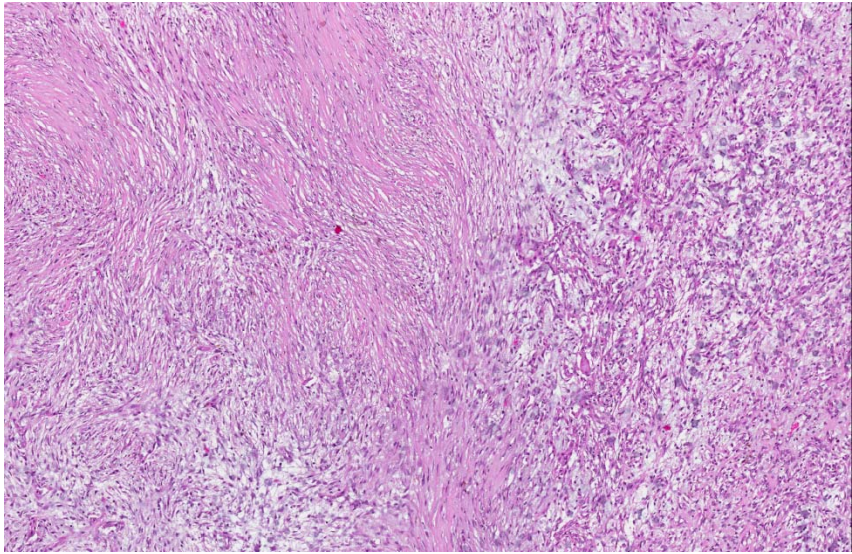
- 68 yr old Chinese female presented with a left breast lump, clinically assessed as 6cm in size.
- A trucut biopsy was reported as a phyllodes tumour.
- The patient opted for a simple mastectomy.
- The left mastectomy specimen contained a centrally located, relatively circumscribed, oval, whitish firm mass.



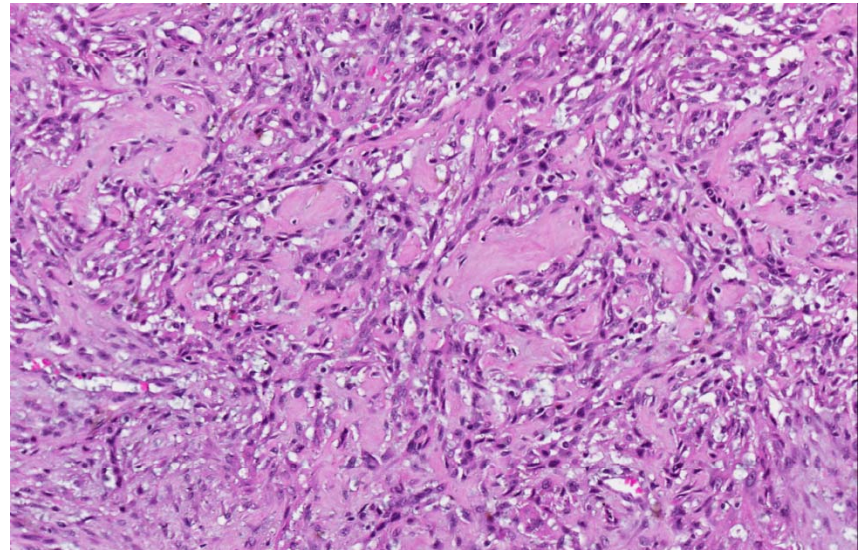
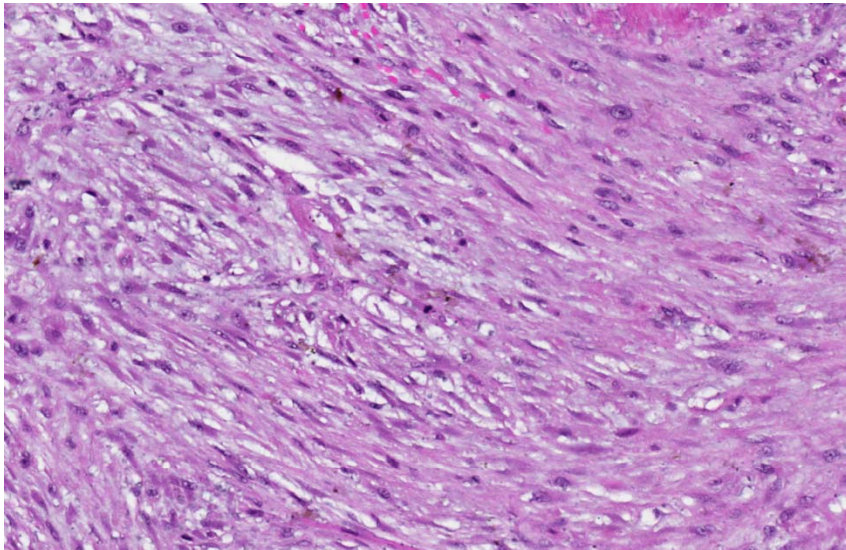
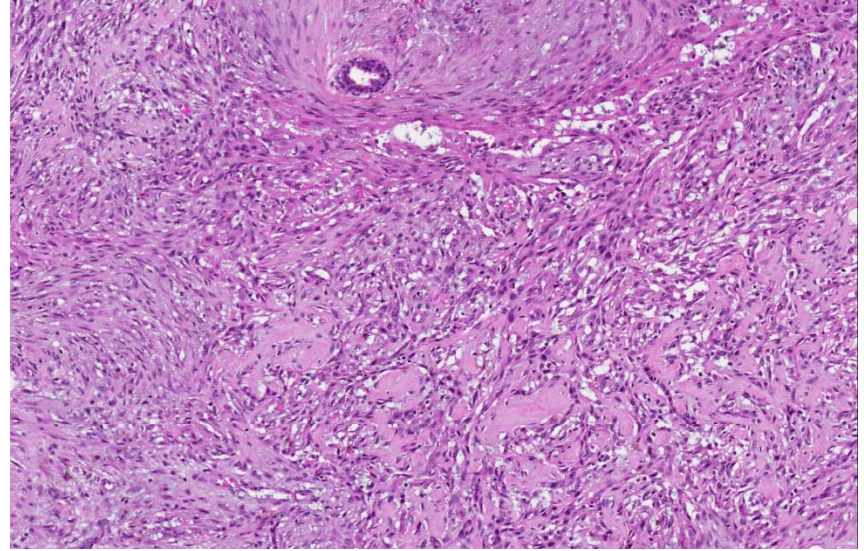
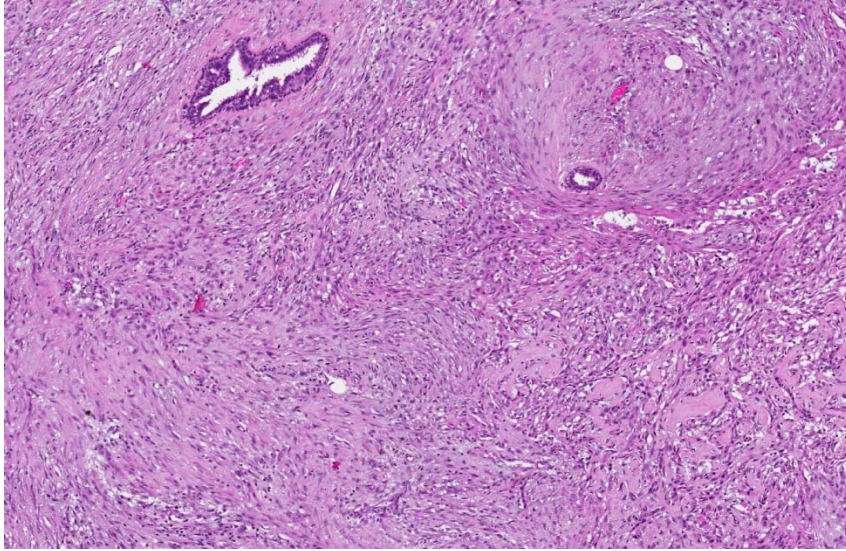
Set D.14



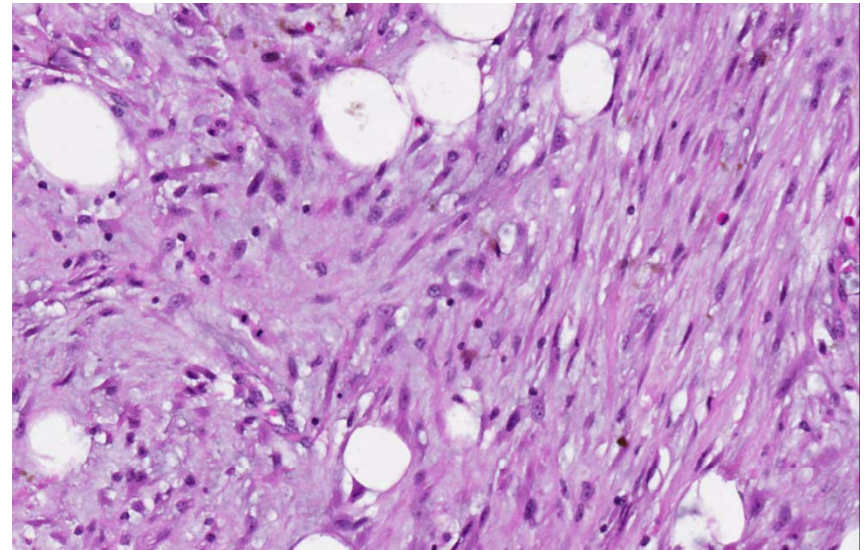
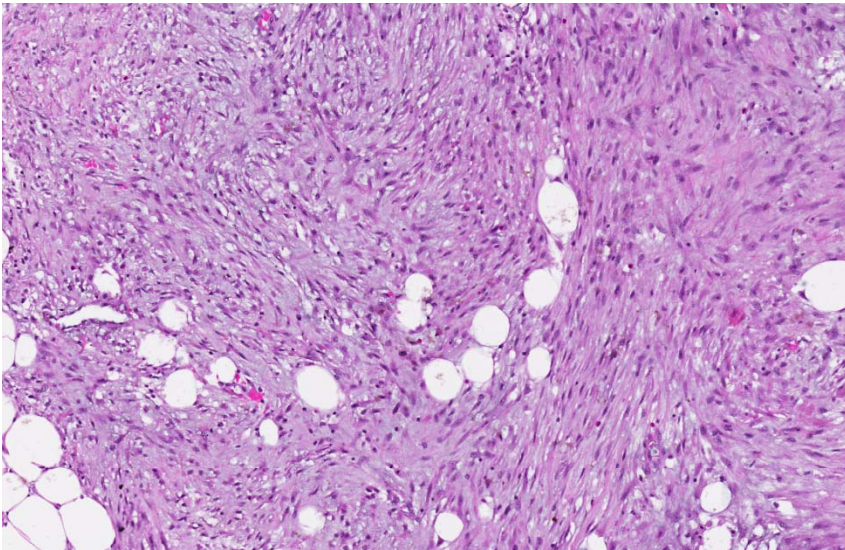
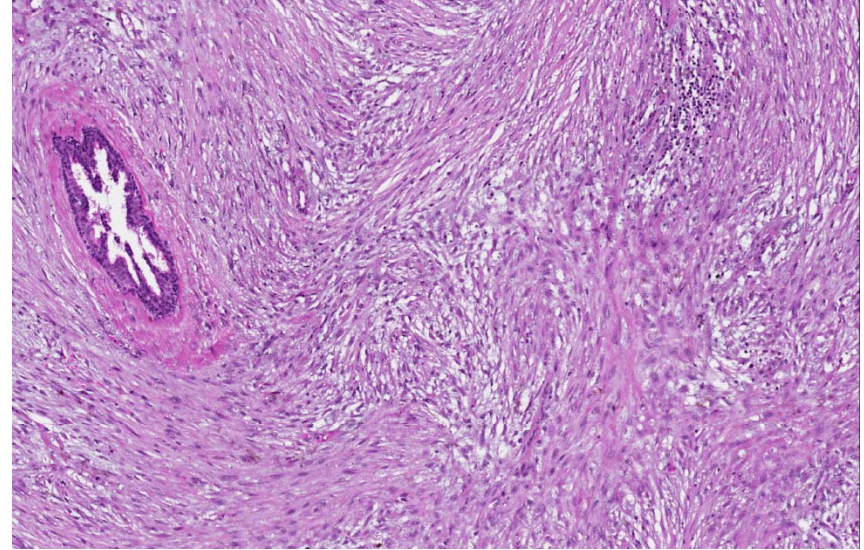
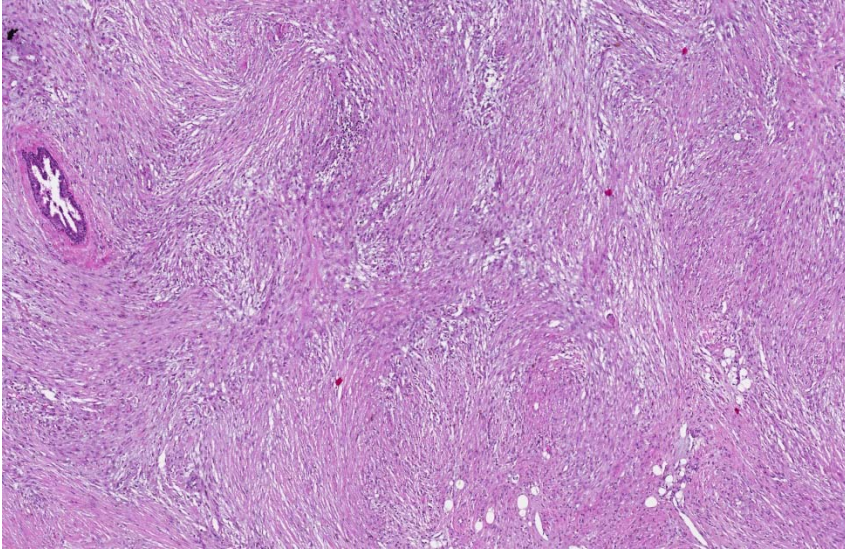
Set D.14



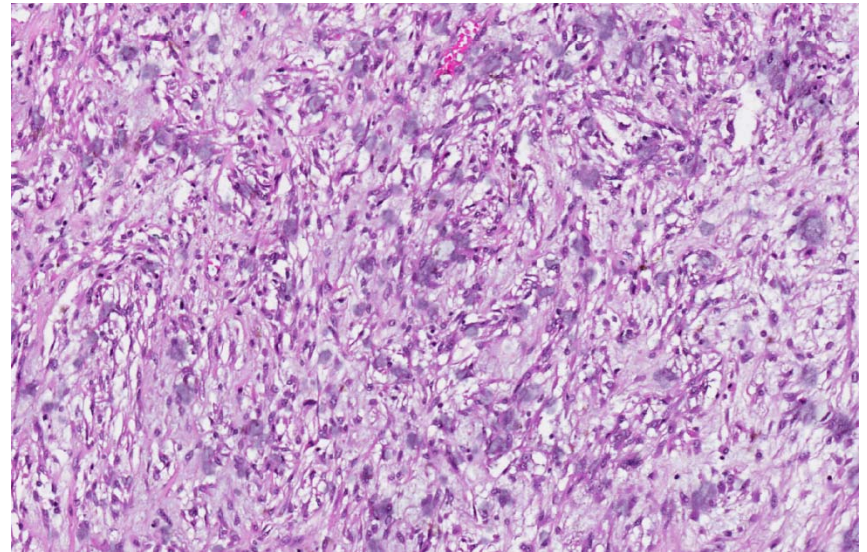
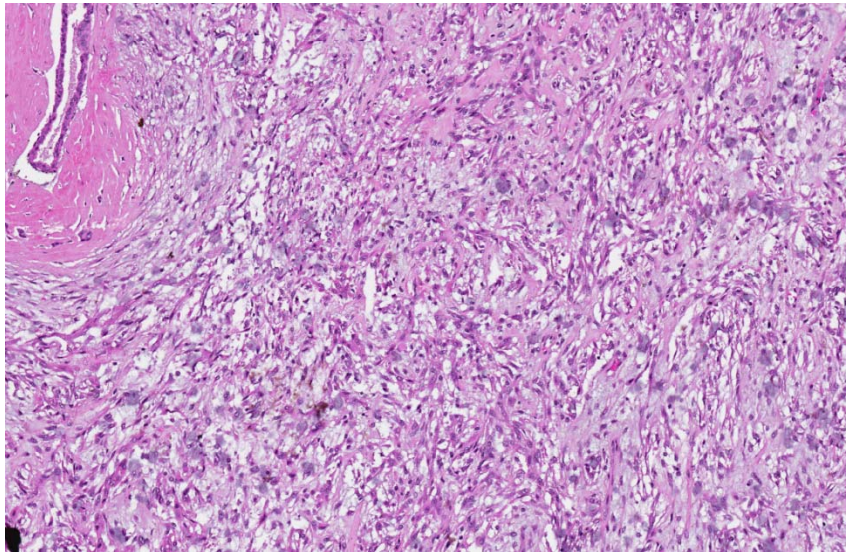
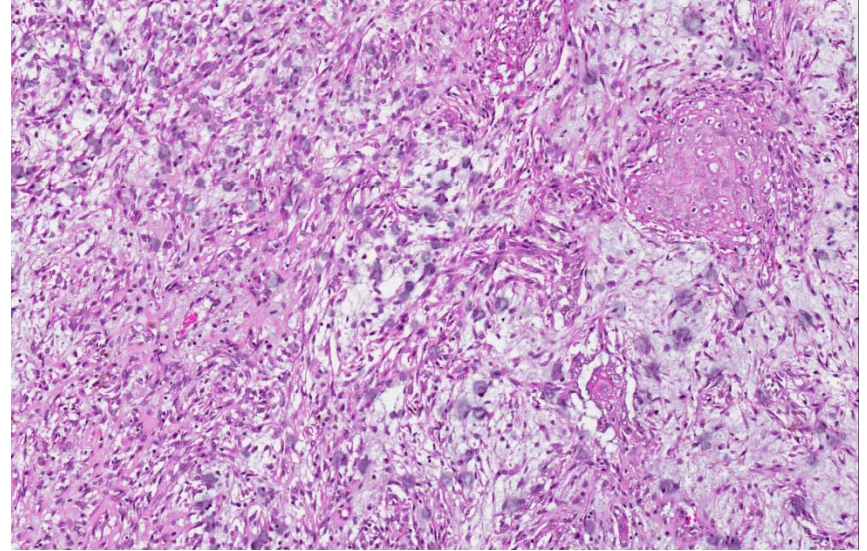
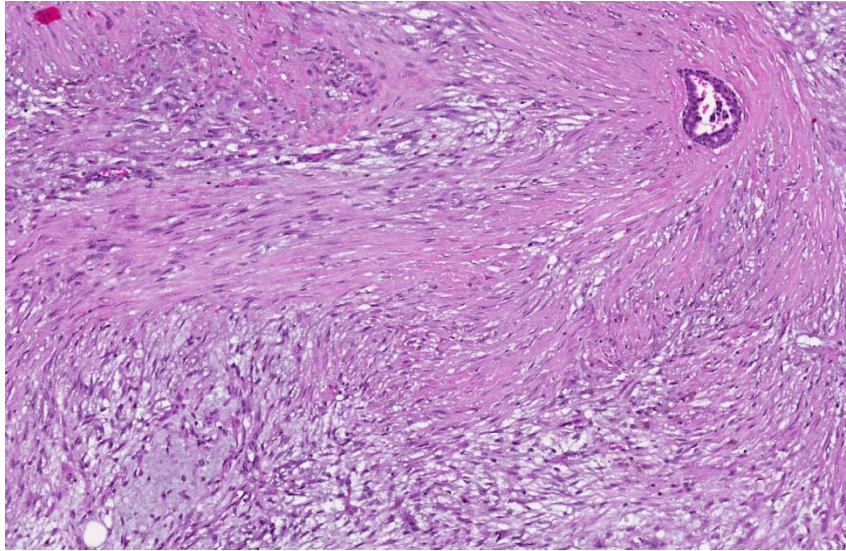
Set D.14



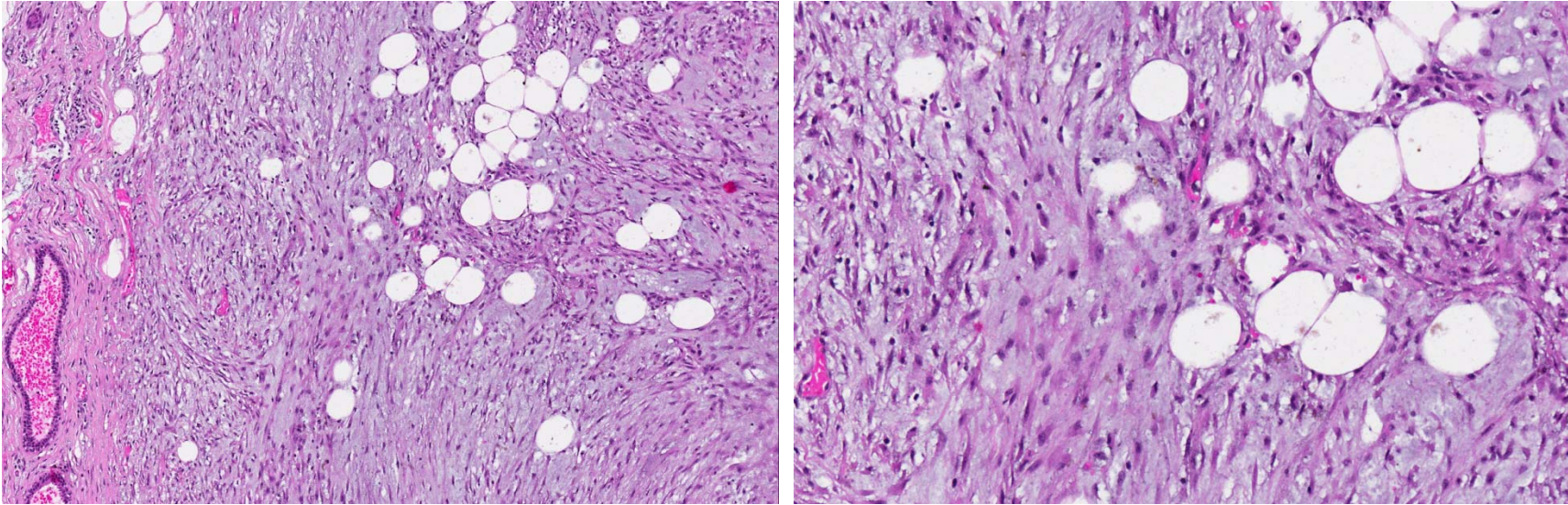
Set D.14



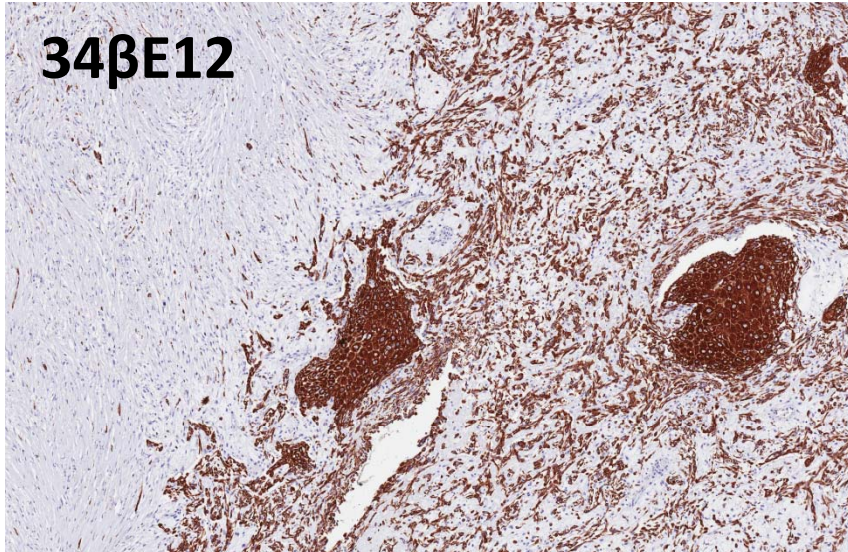
Set D.14



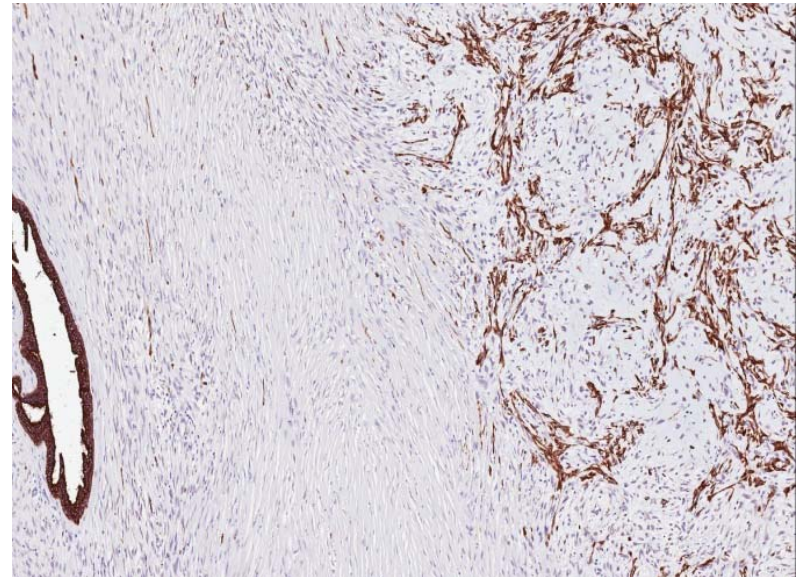
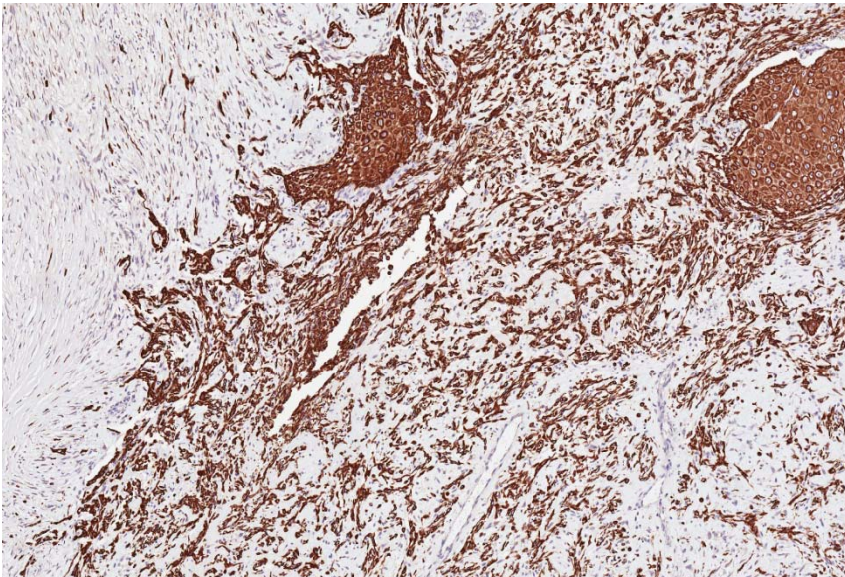
Set D.14



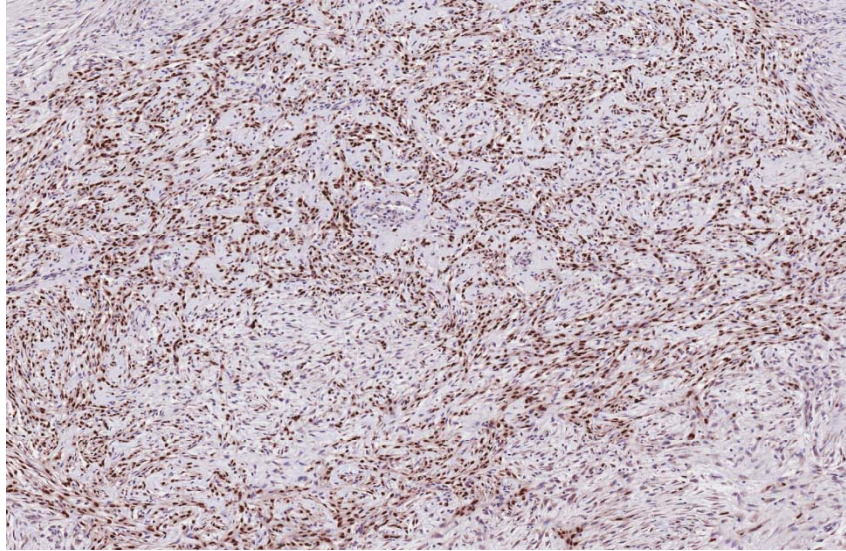
Set D.14



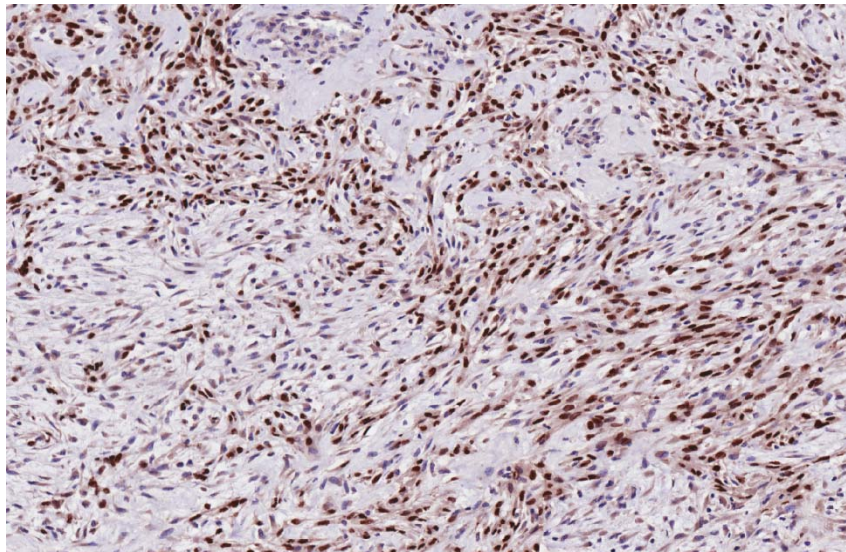
MNF116



Set D.14



p63



- Spindle cell metaplastic carcinoma

Key histological findings

- Spindle cell proliferation.
- Focal squamoid epithelial nests merging into the spindle cells.
- Areas of clustering of spindle cells.
- Spindle cells appearing plump, with nuclear vesicularity and mitoses.
- Sparse entrapped ducts that do not show clefting or fronds.

Learning points

- Distinction of phyllodes tumour from spindle cell metaplastic carcinoma.
- Antibody panel to be used.
- Pitfalls in core biopsy diagnosis of spindle cell tumours.