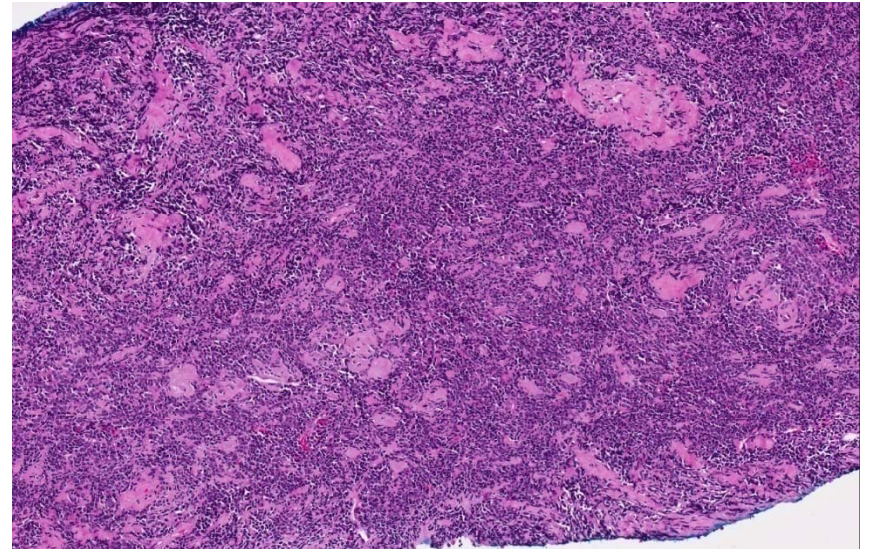
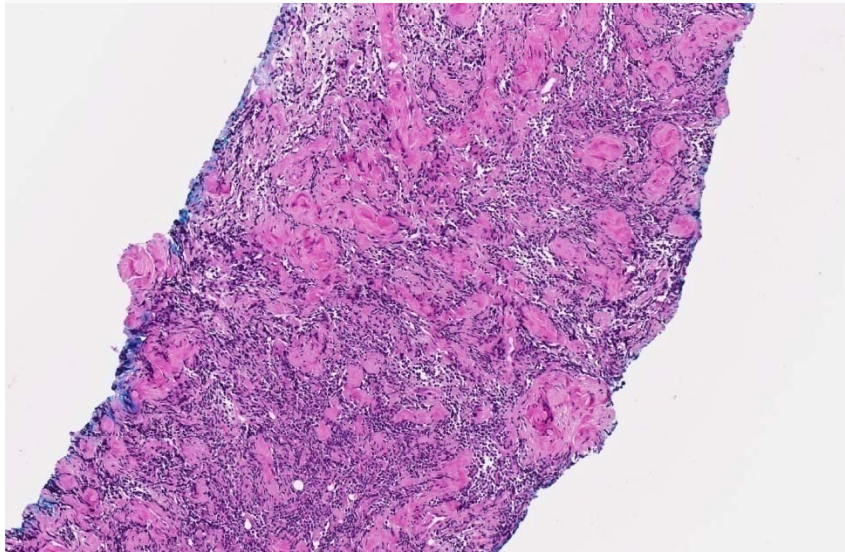
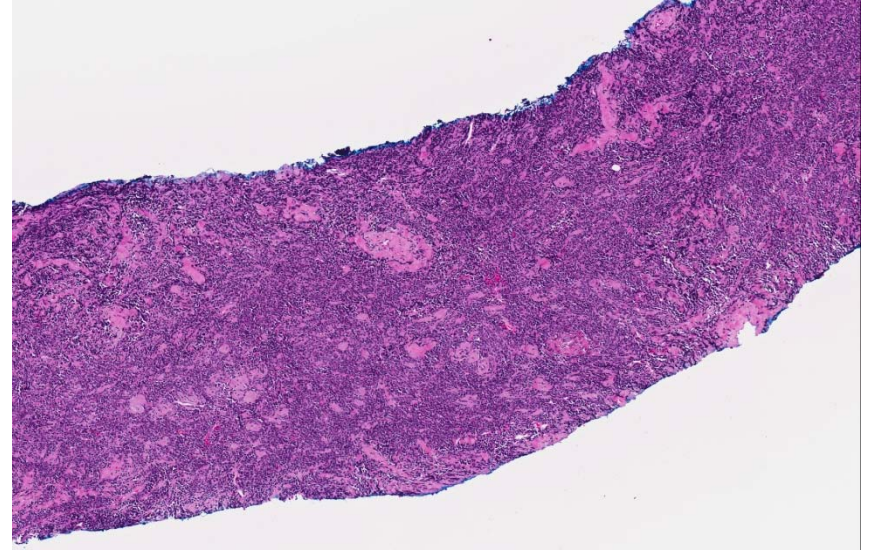
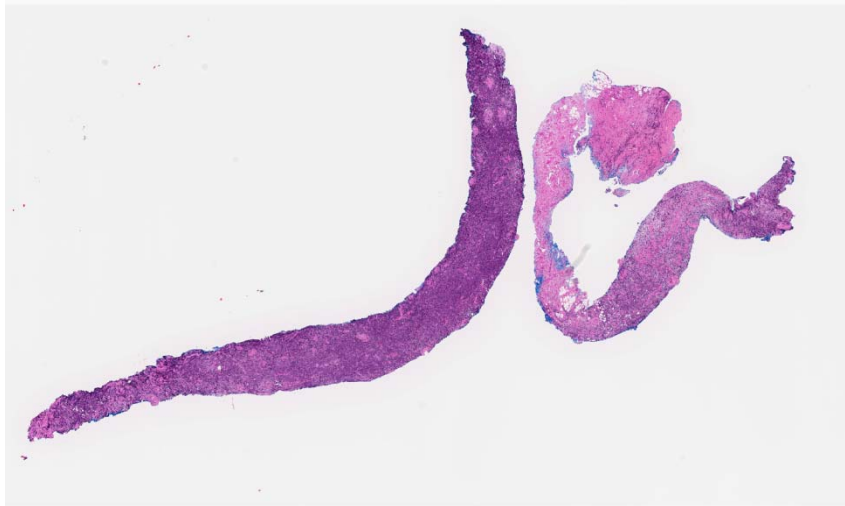


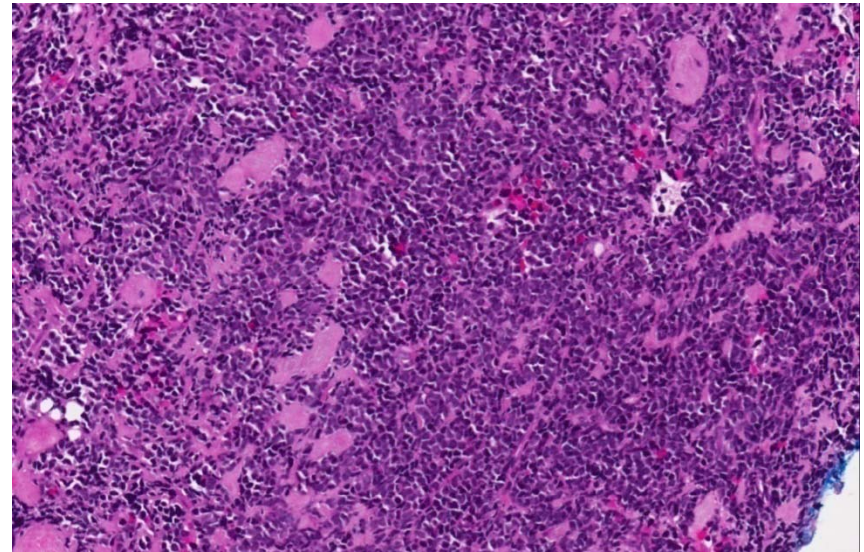
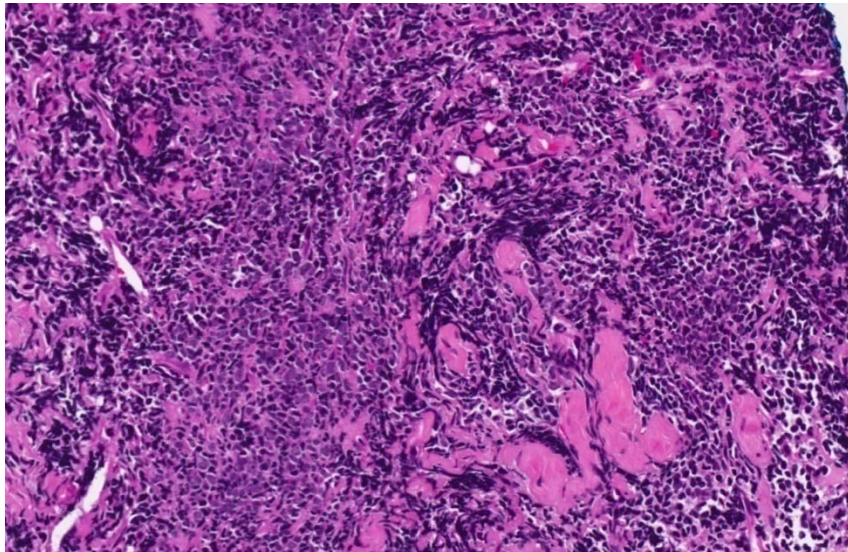
Set D.11

- 57 year old Chinese female presented with a left breast mass.
- A trucut biopsy was performed.

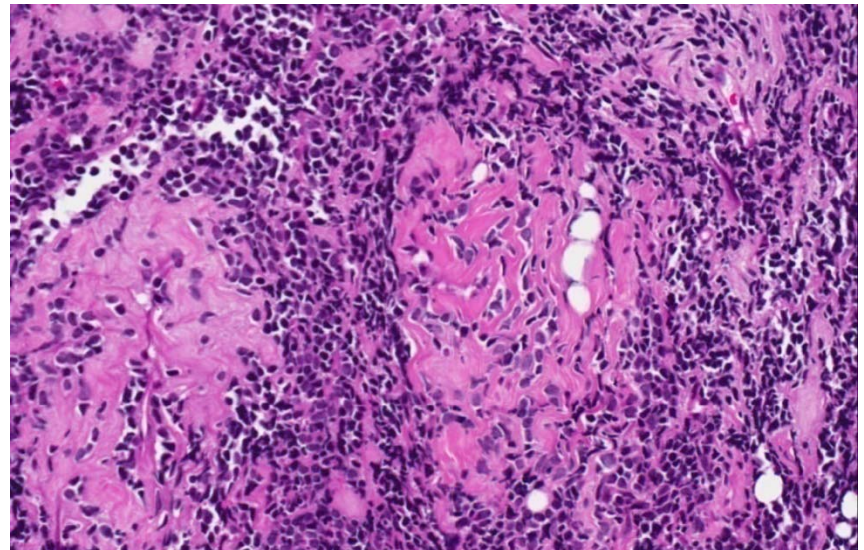
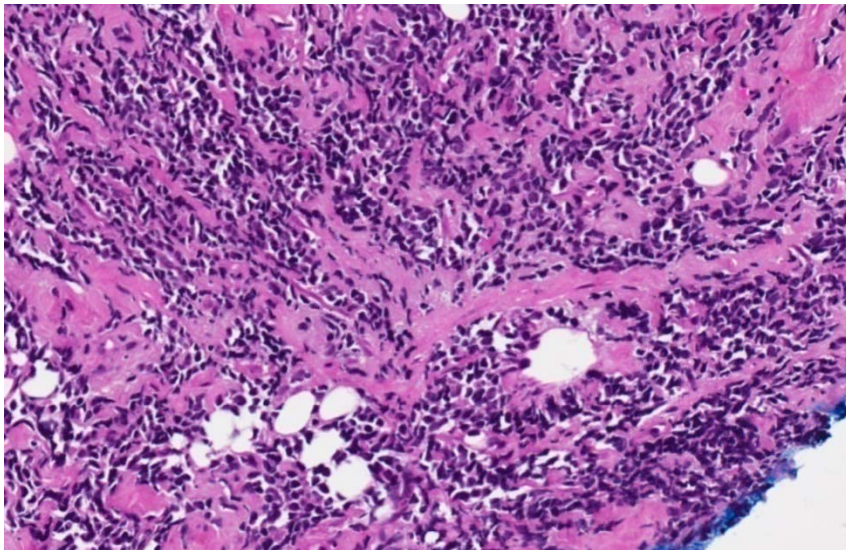
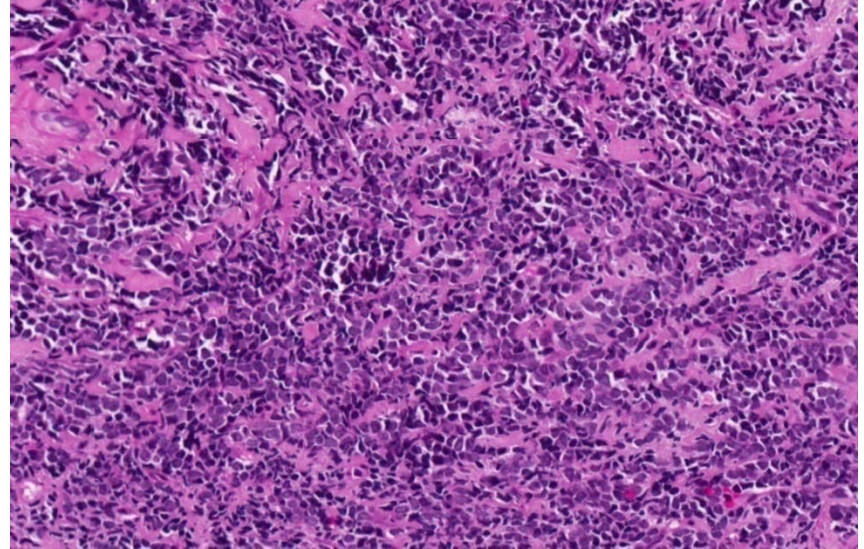
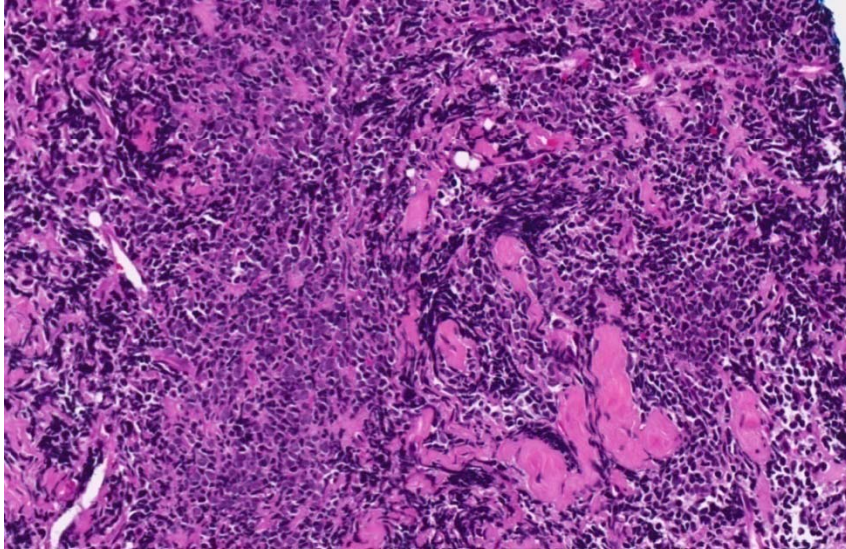
Set D.11



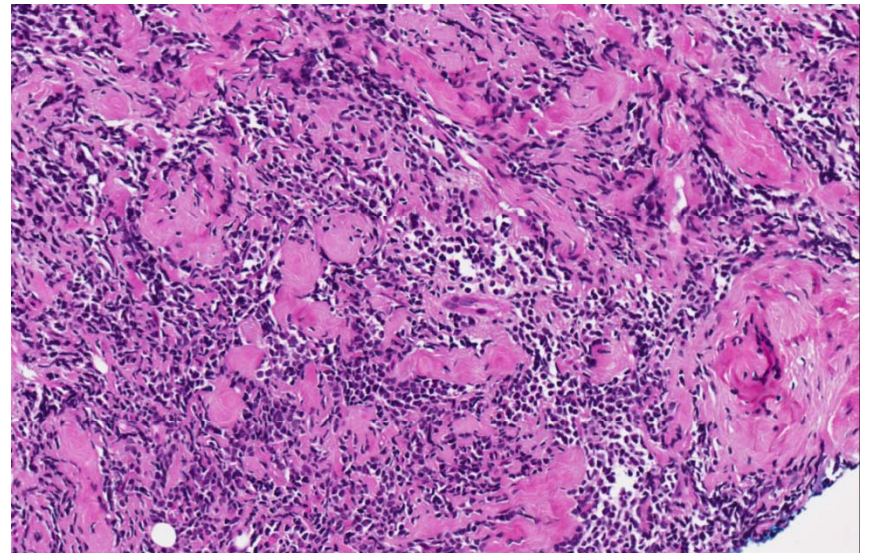
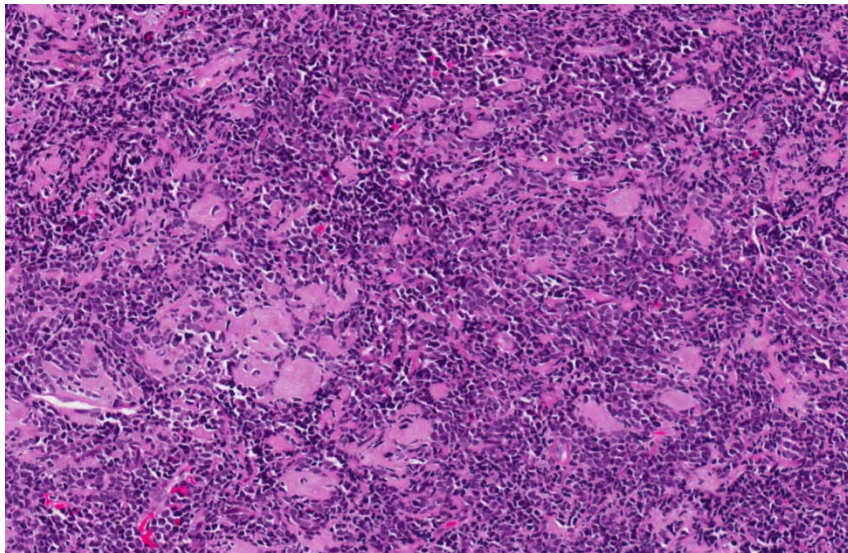
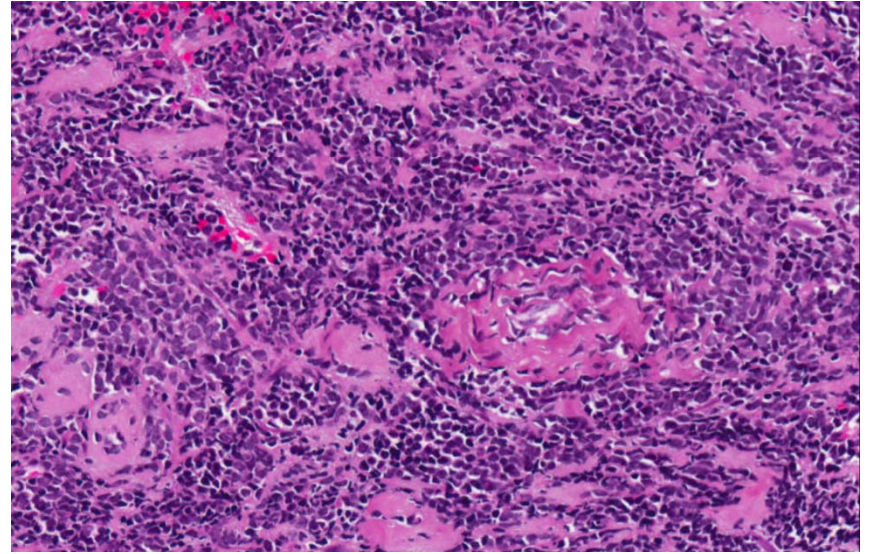
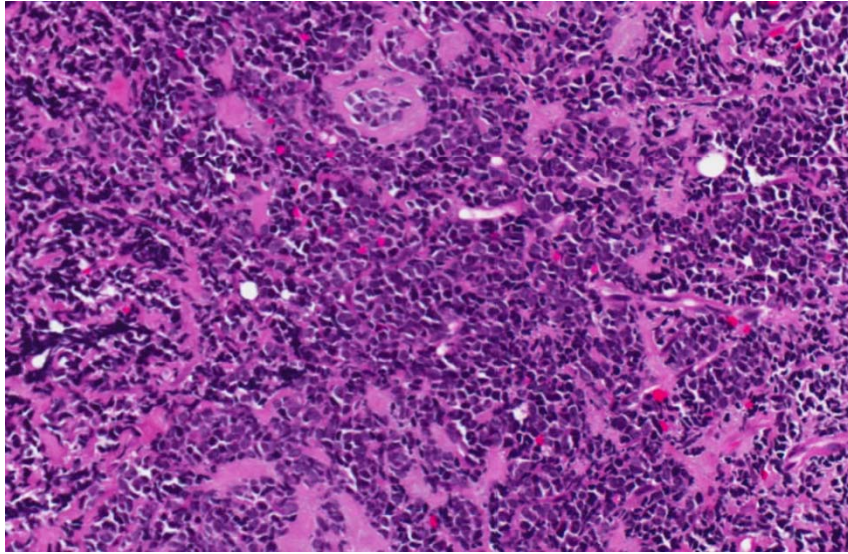
Set D.11

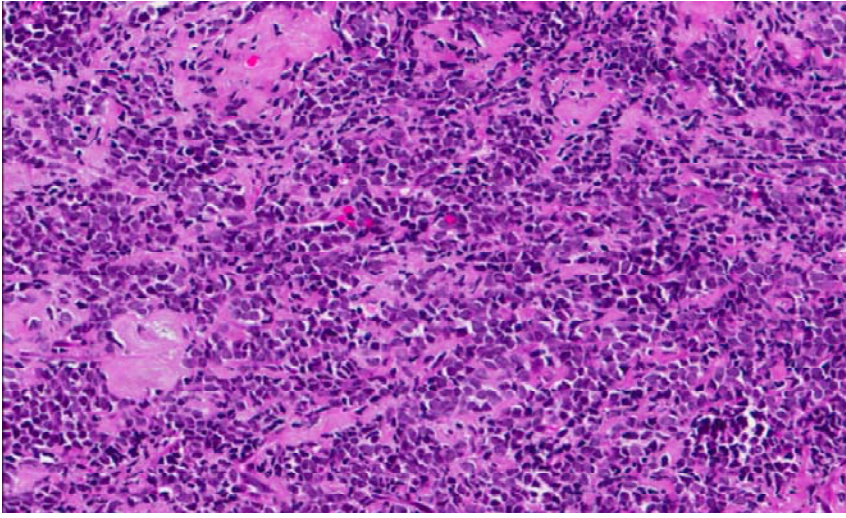


Set D.11



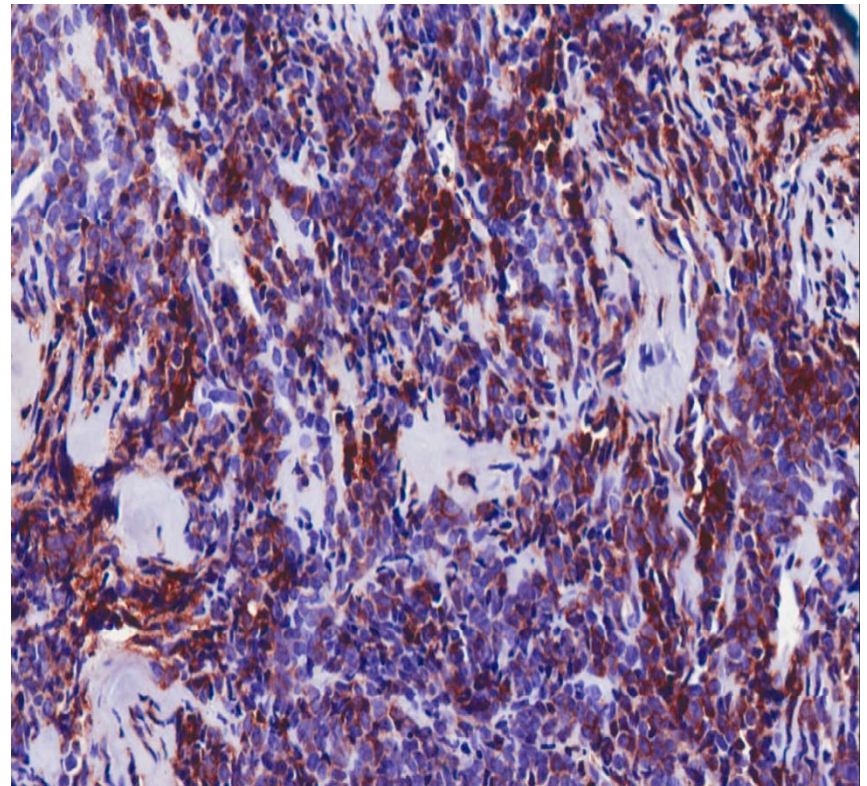
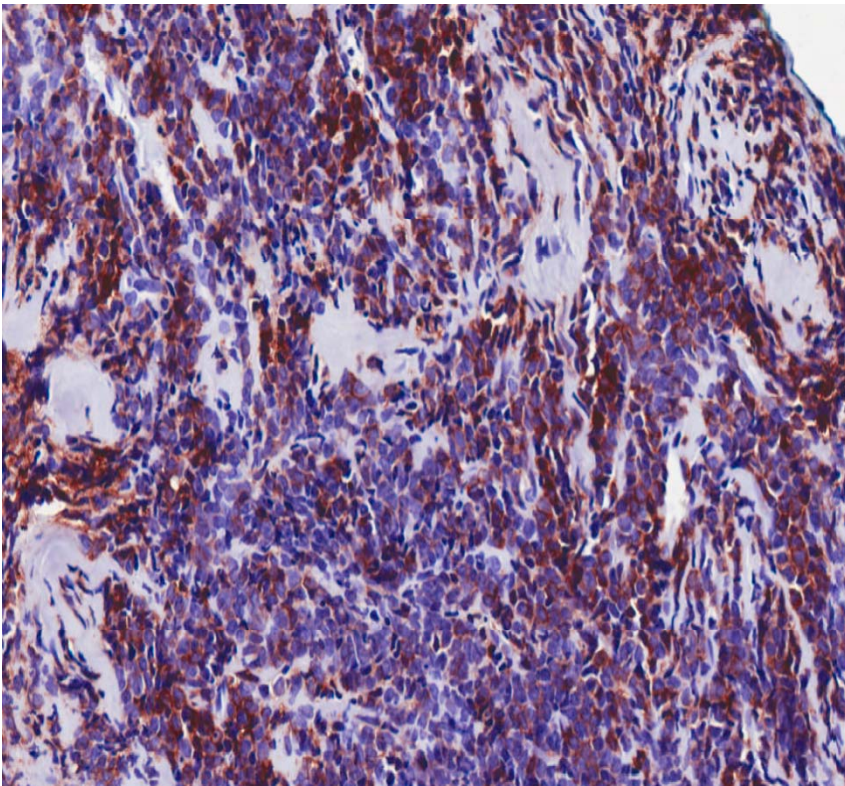
Set D.11





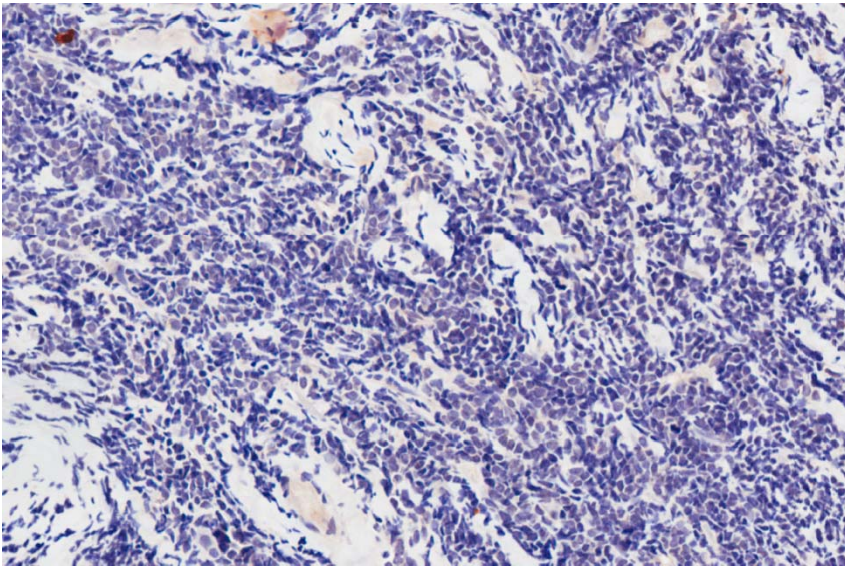
Set D.11

LCA

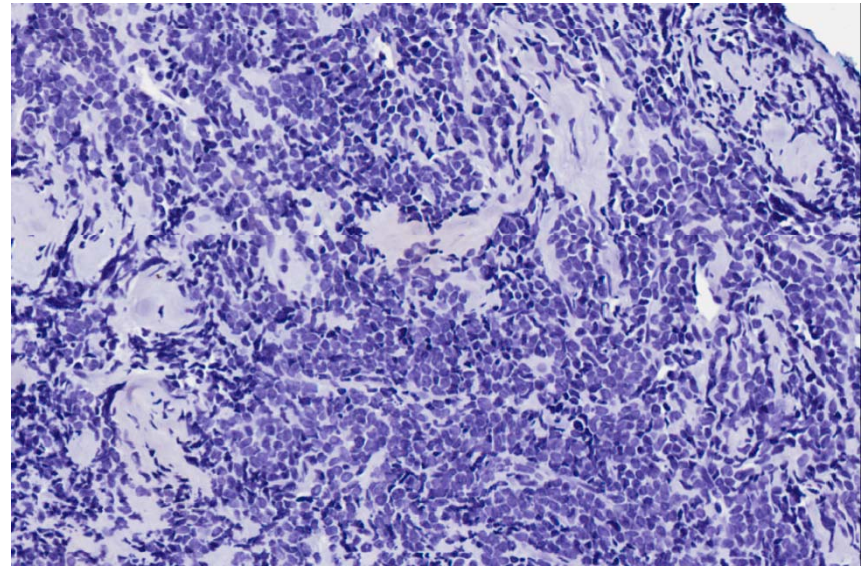


Set D.11

CD3

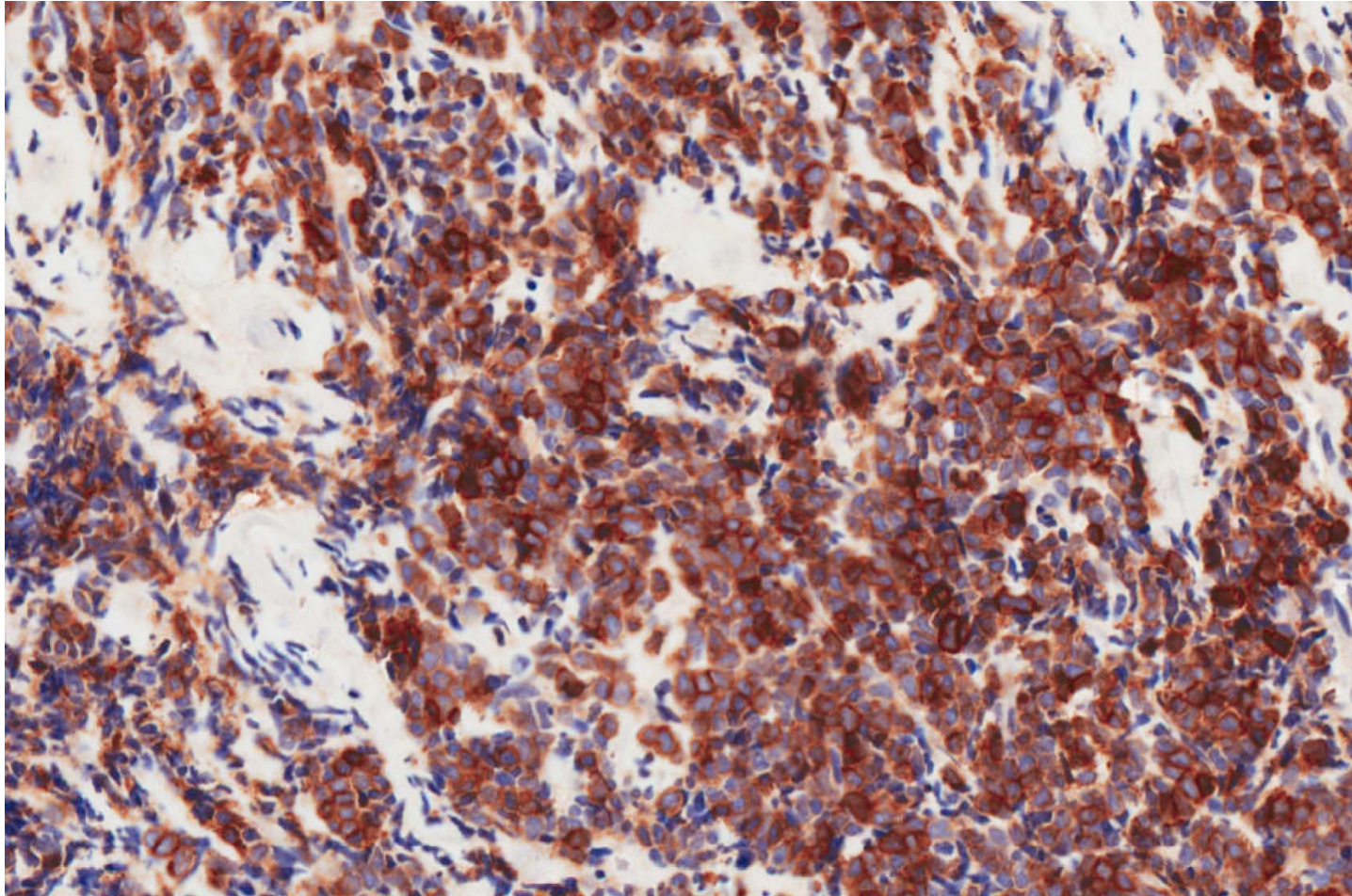


CD20



Set D.11

- CD117



- Granulocytic sarcoma.
- History of chronic myeloid leukaemia on treatment and follow-up by the Haematology department.

Granulocytic sarcoma

- Rare haematological malignancy composed of immature myeloid cells at an extramedullary site.
- May precede leukaemia.
- Most frequently secondary to acute or chronic myeloid leukaemia, myelodysplastic syndrome.
- Poor prognosis.
- In the breast, it may histologically mimic invasive lobular carcinoma, lymphoma, small cell carcinoma.

Learning points

- Recognition and approach to haematolymphoid tumours in the breast.
- Distinction from lymphoma, invasive lobular or small cell carcinoma of breast.