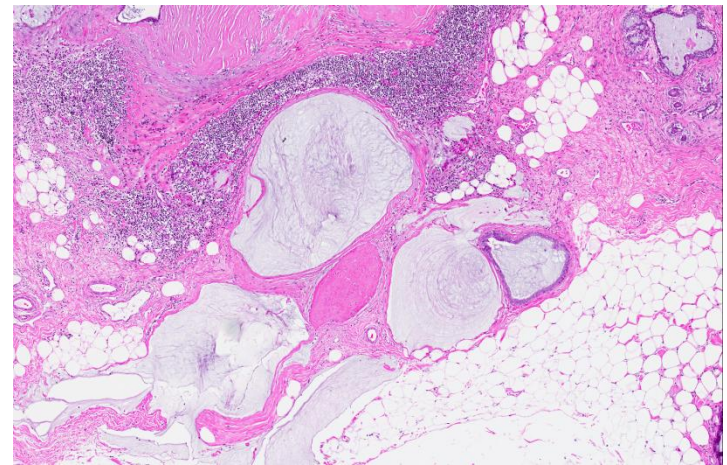
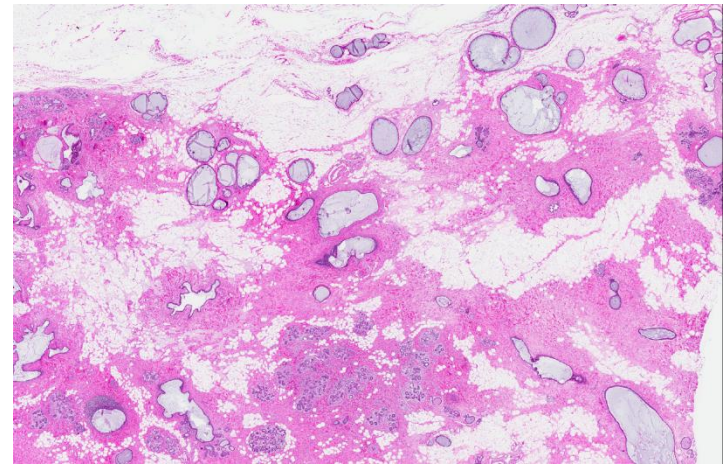
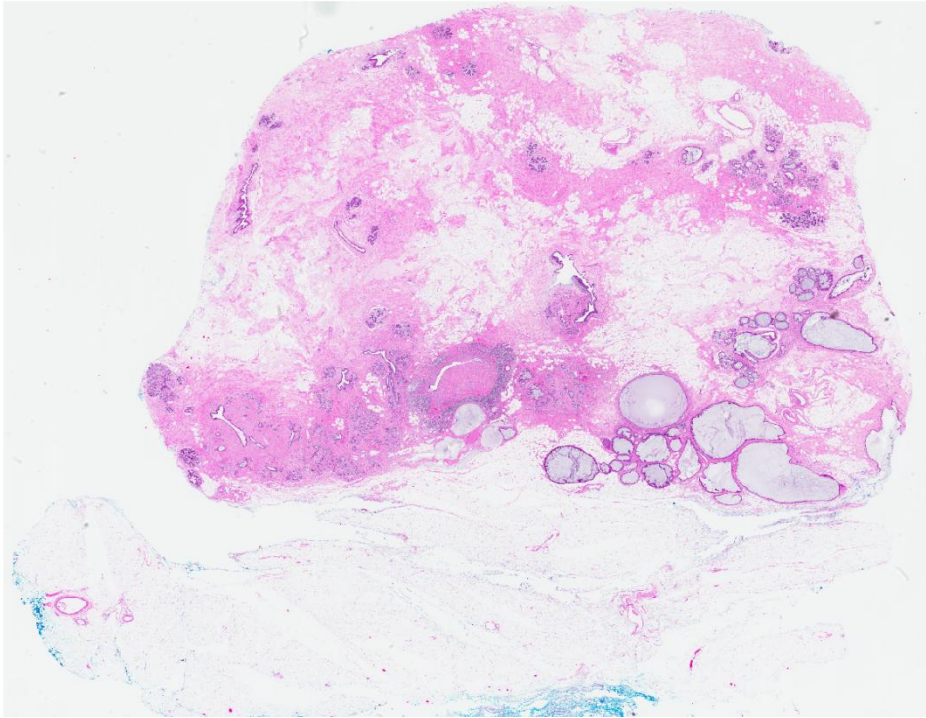


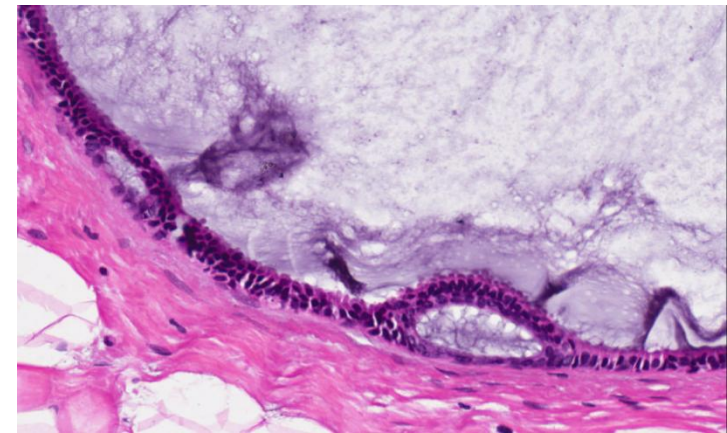
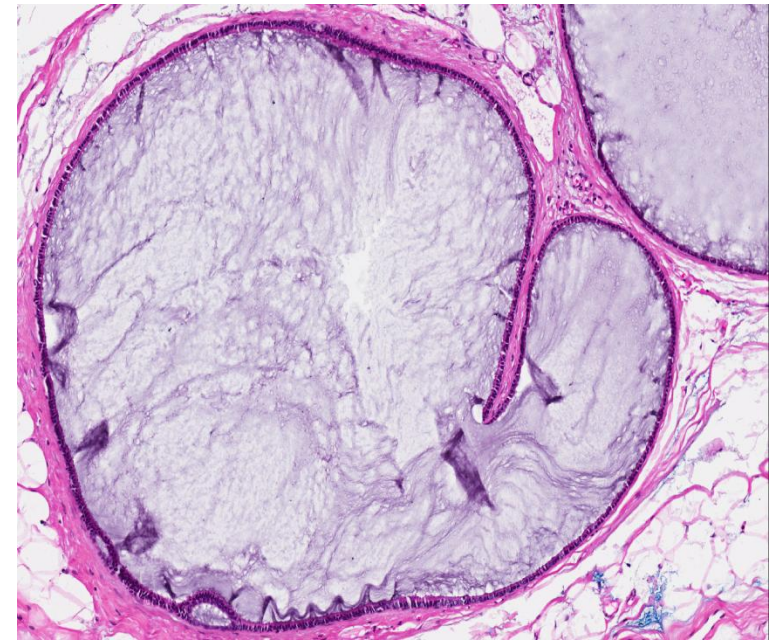
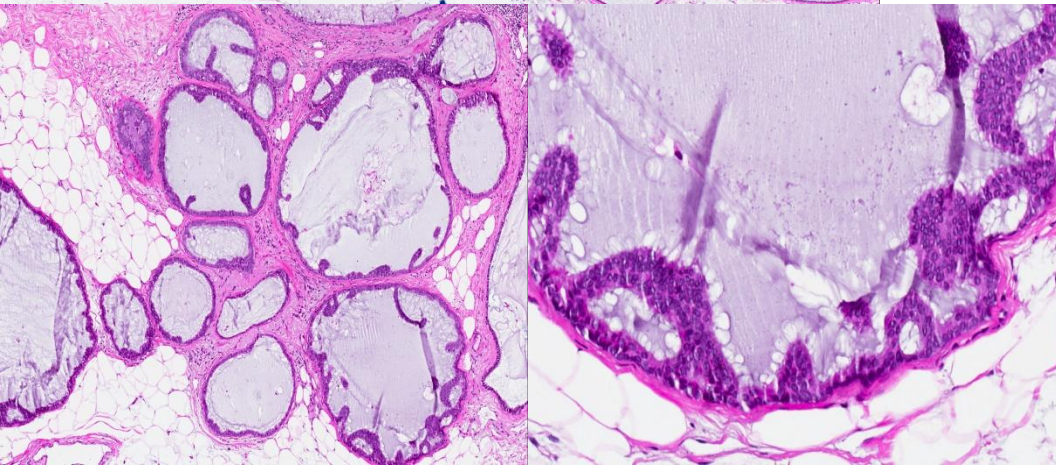
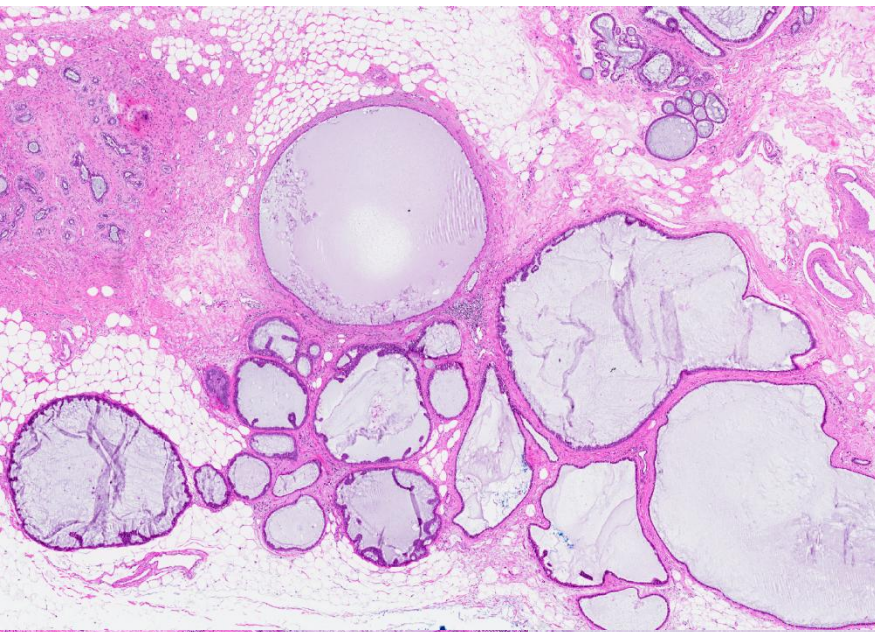
## Set C.9

- 40 year old Chinese female underwent a left mastectomy after a preoperative diagnosis of cancer.
- Macroscopically, the breast showed multiple small nodular 'fleshy' lesions in 3 quadrants (upper outer, lower outer, lower inner).
- Current sections are from the upper outer quadrant.

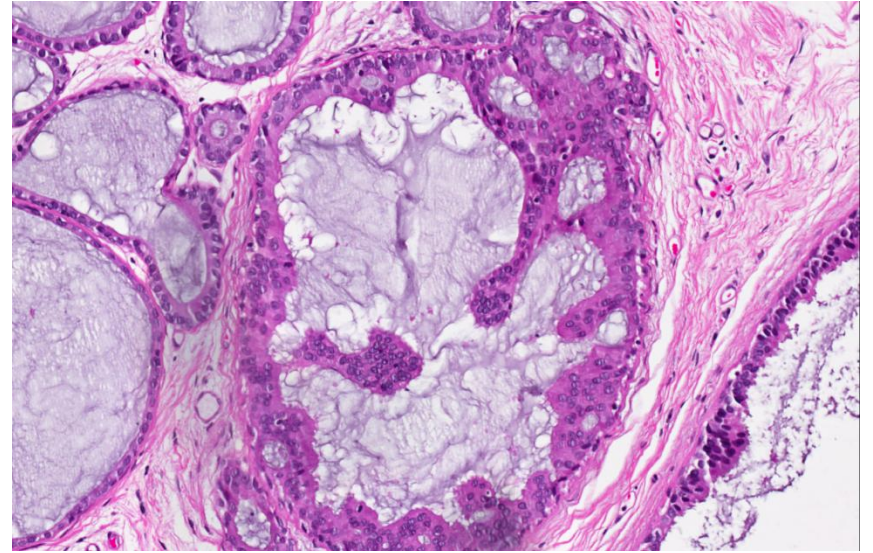
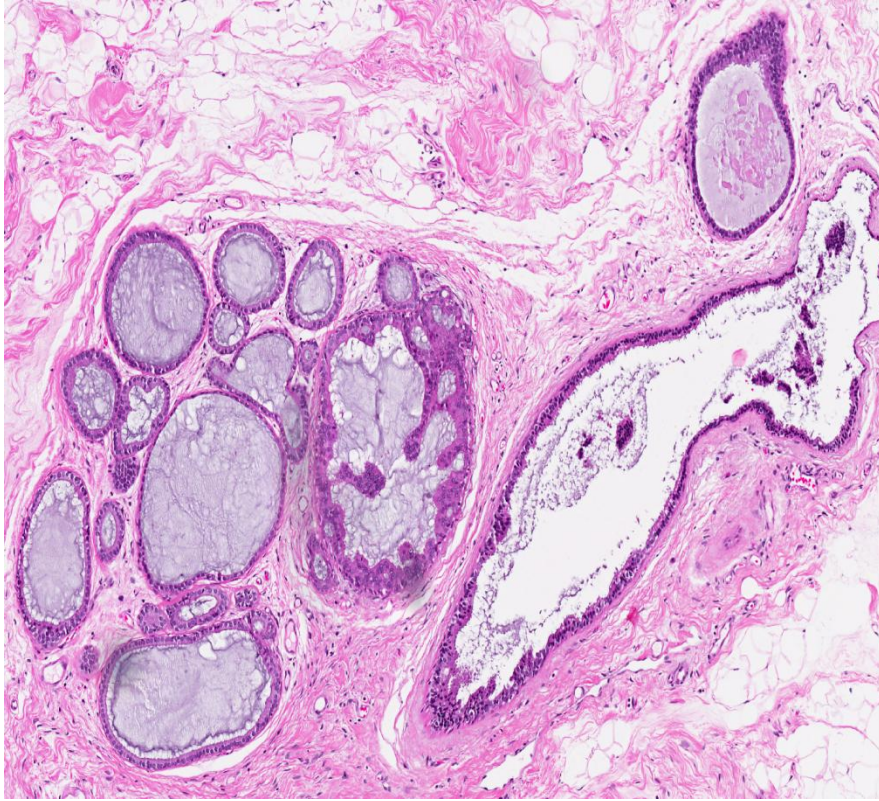
# Set C.9



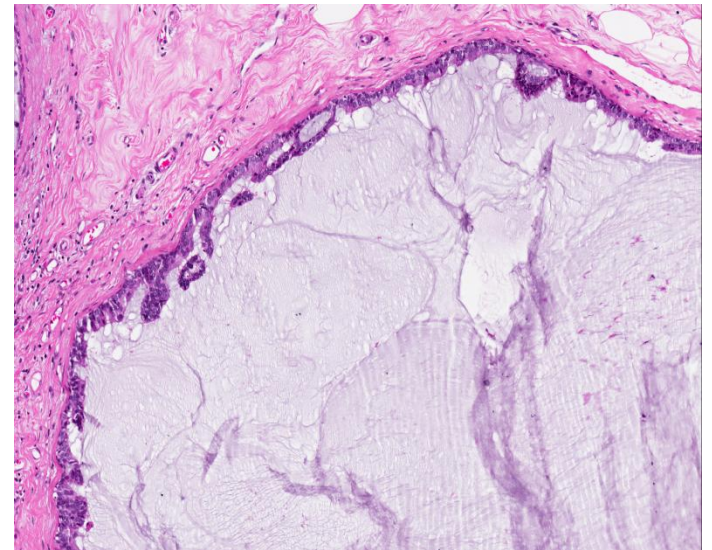
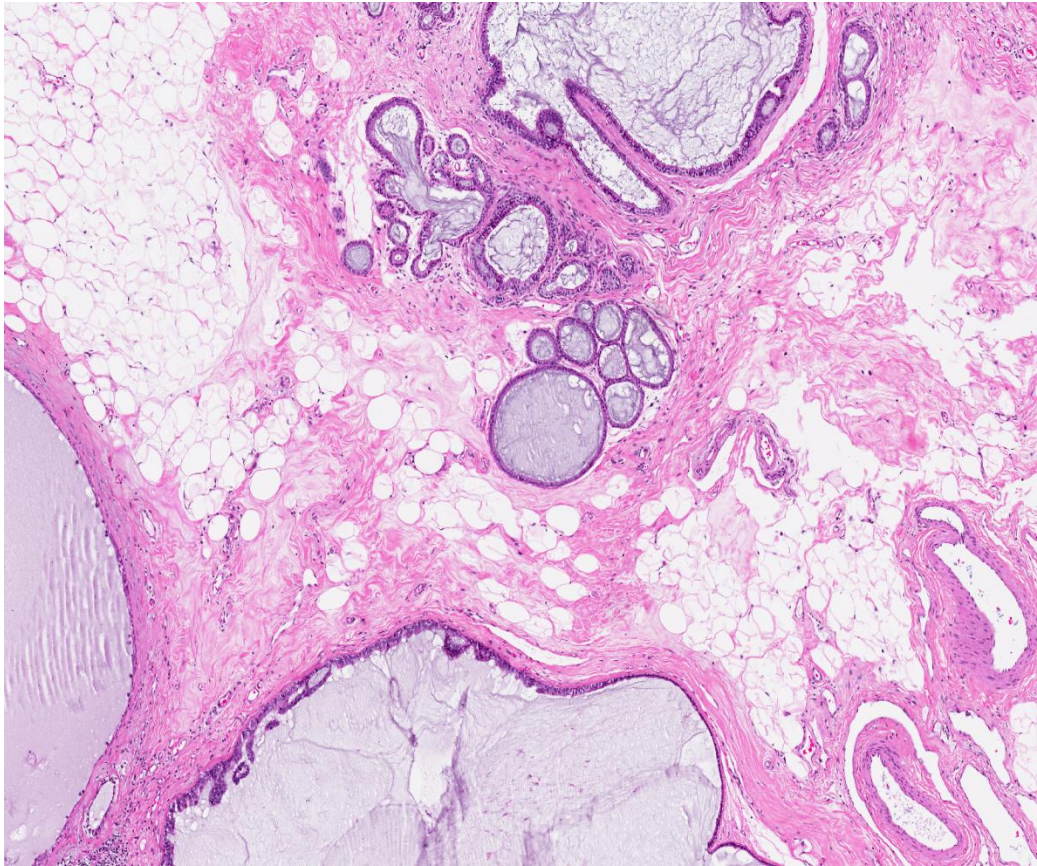
# Set C.9



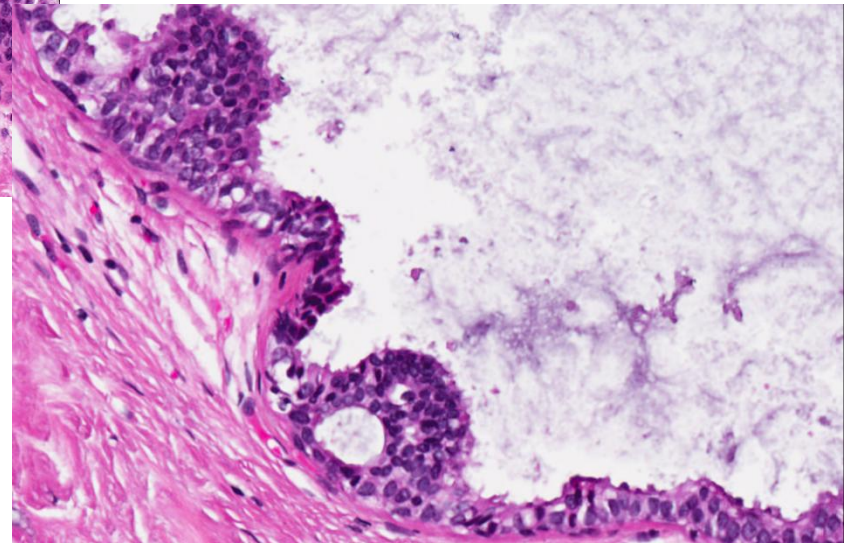
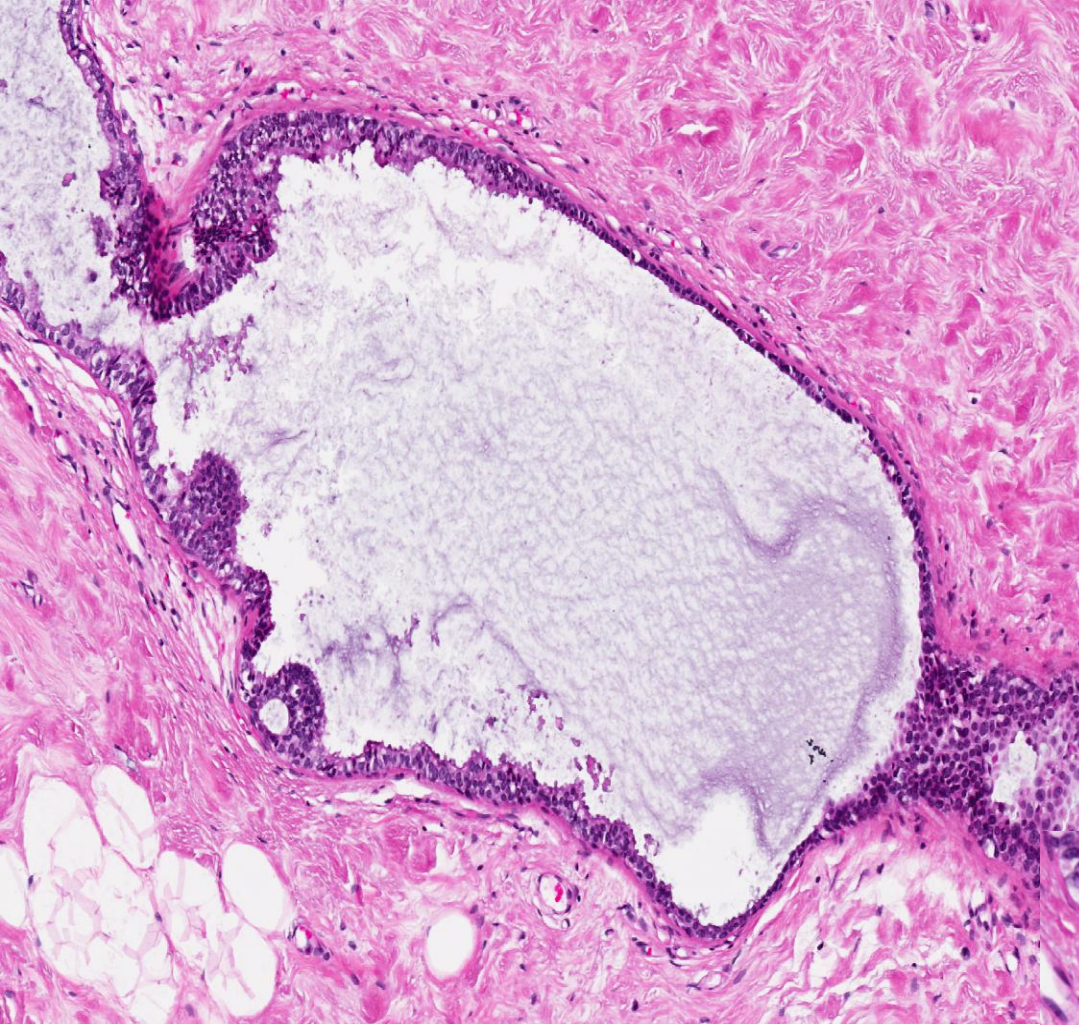
# Set C.9



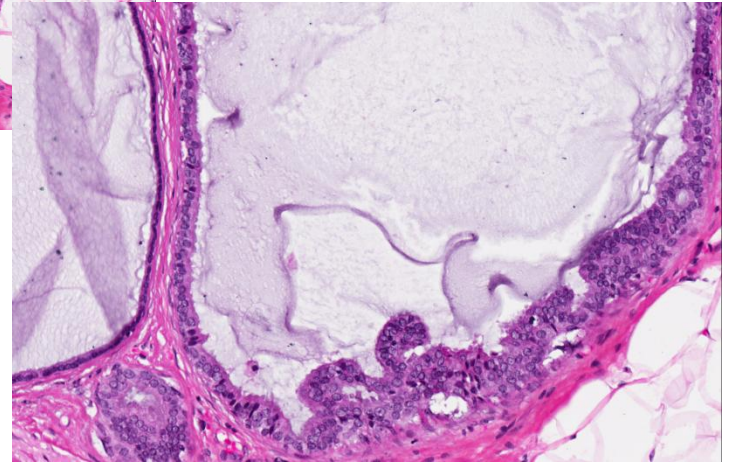
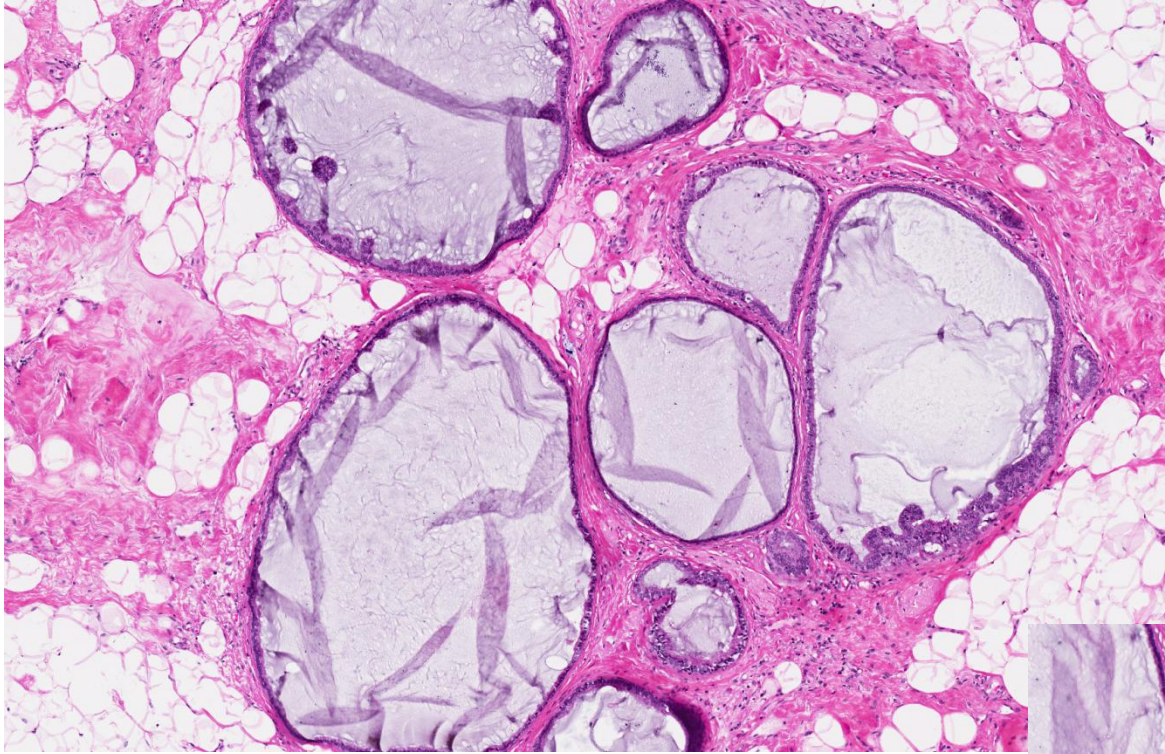
# Set C.9



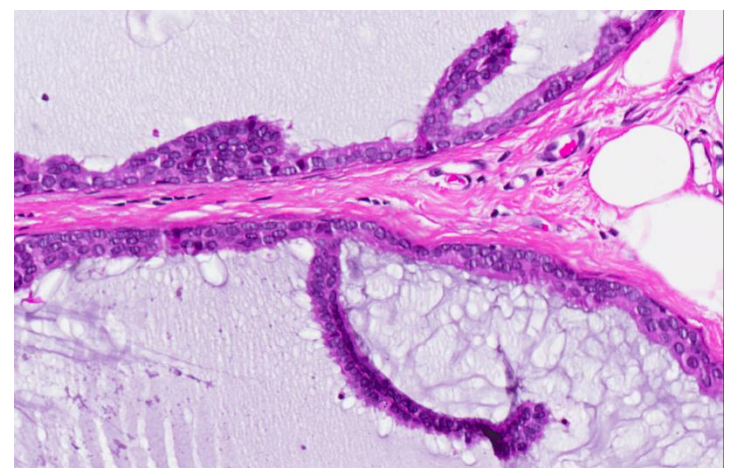
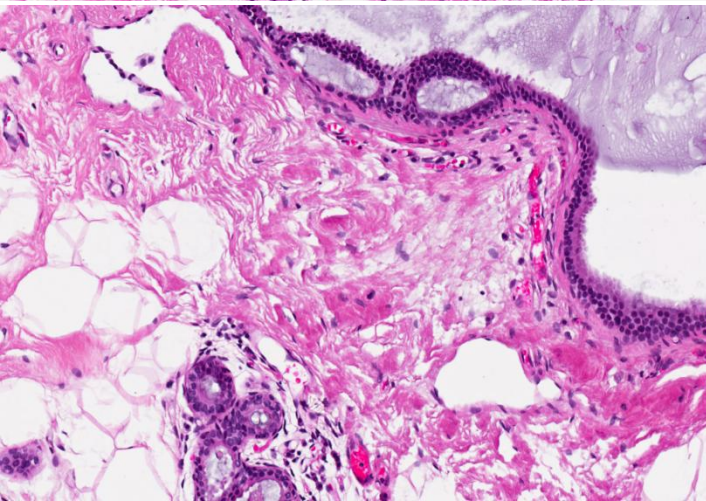
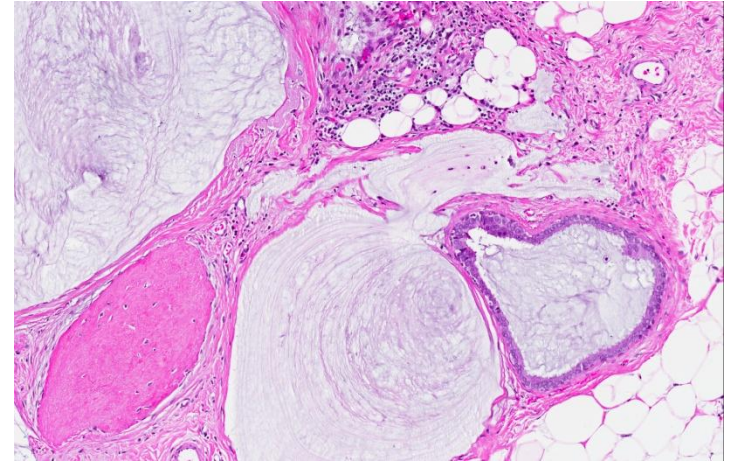
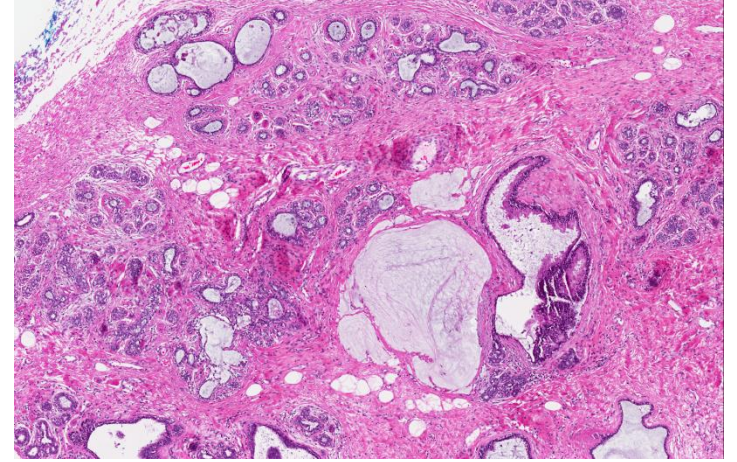
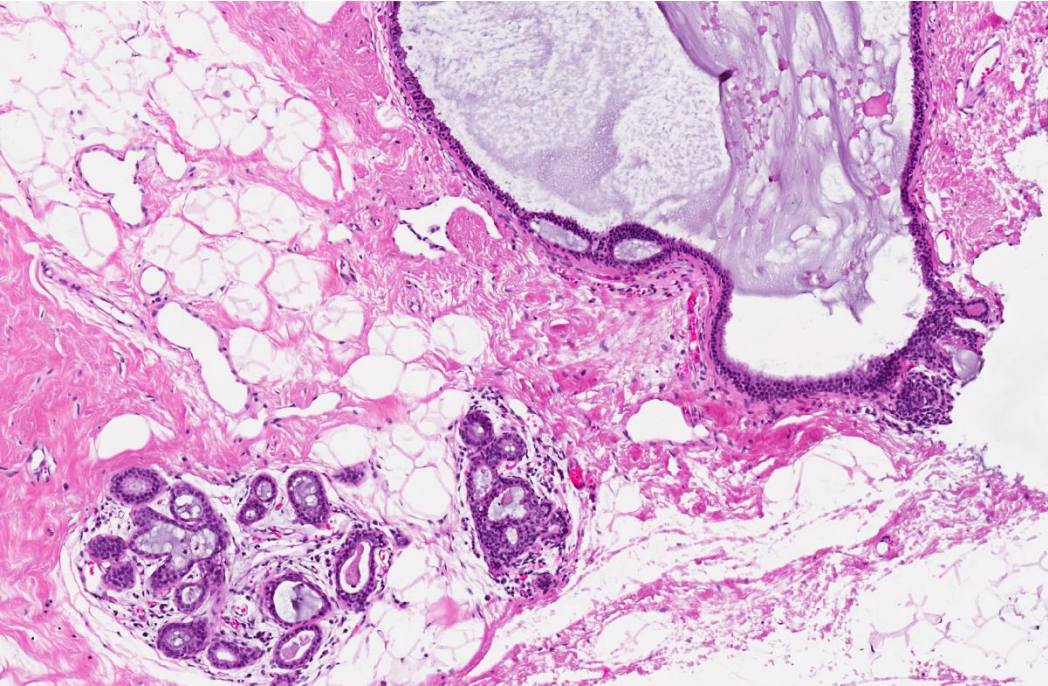
# Set C.9



# Set C.9



# Set C.9





- Multicentric DCIS with MLL, micropapillary and cribriform