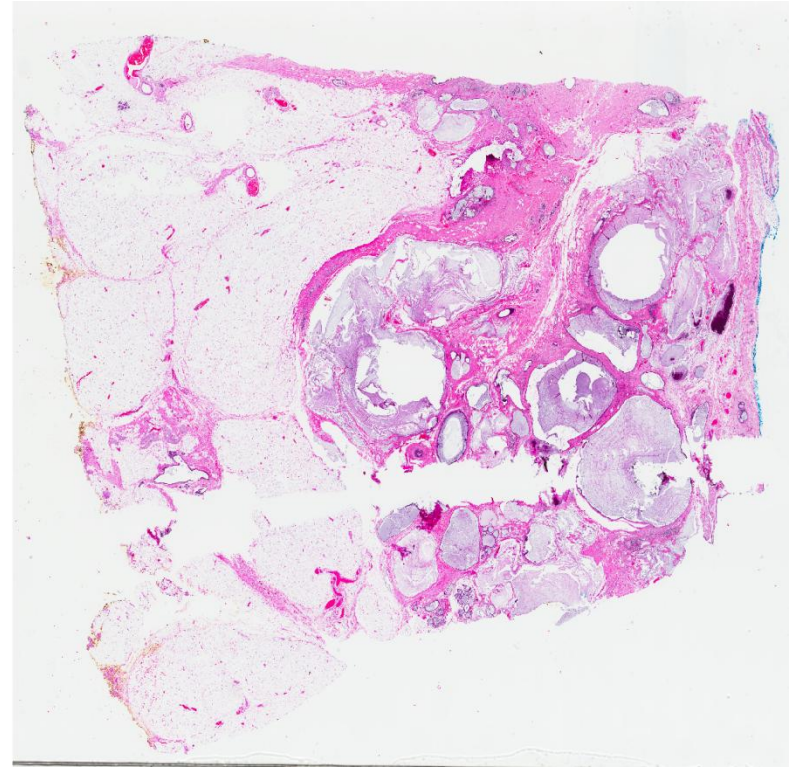
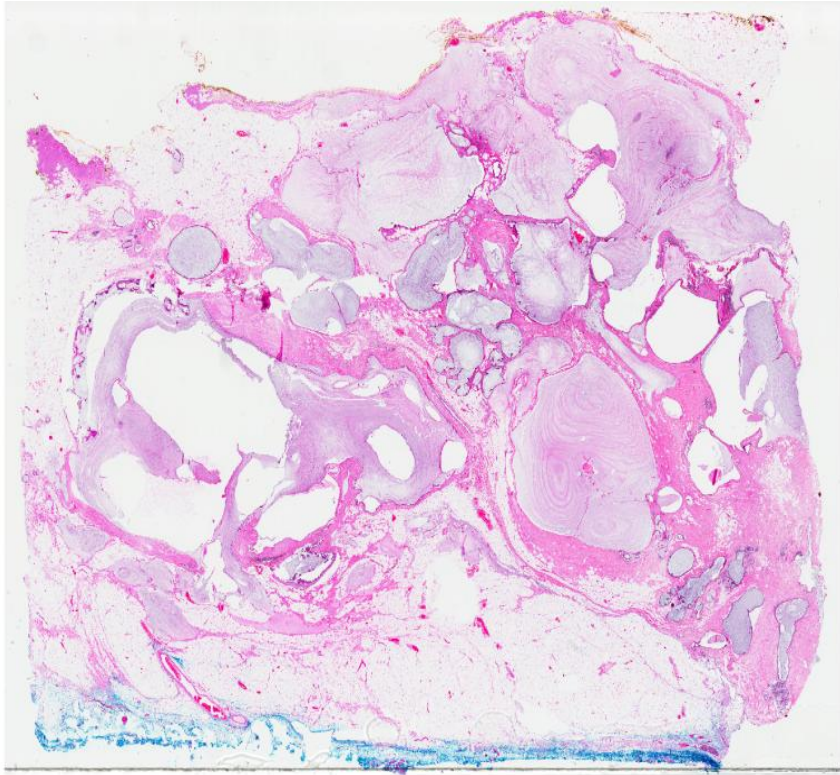


Set C.8

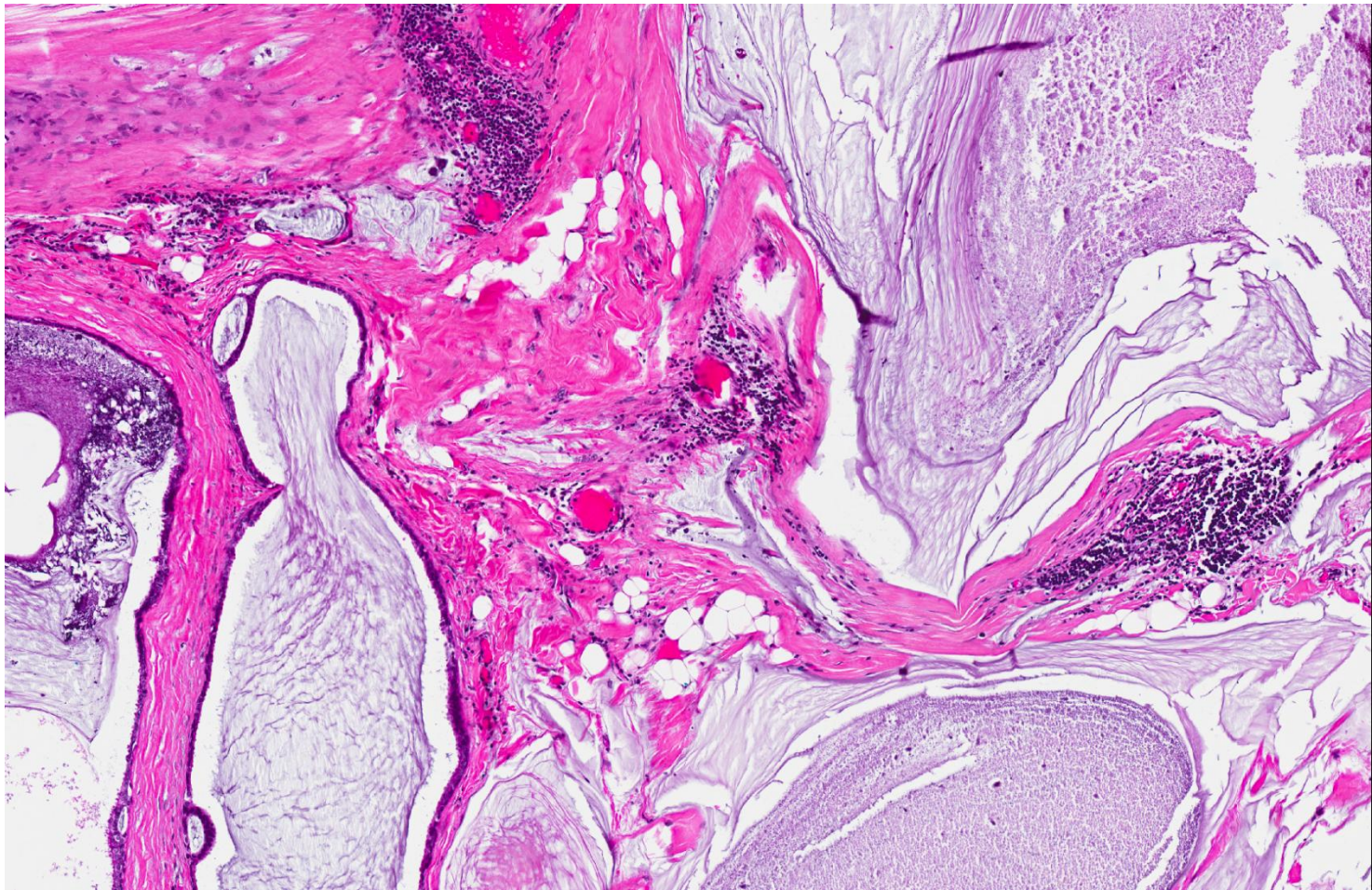
- 45 year old Chinese female with previous right mastectomy performed a year ago for a diagnosis of ductal carcinoma in situ (DCIS) associated with a mucocele-like lesion.
- She recently presented with left breast nodules, for which an excision biopsy of a nodule was diagnosed as DCIS.
- She opted for left mastectomy.
- Macroscopically, the breast showed scattered cystic spaces containing viscid mucoid material spanning a region of 8cm.
- Sections are from these cystic areas.



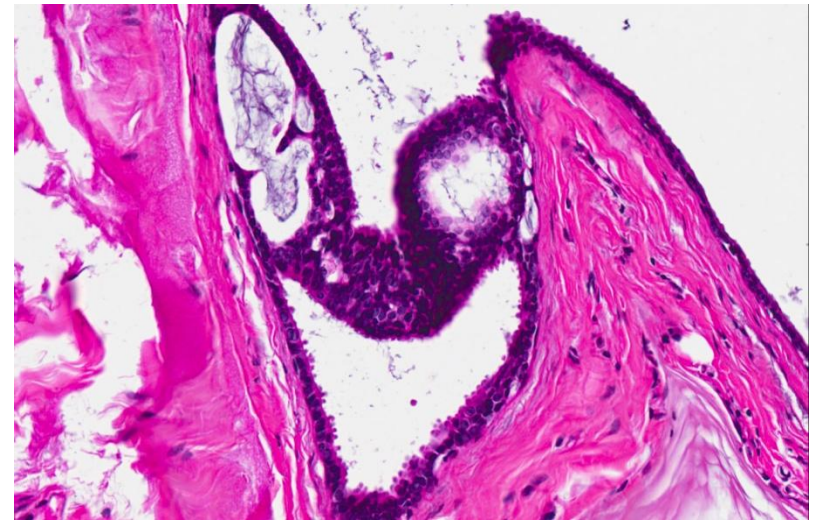
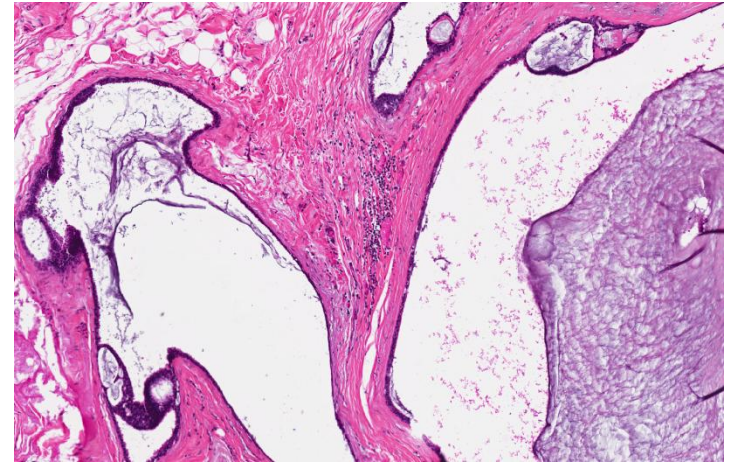
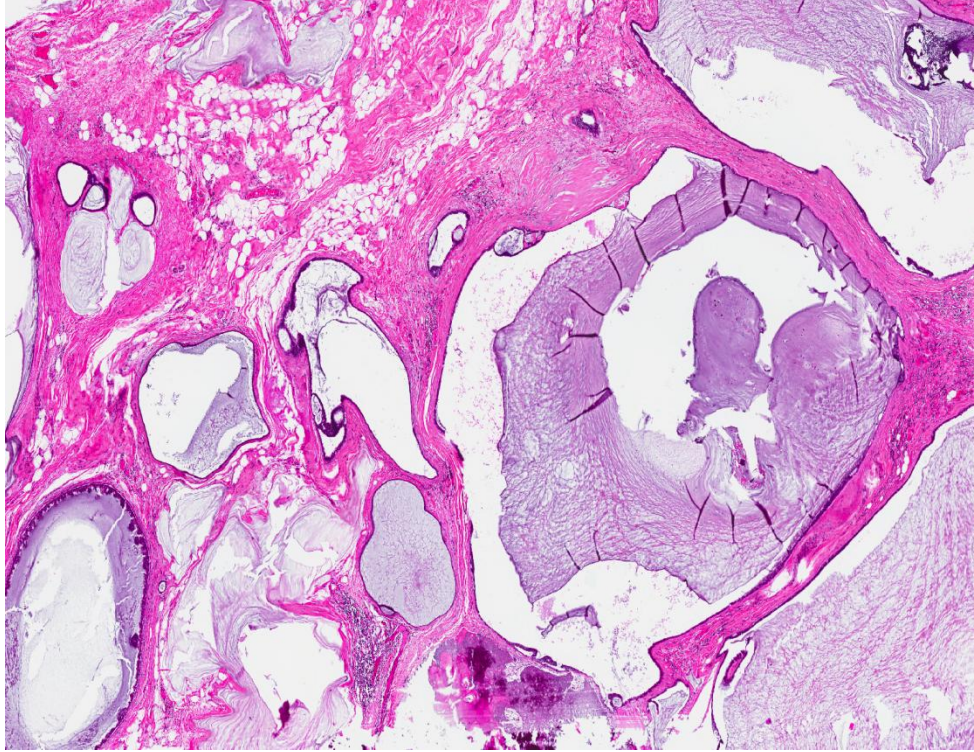
Set C.8



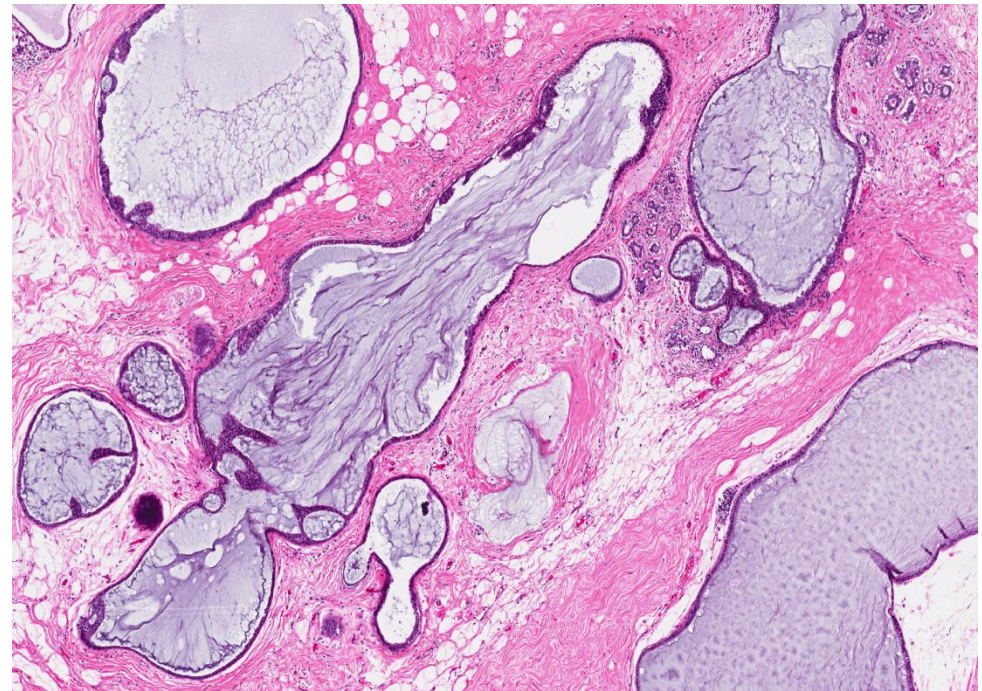
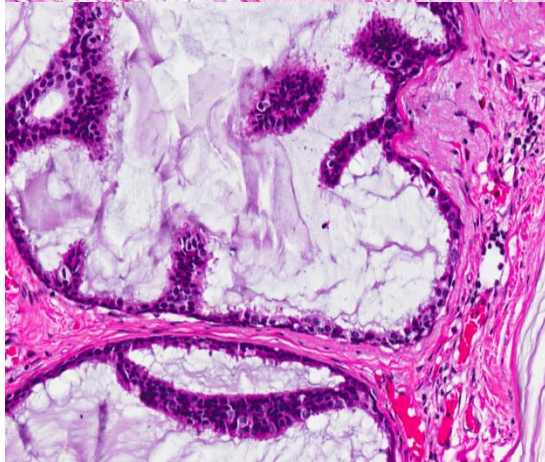
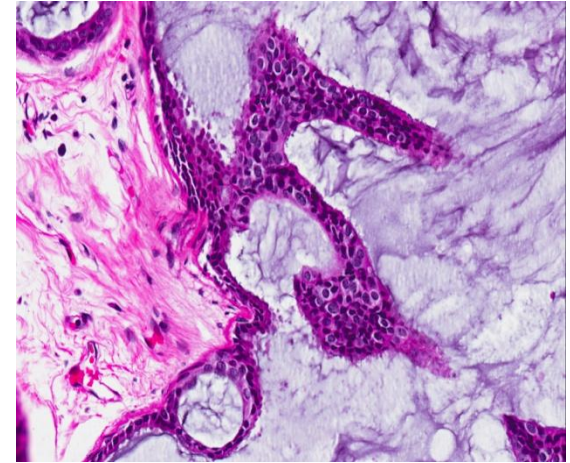
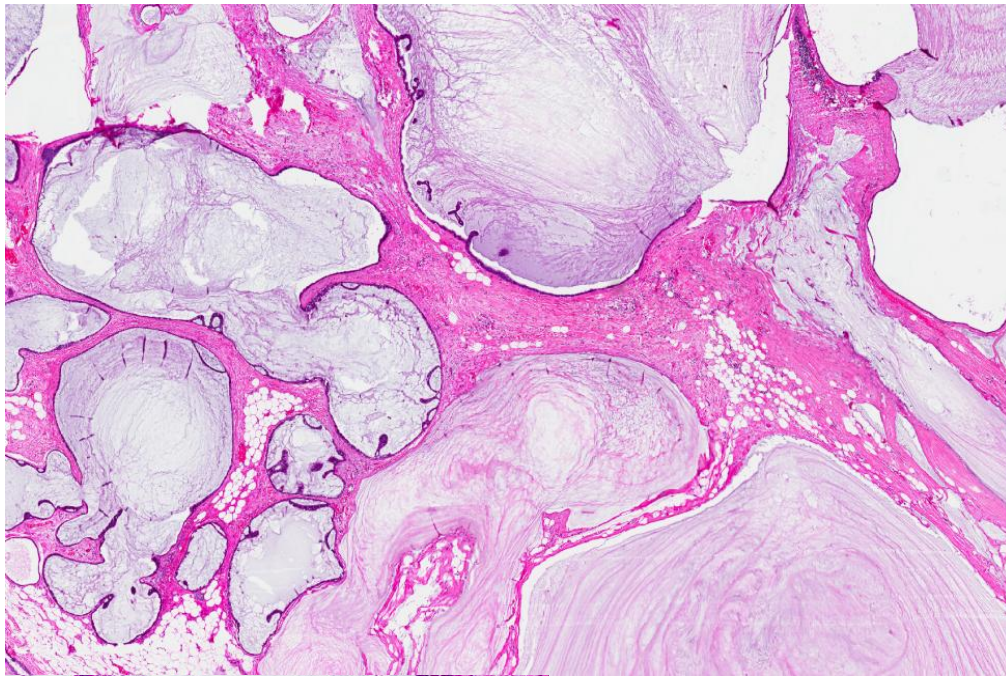
Set C.8



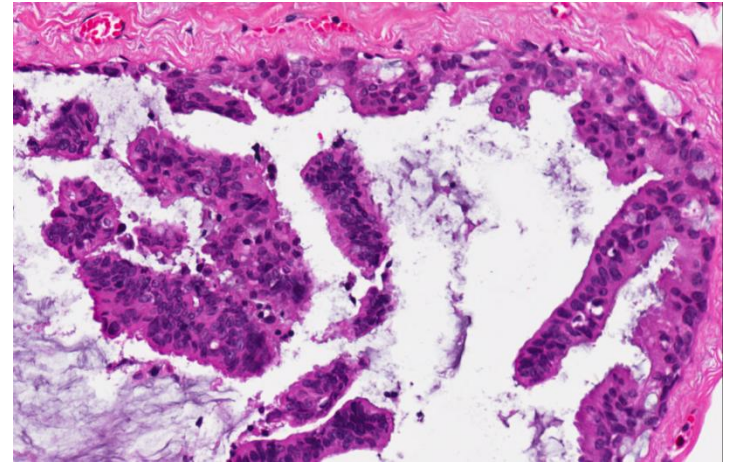
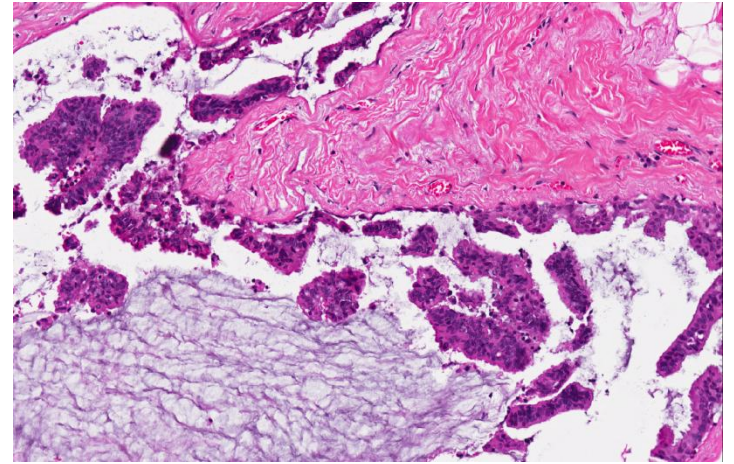
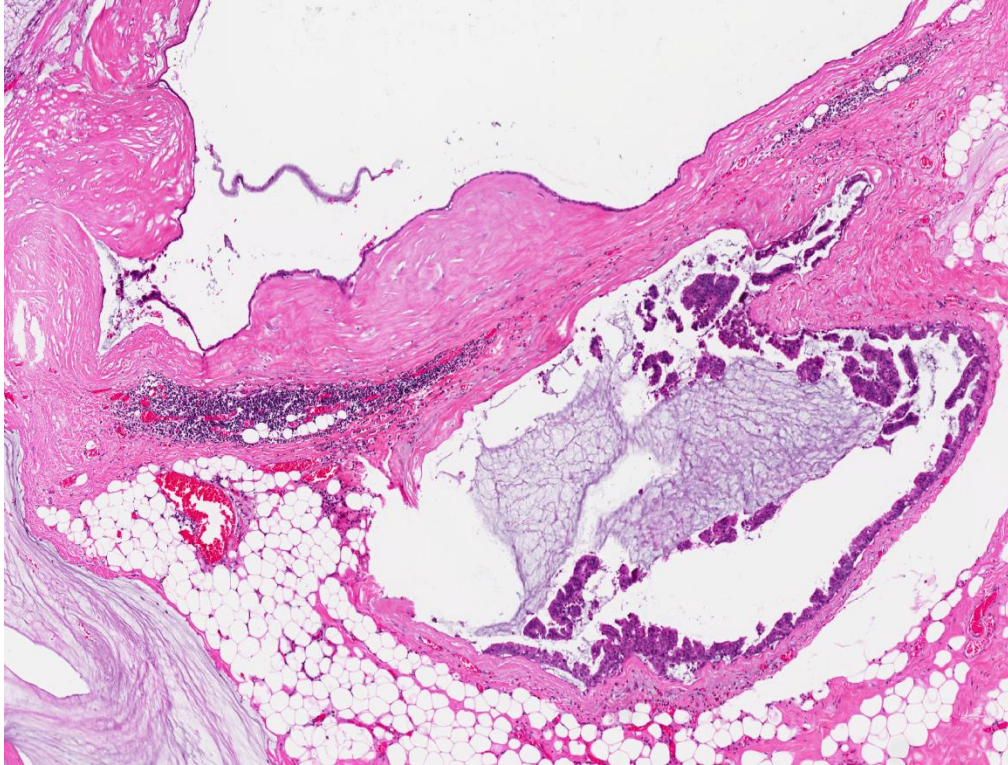
Set C.8



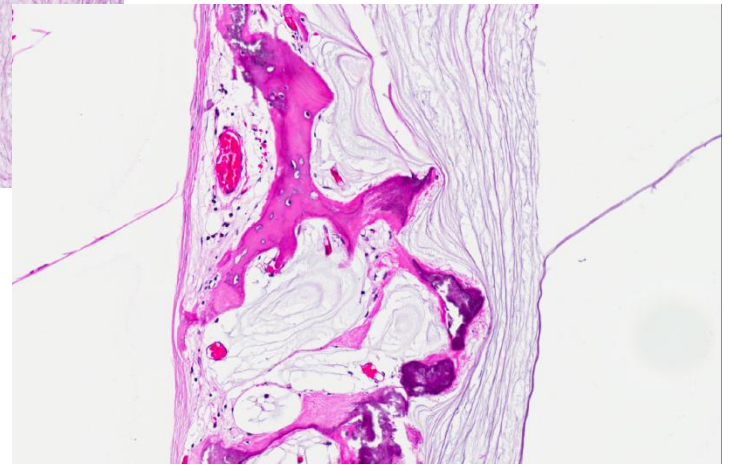
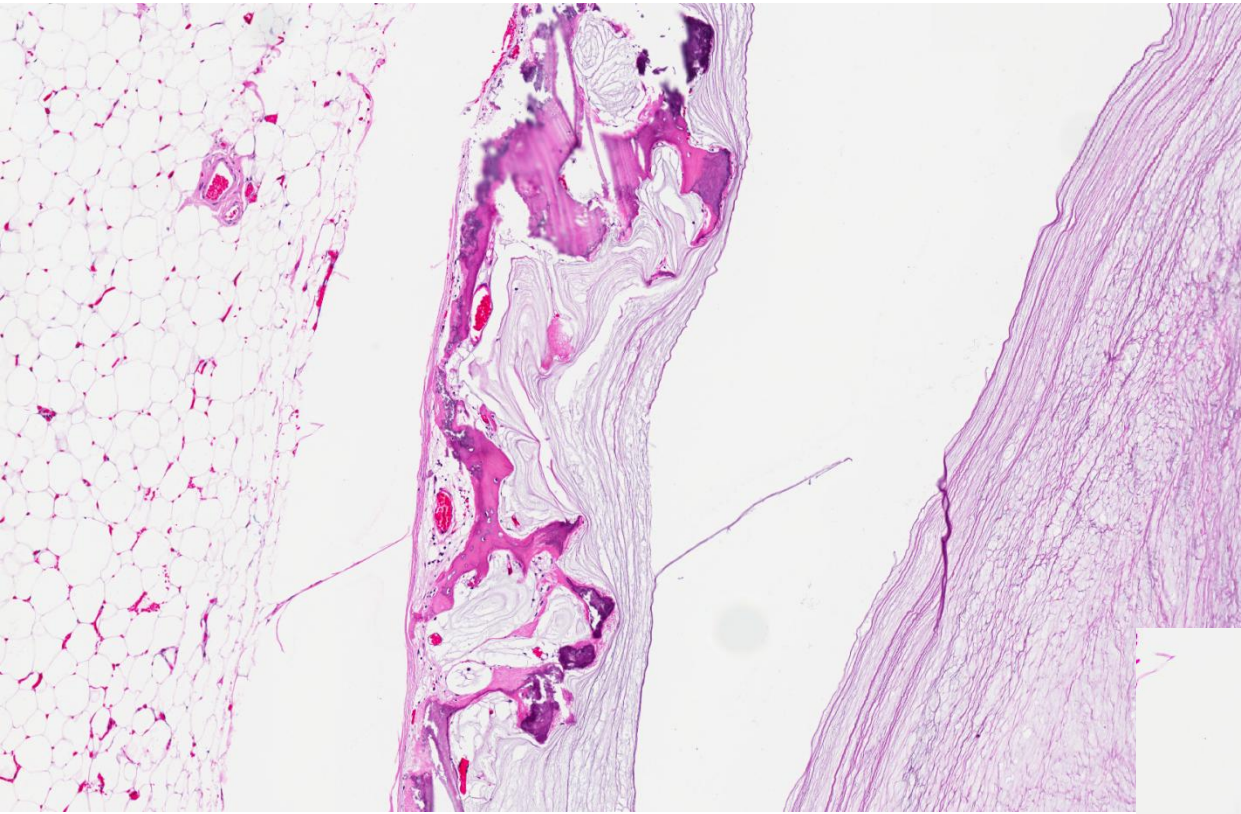
Set C.8



Set C.8



Set C.8



- Mucocele-like lesion with micropapillary and cribriform ductal carcinoma in situ.
- Metaplastic bone formation.

Learning points

- Diagnosis of DCIS in MLL.
- Measurement of size.
- Assessment of margin
 - Is mucin at the margin considered positive?
 - Should there be identified abnormal epithelium at the margin for positivity?
- Detached epithelium within extracellular mucin vs early invasive mucinous cancer:
 - Levels and p63 IHC.