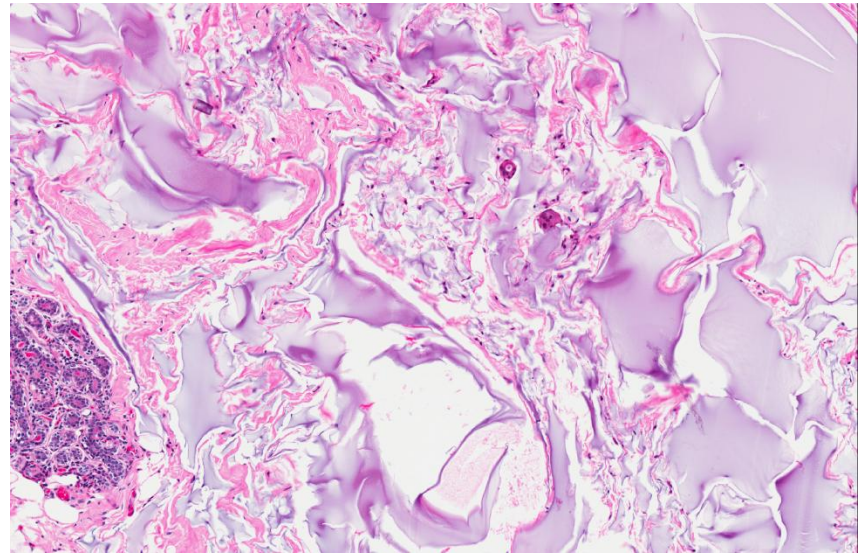
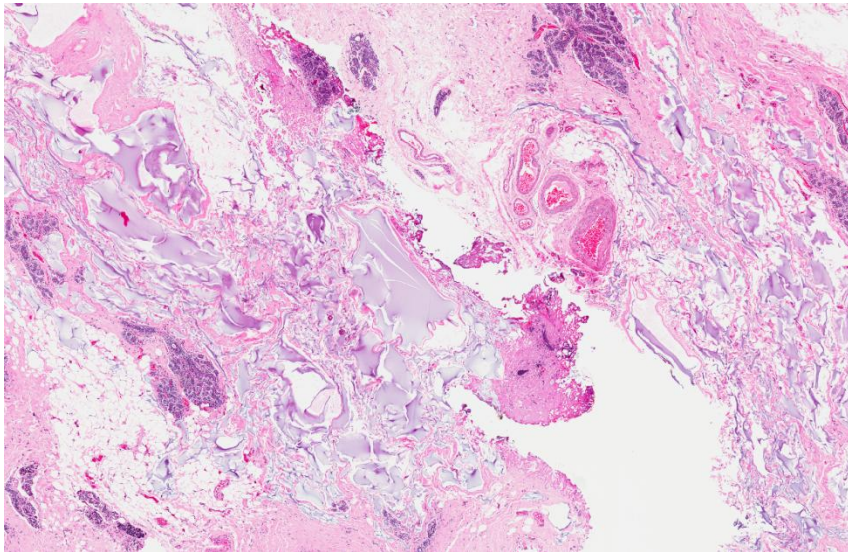
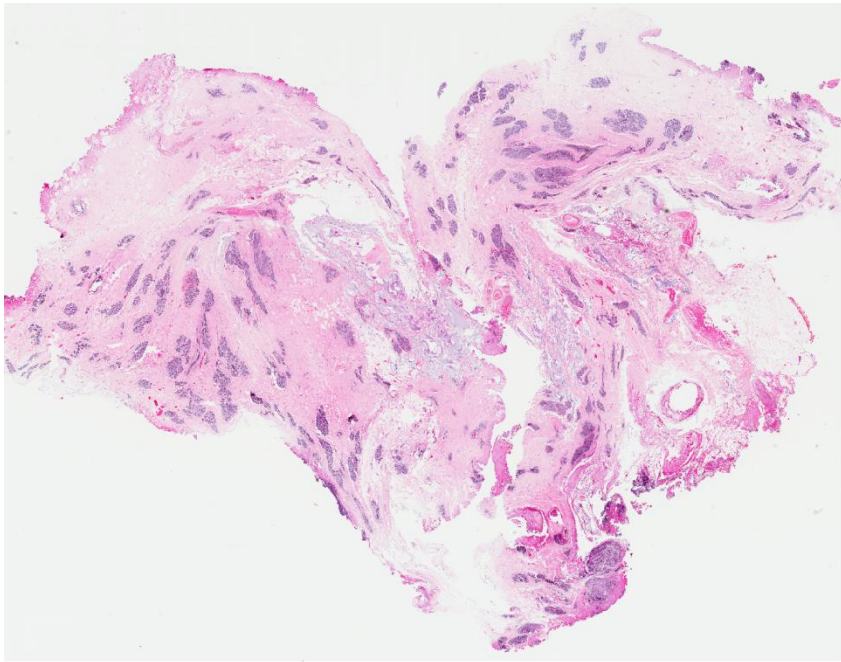


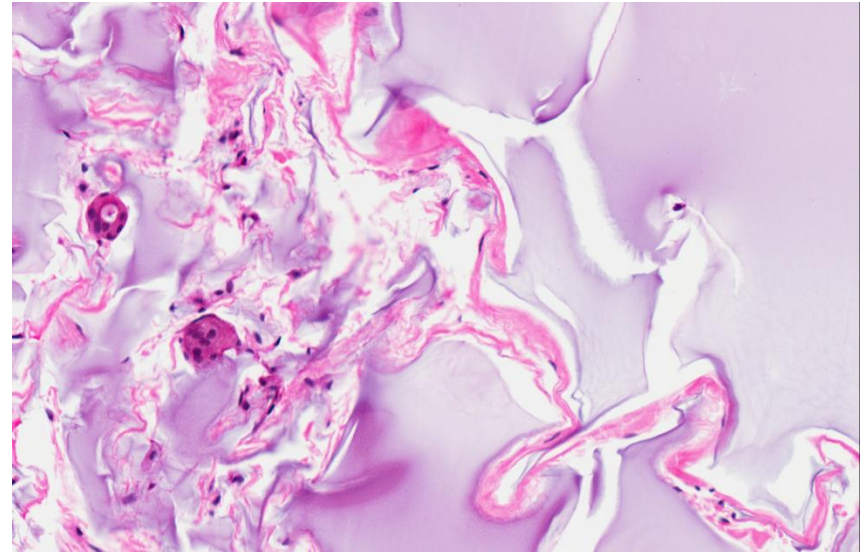
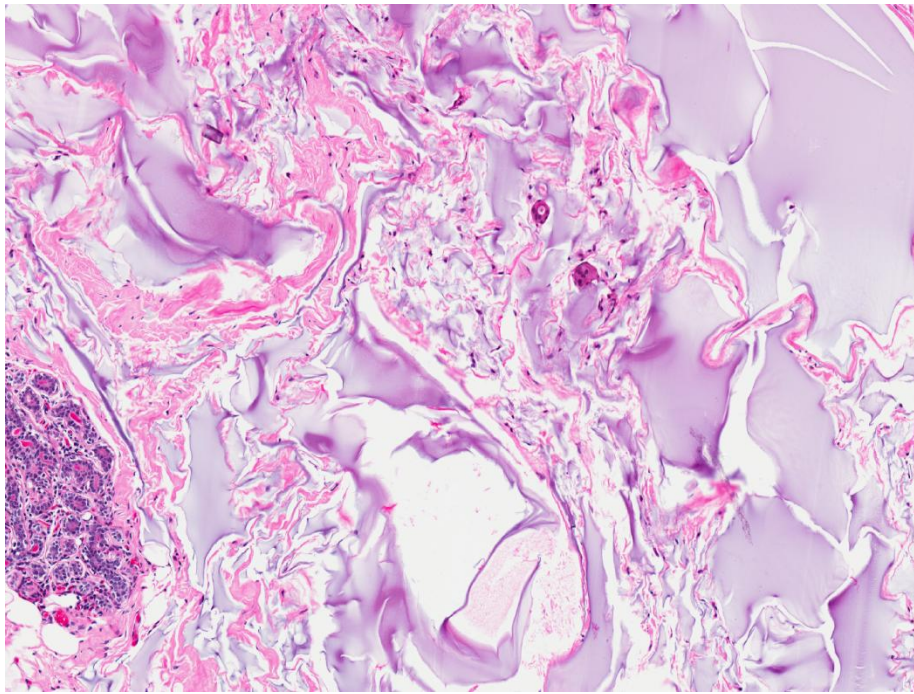
# Set C.6

- 45 year old female was found to have a 1.5cm breast mass.

# Set C.6

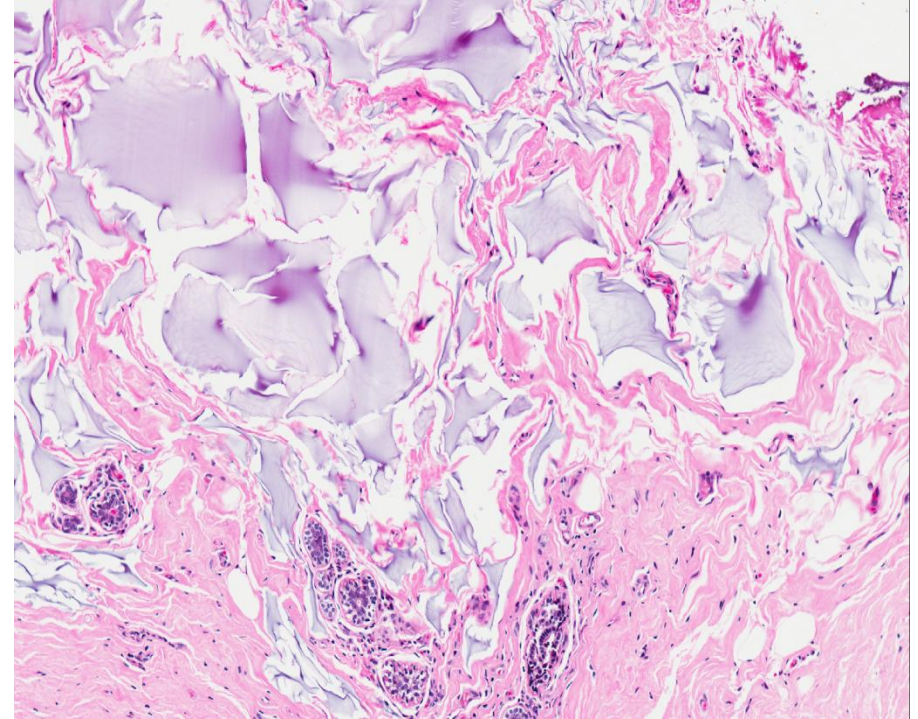
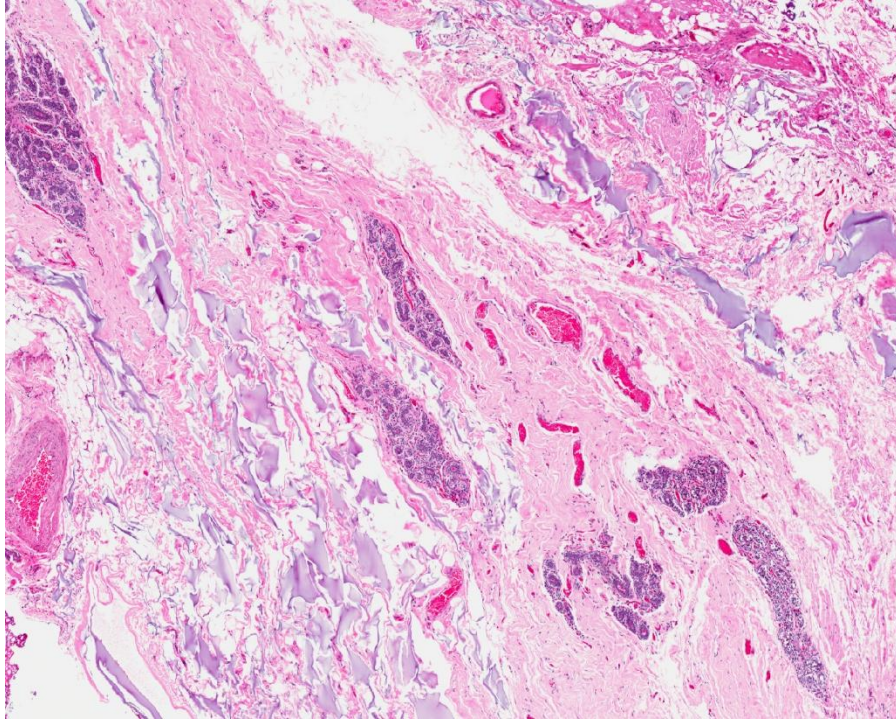


# Set C.6



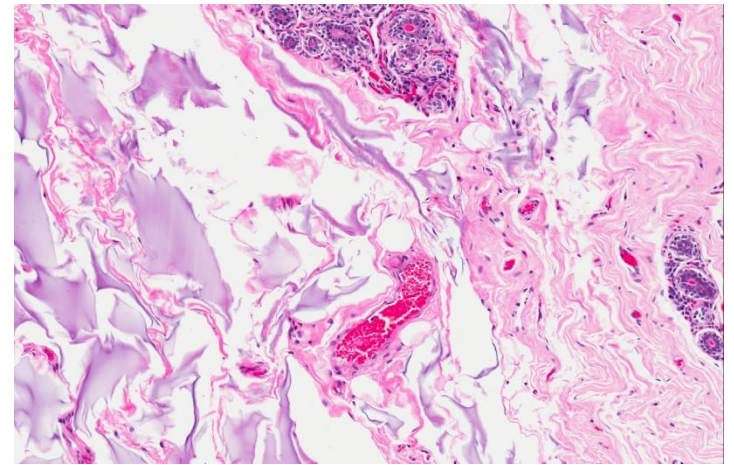
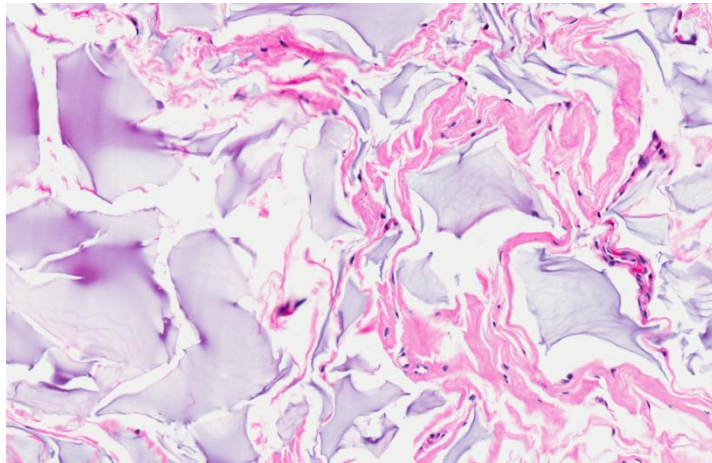
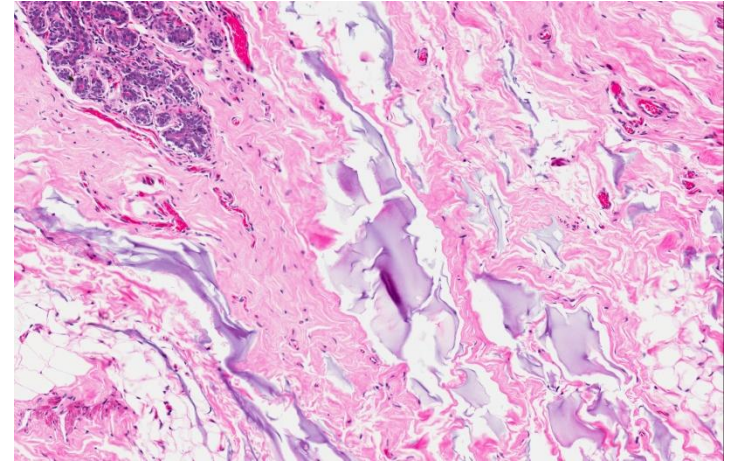
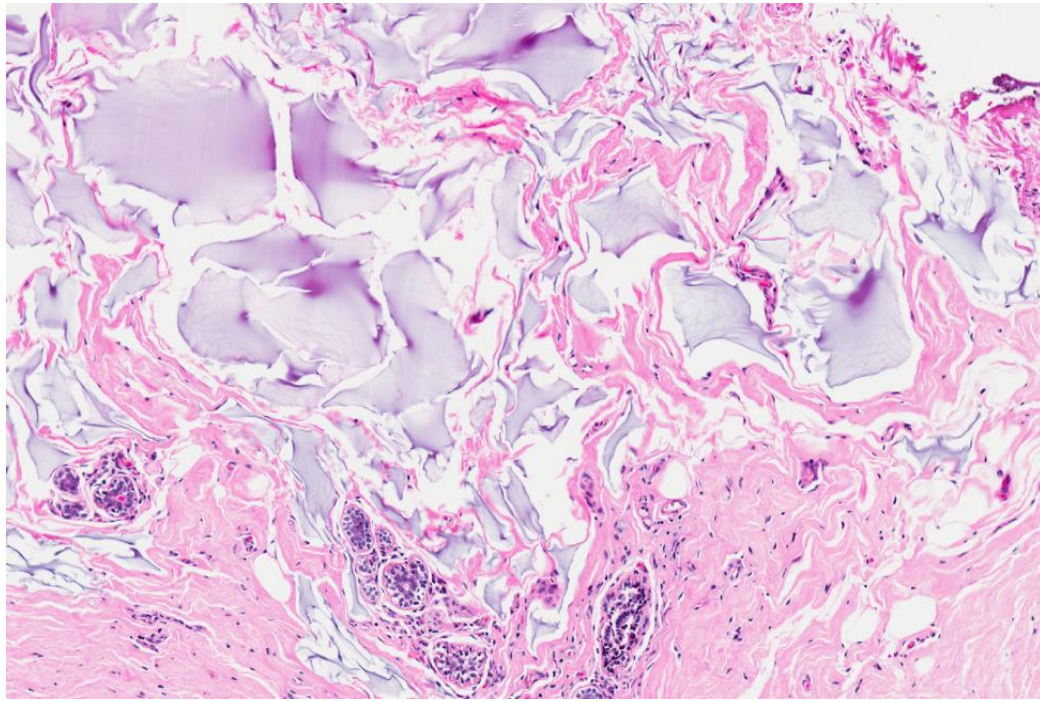


# Set C.6



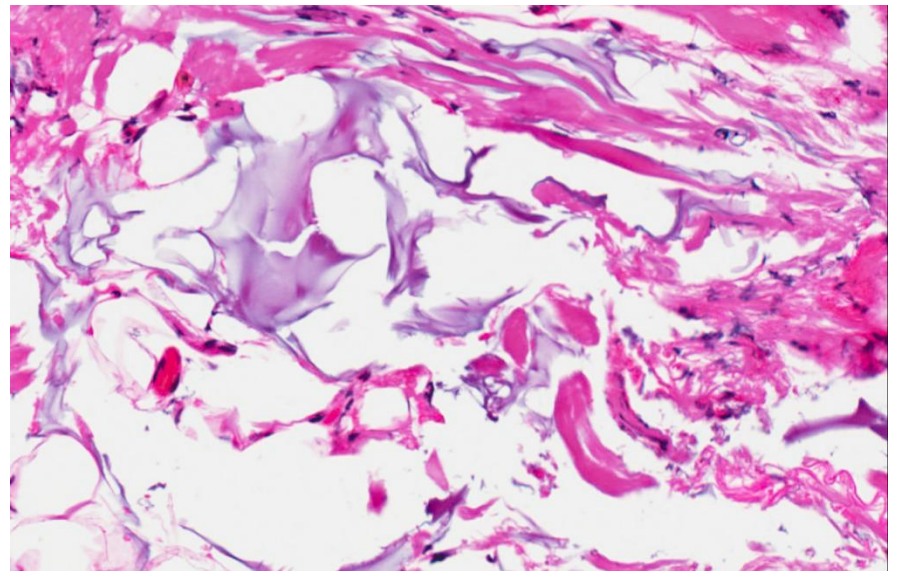
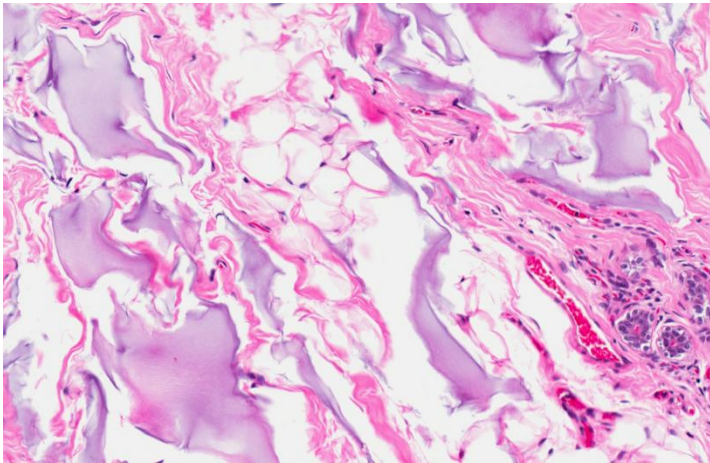
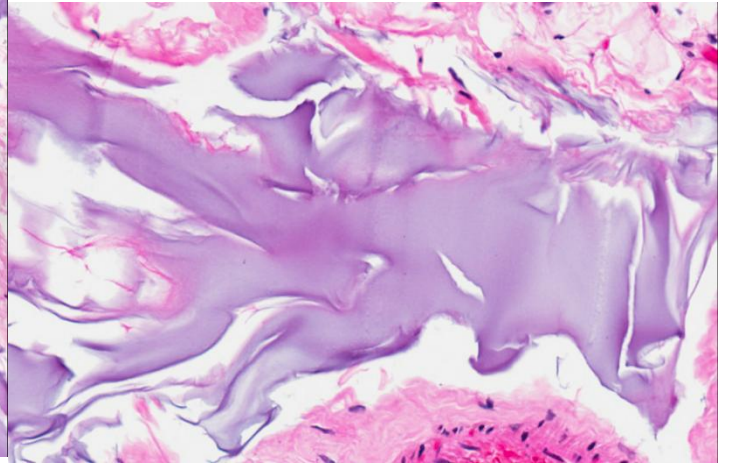
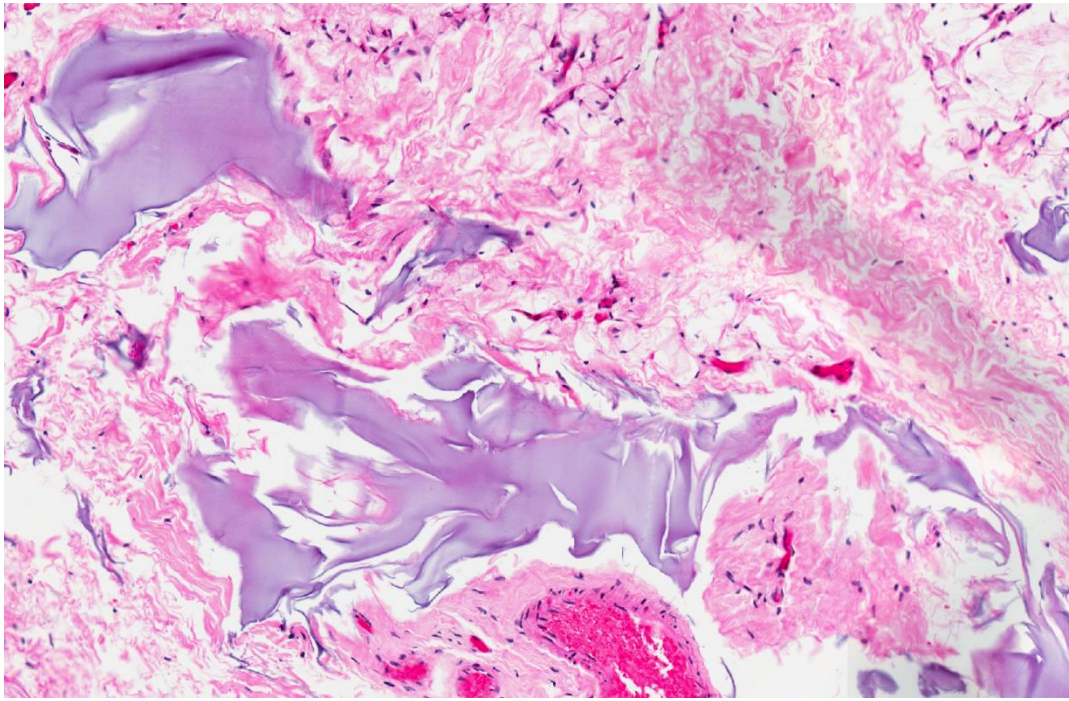


# Set C.6





# Set C.6



- Polyacrylamide gel injection for breast augmentation.

# Learning points

- Recognition of extraneous material and to derive relevant clinical history.
- Identification of foreign body giant cell reaction.
- Approach to extracellular mucin without cells - deeper levels needed.