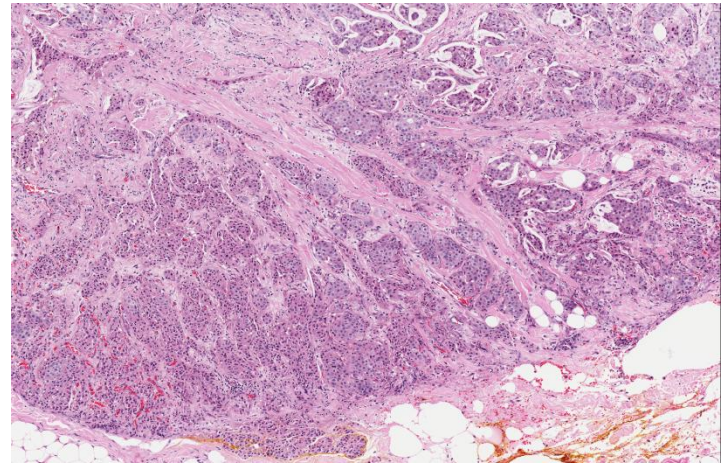
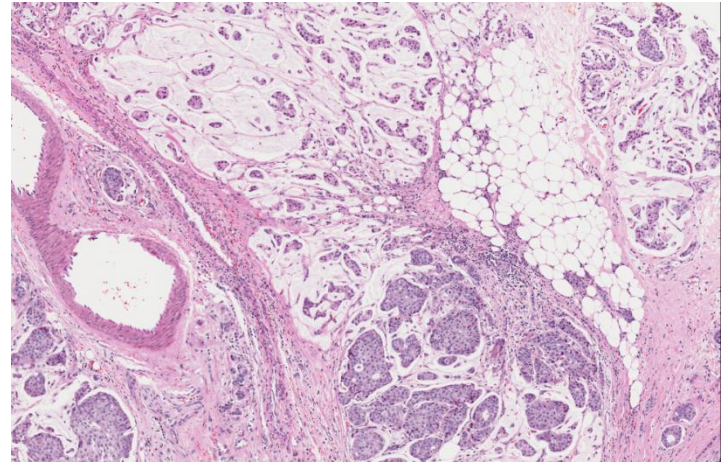
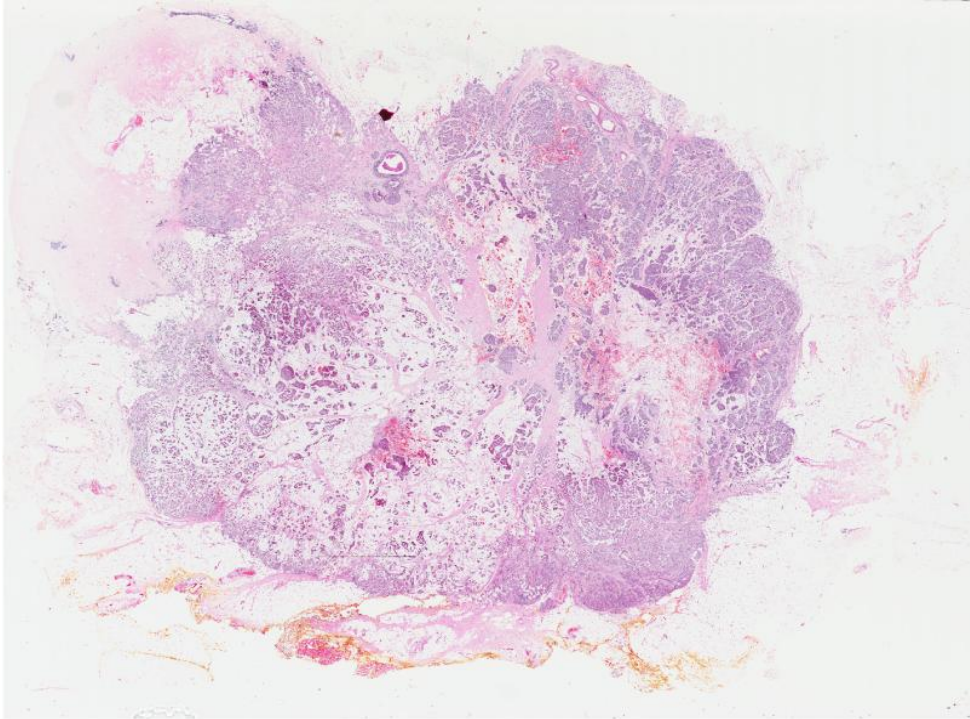


Set C.5

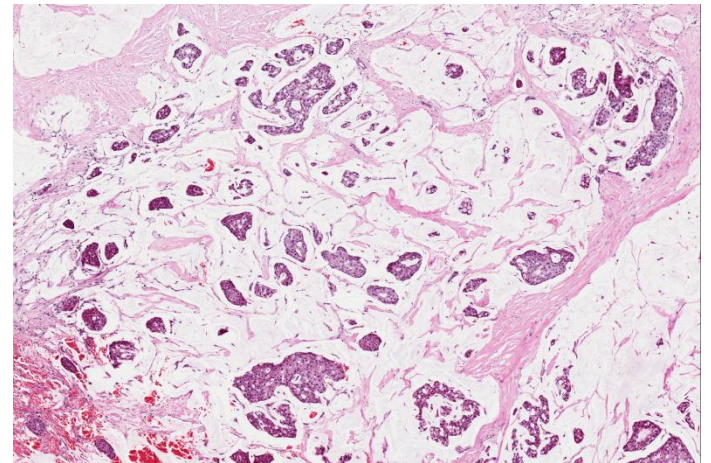
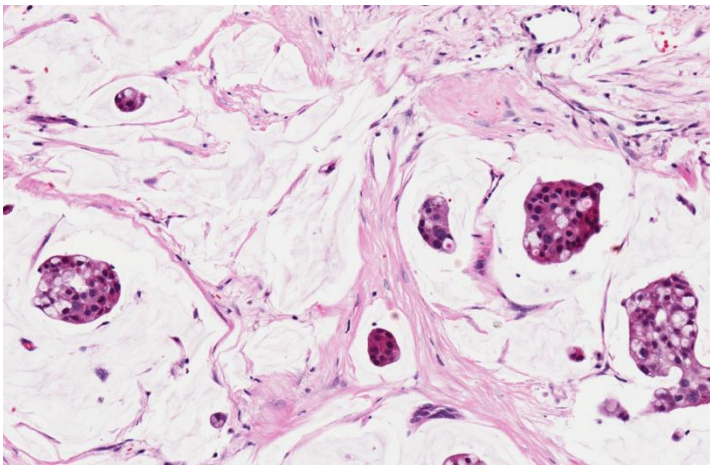
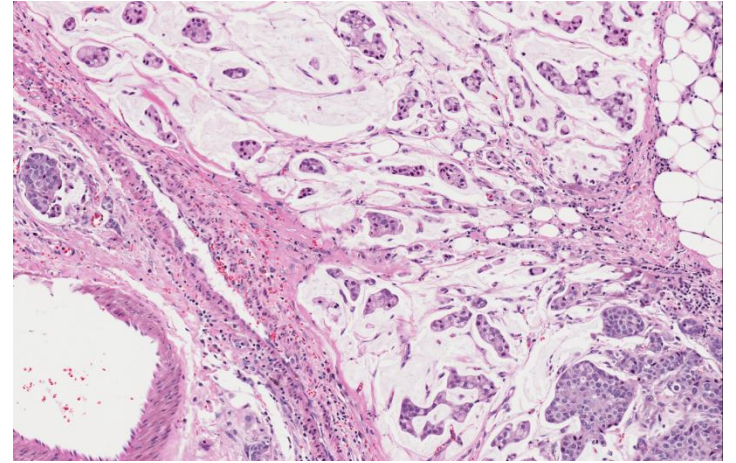
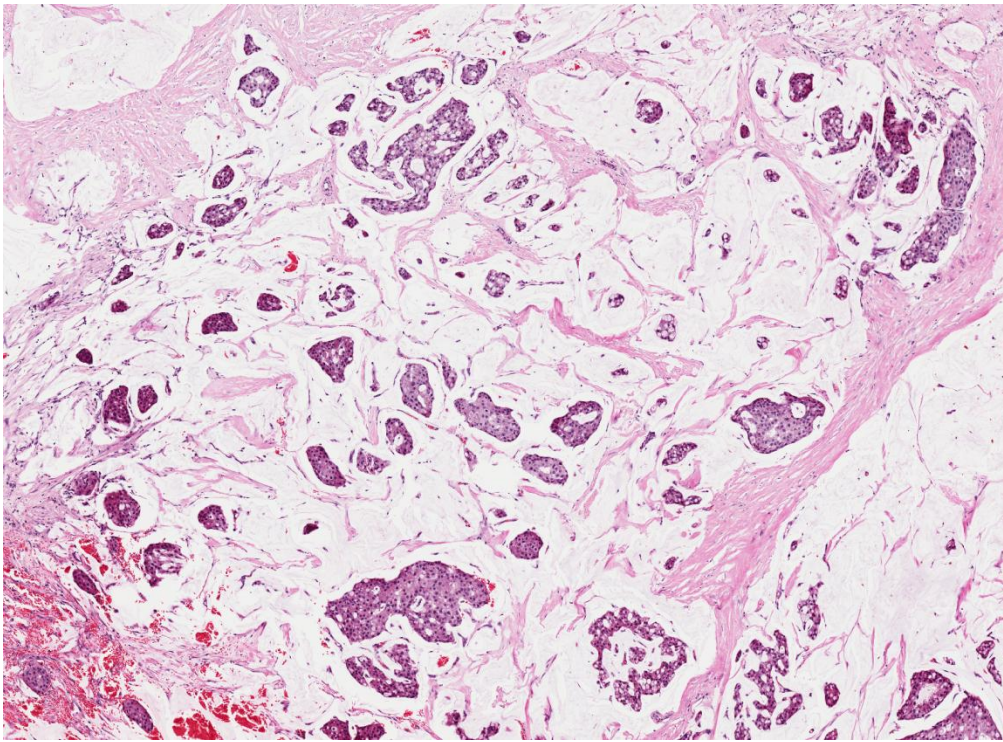
- 44 year old female presented with a 2.2cm breast mass.

(contributed by Dr Gary Tse)

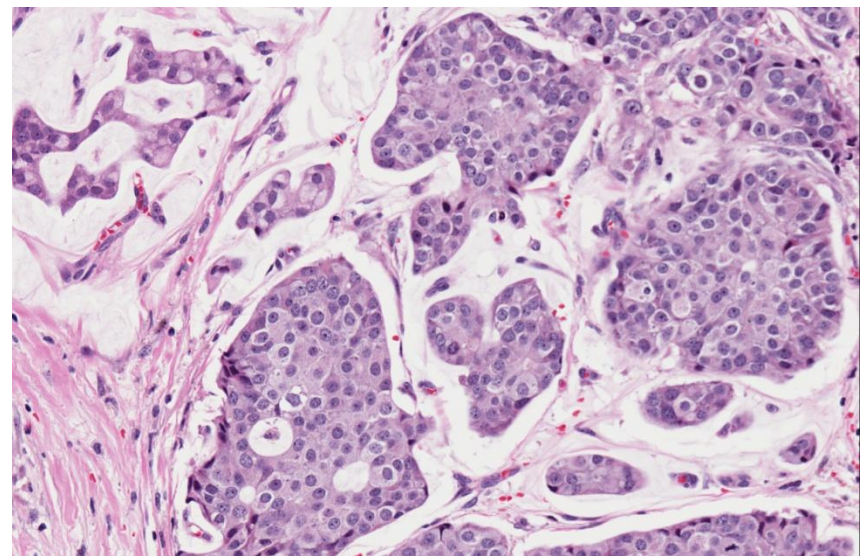
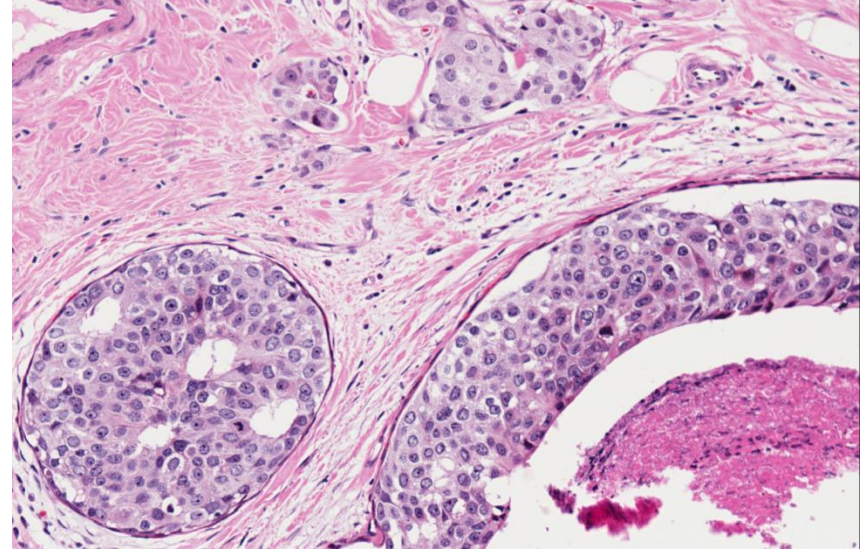
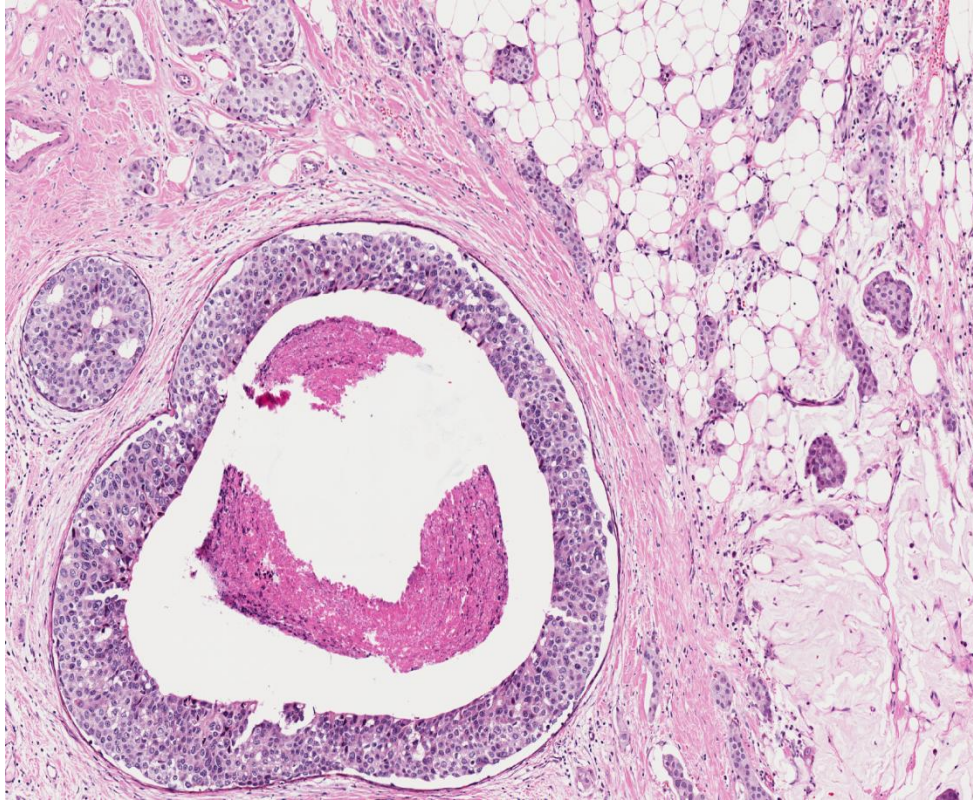
Set C.5



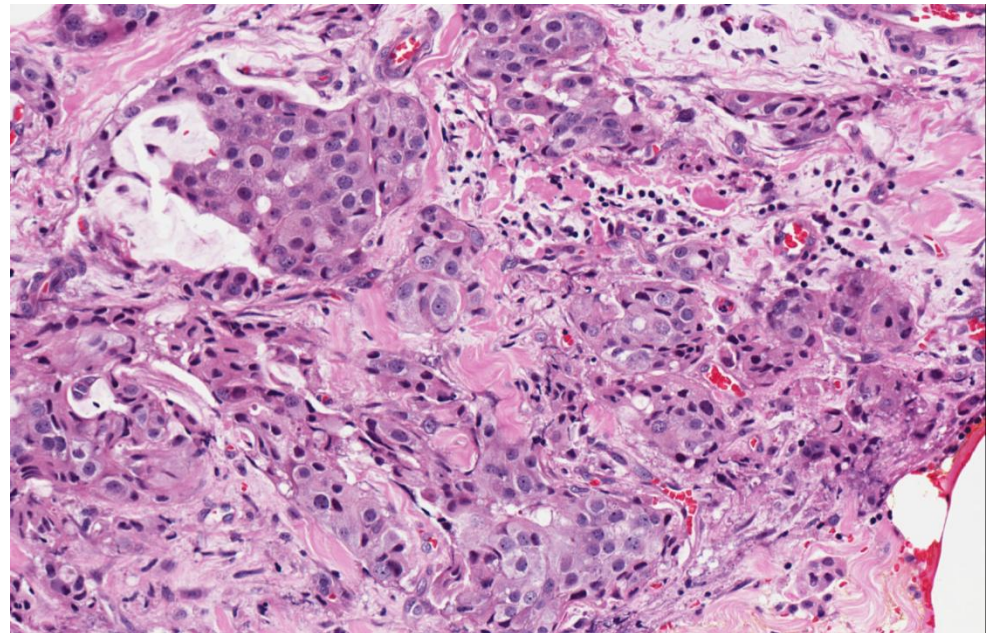
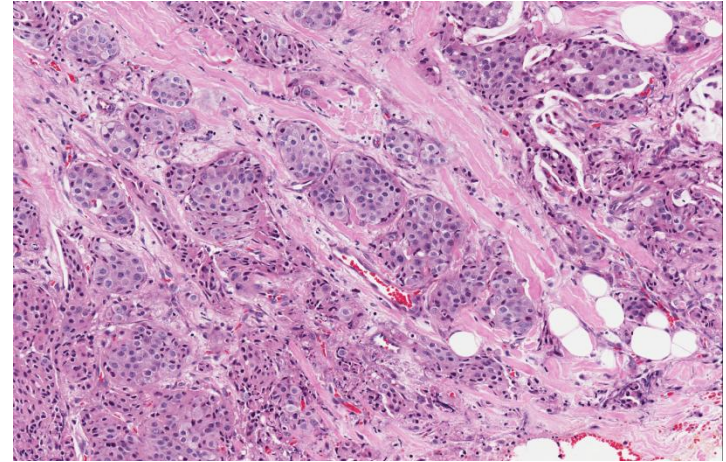
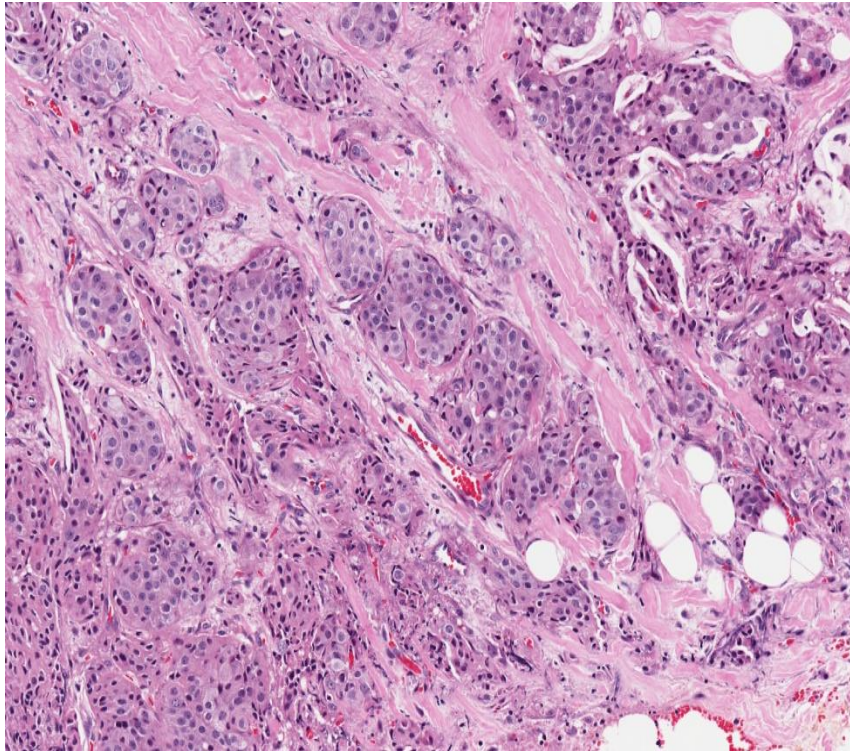
Set C.5



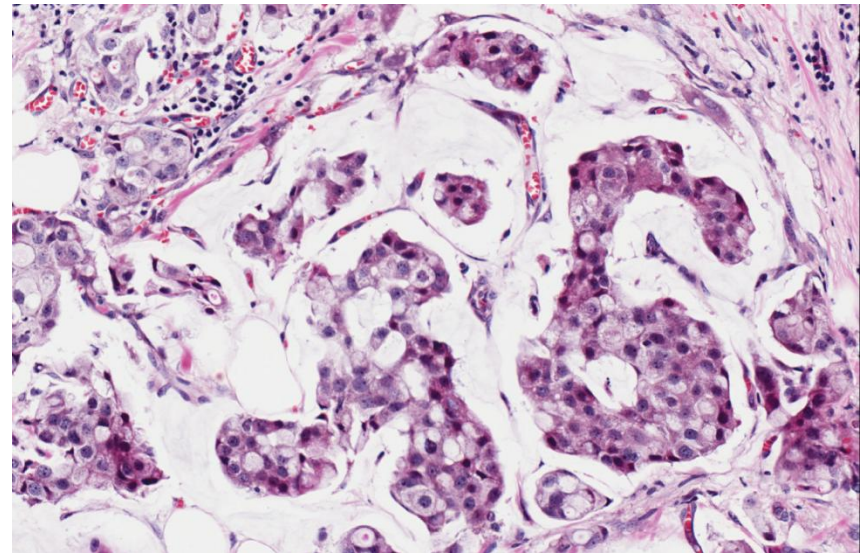
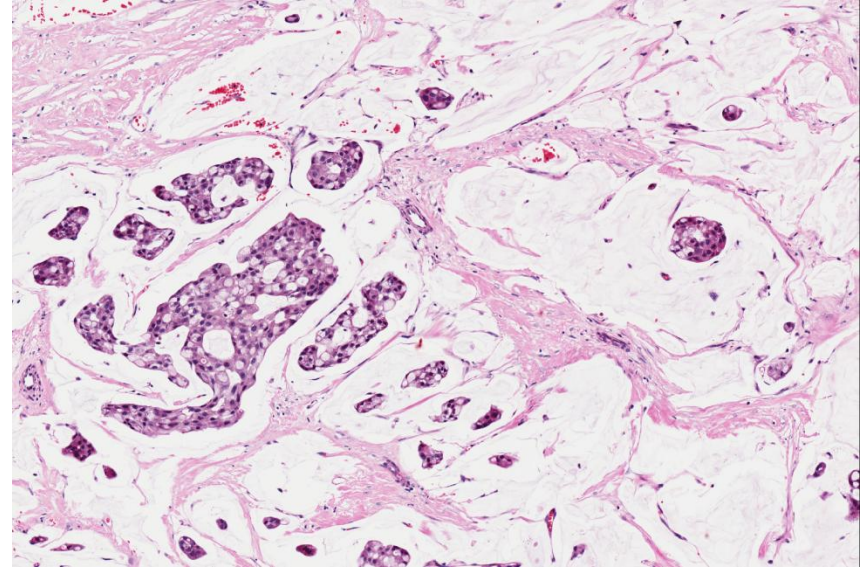
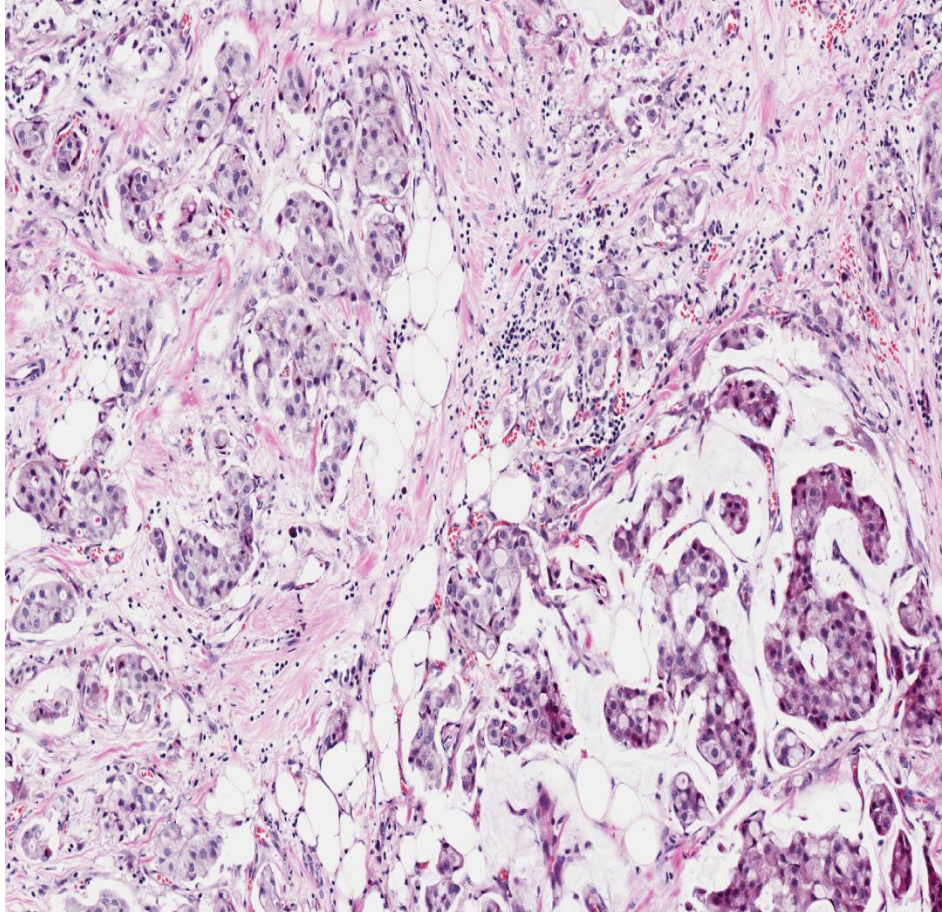
Set C.5



Set C.5



Set C.5



- Invasive carcinoma with mixed mucinous and ductal features.
- Possible neuroendocrine differentiation:
 - Need to carry out immunohistochemical stains.

Learning points

- Diagnosis of pure mucinous cancer.
- Diagnosis of mixed mucinous-ductal cancer.
- Recognition and suspicion of NE differentiation.