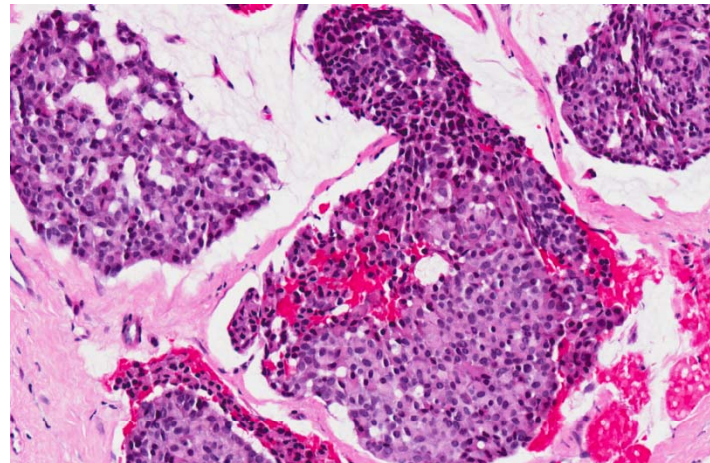
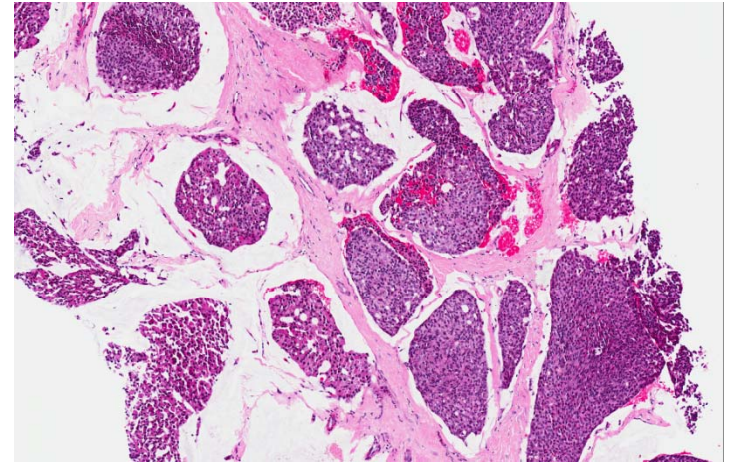
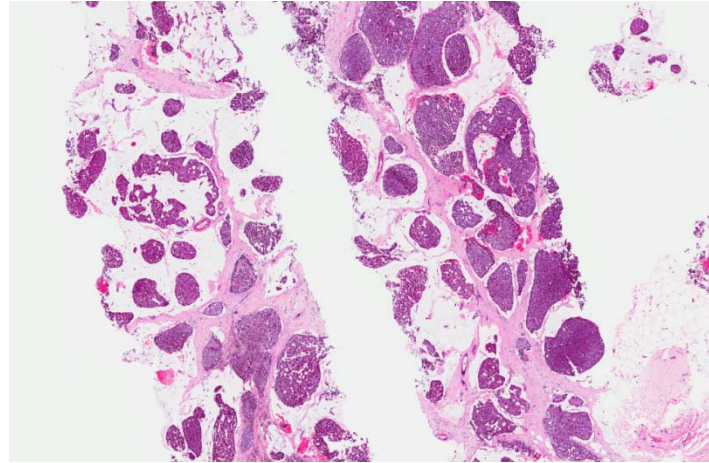
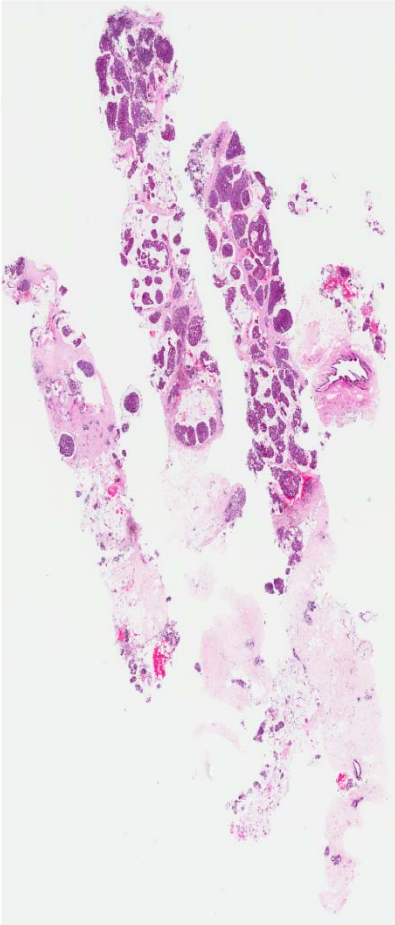


Set C.2

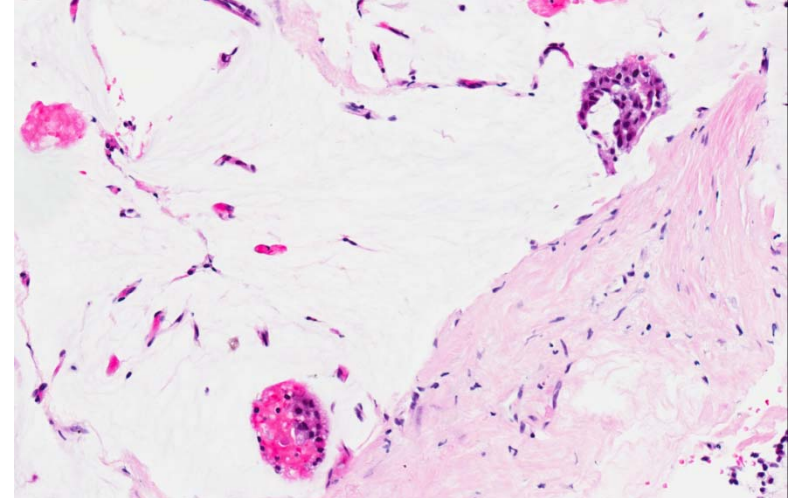
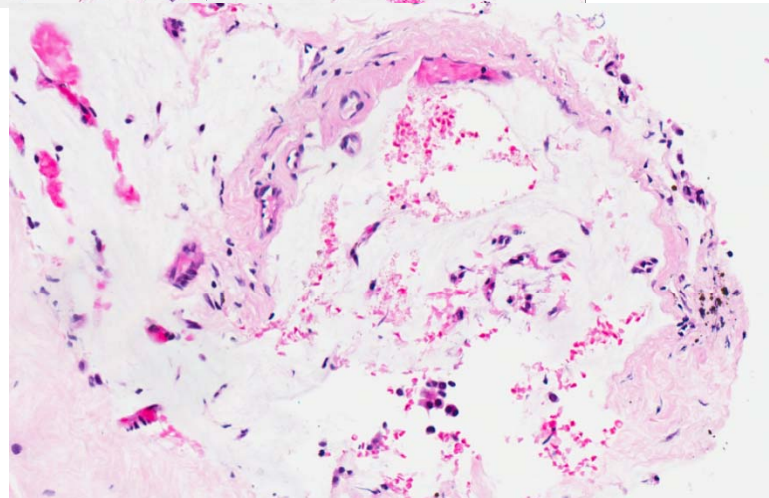
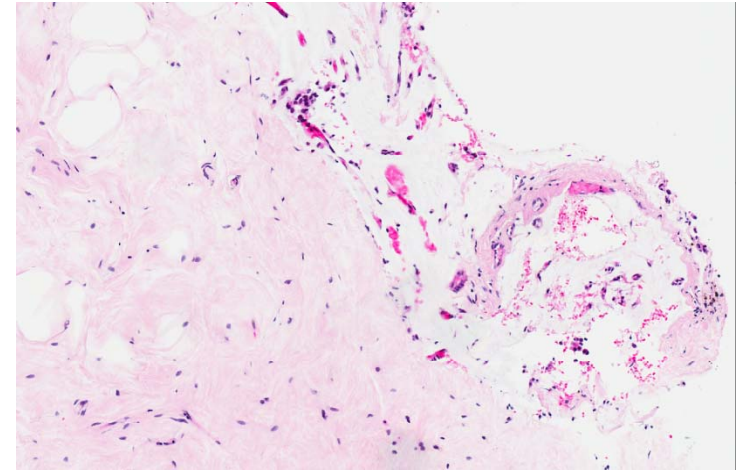
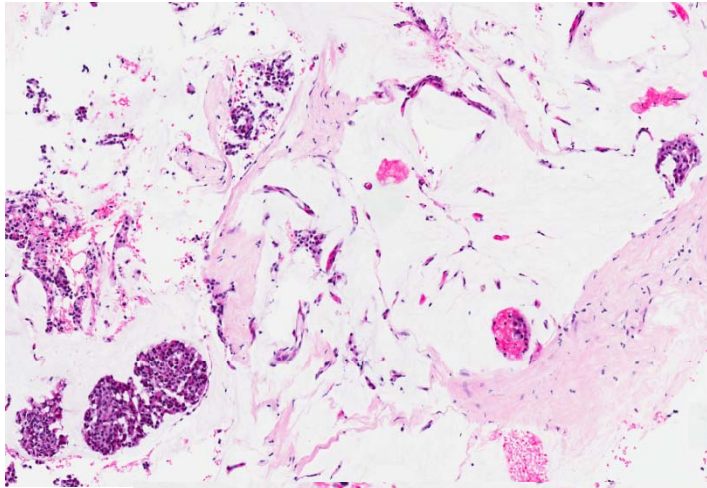
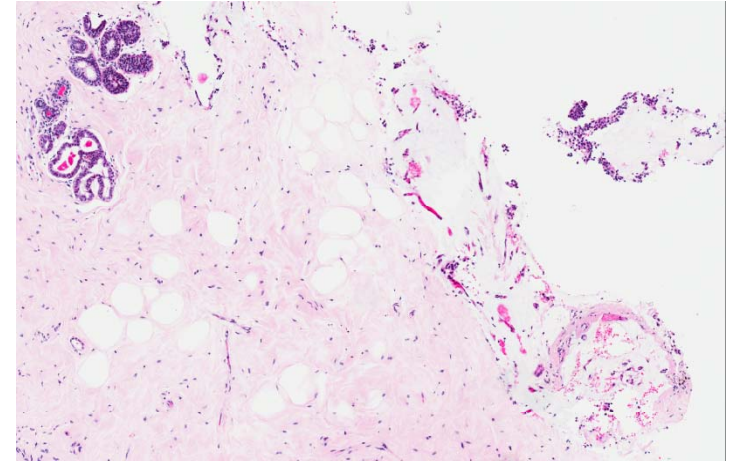
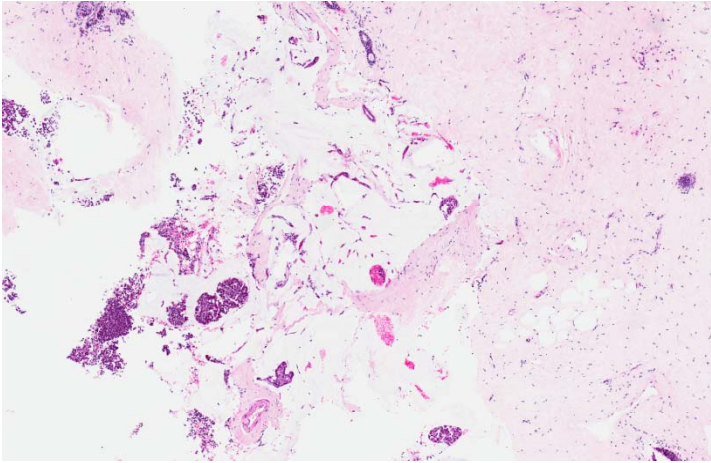
- 70 year old female presented with a 1.5cm breast mass, clinically described as 'moderately suspicious'.

(contributed by Dr Gary Tse)

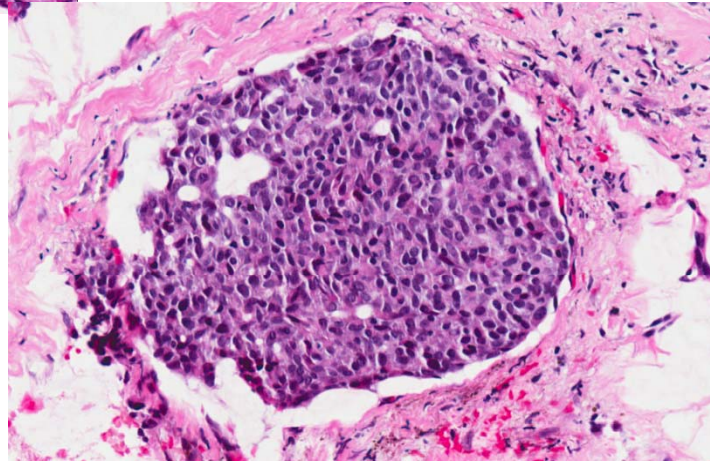
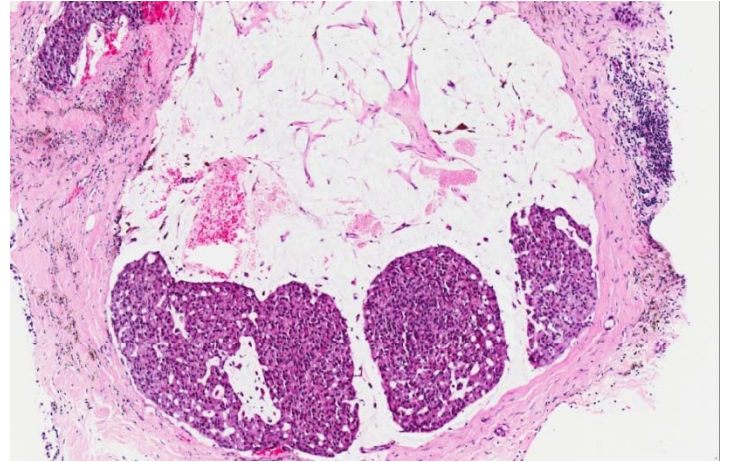
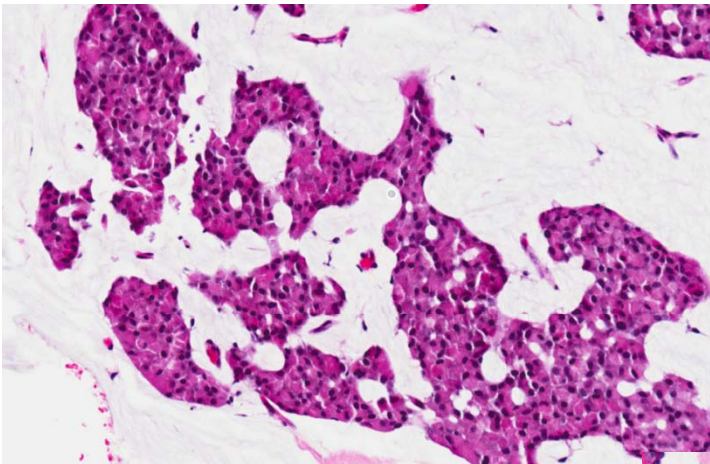
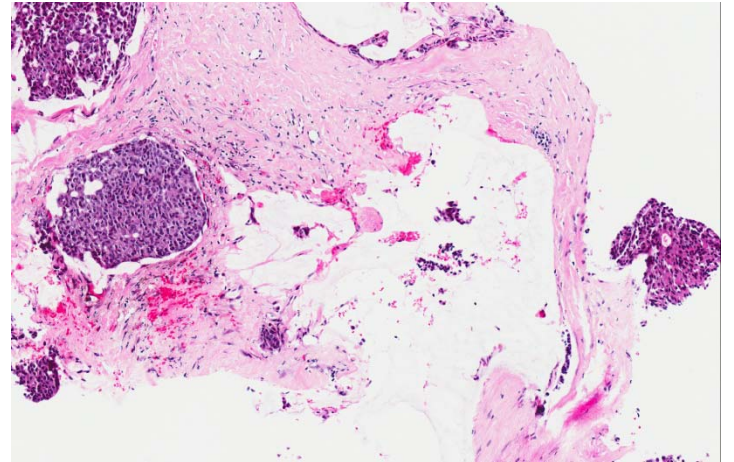
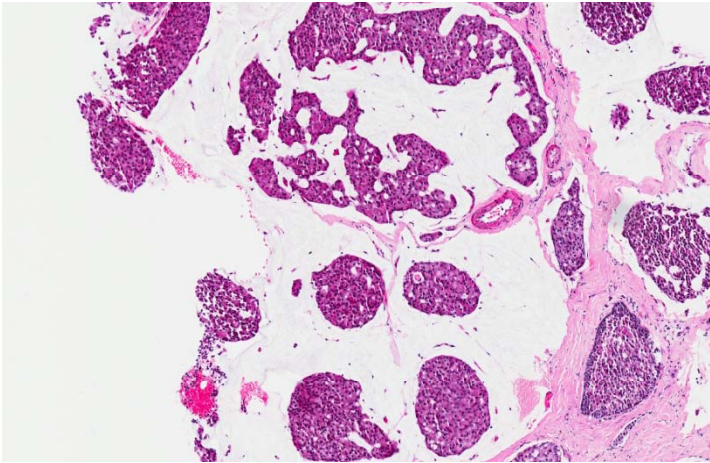
Set C.2



Set C.2



Set C.2



- Invasive mucinous carcinoma with neuroendocrine features.

Learning points

- Definition of invasive mucinous carcinoma.
- Recognition of neuroendocrine features.
- Identification of cell types observed in neuroendocrine tumours:
 - plasmacytoid cells.
 - spindle cells.
 - rare signet ring cells.