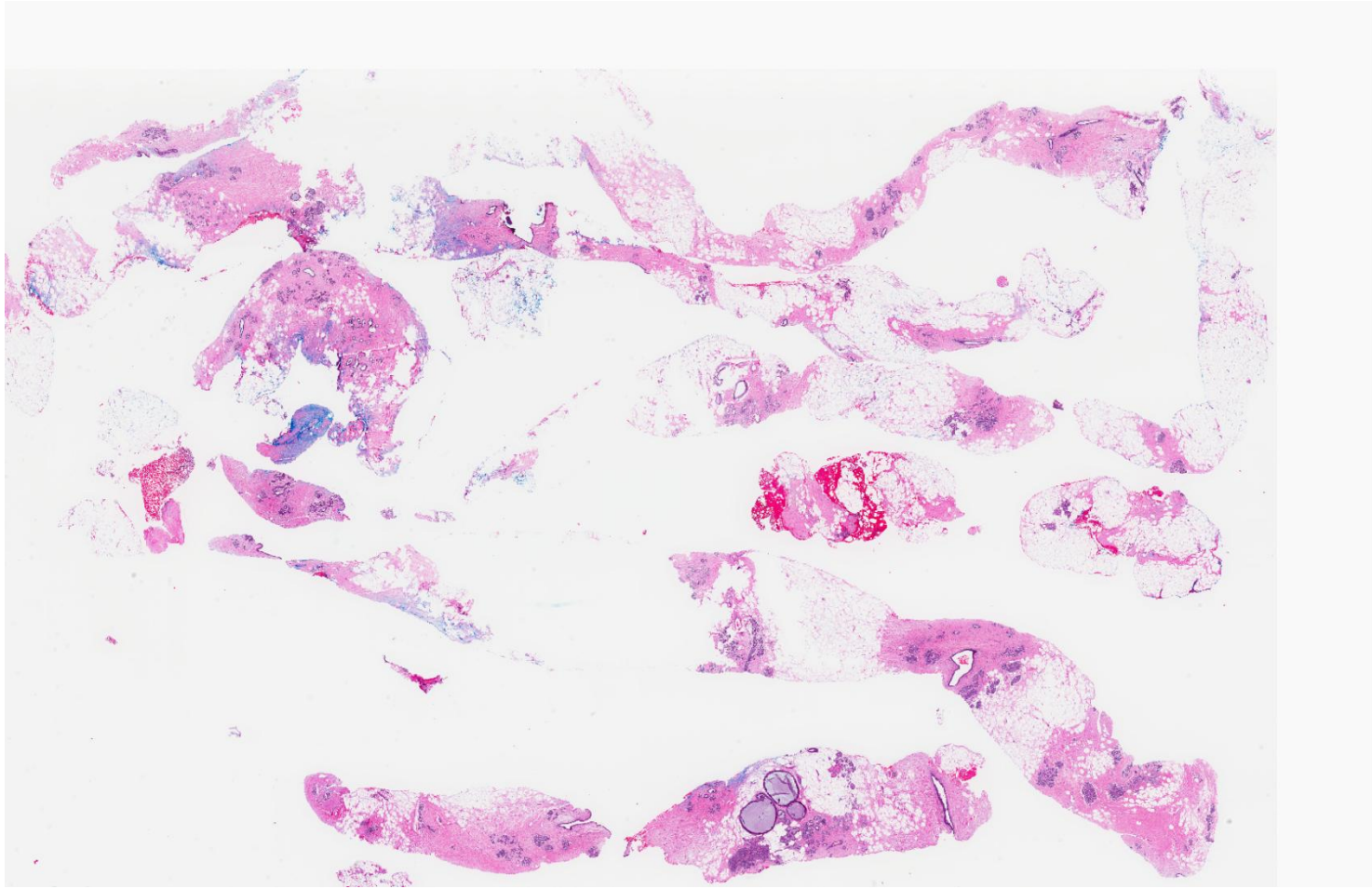
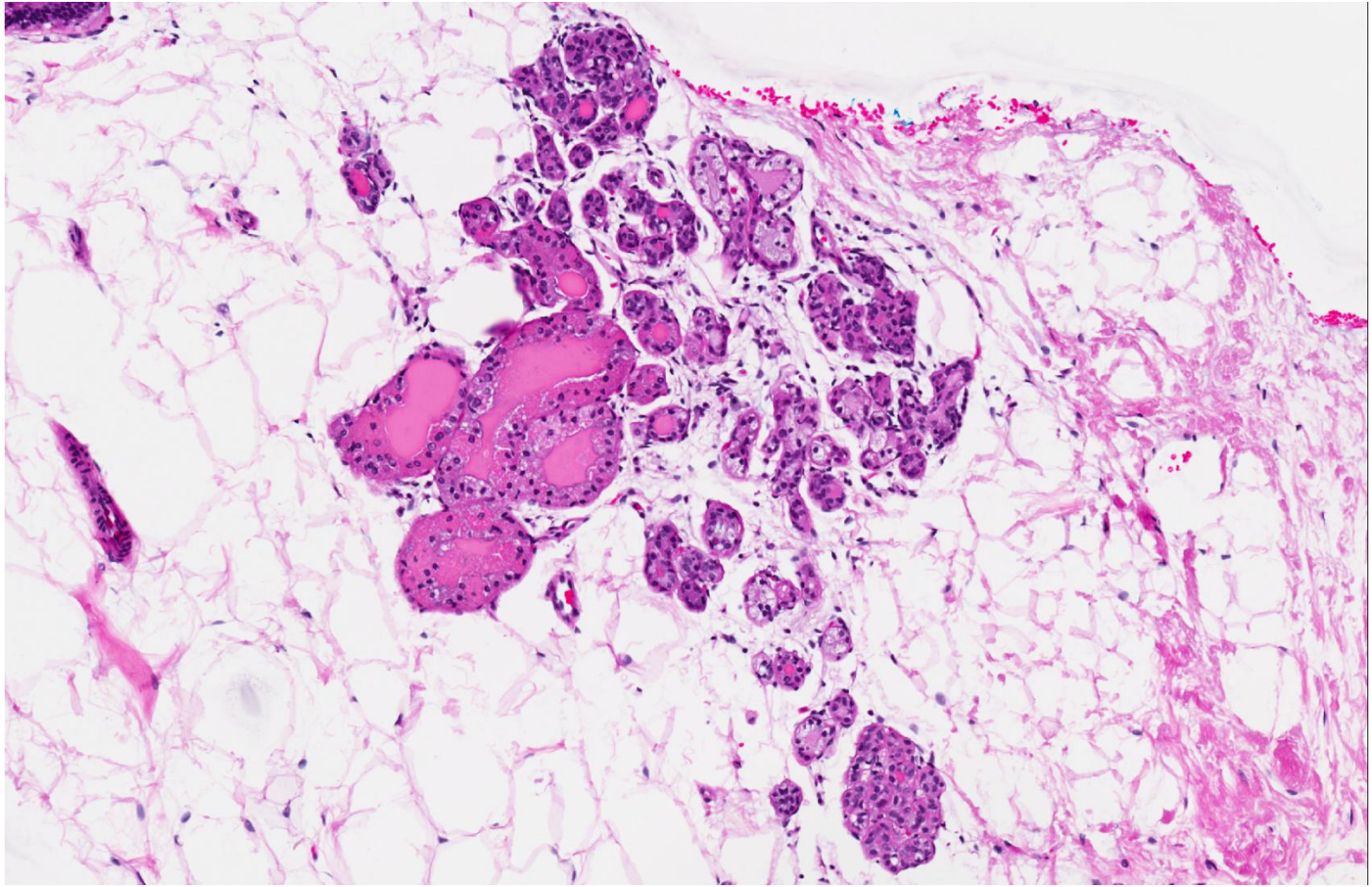
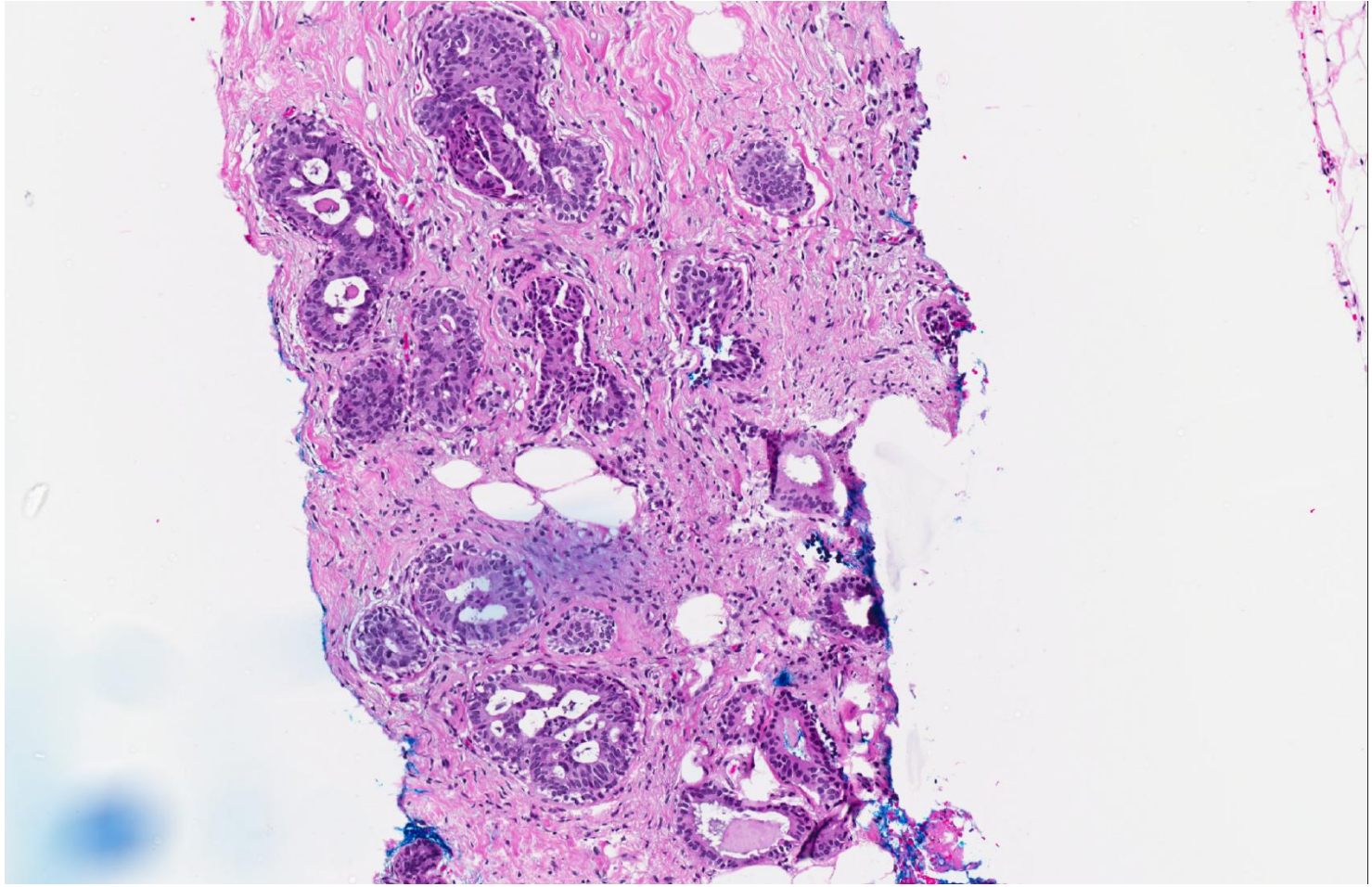
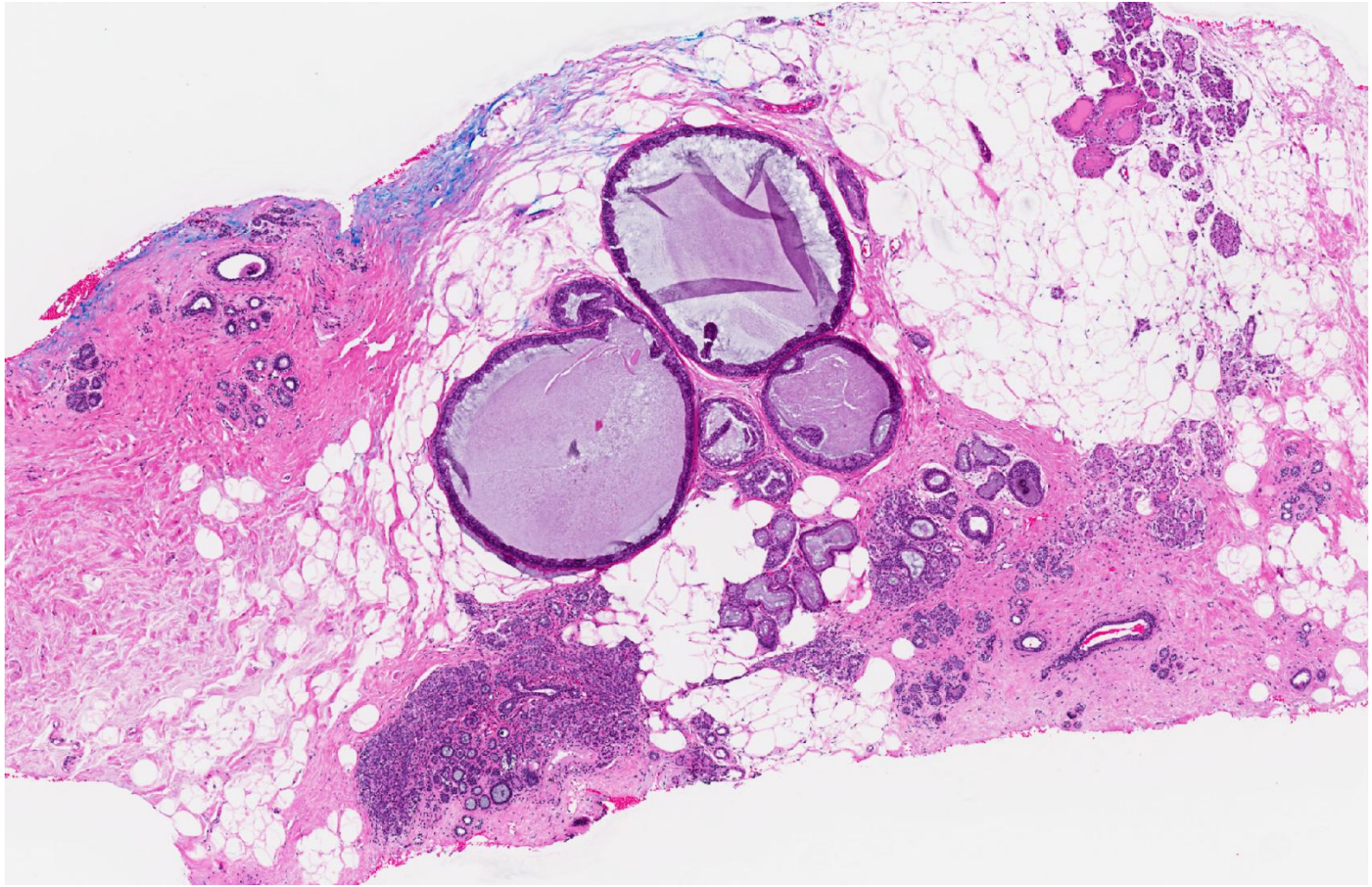


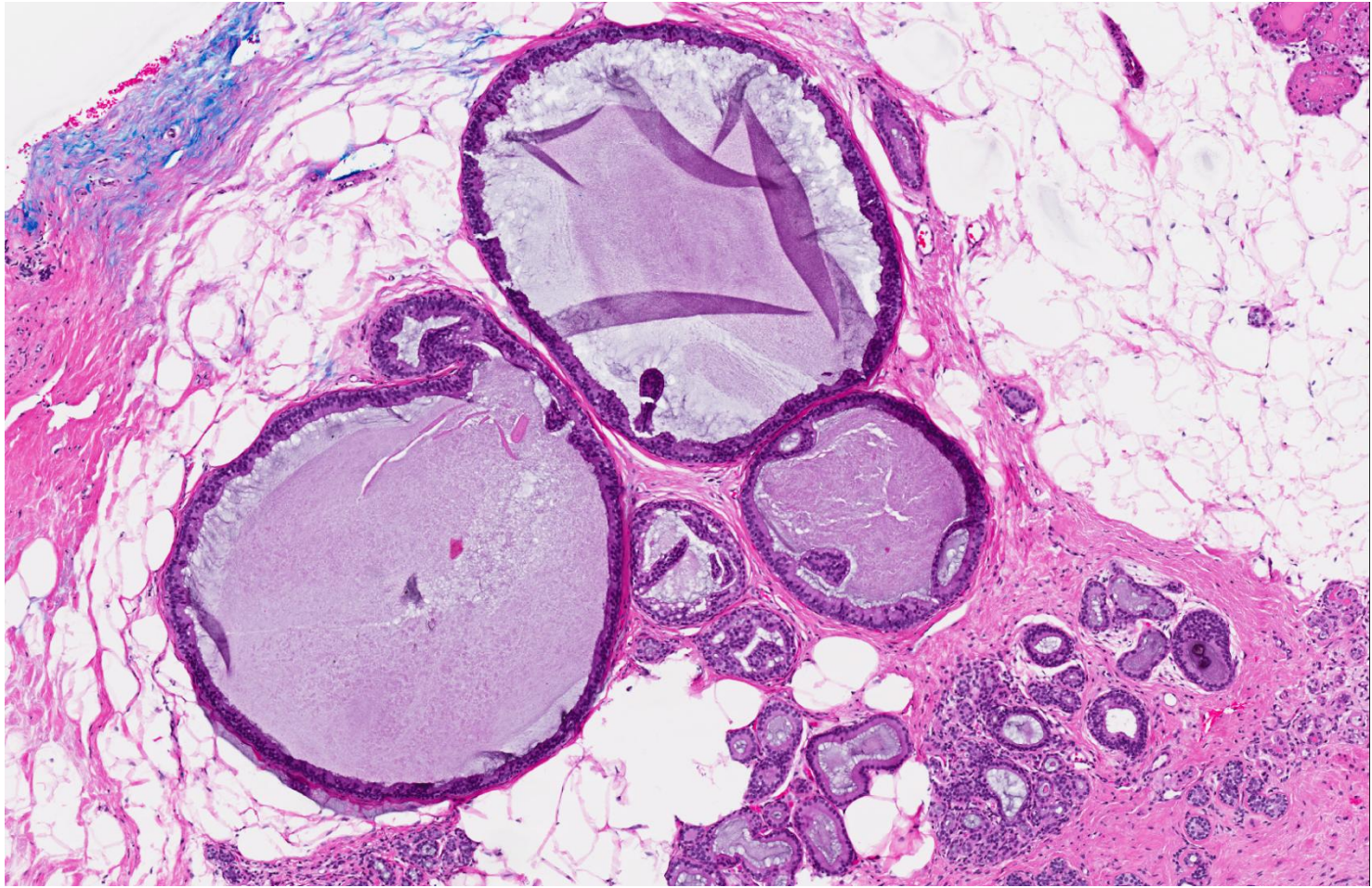
- Set B.9
- 54 year old Chinese female underwent stereotactic mammotome biopsies for screen detected calcifications of the right breast.

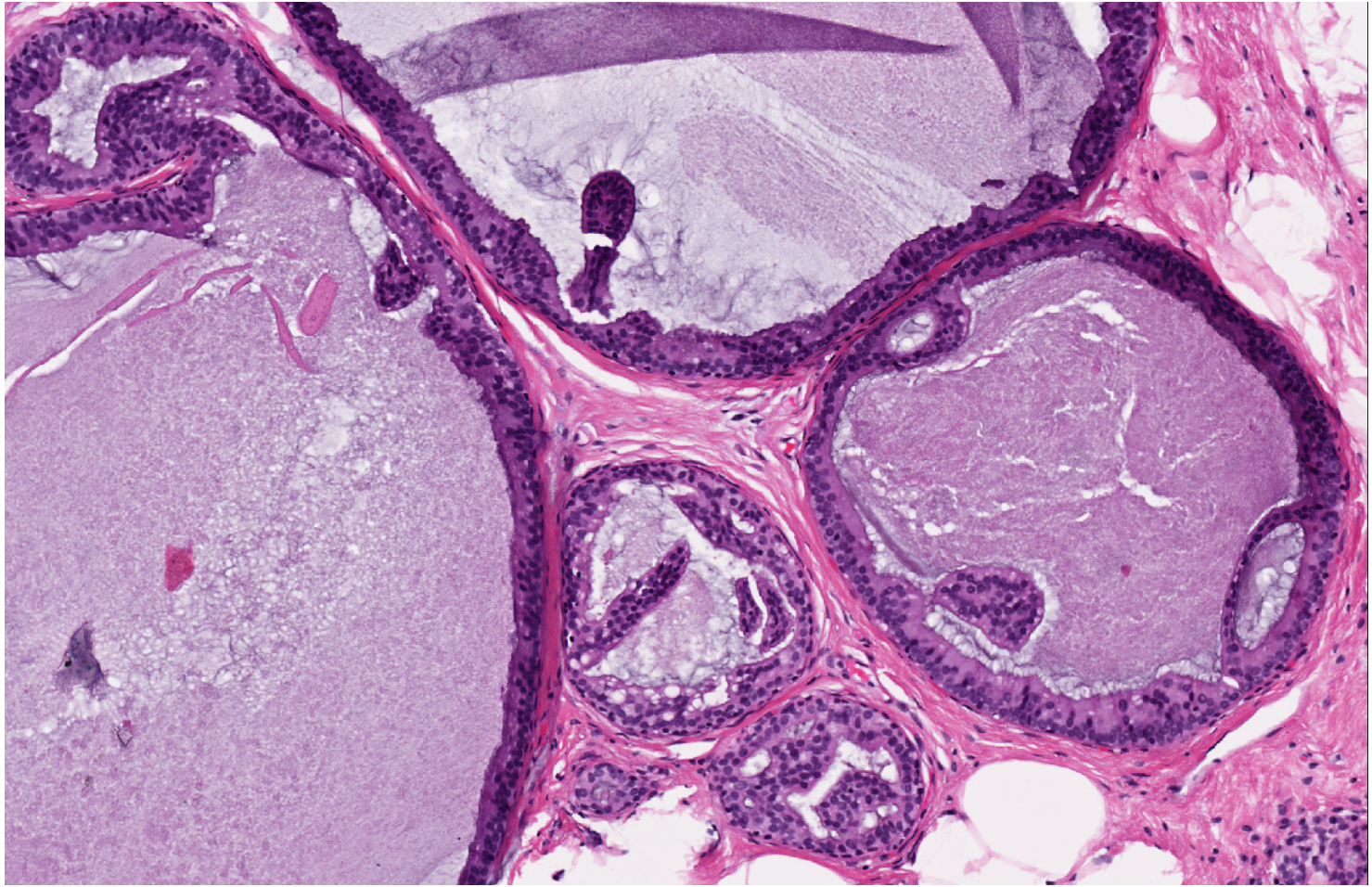


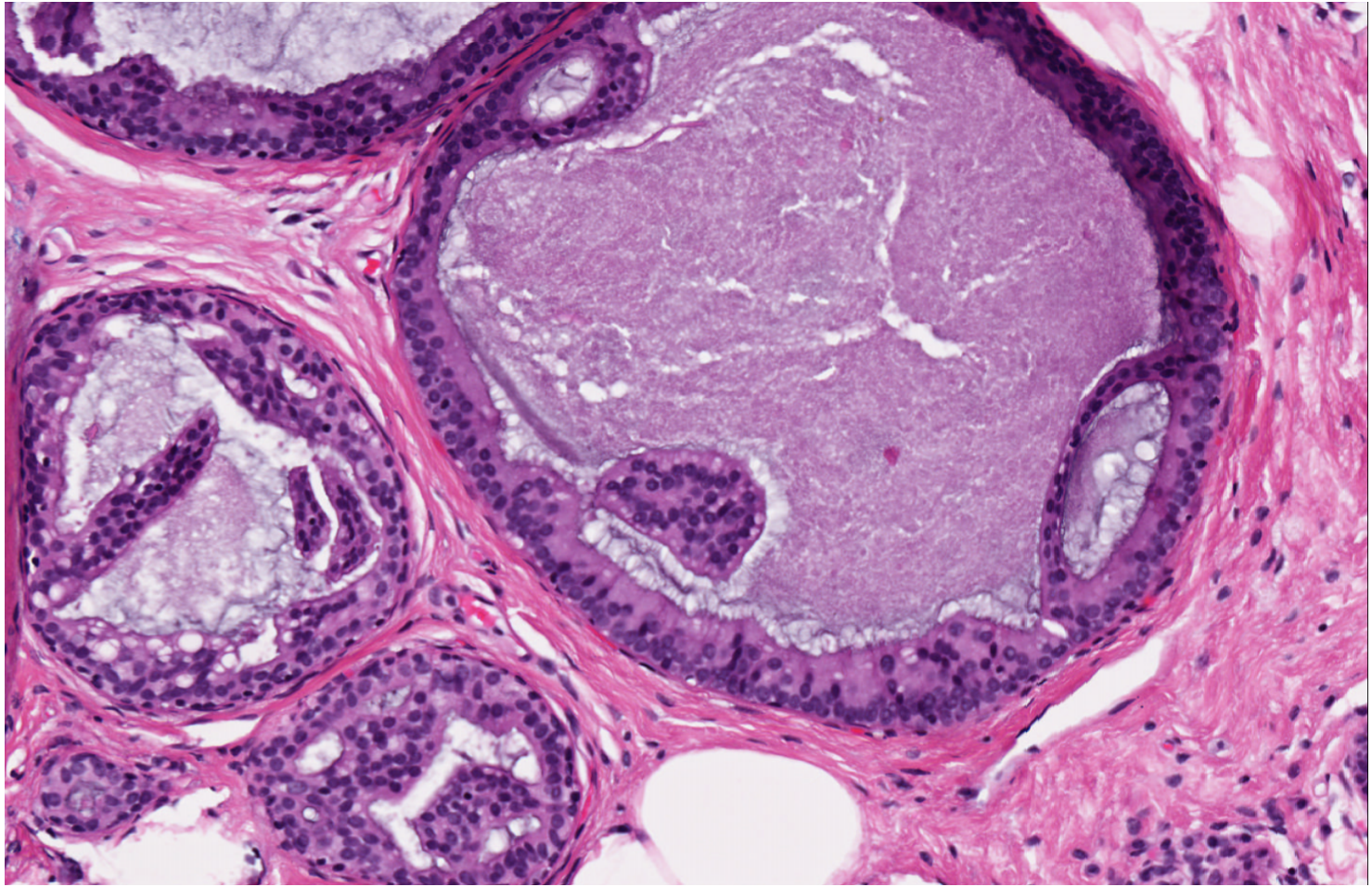


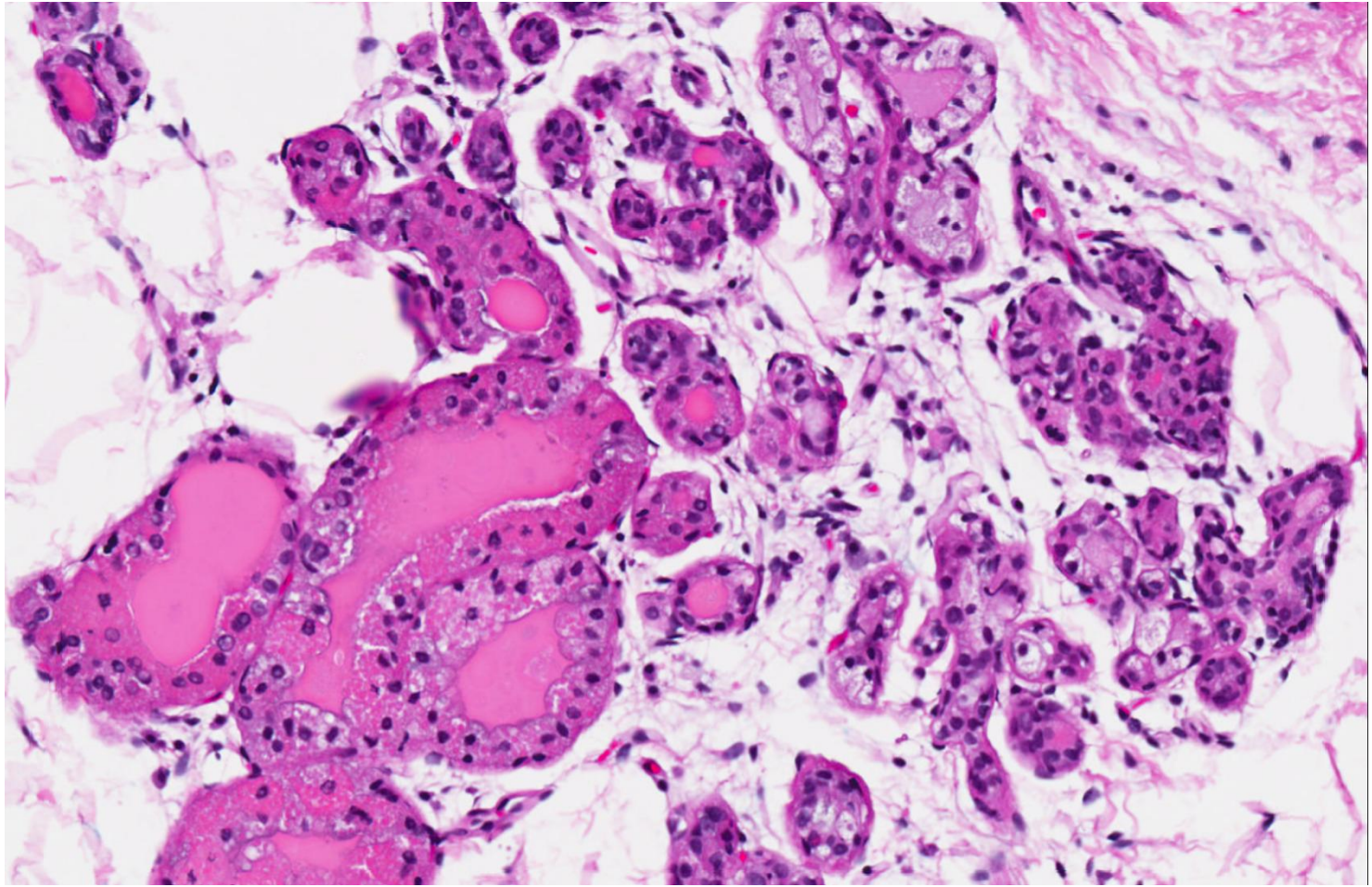


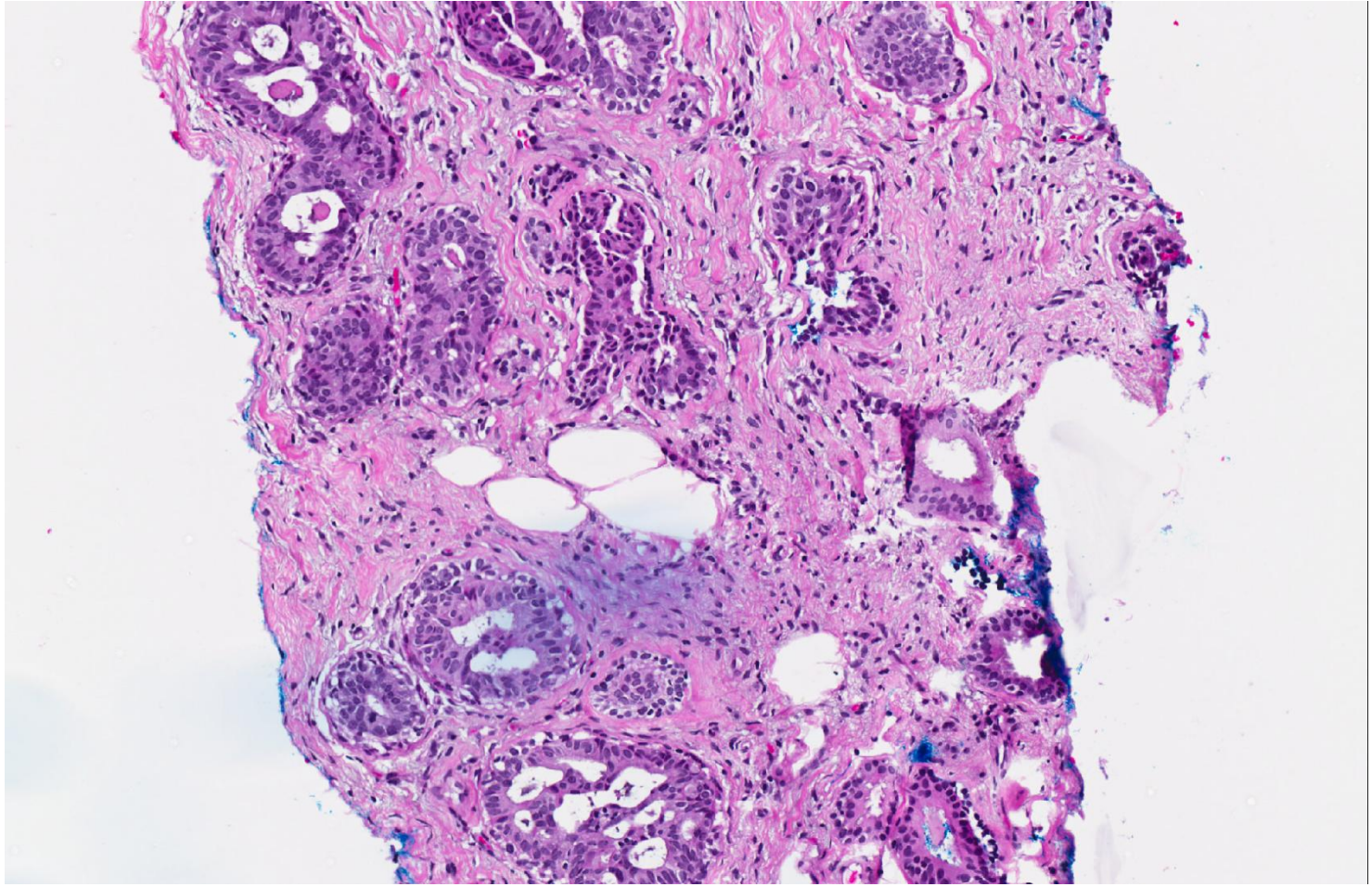


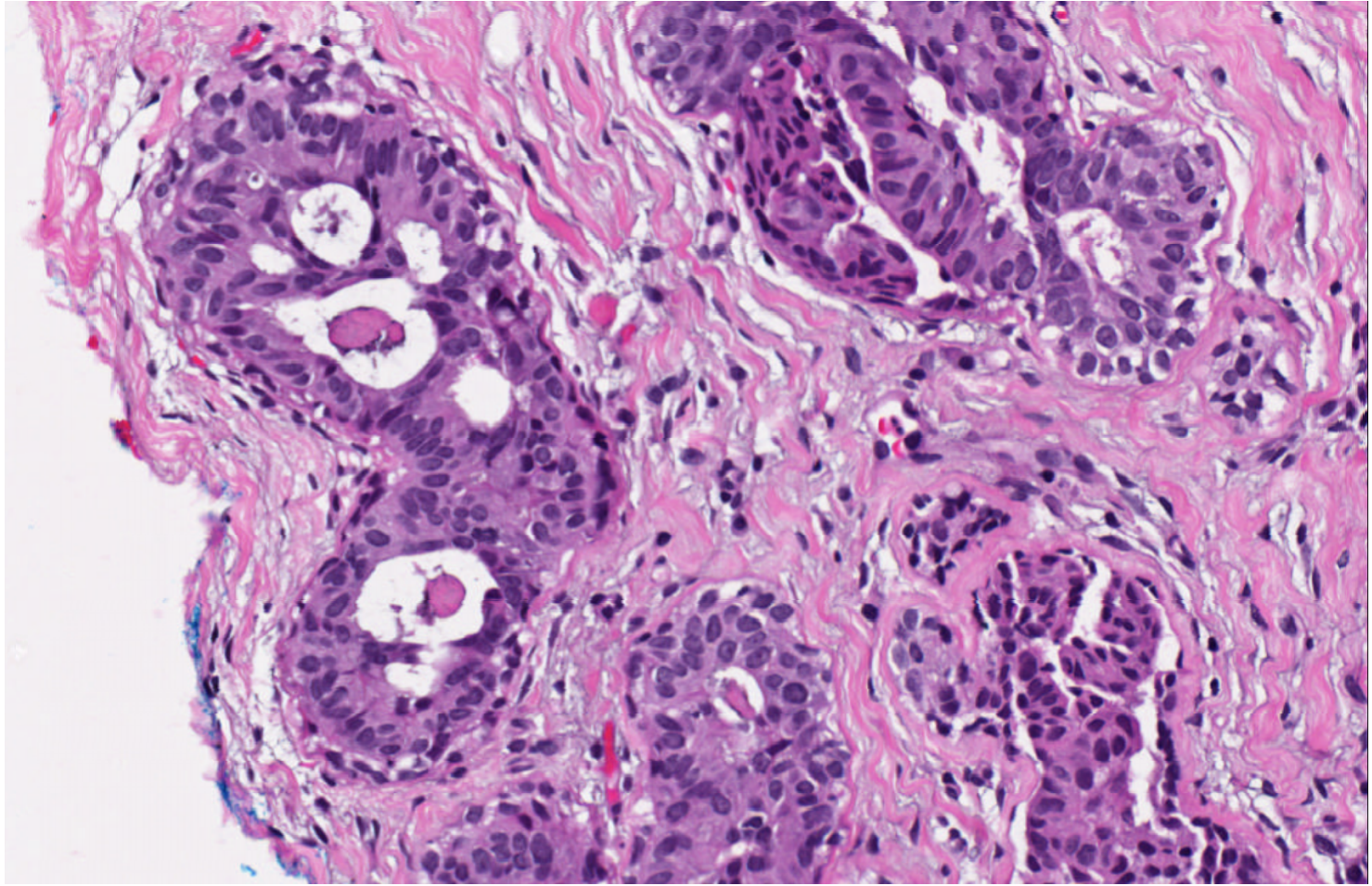


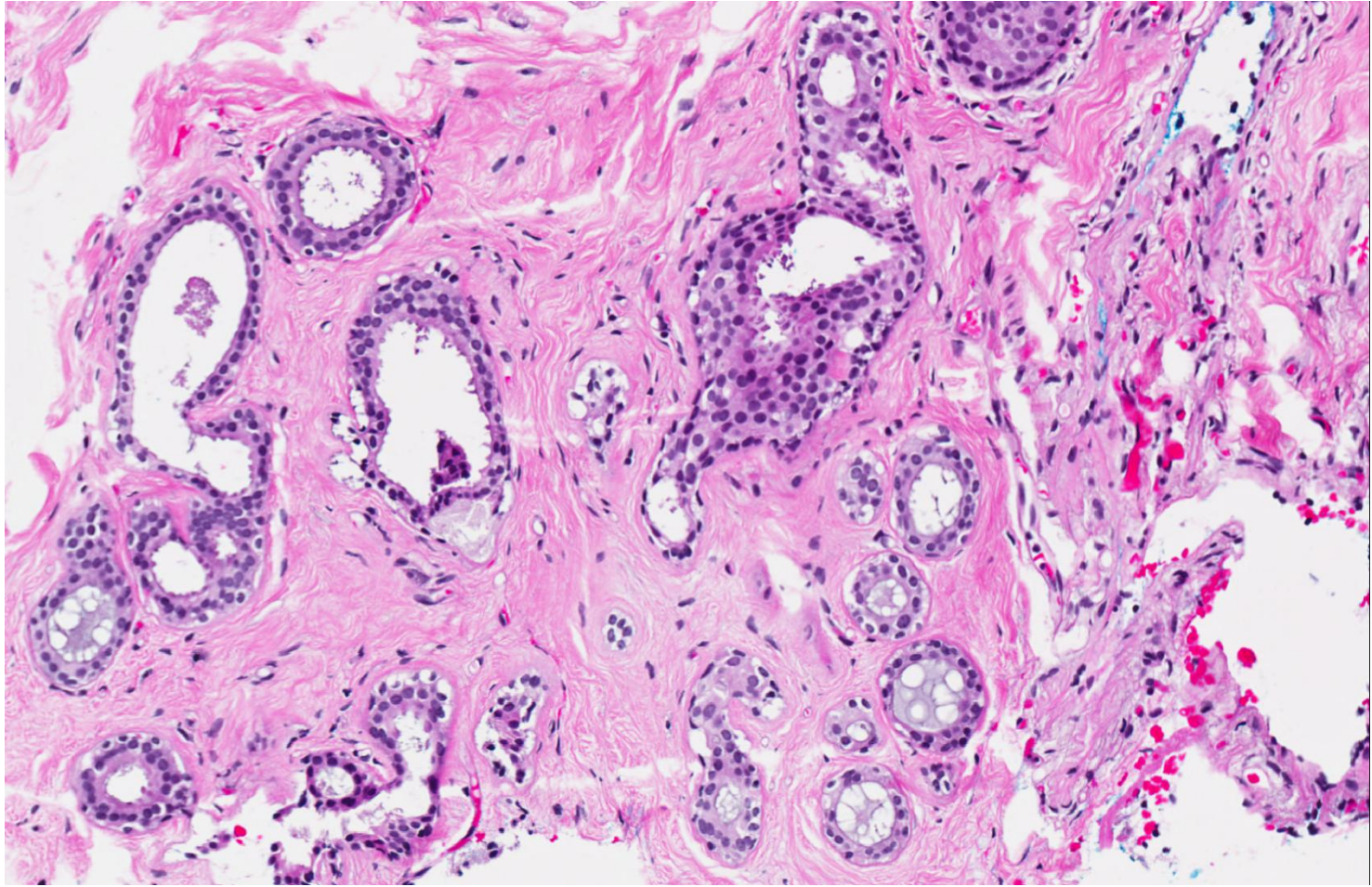


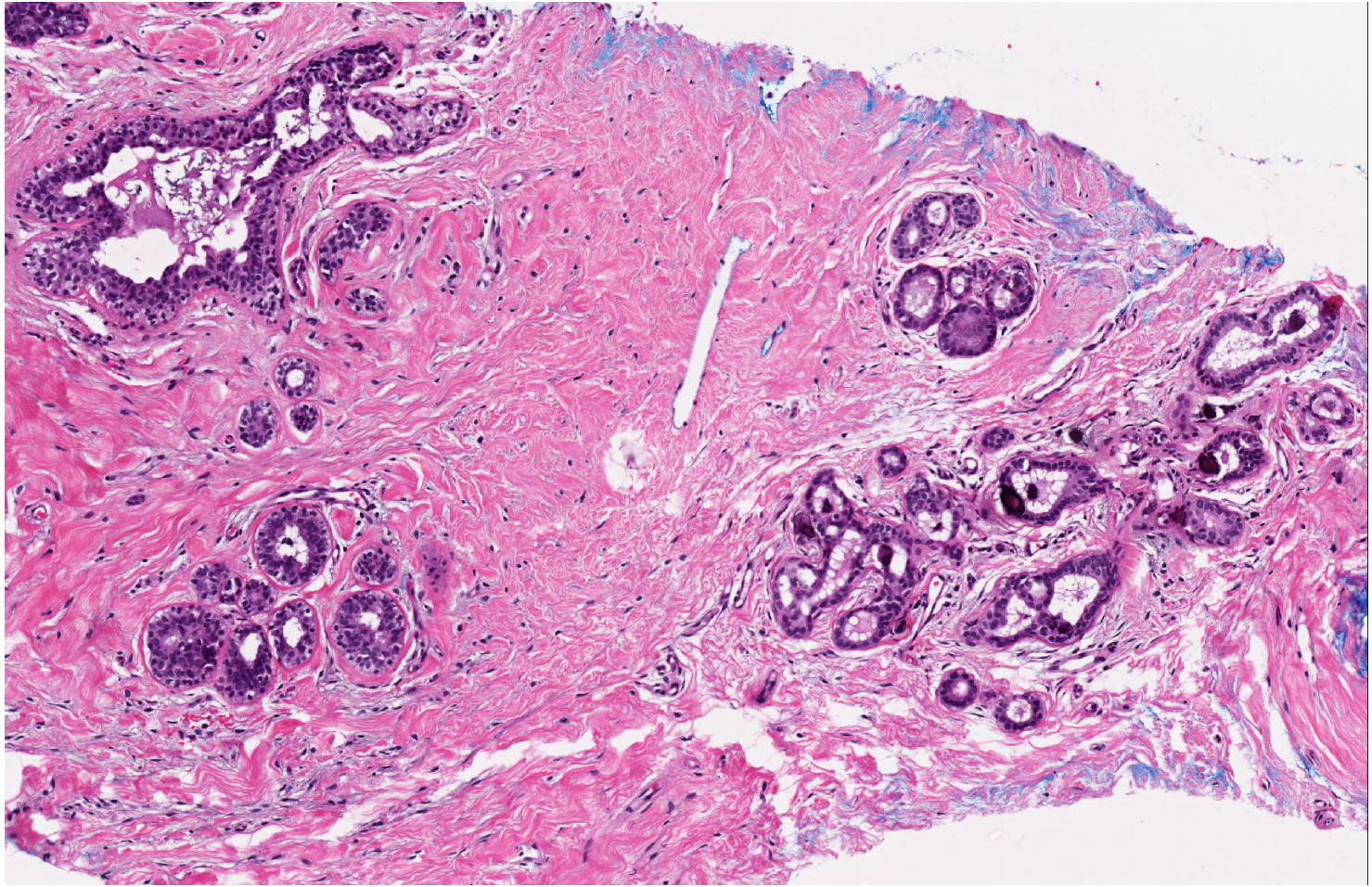


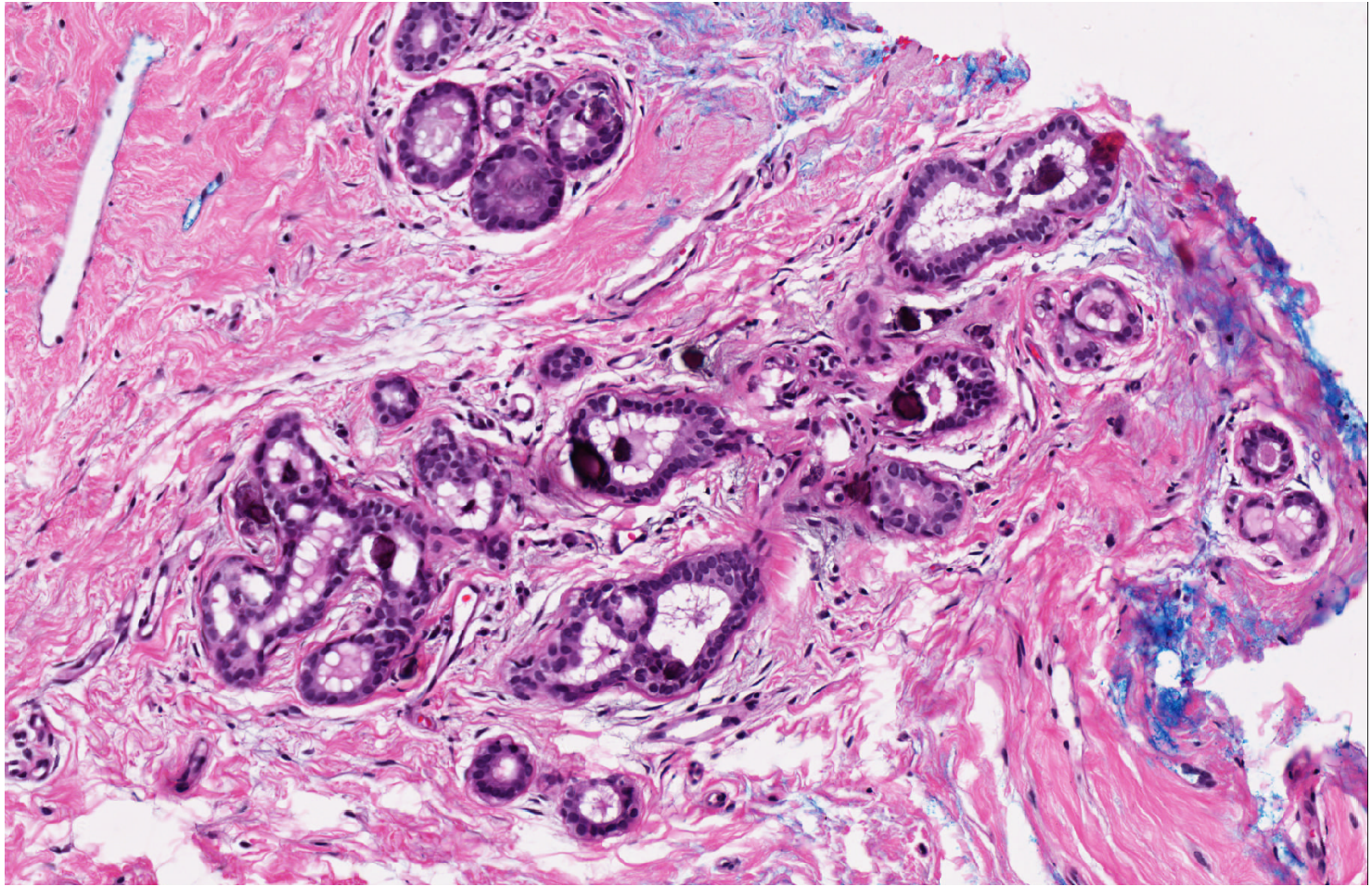


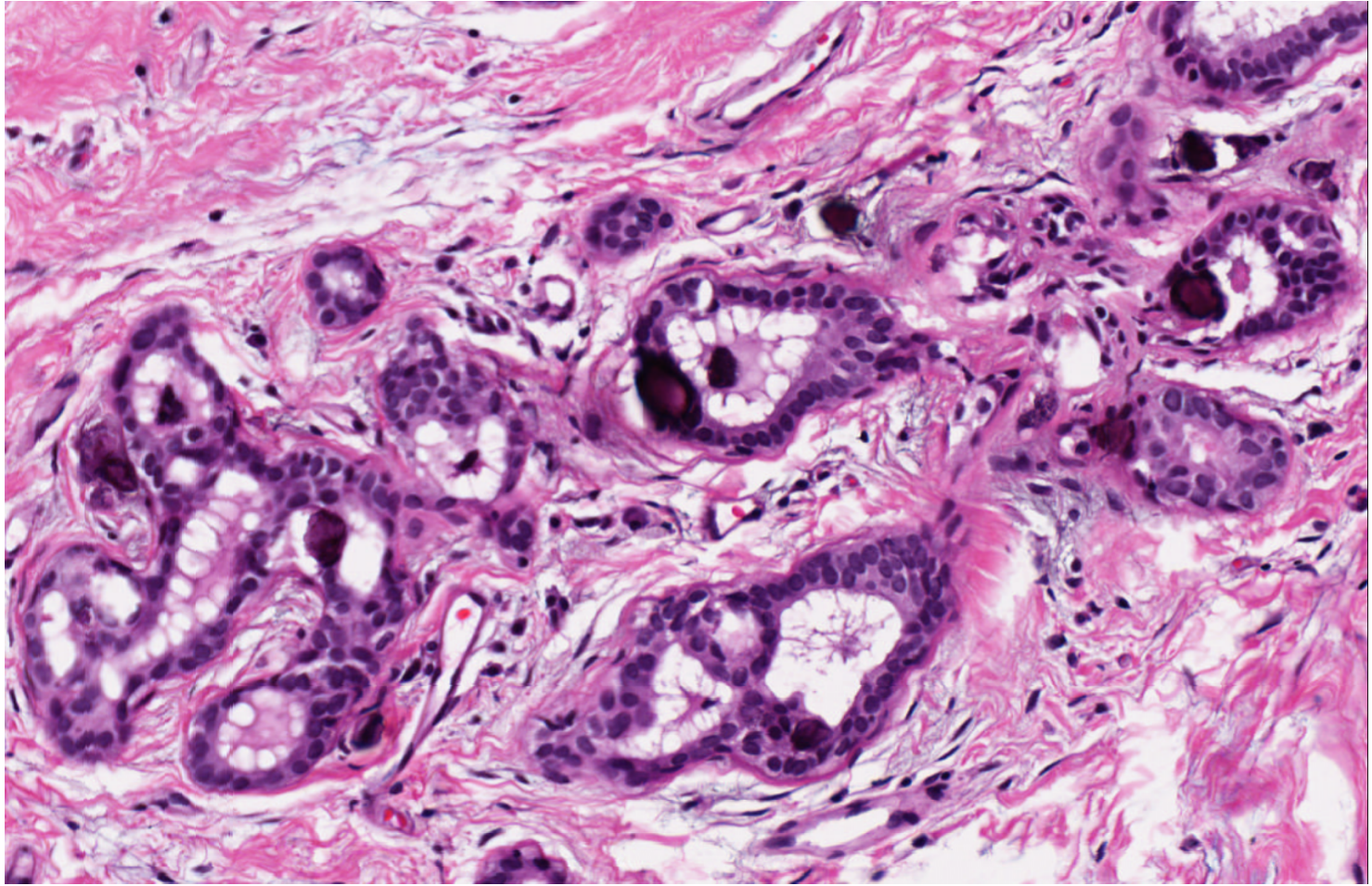


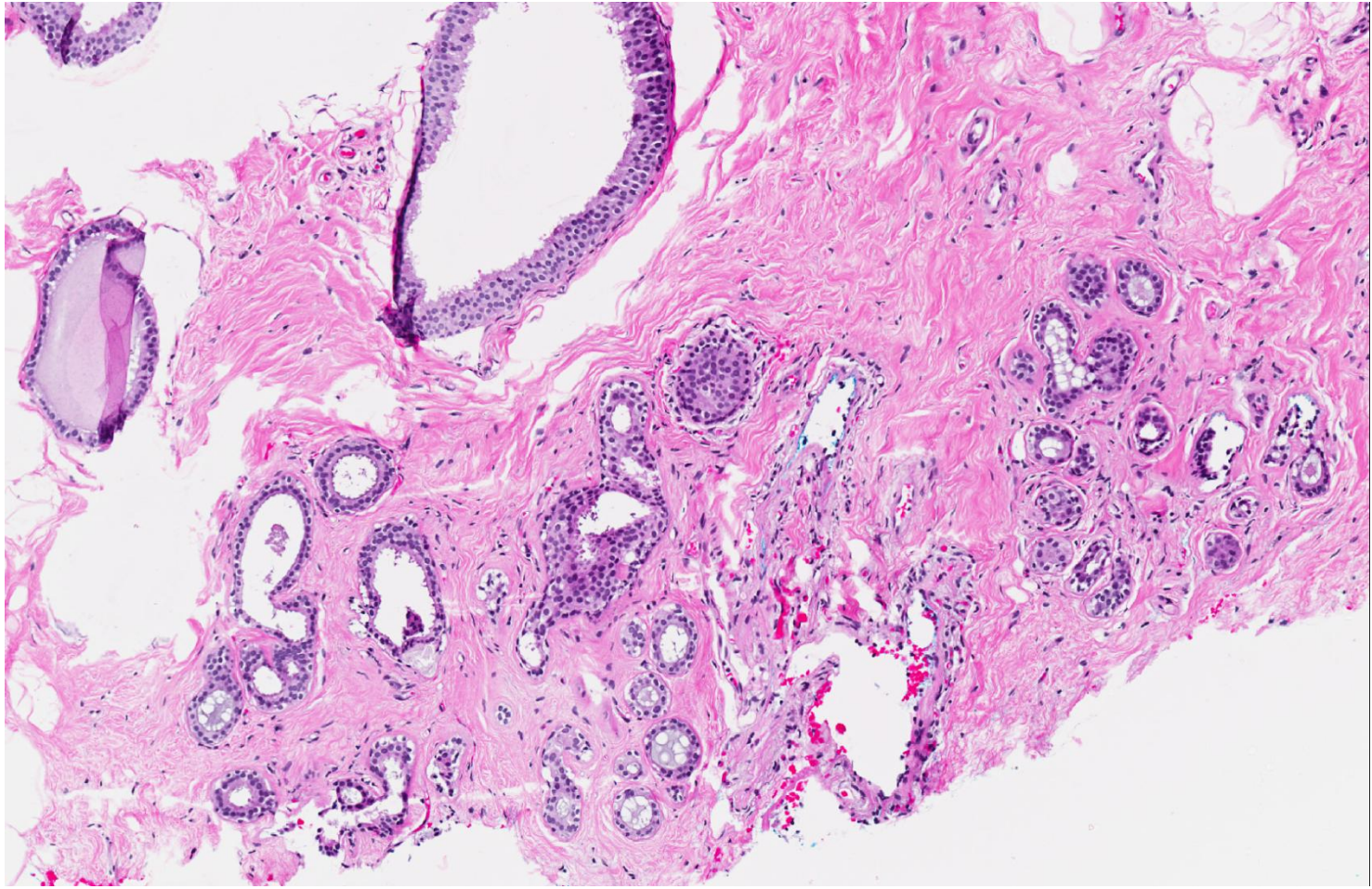












- ADH and FEA on different cores.

Atypical ductal hyperplasia on core biopsy

- Requires surgical excision if diagnosed on core biopsy.
- DCIS or invasive cancer in 33% to 87% of cases on open biopsy.
- Under-staging rates dependent on biopsy gauge.

ADH Underestimates with 11-Gauge Vacuum-Assisted Breast Biopsy Device

Source and Year	ADH Underestimates (%)	Surgical Excision Diagnosis	
		DCIS	Invasive
Liberman et al (21), 1998	1/10 (10)	1	0
Brem et al (8), 1999	4/16 (25)	2	2
Adrales et al (23), 2000	9/62 (15)	7	2
Philpotts et al (10), 2000	6/26 (23)	5	1
Jackman et al (25), 2002	22/104 (21)	19	3
Pandelidis et al (27), 2003	5/35 (14)	4	1
Winchester et al (28), 2003	11/65 (17)	6	5
Kettritz et al (29), 2004	32/135 (24)	NA	
<i>Ho et al. The Breast 2008</i>	14/61 (23)	14	0
Total	104/514 (20)	48	8

Underestimation of malignancy of atypical ductal hyperplasia diagnosed on 11-gauge stereotactically guided mammotome breast biopsy:

An Asian breast screen experience

- 70 of 741 (9.4%) of core biopsies performed between Jan 2002 to Dec 2004 revealed ADH.
- 61 calcific lesions with biopsy diagnosed ADH were correlated with surgical excision findings:
 - DCIS in 14 (23%) cases.
 - No association between morphology, extent of calcifications, number of cores sampled with underestimation of malignancy ($P = 0.503, 0.709, 0.551$ respectively).
 - In the absence of residual calcifications, the frequency of underestimation of carcinoma still occurred in 17%.

Ho et al. The Breast 2008; 17: 401-6.

Learning points

- Diagnosis of ADH and FEA on core biopsies.
- Variability in appearances of levels at different depths – need to examine multiple levels.