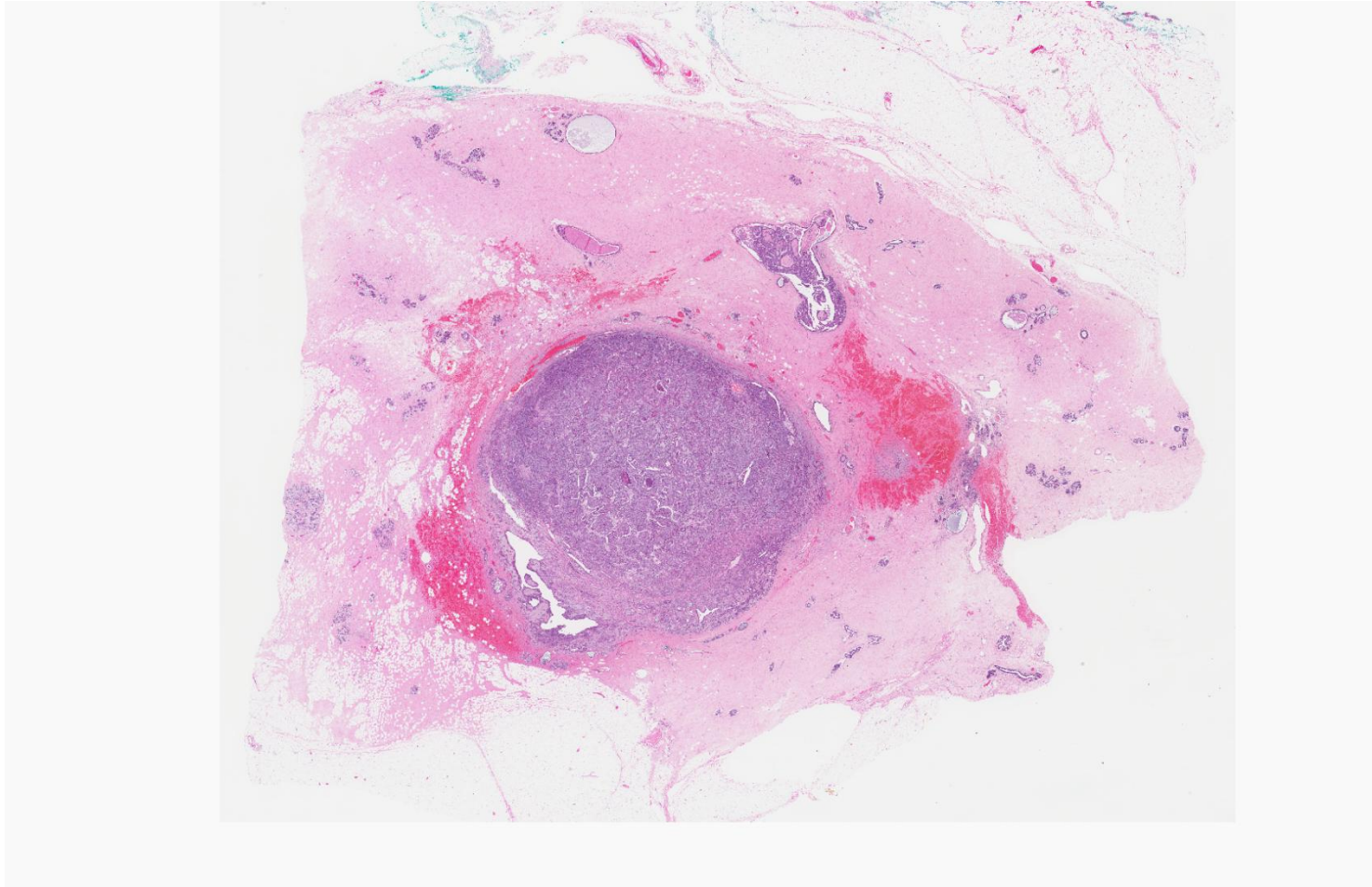
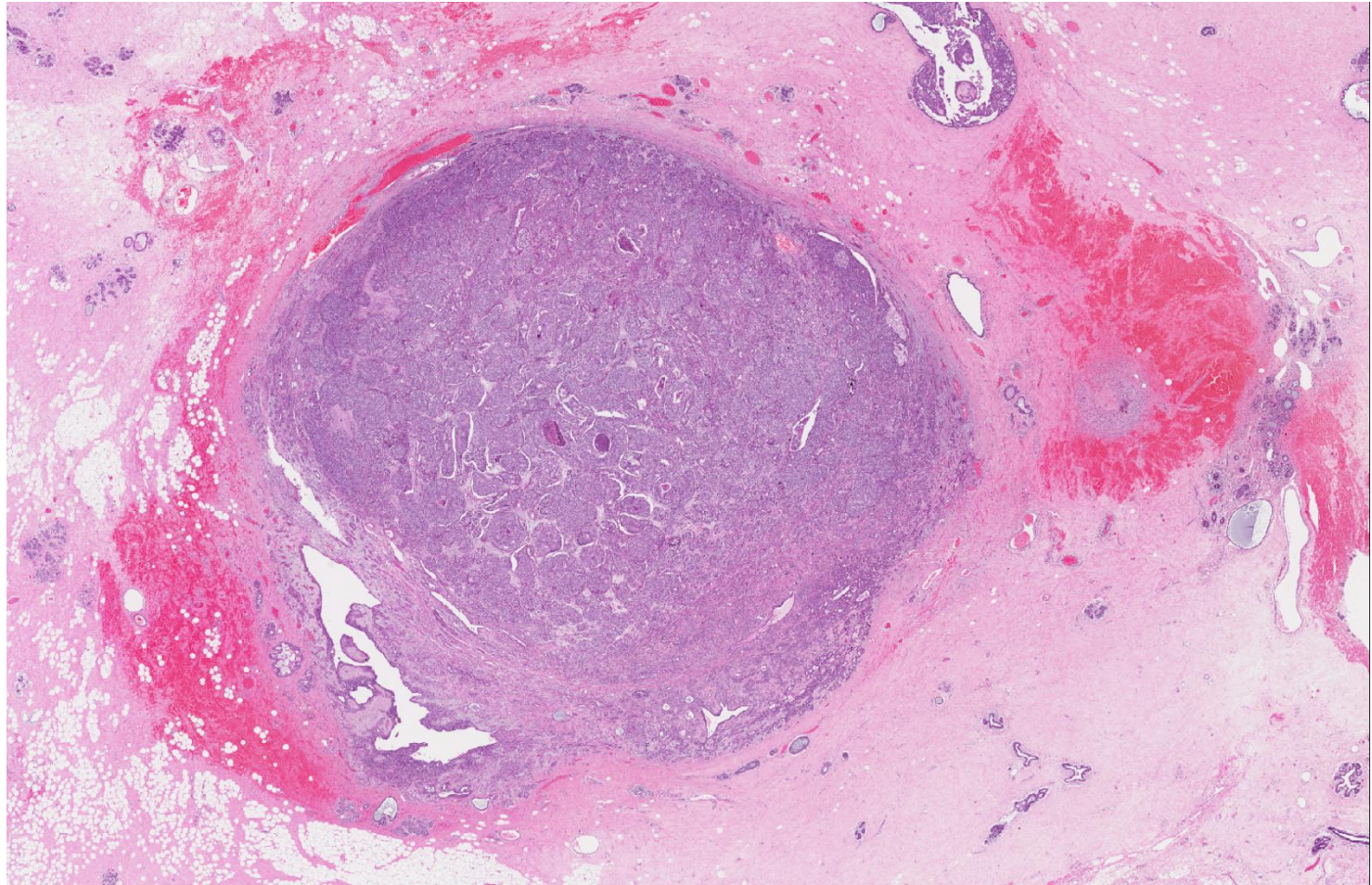
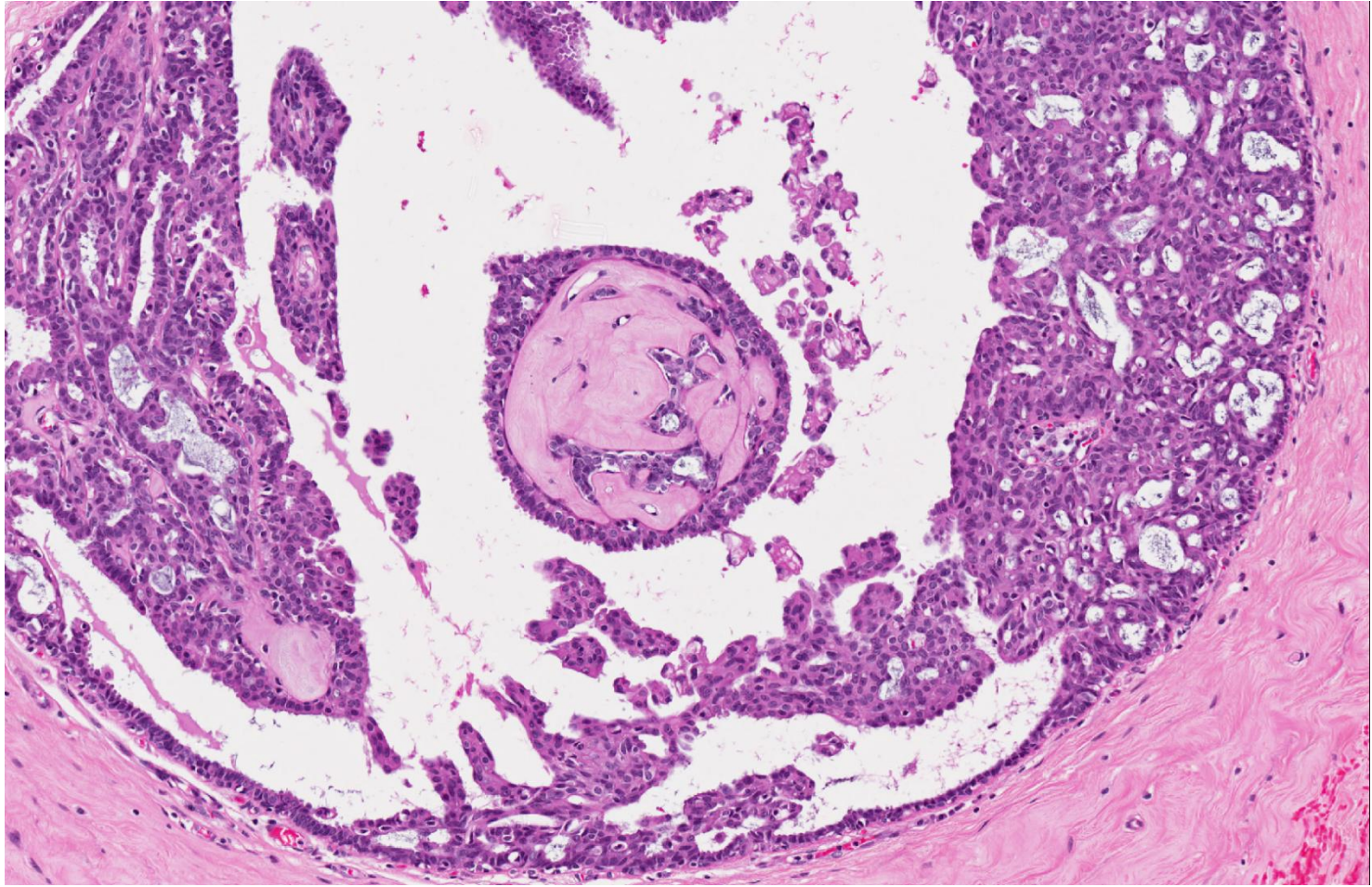
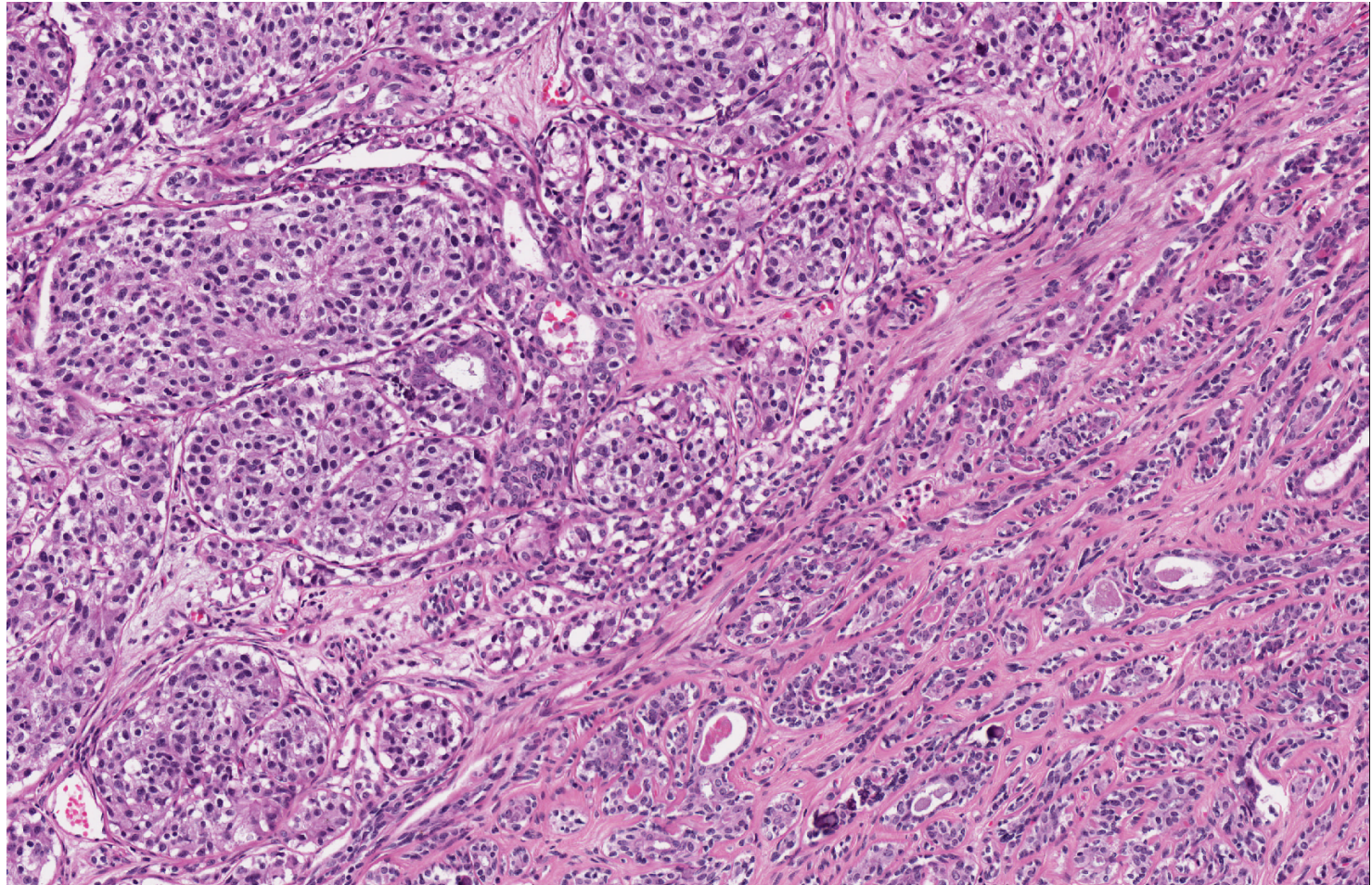


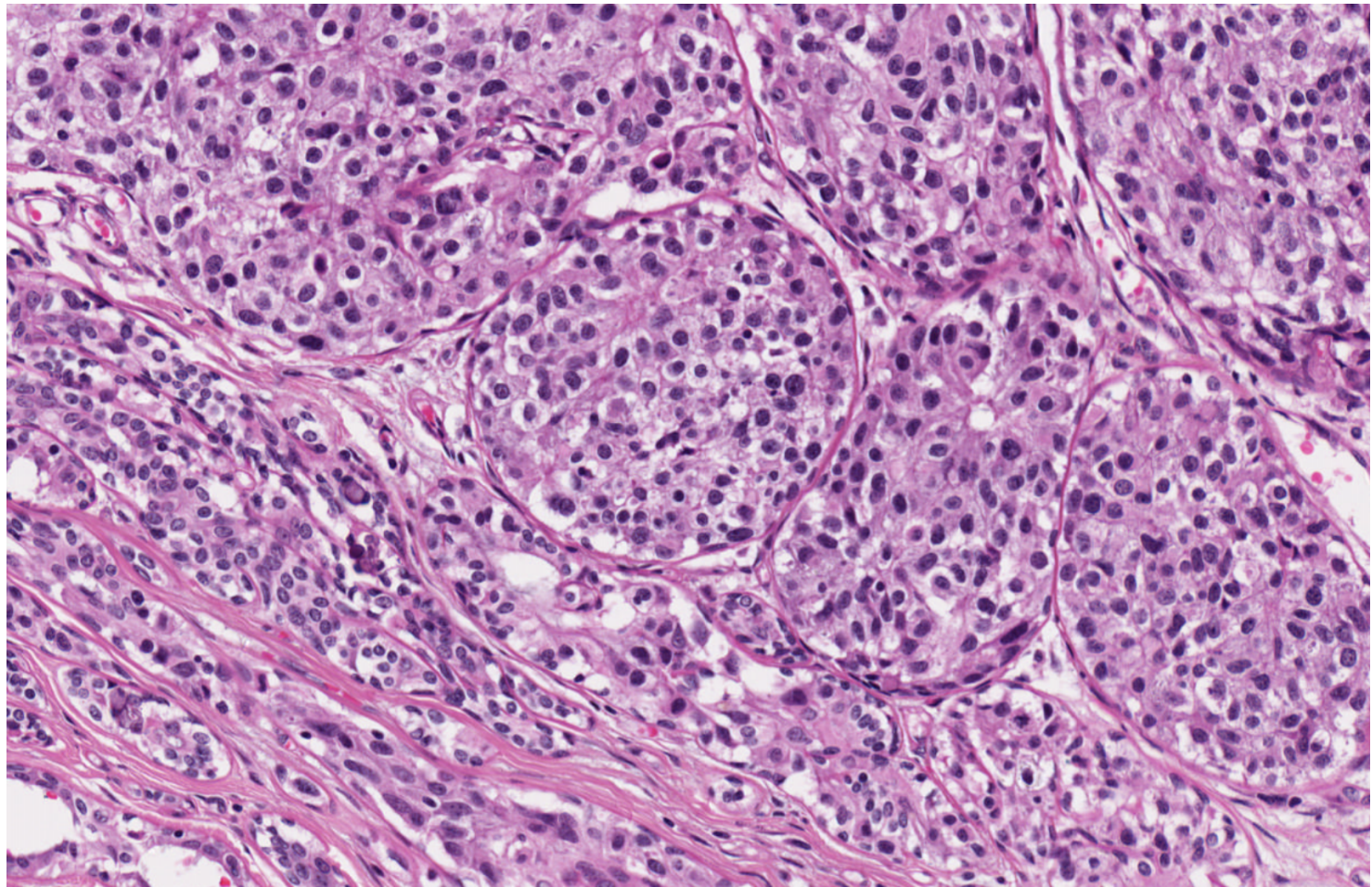
- Set B.7
- 45 year old Chinese woman with a left breast nodular lesion.

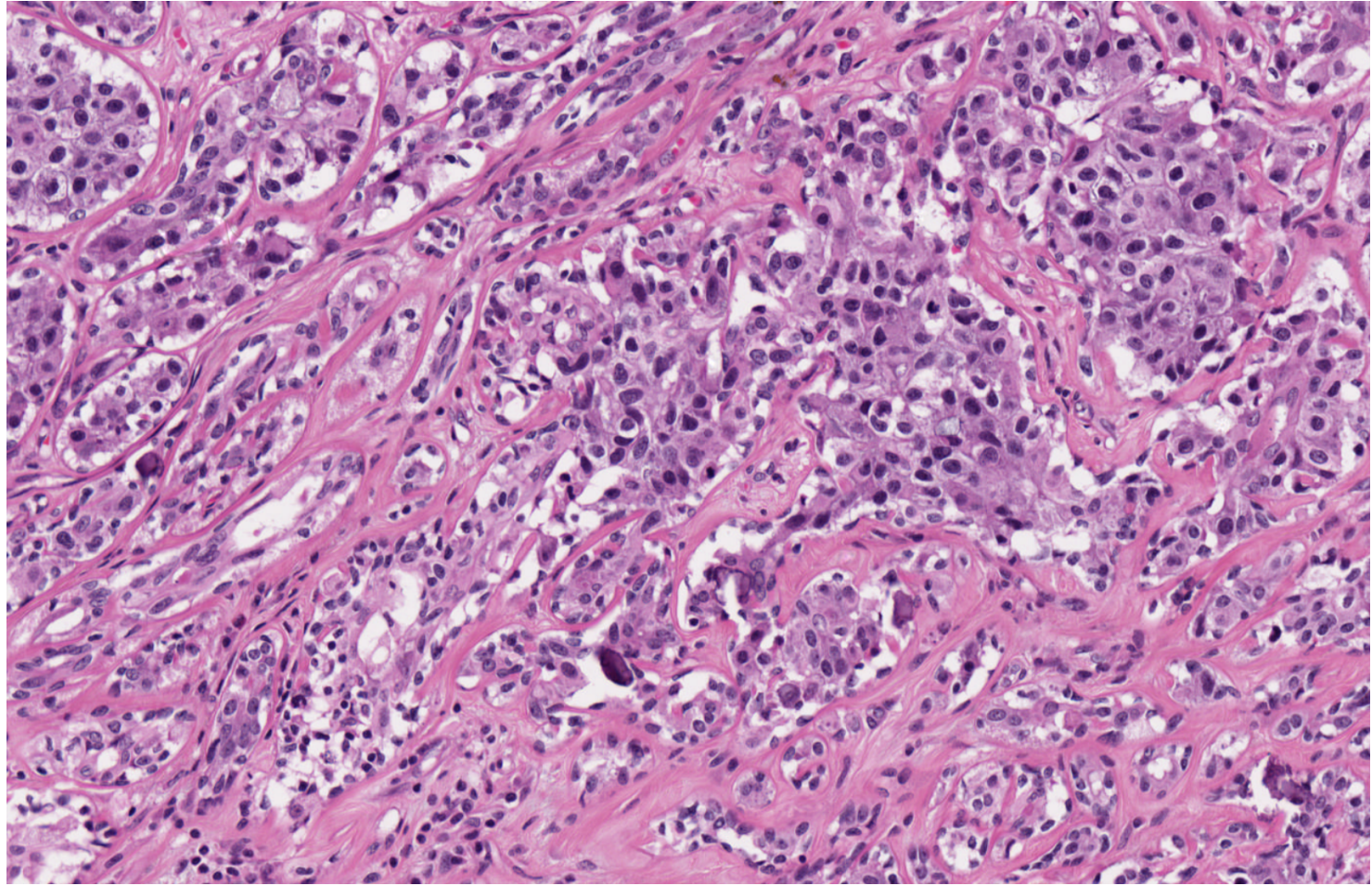


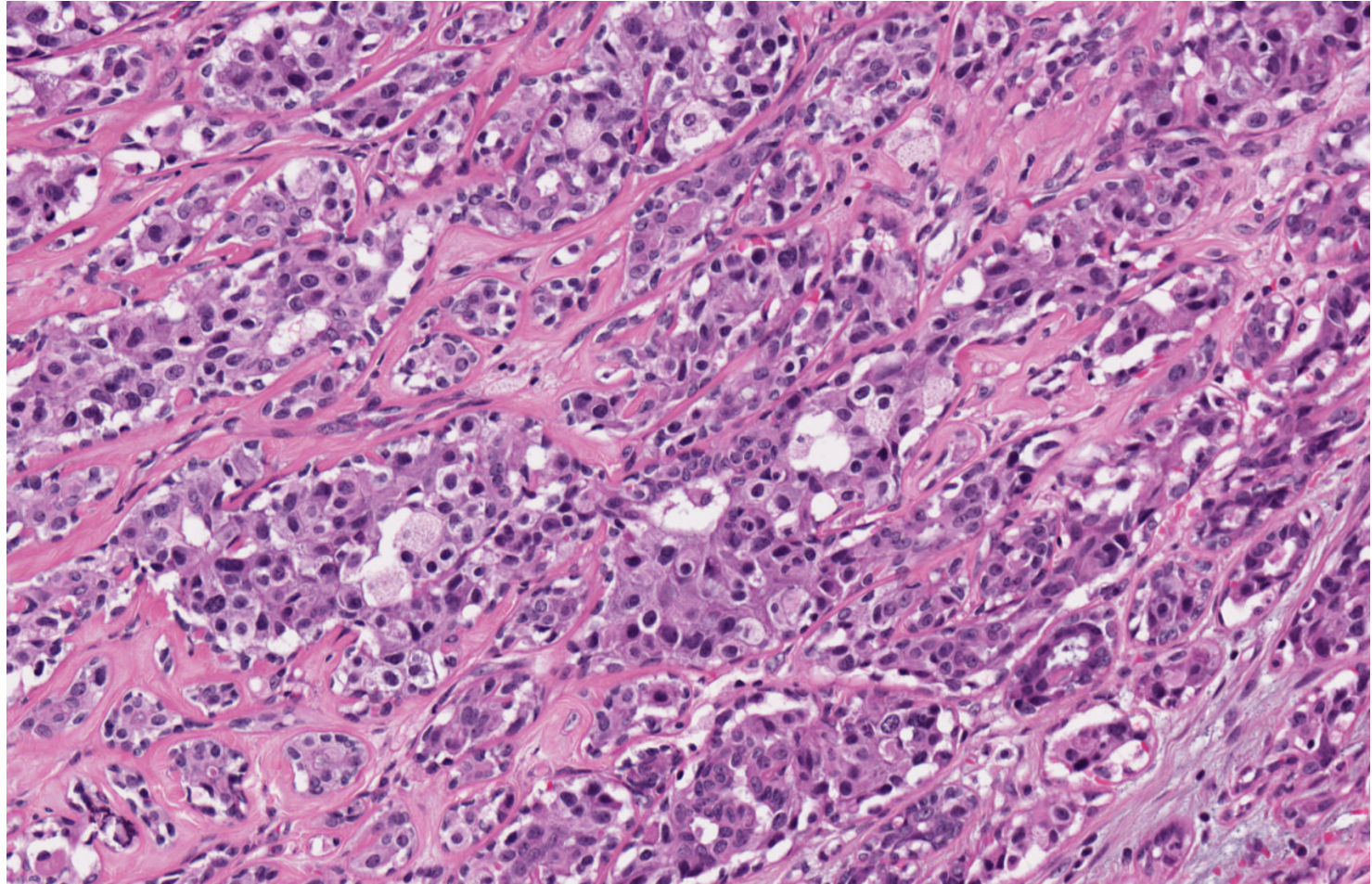


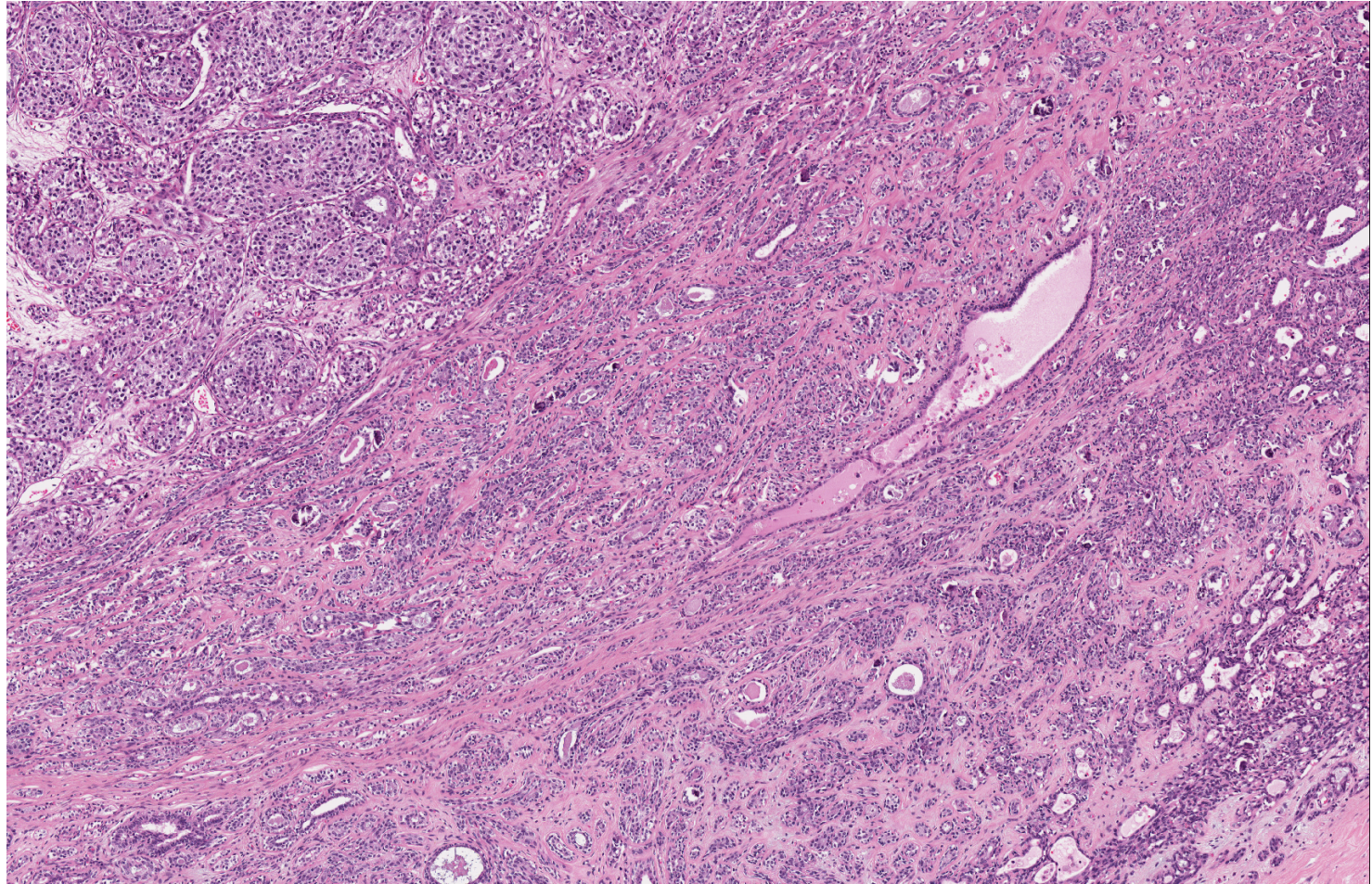


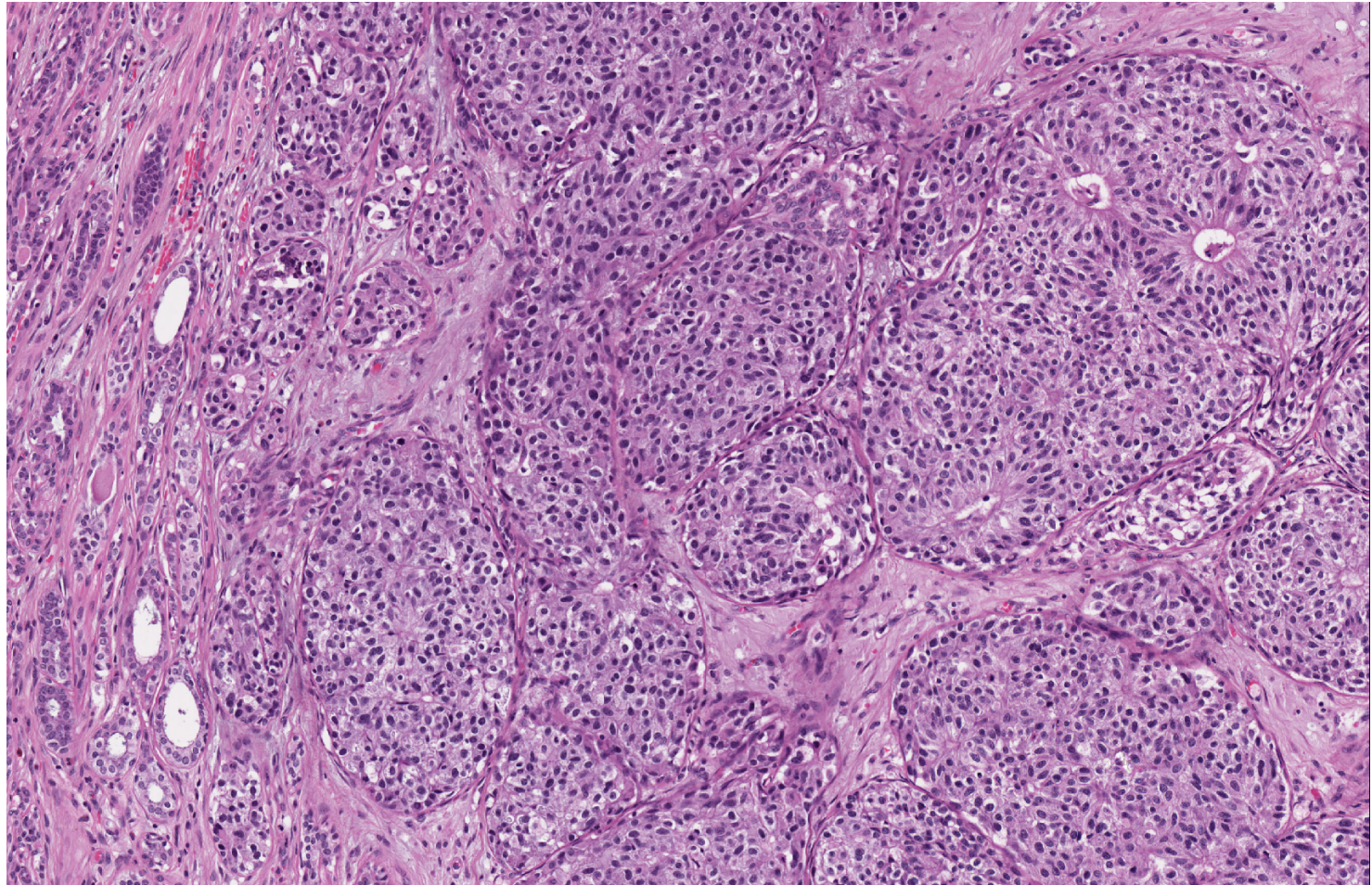


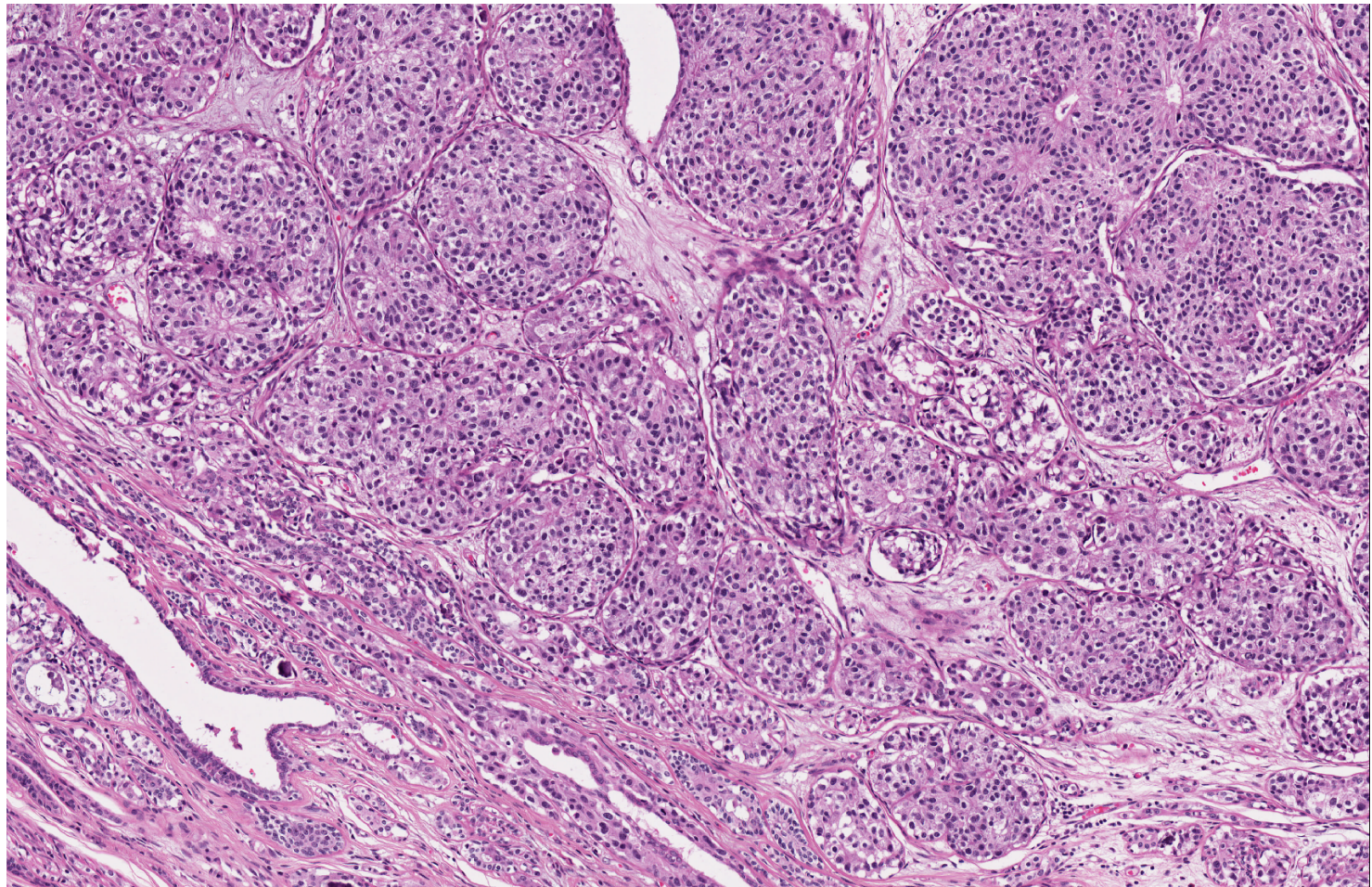


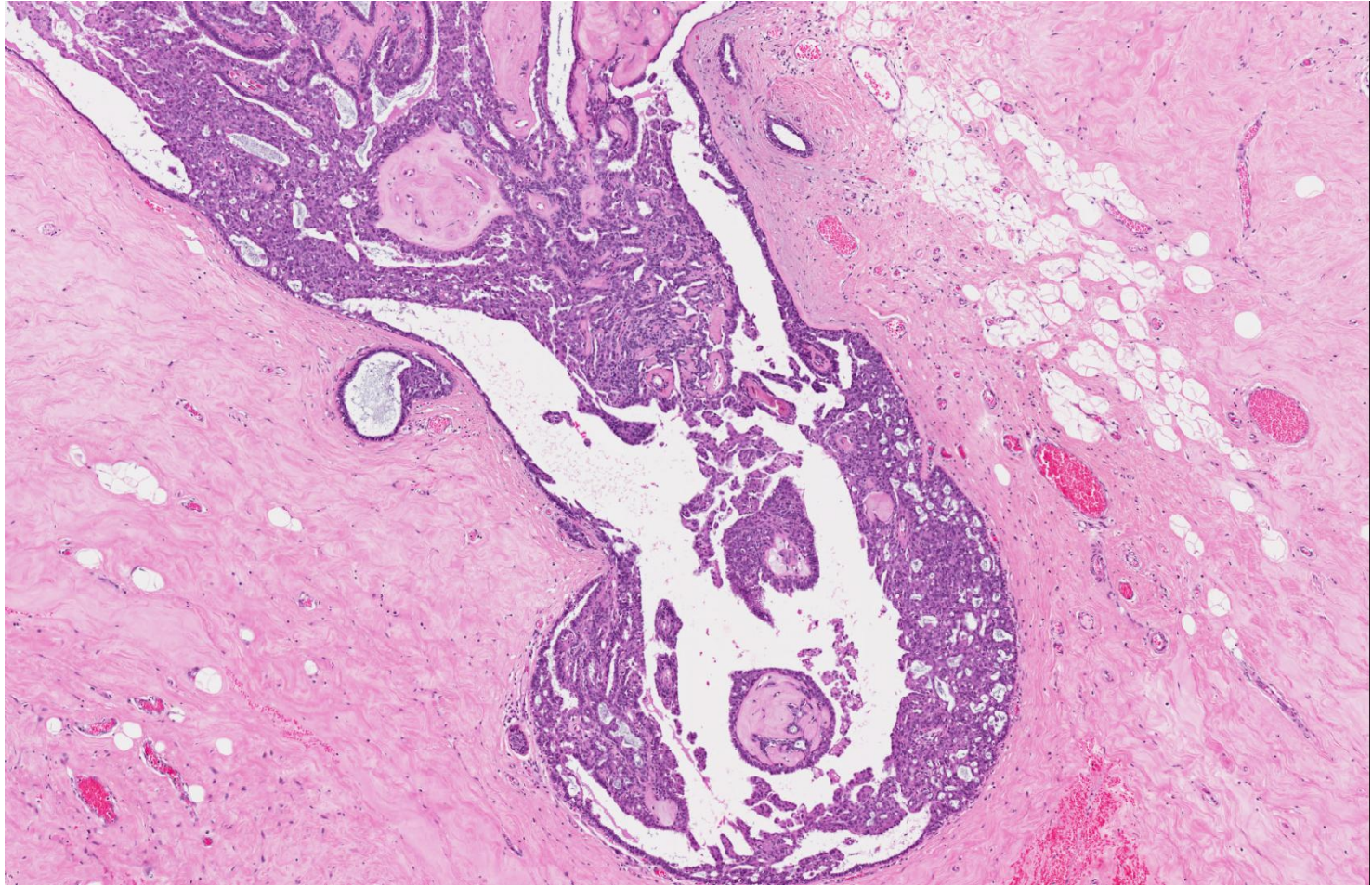


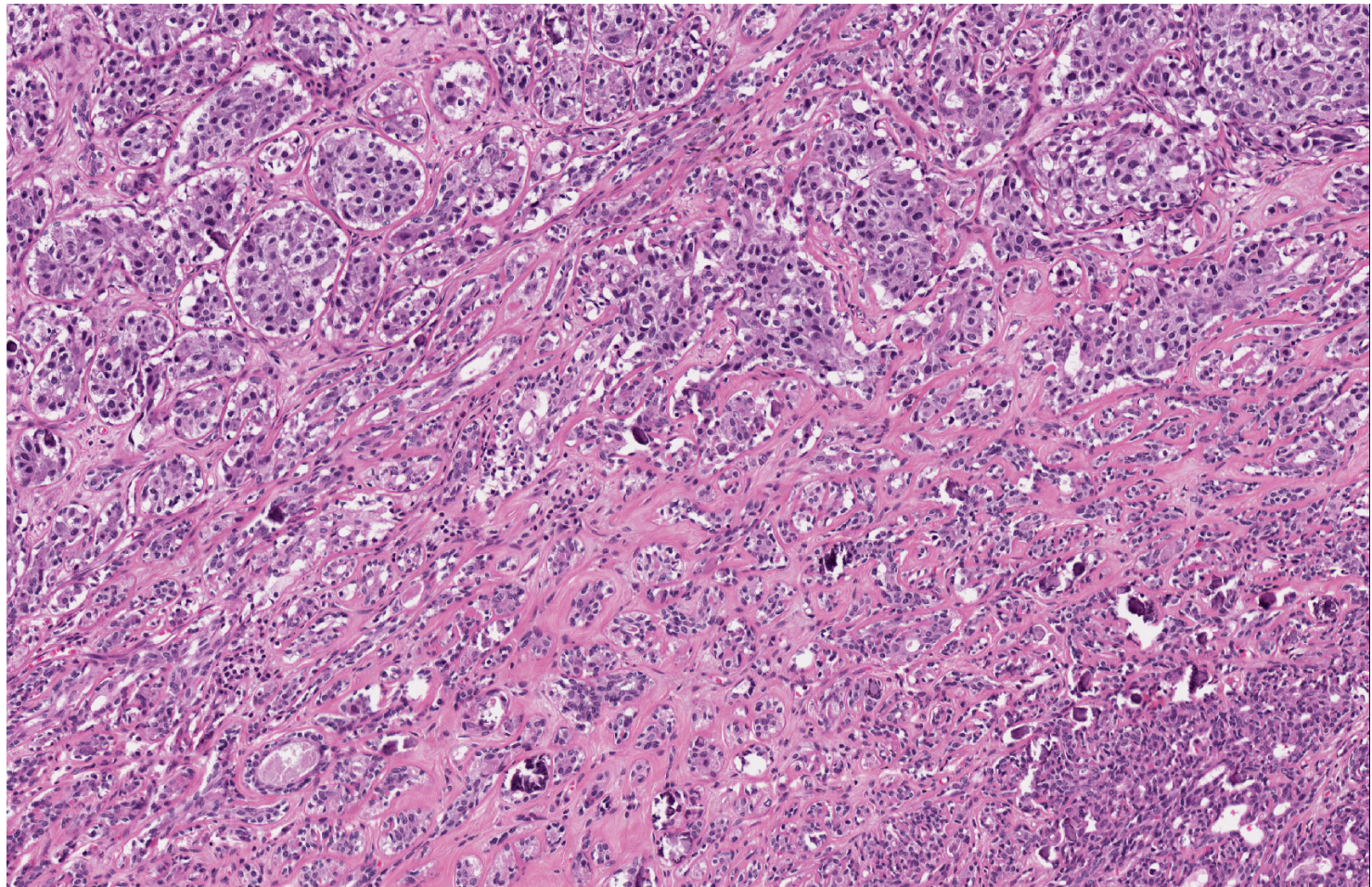


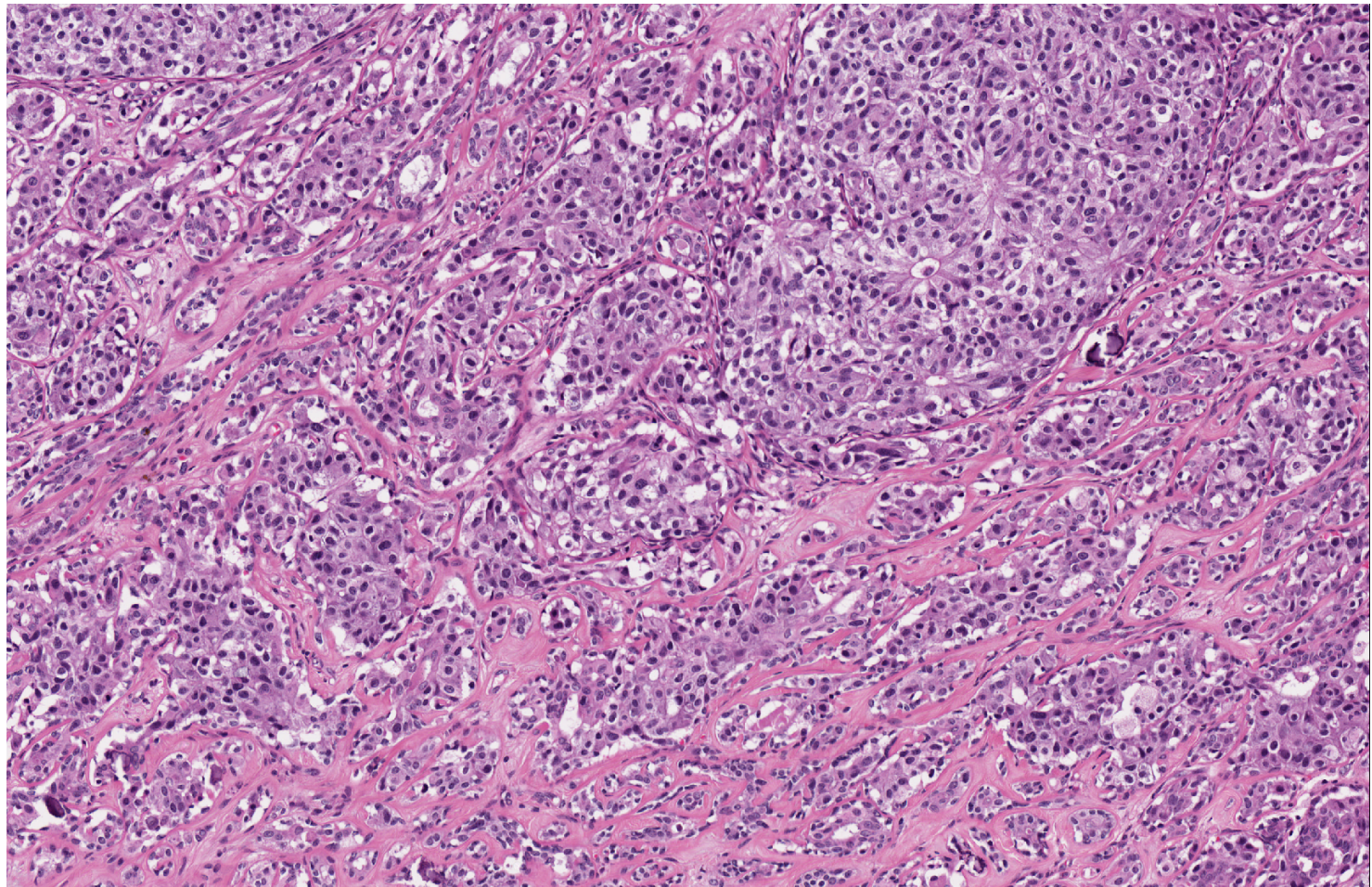




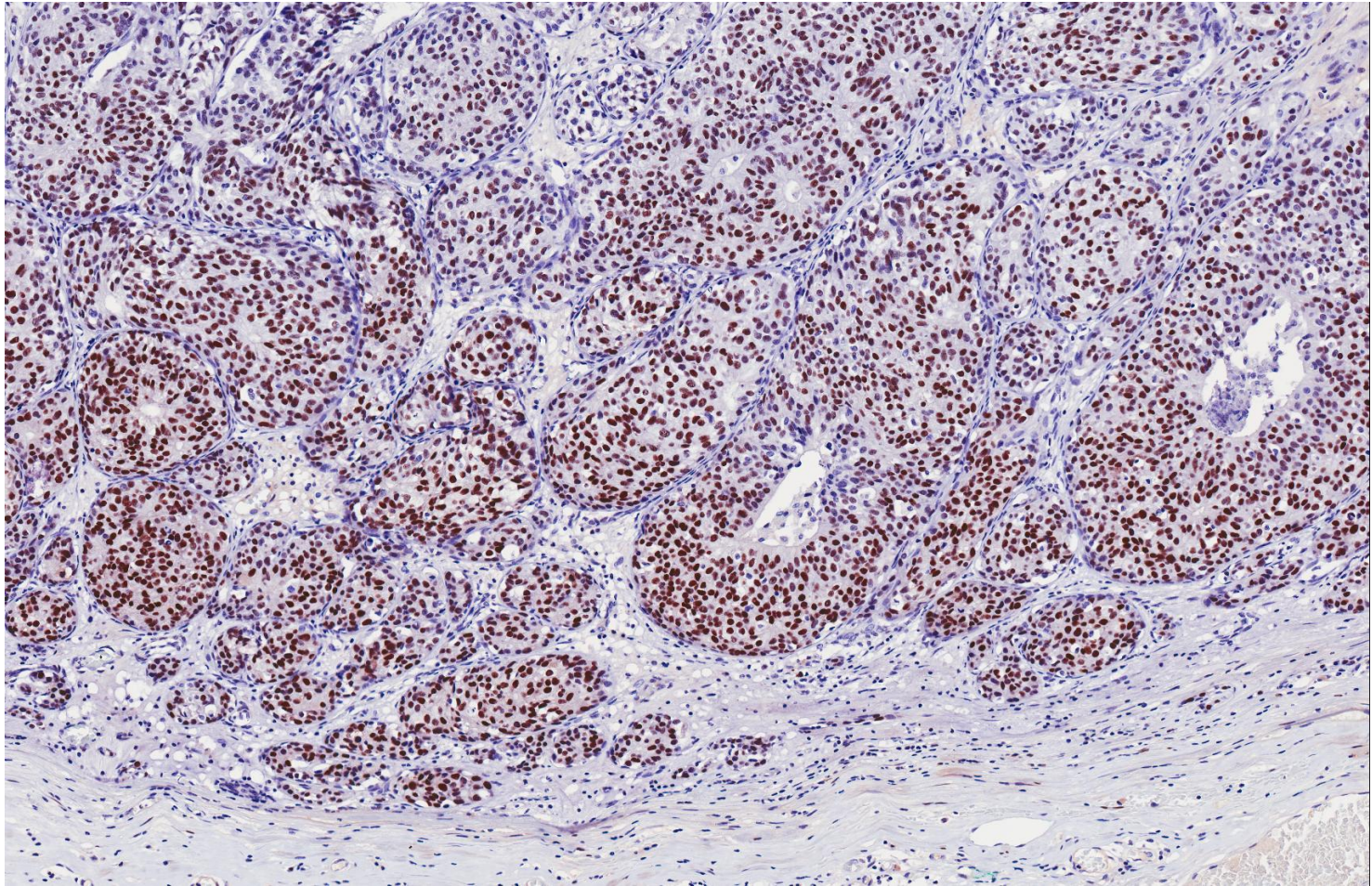




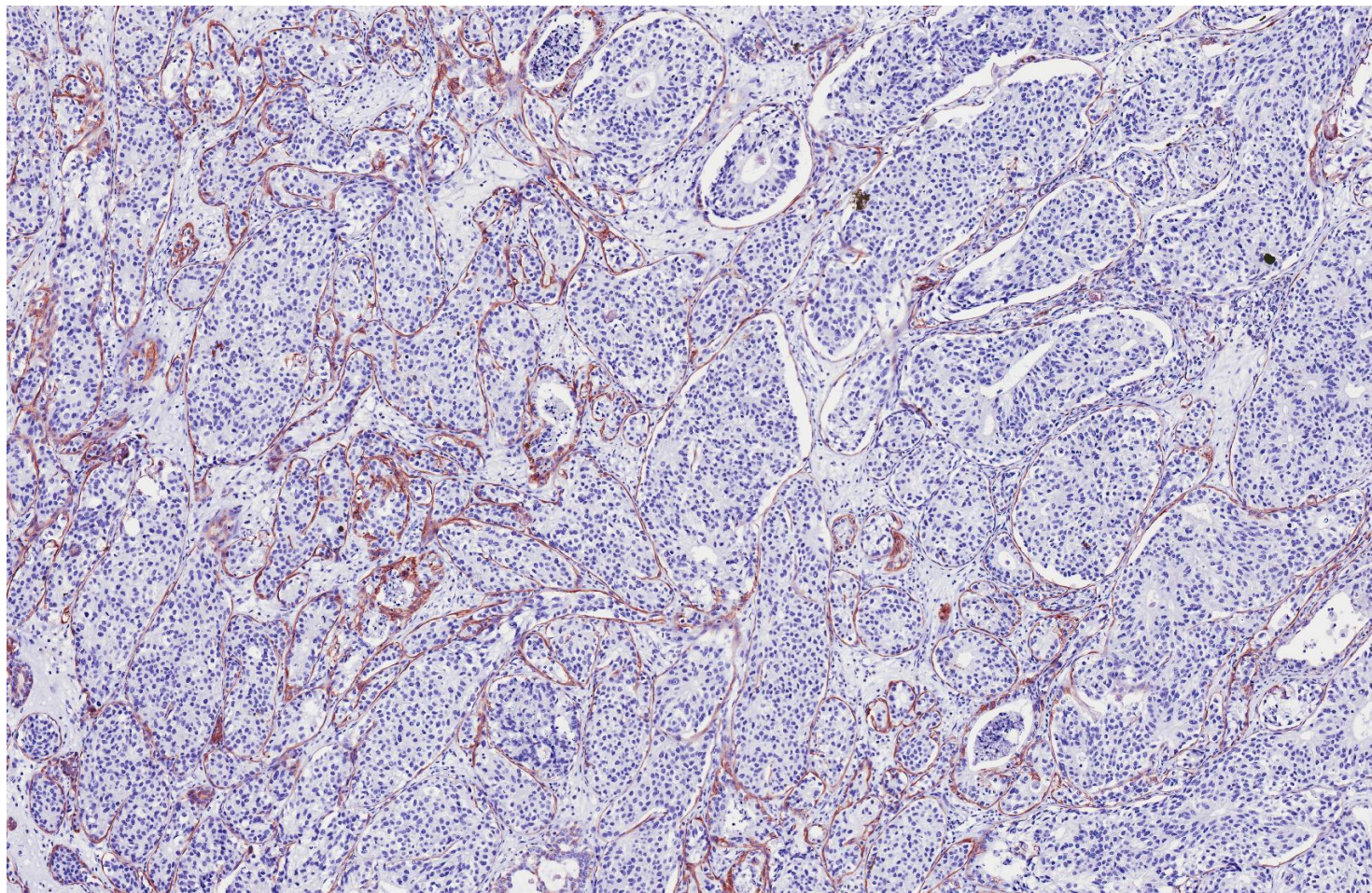




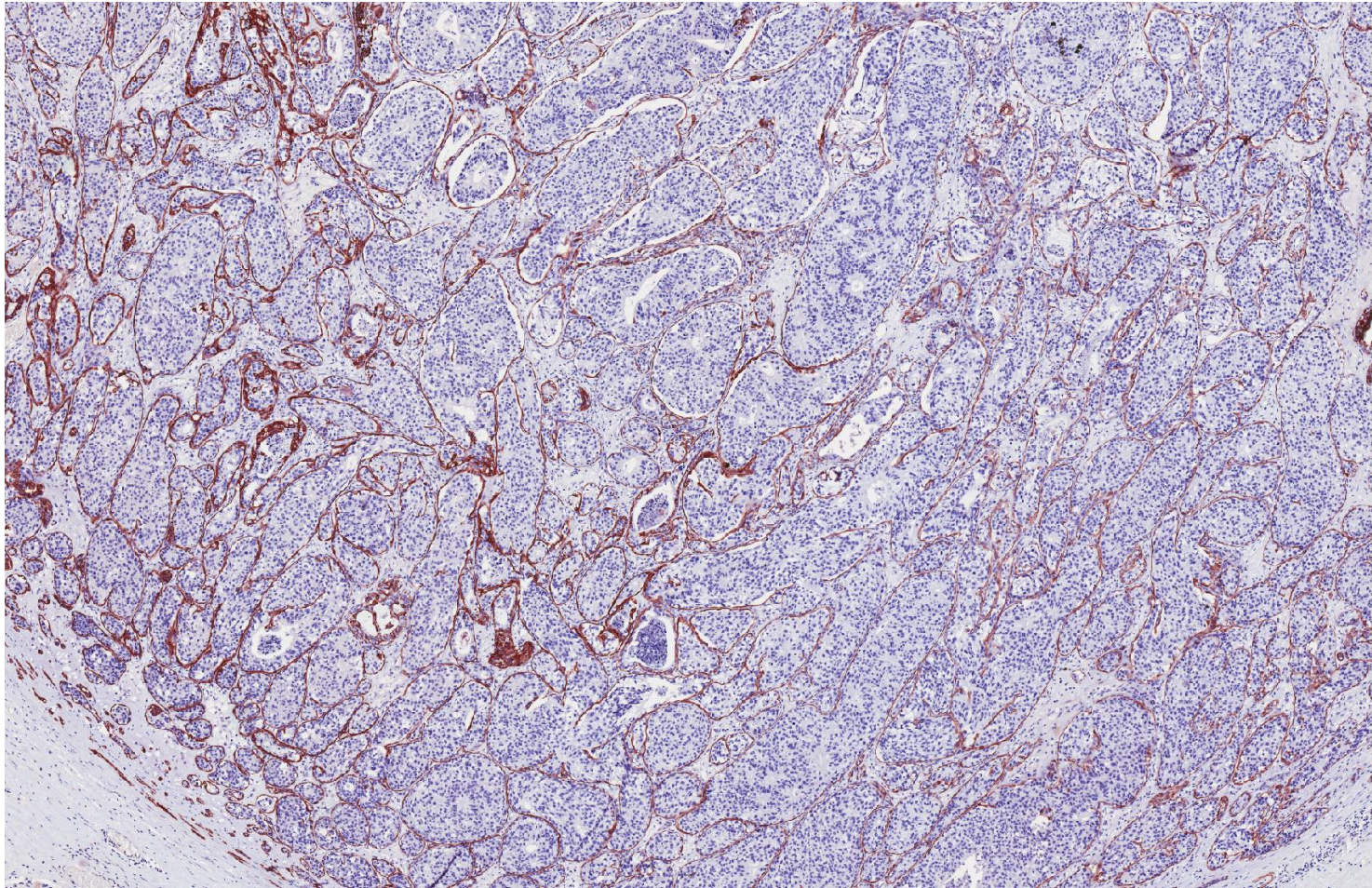
ER



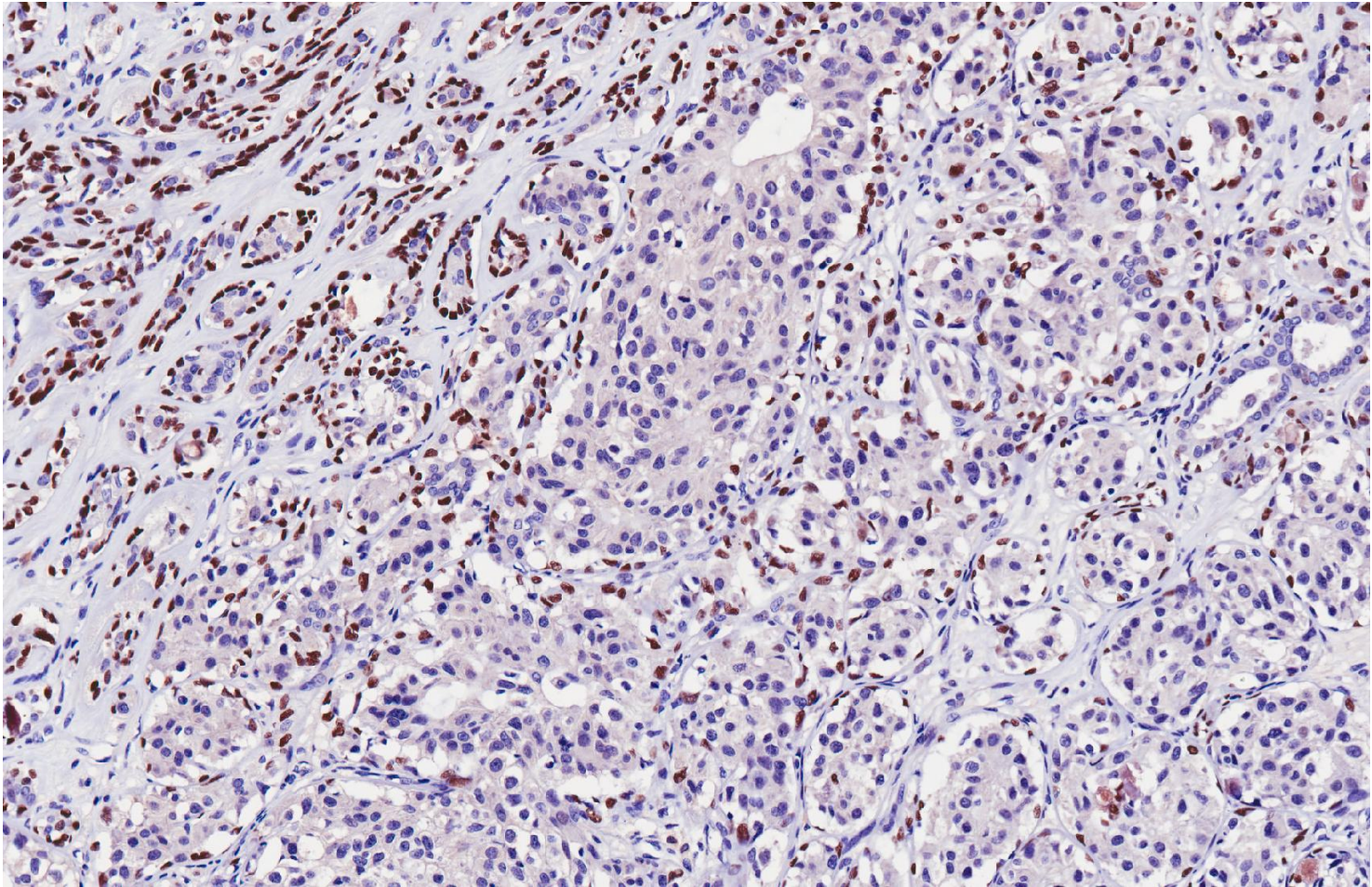
CK5/6



CK14



p63



- DCIS, intermediate nuclear grade, with necrosis, superimposed on a sclerosed/solidified intraductal papilloma.

Learning points

- Diagnosis of DCIS within sclerosed/solidified intraductal papilloma.
- Use of immunohistochemistry for confirmation of non-invasion.
- Biological behaviour of DCIS fully confined within a nodular lesion, versus one where DCIS is seen in the surrounding breast tissue.