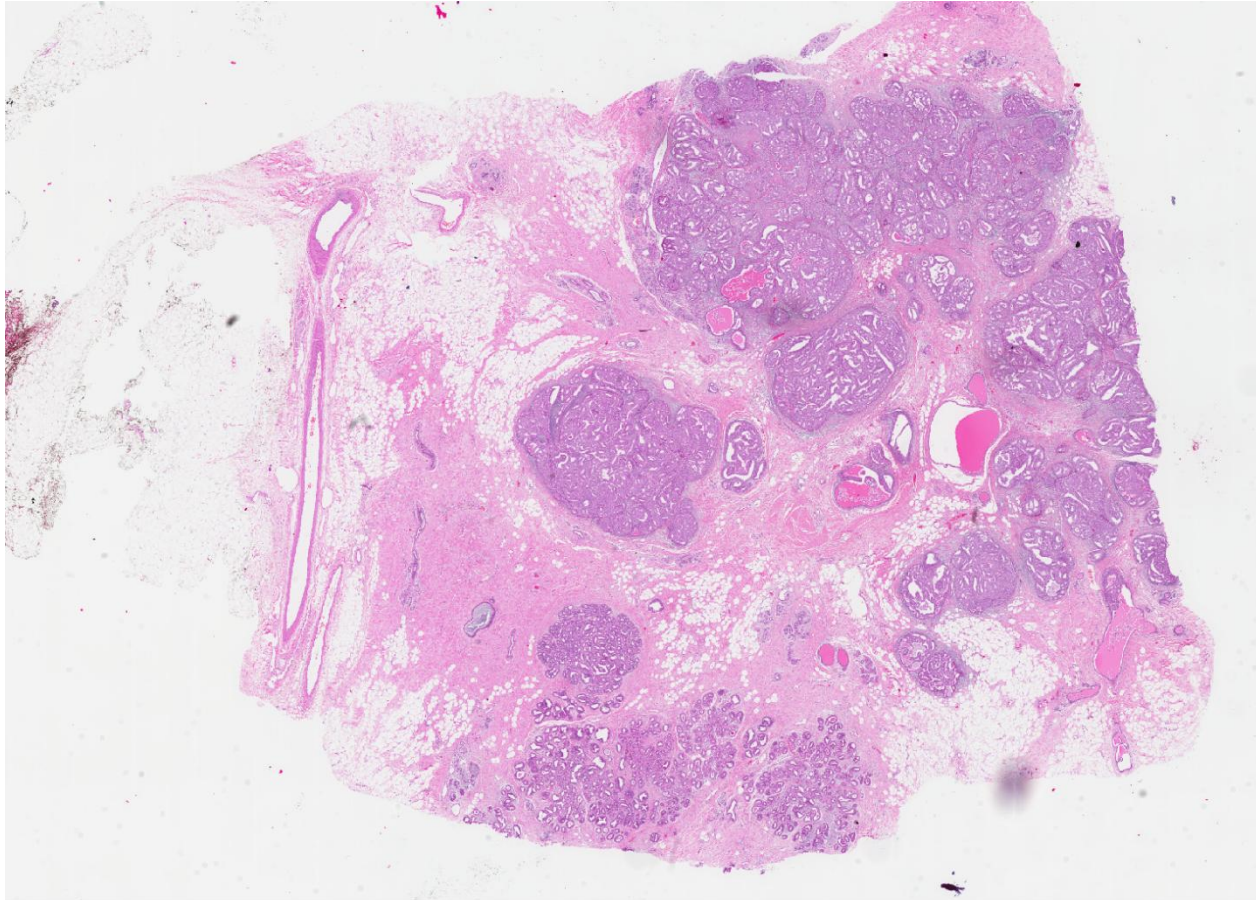
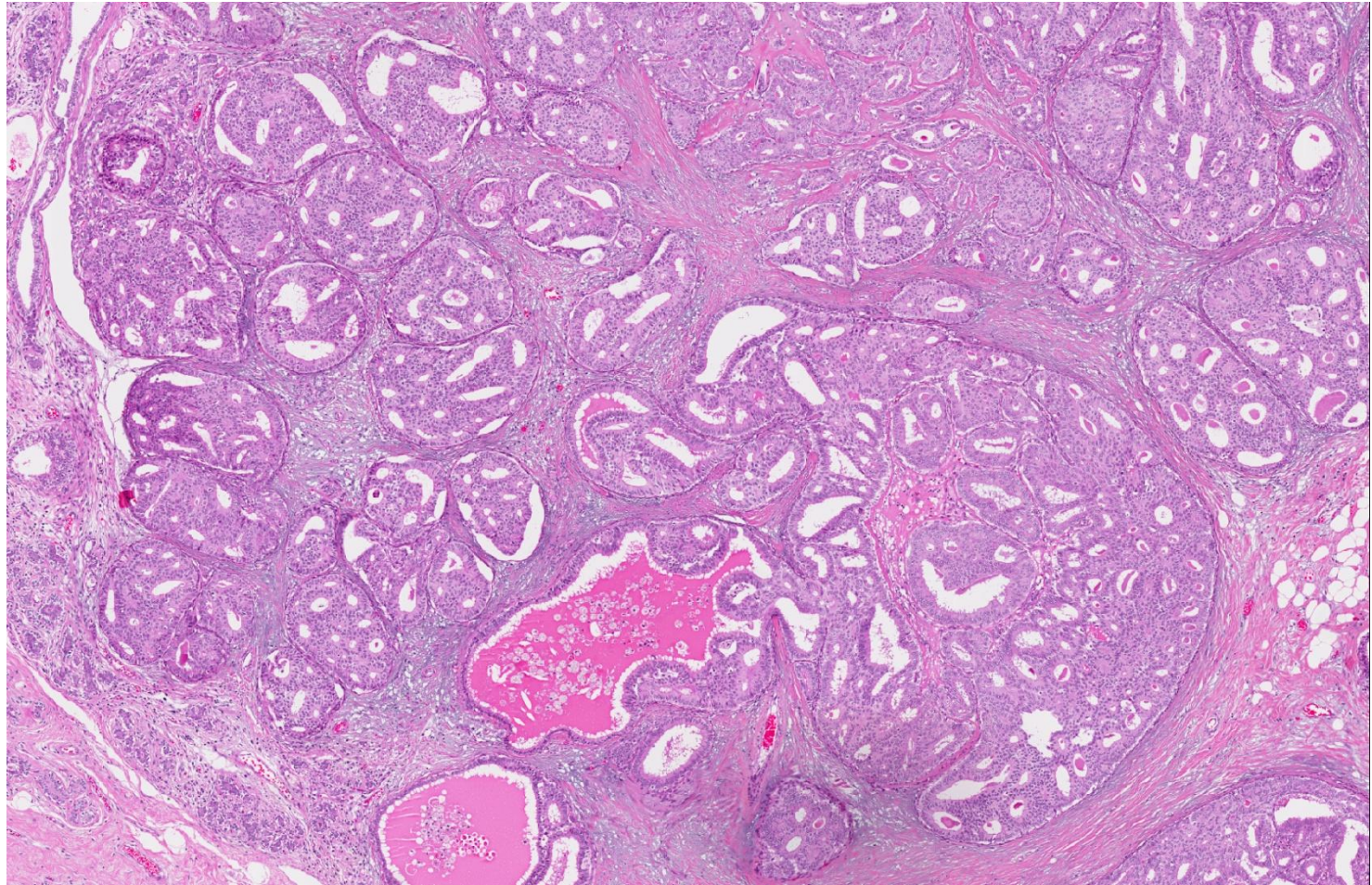


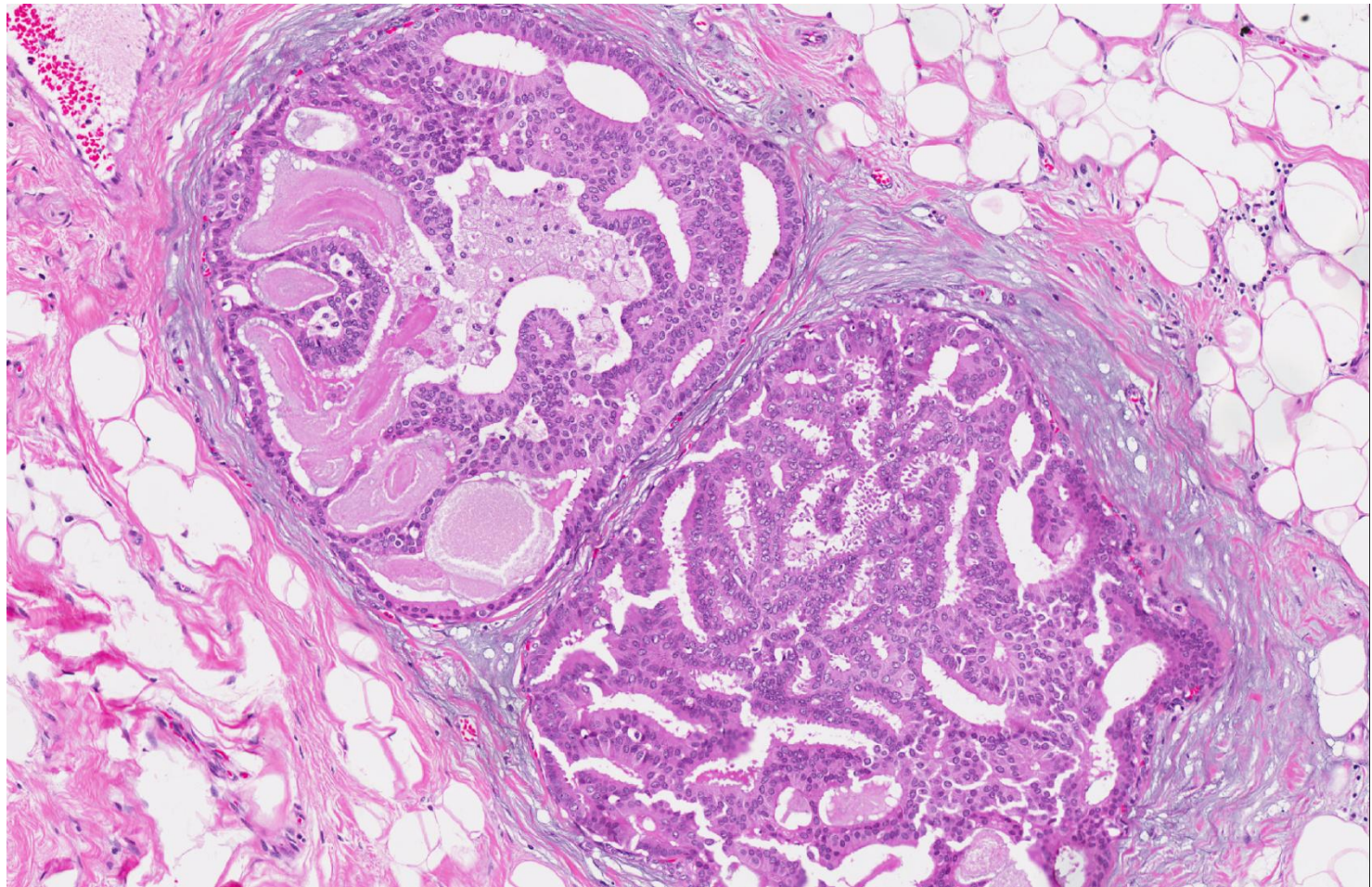
- S2010-5094
- 50yr old woman with recurrent lumps in the left breast for 2 years.



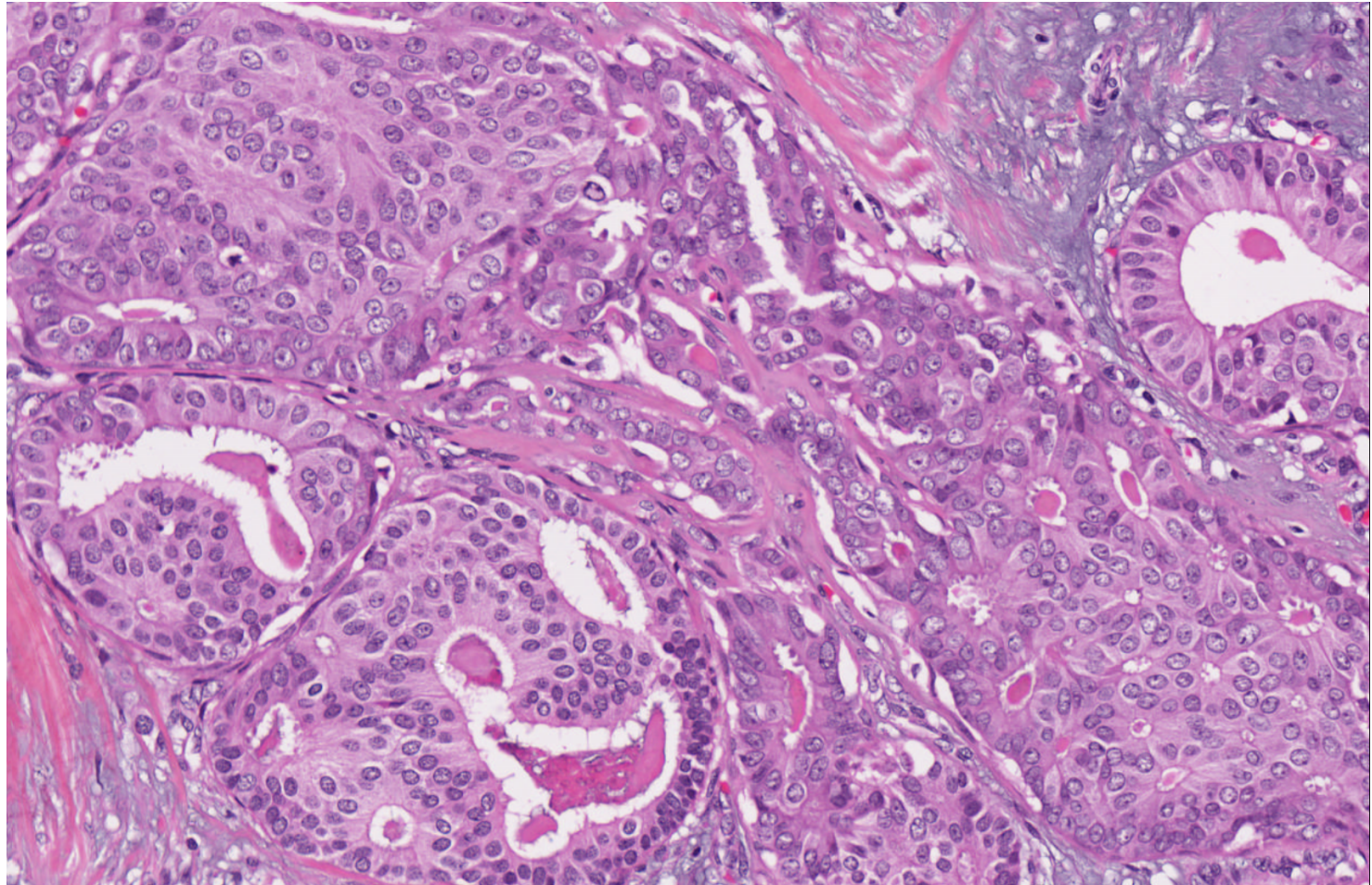




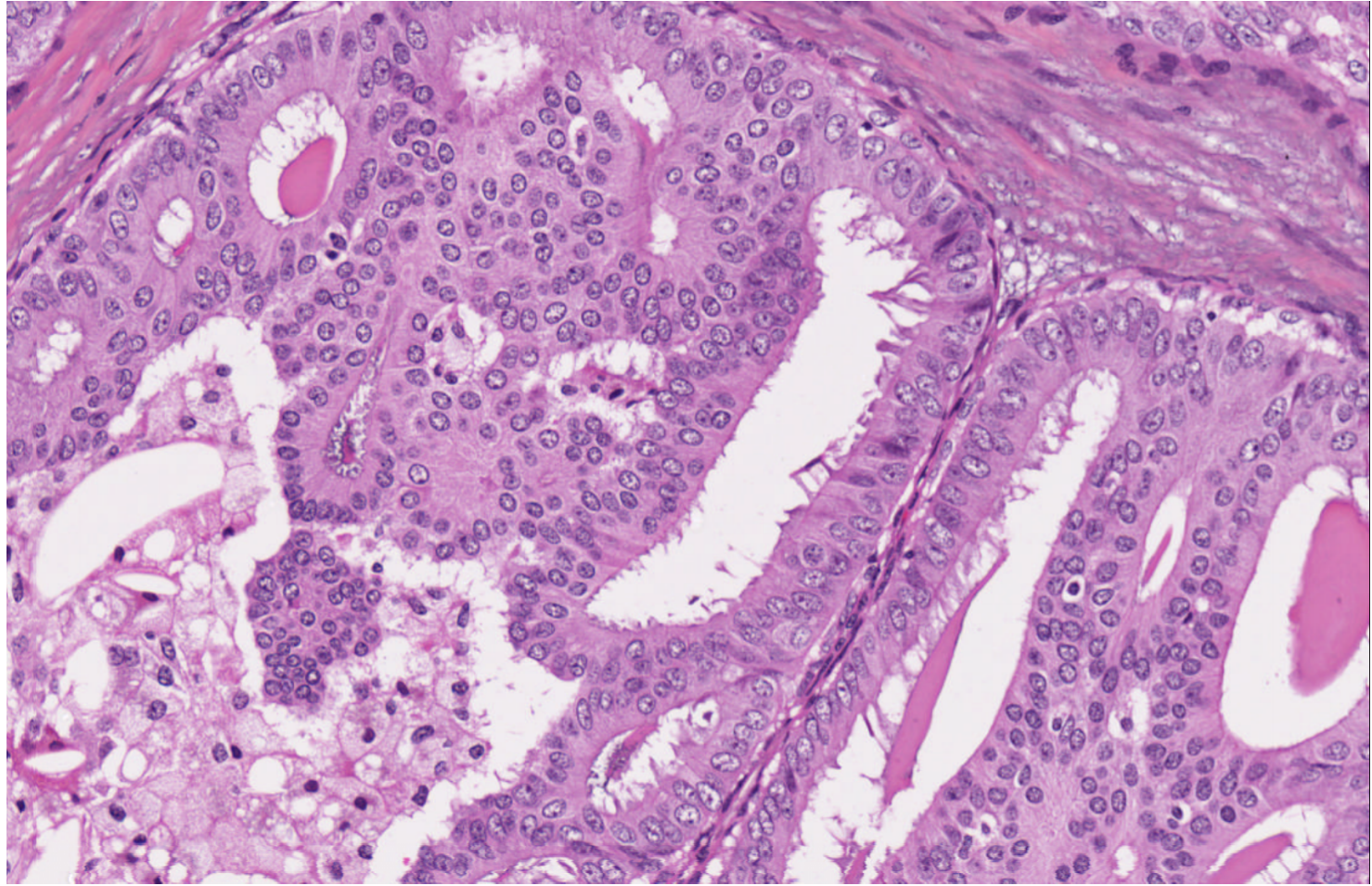




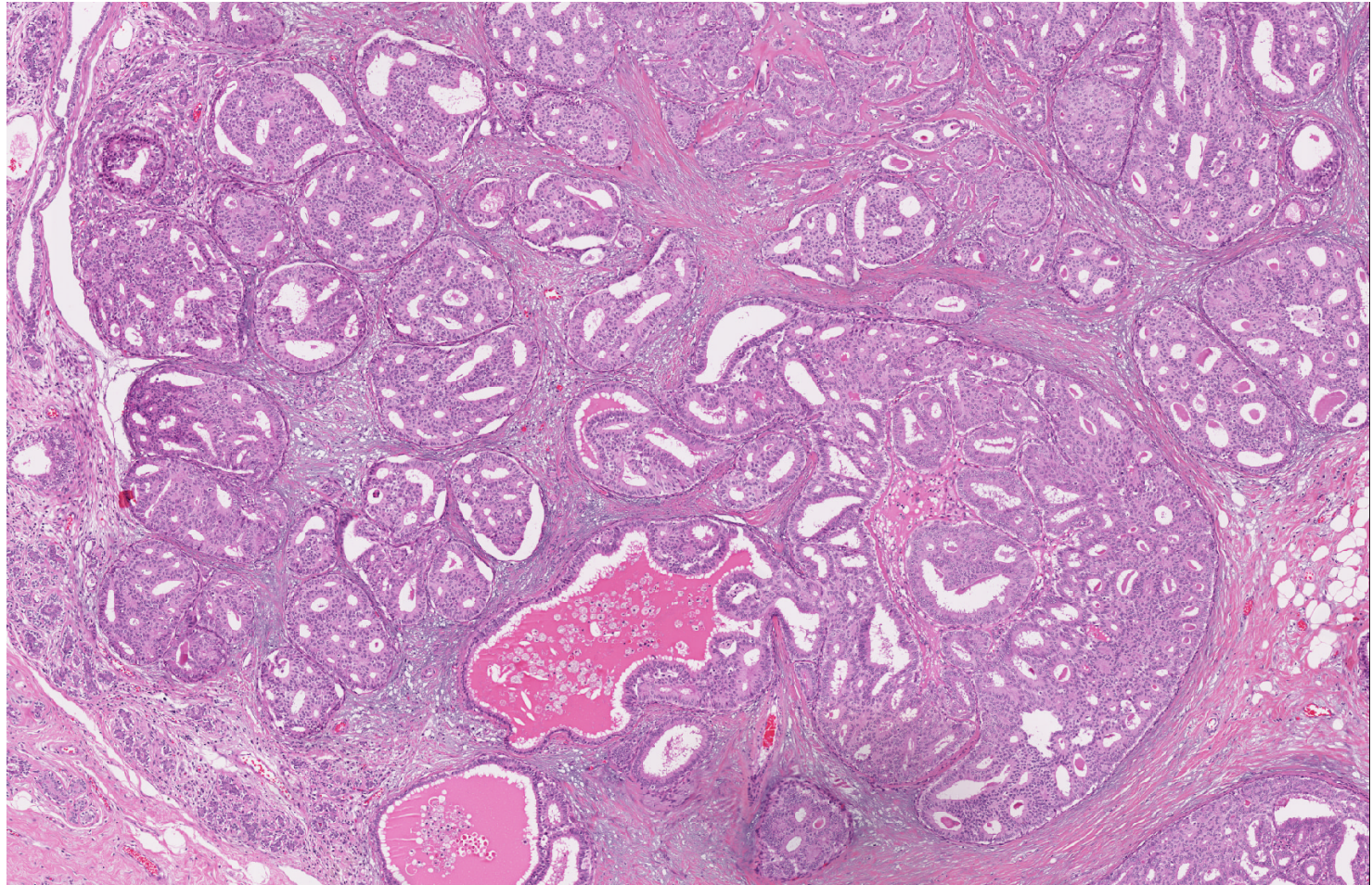




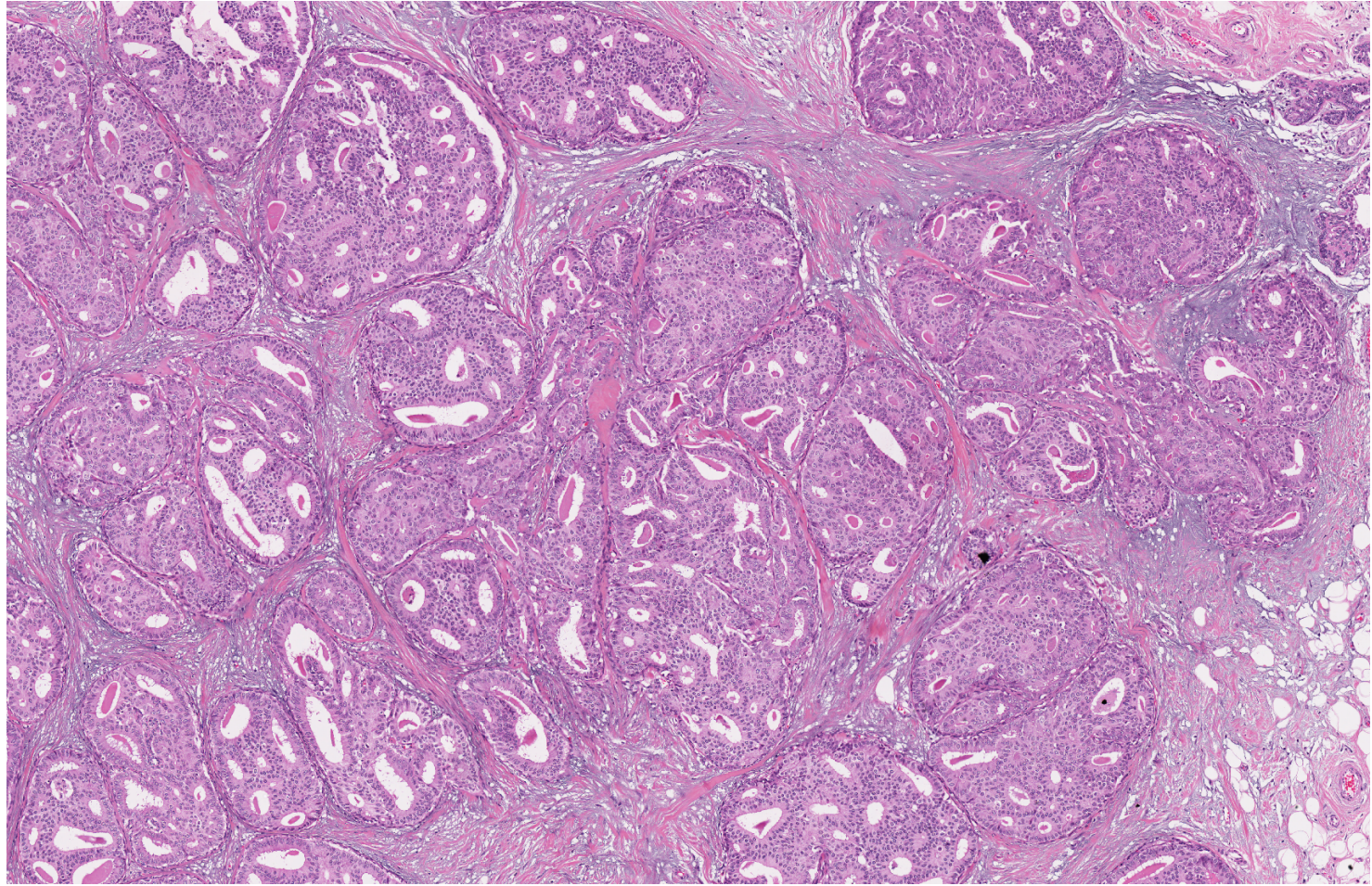




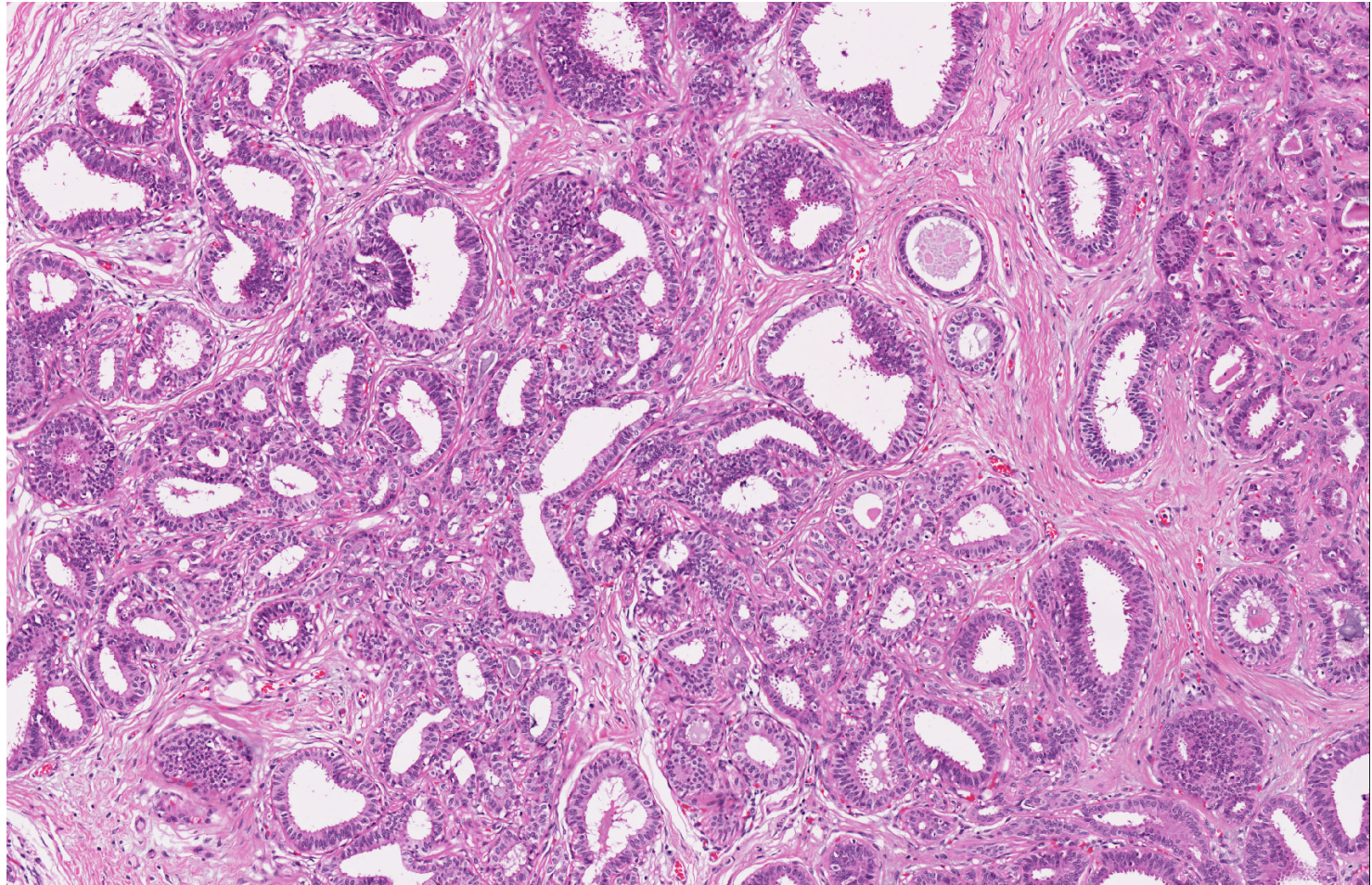




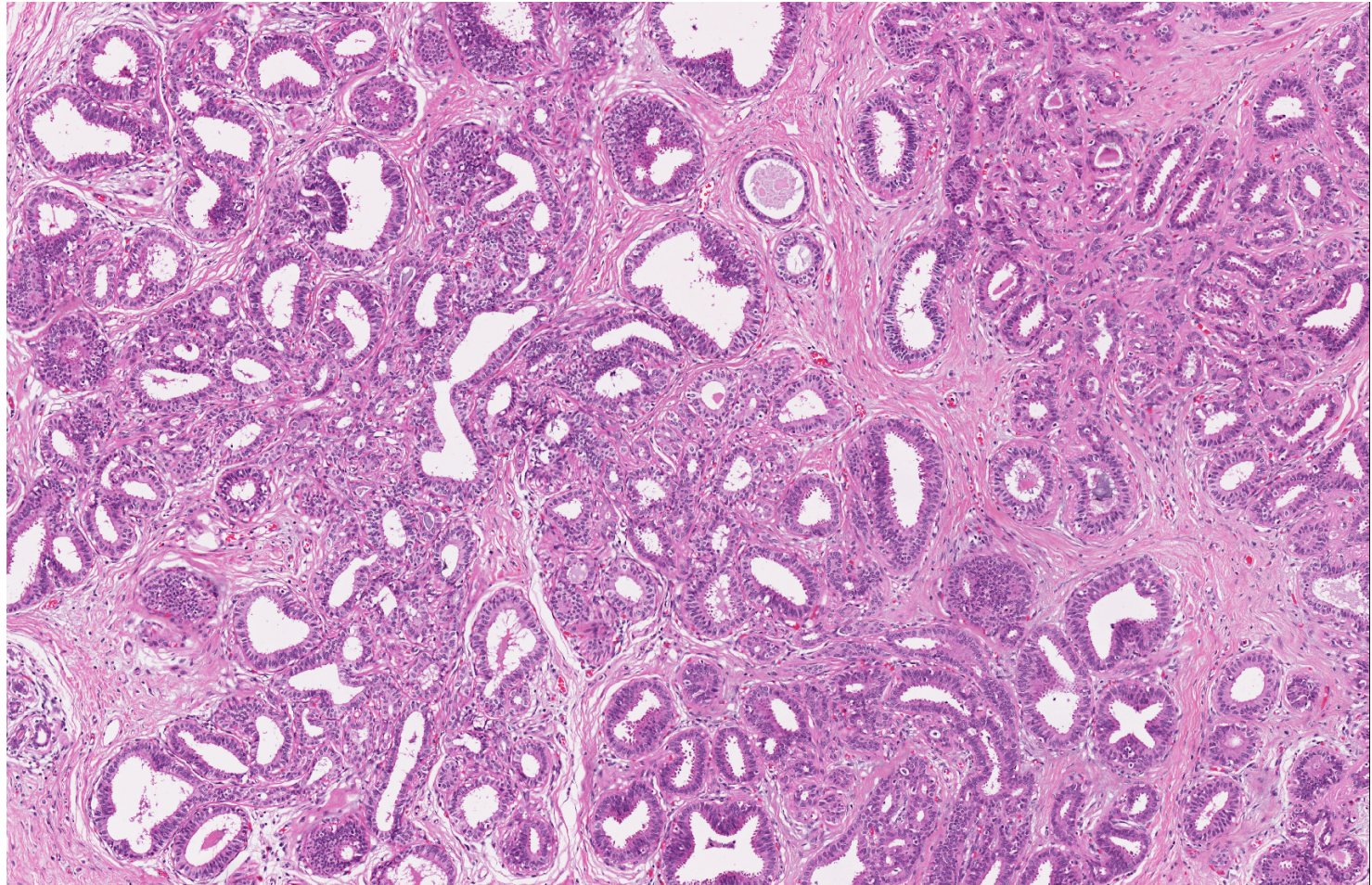




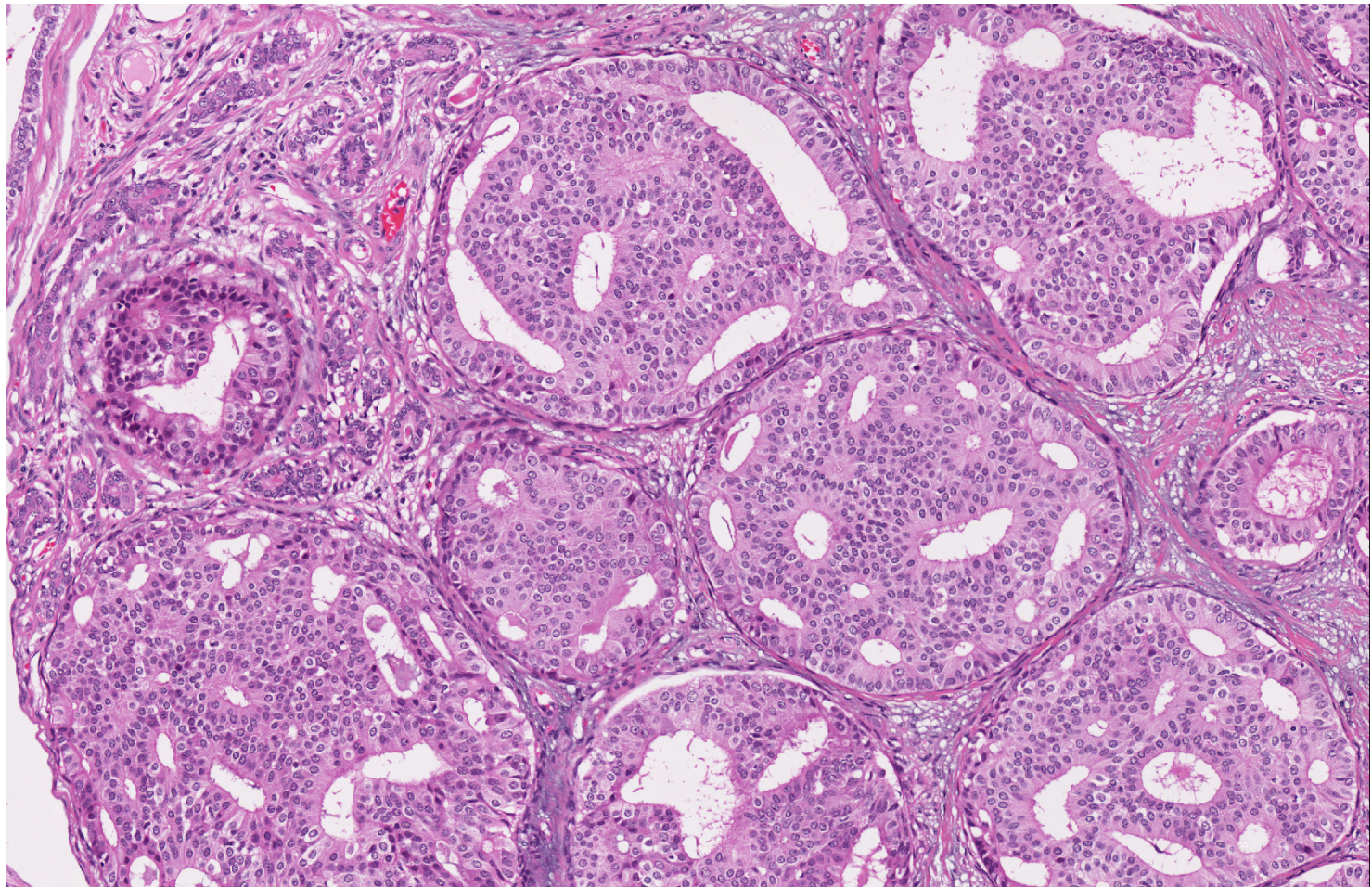




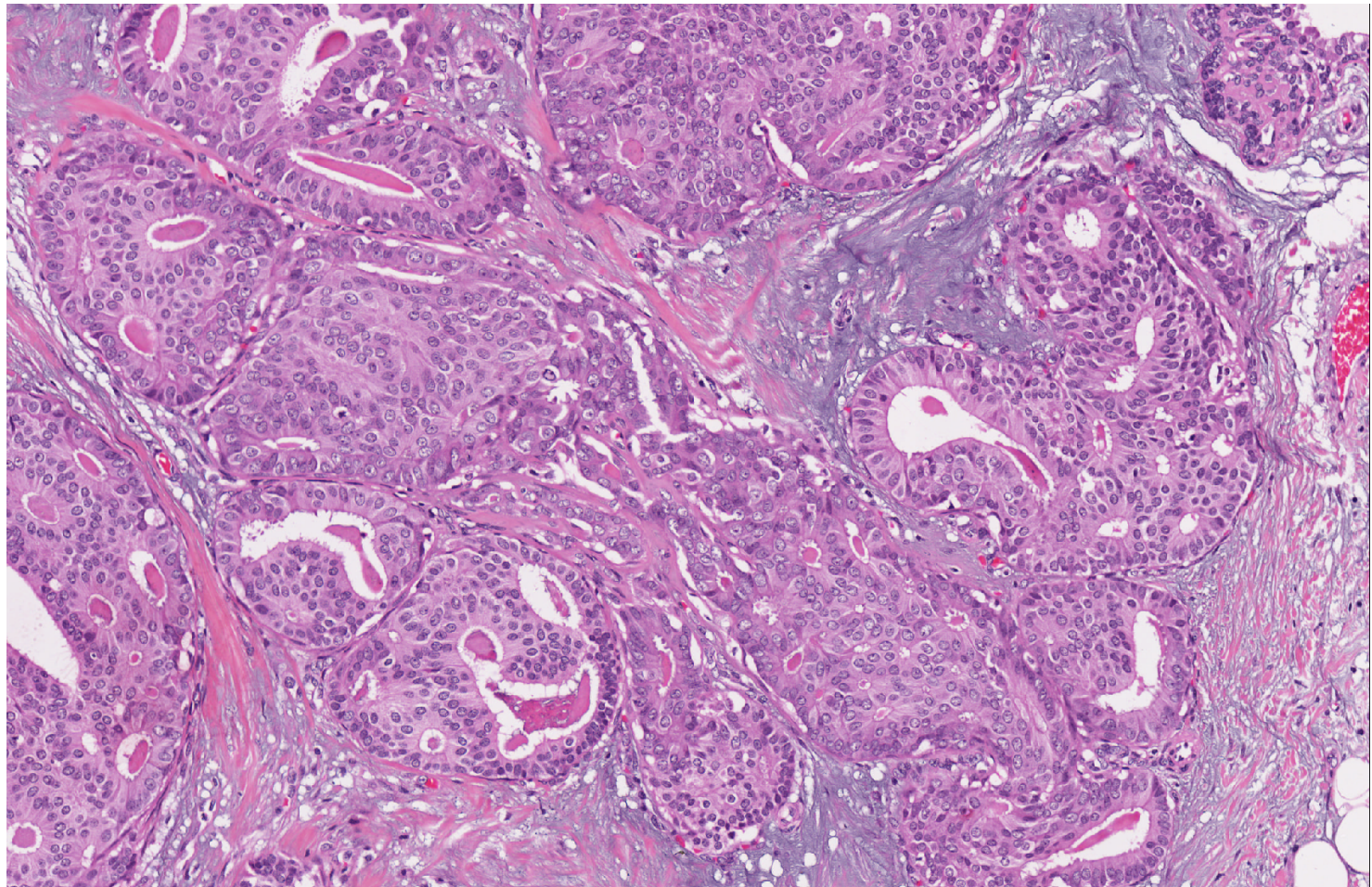




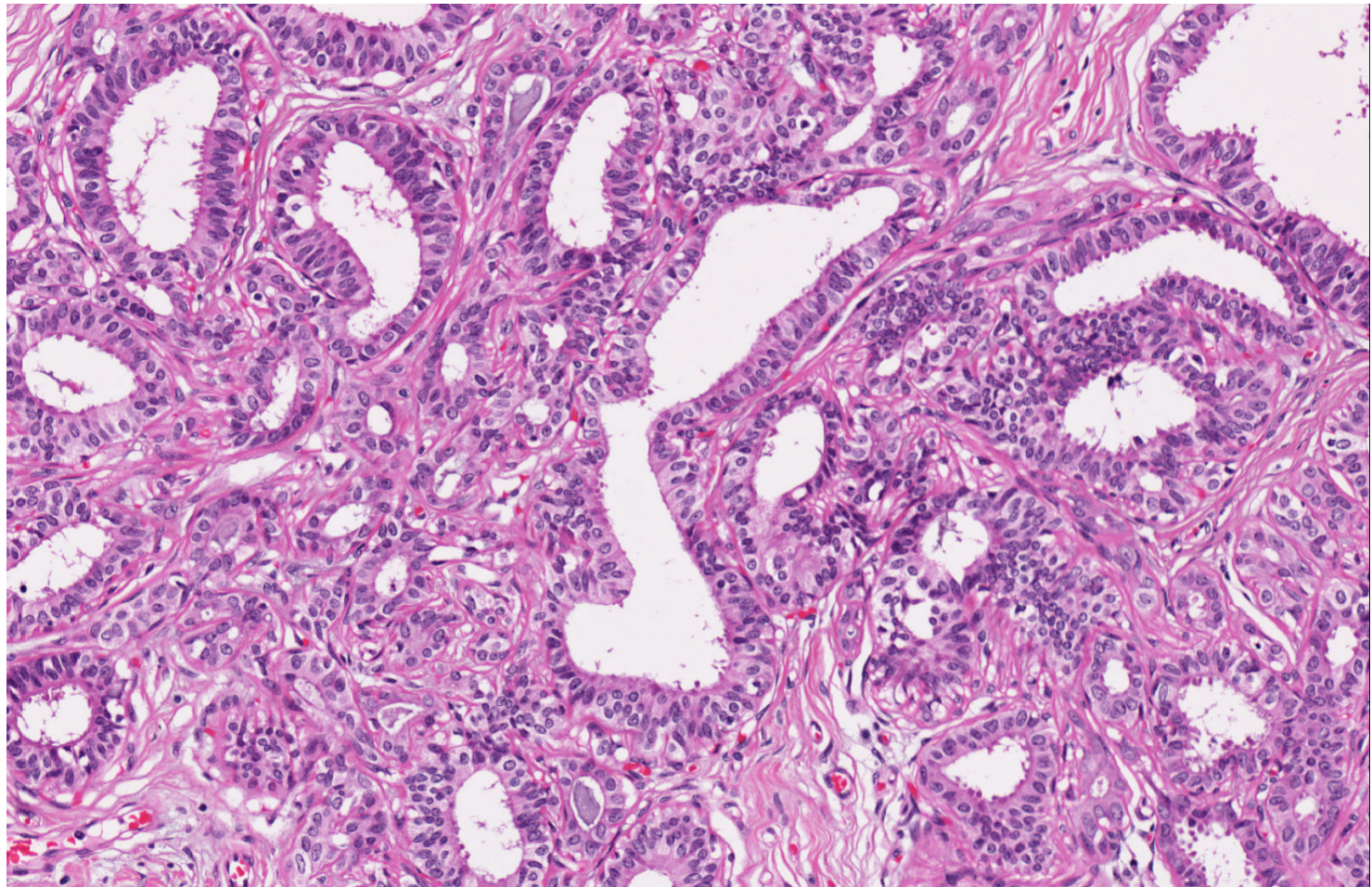




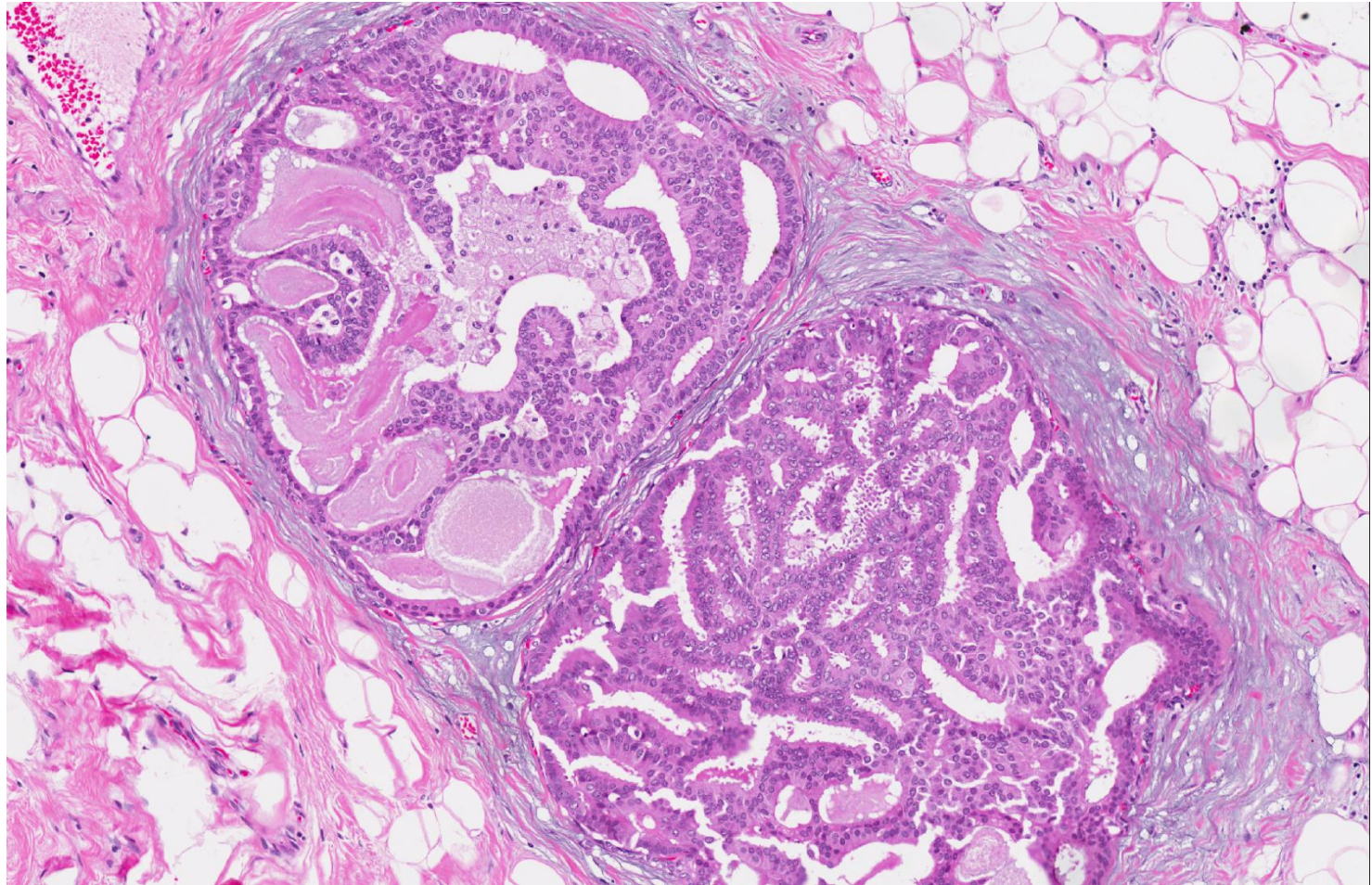






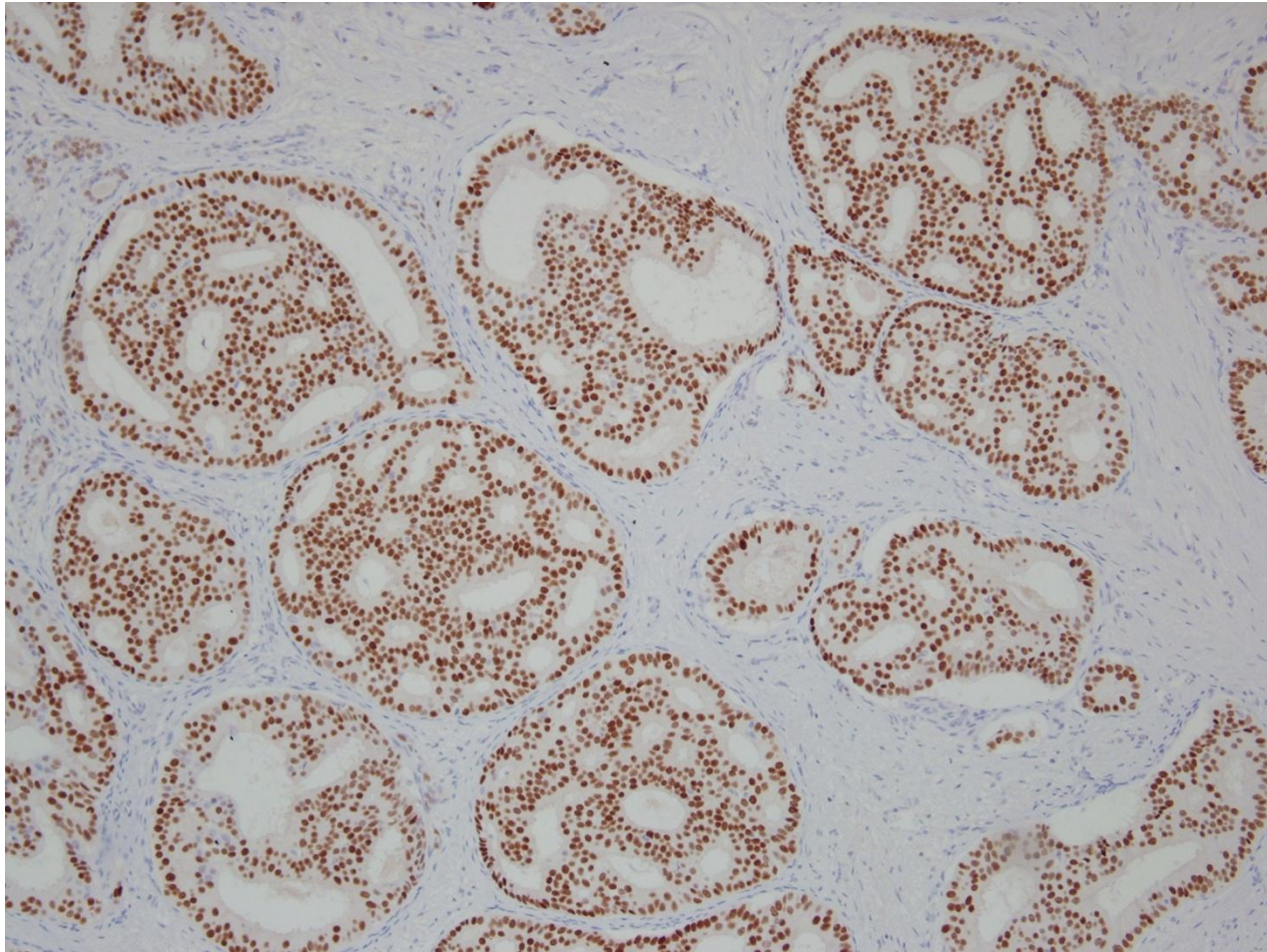




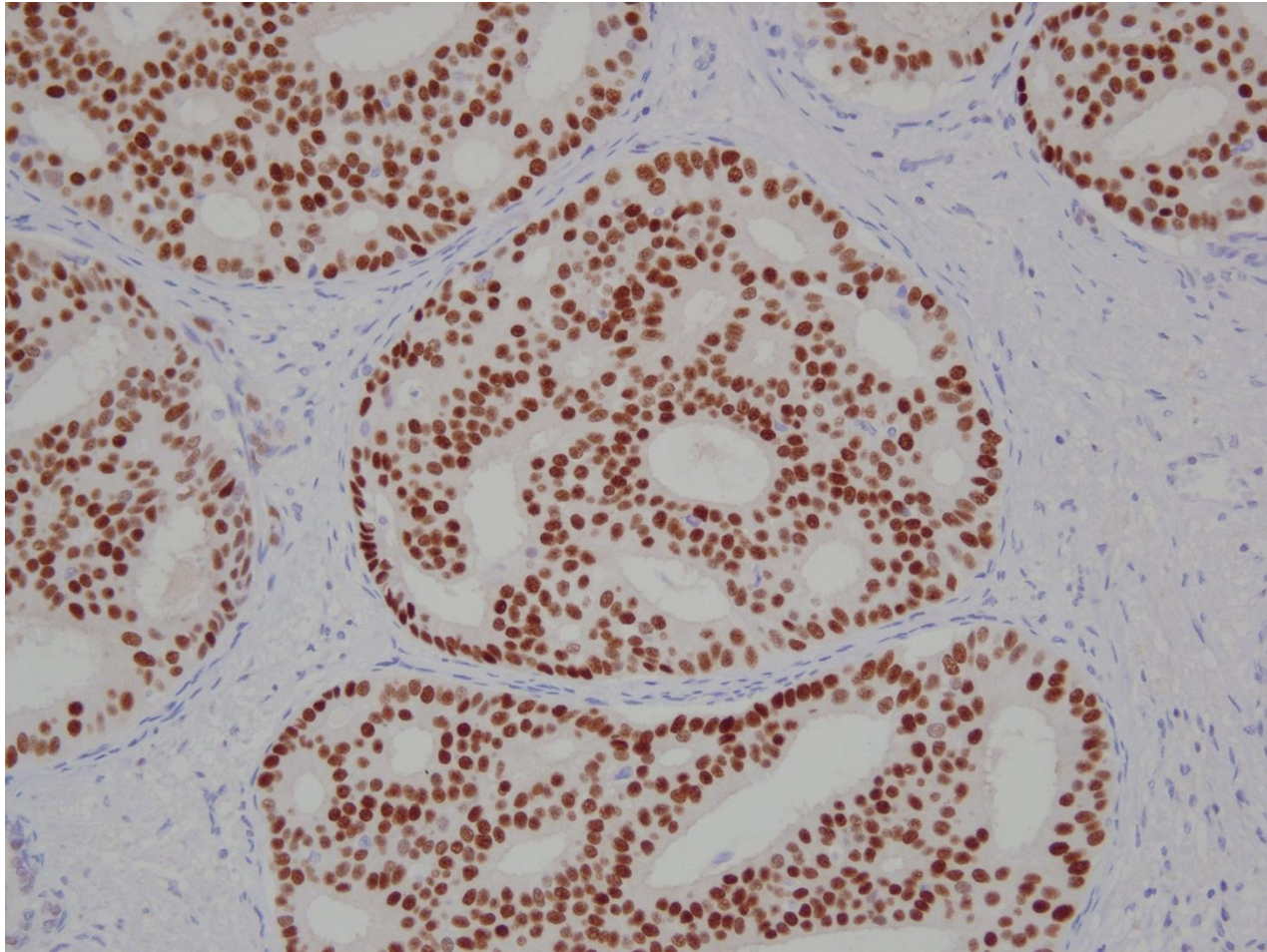




# ER

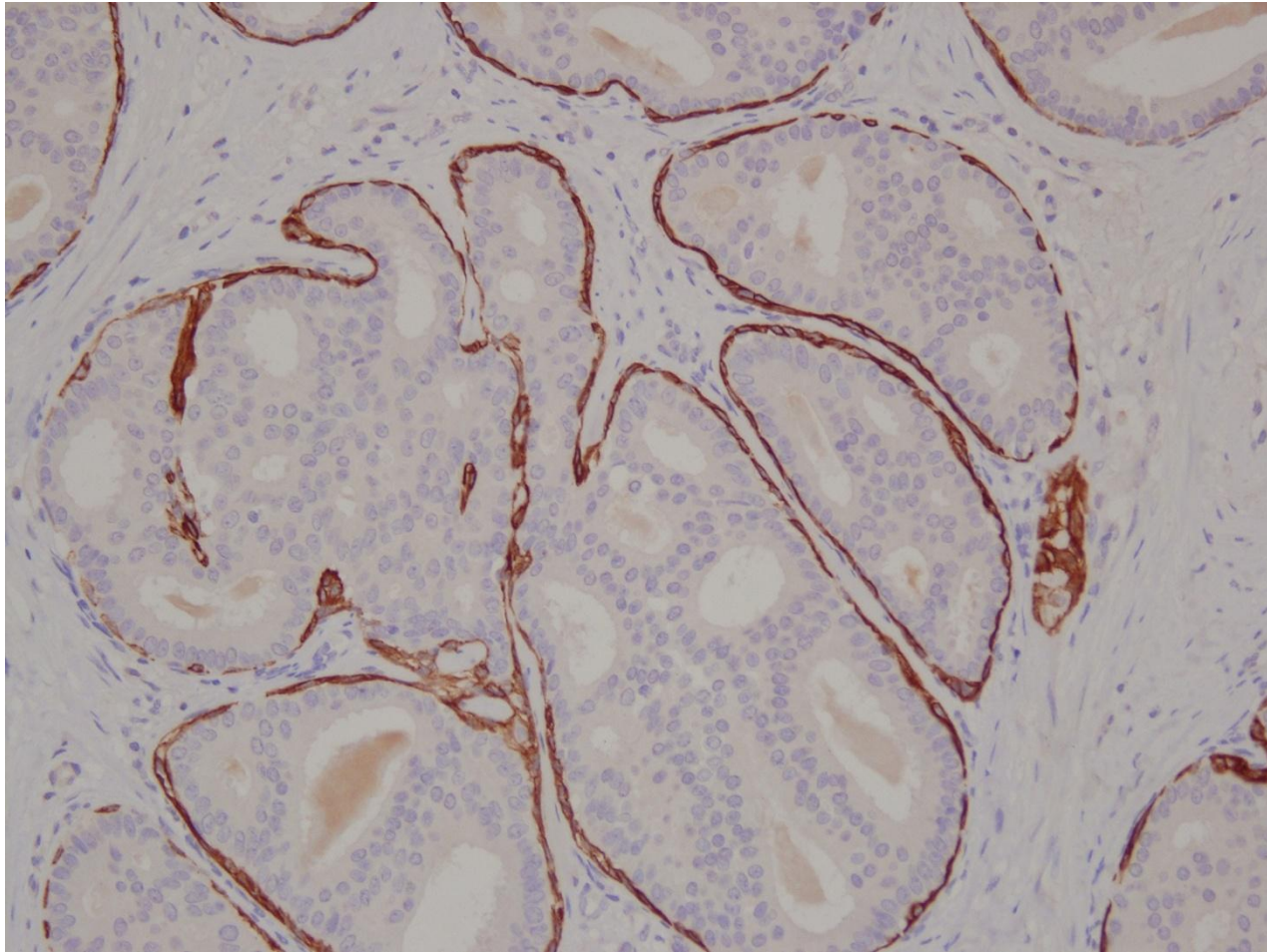


# ER



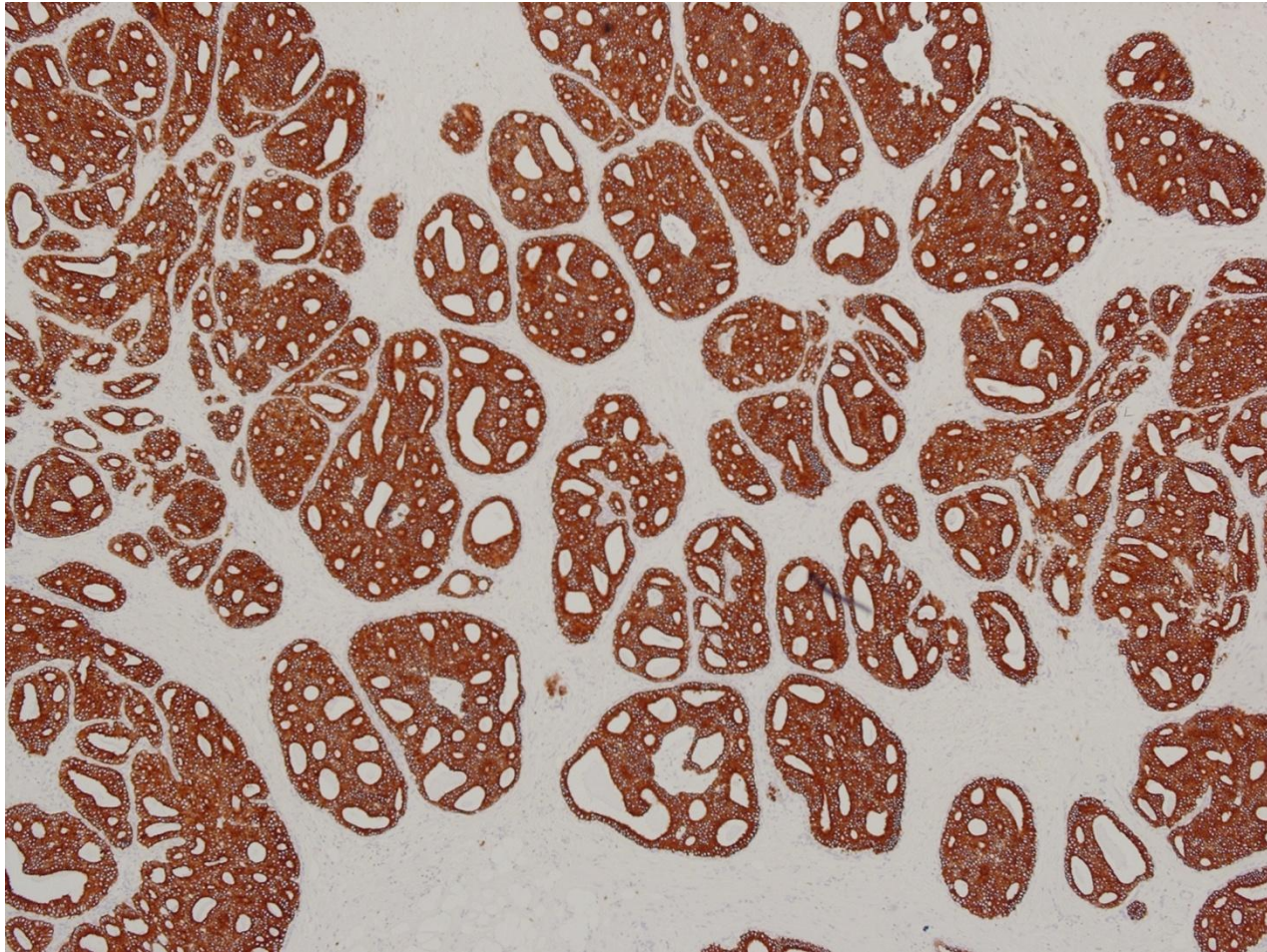


# CK14

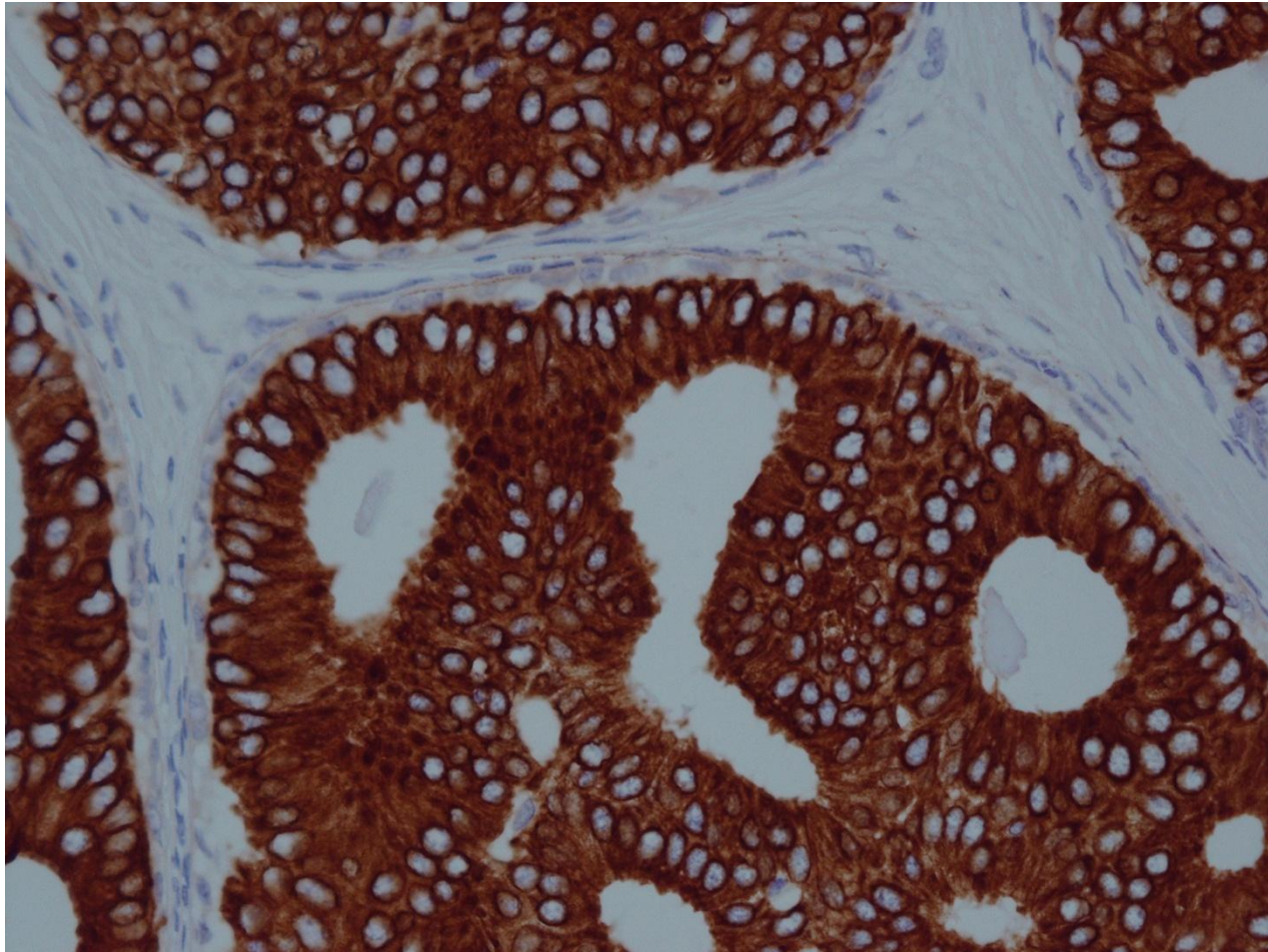




# Cam 5.2



# Cam 5.2



- DCIS, low to intermediate nuclear grade, with focal necrosis

## Cam 5.2

- Anti-cytokeratin 7 & 8.
- Antibody to low molecular weight keratins.
- Decorates luminal type breast epithelium.
- Diffusely positive in low grade DCIS.
- Does not highlight myoepithelial cells.

# Learning points

- Approach to distinction of ADH from DCIS, based on cytoarchitectural features and lesional extent.
- Use of ER, CK14, Cam 5.2 to aid in diagnosis of ADH/DCIS.