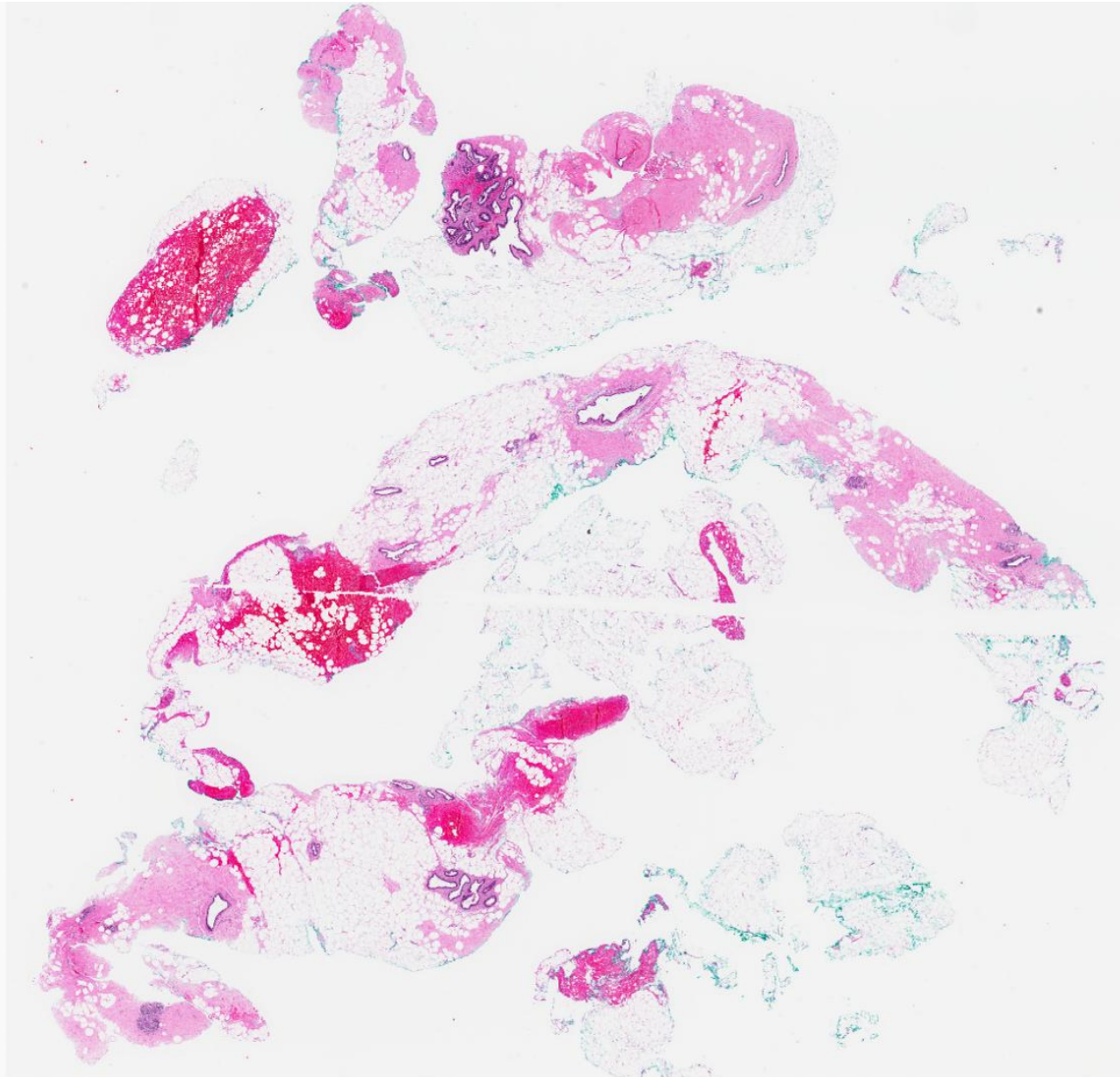
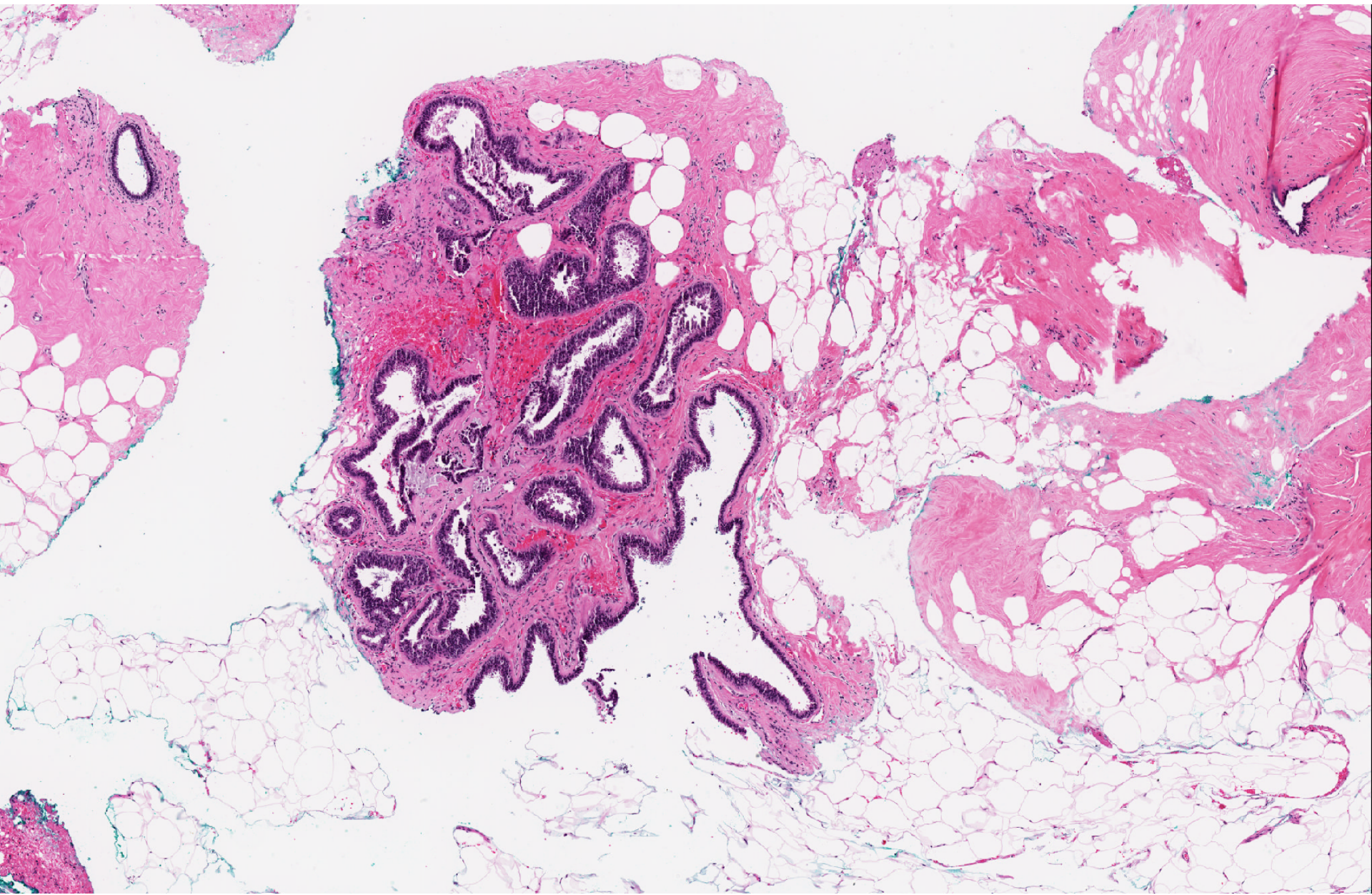
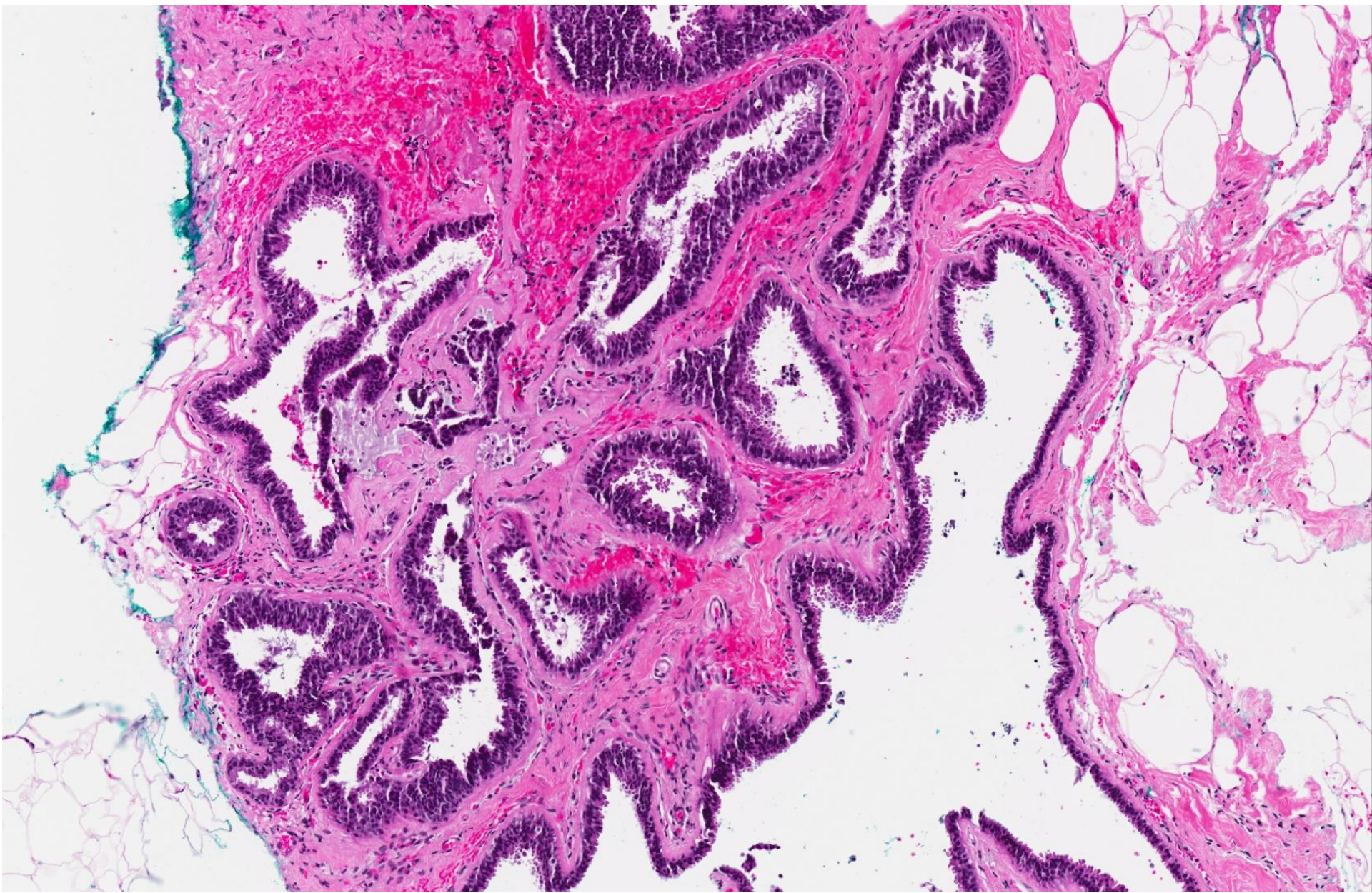
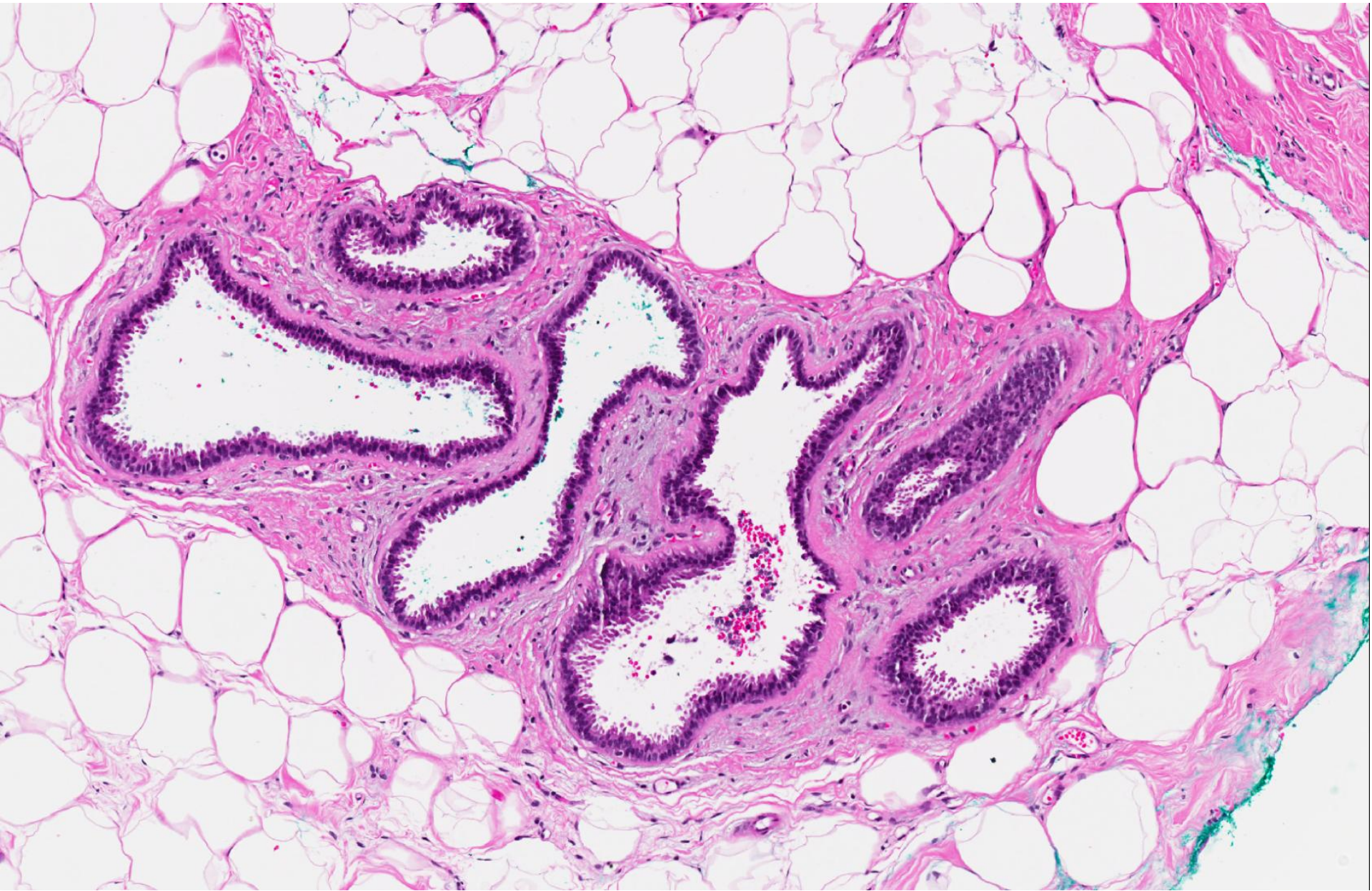


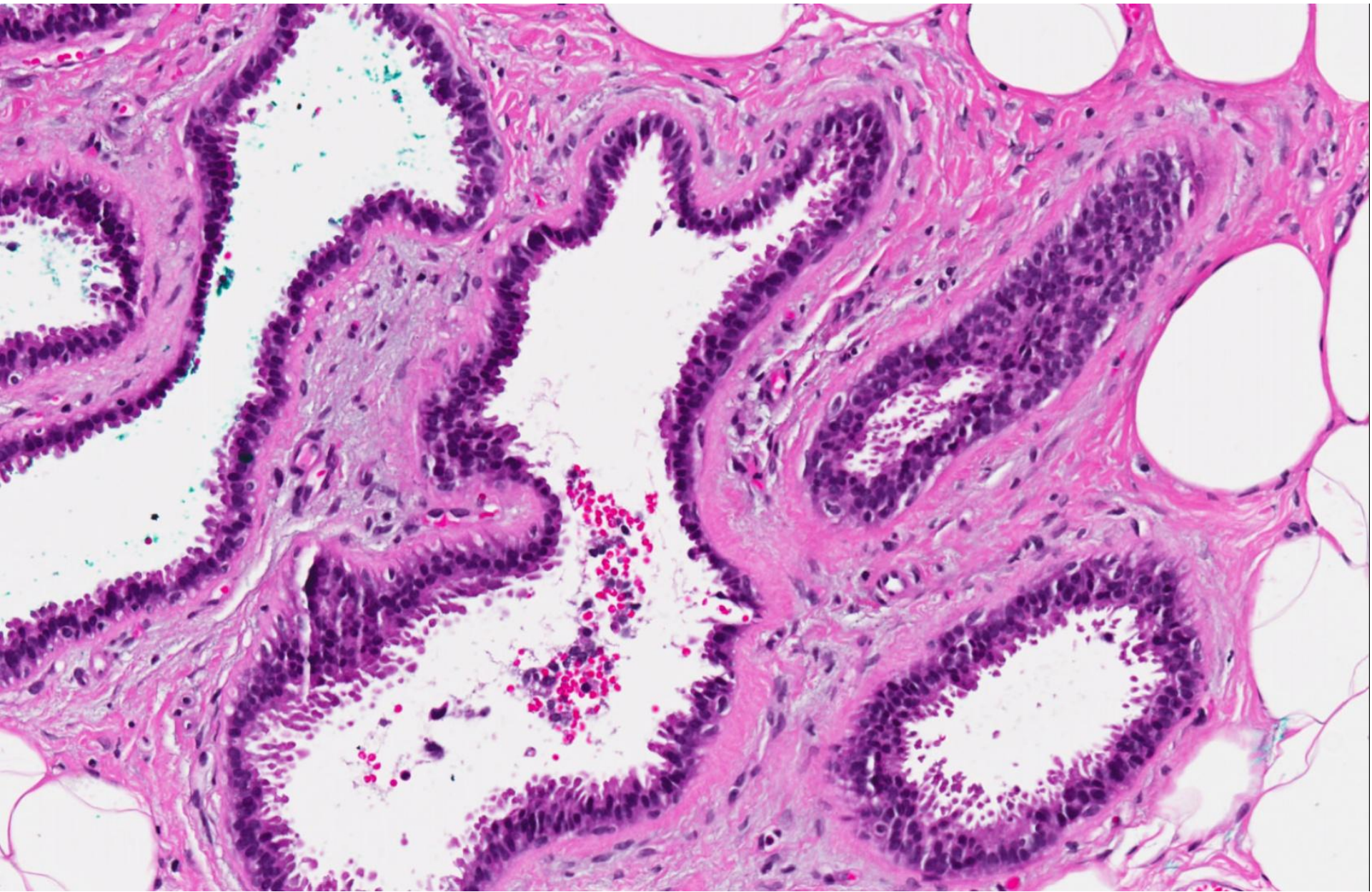
- Set B.10
- 50 year old Malay female underwent stereotactic mammotome biopsies for screen detected calcifications of the upper outer quadrant of the right breast, radiologically reported as 'indeterminate'.

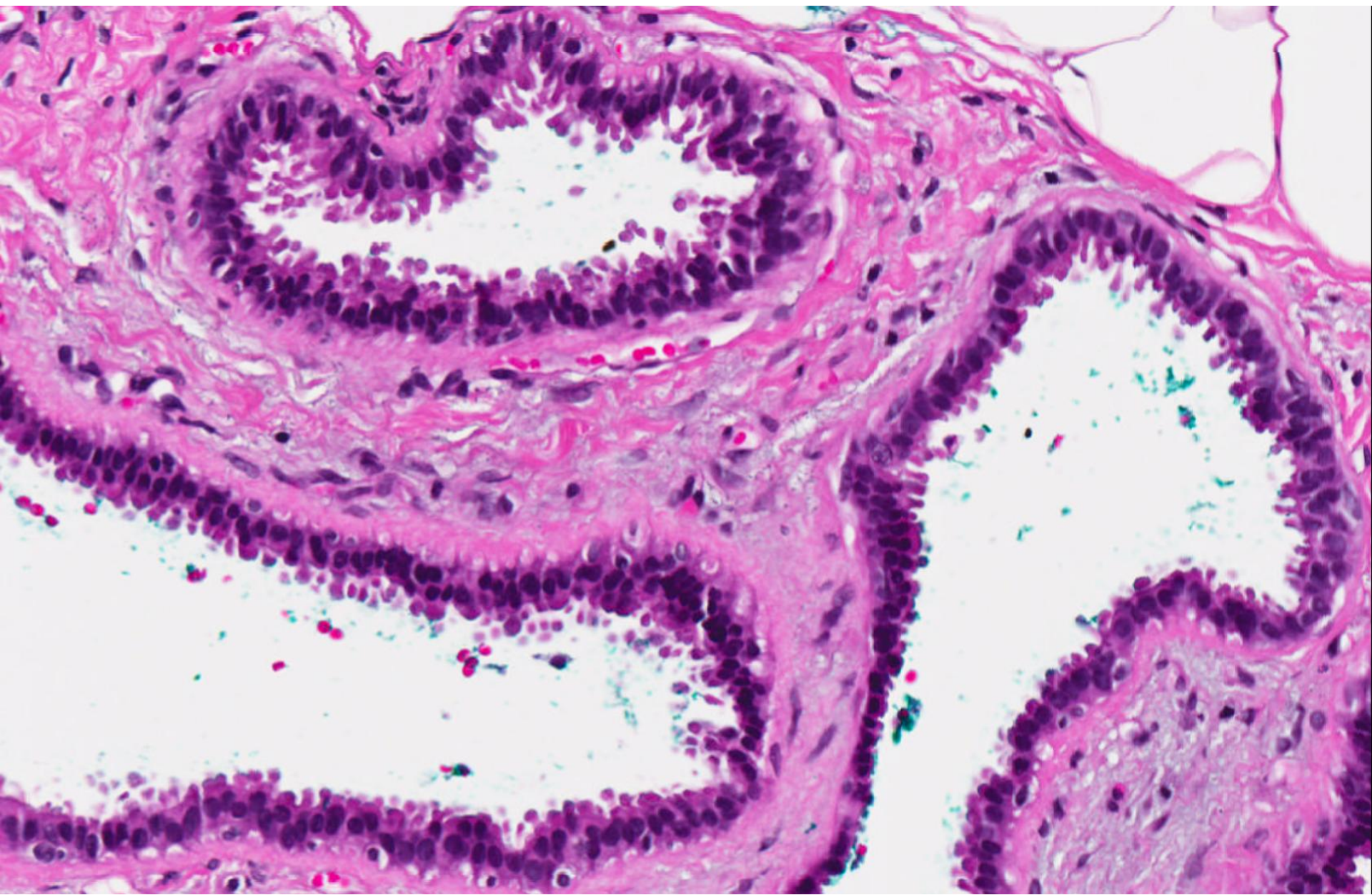


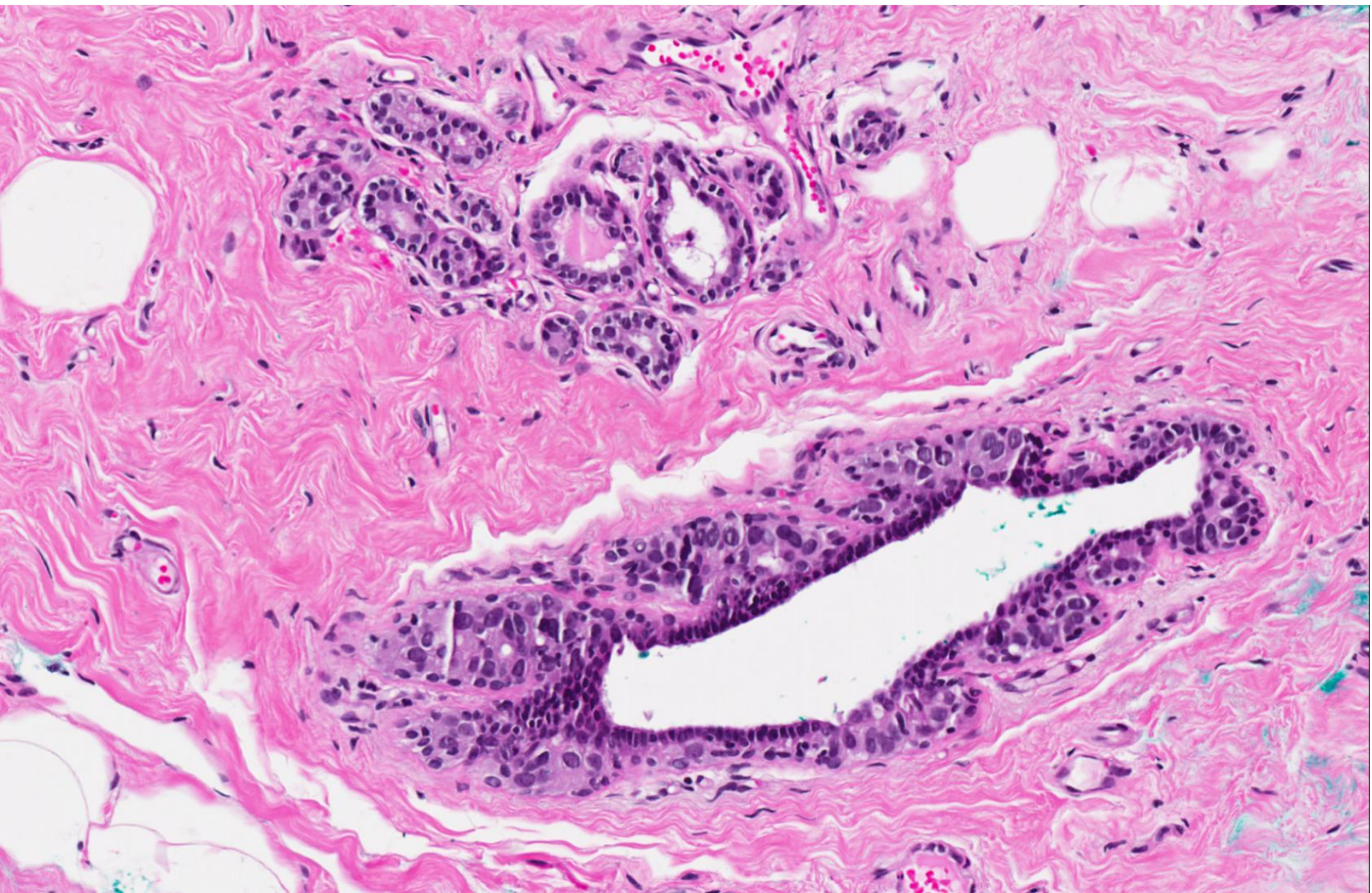




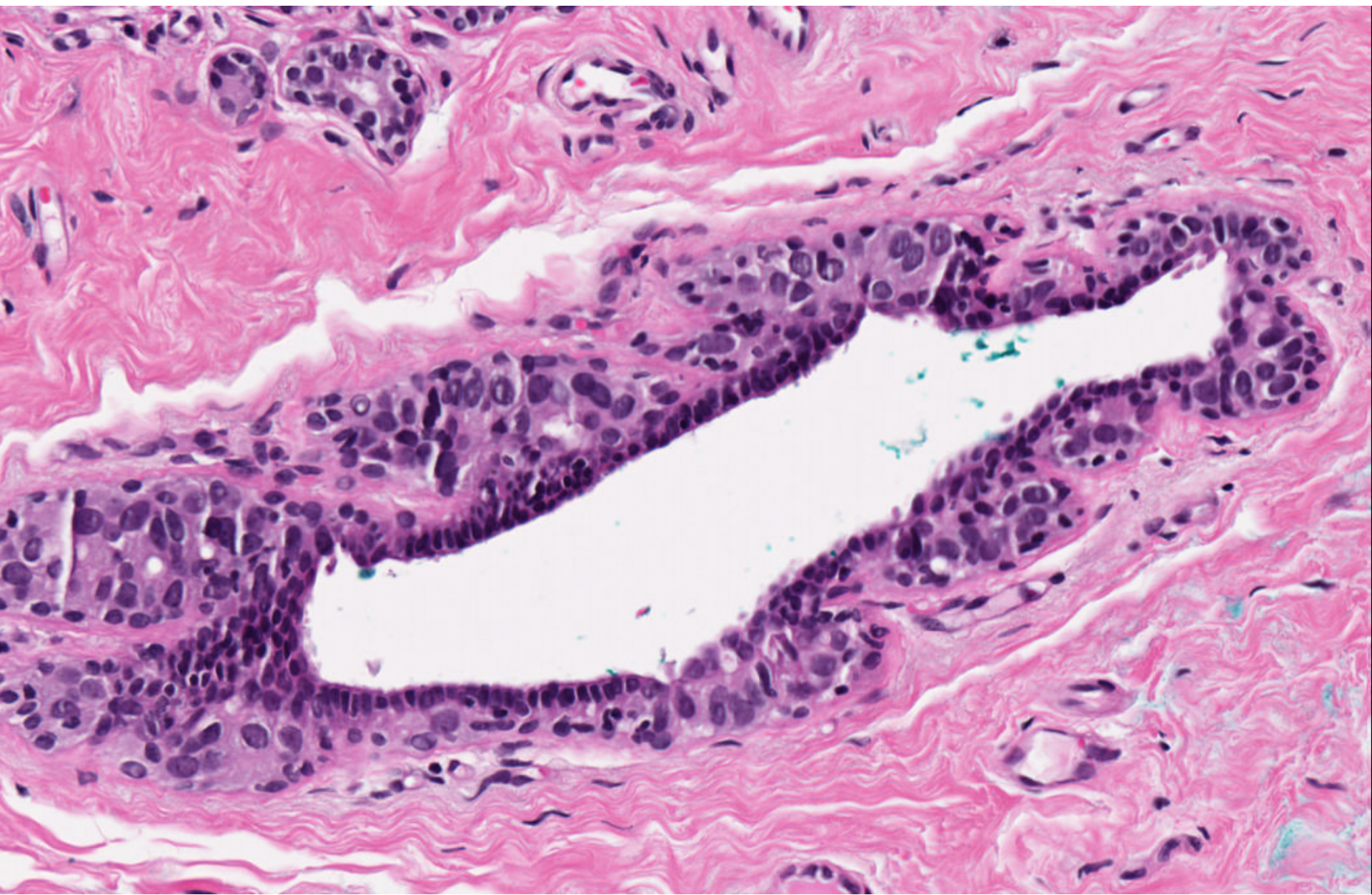


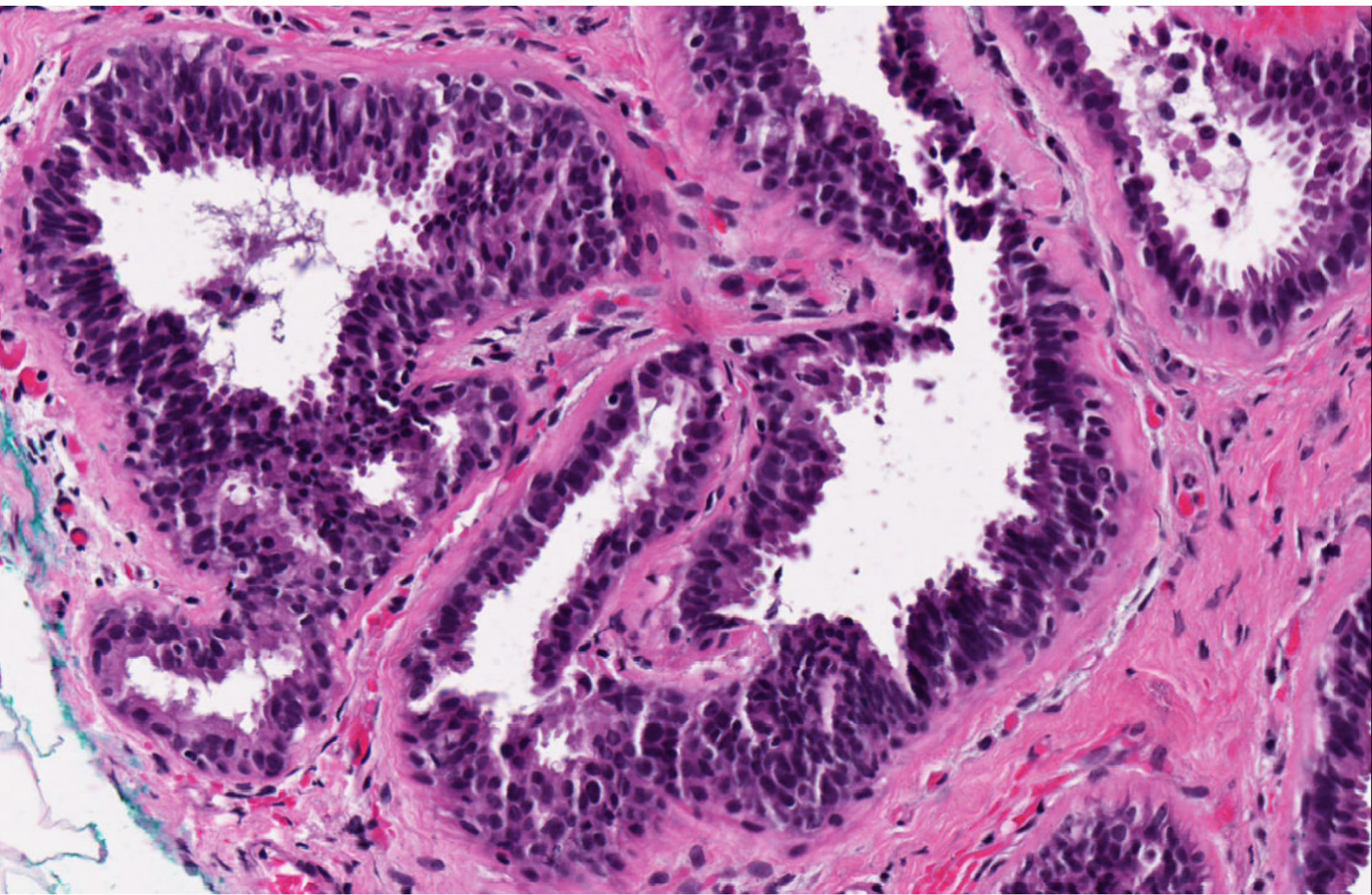


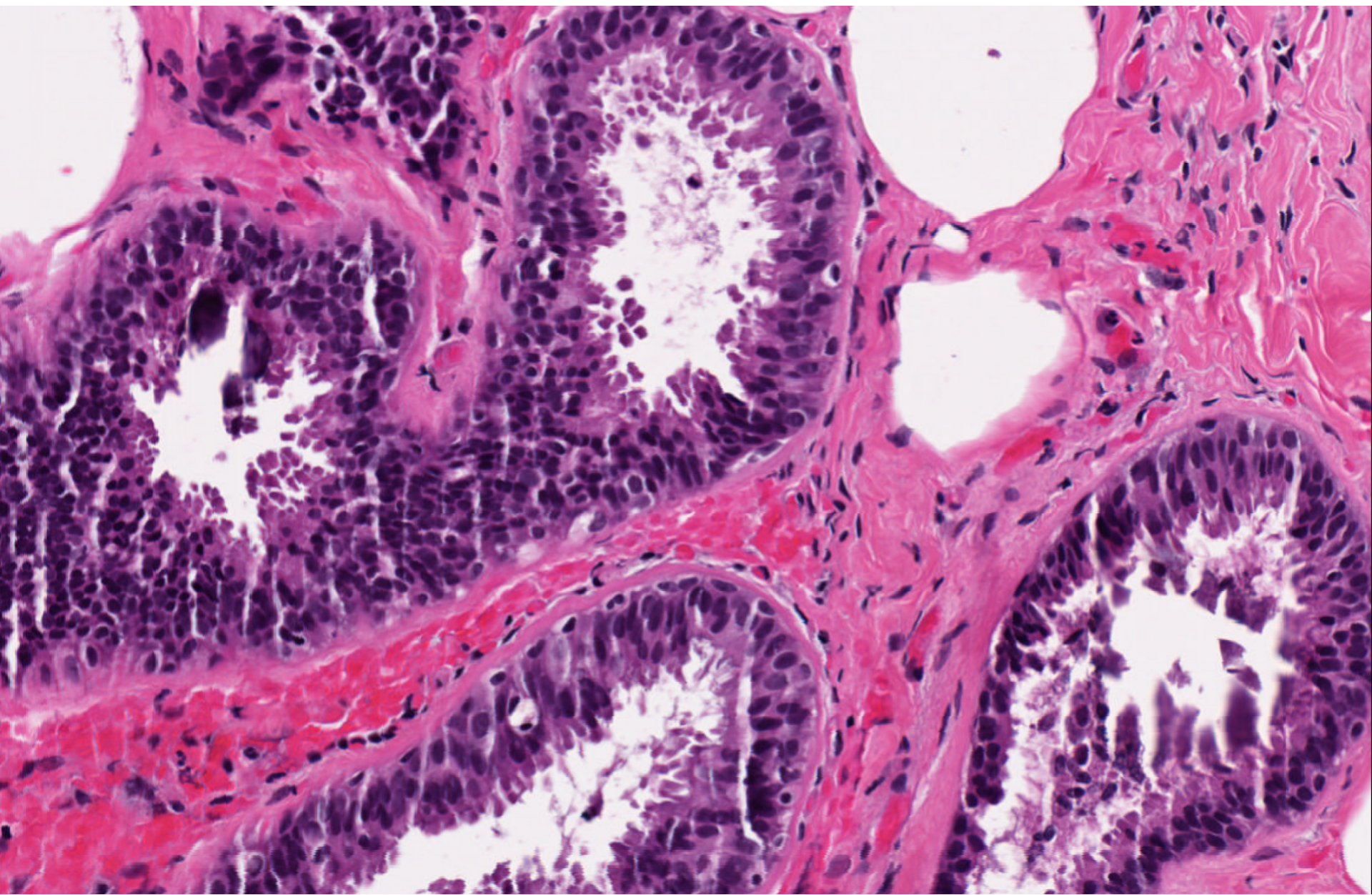












- Fibrocystic change with calcifications.
- Columnar cell change and hyperplasia, apical snouts and secretions.

# Columnar alteration

- Columnar alteration with prominent apical snouts & secretions (CAPSS):
  - Spectrum of lesions ranging from columnar alteration of lobules to low grade DCIS.
  - Observed in breast biopsies performed for microcalcifications.

*(Fraser et al. Am J Surg Pathol 1998;22:1521-7)*

- Association with tubular carcinoma:

*(Goldstein & O'Malley. Am J Clin Pathol 1997;107:561-6)*

# Learning points

- Diagnosis of CCC and CCH with and without atypia.
- Review criteria for FEA.