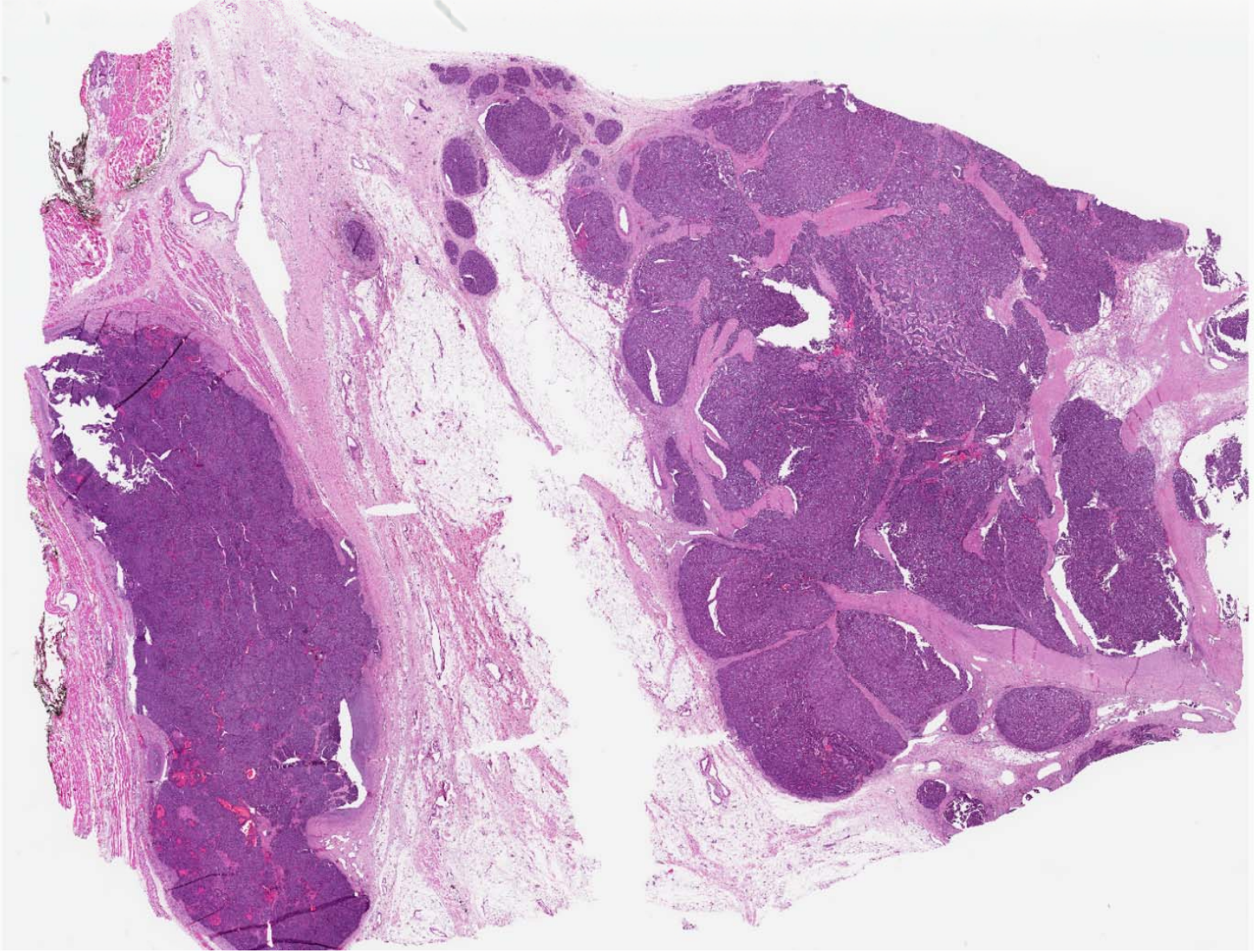
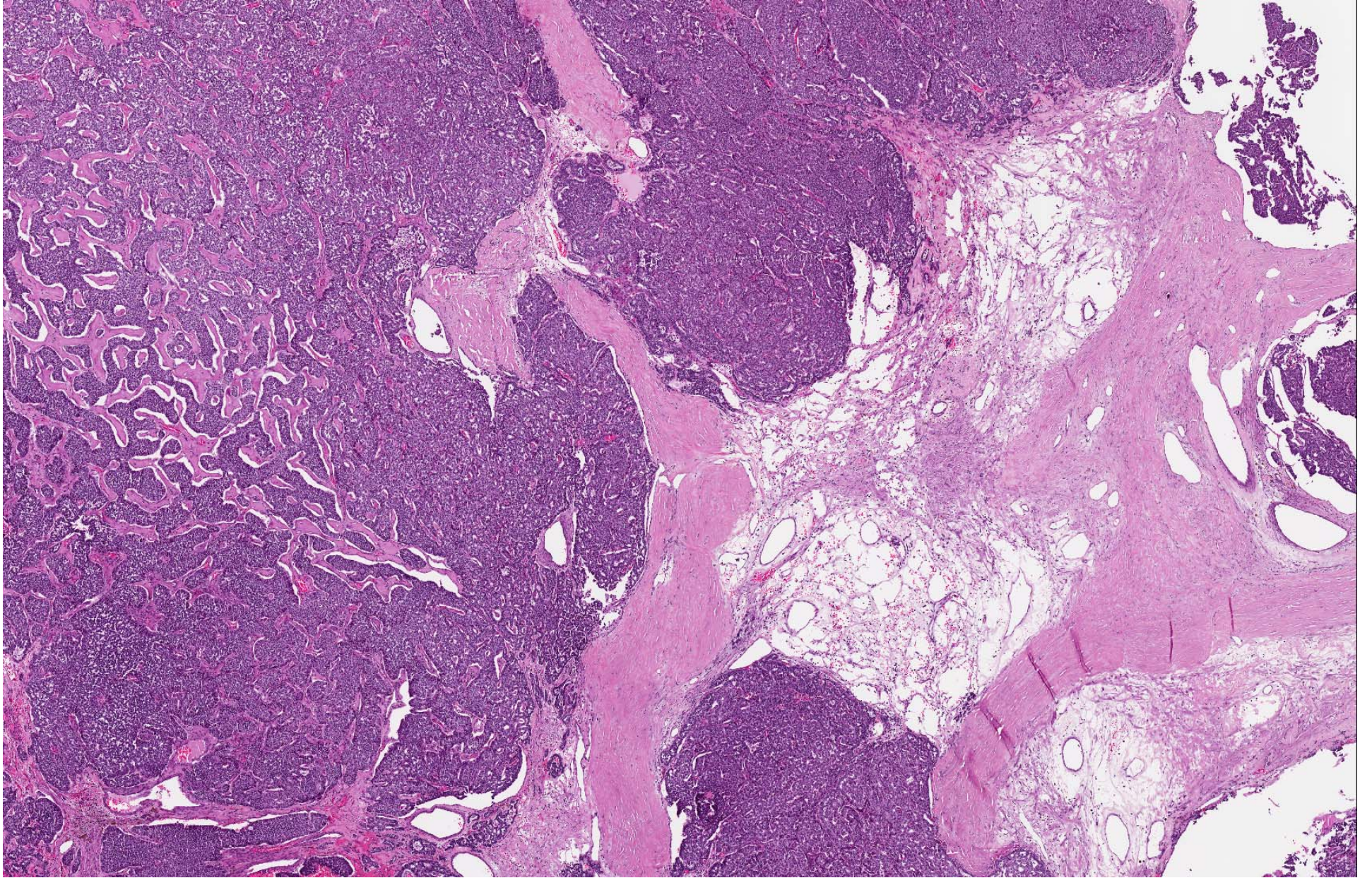
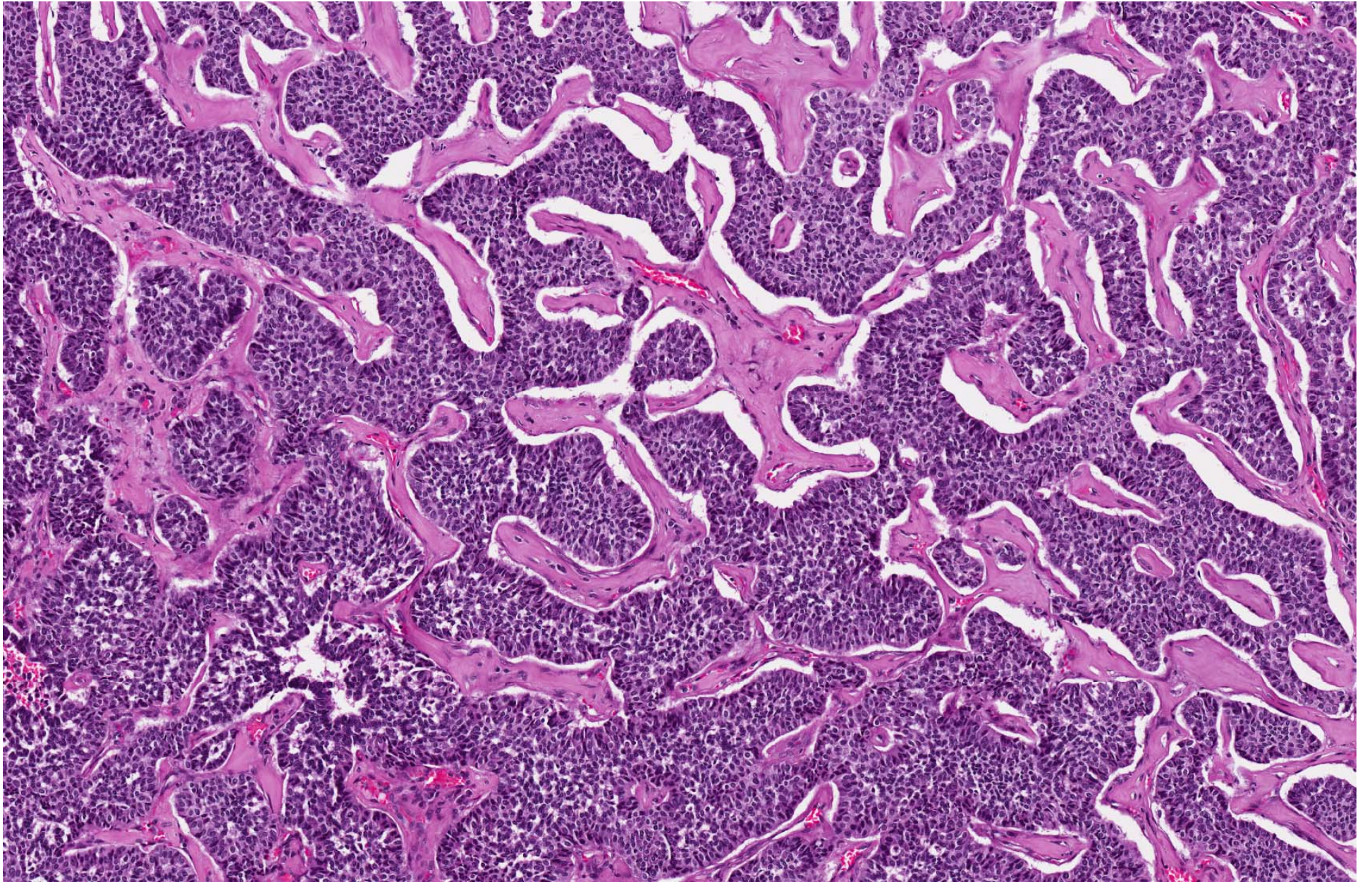


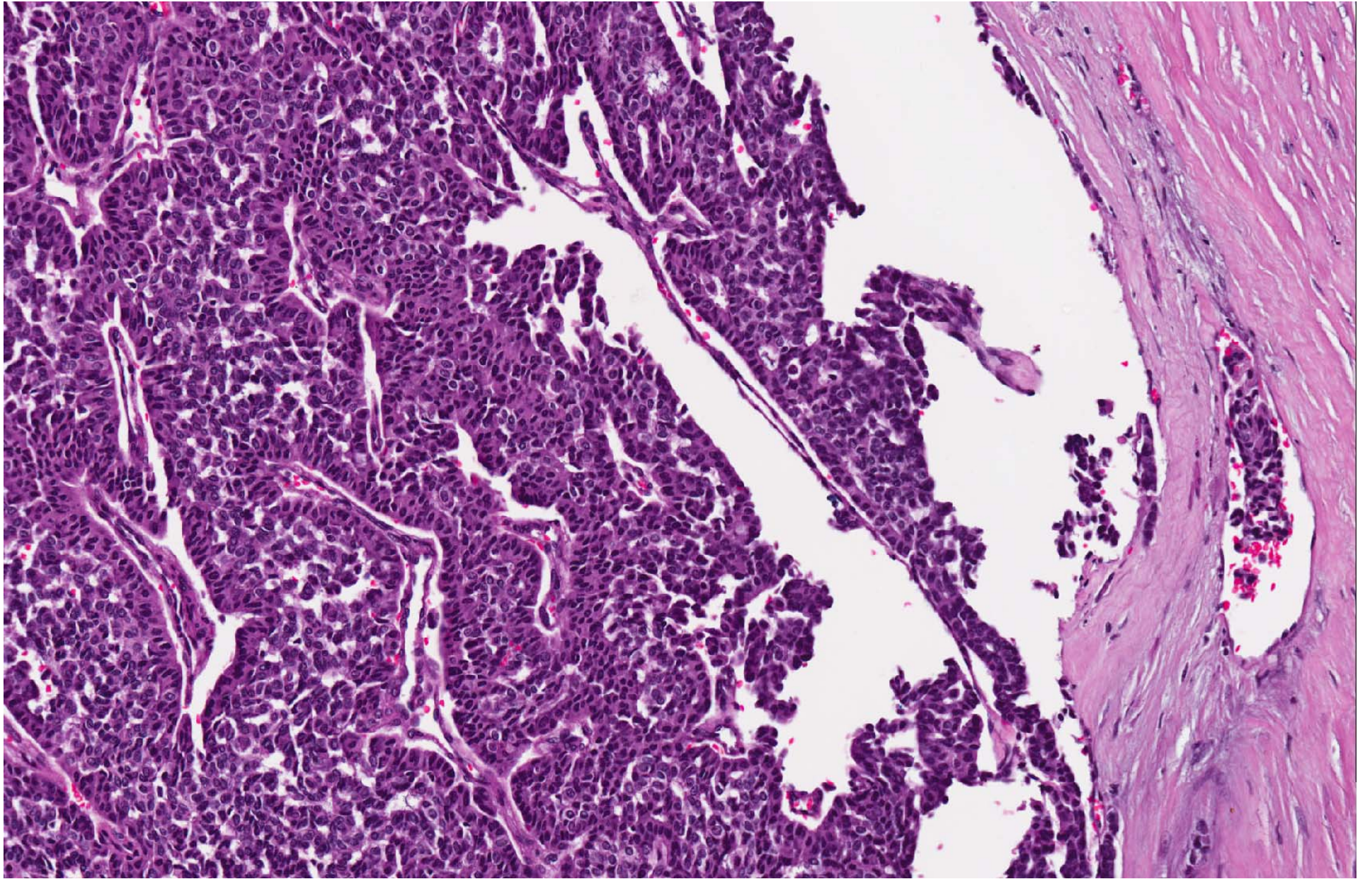
- Set A.4
- 75 year old Chinese lady presented with a large left breast mass. Underwent left mastectomy and axillary clearance.

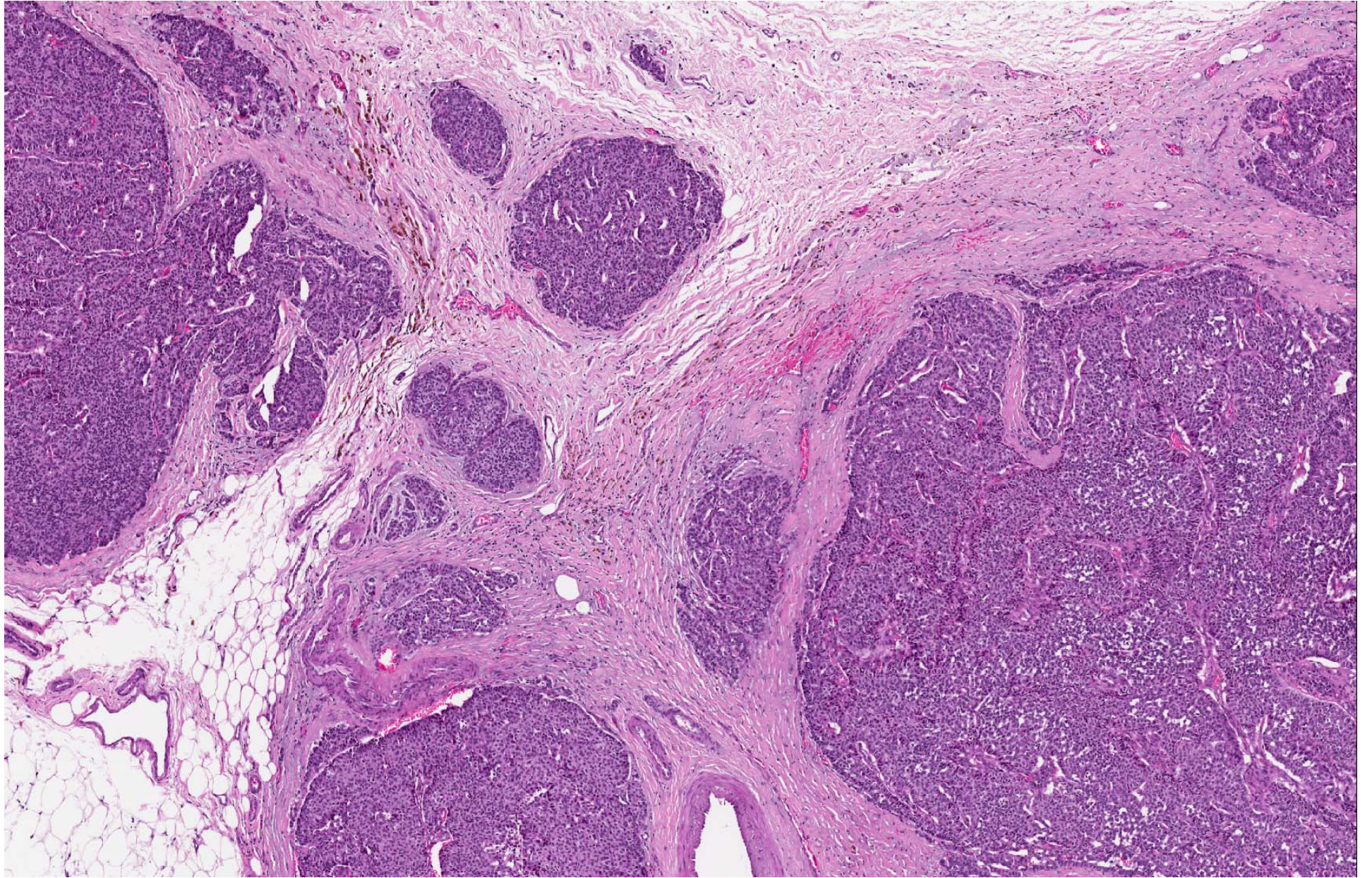


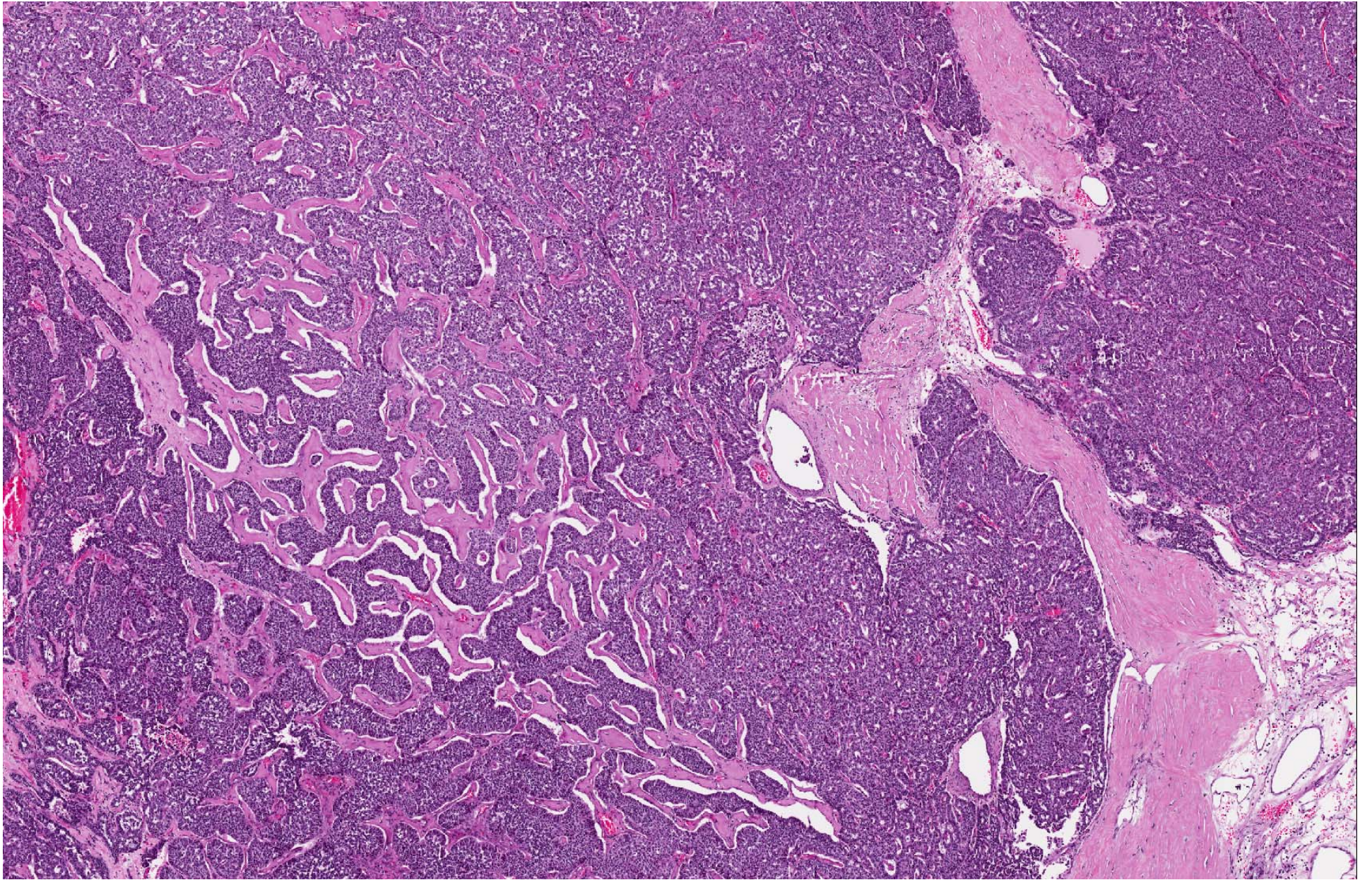


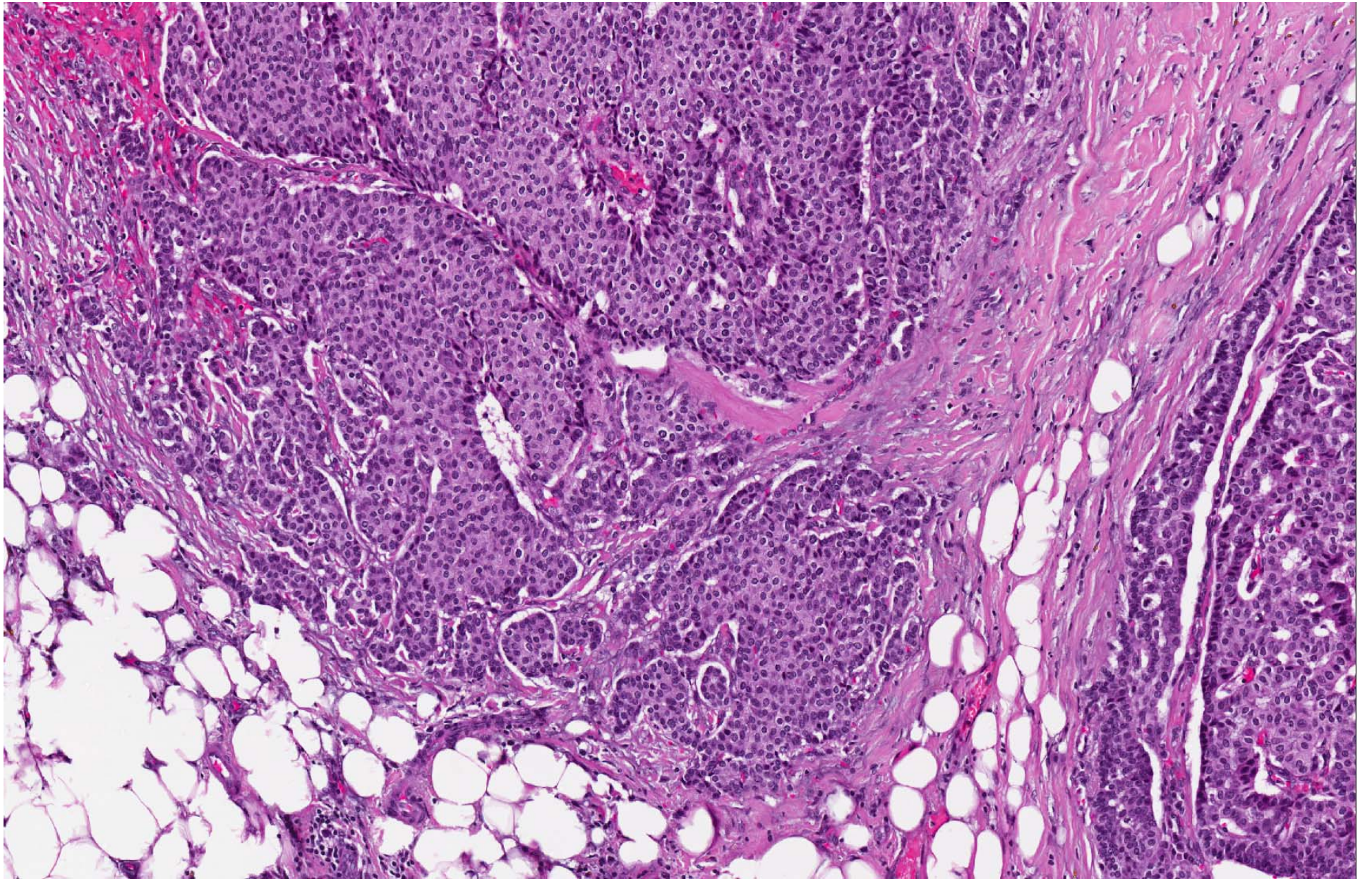


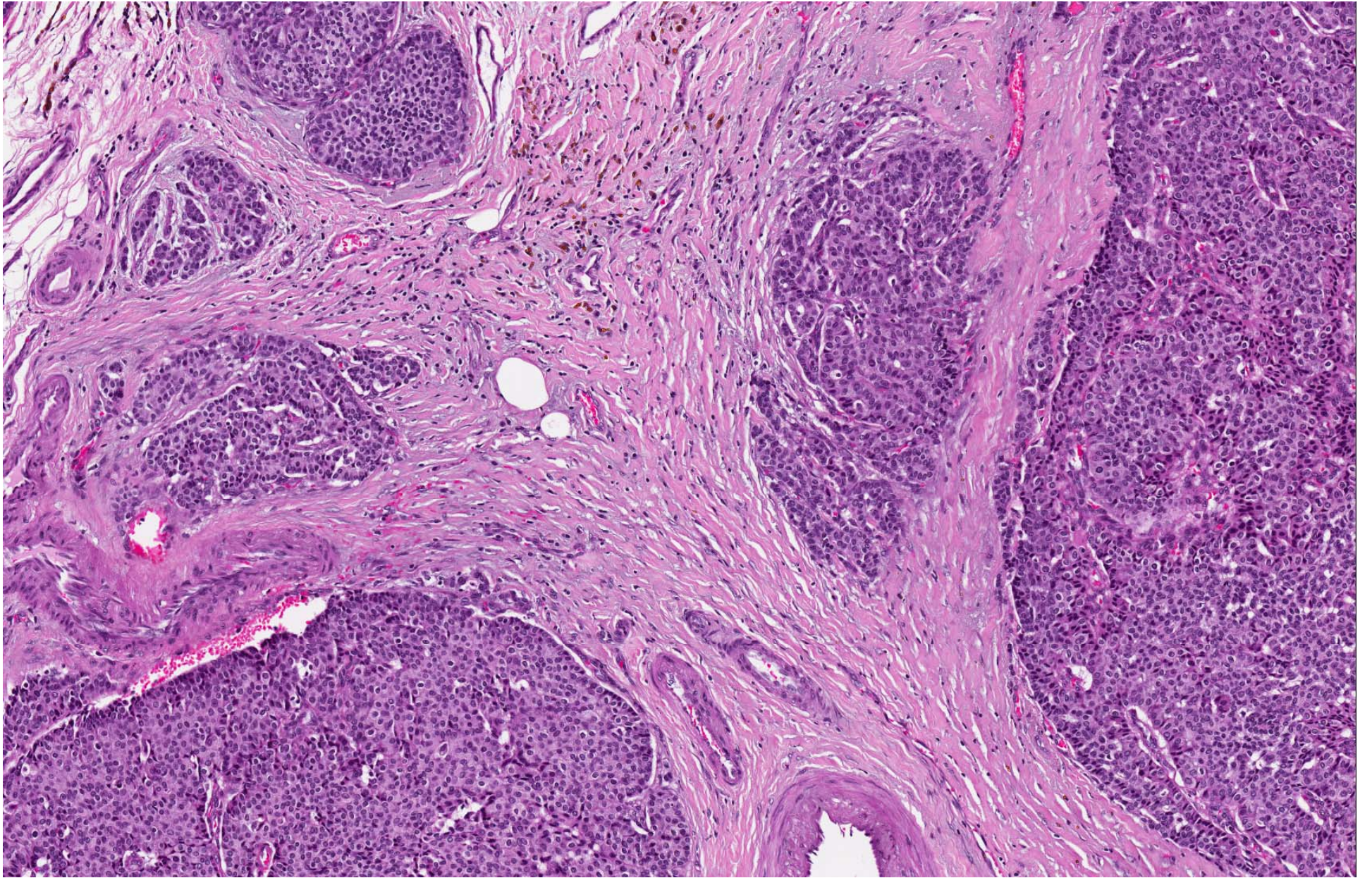


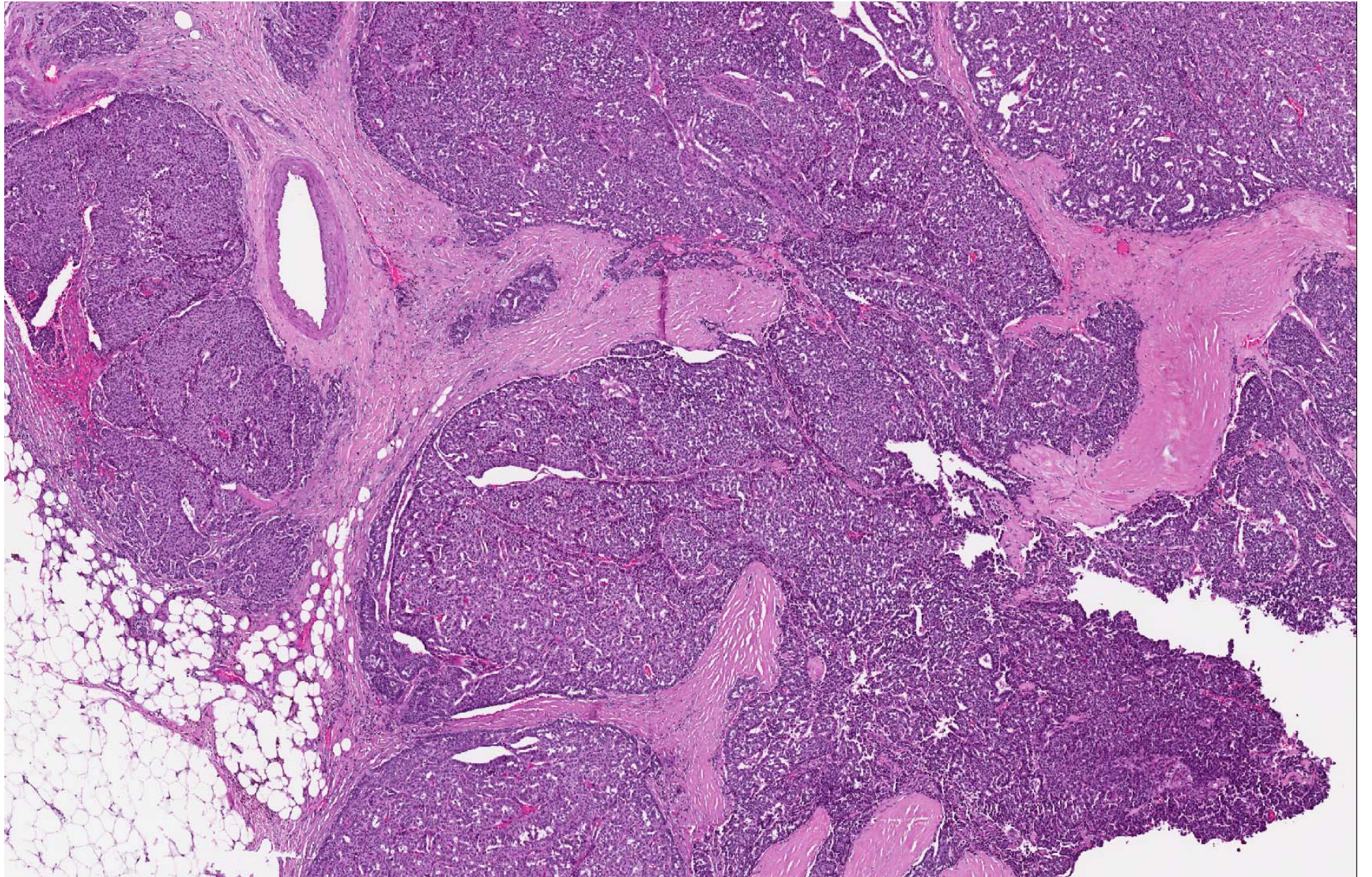


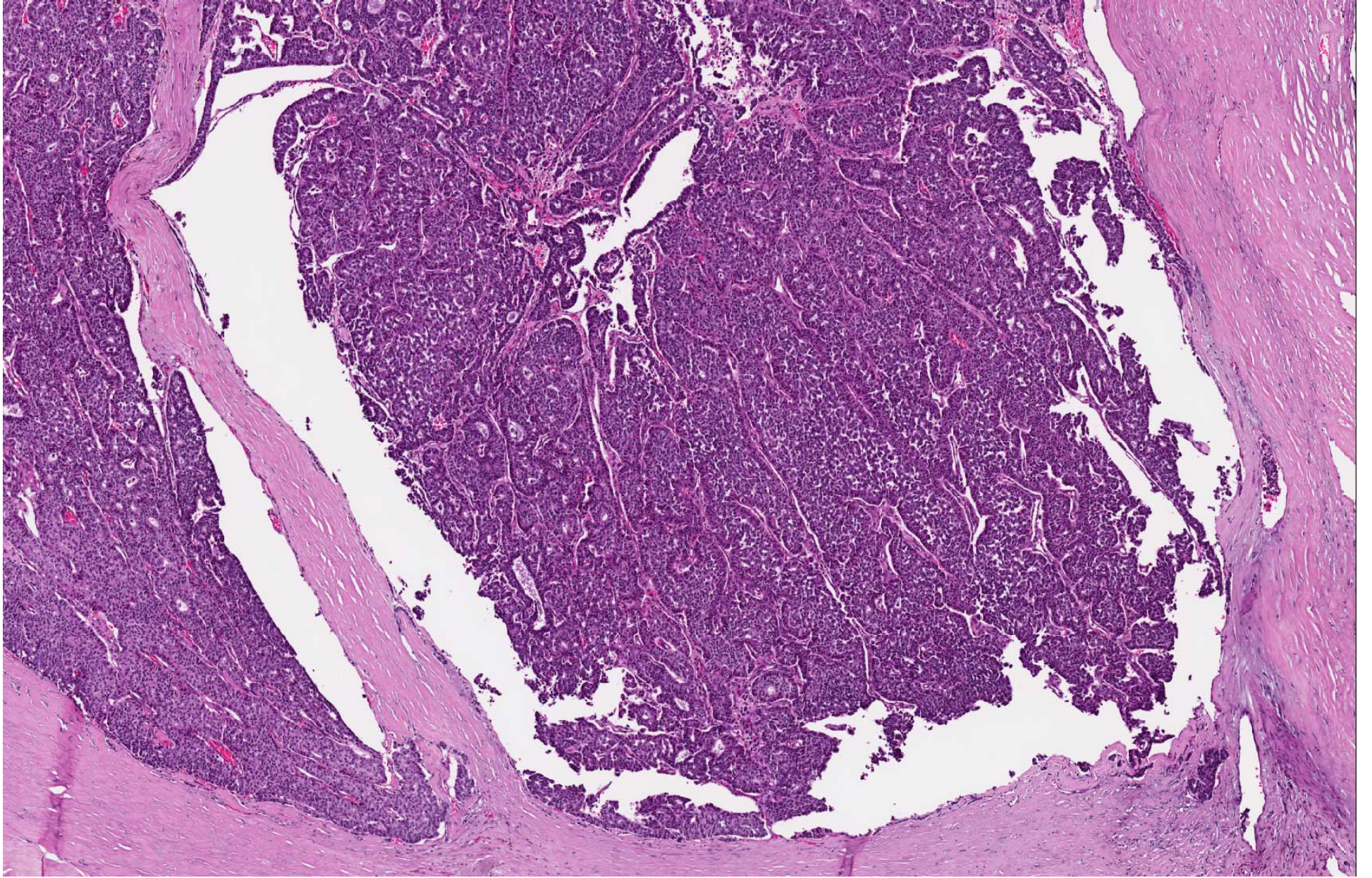


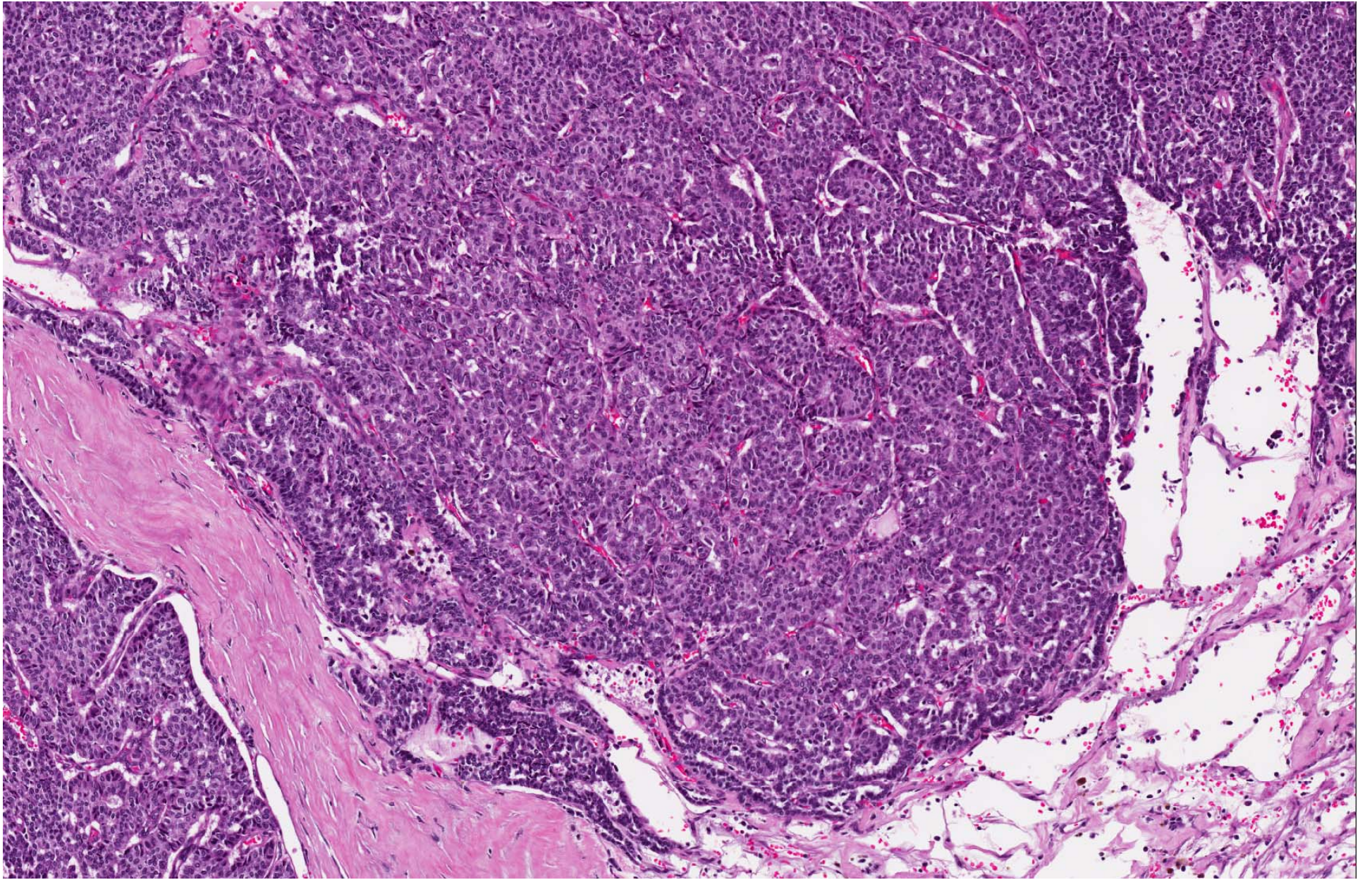




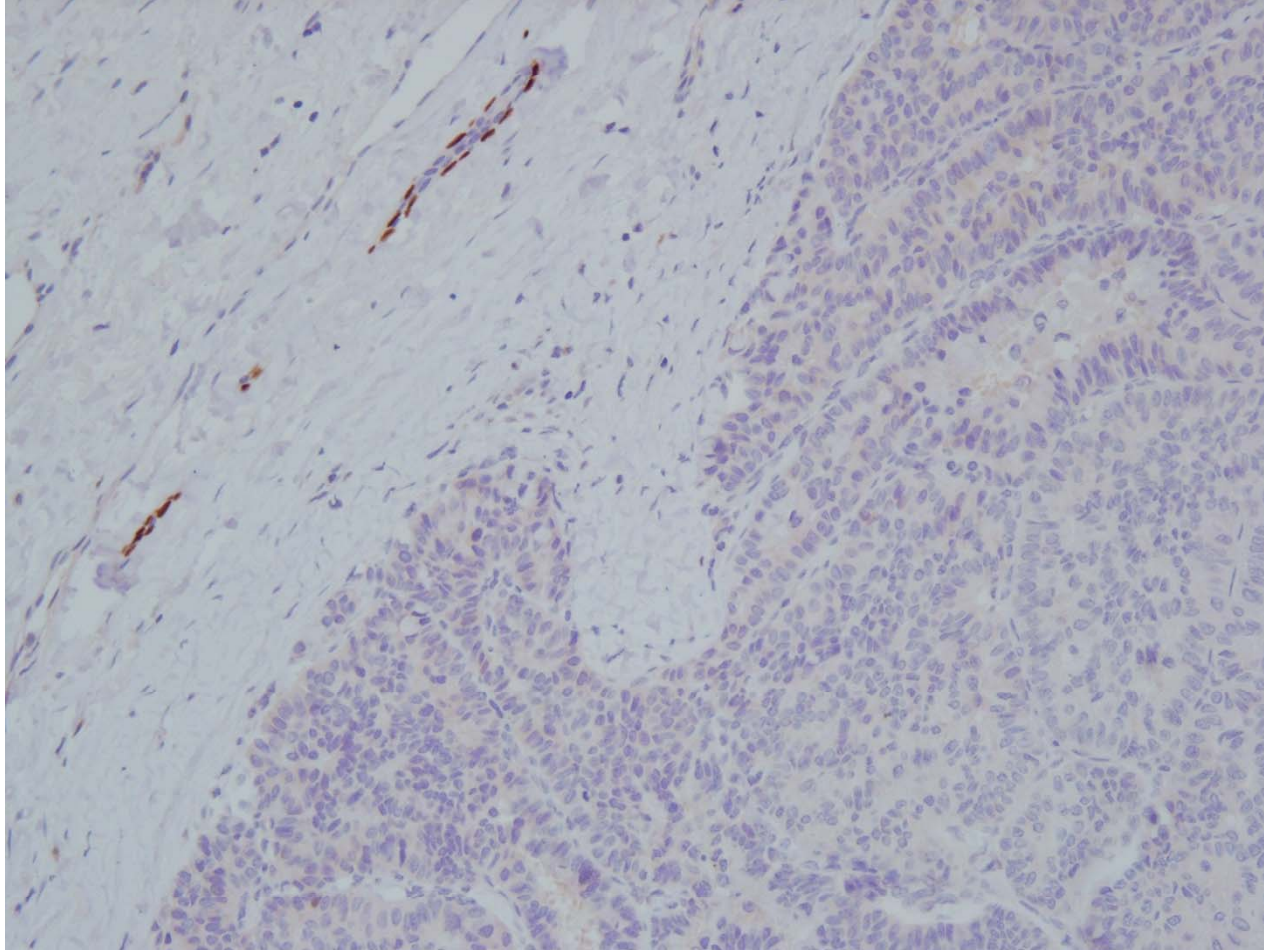




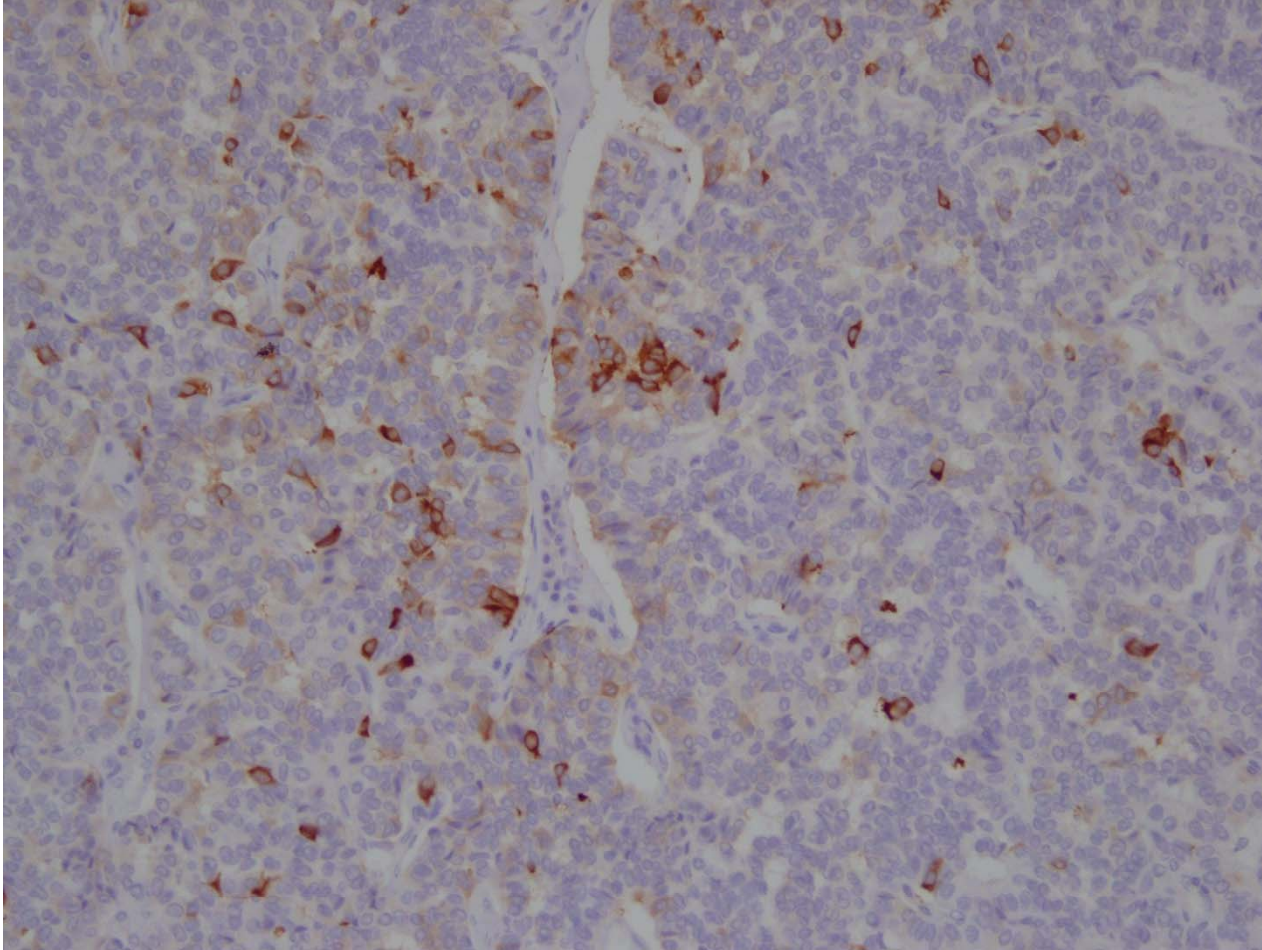




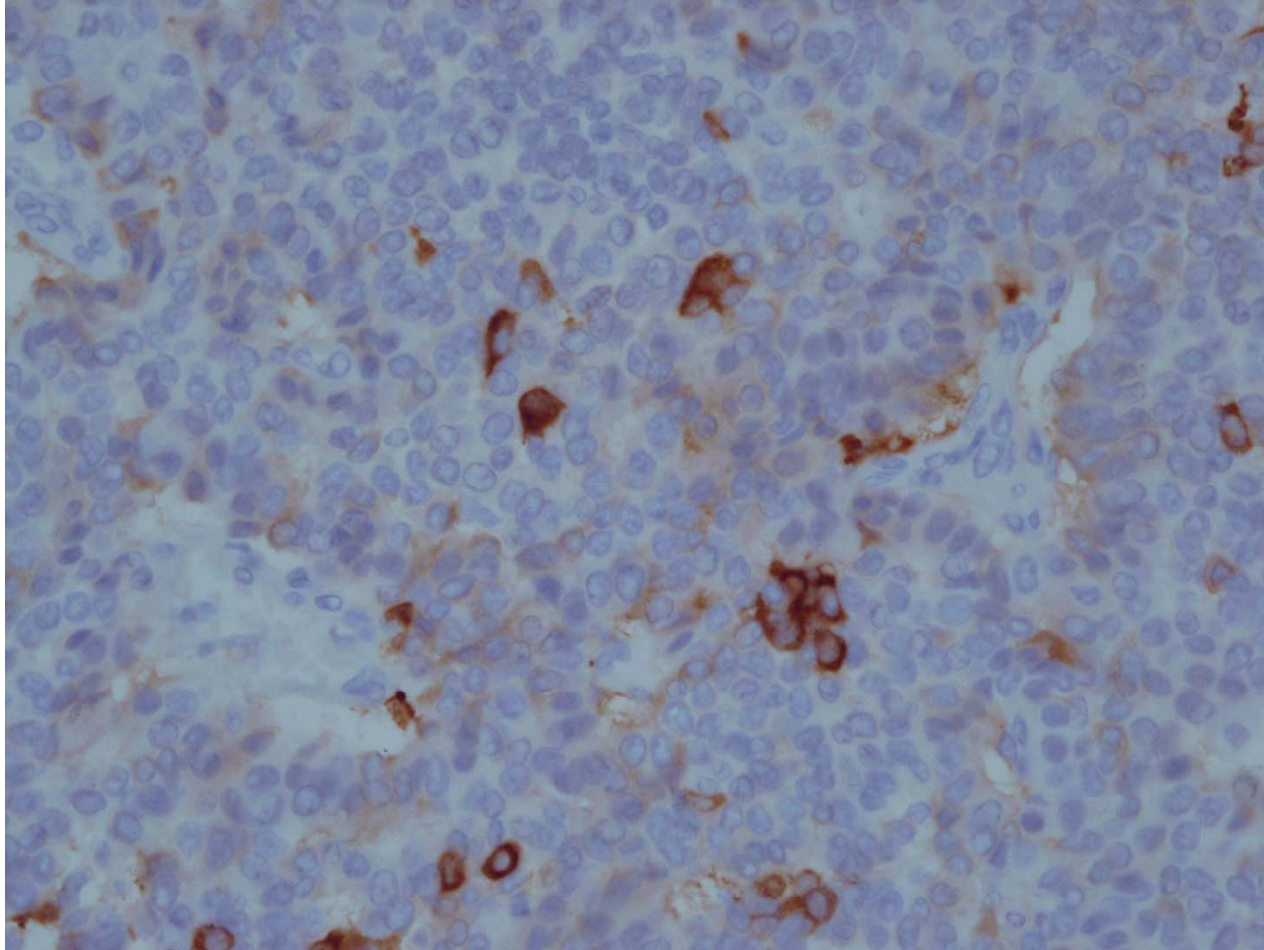
p63



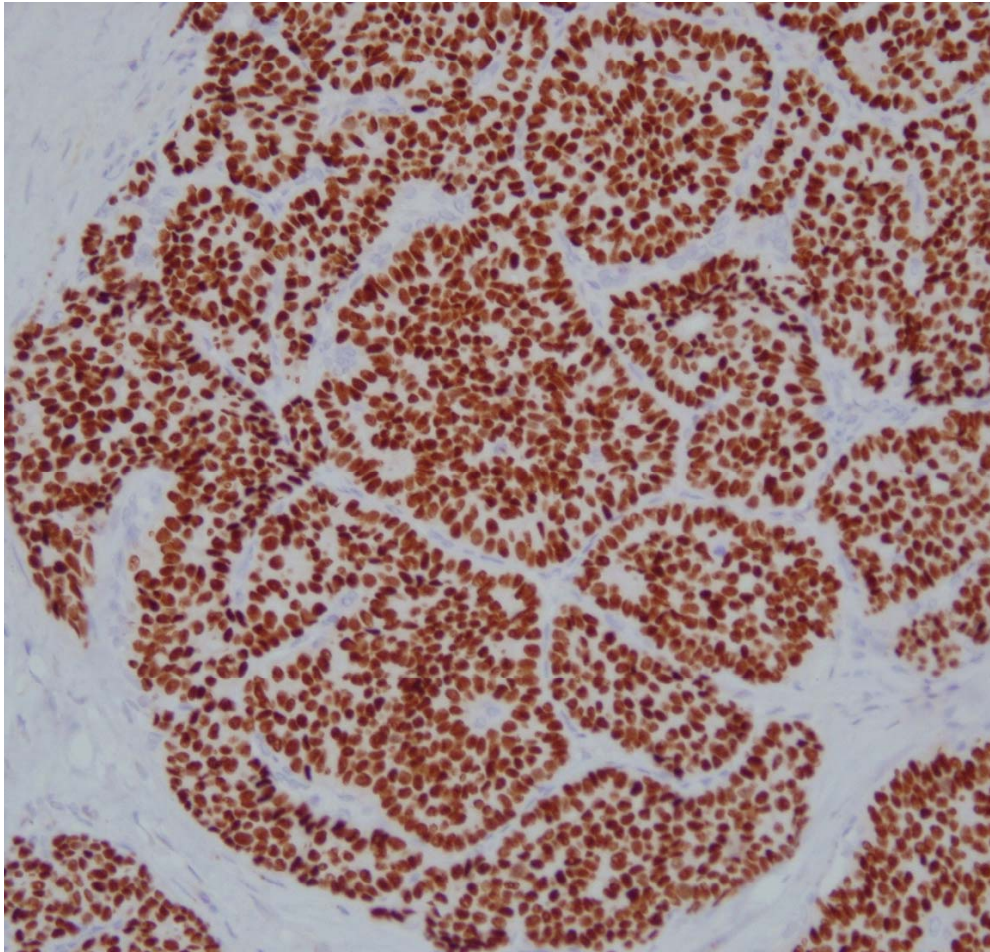
Synaptophysin



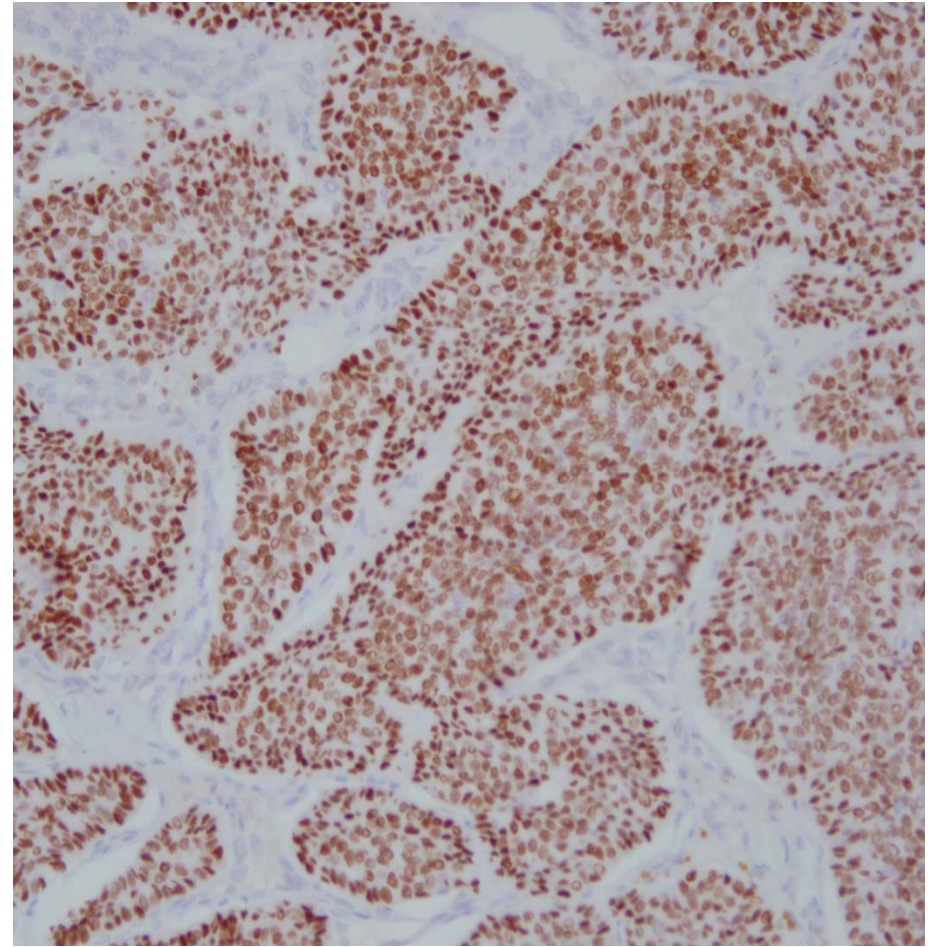
Synaptophysin



Estrogen receptor



Progesterone receptor



- Invasive carcinoma with solid-papillary and ductal features, grade 1, 75 mm, with focal neuroendocrine differentiation.

Learning points

- Recognition of invasive papillary carcinoma - parts that are invasive versus in-situ.
- Absence of myoepithelial cells.
- Measurement of invasive component.
- Subtyping of the invasive cancer - papillary vs ductal vs neuroendocrine.