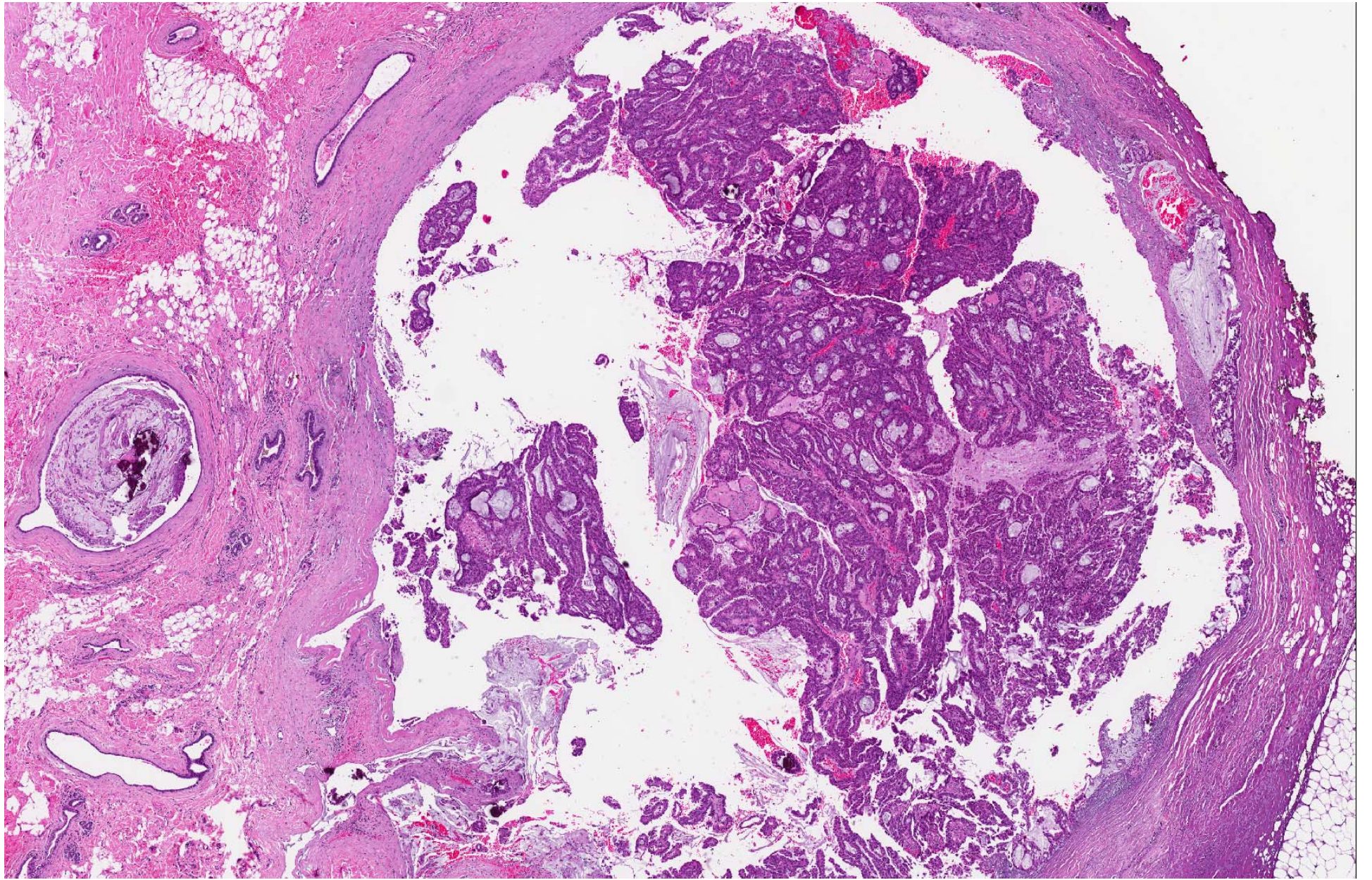
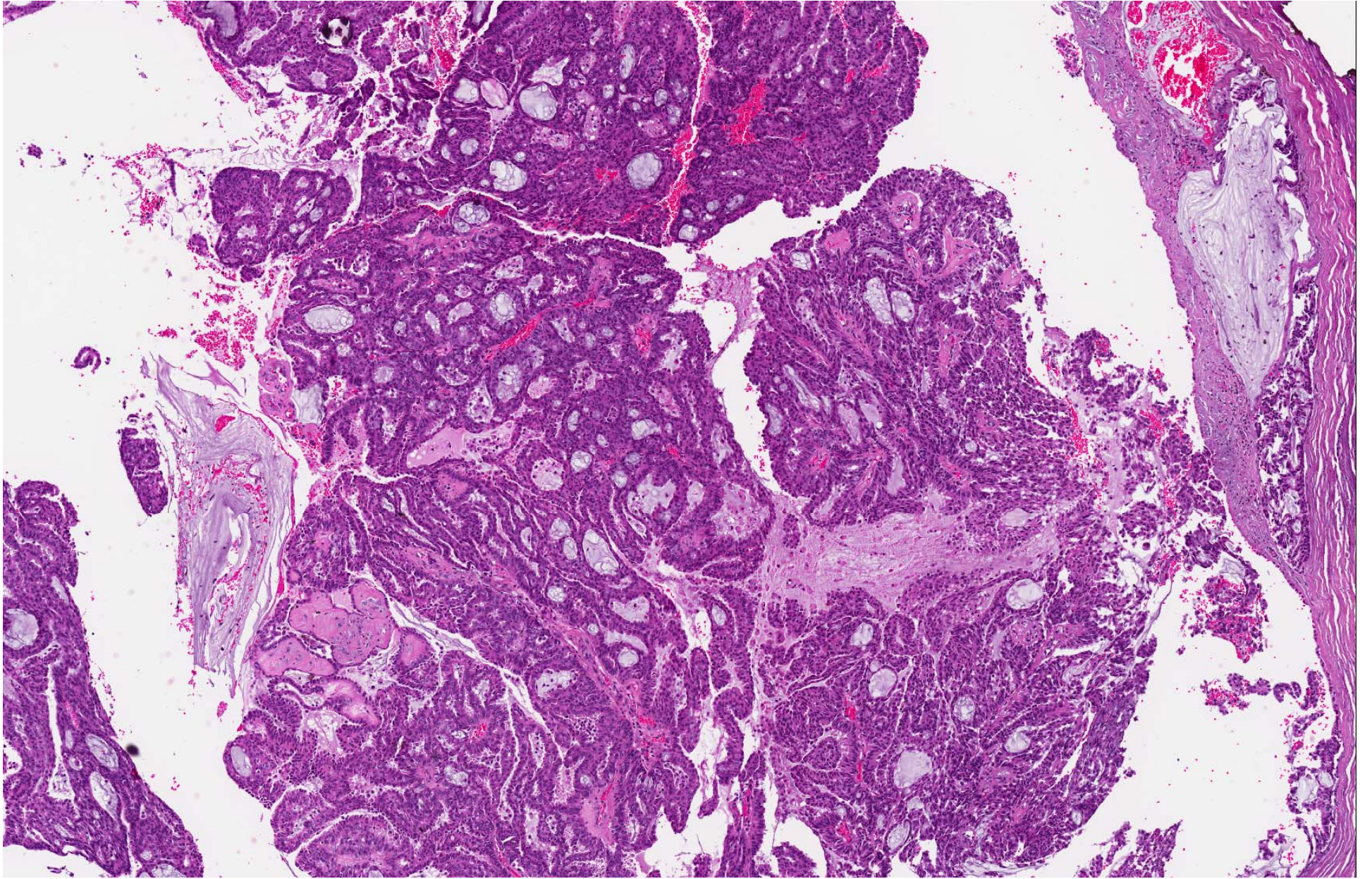
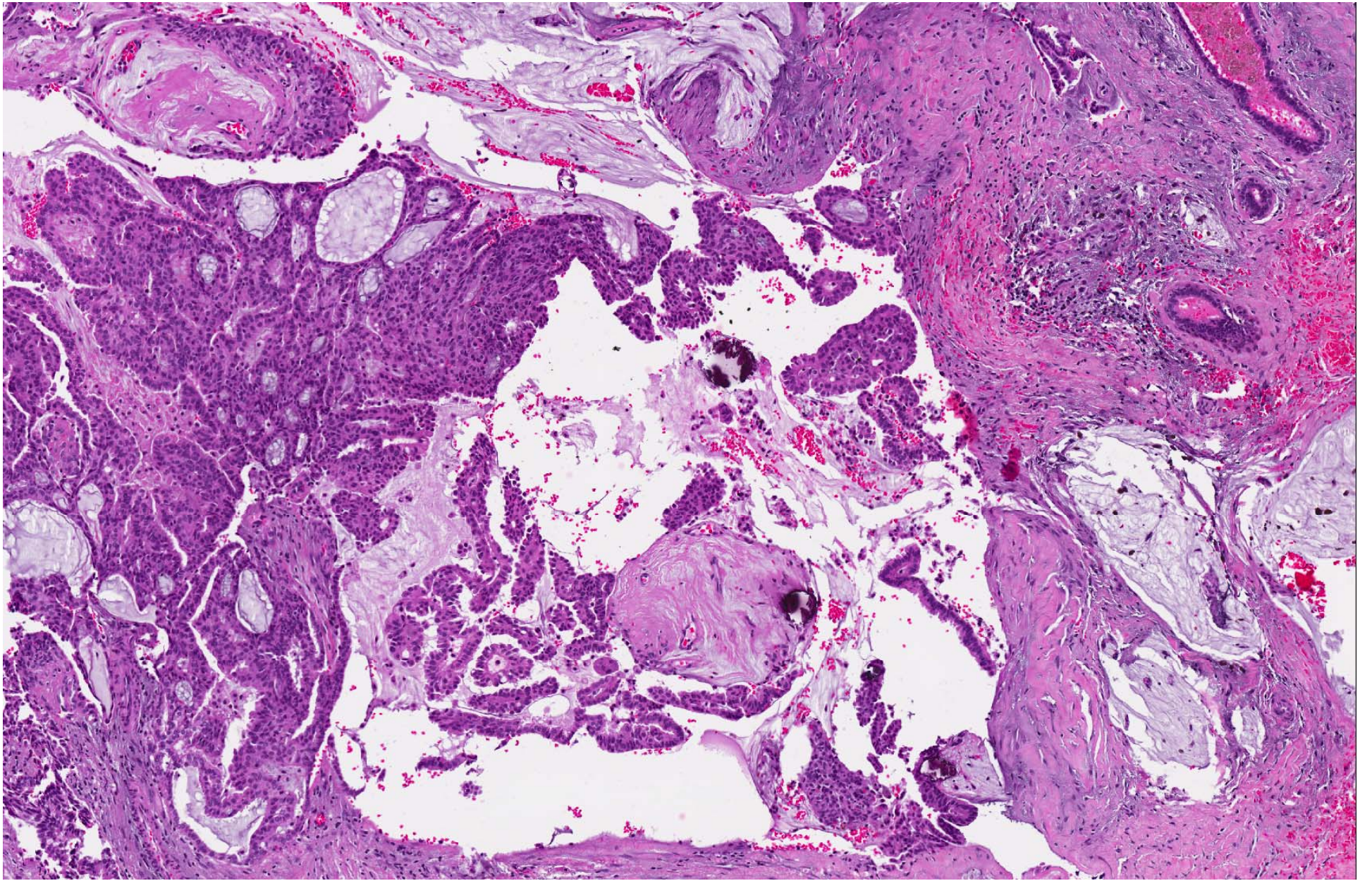
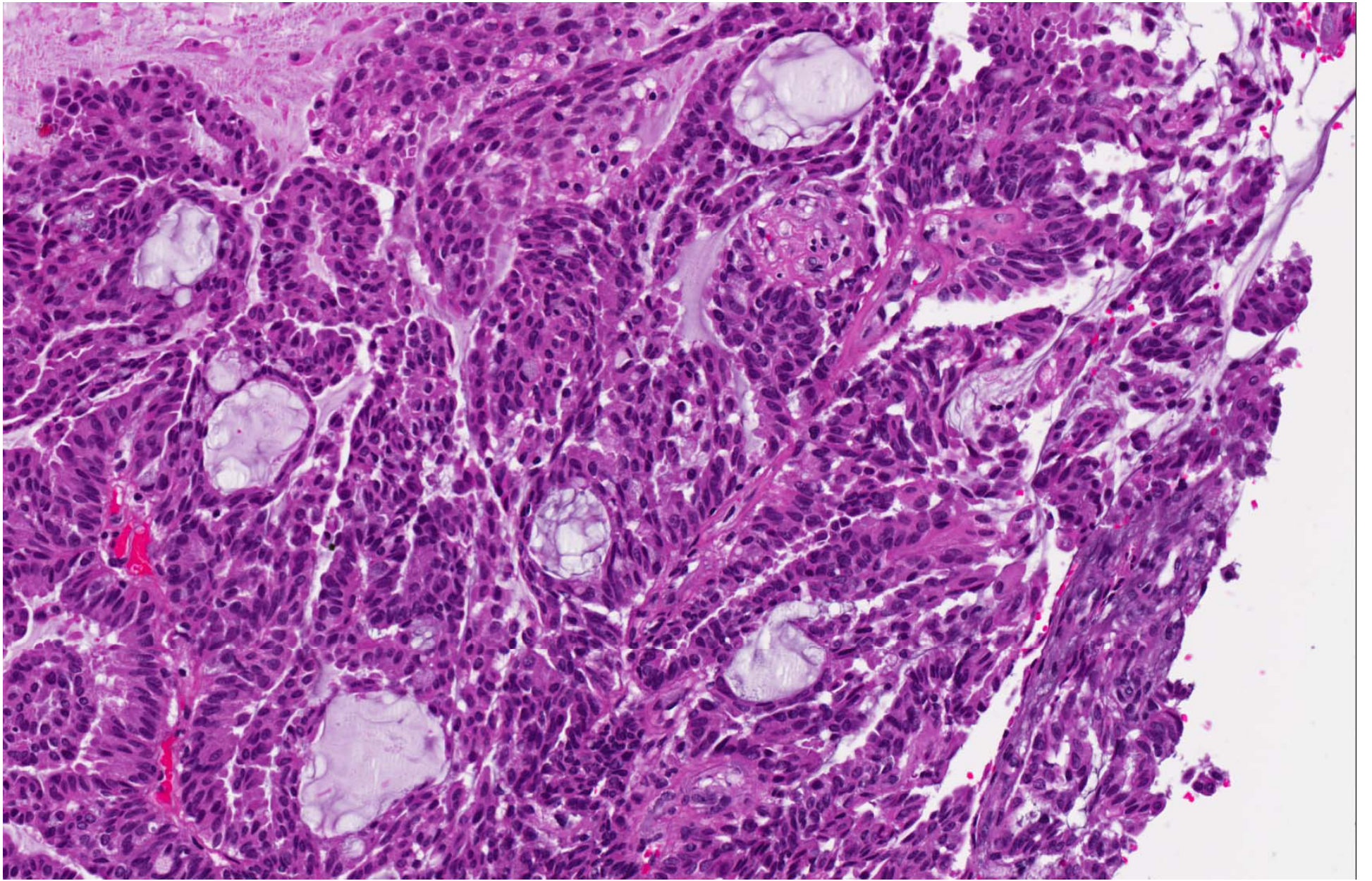


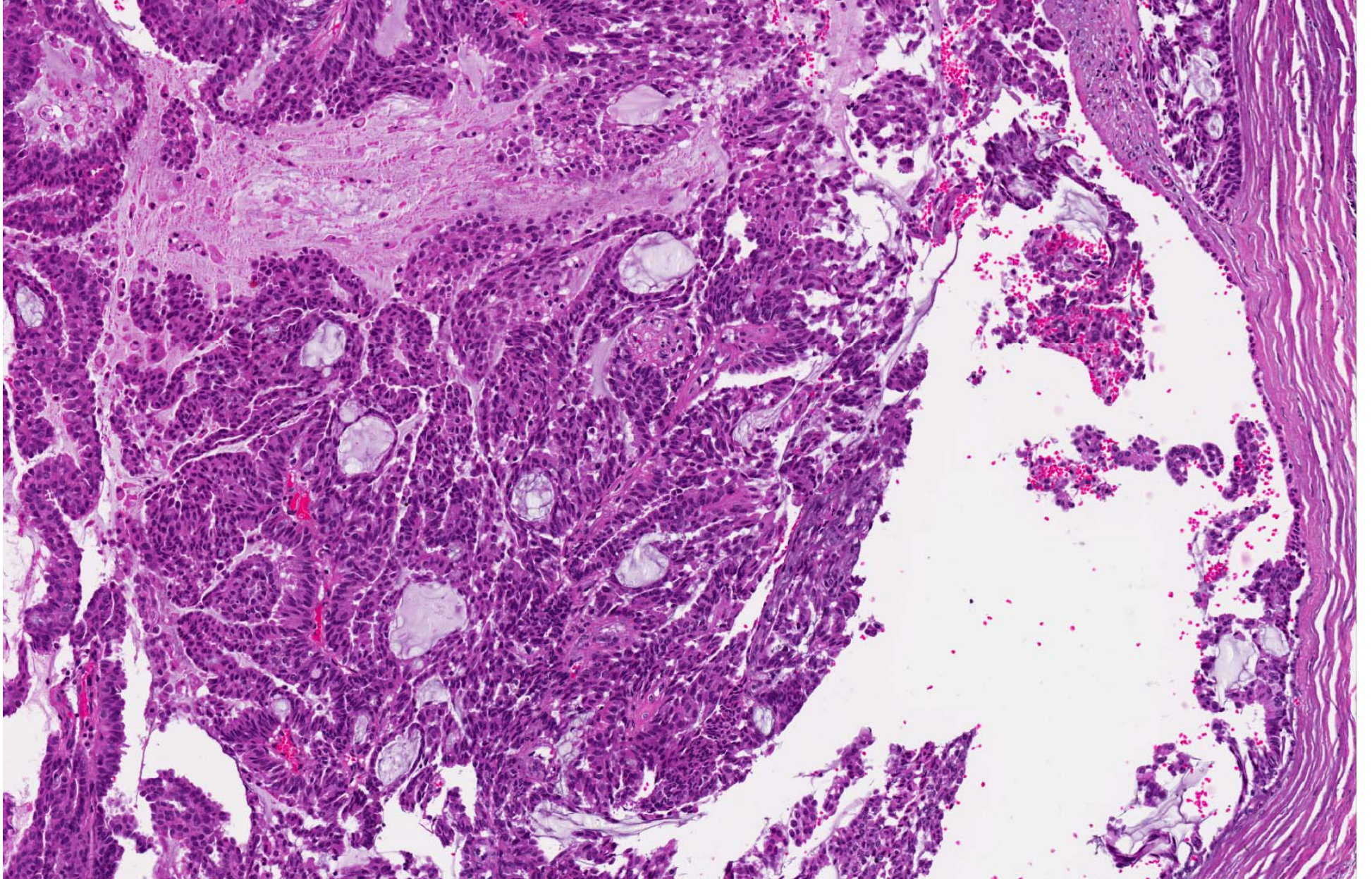
- Set A.15
- 20 year old female with a left breast lump. Excision specimen showed breast tissue containing a haemorrhagic cystic nodule measuring about 0.6cm in diameter.

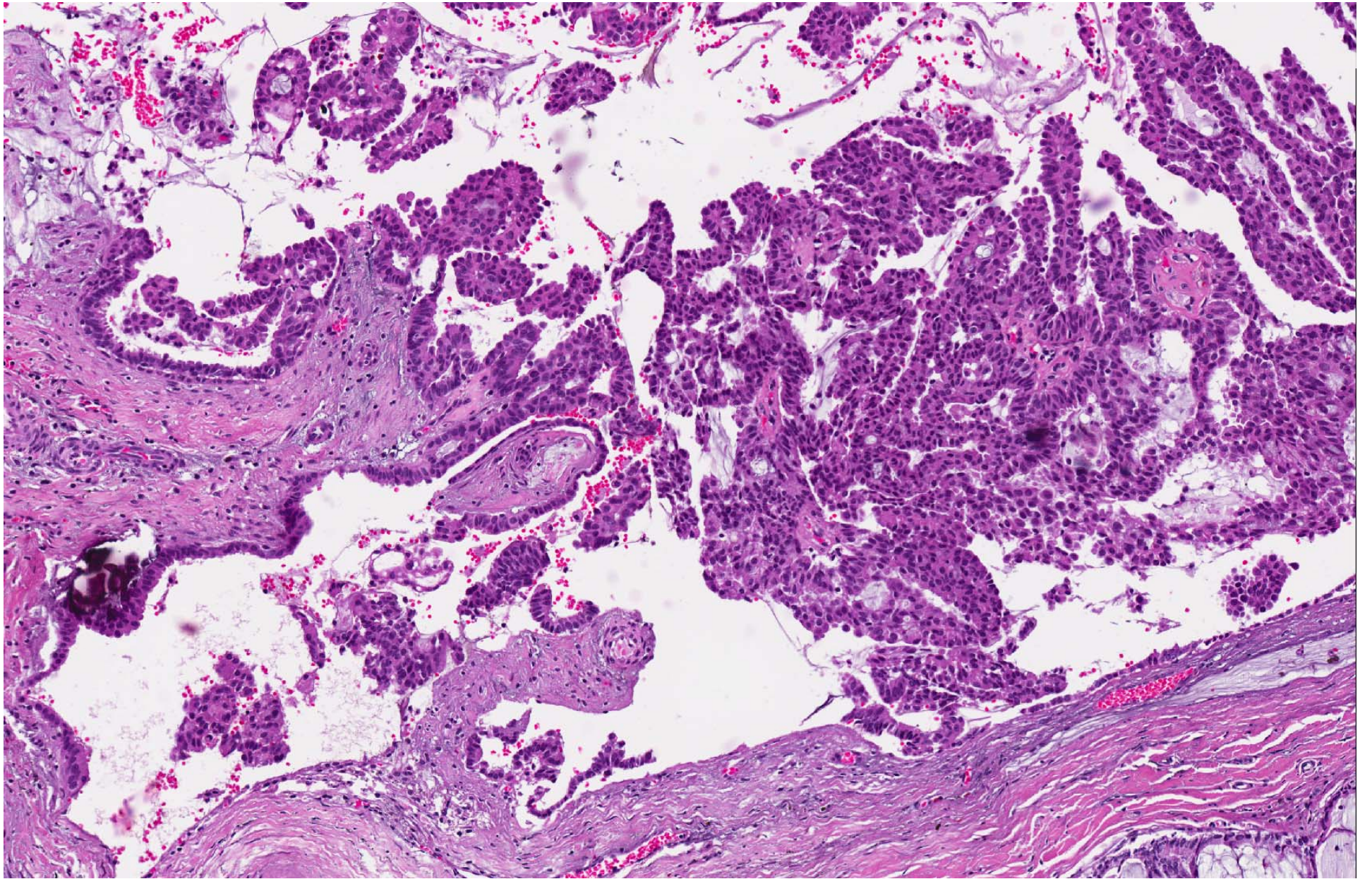


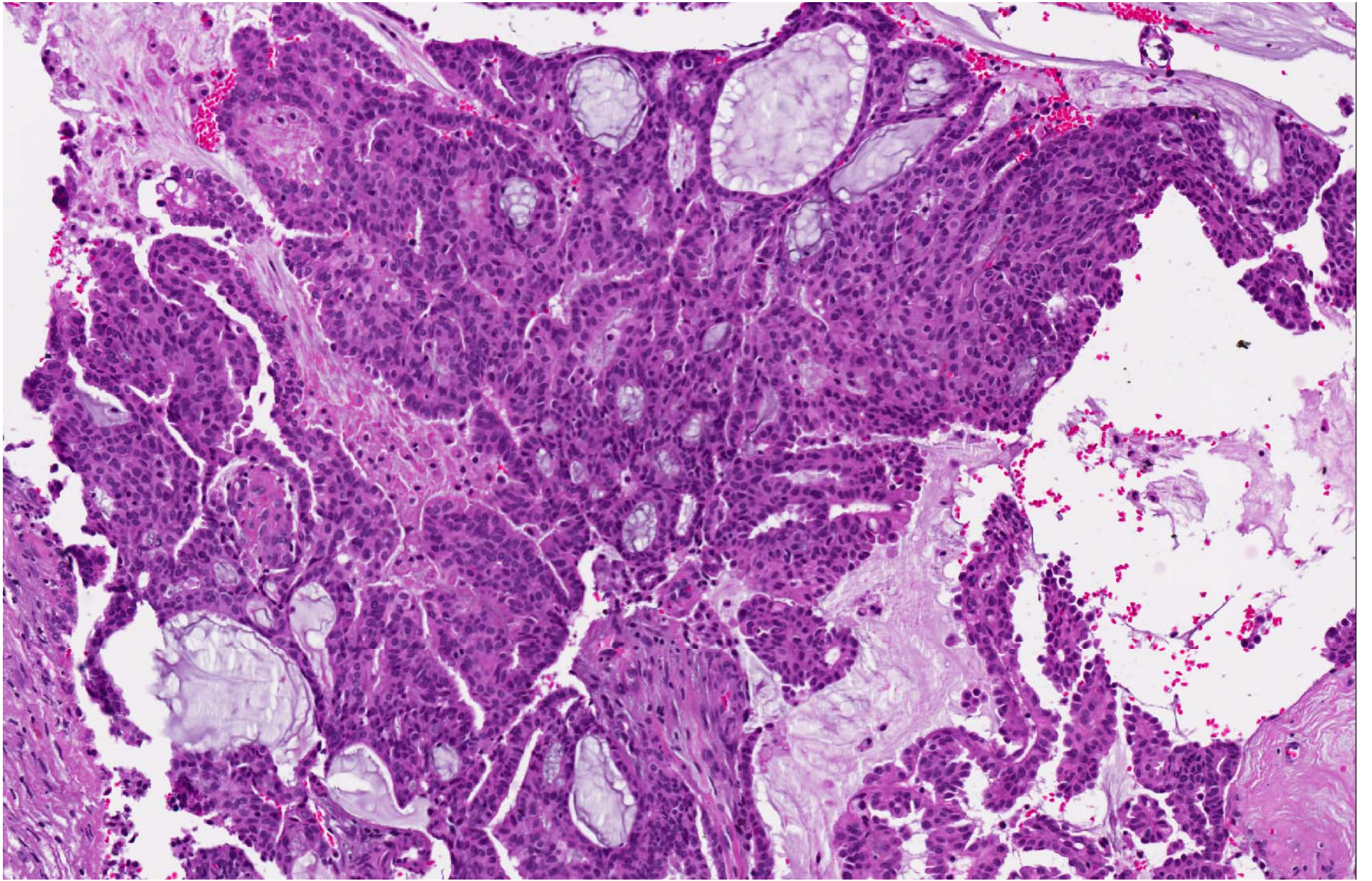




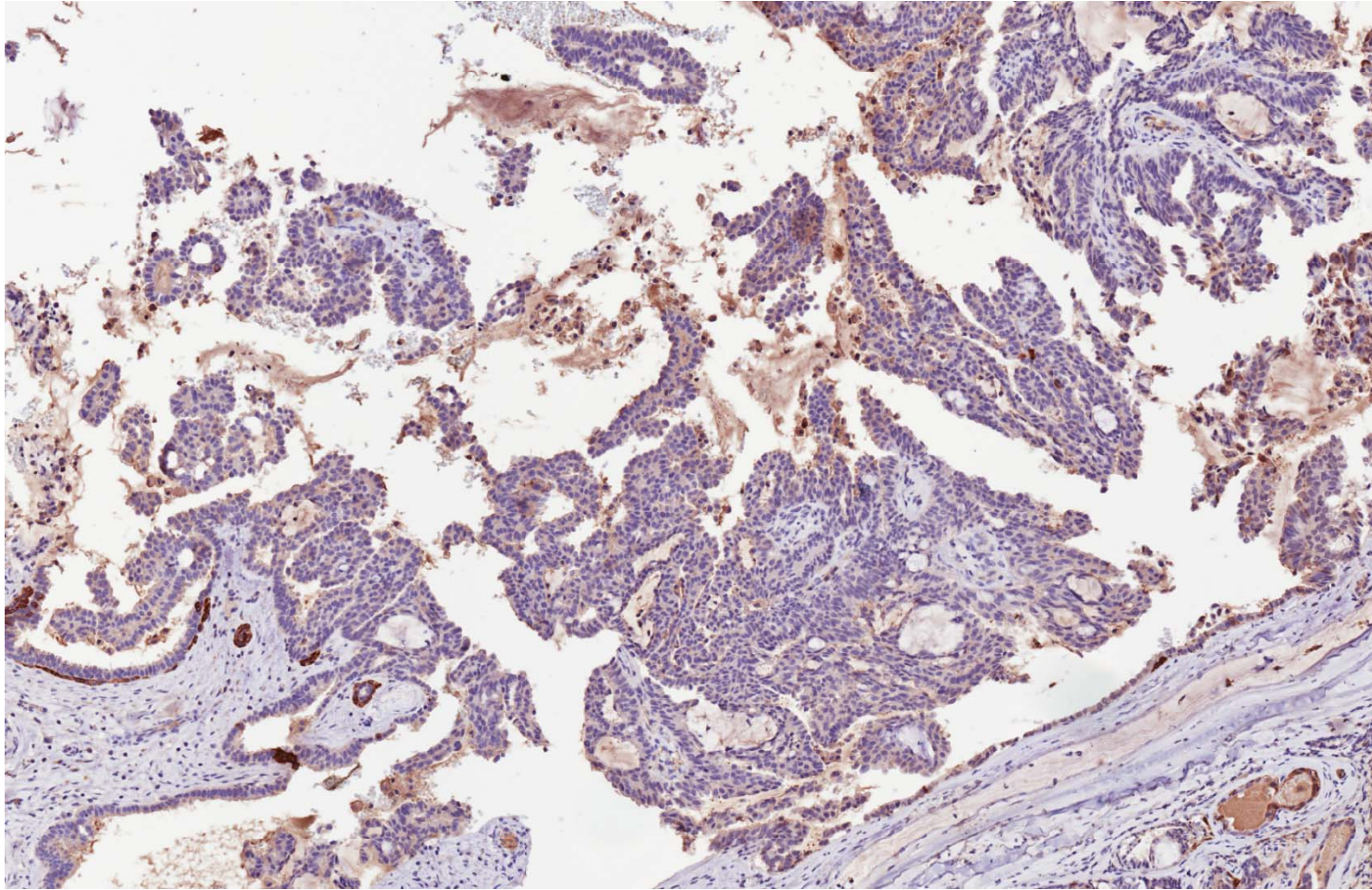




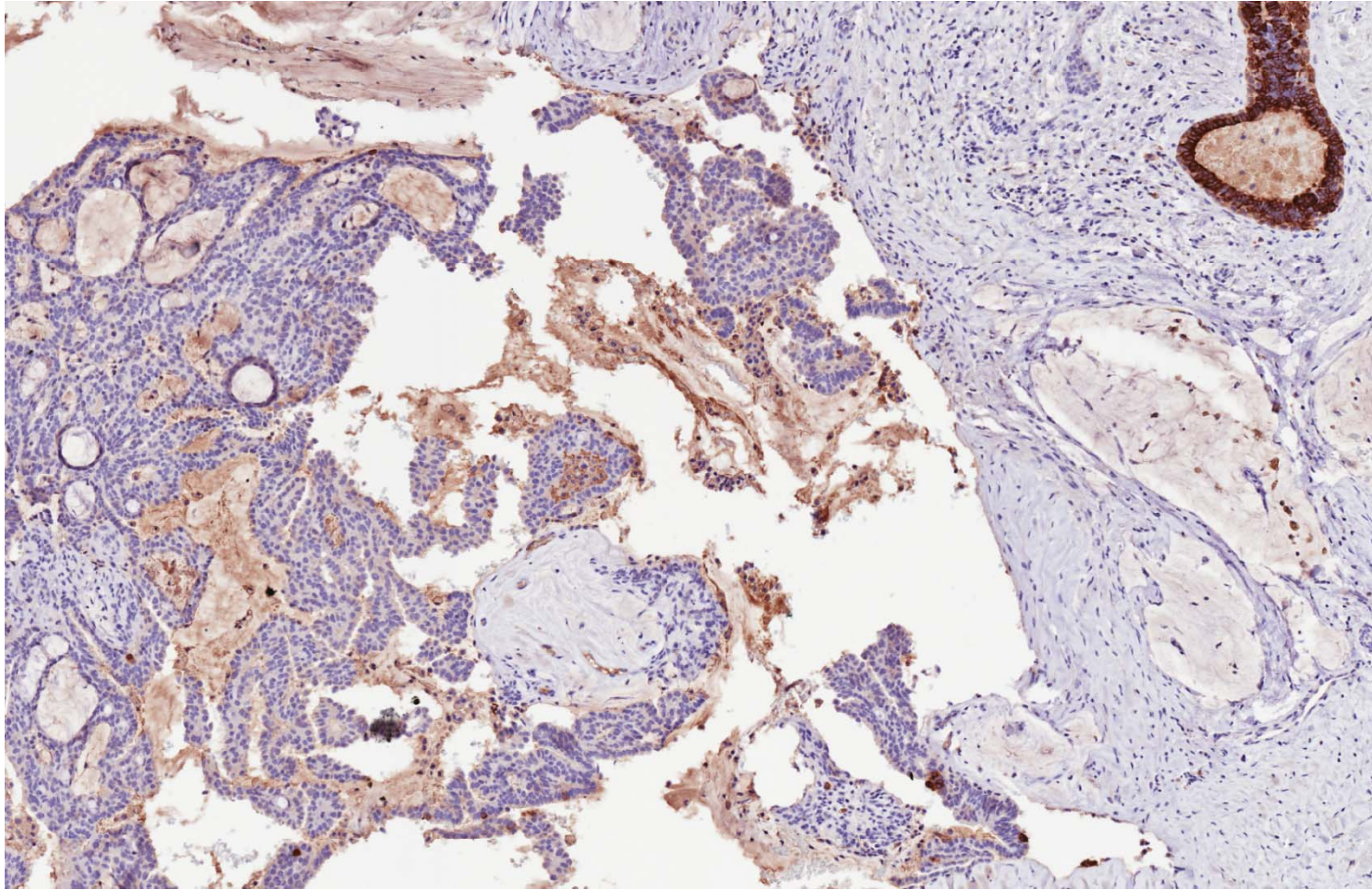




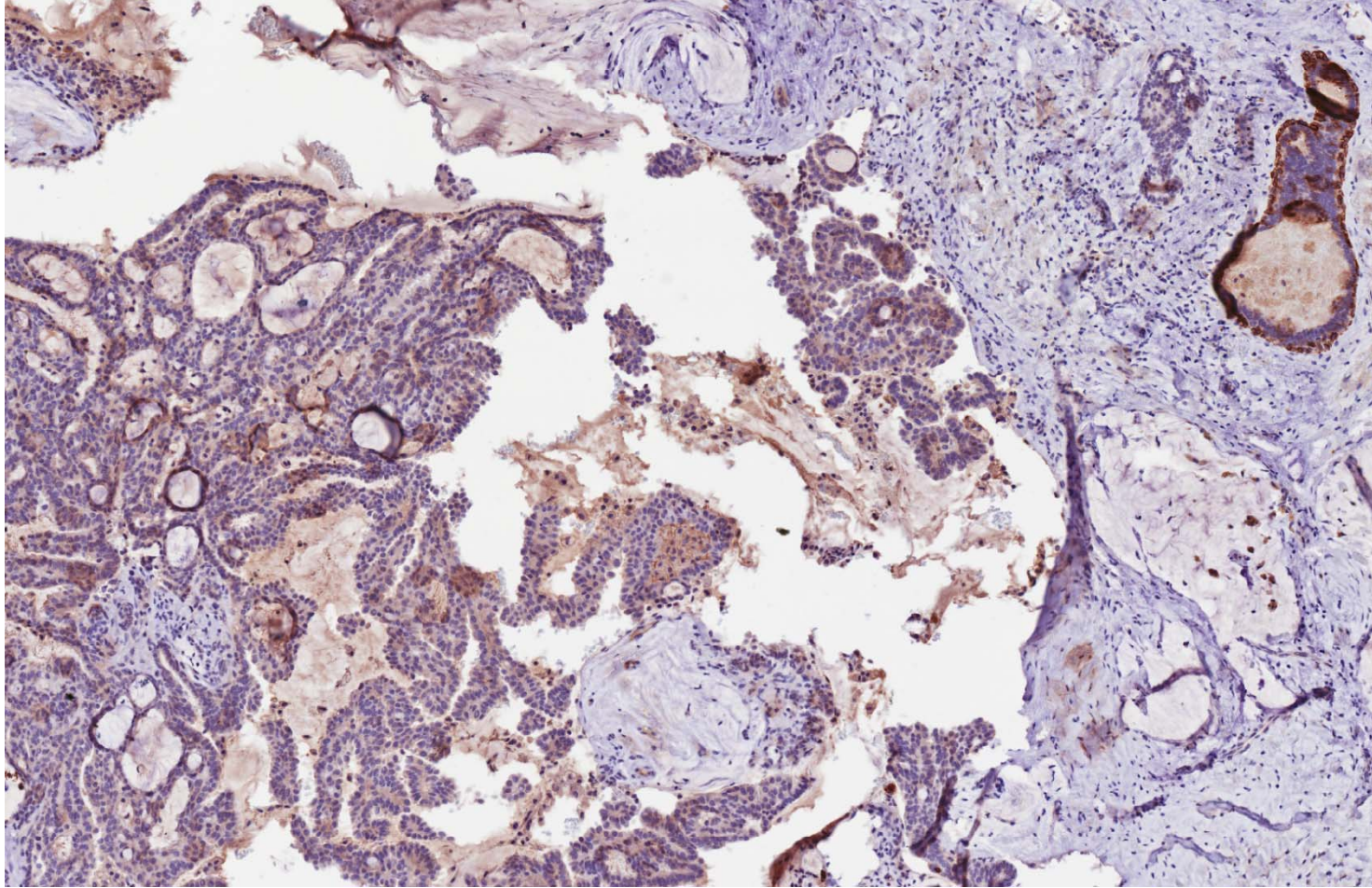
CK5/6



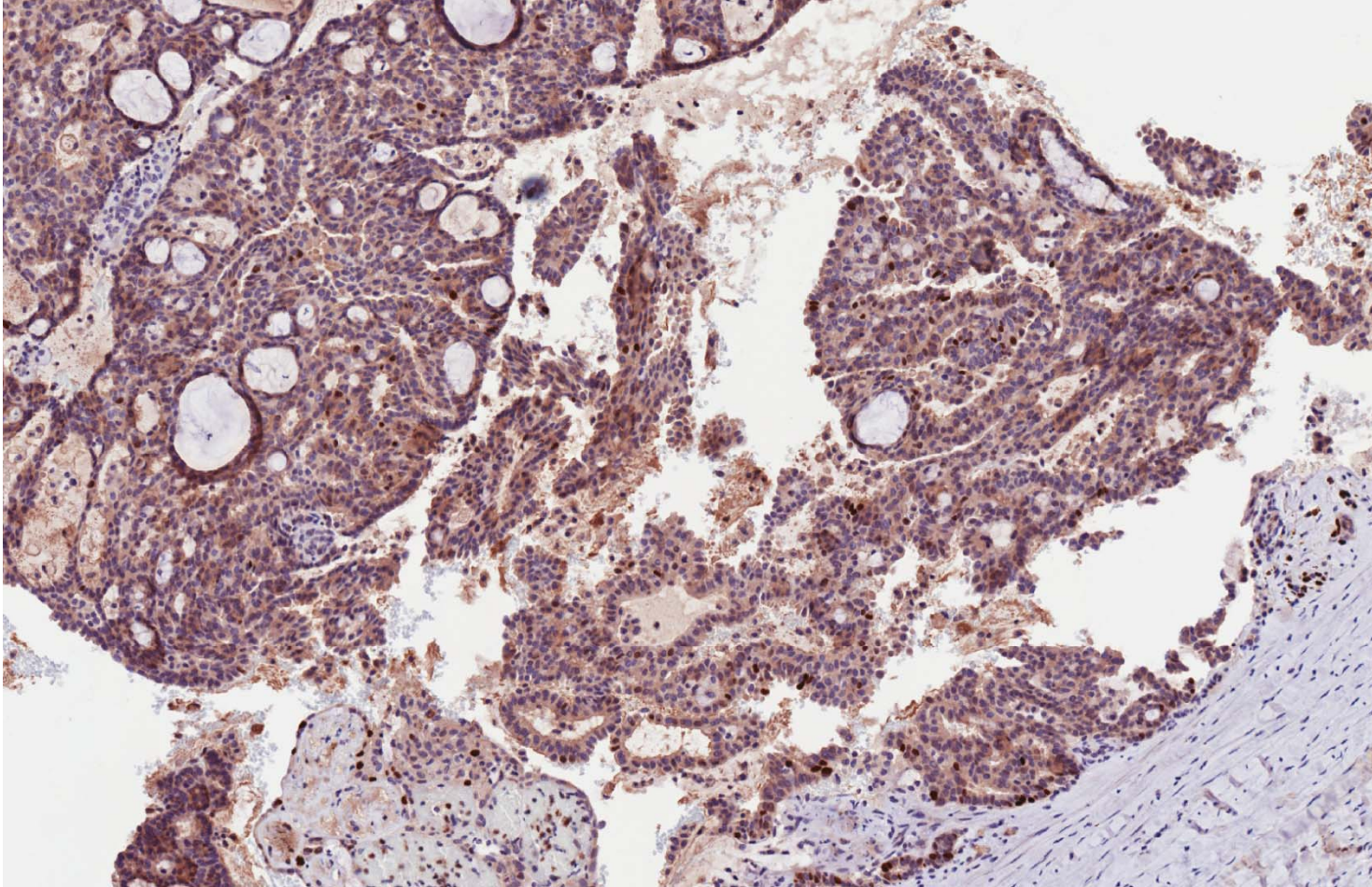
CK5/6



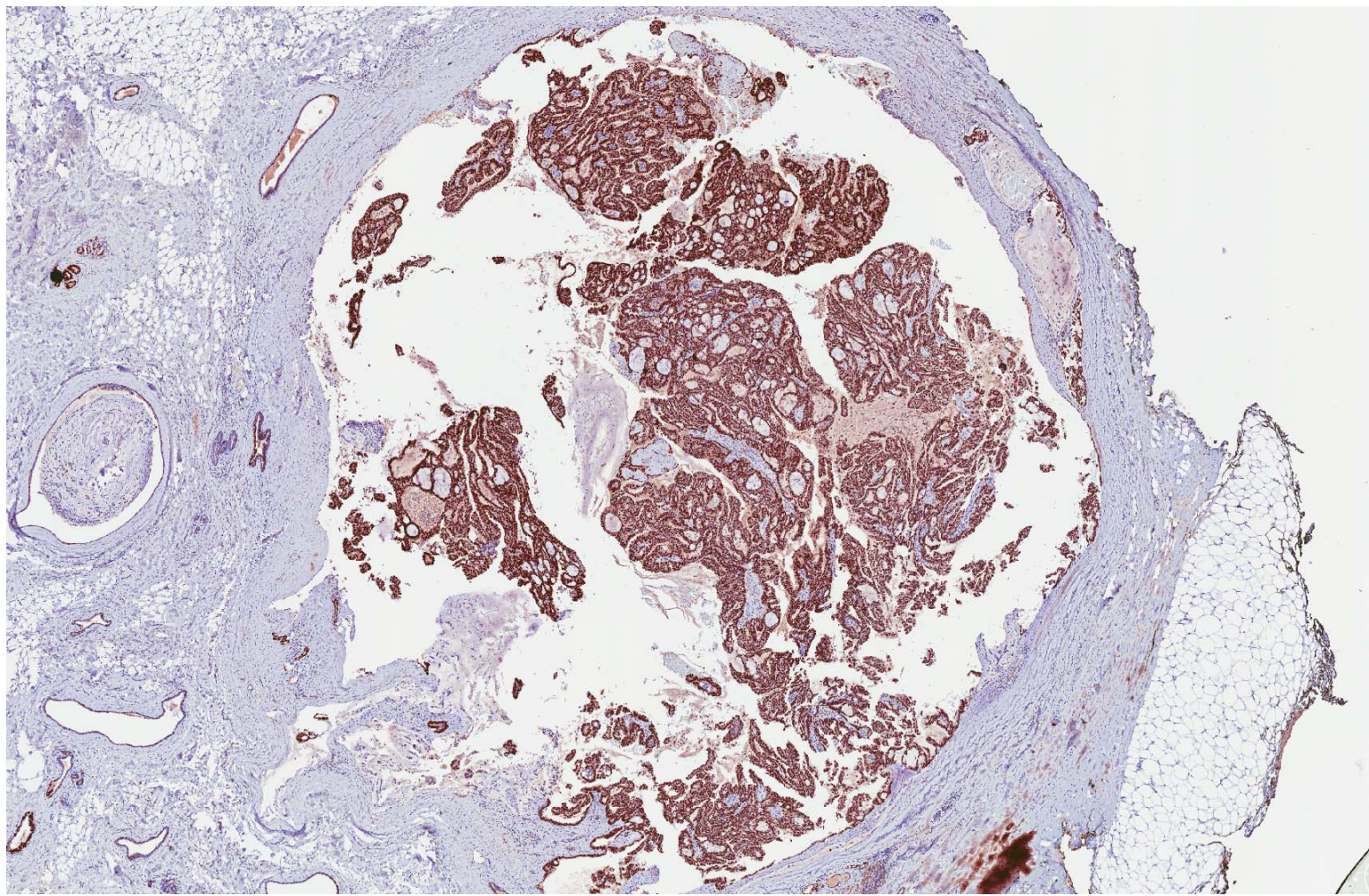
CK14



p63



ER



- Intraductal papillary lesion with mucin and calcifications

- Papilloma vs atypical papilloma?
- p63 diminished, ER diffusely positive, CK5/6 and CK14 sparse.