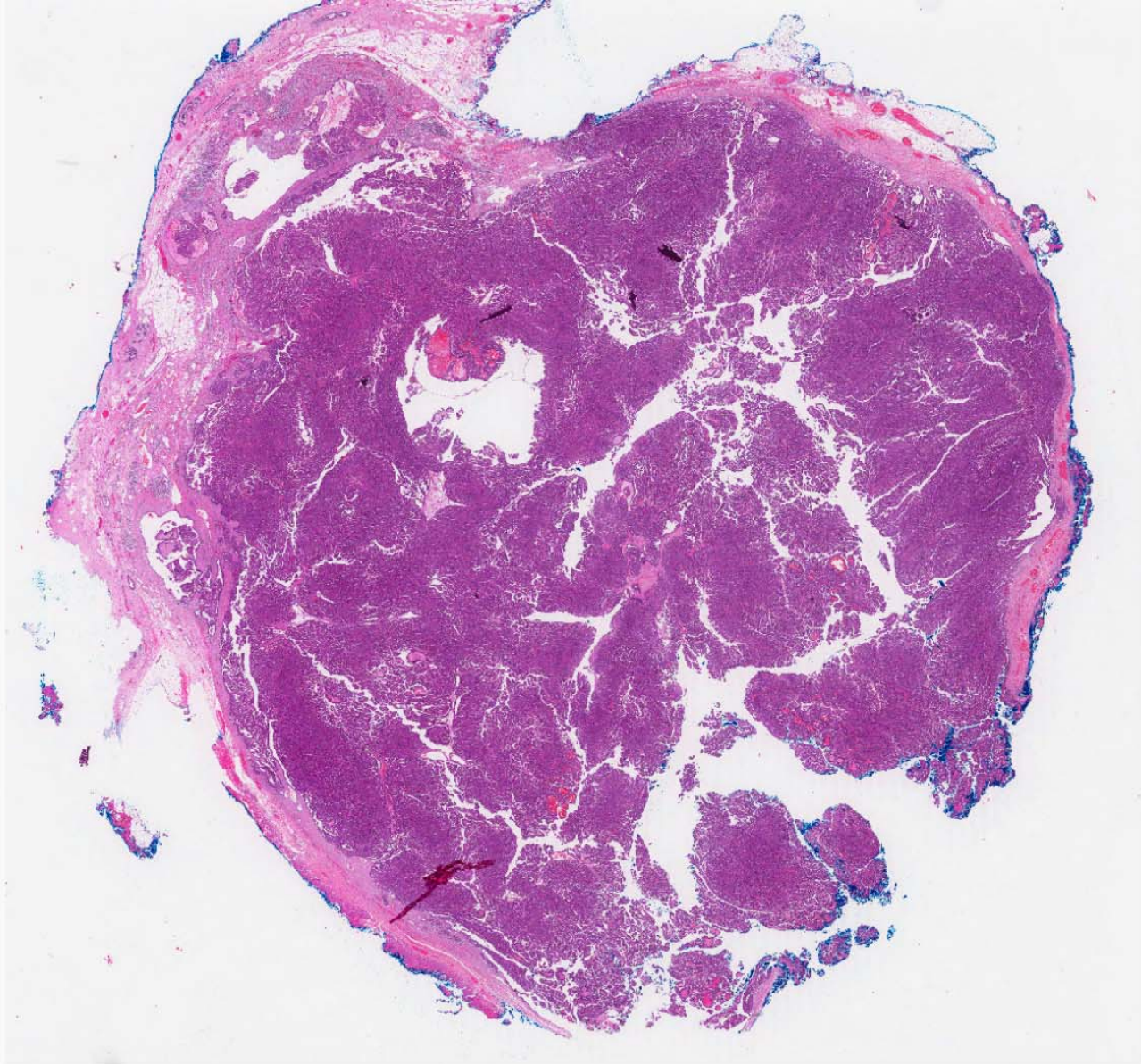
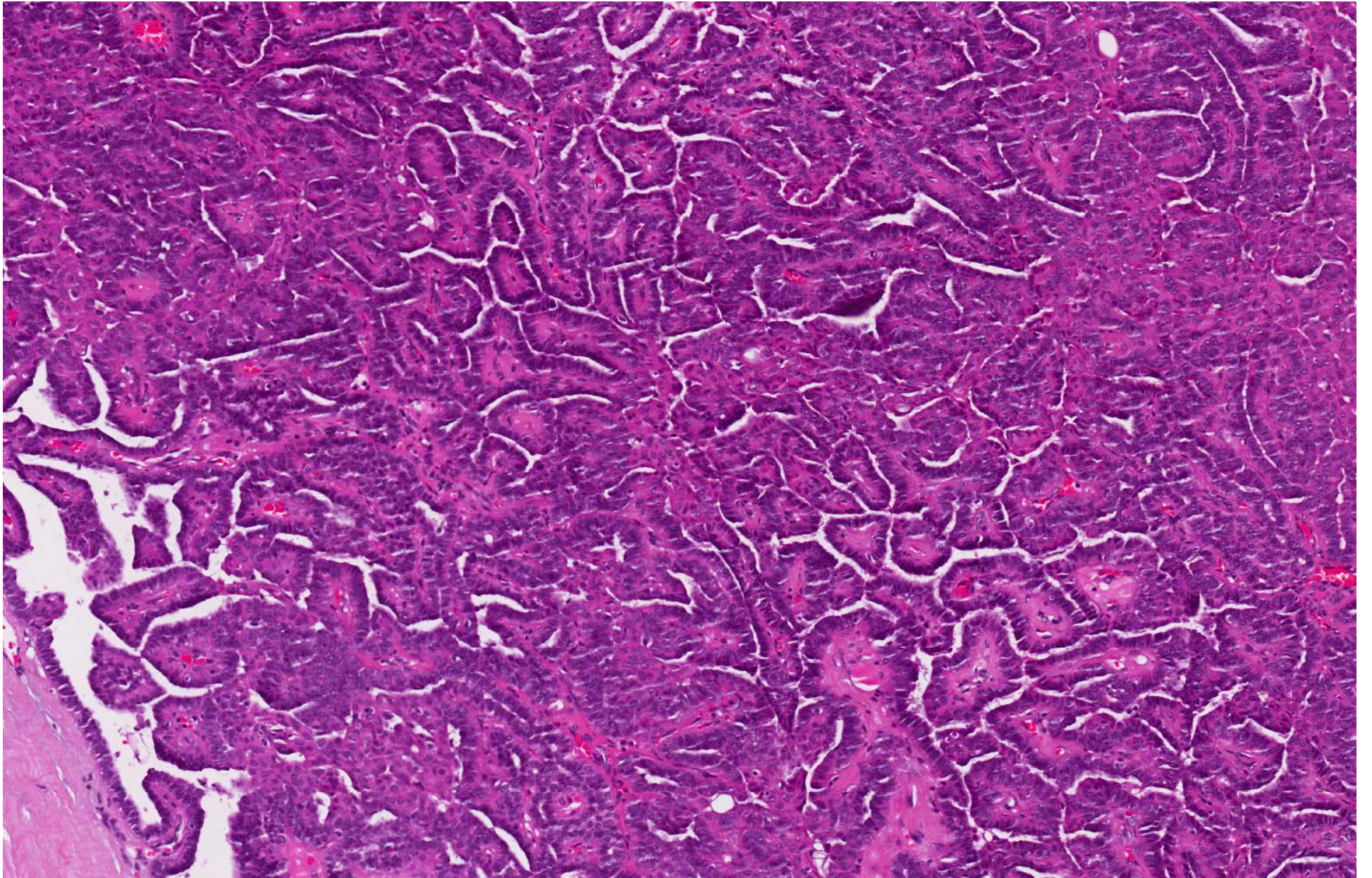
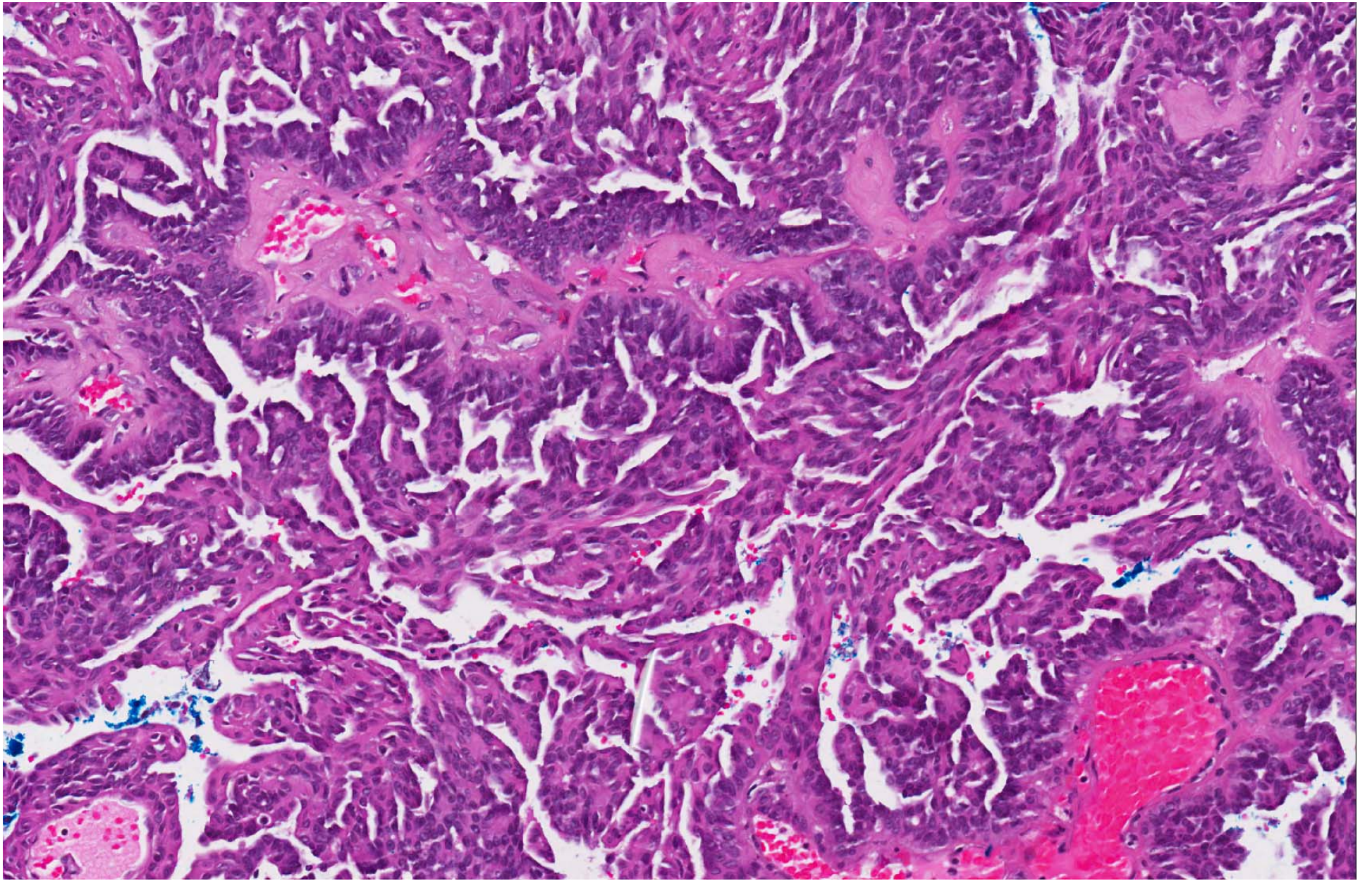
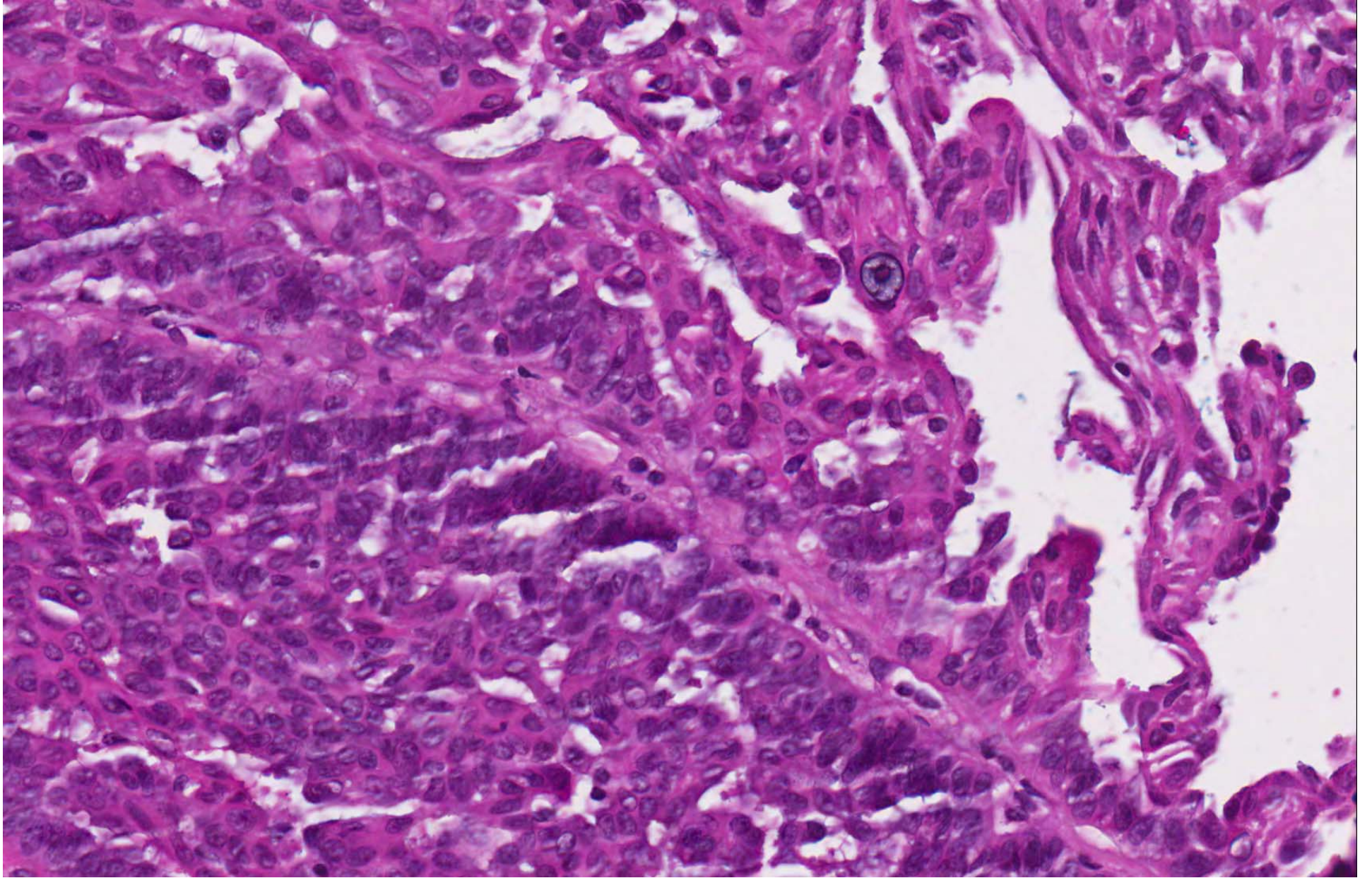


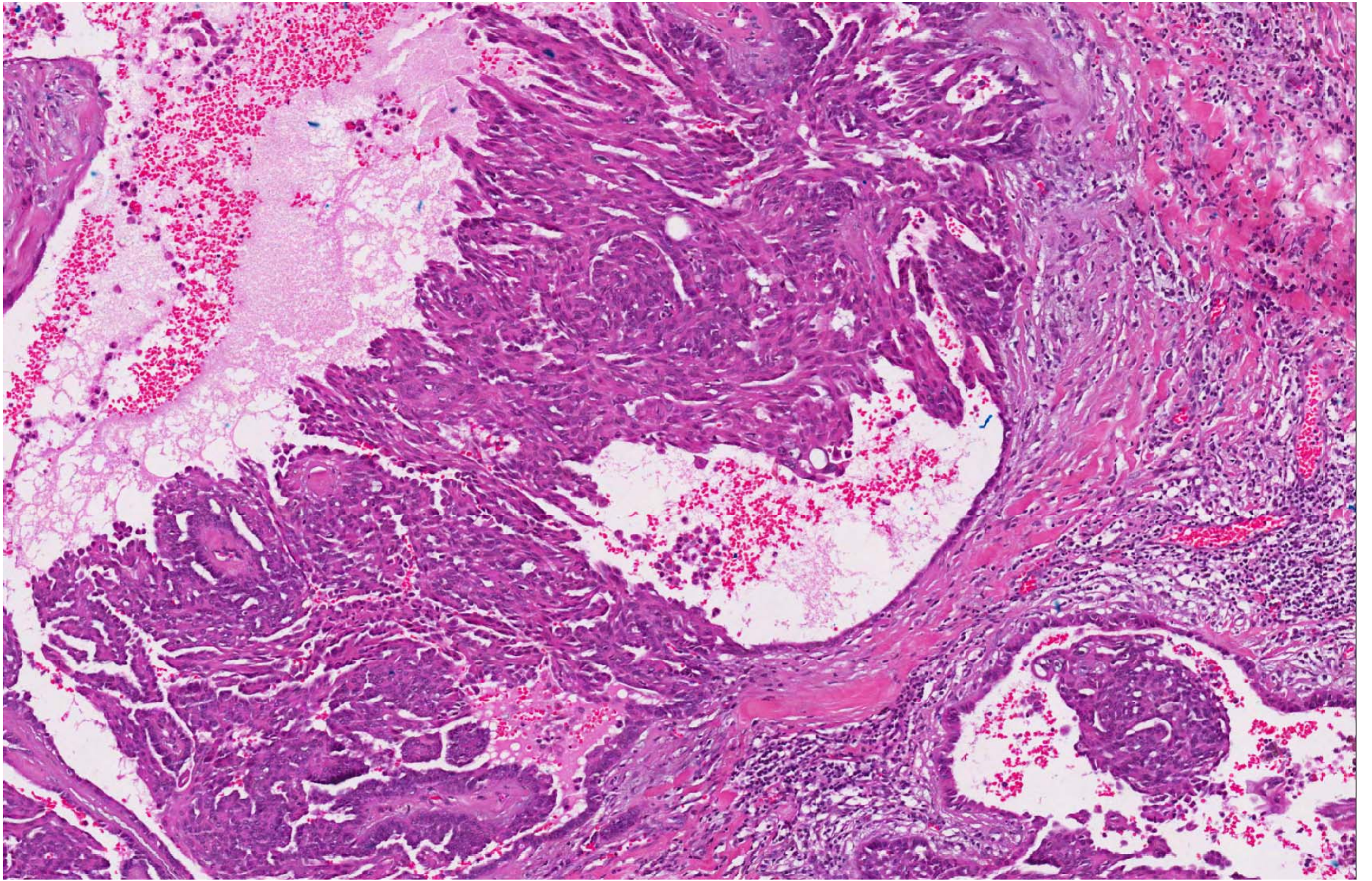
- Set A.14
- 52 year old Chinese female underwent excision biopsy of a right breast lump.

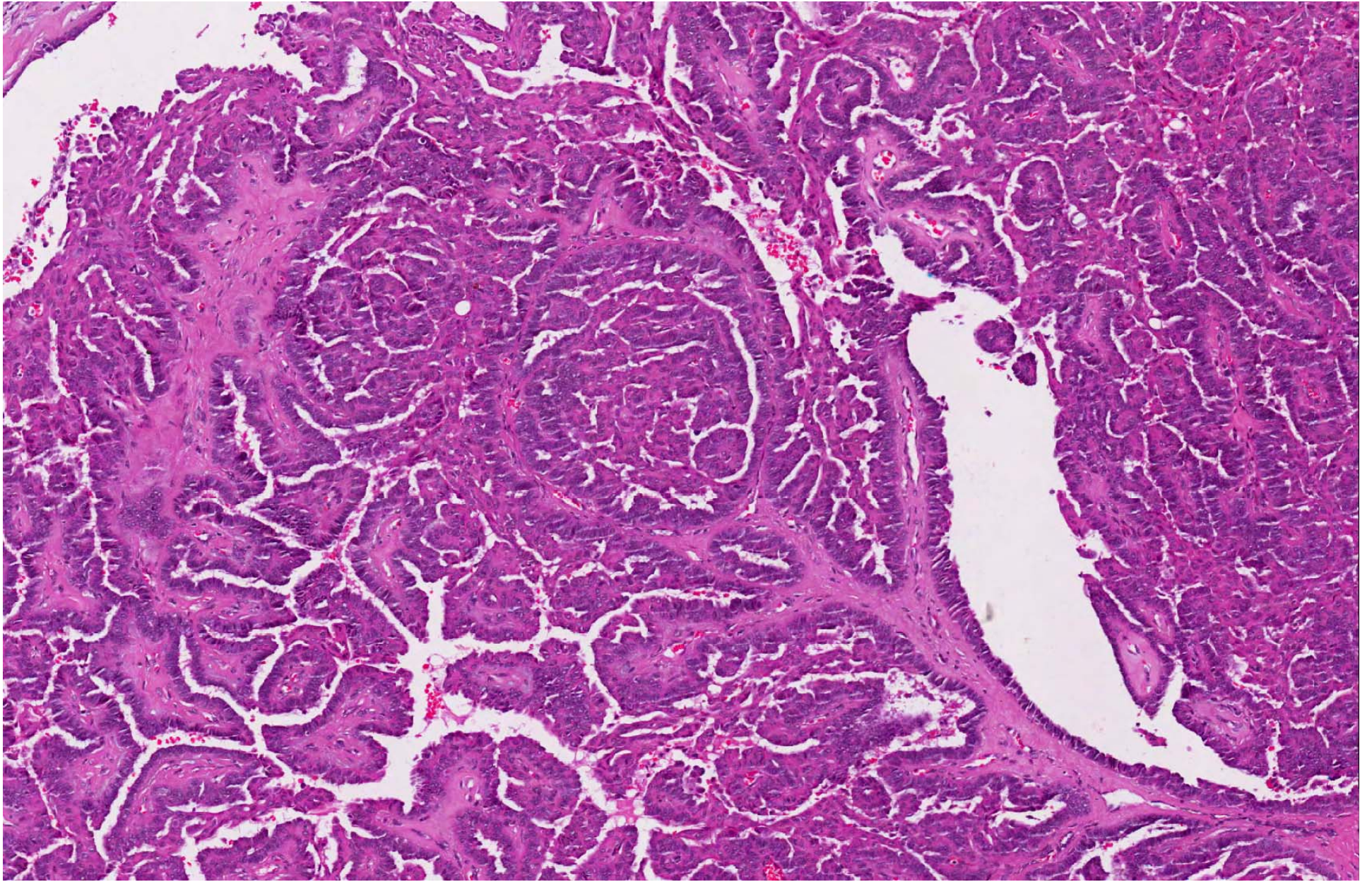


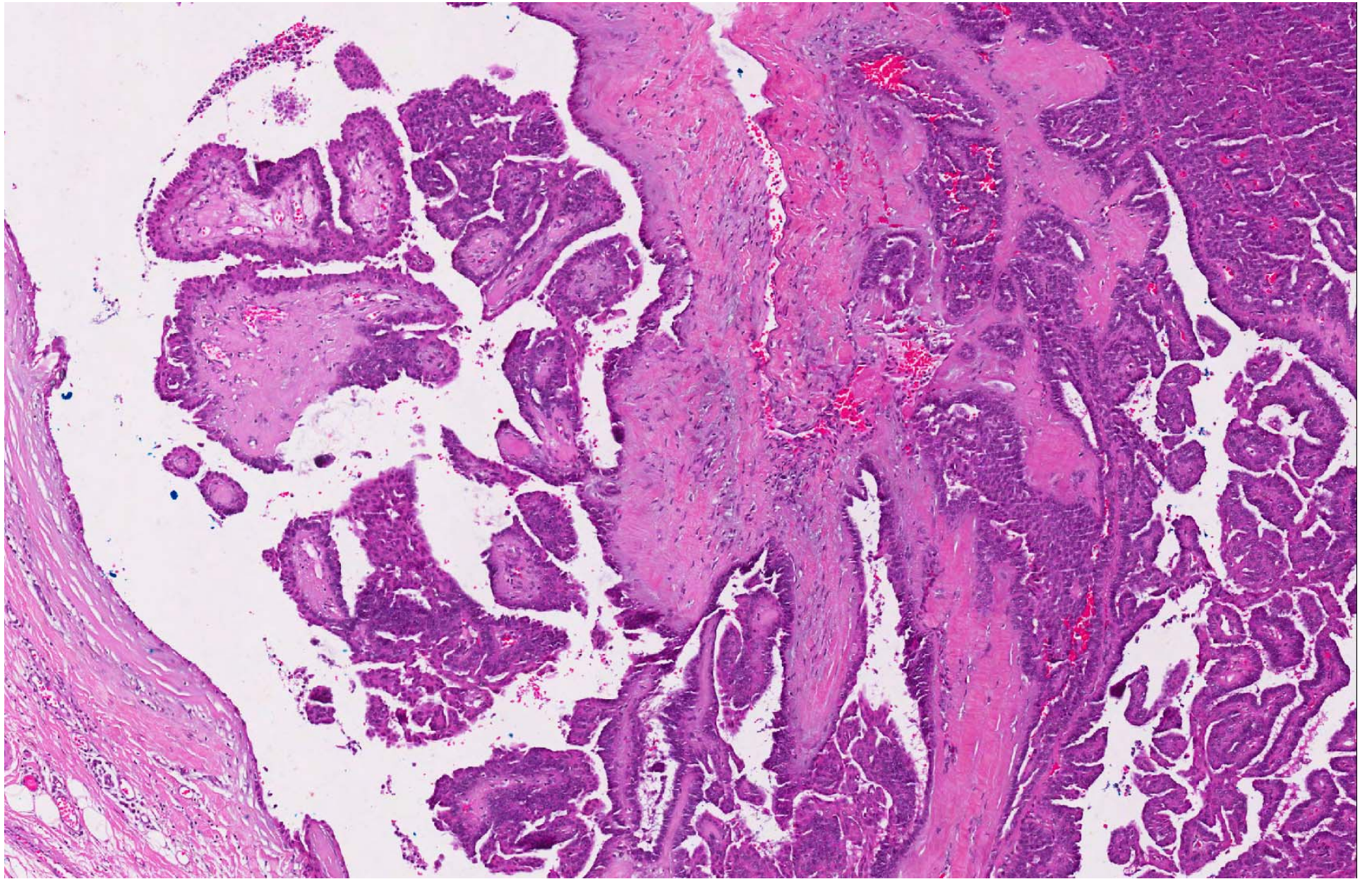


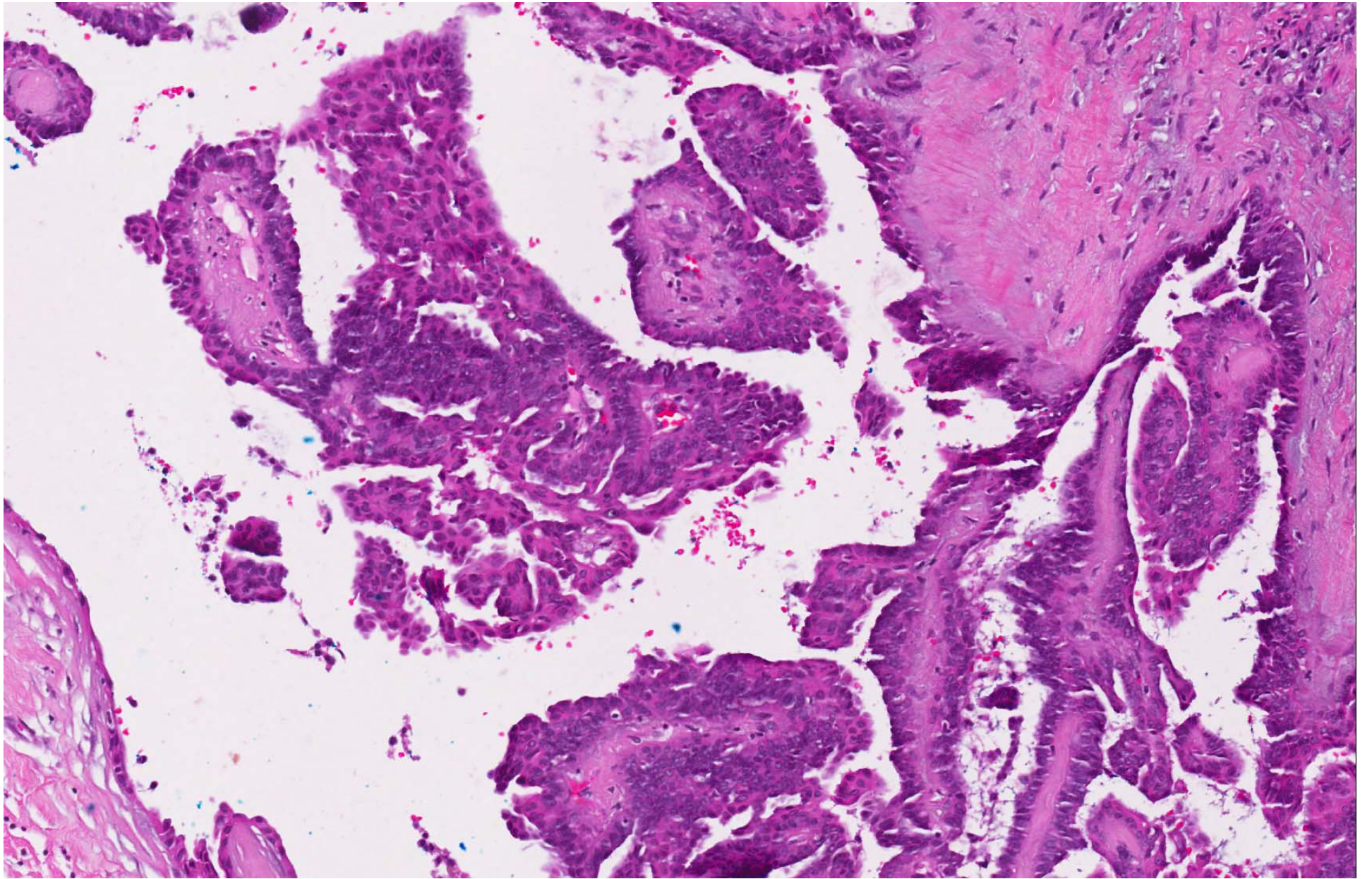


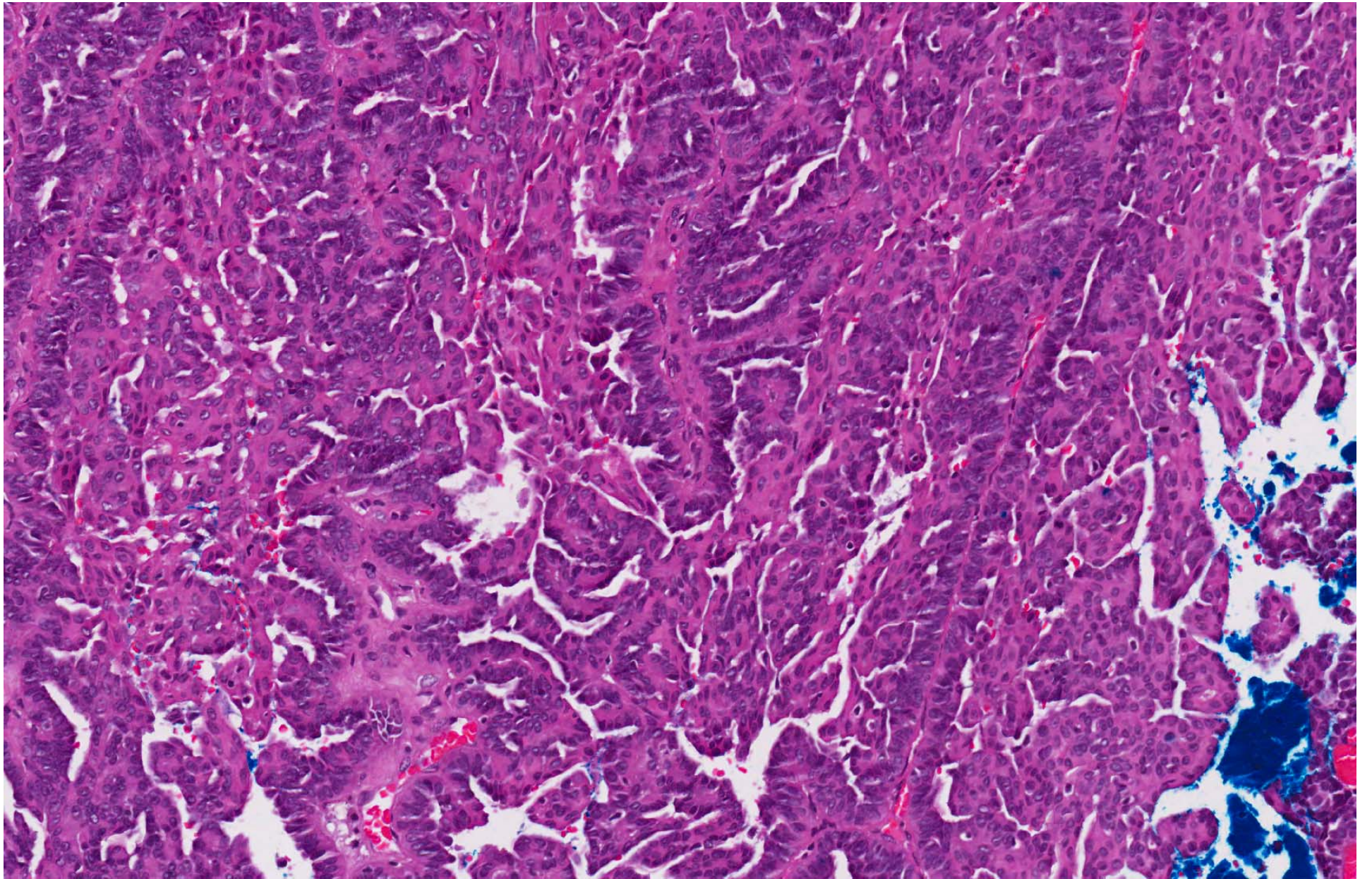


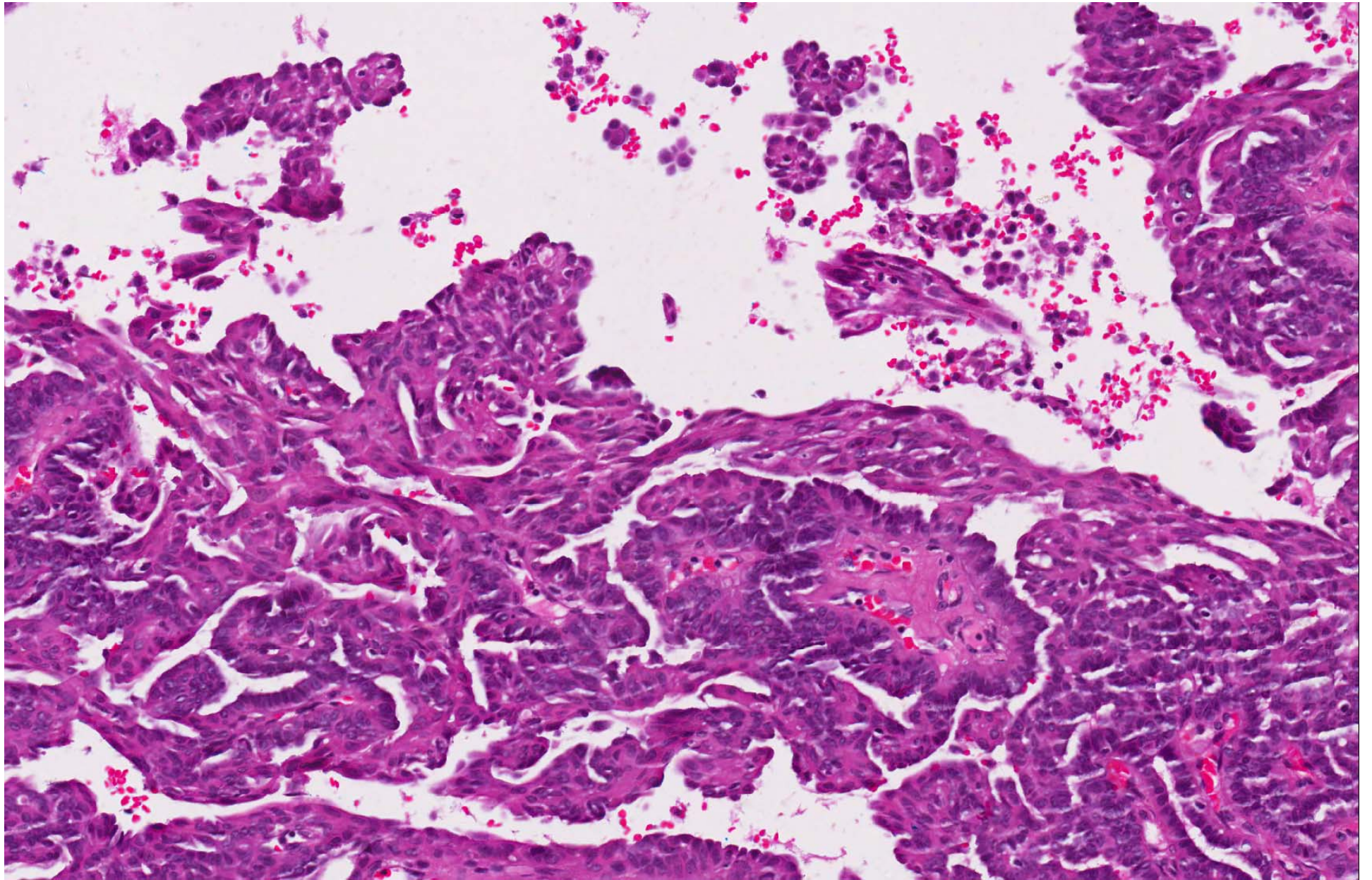


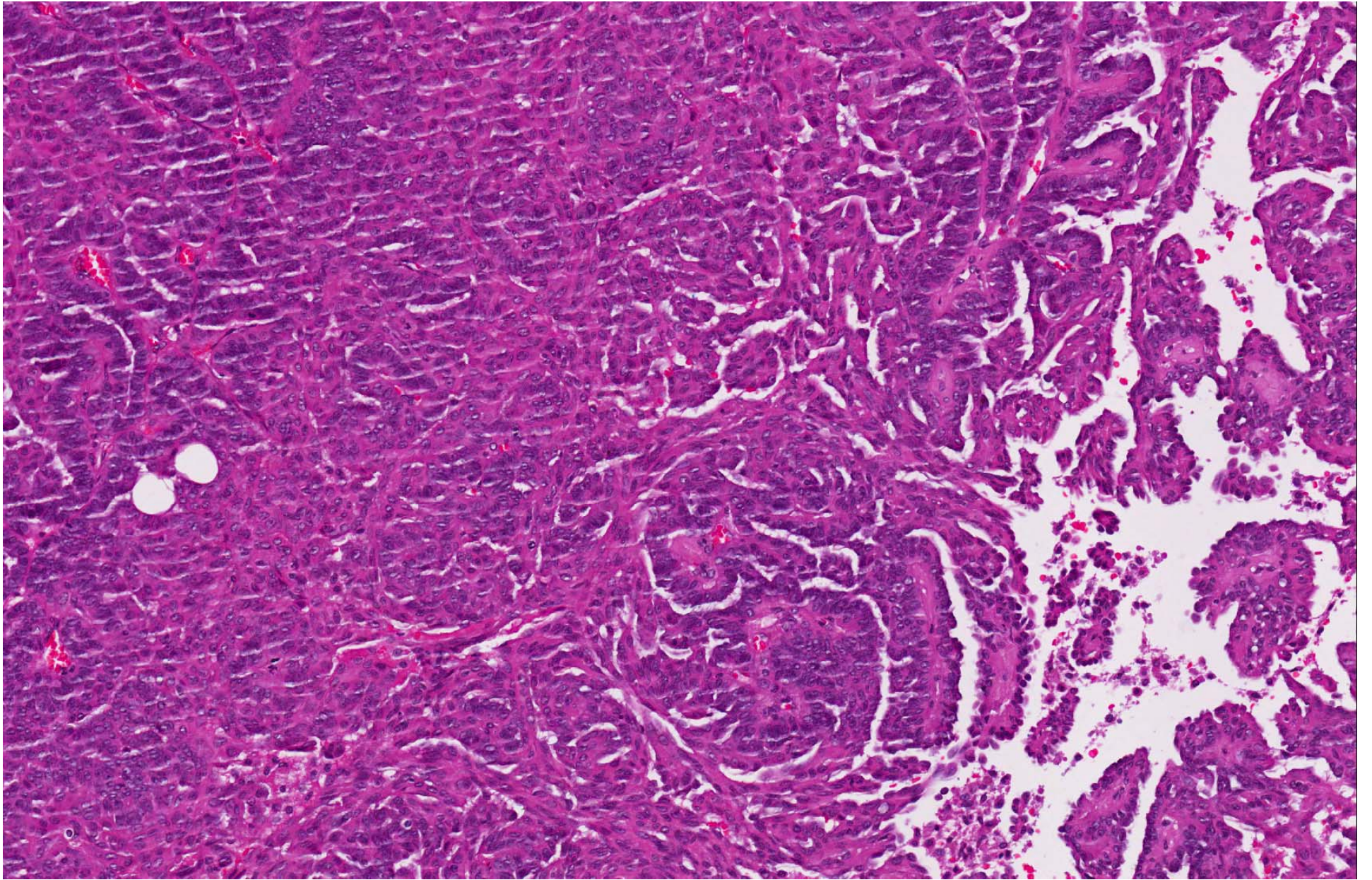




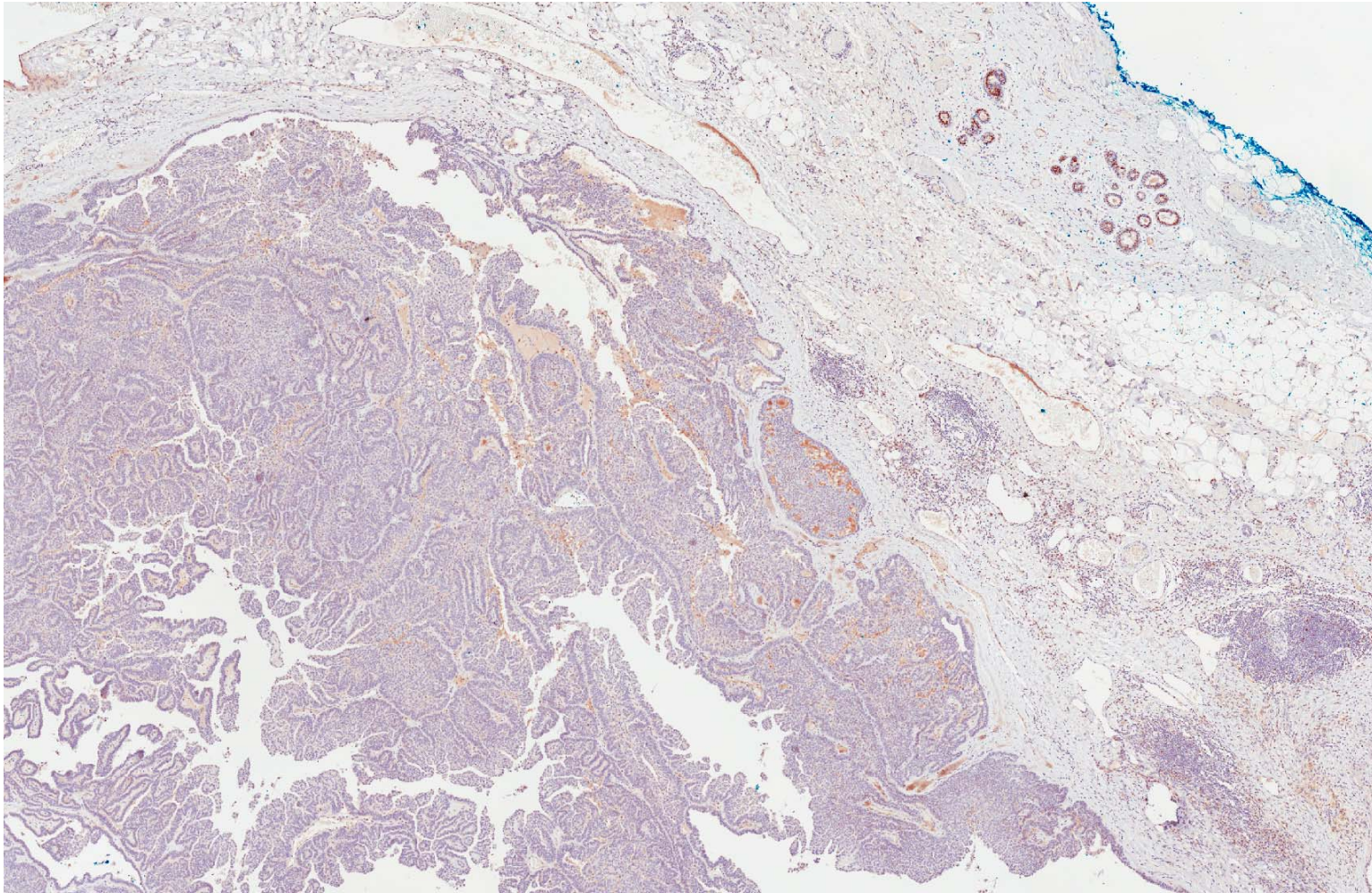




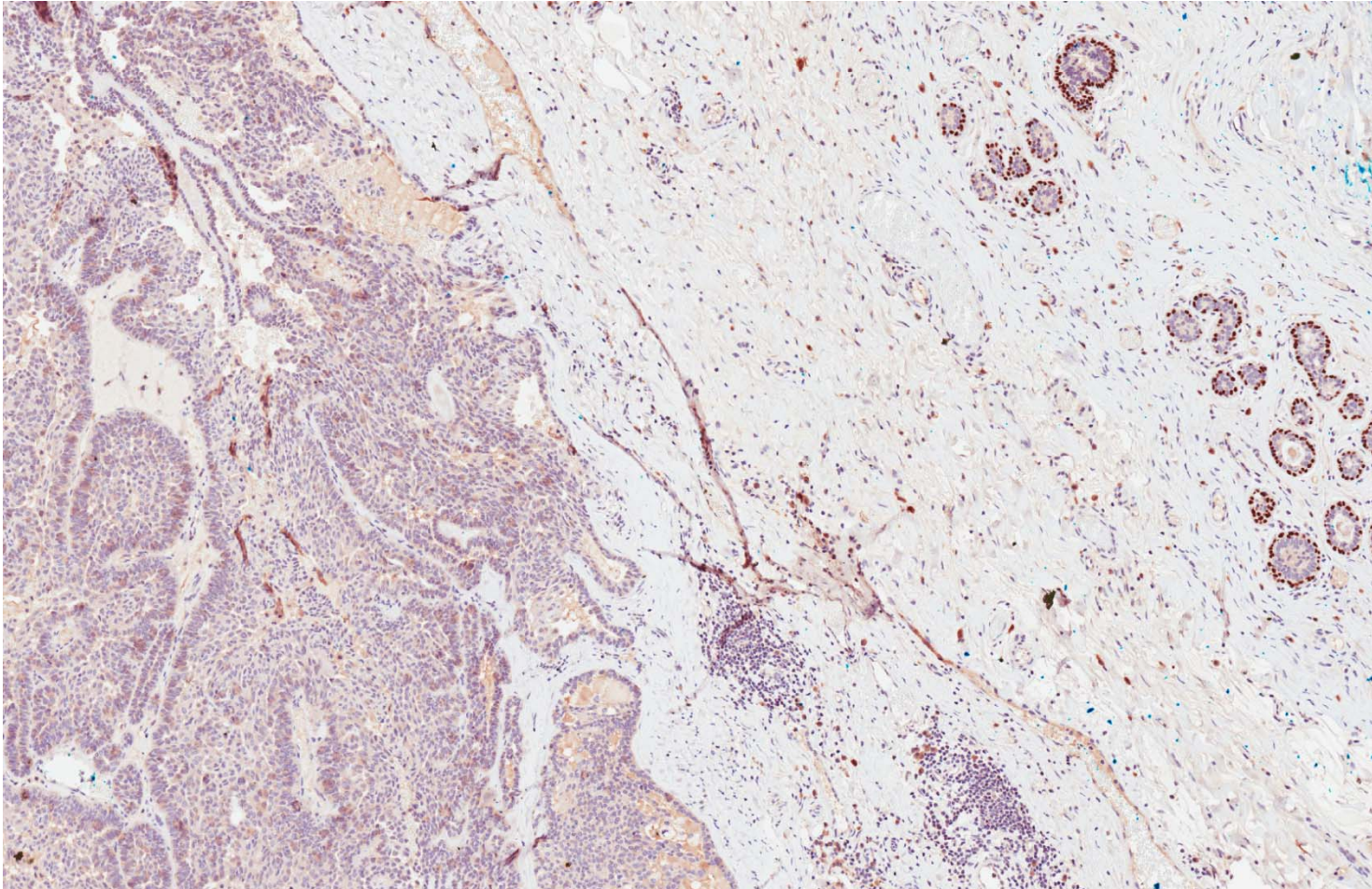




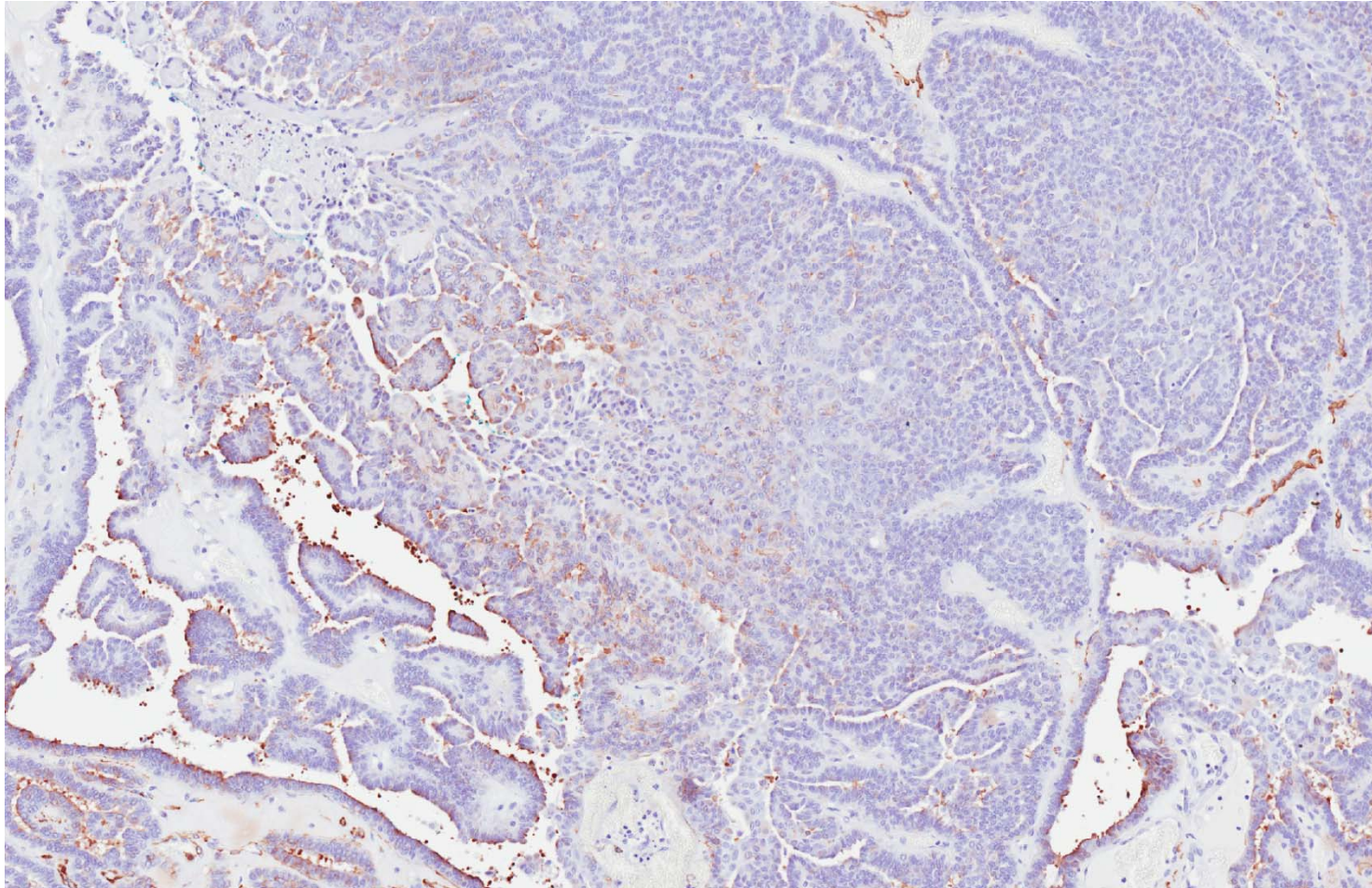
Estrogen receptor



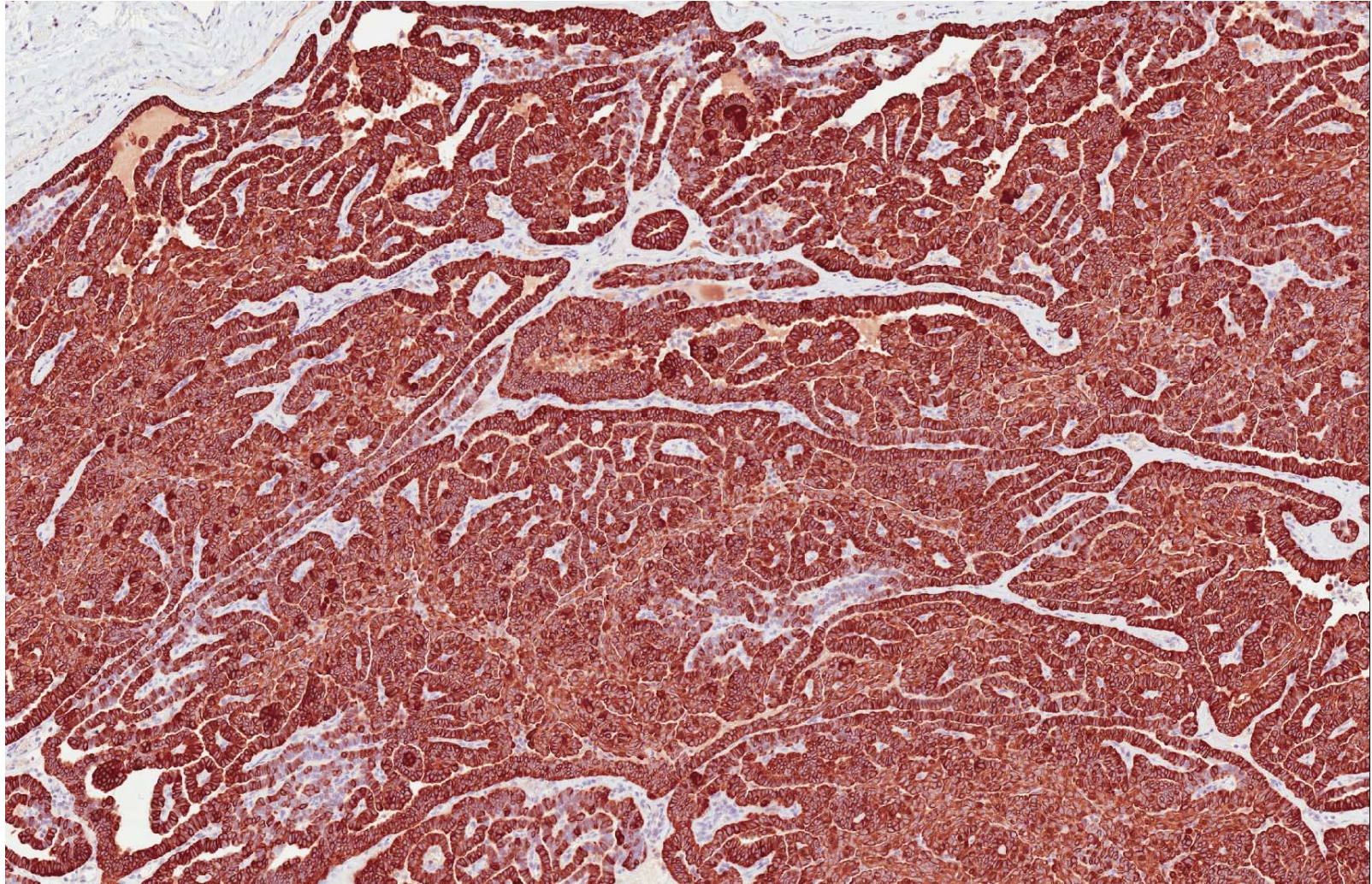
p63



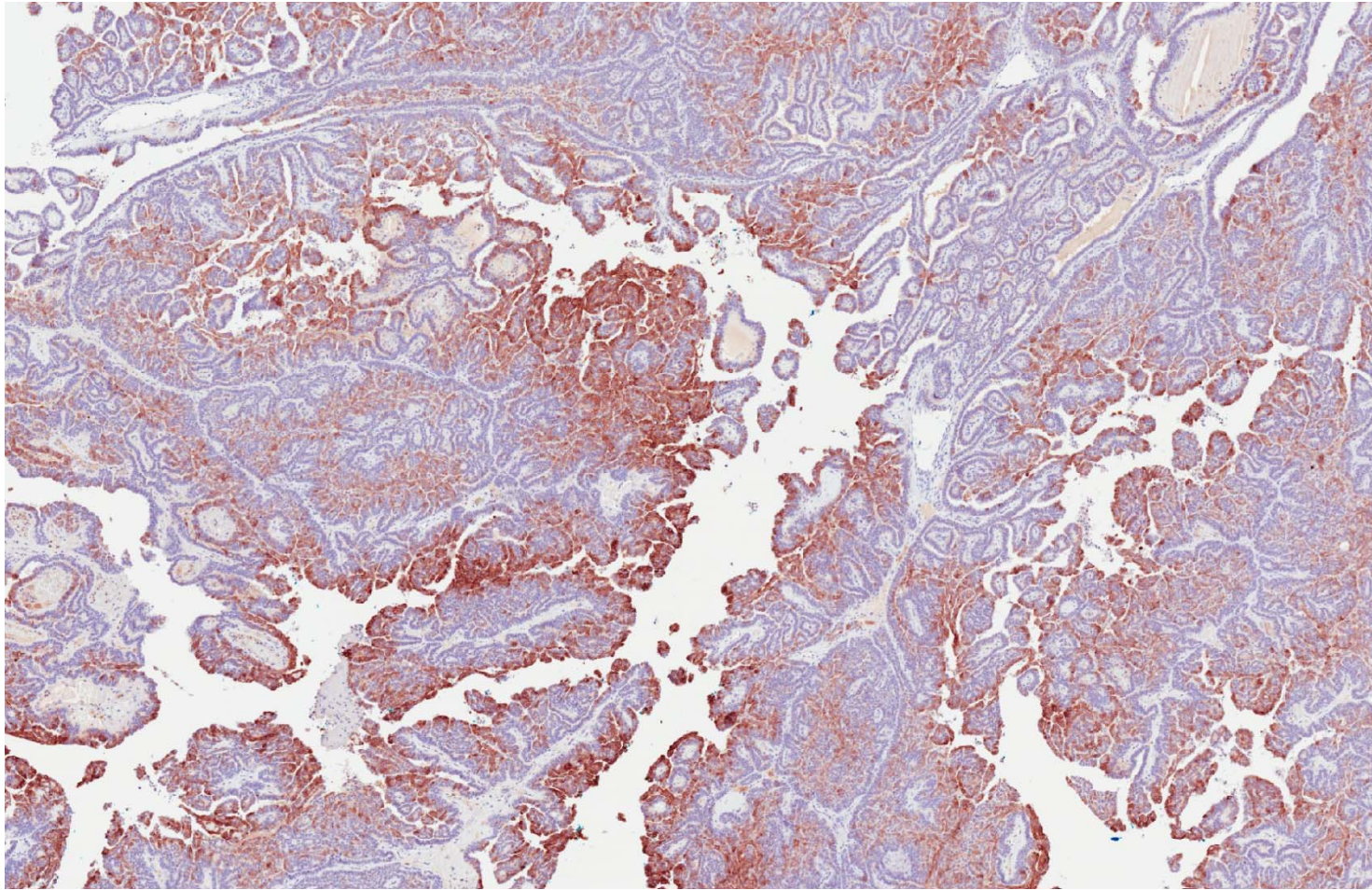
SMA



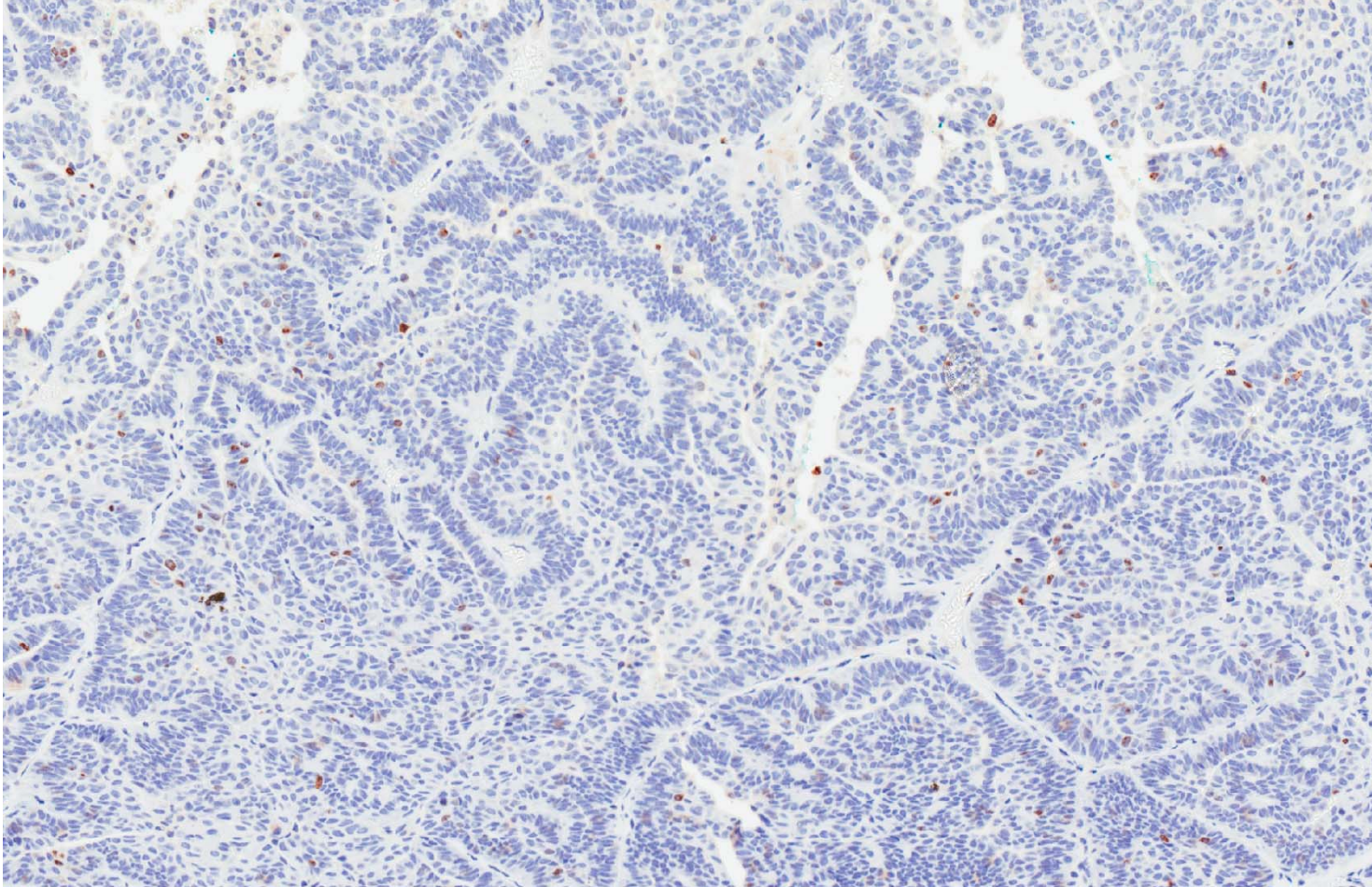
CK14



CK5/6



Ki67



Key histologic findings

- Intraductal papillary lesion with unusual features
- CK14 and CK5/6 (basal keratins) diffusely and patchily expressed respectively.
- Lack of myoepithelial cells, with absence of p63, CD10 and general absence of SMA staining in the lesion.
- Low proliferative activity.

- Unusual case.
- Histologic benignity but apparent absence of myoepithelial cells.
- Basal phenotype.
- Histogenesis - ?adnexal.