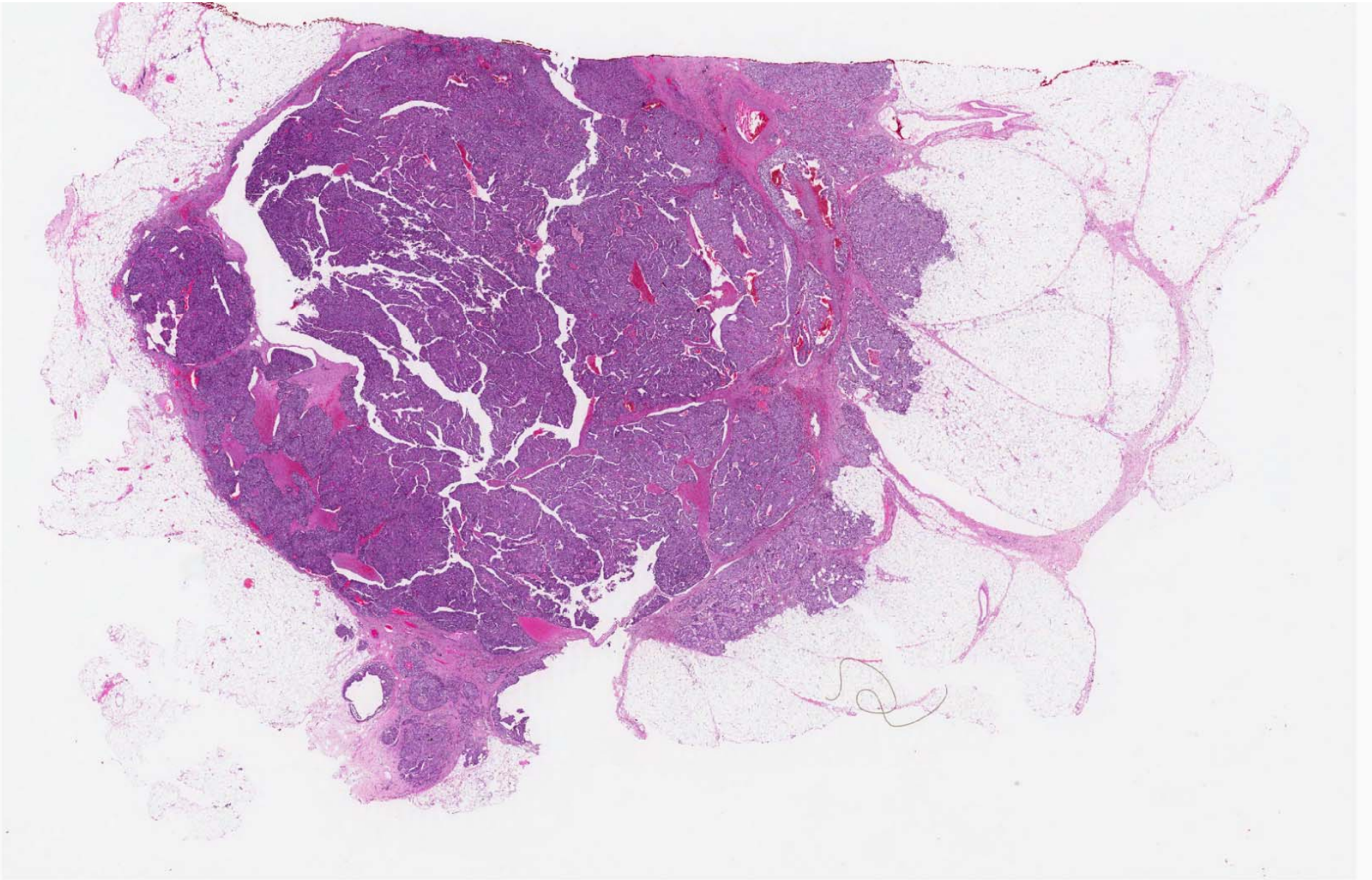
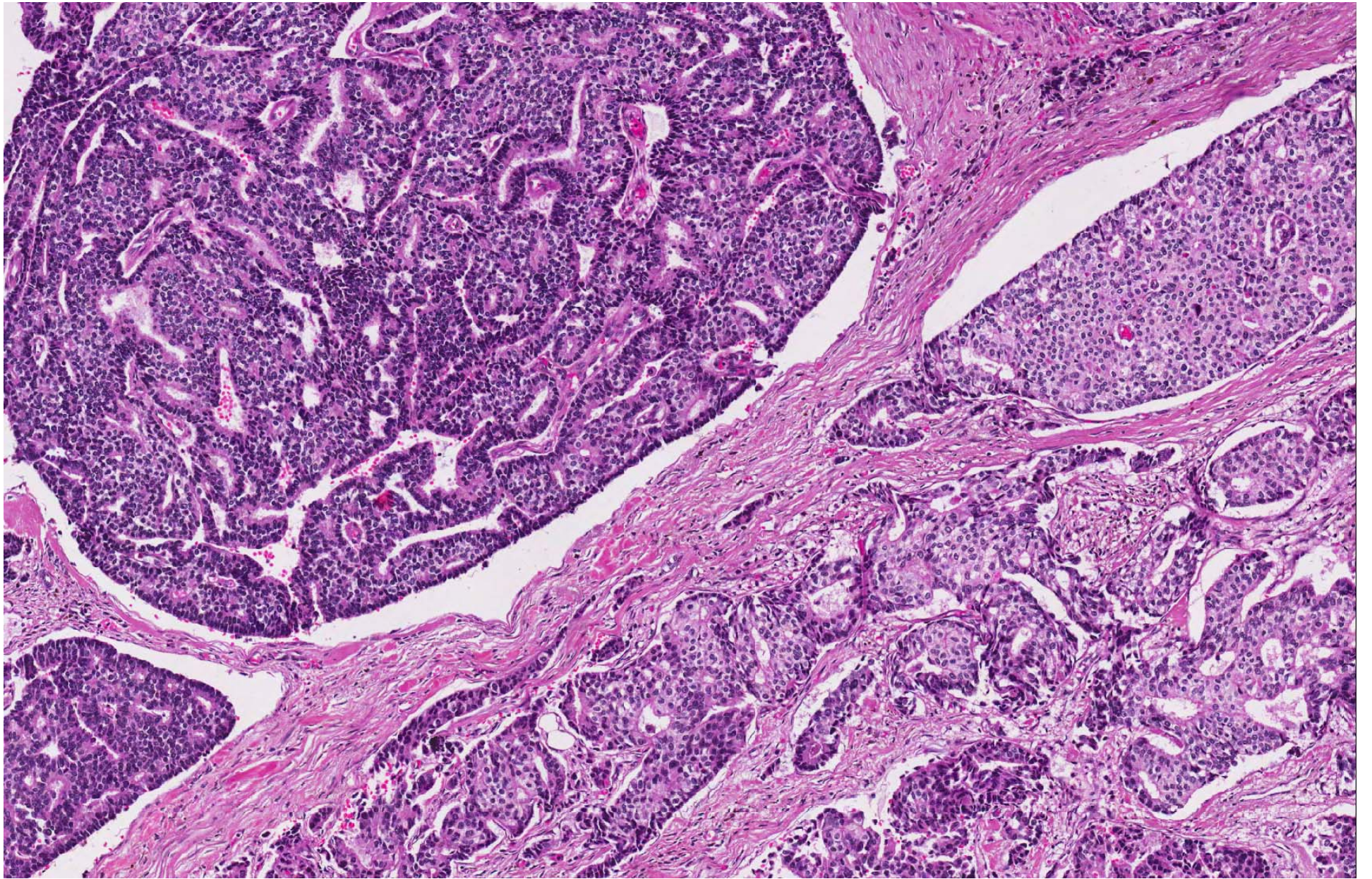
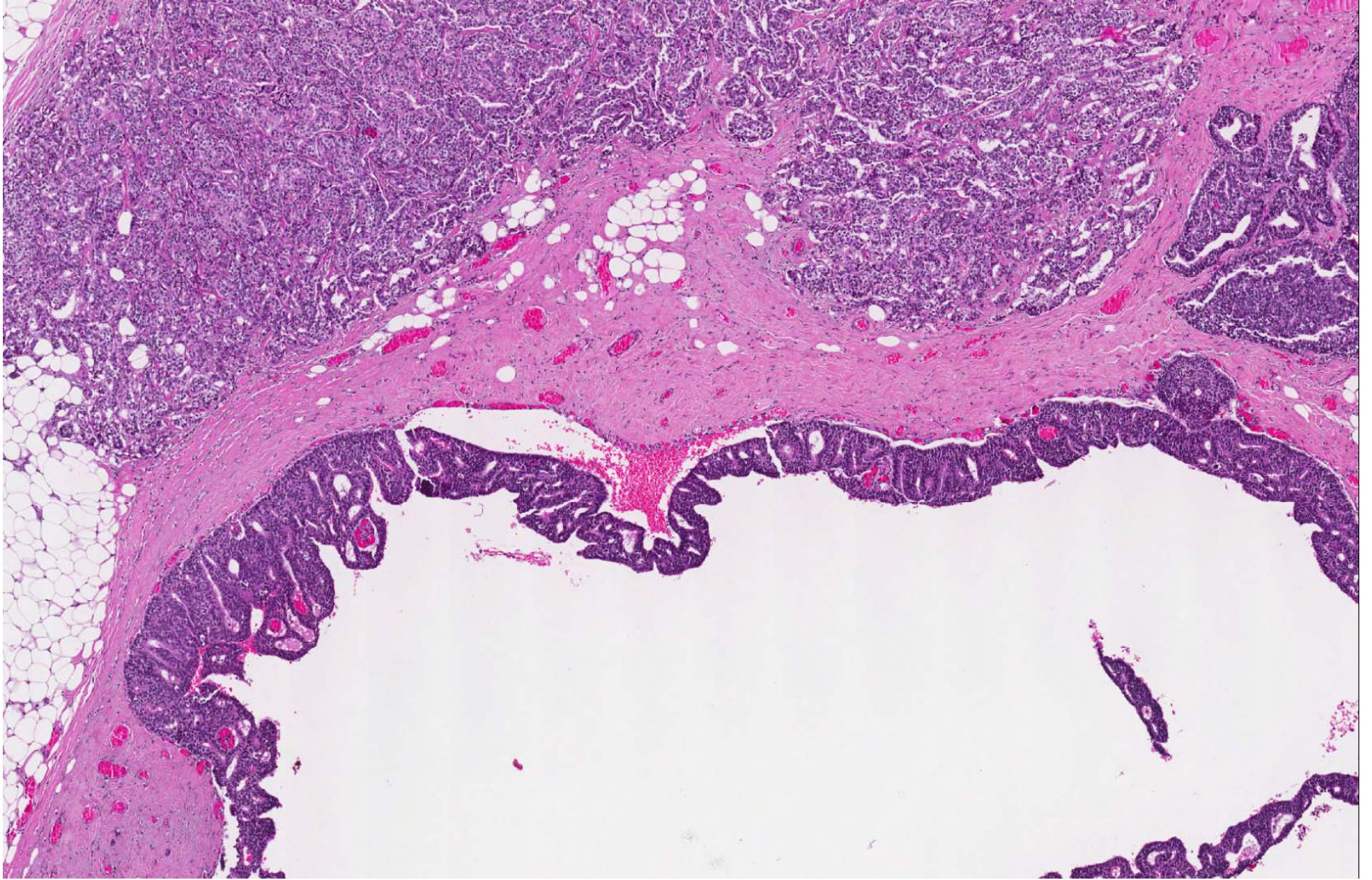
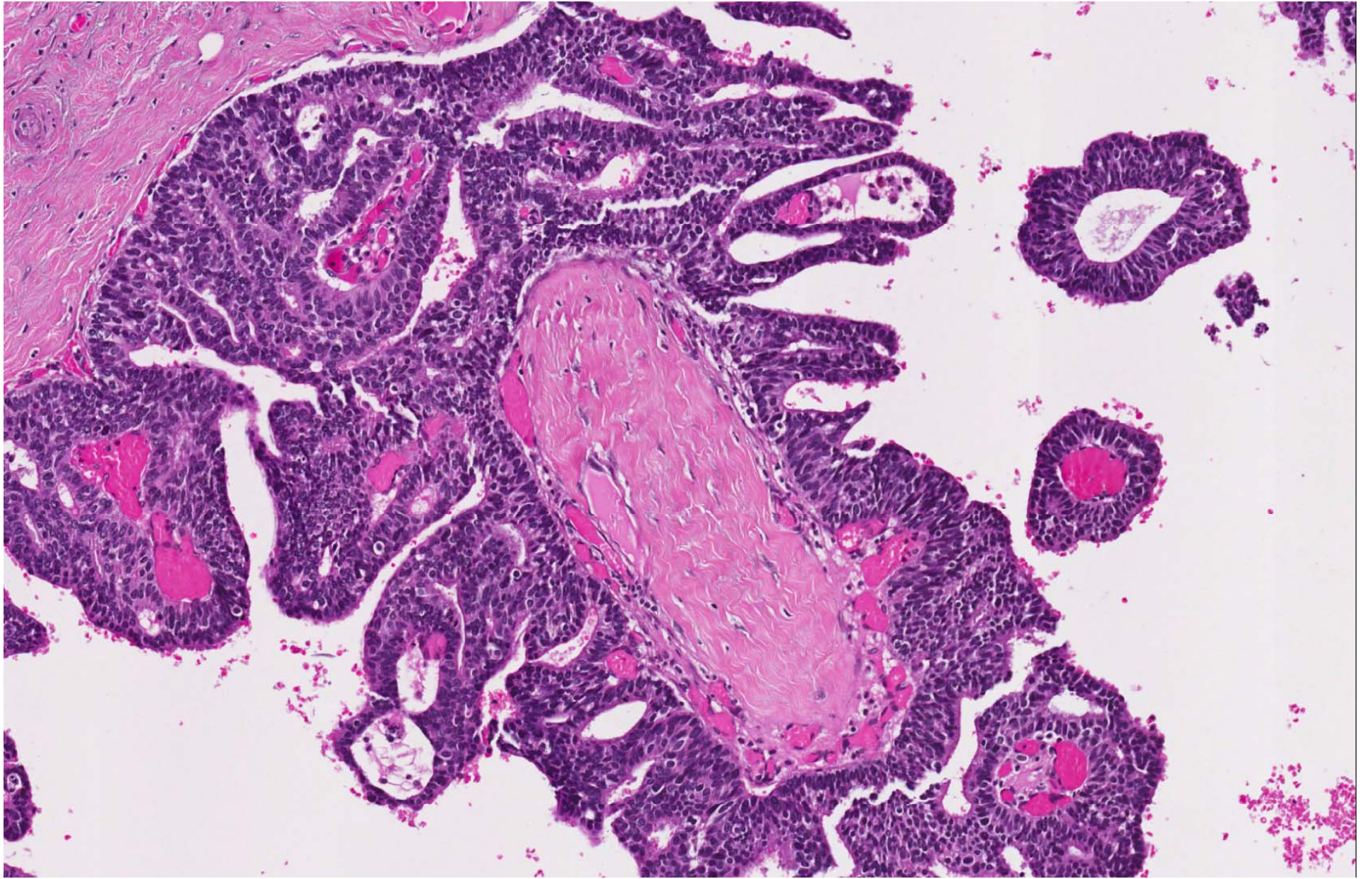


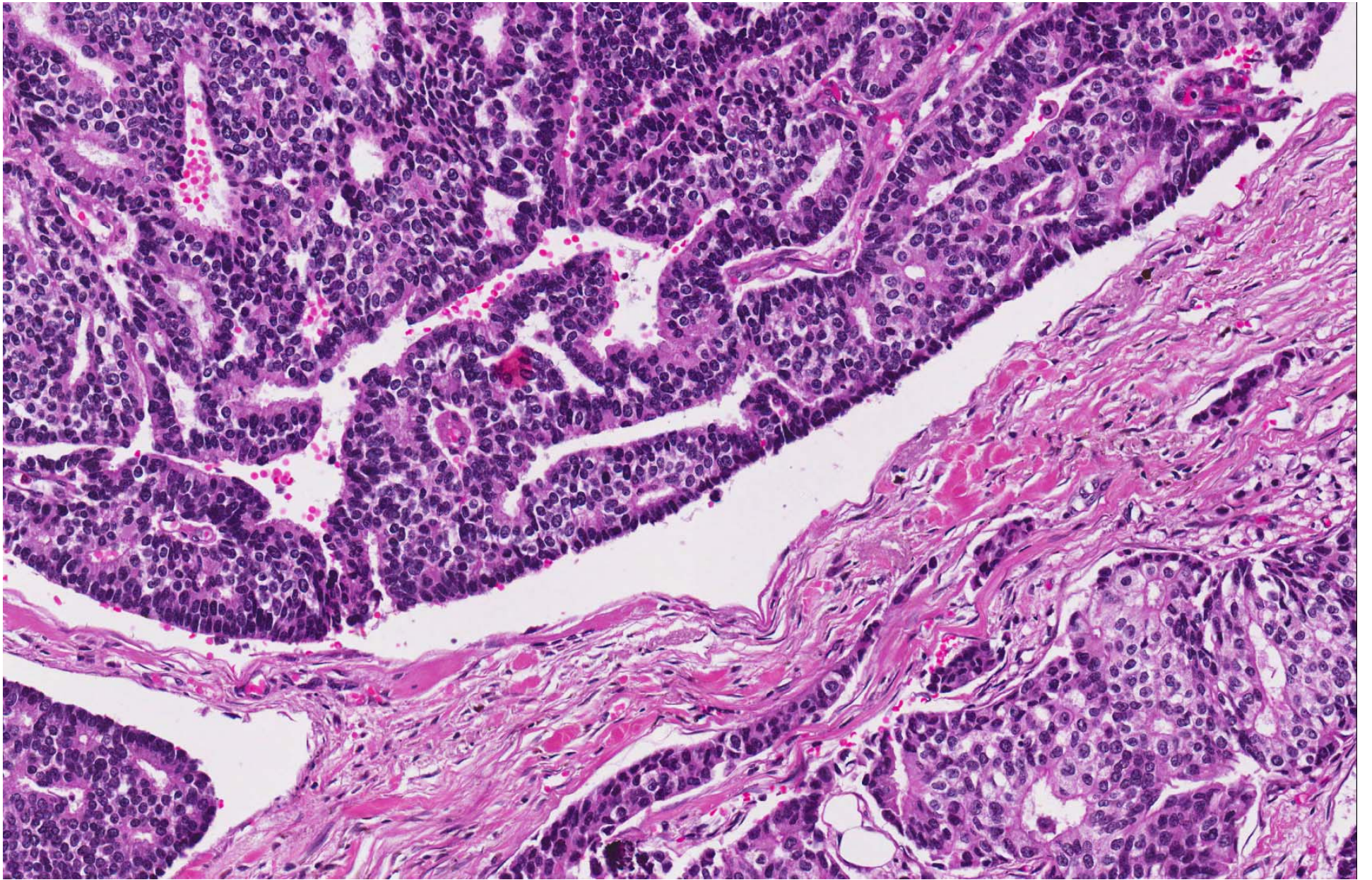
- Set A.13
- 64 year old Chinese female underwent left mastectomy after a preoperative trucut biopsy of a left breast mass confirmed malignancy.

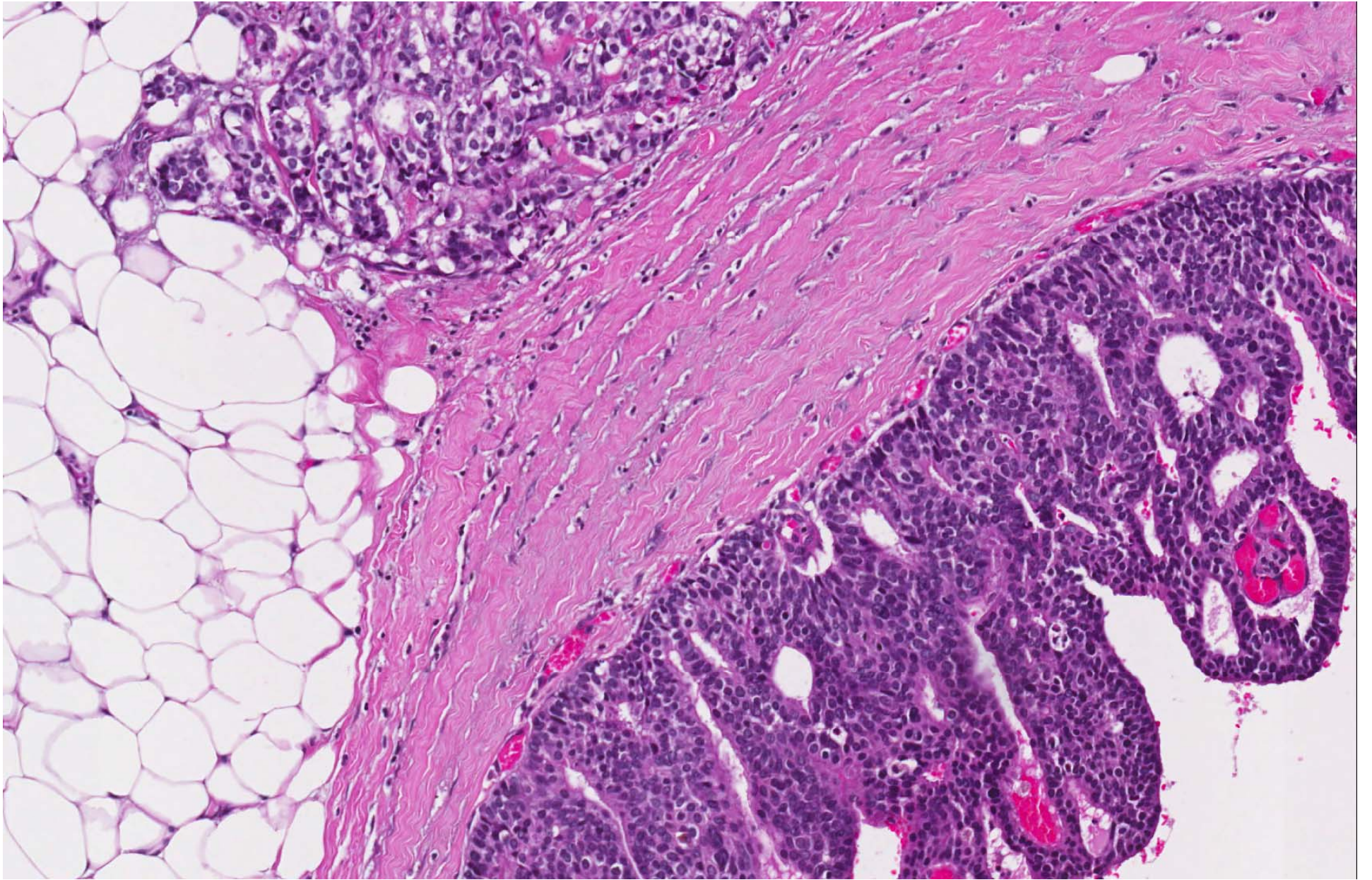


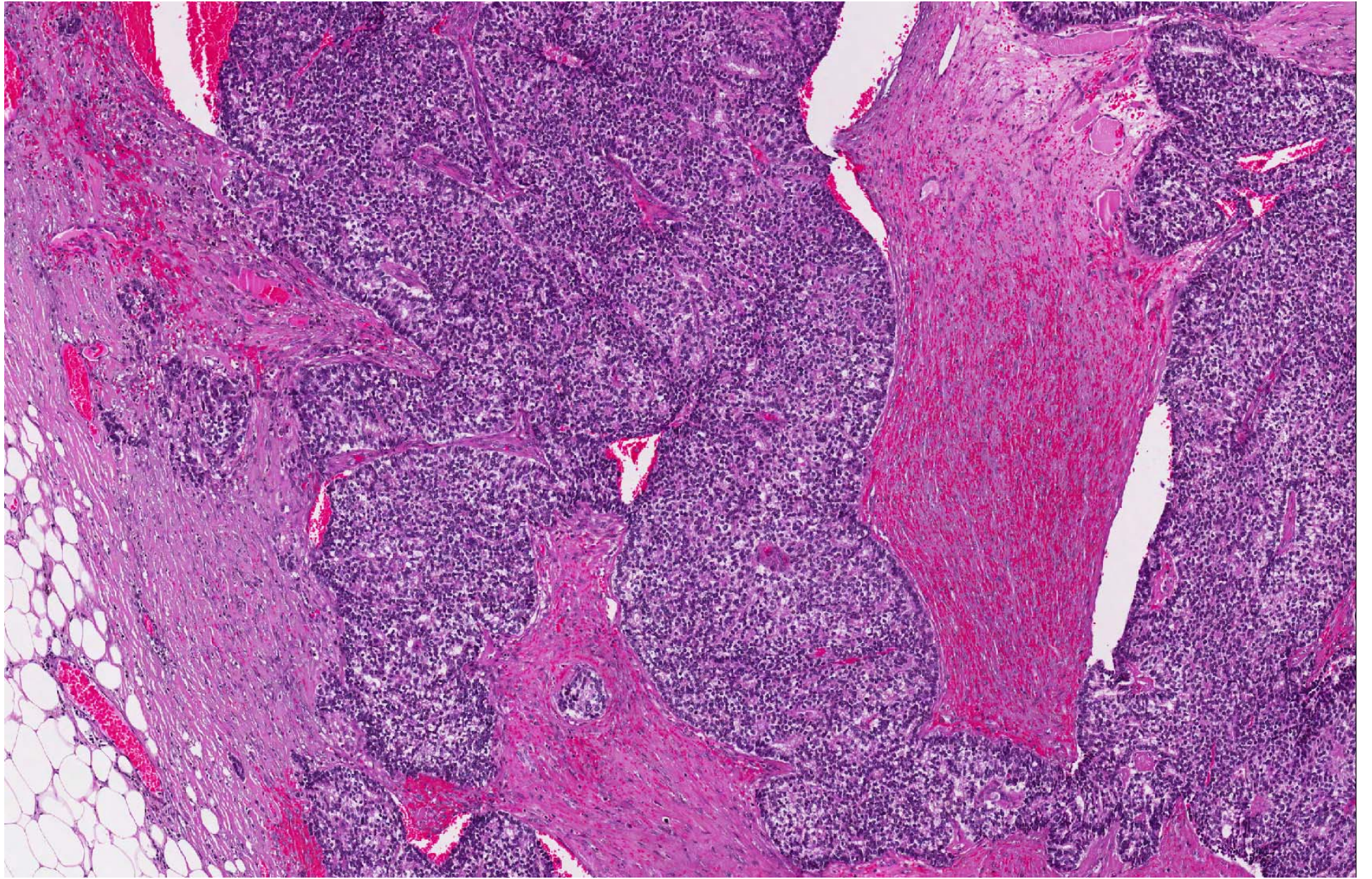


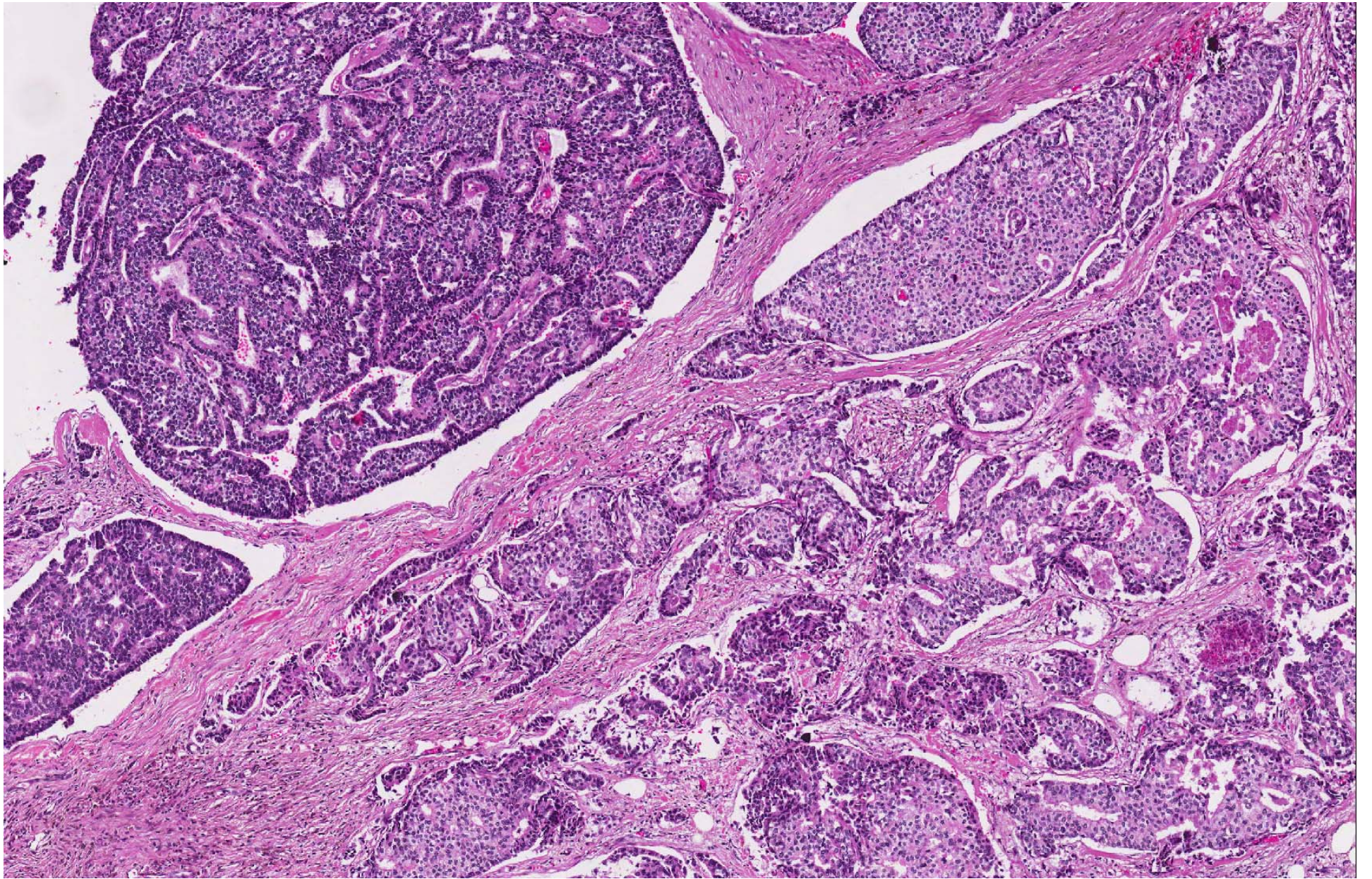


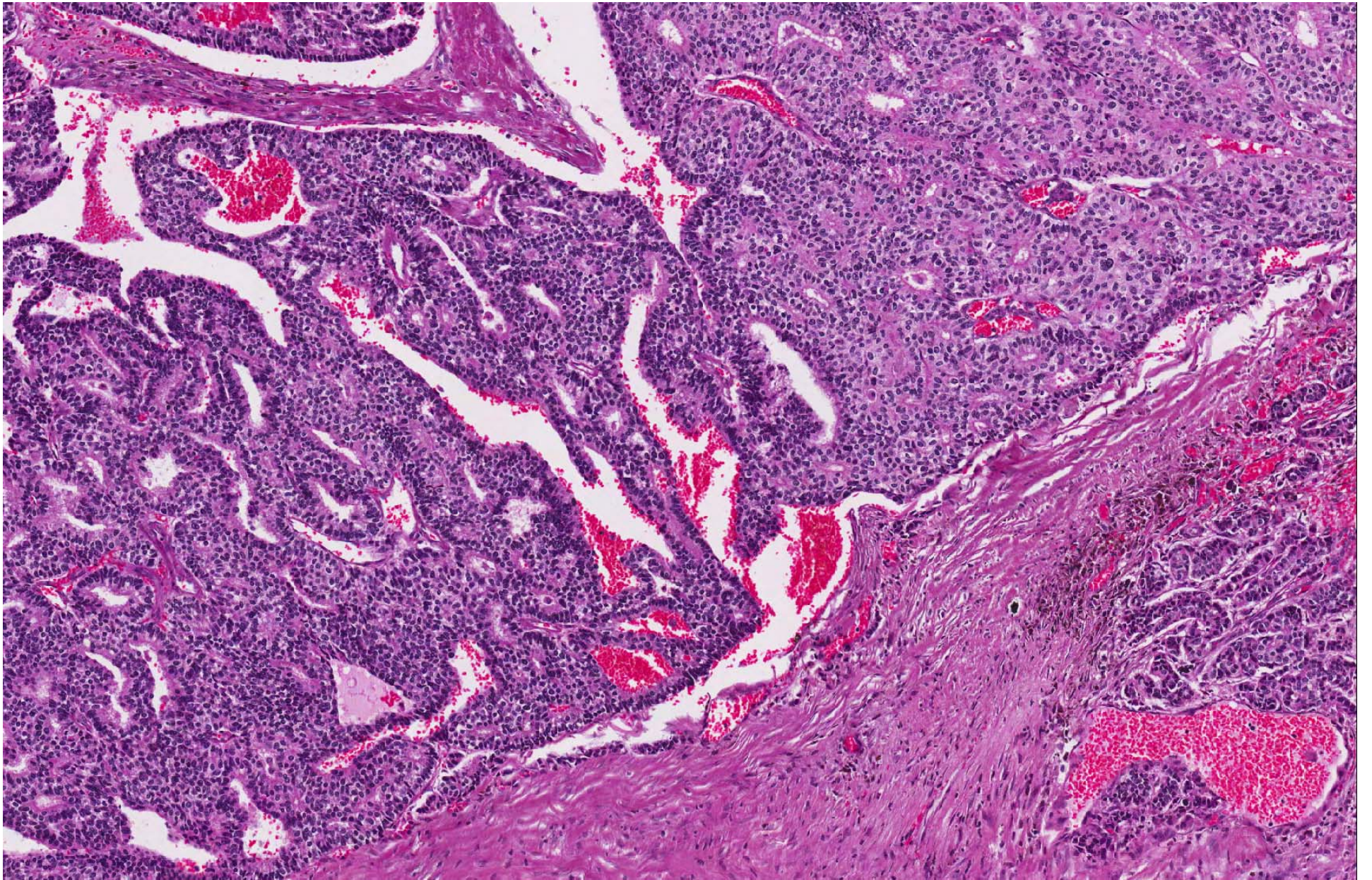


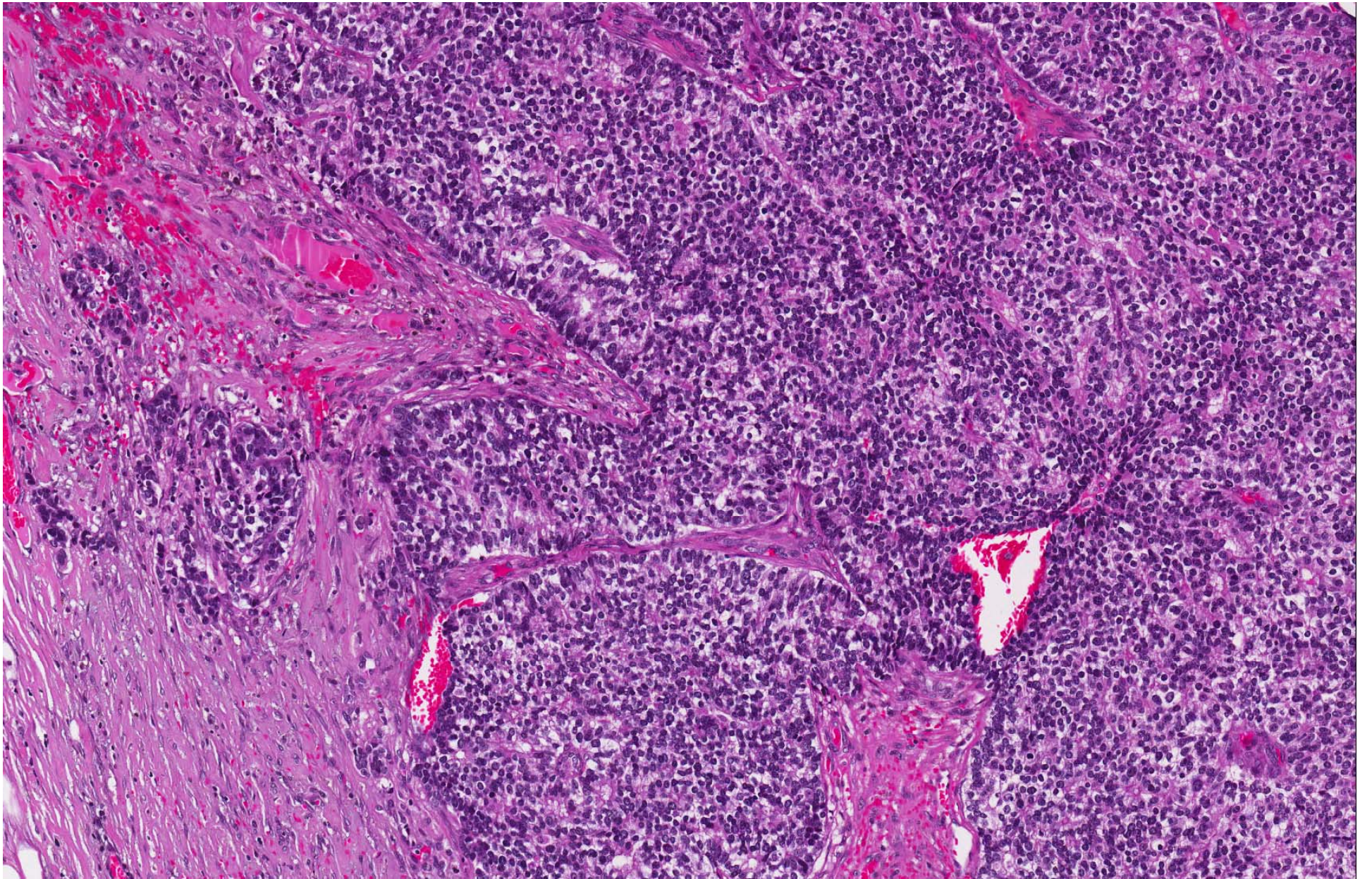


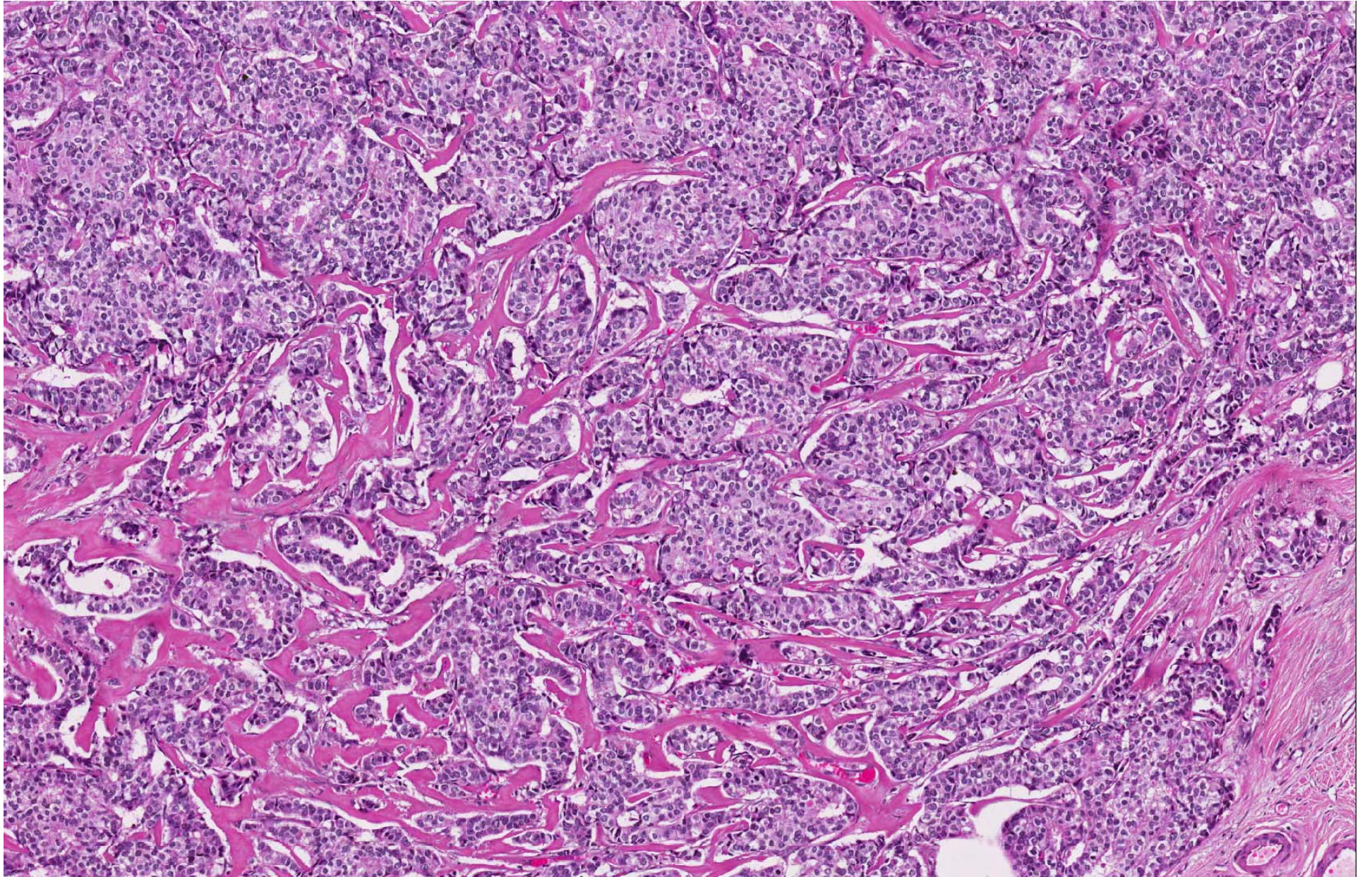


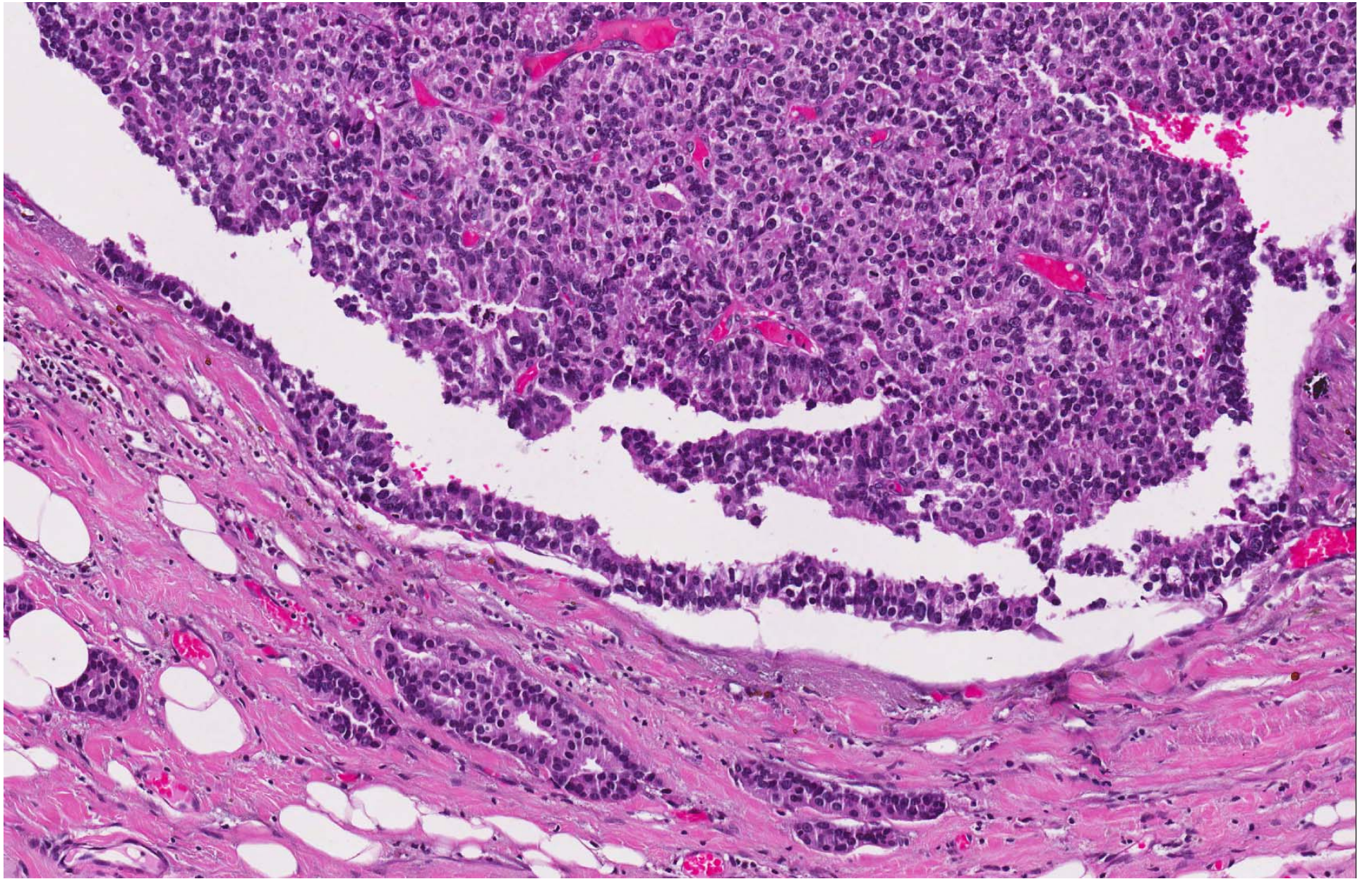


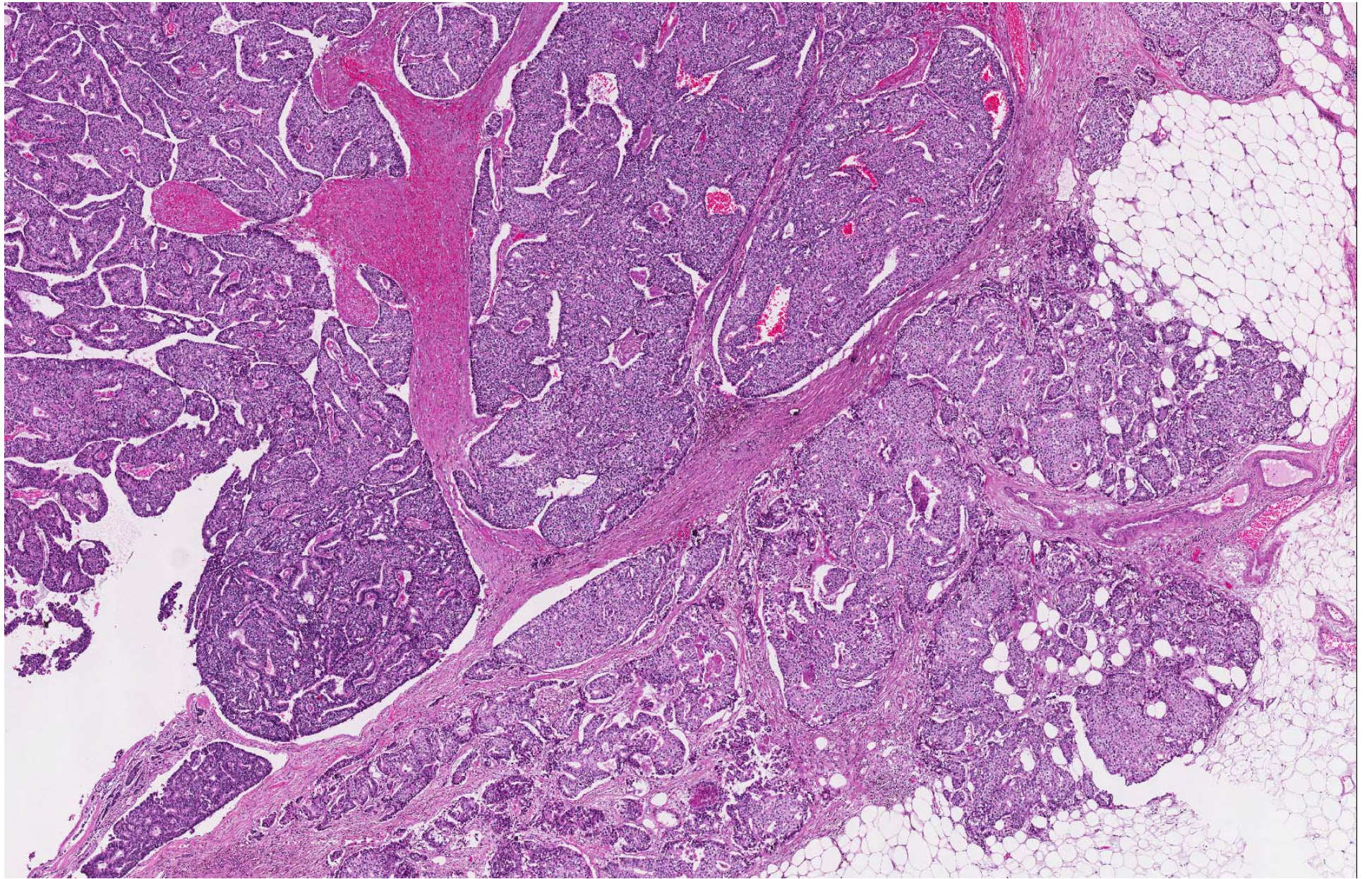


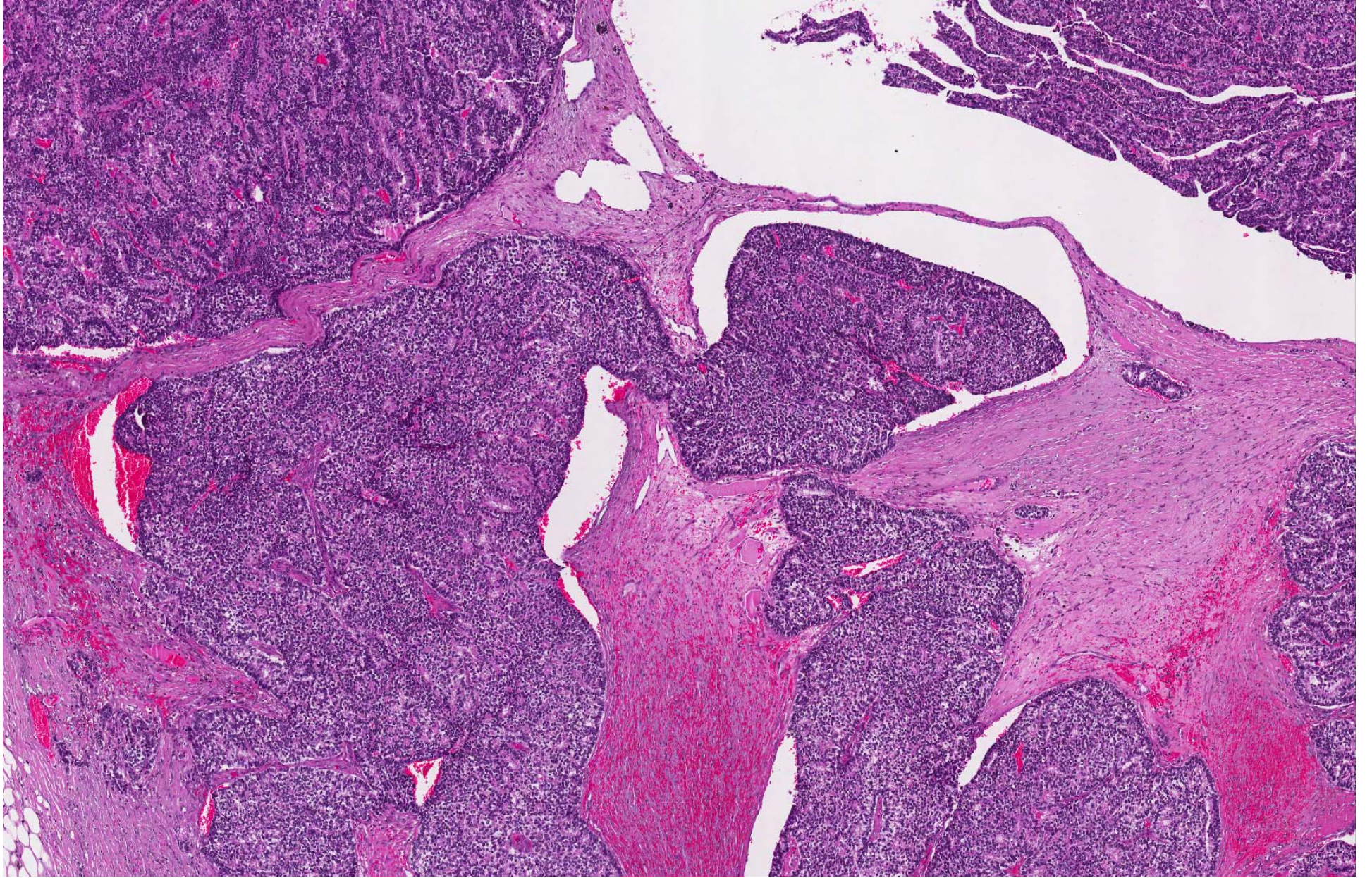












- Intracystic papillary carcinoma with invasive ductal carcinoma.

- Intracystic papillary carcinoma.
- Encysted papillary carcinoma.
- Encapsulated papillary carcinoma.

Encapsulated/Intracystic papillary carcinoma

- Papillary carcinoma within a cystically dilated duct, 'encysted papillary carcinoma'.
- Absence of myoepithelial cells in the wall.
- ?DCIS, ?low grade invasive carcinoma with an expansile growth pattern.

Collins et al. Am J Surg Pathol 2006; 30: 1002-1007.

Hill & Yeh. Am J Clin Pathol 2005; 123: 36-44.

- Excellent prognosis with complete excision.
- Evaluate adjacent breast tissue for DCIS and invasive carcinoma.

Encapsulated/Intracystic papillary carcinoma:

diagnosis and measurement of invasion

- Invasive component should lie beyond the fibrous capsule of the lesion.
- Only invasive component measured for determining T stage.

Learning points

- Terminology of intracystic papillary carcinoma.
- Identification of invasion.
- Histologic subtype of invasion.
- Measurement of invasive component.