

# SGH Alumni Newsletter

ISSUE 5 | APRIL — JUNE 2014

01

**AROUND THE CAMPUS**

04

**ALUMNI NEWS**

05

**UPCOMING EVENTS**



SGH PGMI  
Postgraduate  
Medical Institute

## NEW APPOINTMENTS

### Key Leadership Appointments



**Dr Adrian Ee Guan Liang**  
Chief Executive Officer  
*SingHealth Polyclinics*



**Dr Tay Ee Guan**  
Deputy Chief Executive Officer and  
Director, Clinical & Corporate Services  
*SingHealth Polyclinics*



**Prof Aung Tin**  
Executive Director  
*Singapore Eye Research Institute*



**Assoc Prof Lim Soo Teik**  
Deputy Medical Director  
*National Heart Centre Singapore*



**Assoc Prof Chan Choong Meng**  
SGH Campus Director, Education  
*SingHealth*



**Dr Nancy Tee Wen Sim**  
Director  
*SingHealth Institutional Biosafety  
Committee (IBC) Office*

### Clinician Leadership Appointments



**Assoc. Prof Ong Hock Soo**  
Head, Upper GI/Bariatric Surgery  
*Singapore General Hospital*



**Dr Ng Chee Eng David**  
Head, Nuclear Medicine & PET  
*Singapore General Hospital*



**Dr Foo Wai Yin Marjorie**  
Head, Renal Medicine  
*Singapore General Hospital*



**Assoc Prof Tan Thuan Tong**  
Head, Infectious Diseases  
*Singapore General Hospital*

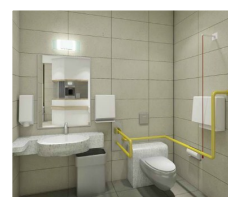
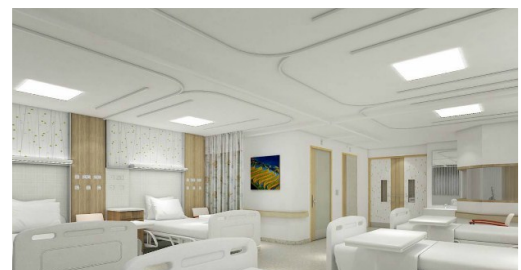
## NEW DEVELOPMENTS

### WARD REMODELING EXHIBITION

With the completion of Academia, more space has been freed up to build new wards at Block 6, Levels 5 to 7. Features of the new wards will:

1. improve patient and staff safety,
2. create a healing environment,
3. make work more efficient,
4. provide for staff needs and
5. optimize space.

If you would like to find out more about all of the exciting features and understand the remodeling from concept to design, visit the Ward Remodeling exhibition at SGH Block 5, Level 3 T-Stem from Monday to Friday, 9am to 6pm (except Public Holidays). ■



## NEW DEVELOPMENTS

### SON TO MAKE WAY FOR NEW COMMUNITY HOSPITAL



The School of Nursing (SON) will be demolished in July 2014 to make way for a new community hospital which is targeted to be completed by 2020. Established in 1956 under the purview of the Ministry of Health, the School of Nursing was home to thousands of student nurses, many of whom lived on-site. The school closed its door in 1992 when the Ministry of Education established a new nursing diploma programme in Nanyang Polytechnic. Since then, the building has been used for mainly administrative and research purposes. ■



### NHCS AT 5 HOSPITAL DRIVE

The NHCS at Mistri Wing will be closed from 5 March and all its outpatient services will be transferred over to the new building located at 5 Hospital Drive (opposite SGH Block 4). However, the inpatient wards of Ward 44, Ward 56 and Cardiothoracic Surgery Intensive Care Unit (CTICU) will remain at SGH.

Please note that:

- Orchid Thai Café at Mistri Wing will cease operations from 15 February.
- The shuttle bus will stop plying from NHCS Mistri Wing from 5 March. Shuttle bus service for the NHCS new building will start from 10 March 2014.
- Both front and side entrances of Mistri Wing will be closed from 10 March. Access to the door of Car Park I and glass door near Bowyer Block lift remain open during office hours.



The NHCS is located at 5 Hospital Drive, Singapore 169609. For more information, please call 6704 8000 or visit [www.nhcs.com.sg](http://www.nhcs.com.sg).

NHCS is located at 5 Hospital Drive, Singapore 169609. ■

### RELOCATION OF PERITONEAL DIALYSIS CENTRE

The Peritoneal Dialysis Centre (PDC) which previously resides at the School of Nursing (SON Building) has been relocated to SGH Block 4 Level 1. The PDC provides individualized consultation and therapy to help patients choose the most suitable peritoneal dialysis treatment for their needs. It also caters to walk-in patients who develop ad-hoc problems in their peritoneal dialysis, and provides a 24-hour on-call nursing service to patients hospitalized in SGH.

The Peritoneal Dialysis Centre shares the same premises as Renal Health and is located at Block 4 Level 1 (besides 7 Eleven). ■





## EVENTS OVERVIEW

## Singapore Health Quality Service Award 2014

At the Singapore Health Quality Service Award (SHQSA) 2014, SGH bagged 1,385 awards—147 stars, 348 Gold and 888 Silver. Congratulations to all Team SGH and all the winners!

Held yearly, SHQSA honours healthcare professionals who demonstrated remarkable commitment to delivering quality care and excellent service. ■



Award recipients with senior management.



More than 50 management staff including CEO Prof Ang Chong Lye, CMB Prof Fong Kok Yong and GEO Prof Ivy Ng brought festive cheer to patients who have to spend Lunar New Year in the hospital by presenting them with mandarin oranges. Our nurses also raised funds for food hampers which they distributed to more than 200 patients in the C Class wards. This year, tradition is also extended to Specialist Outpatient Clinics where doctors gave oranges to patients after their clinic consultation. ■

## SGH PROJECT GROOMOVER



280 SGH Campus staff volunteered to clean the houses of more than 26 needy residents in Bukit Merah. Volunteers presented the residents with kettle, rice cooker, fan, blanket, beds and pillows and Chinese New Year food hampers. Doctors were also present to conduct health screening for the residents while pharmacists check on their medication.



The Groomover is an annual spring cleaning project for selected needy and elderly SGH patients from the COPE or Care Outreach group identified by social workers. ■

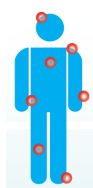
## CONTINUING CARE AT FMC

A partnership between SingHealth and private GP group TriLink, the newly opened Family Medicine Clinic (FMC) at Chinatown Point cares for public and patients with stable chronic conditions. To ensure seamless care delivery, doctors at FMC have access to patients' medical records through the National Electronic Health Record (NEHR). They also work with SingHealth specialists and case managers to co-manage patients' conditions.

Located at 133 New Bridge Road, #02/09-10, Chinatown Point, Singapore 059413, FMC is CHAS enabled. For more information, please email [info@chinatown.com.sg](mailto:info@chinatown.com.sg). ■



## EVENTS OVERVIEW



## TOP 10 PAIN:

## SGH PAIN MANAGEMENT BILINGUAL PUBLIC FORUM

According to the Pain Association of Singapore, at least 300,000 adults are currently living with some form of pain. Some of the more common pain conditions seen by our SGH doctors include Back Pain, Neck Pain, Shoulder Pain and Osteoarthritis. On 1 March, 414 participants gathered at Deck on 9 (SGH Block 6, Level 9) to learn more about other painful conditions and what they can do to prevent it. ■



## SGH ALUMNI BENEFITS PROGRAMME 2014

*Exclusive services and offers for our alumni members!*



**Flipping Table** specializes in intelligent space-saving table solutions from Europe that are aesthetically beautiful and can be fully customized to fit your needs and preferences. Our products are fully sourced, designed, manufactured and shipped directly from Italy or Spain -offering the highest quality and elegance to meet your exacting needs.



Quote '**SGH Alumni**' to enjoy:

- **45% display table sale** for Italian flipping tables.
- **15% off** brand new Italian tables
- **15% off** Spanish space saving table



Flipping Table is located at Park Mall, 9 Penang Road, #B1-22, Singapore 238458. For more details regarding their products, please call 6337 1731 or visit [www.flippingtable.com](http://www.flippingtable.com).

Trapped is Singapore's best real escape room equipped with unique clues and puzzles to solve and escape from our professionally designed concept rooms!

Quote '**SGHTrapped**' to enjoy **15% off\***.

*\*Discounts not allowed to be combined with other discounts/promotions.*

Picture this, you're trapped in a room with your peers, and there seems to be almost no way out. Become the master at solving puzzles, discovering hidden clues, uncovering mysteries and succeeding to escape our well thought and creative concept rooms.

Trapped provides you the opportunity to put your mystery solving skills and IQ to the test. We've brought the online virtual escape games to reality, but with a twist. Book with us now to enjoy a mind-blowing experience.

Make sure you leave no stones unturned to escape our concept rooms!



Trapped is located at Kampung Glam Shop Houses, 42 Kandahar Street, Singapore 198896.

For more details, please call 6292 2177 or visit [www.trapped.sg](http://www.trapped.sg).



*Disclaimer: SGH PGMI hereby disclaims liability for any information, products or services posted or offered by these companies in the SGH Alumni Benefits Programme. SGH PGMI does not endorse nor recommend any products or services offered or information provided by these companies nor is SGH PGMI liable for any failure of products or services offered or advertised by these companies. Members are advised to check with the individual company before making selection.*

# Calendar of Events

## April 2014

**4-5 April**



6<sup>th</sup> Singapore International Parkinson's disease and Movement Disorders Symposium

Venue: The Academia

**26 April**

Public Forum on Rheumatoid Arthritis

Venue: Deck on 9, SGH

**12 April**

21<sup>st</sup> SGH Lecture & Formal Dinner

Venue: Ritz-Carlton Millenia



**26-27 April**



2<sup>nd</sup> Singapore Sarcoma Consortium Education & Research Meeting 2014

Venue: The Academia

## May 2014

**3 May**

- 9<sup>th</sup> Gynaecological and Early Pregnancy Ultrasound 2014

- Urology GP CME

Venue: The Academia



**24 May**

Survival Kit to Neuro-Ophthalmology

Venue: SNEC Tower Block, Level 4, Auditorium



**24 May**

GP Forum for Paediatric Health 2014

Venue: KKH Auditorium Training Centre, Level 1, Women's Tower



**31 May**

GP CME: Paediatric Eye Conditions and Strabismus

Venue: SNEC Tower Block, Level 4, Auditorium



For more information on PGMI programmes, please email: [pgmi.courses@sgh.com.sg](mailto:pgmi.courses@sgh.com.sg)

*\*All information is accurate at the time of printing.*



## 9TH GYNAECOLOGICAL & EARLY PREGNANCY ULTRASOUND WORKSHOP & 10TH ISUOG OUTREACH PRE-CONFERENCE WORKSHOP

### Who is the course for?

The programme is targeted at experienced sonographers, general practitioners, trainees, consultants and doctors who uses gynaecological ultrasound in their clinical work.

### Objectives

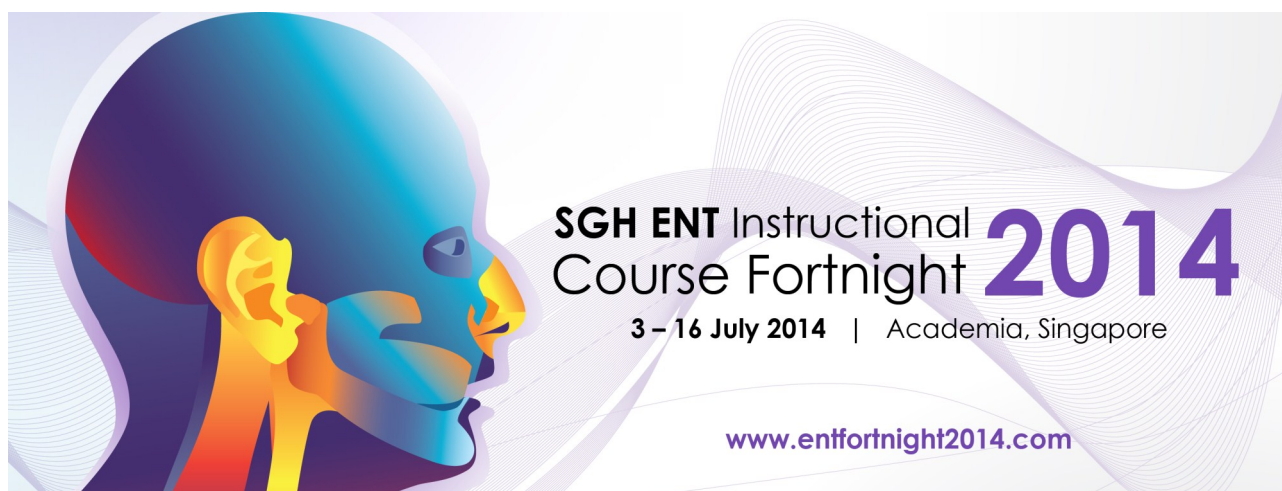
To gain an understanding of ultrasound physics, technology and advanced skills to perform and interpret the images with emphasis on common gynaecological conditions including endometriosis, adenomyosis and first trimester pregnancy failures. Topics include sonographic approach to endometriosis and recent advances in the ultrasound diagnosis of adenomyosis. Practical guidelines in the diagnosis of pregnancy failure, classification of miscarriage by ultrasound, ectopic pregnancy as well as normal and abnormal variations observed during first trimester will also be discussed.

### How it benefits you

Ultrasound is a quick and non-invasive test that is useful in the assessment of a patient's gynaecological complaints and is increasingly becoming an indispensable diagnostic tool in daily clinical applications. Through the morning lecture, participants will be taught the challenges and complexities of ultrasound diagnosis of gynaecological conditions. In the afternoon, participants will practice on patients with a range of gynaecological conditions during the hands-on session.

**Date:** 3 May 2014, Saturday  
**Time:** 8.30am—4.00pm  
**Venue:** Lectures  
 Academia (SGH Campus)  
 20 College Road, Level 1

Practical  
 Obstetrics & Gynaecology Centre  
 Block 5, Level 1



**SGH ALUMNI NEWSLETTER**

20 College Road,  
Academia, Level 2,  
Singapore 169856  
+65 6576 7658

**Advisory Board**

Assoc. Prof Peter Lim  
Ms. Emily Lim

**Editor**

Ms Shirley Au

**Contributors**

Ms Geraldine Tay

*This is an abridged version of the newsletter. To read more stories, please visit [www.sghalumni.wordpress.com](http://www.sghalumni.wordpress.com).*