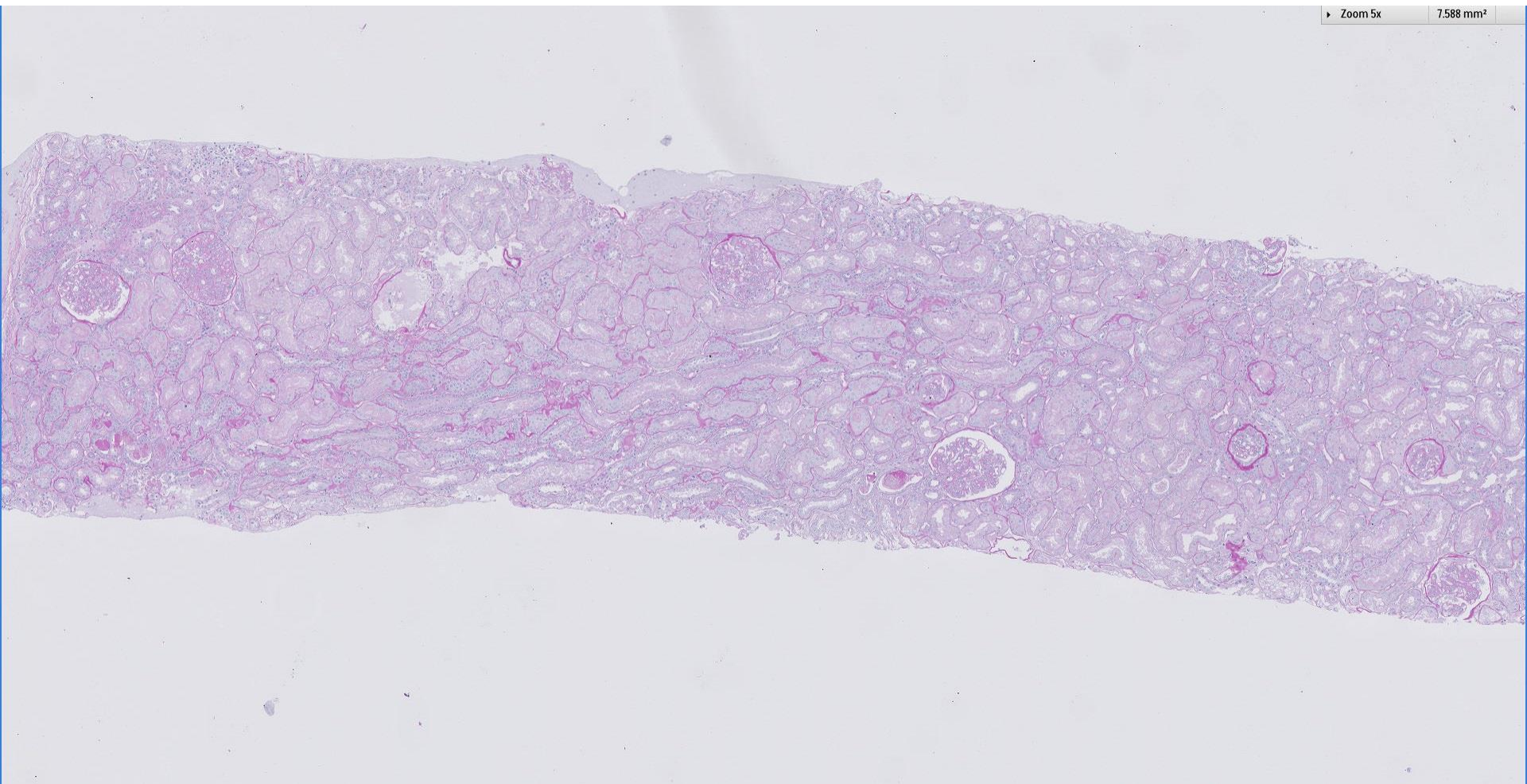


## *Case 34*

36 year old female with Raynaud's now has proteinuria and haematuria.

► Zoom 5x

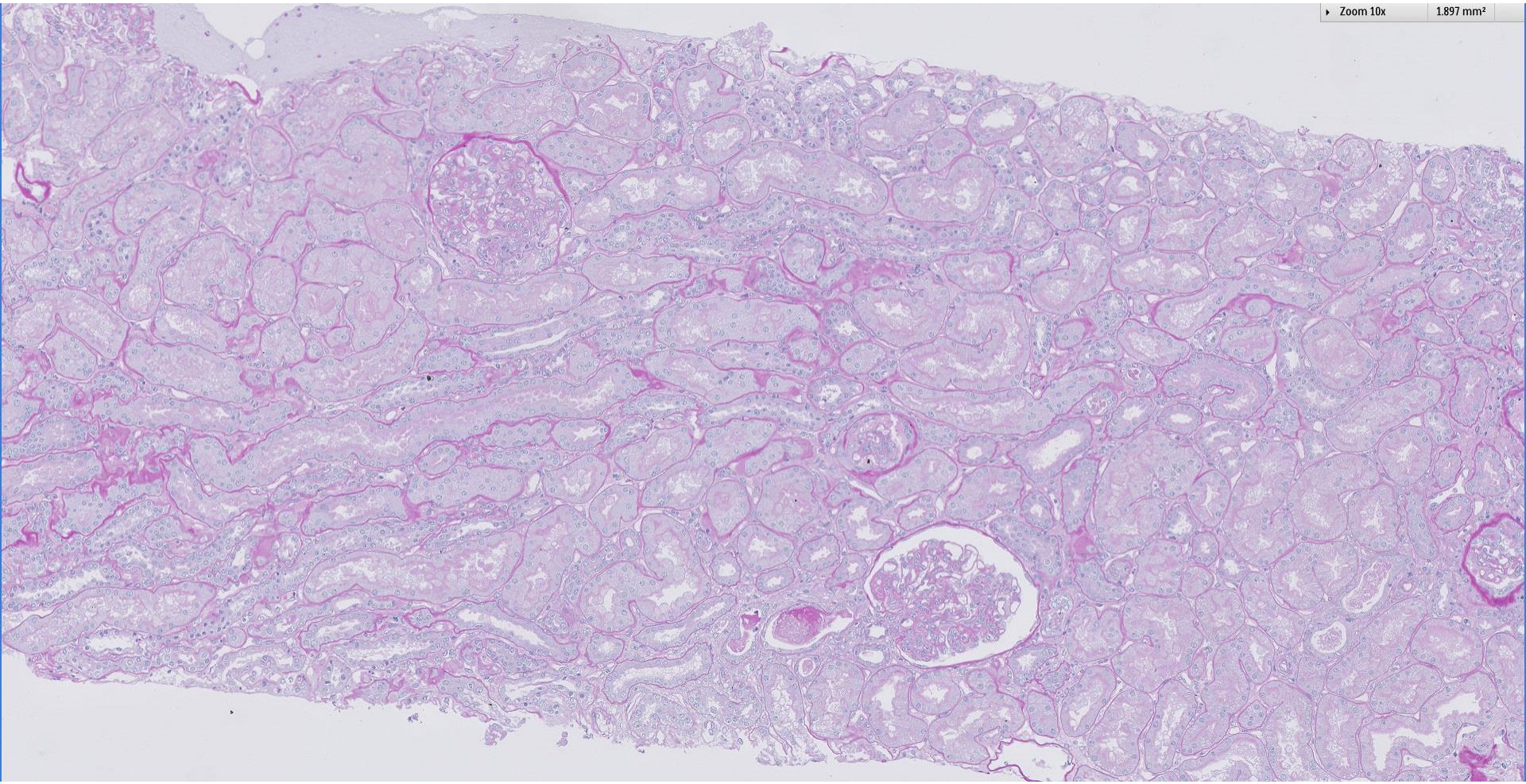
7.588 mm<sup>2</sup>



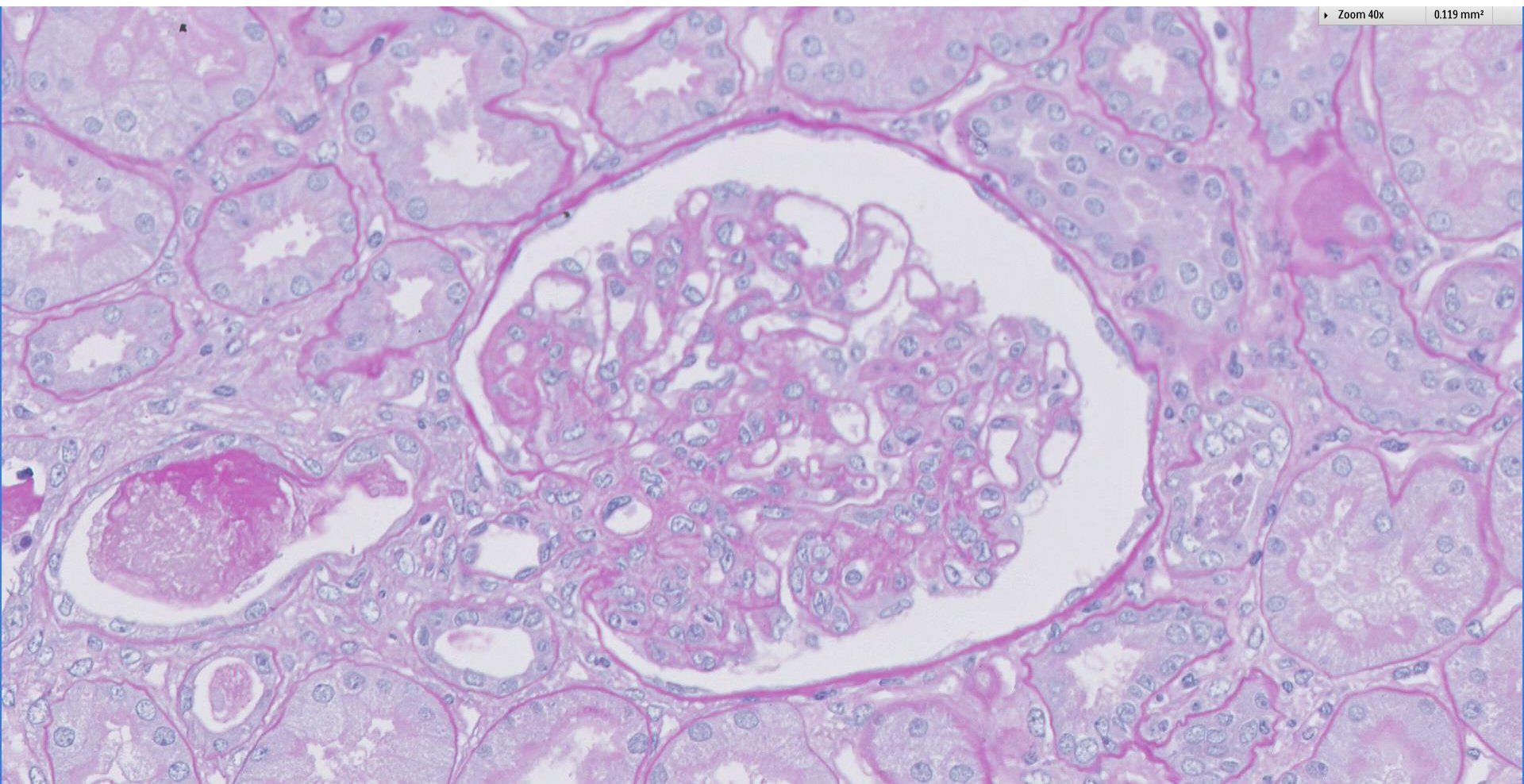


► Zoom 10x

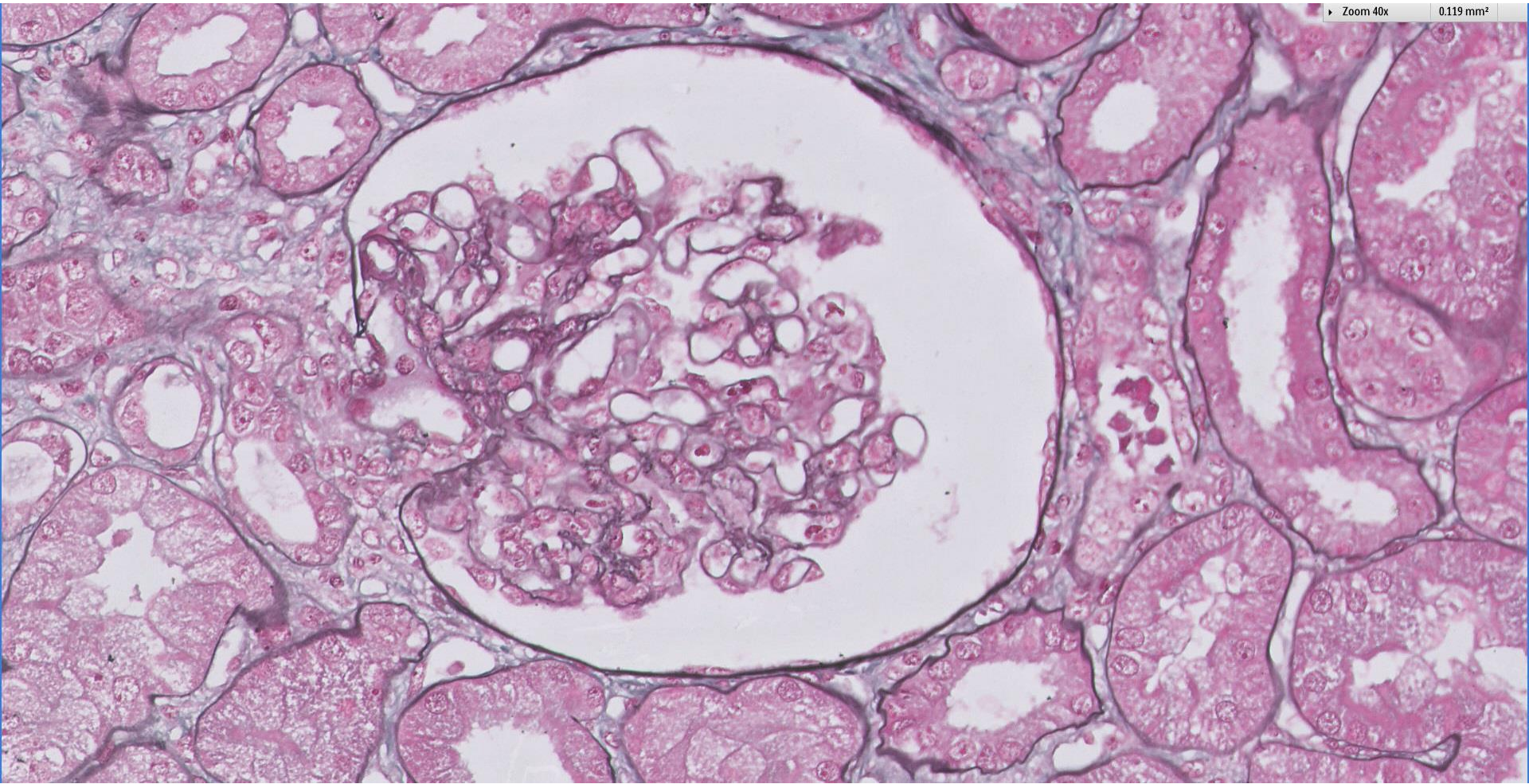
1.897 mm<sup>2</sup>





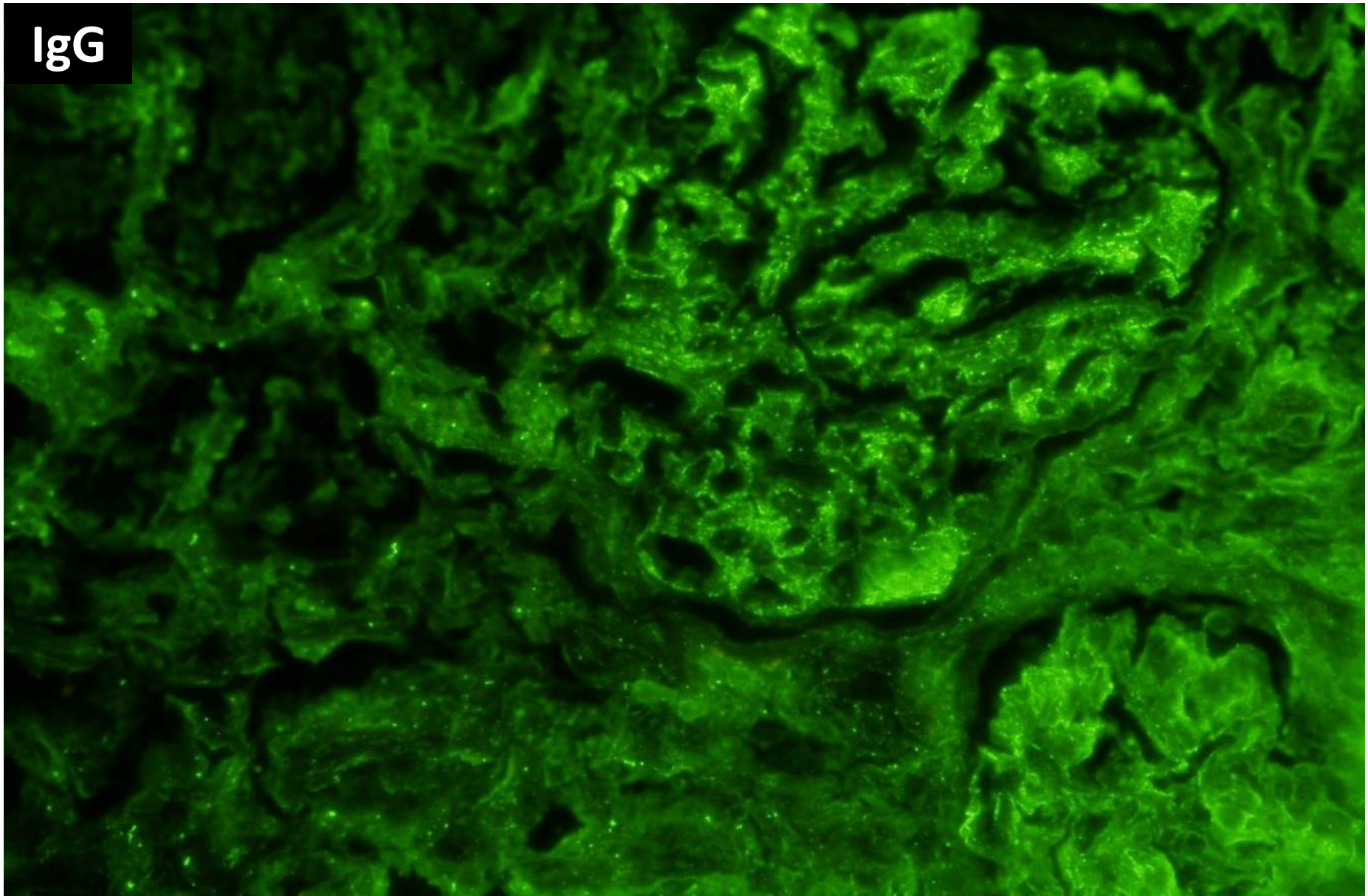




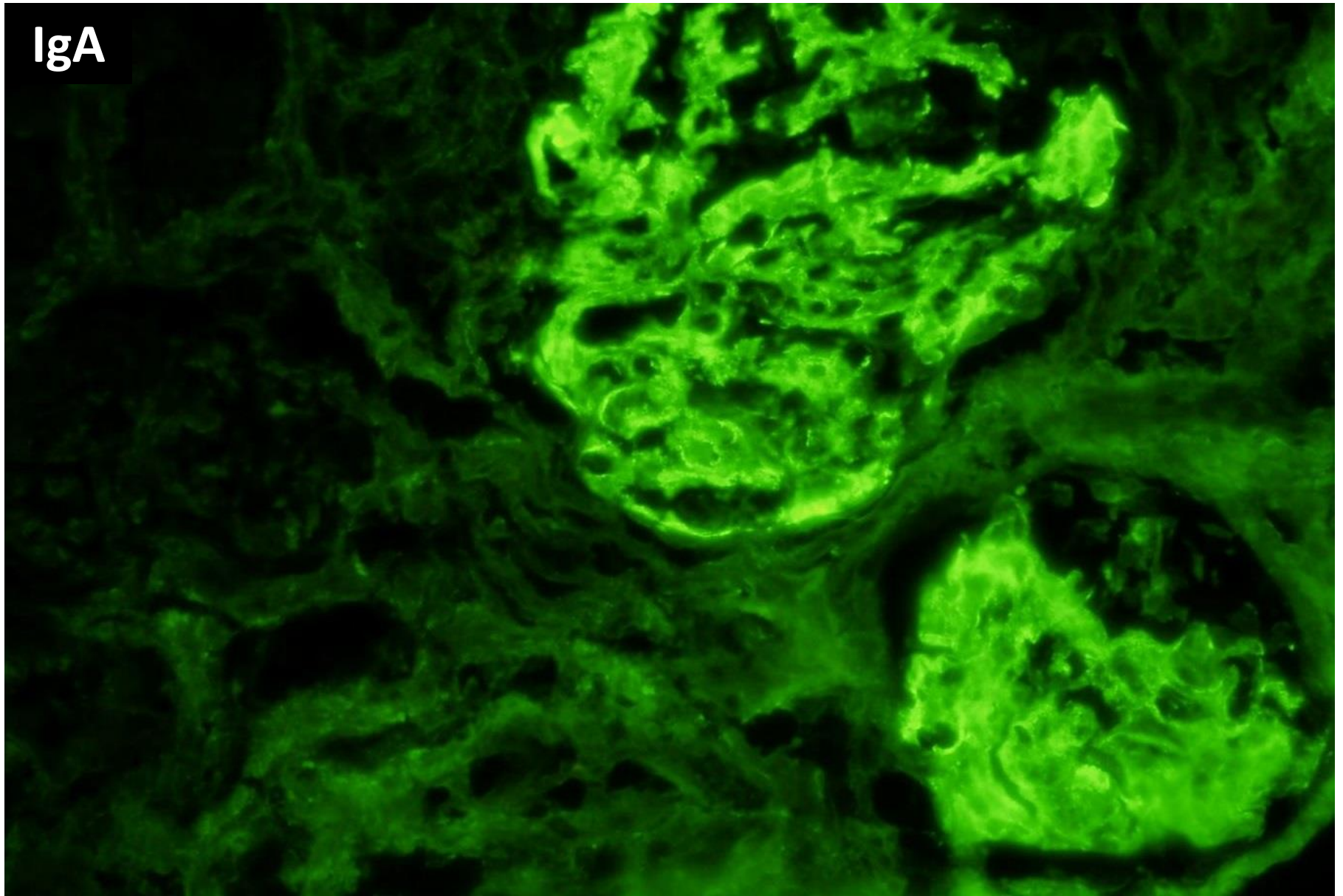




IgG

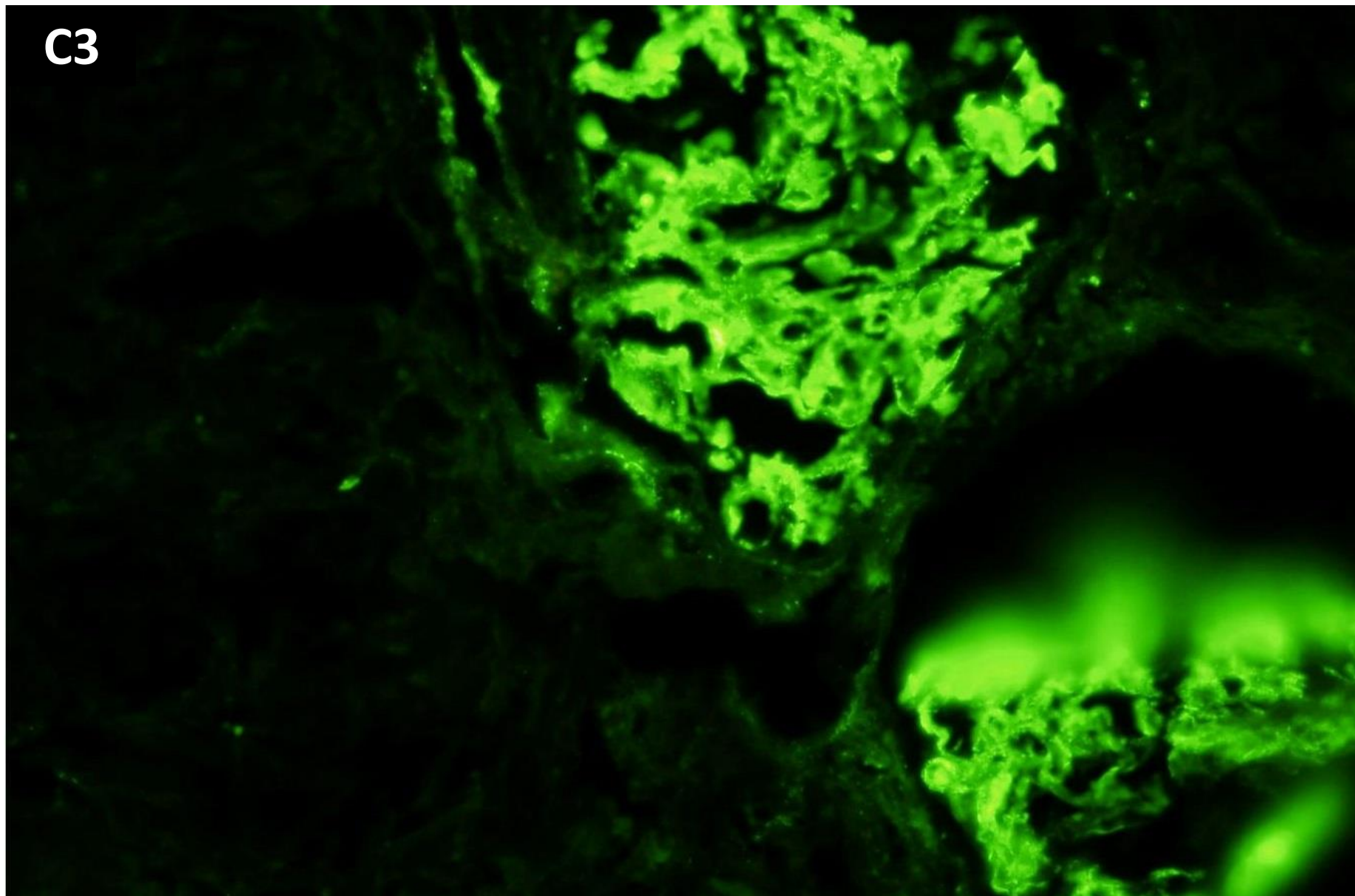


IgA



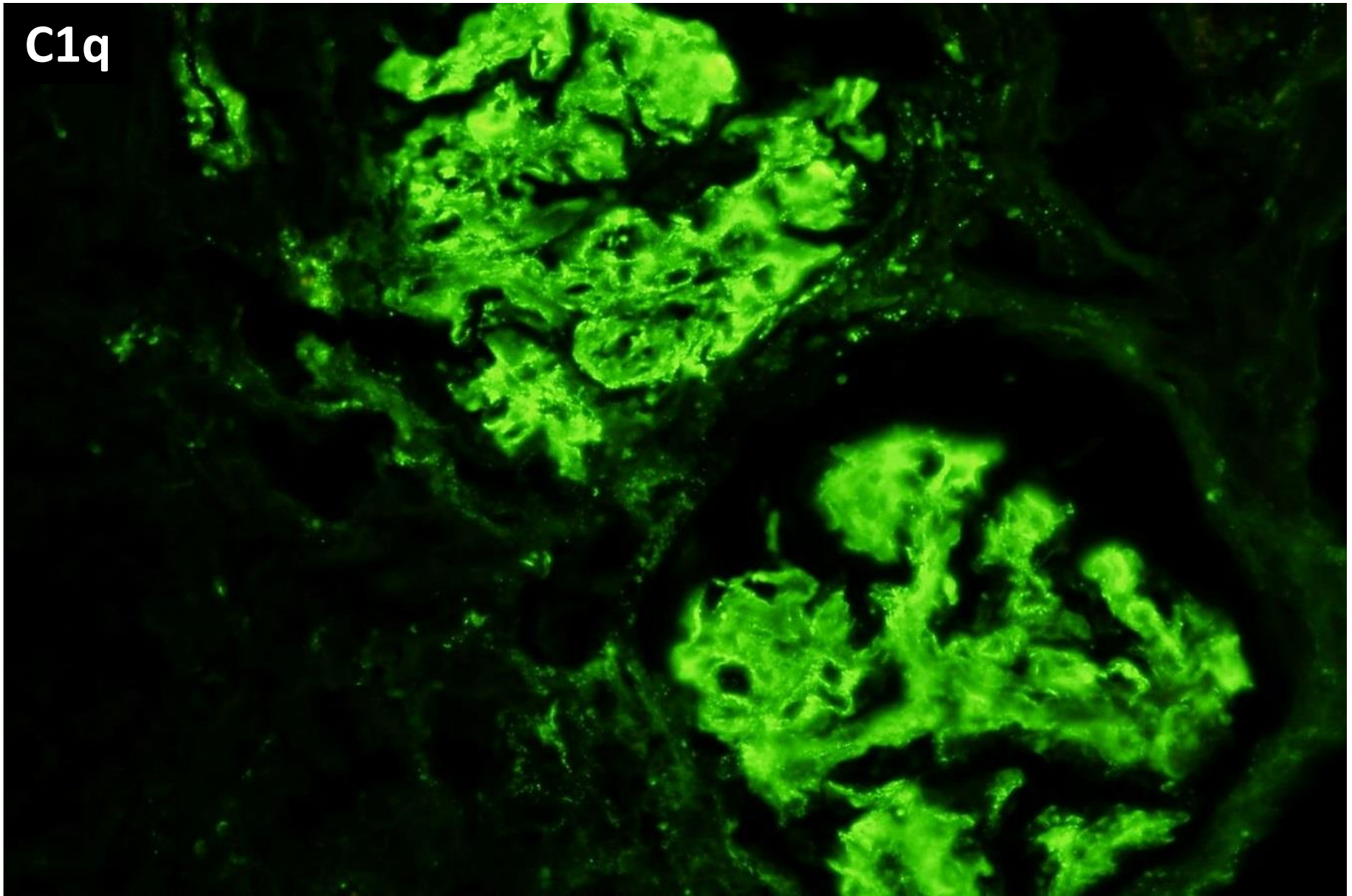


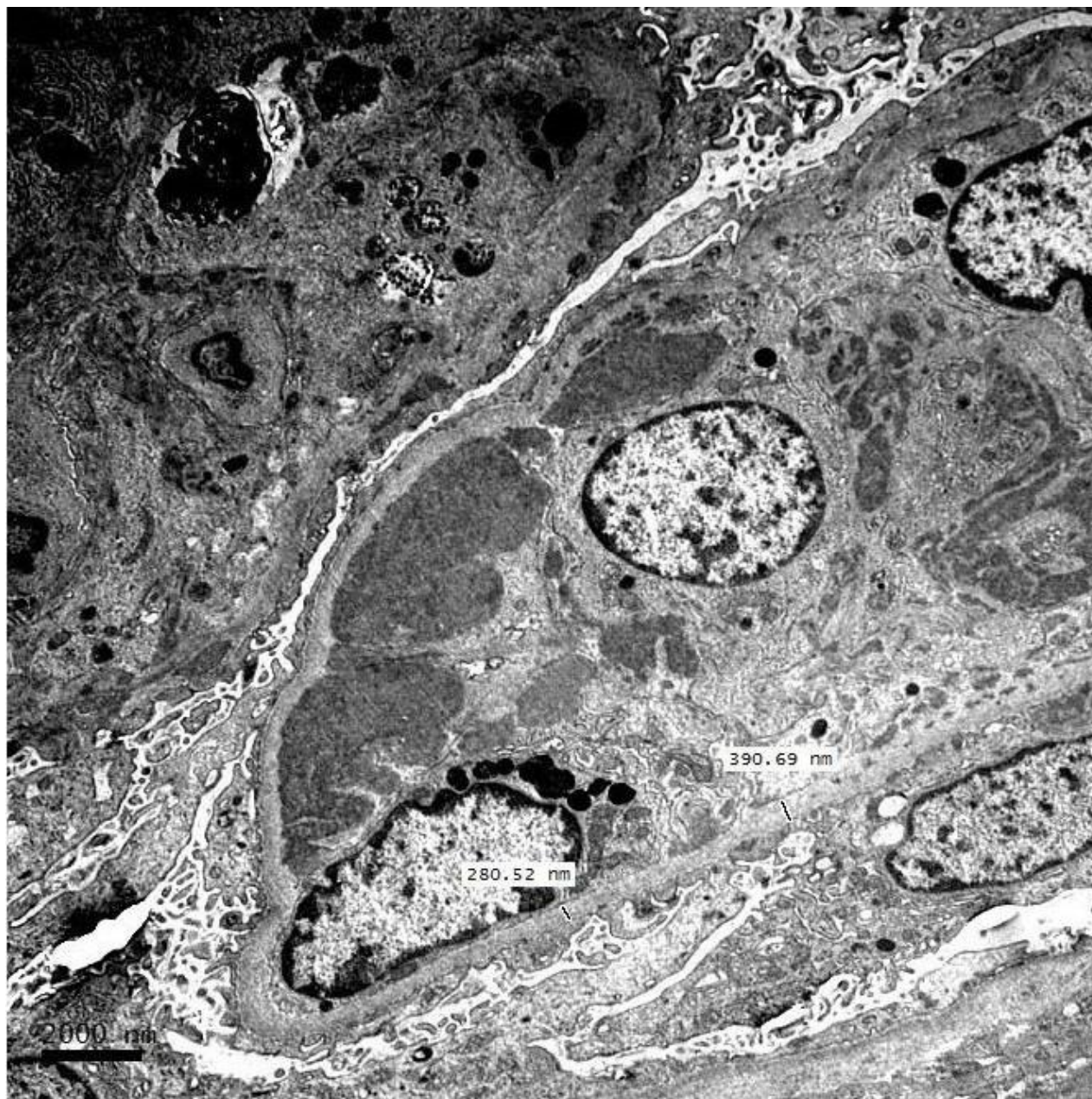
C3



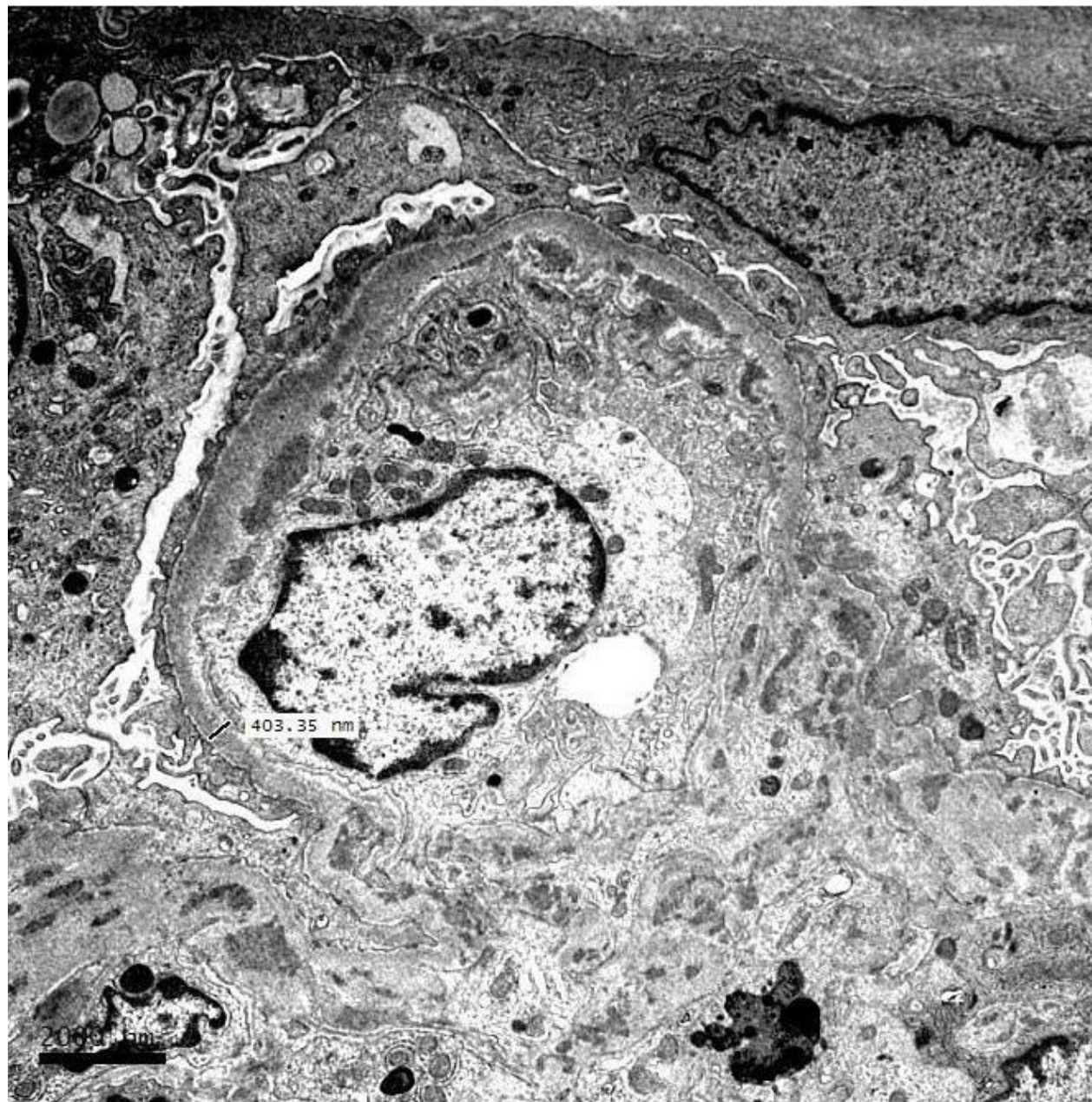


C1q

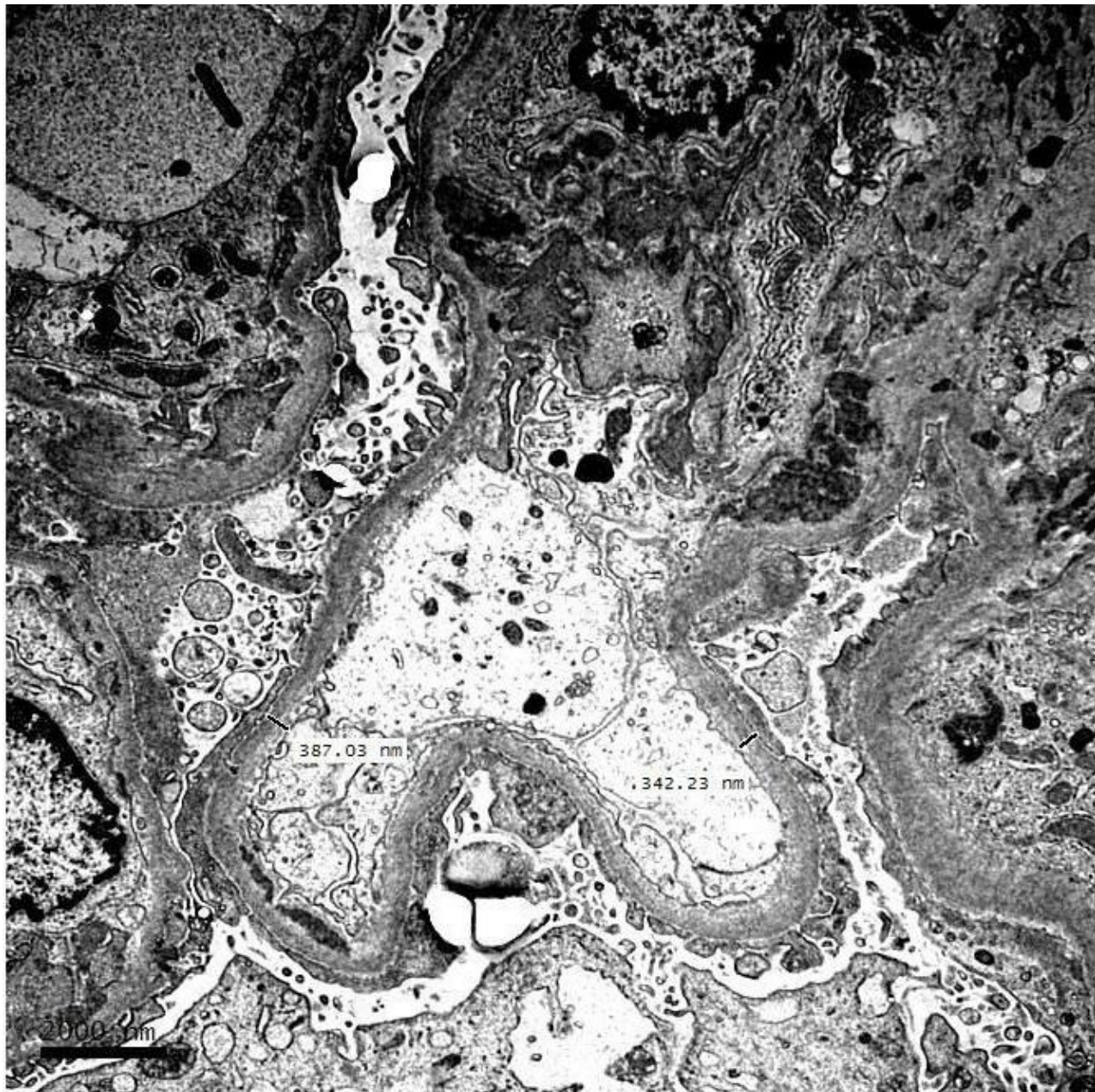




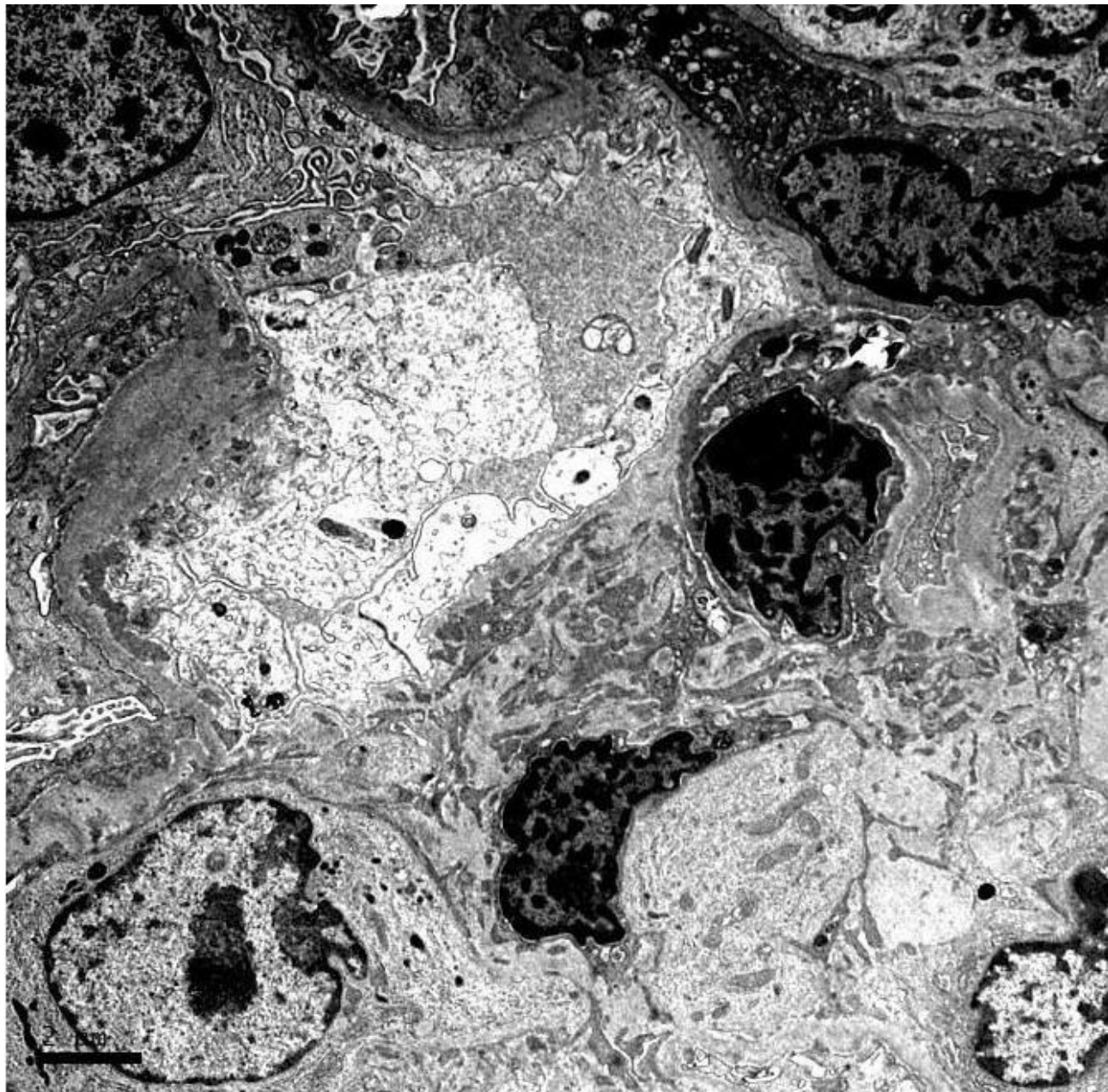


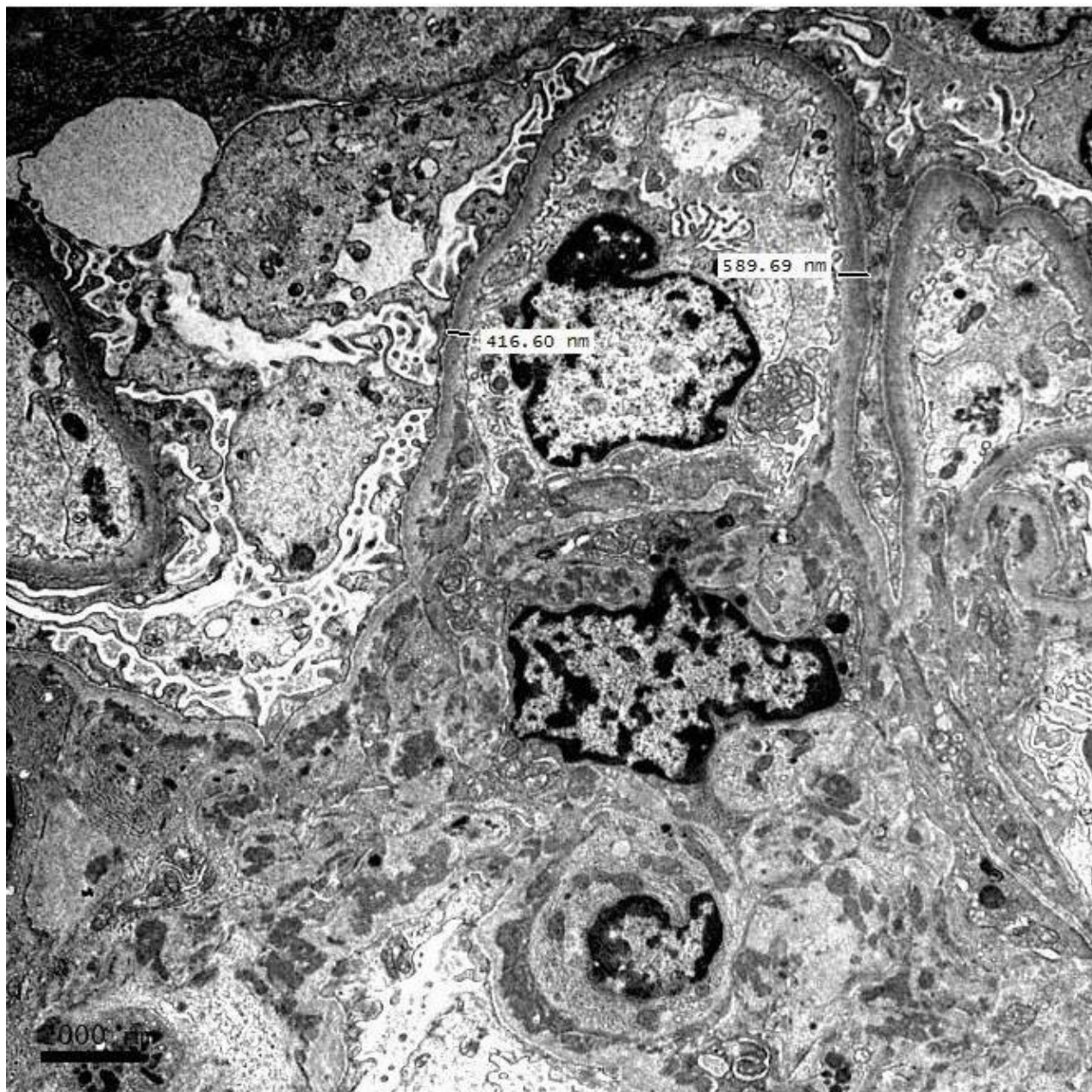




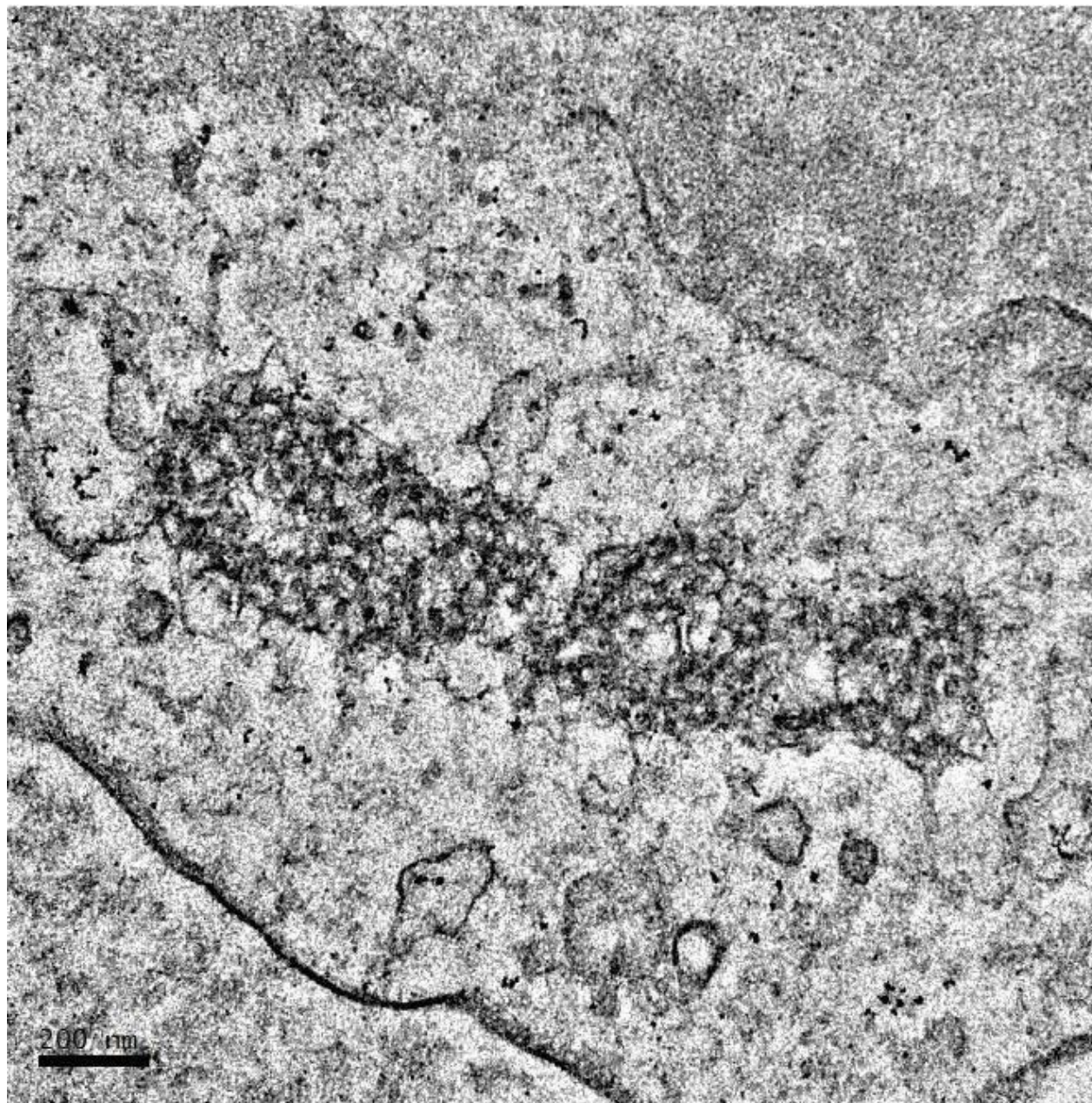
















# RENAL BIOPSY CLINICOPATHOLOGICAL WORKSHOP 2018

