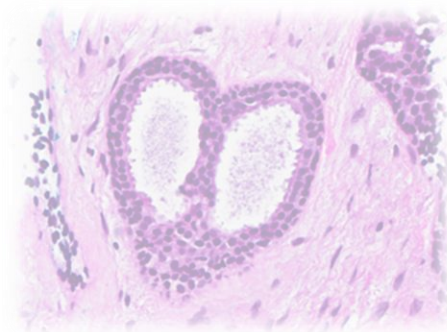
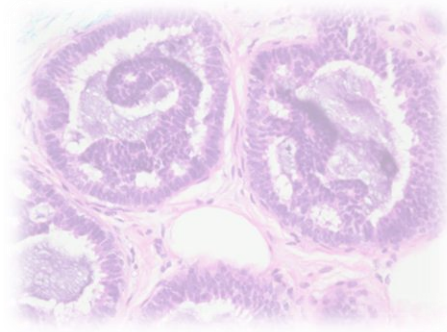
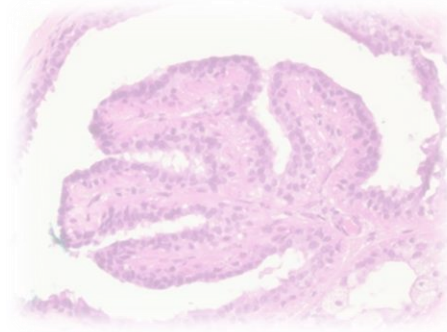
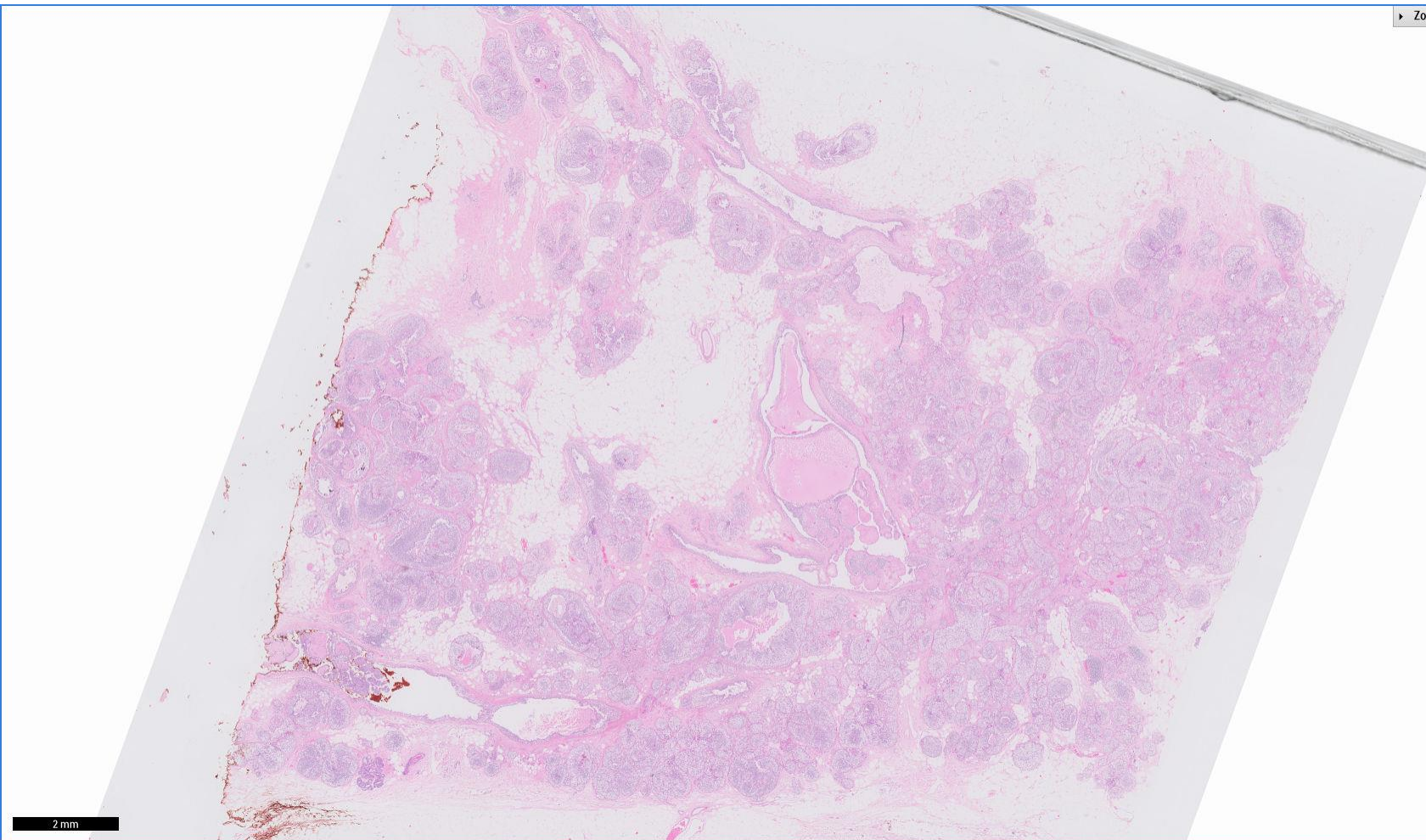
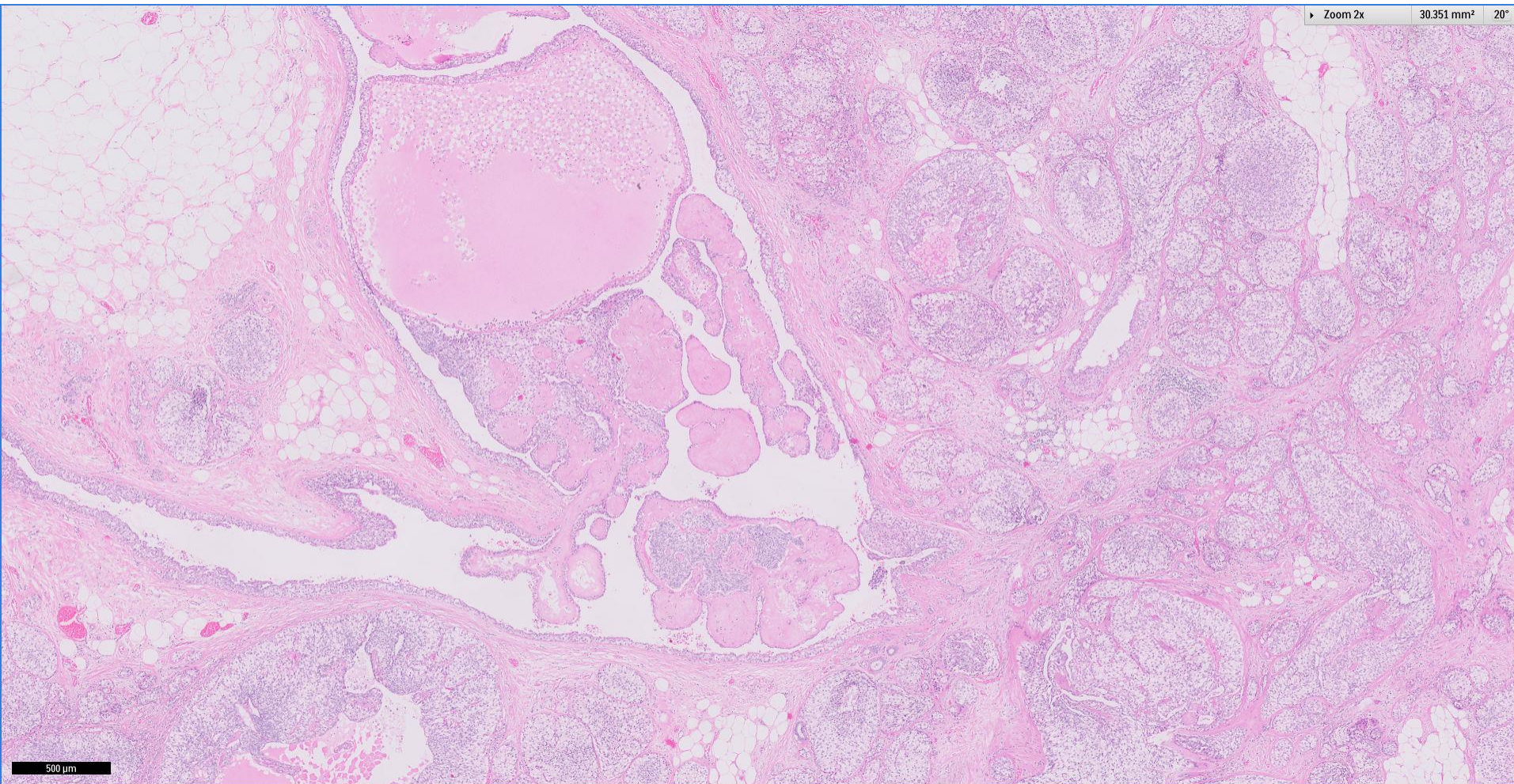


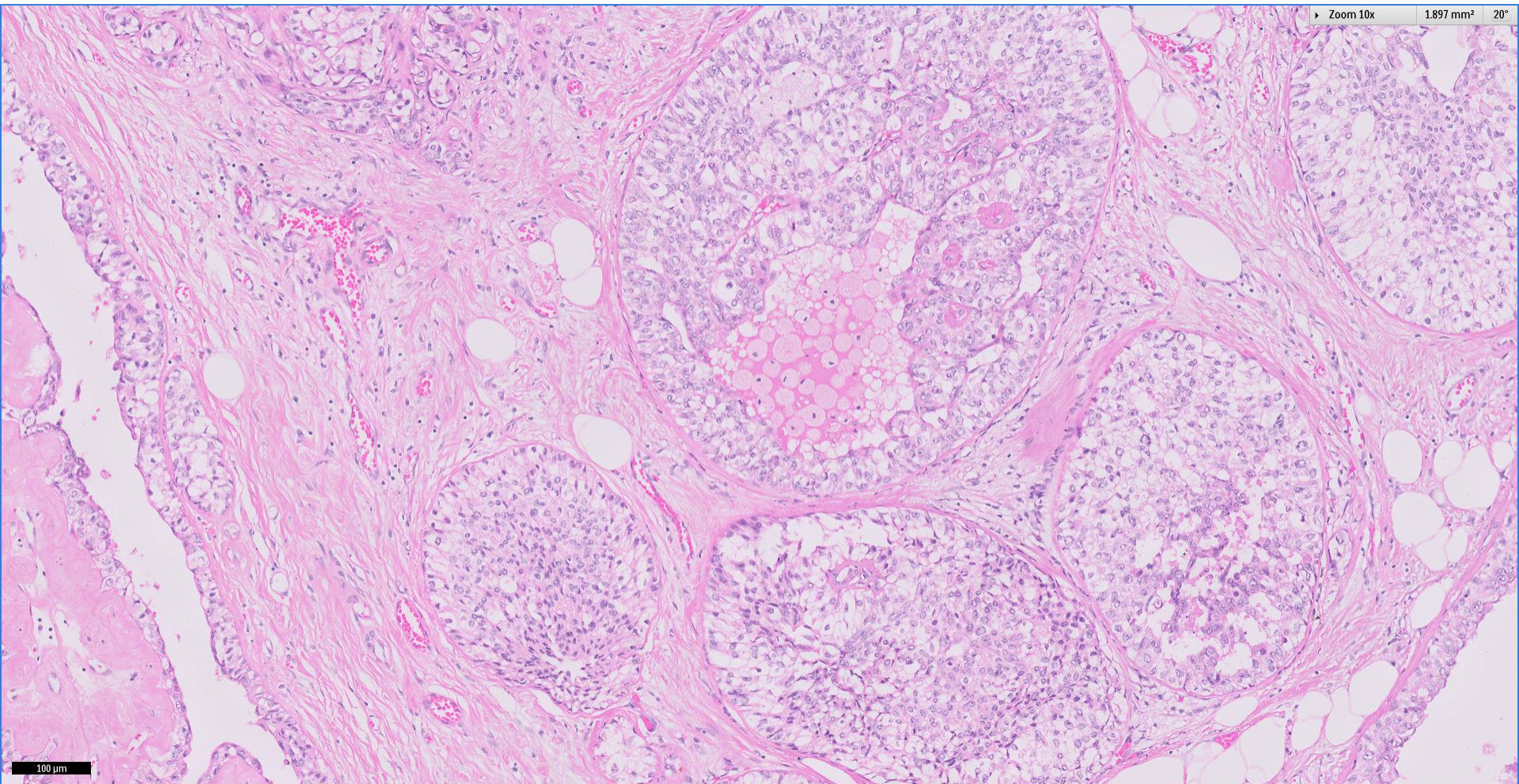
Case 14

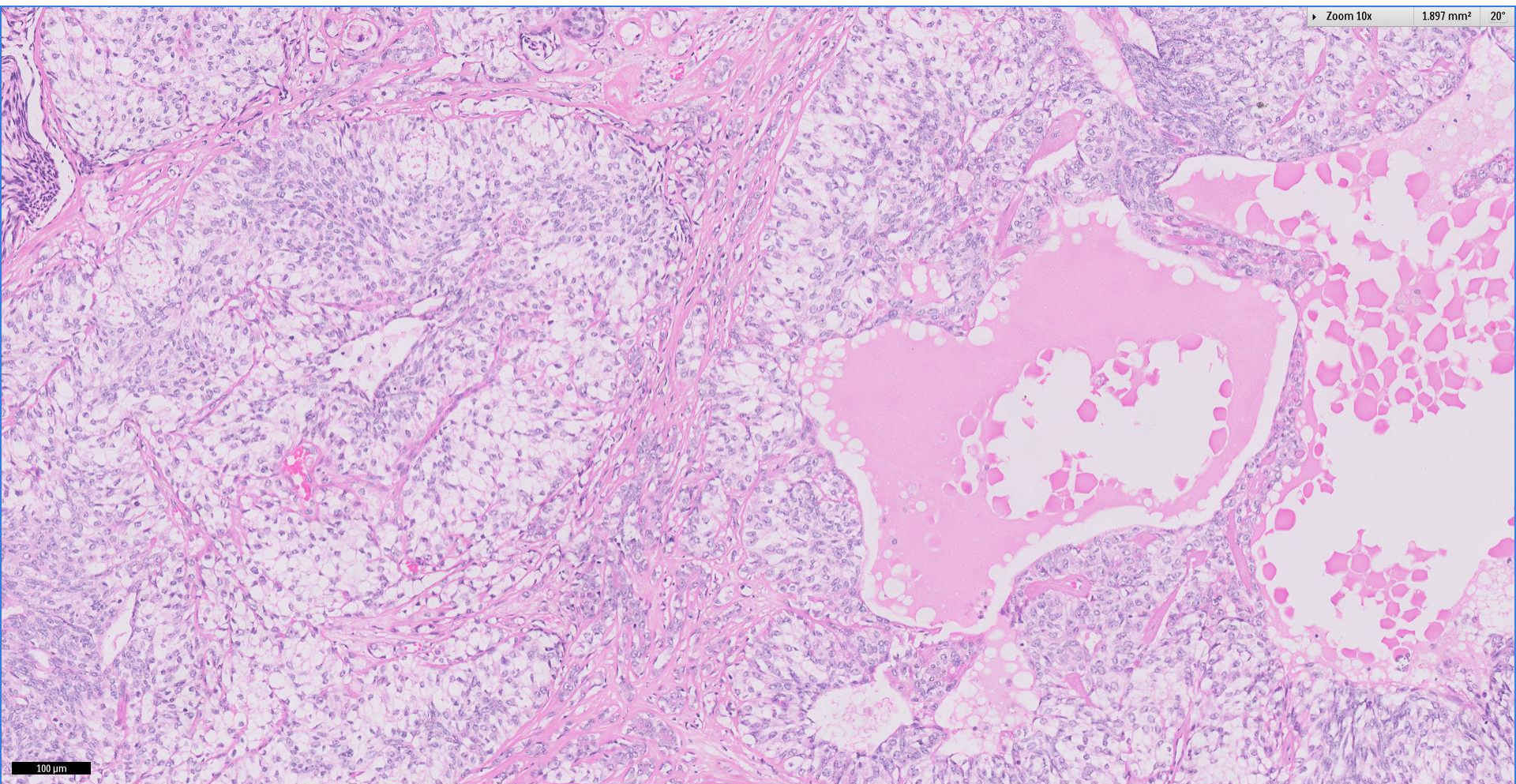
58 year old Chinese female.
Right breast, nipple sparing
mastectomy.

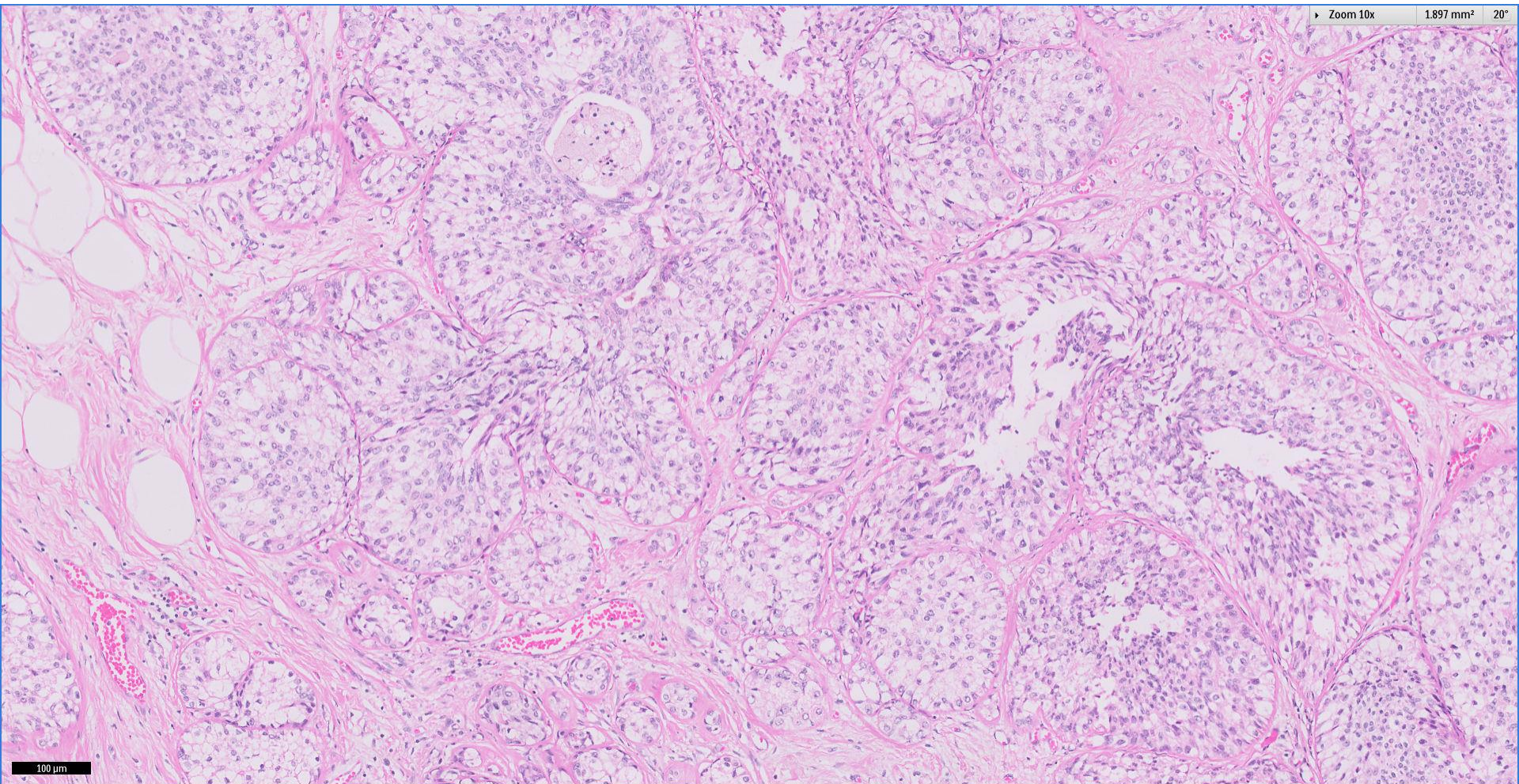


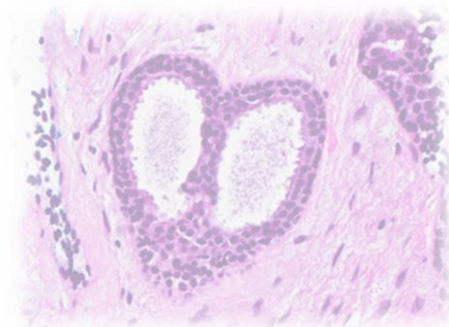
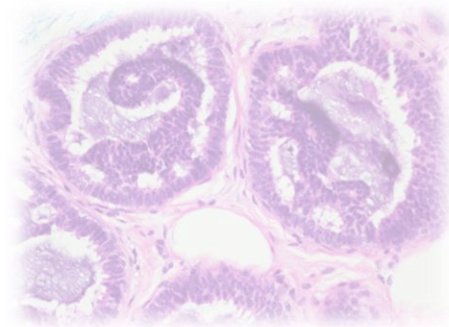
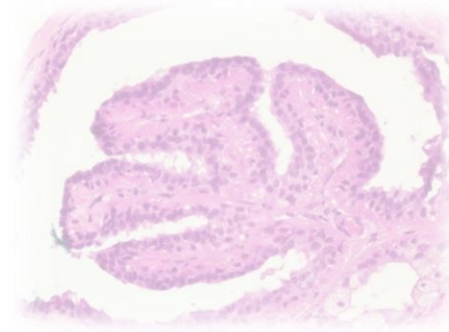








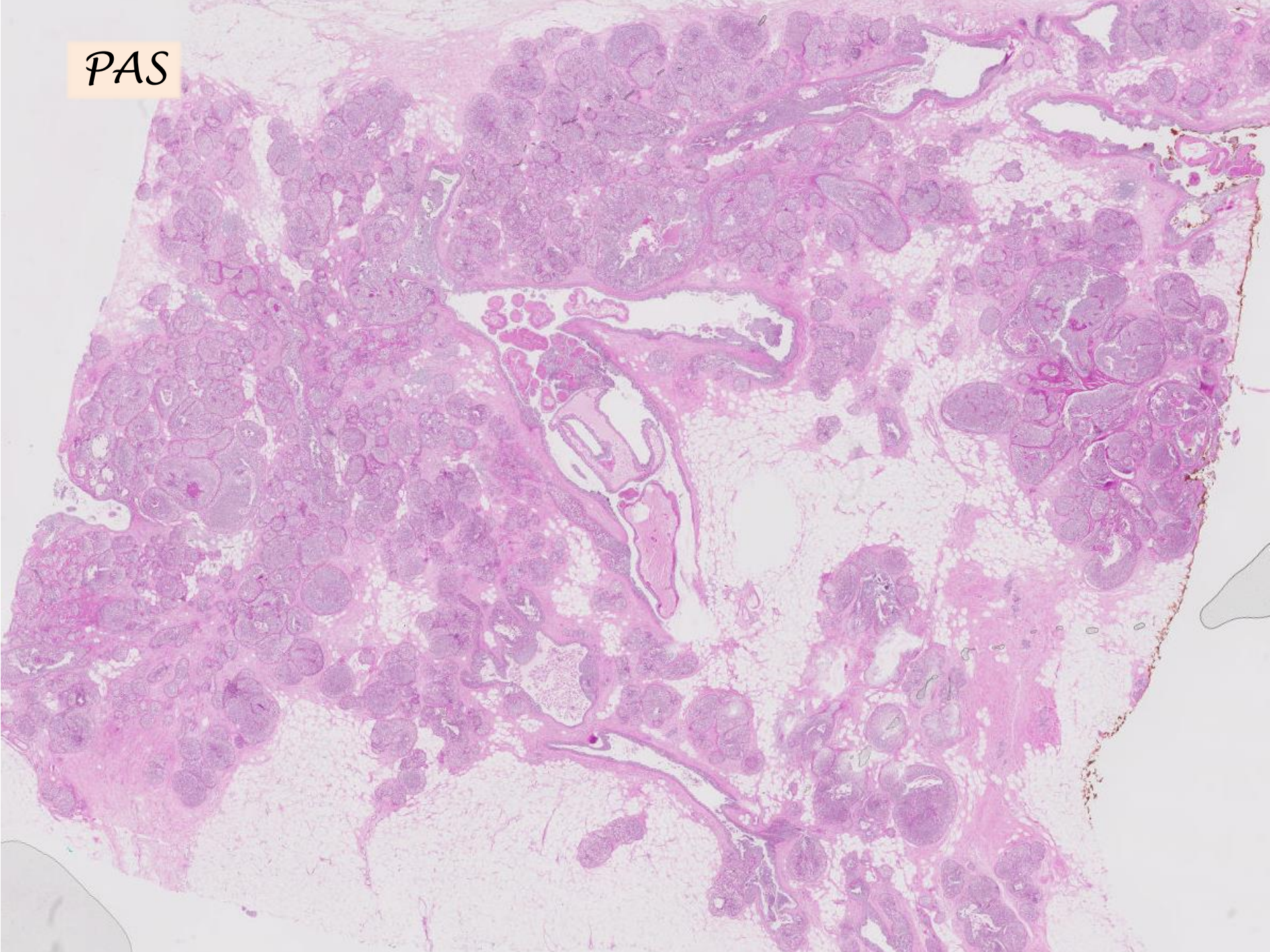




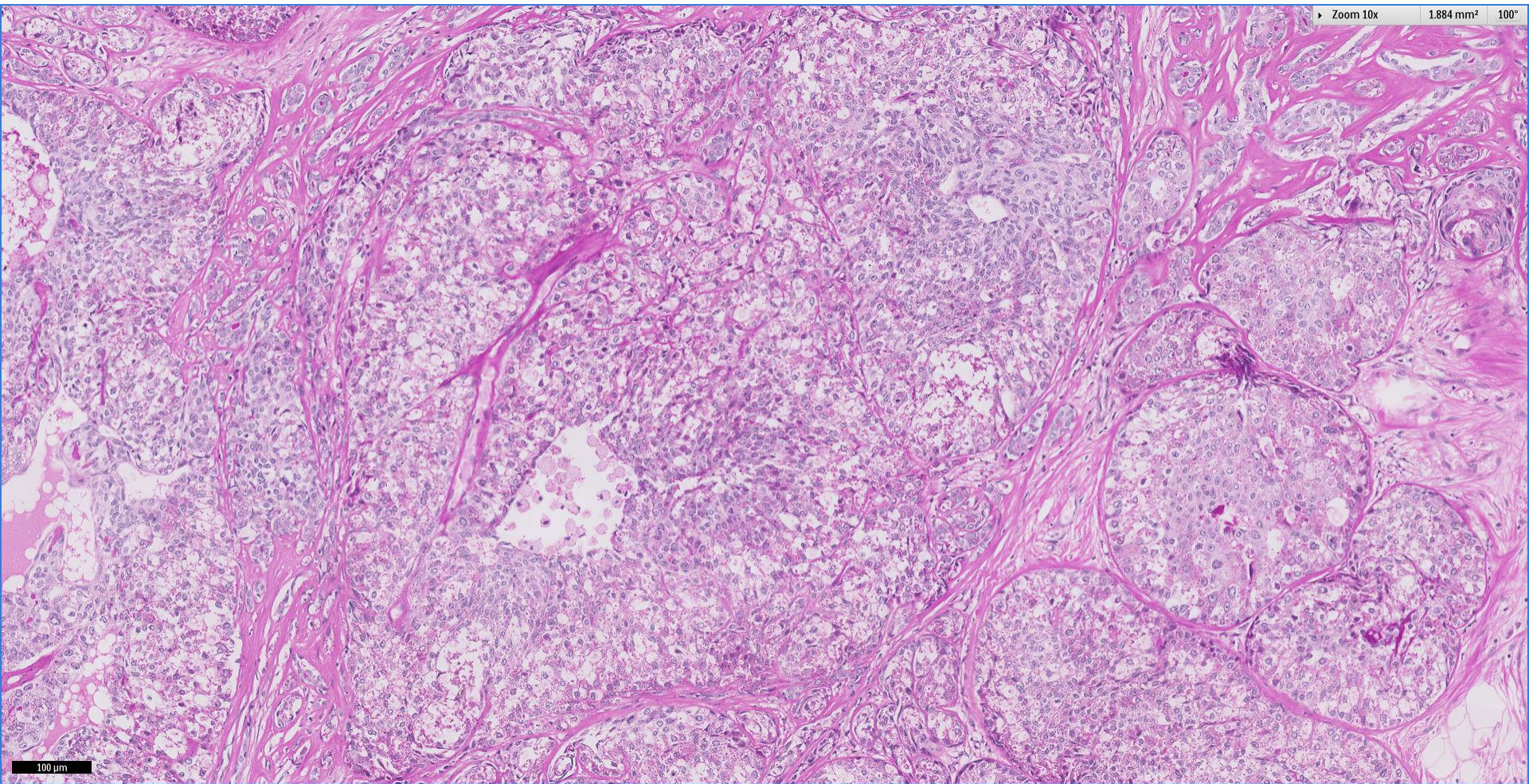
Additional pictures



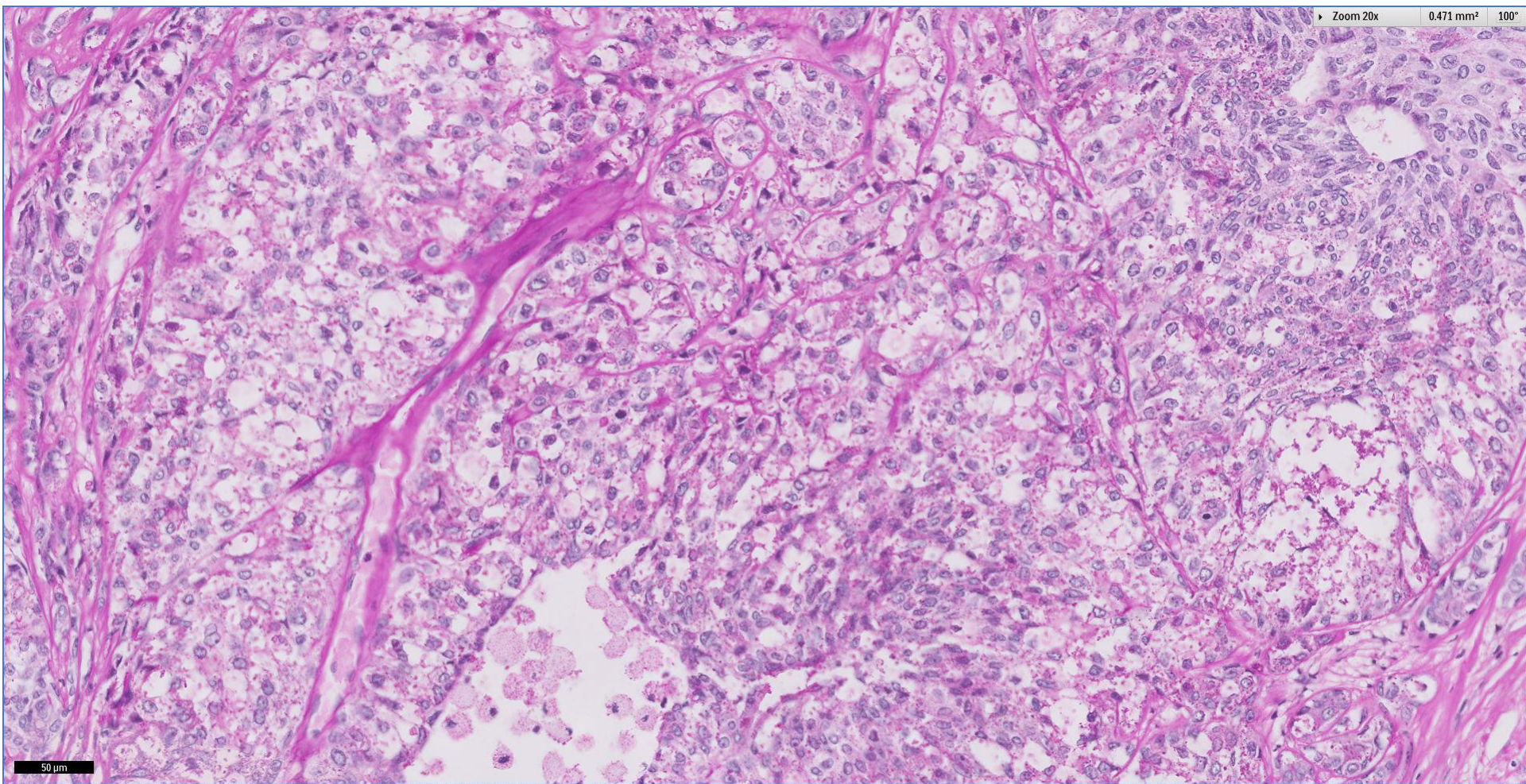
PAS



PAS



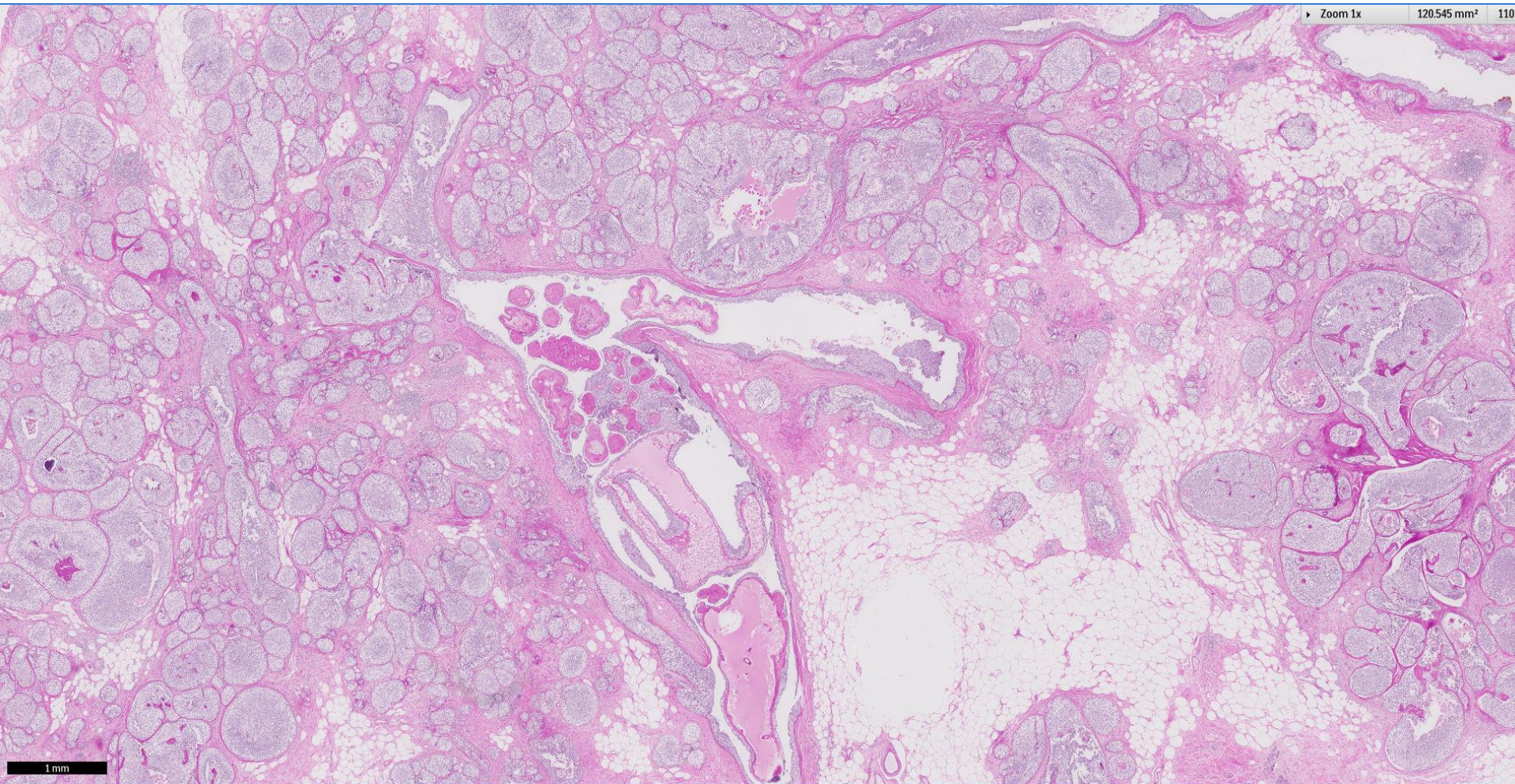
PAS



Division of Pathology
Singapore General Hospital



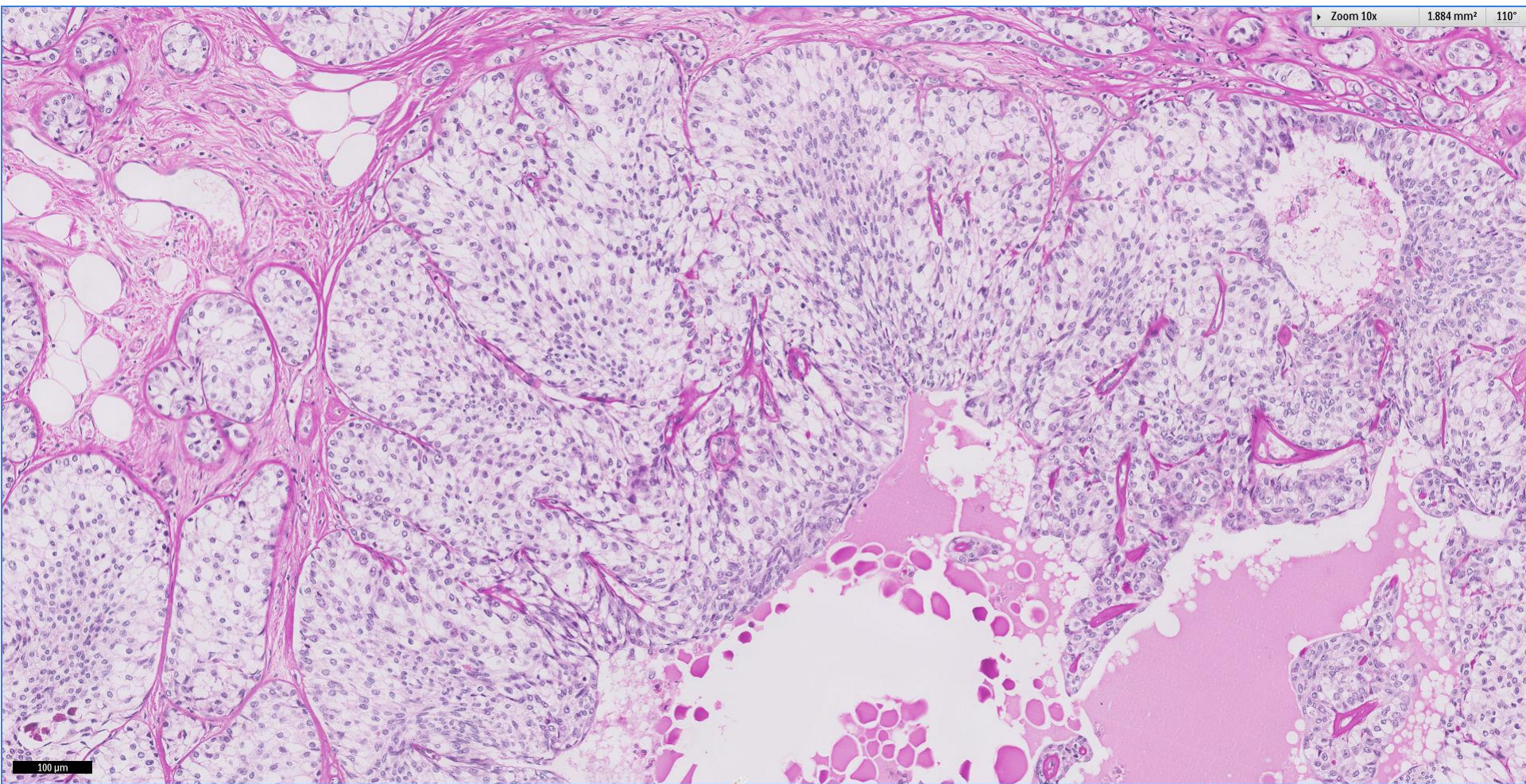
PASD



Division of Pathology
Singapore General Hospital



PASD



Division of Pathology
Singapore General Hospital

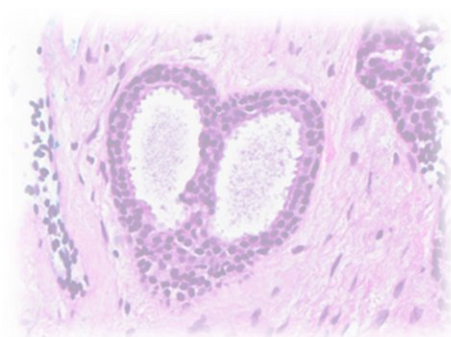
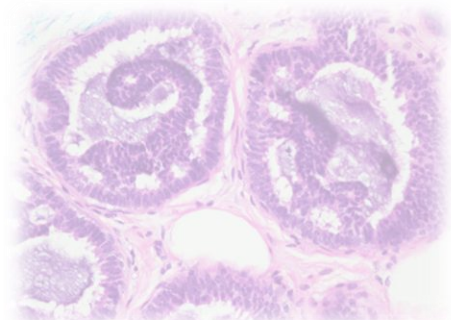
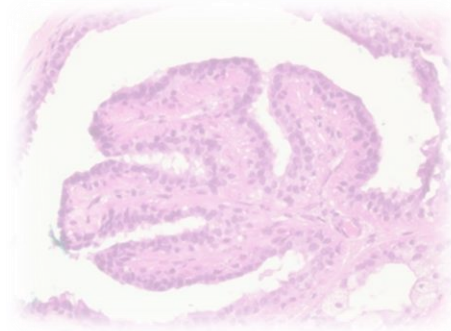


Diagnosis, case 14

- Right breast, nipple sparing mastectomy:

Ductal carcinoma in situ, intermediate nuclear grade, glycogen-rich clear cell variant, 60mm.

3 benign sentinel lymph nodes.



The Breast Journal, Volume 18 Number 3, 2012 279–280

Clear Cell Variant of Ductal Carcinoma in situ of the Breast

Tadashi Terada, MD, PhD

Department of Pathology, Shizuoka City Shimizu Hospital, Shizuoka, Japan

The DCIS showed solid, papillary, comedo, and cribriform patterns. The nuclear grade was intermediate (Fig. 2). The tumor cells were negative for glycogen, fat, and mucins. Immunohistochemically, the tumor cells expressed various cytokeratins (AE1/2, CAM5.2, 34 β E12, 5/6, 7, 8, 14, 18, and 19), synaptophysin (focal), KIT, CEA (luminal), CA125 (focal), MUC1, vimentin, ER, and PgR. Ki-67 labeling was 10%.

Clear cells in breast tumours

- Glycogen, mucin, lipid in the cell cytoplasm.
- Breast tumours that may show clear cells ~
 - Histiocytoid invasive lobular carcinoma
 - Apocrine carcinoma
 - Hidradenoma
 - Secretory carcinoma
 - Adenomyoepithelioma
 - Sebaceous carcinoma
 - Metastatic clear cell renal carcinoma

Thank You