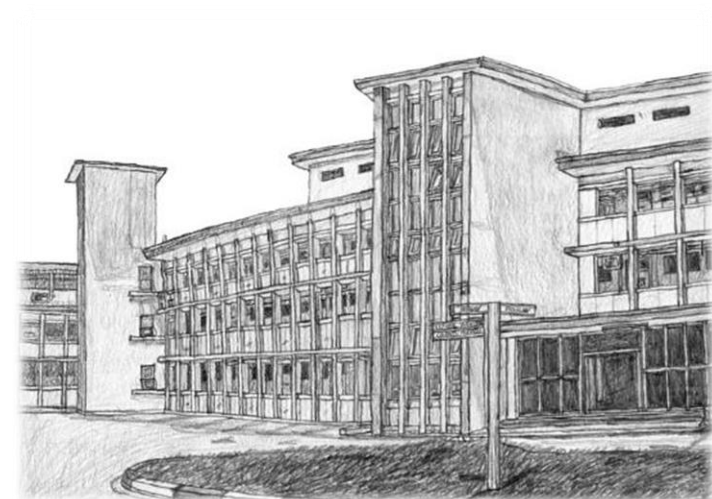
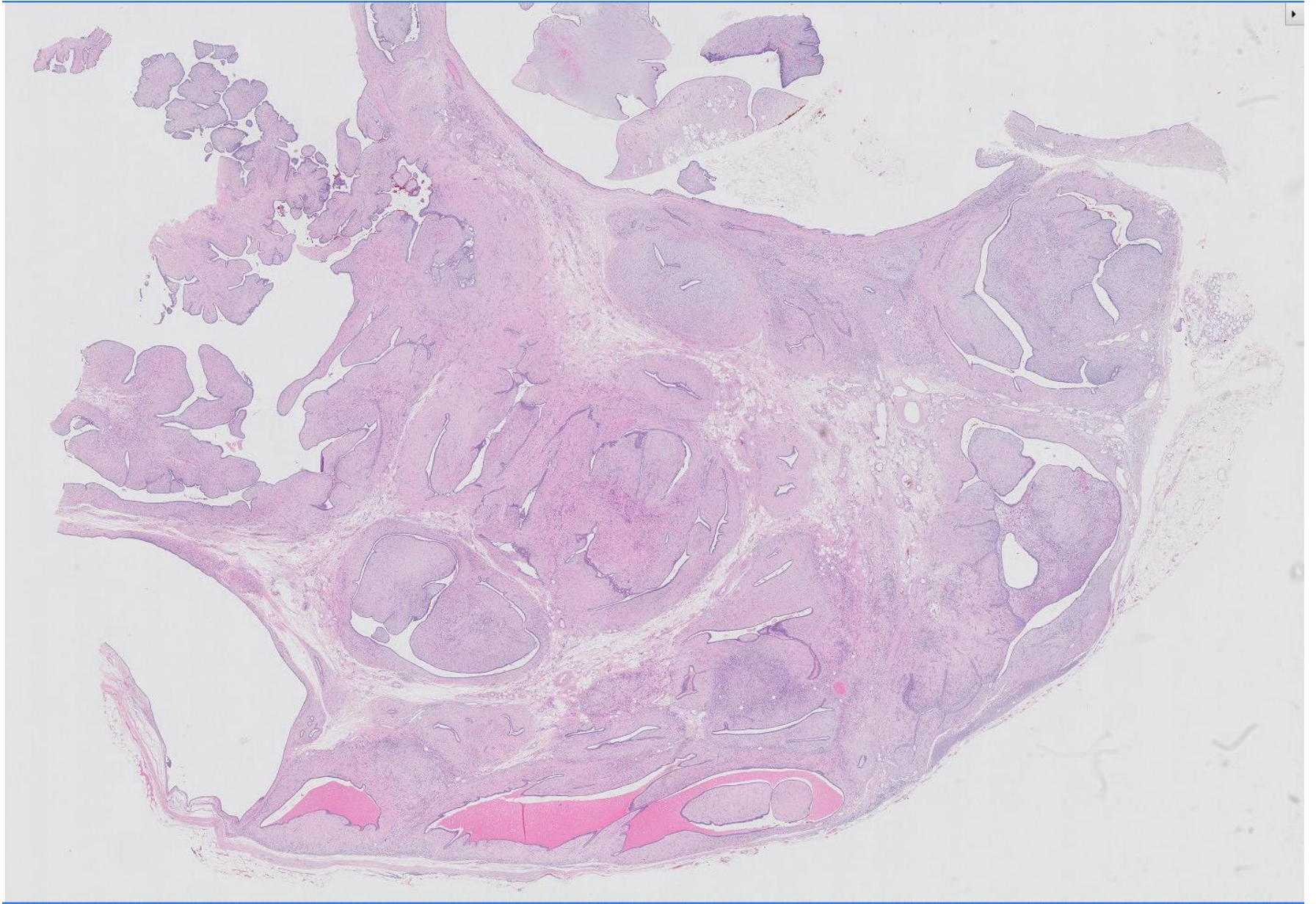


Case 12

53 year old female.
Large mass in the left breast.

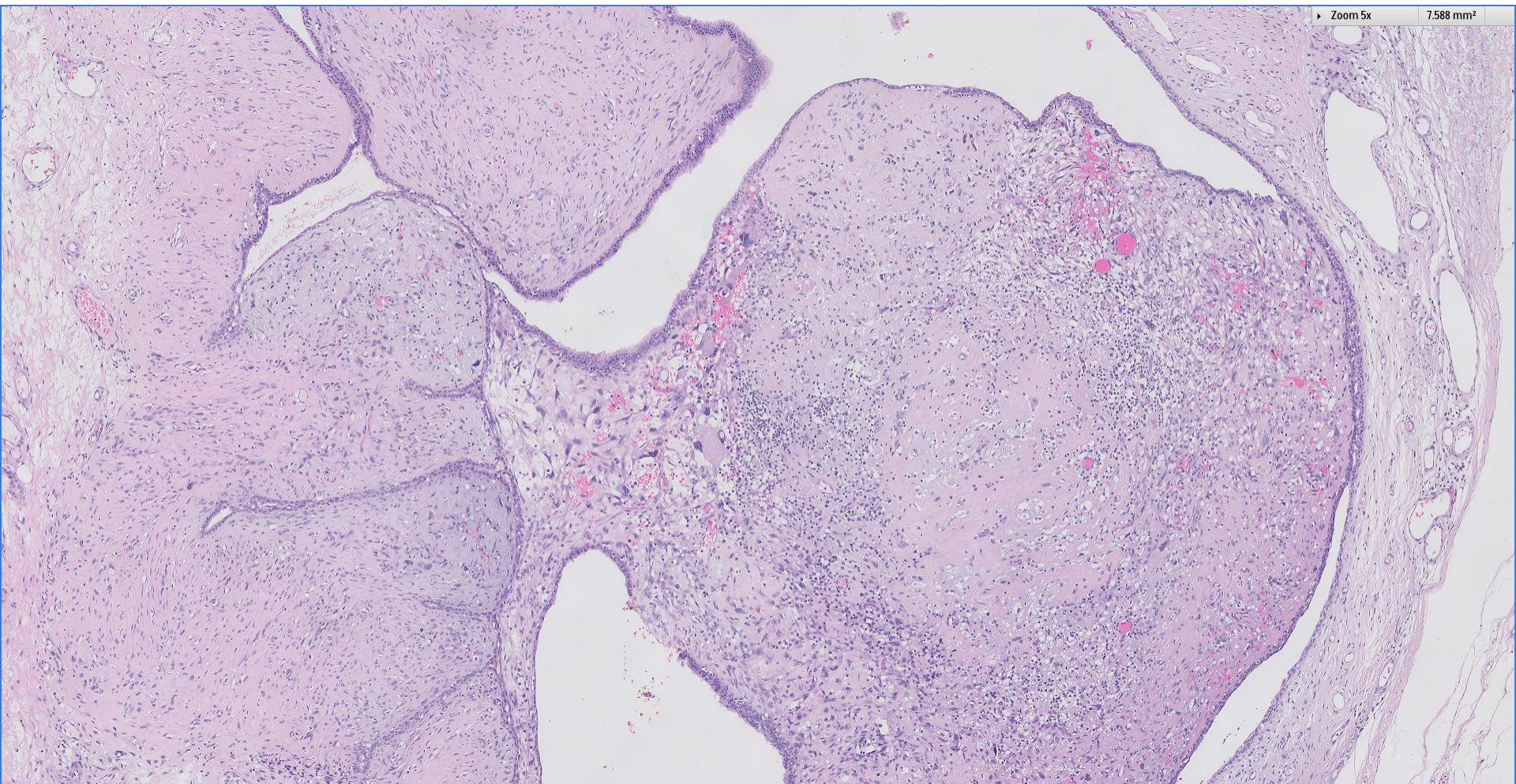
Case contributed by Dr Mihir Gudi, Singapore

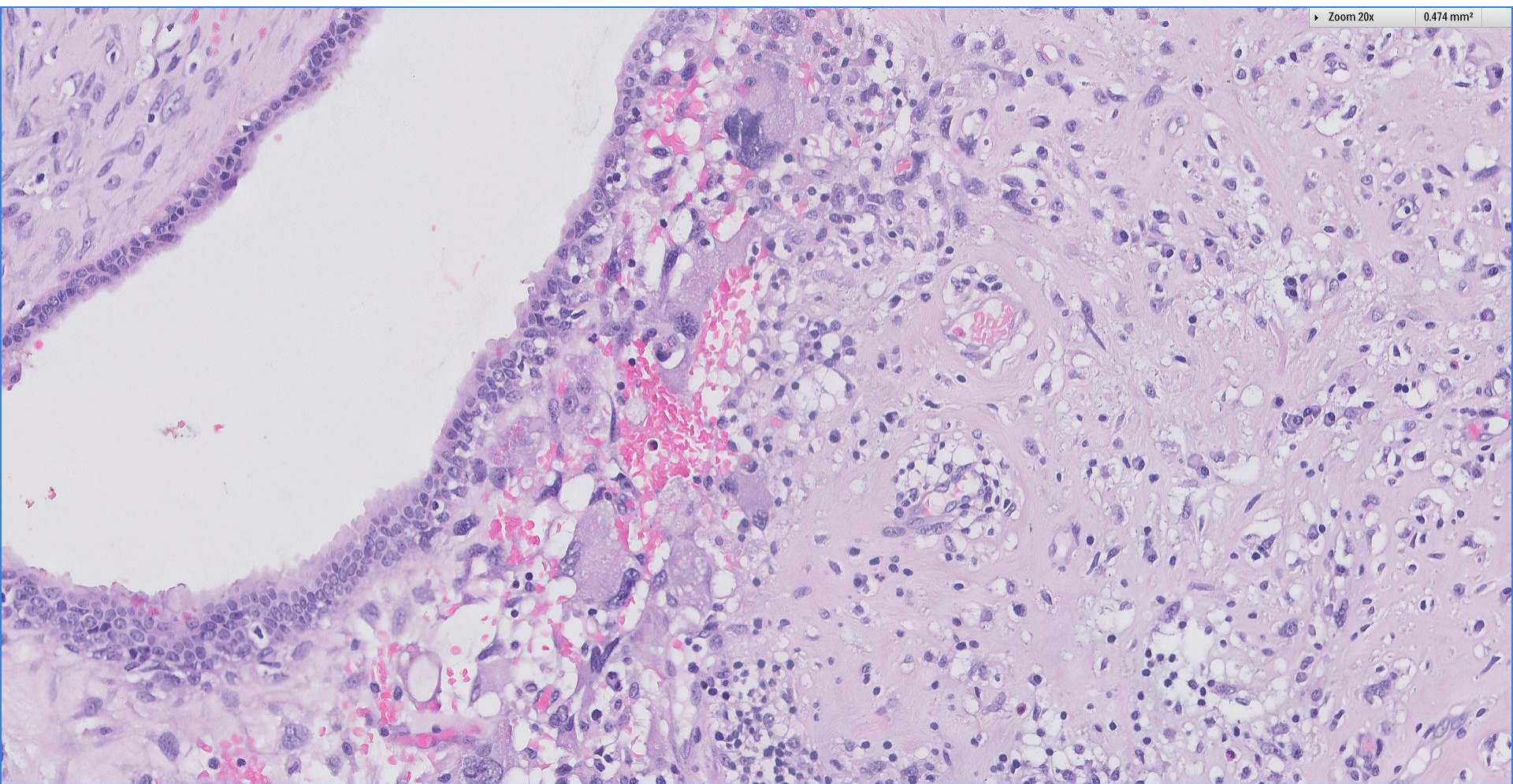




► Zoom 5x

7.588 mm²



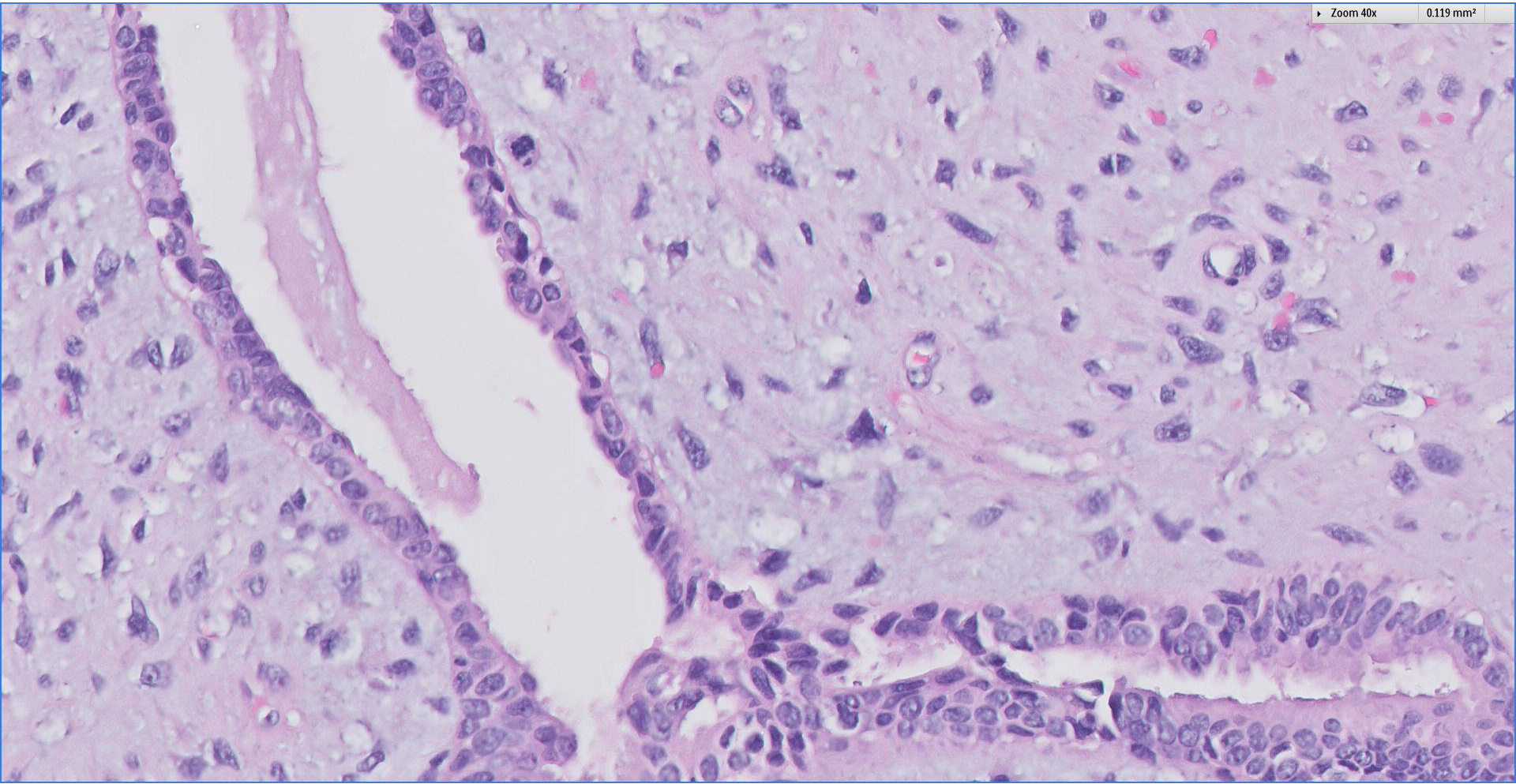


► Zoom 20x

0.474 mm²

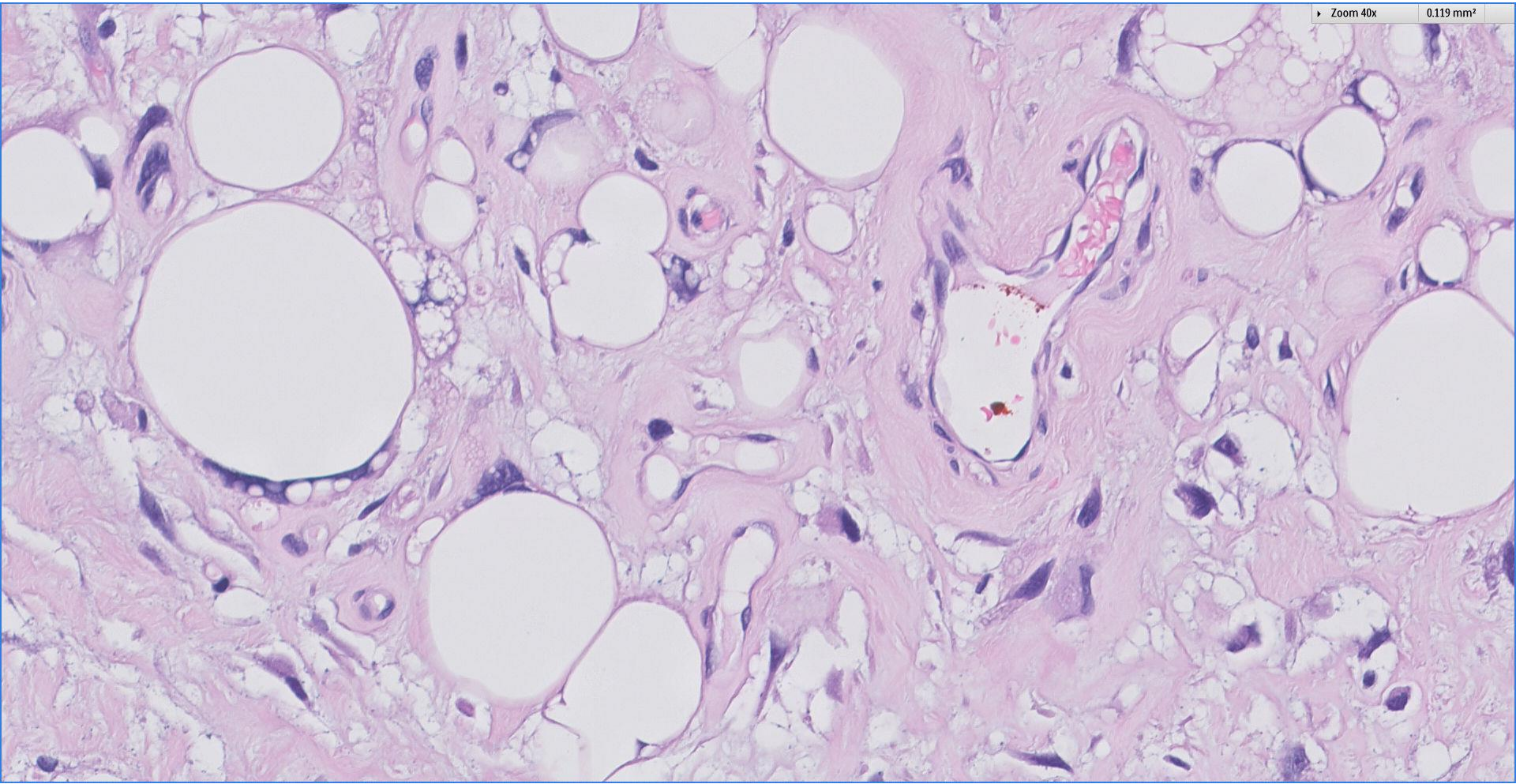
► Zoom 40x

0.119 mm²

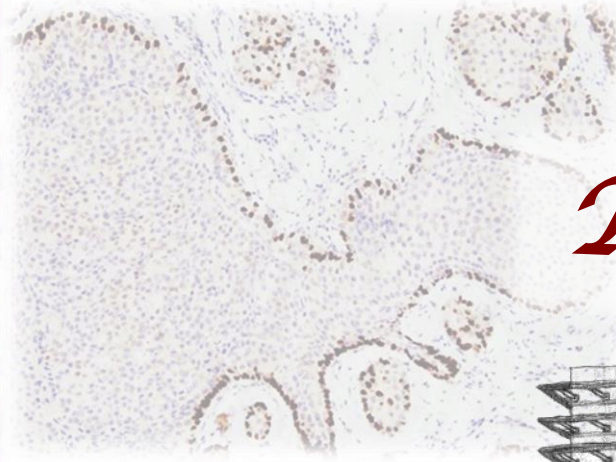
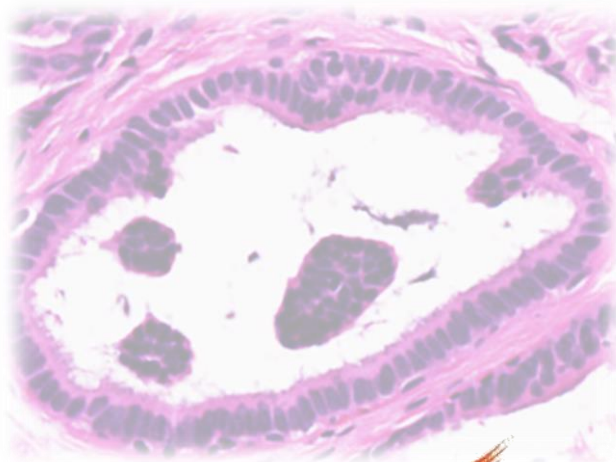
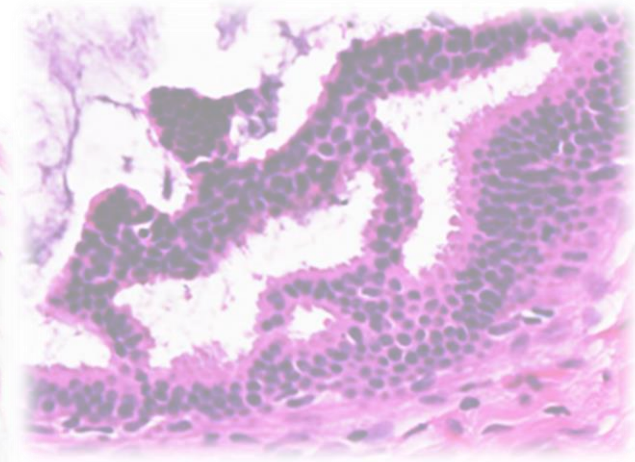
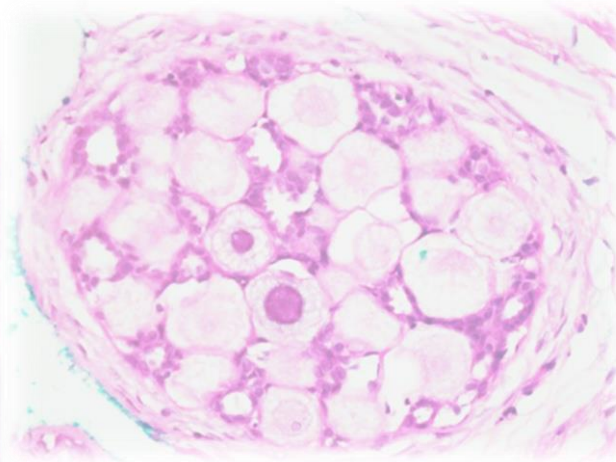
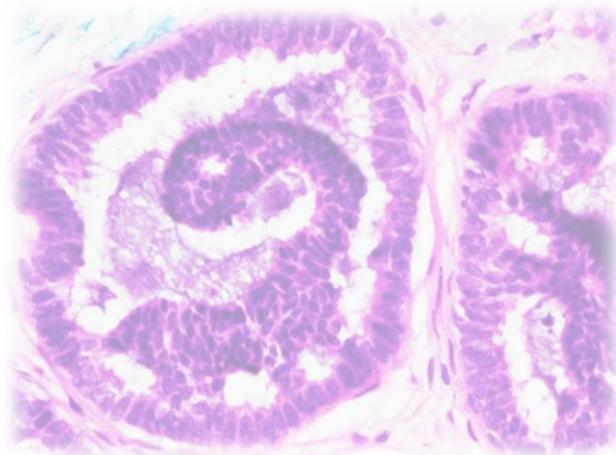


► Zoom 40x

0.119 mm²



 Breast
Pathology
Course 2018



Thank you!



Singapore
General Hospital
SingHealth
Division of Pathology


SingHealth DukeNUS
ACADEMIC MEDICAL CENTRE
PATHOLOGY

IAP

International Academy of Pathology
Singapore Division



THE ACADEMIA,
SINGAPORE GENERAL HOSPITAL

09.05.2014

Handwritten signature