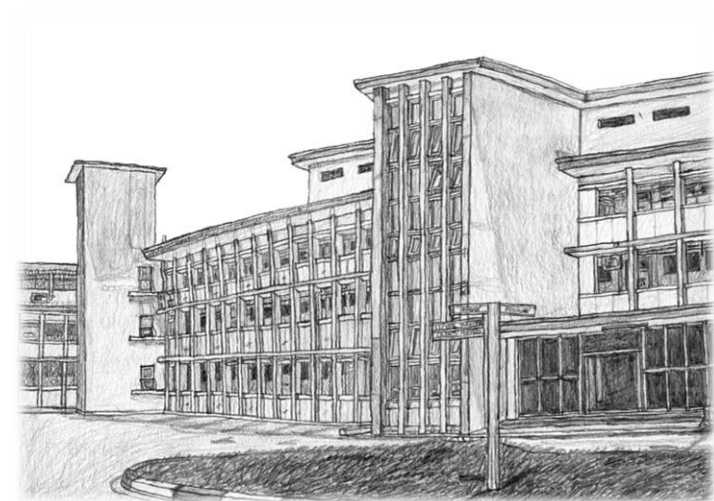
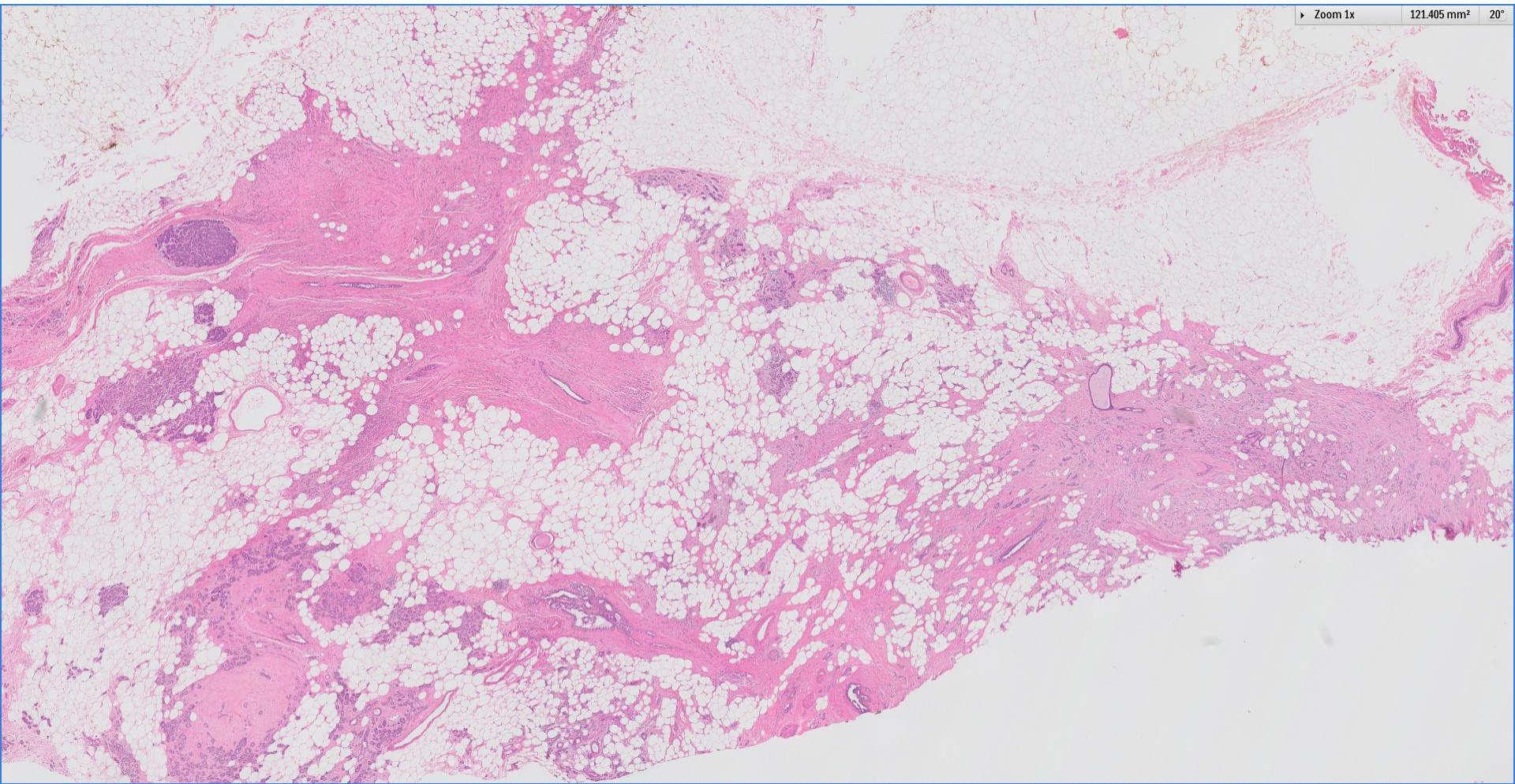
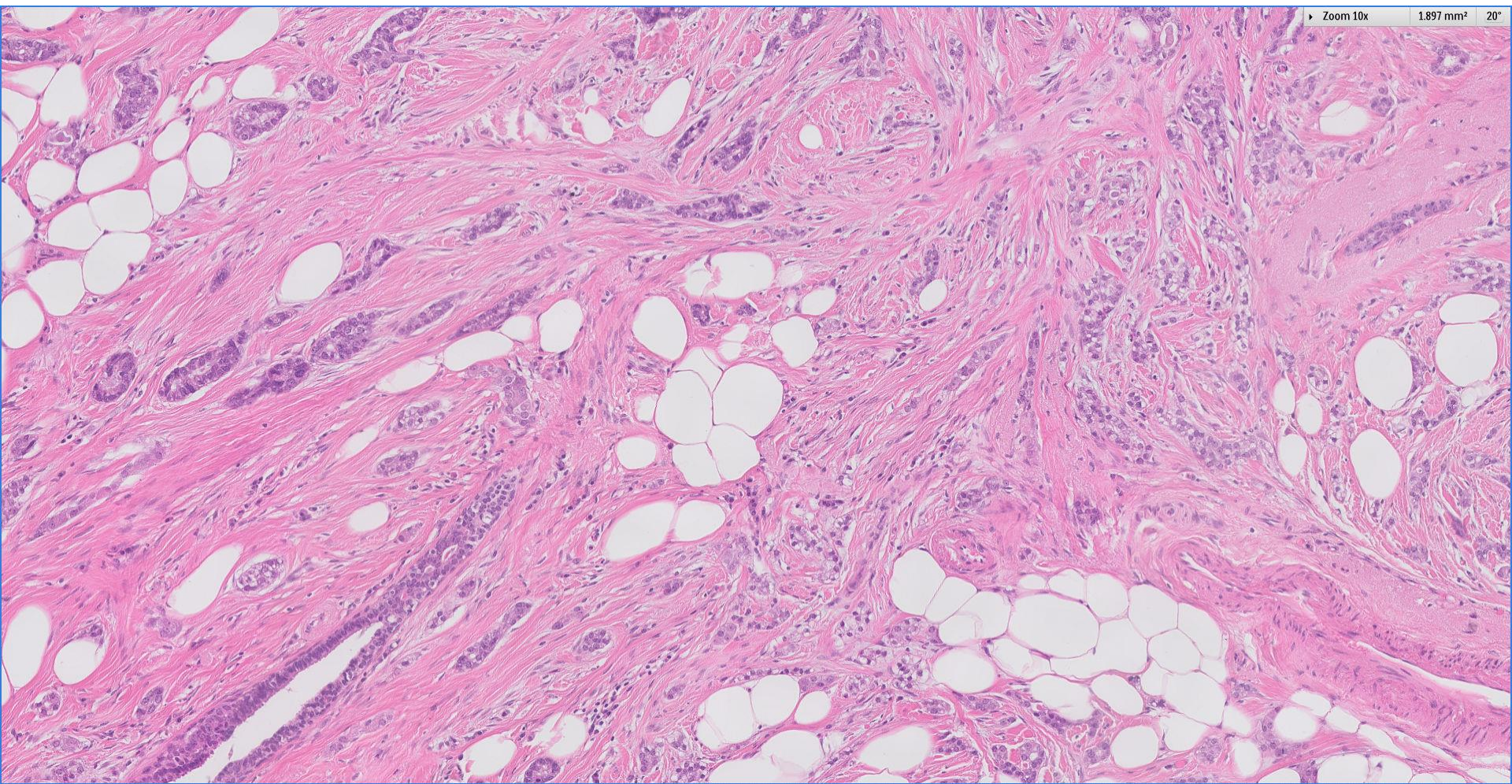


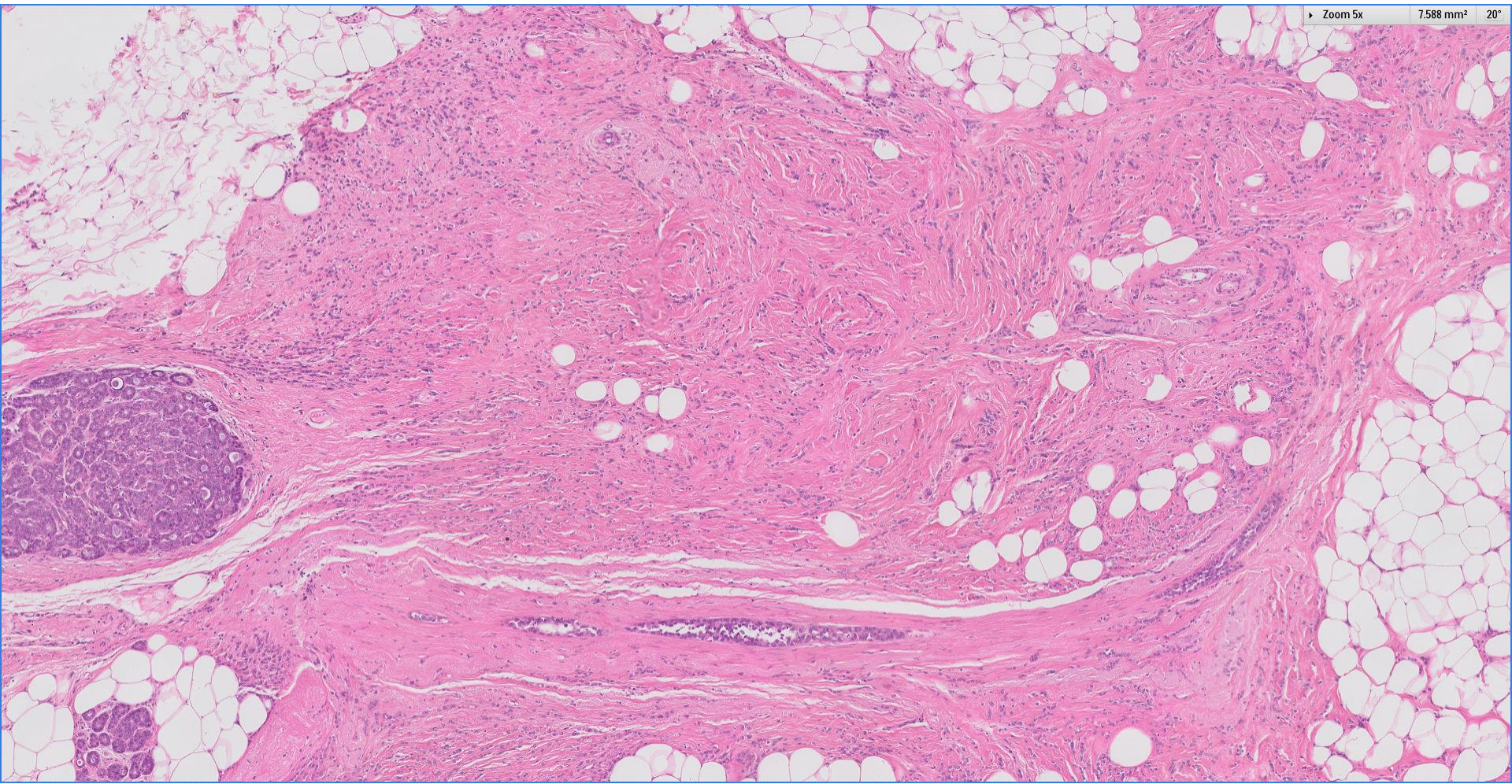
EP Case 6

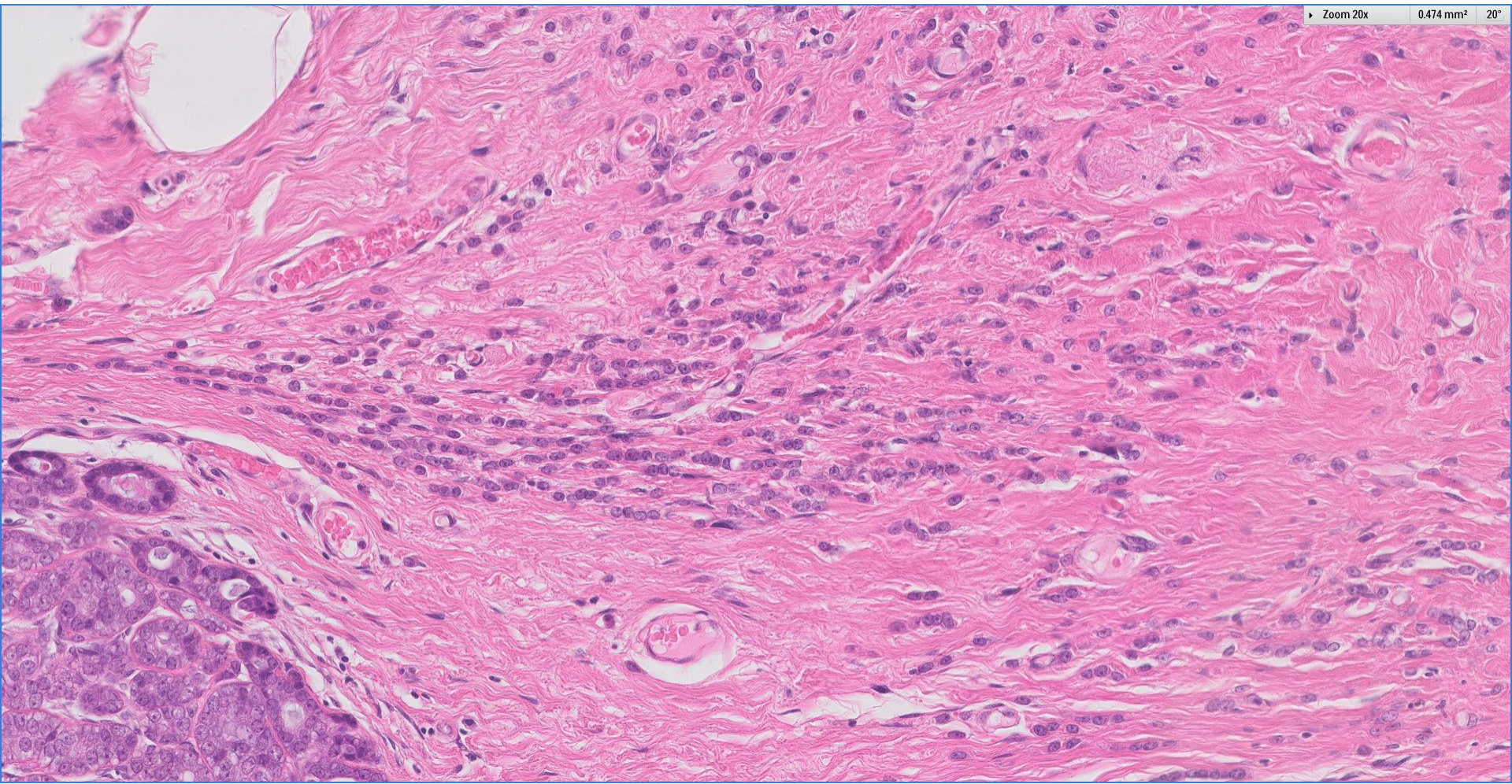
86 year old female. Right central breast mass, suspicious for malignancy on mammography and US.

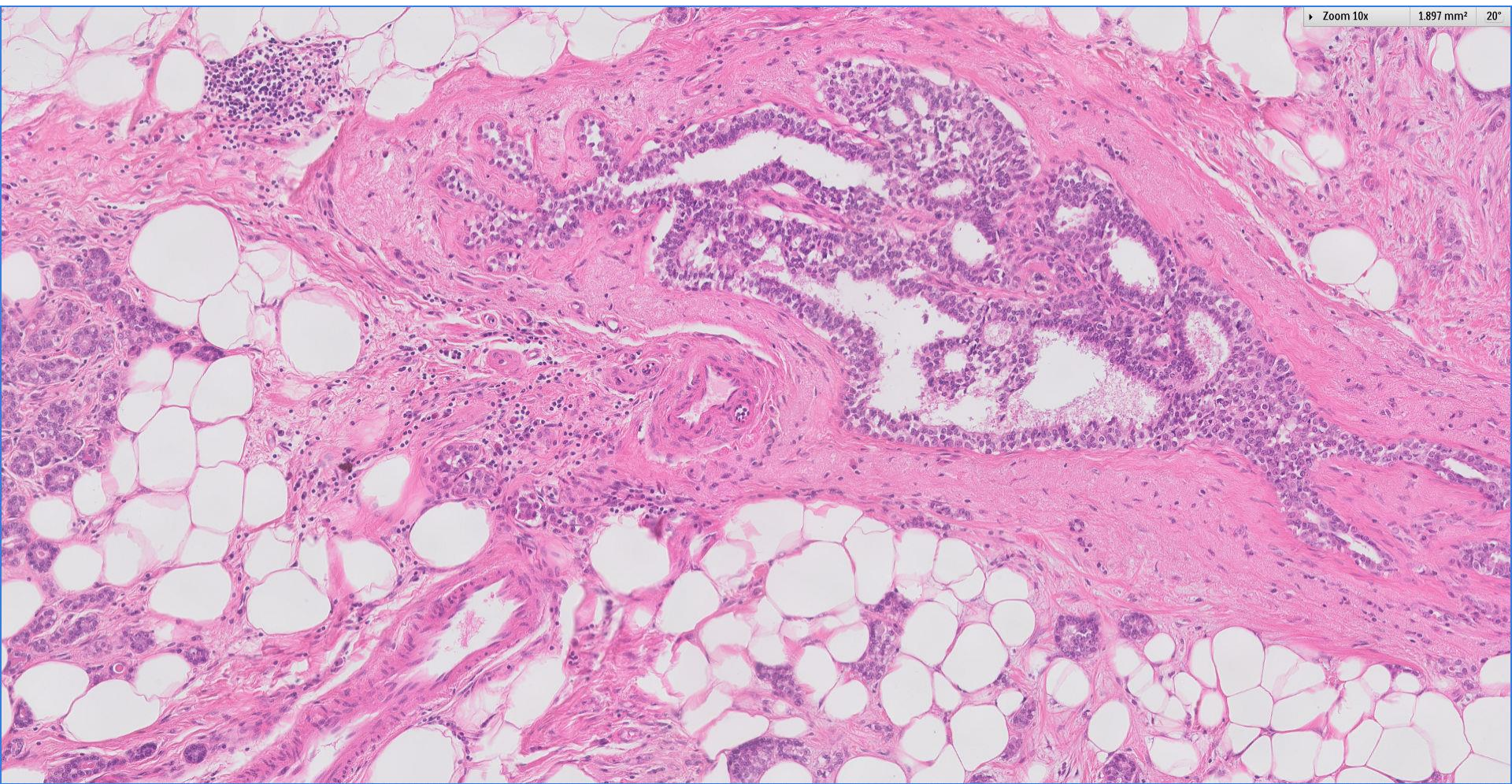




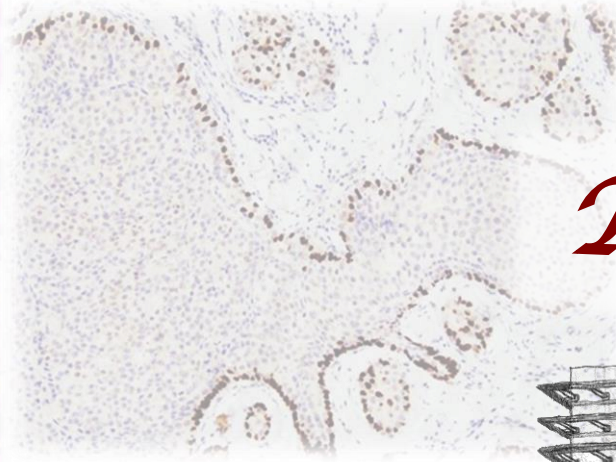
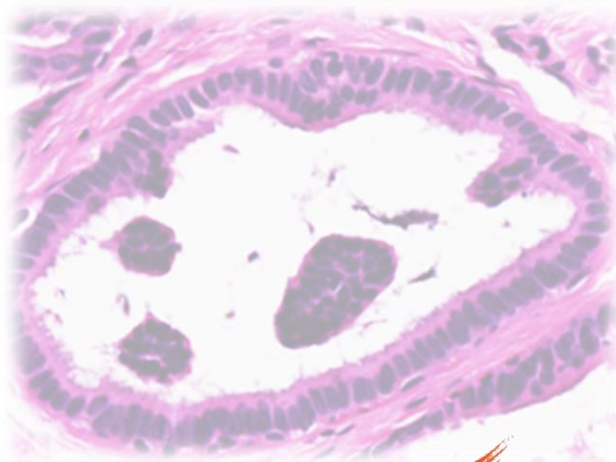
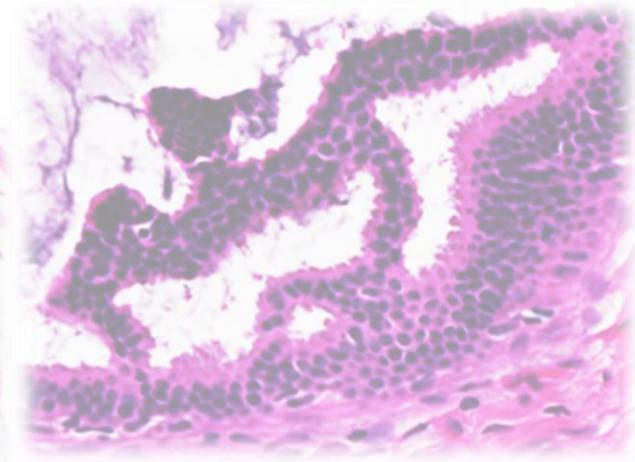
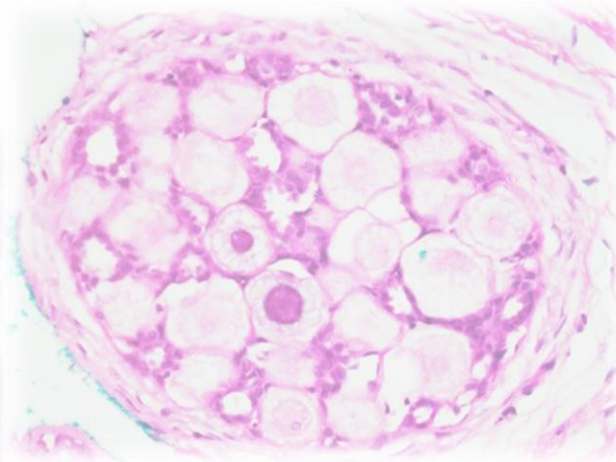
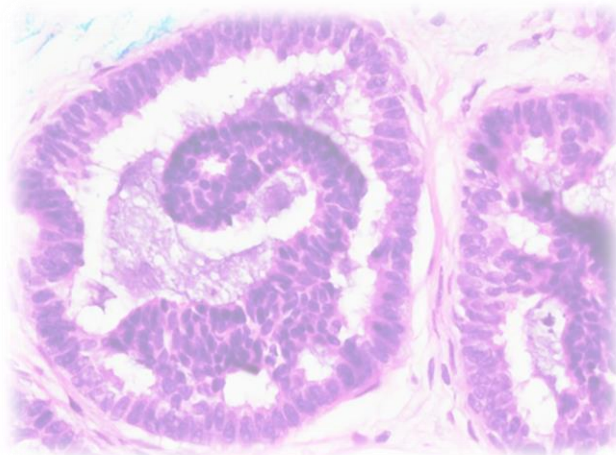








 Breast
Pathology
Course 2018



Thank you!



Singapore
General Hospital
SingHealth
Division of Pathology

 SingHealth DukeNUS
ACADEMIC MEDICAL CENTRE
PATHOLOGY

IAP
International Academy of Pathology
Singapore Division



THE ACADEMIA,
SINGAPORE GENERAL HOSPITAL

09.05.2014

h2