

Case 23

54 year old Chinese woman.

Right breast mastectomy and sentinel lymph node biopsy.

Section from the right upper outer quadrant tumour,
measuring 2.5cm in size.



Singapore
General Hospital

SingHealth

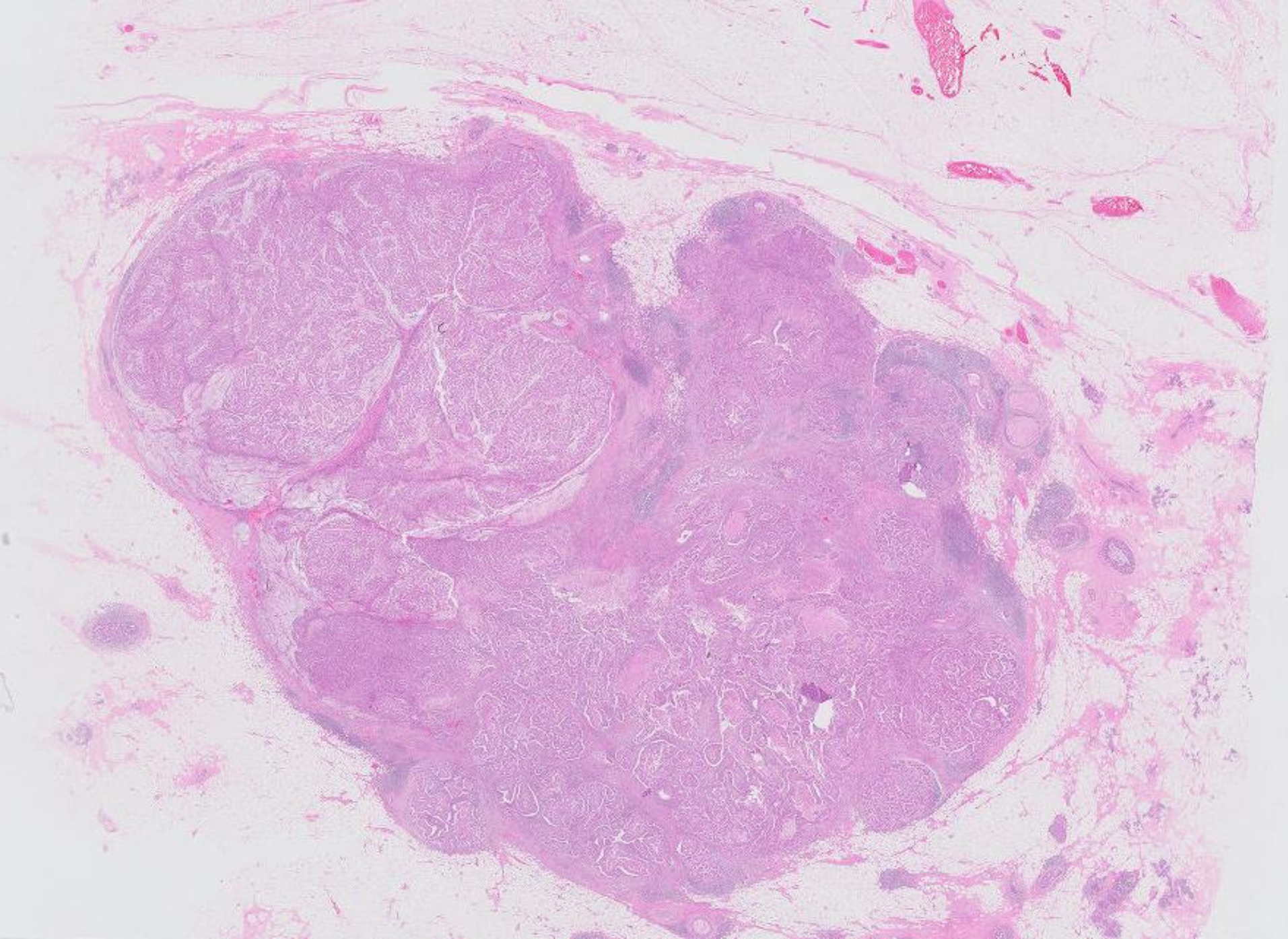
Division of Pathology

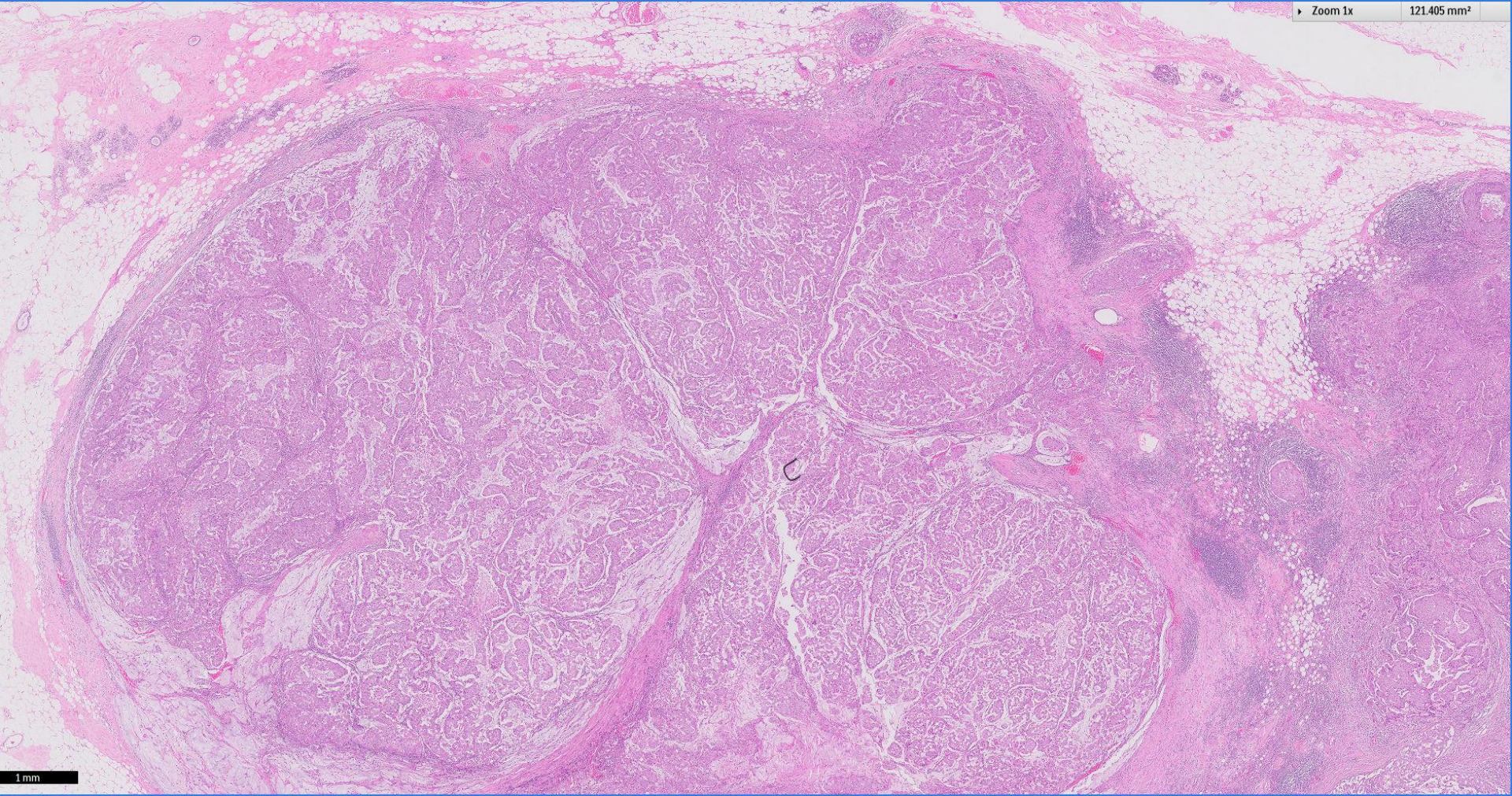


PATHOLOGY

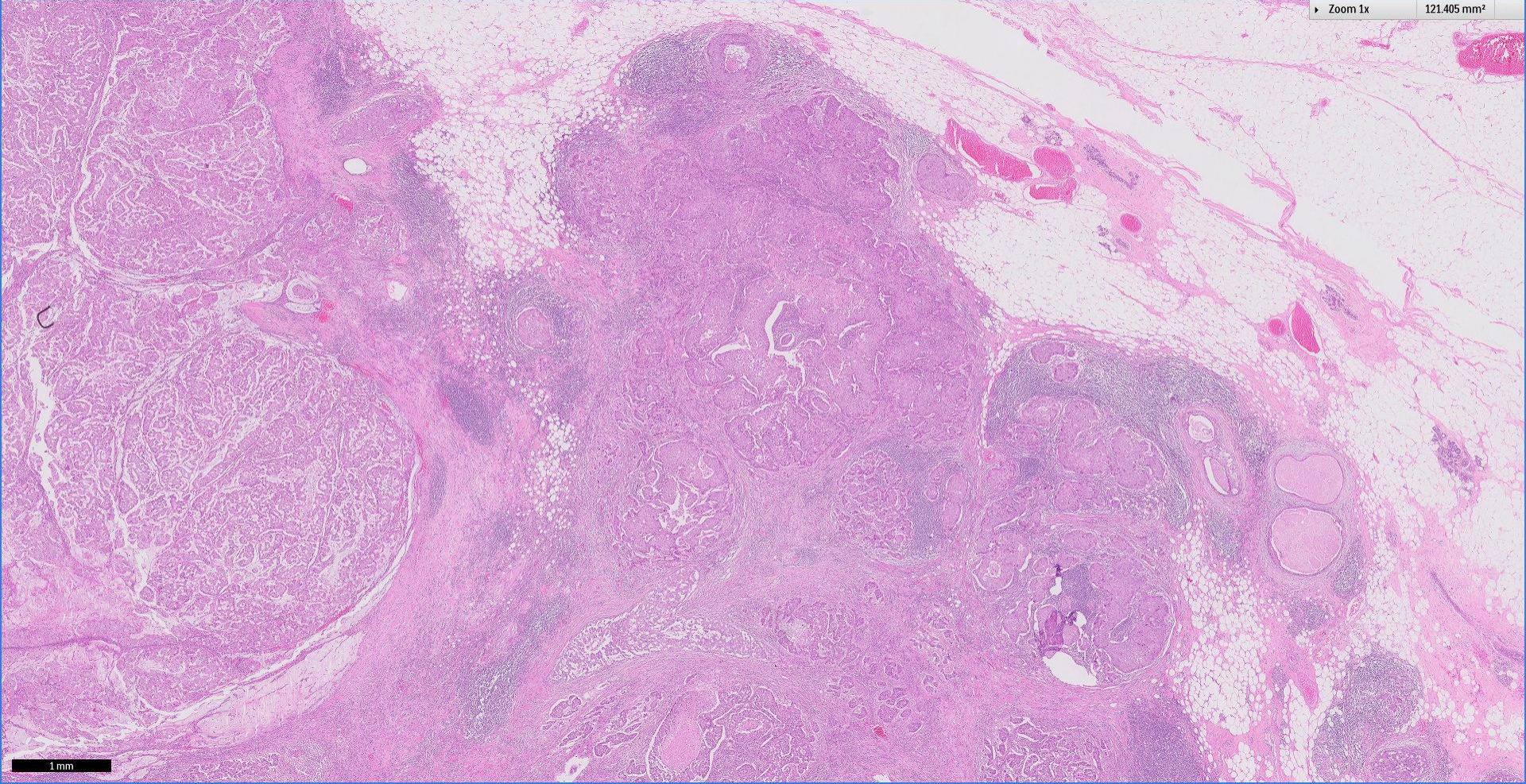
IAP

International Academy of Pathology
Singapore Division





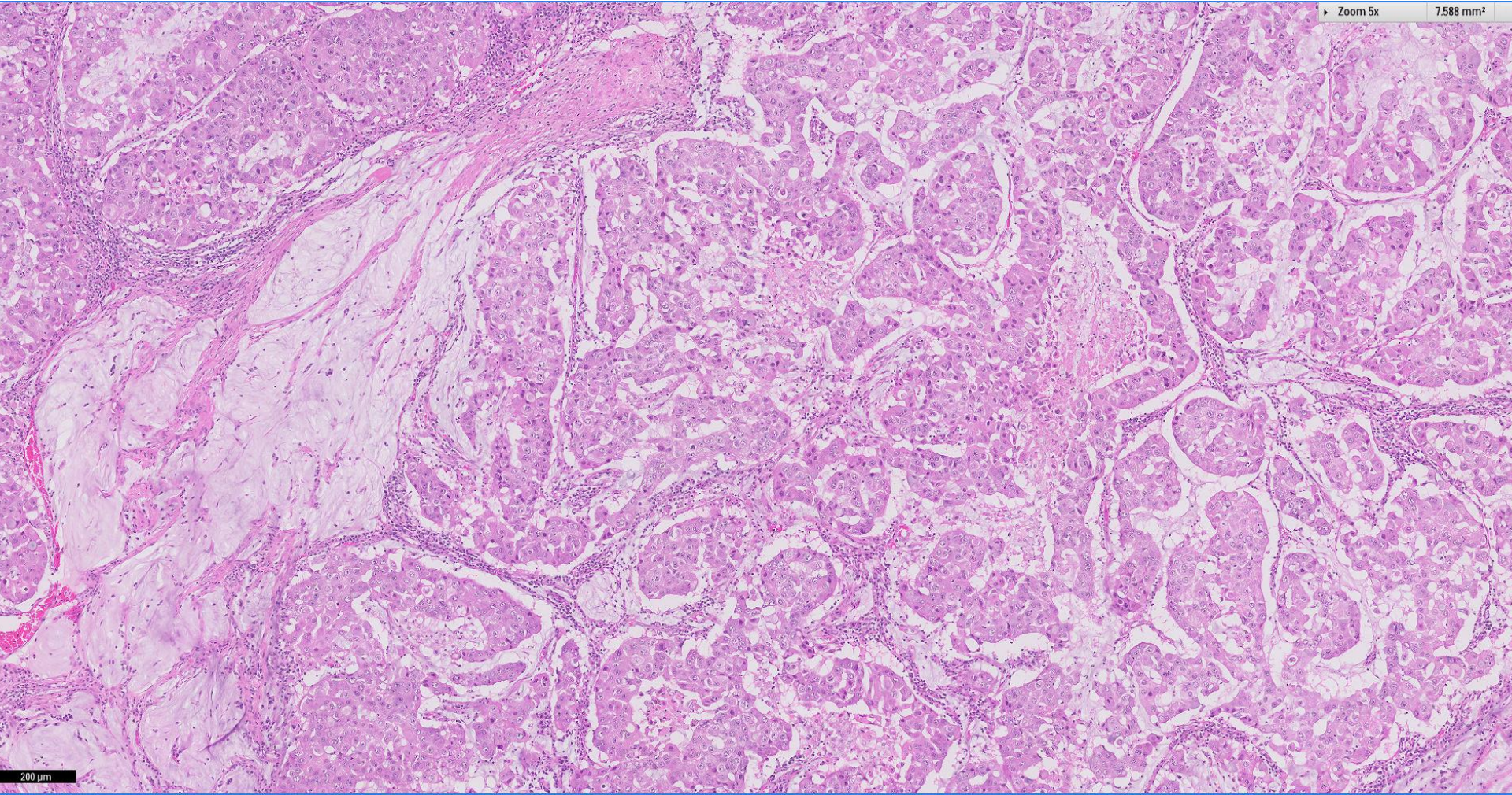
1 mm



1 mm

Zoom 5x

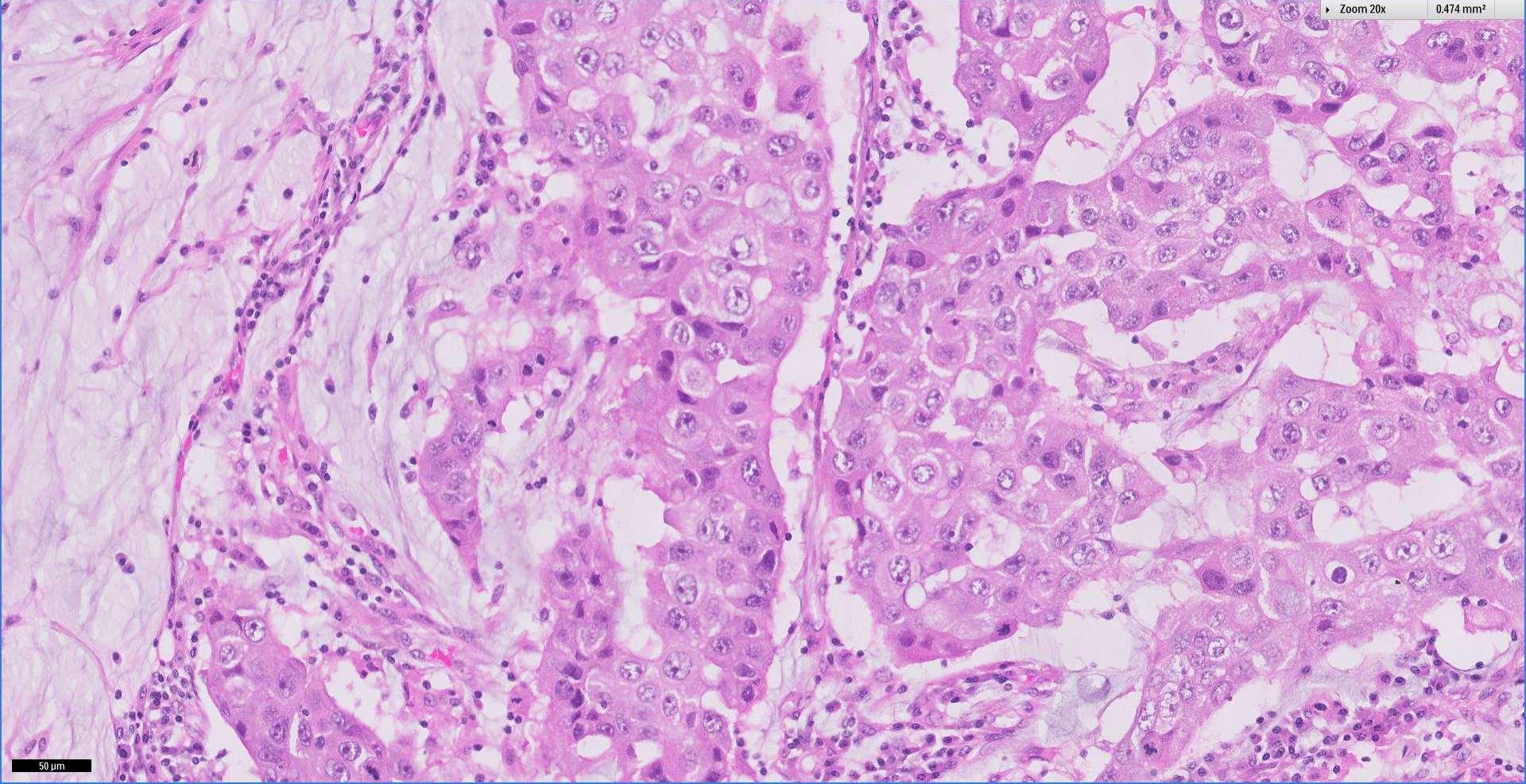
7.588 mm²



200 μ m

Zoom 20x

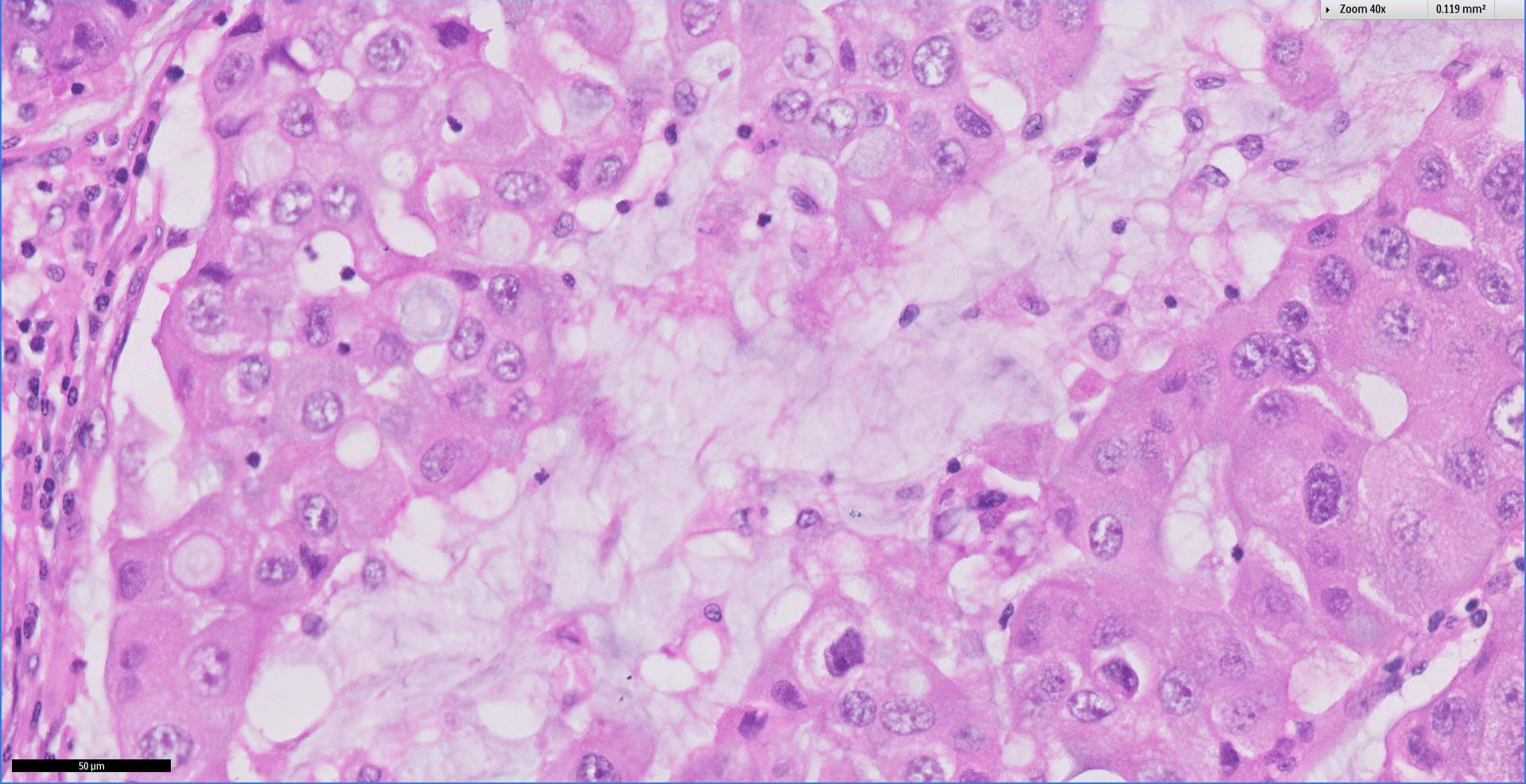
0.474 mm²



50 μm

Zoom 40x

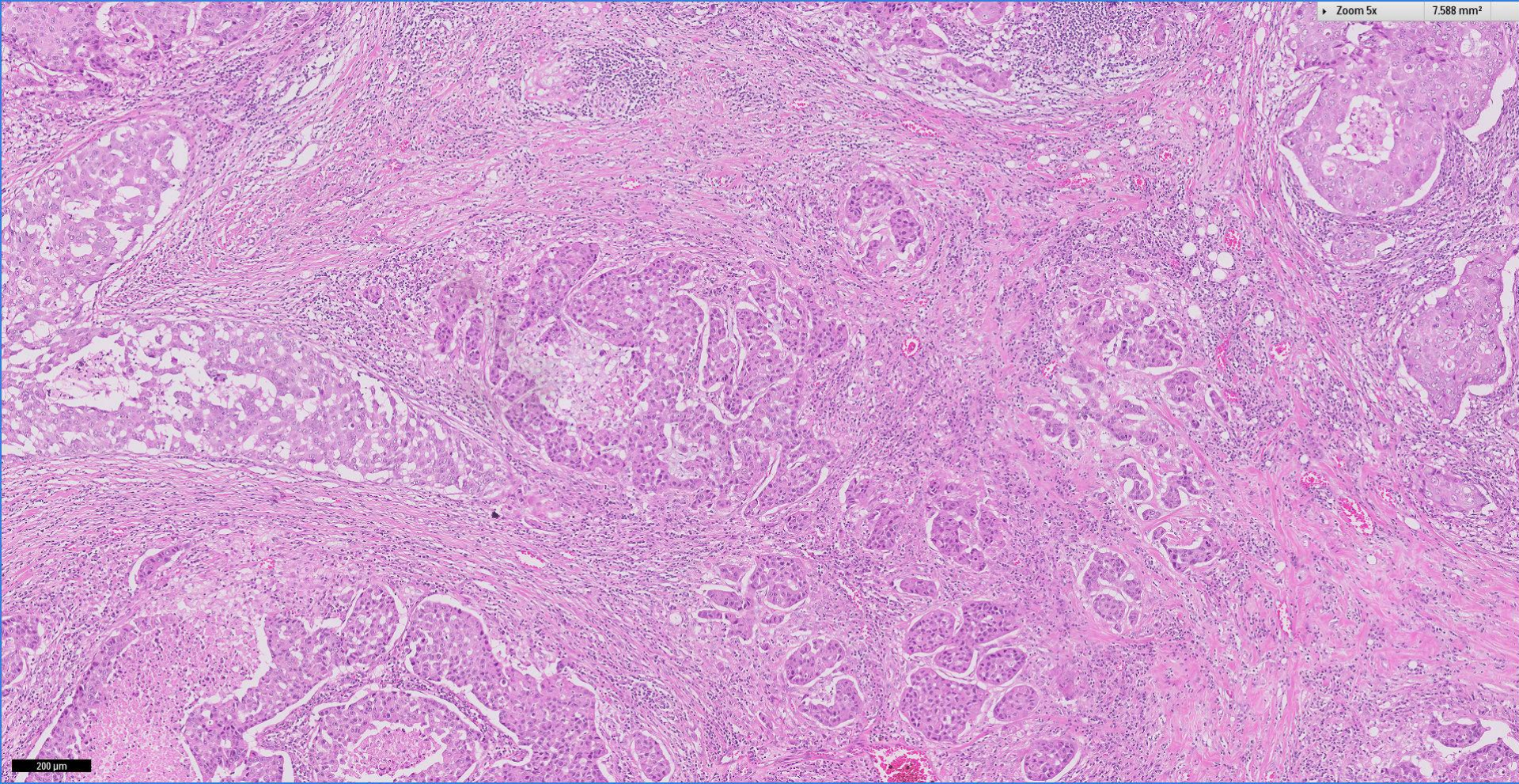
0.119 mm²



50 μ m

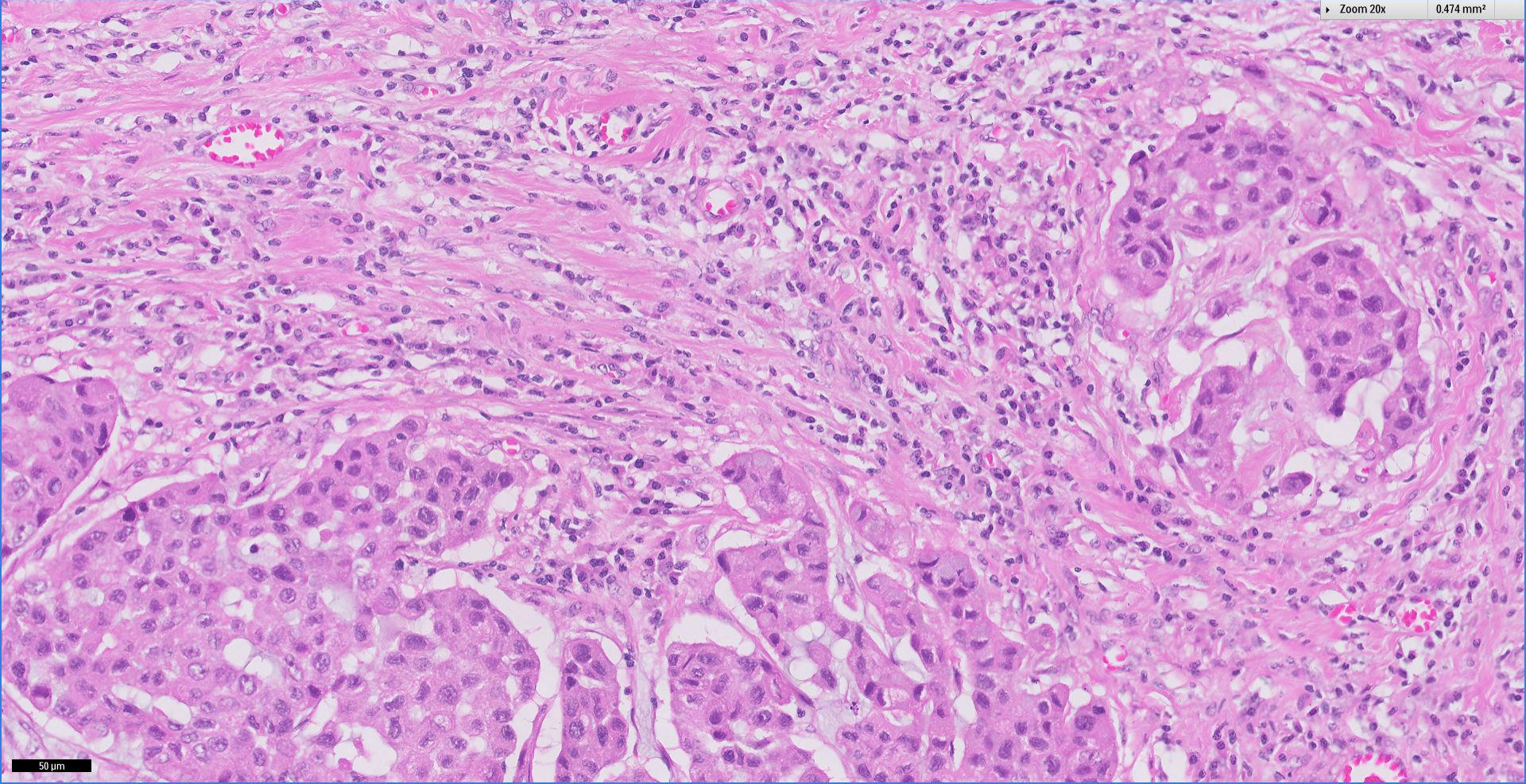
Zoom 5x

7.588 mm²



200 μm

Zoom 20x 0.474 mm²



50 µm

Diagnosis

Right breast, mastectomy ~

Infiltrative ductal carcinoma with apocrine and mucinous differentiation, grade 3.



Singapore
General Hospital

SingHealth

Division of Pathology



PATHOLOGY

IAP

International Academy of Pathology
Singapore Division

 Breast
Pathology
Course 2017

