

## Case 22

44 year old Chinese female.

Left breast mastectomy and axillary clearance.

A haemorrhagic solid and soft tumour measuring 4.7cm was found in the left breast.



Singapore  
General Hospital

SingHealth

Division of Pathology

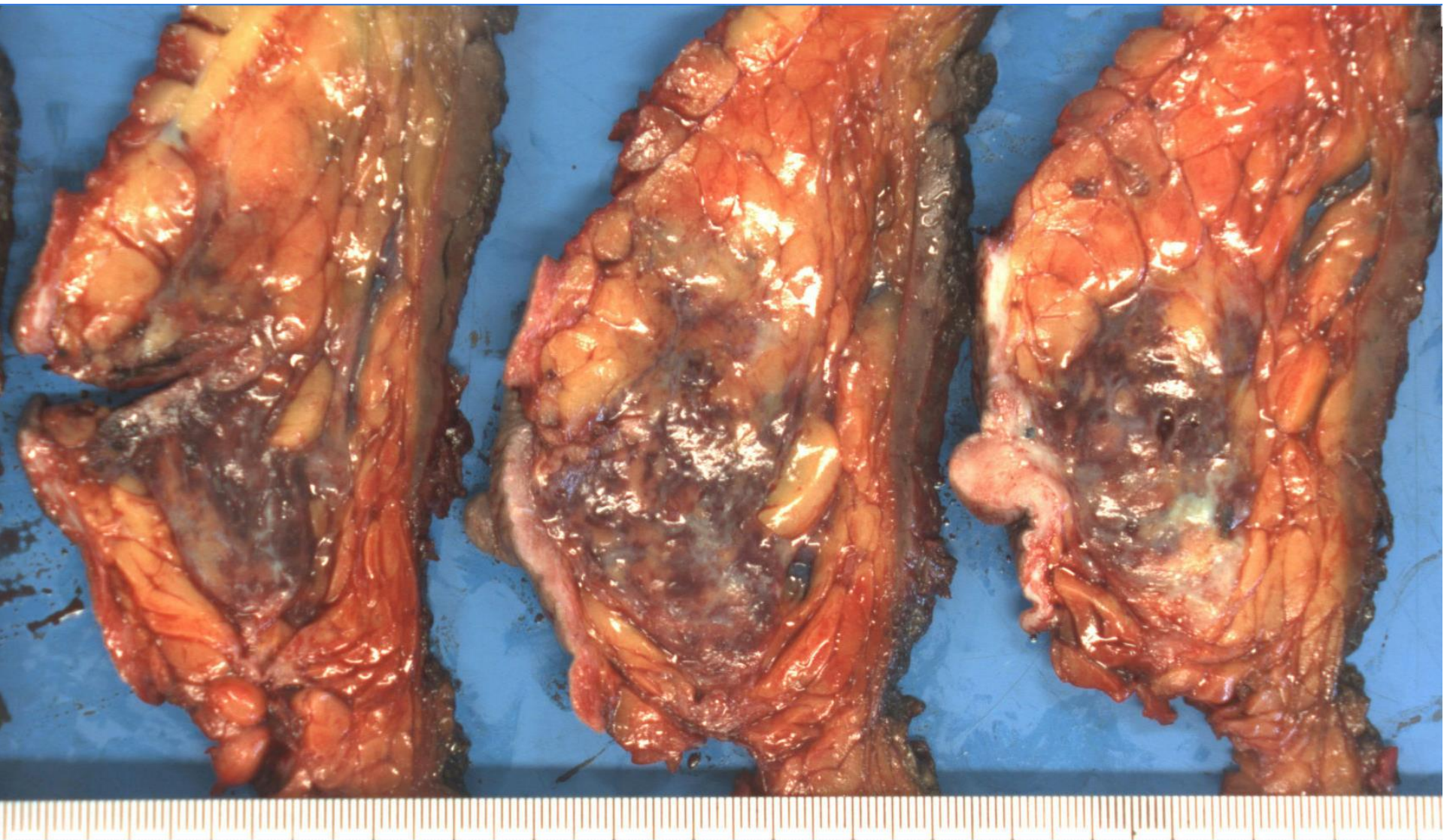


**PATHOLOGY**

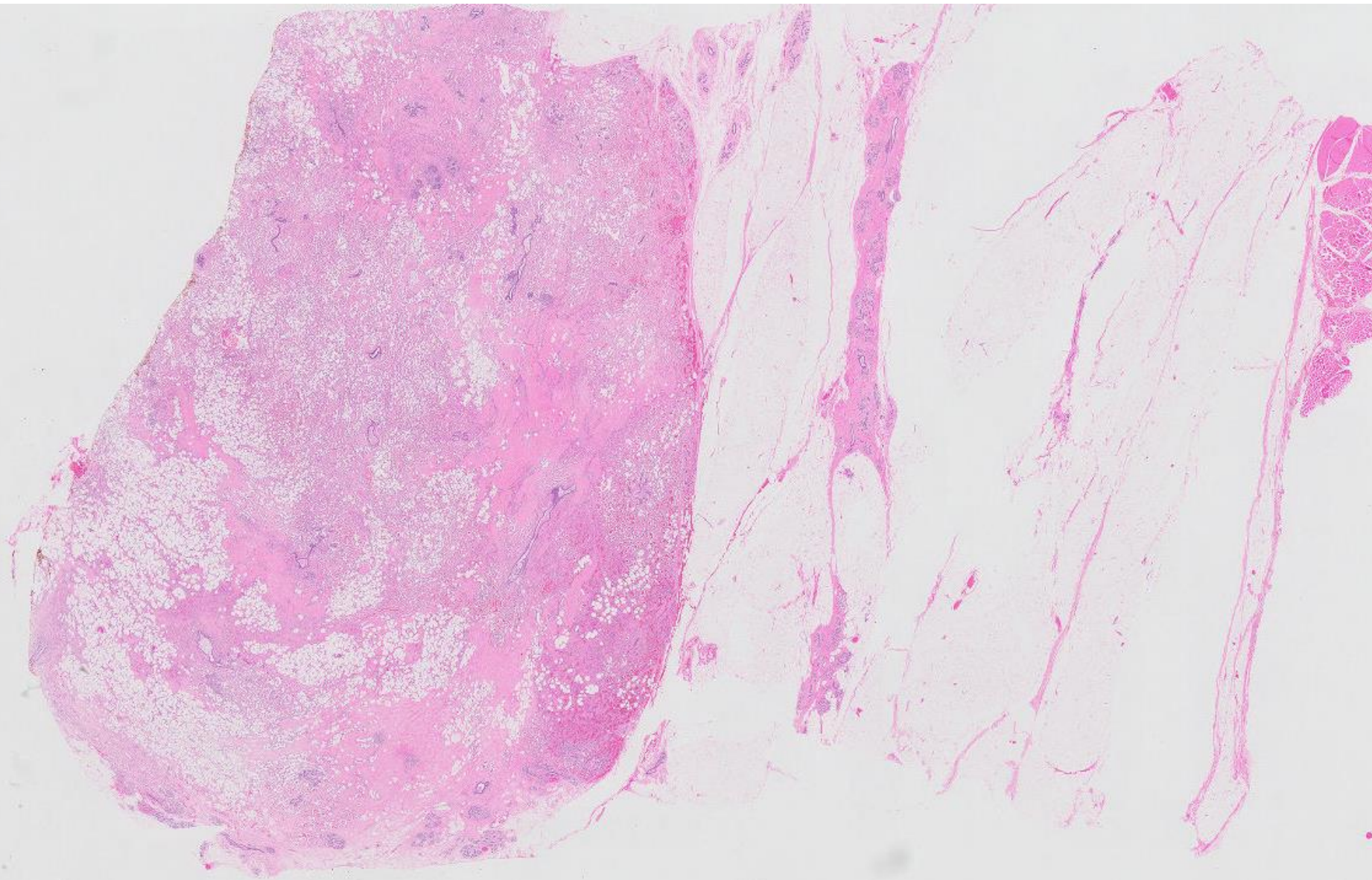
**IAP**

International Academy of Pathology  
Singapore Division

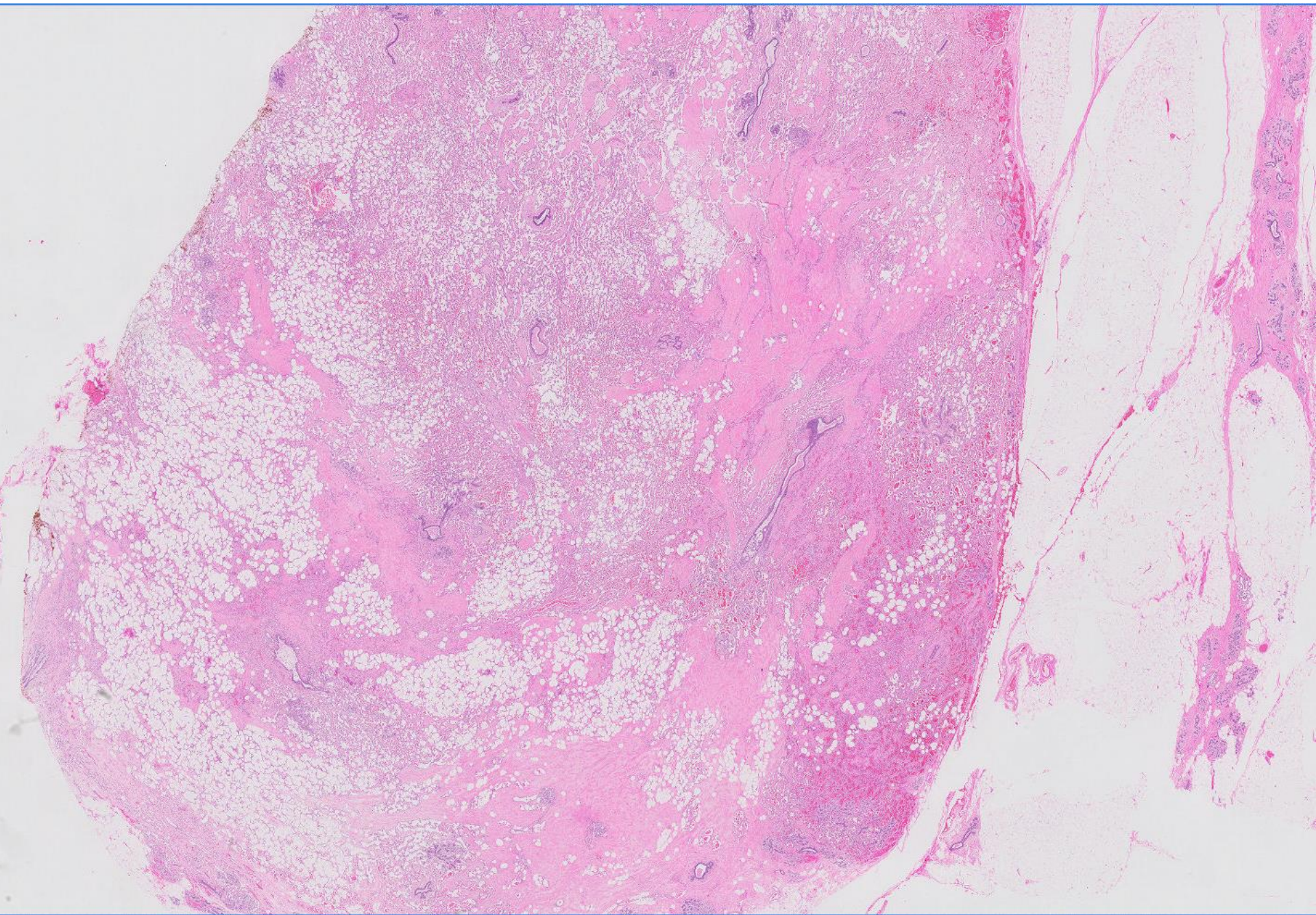




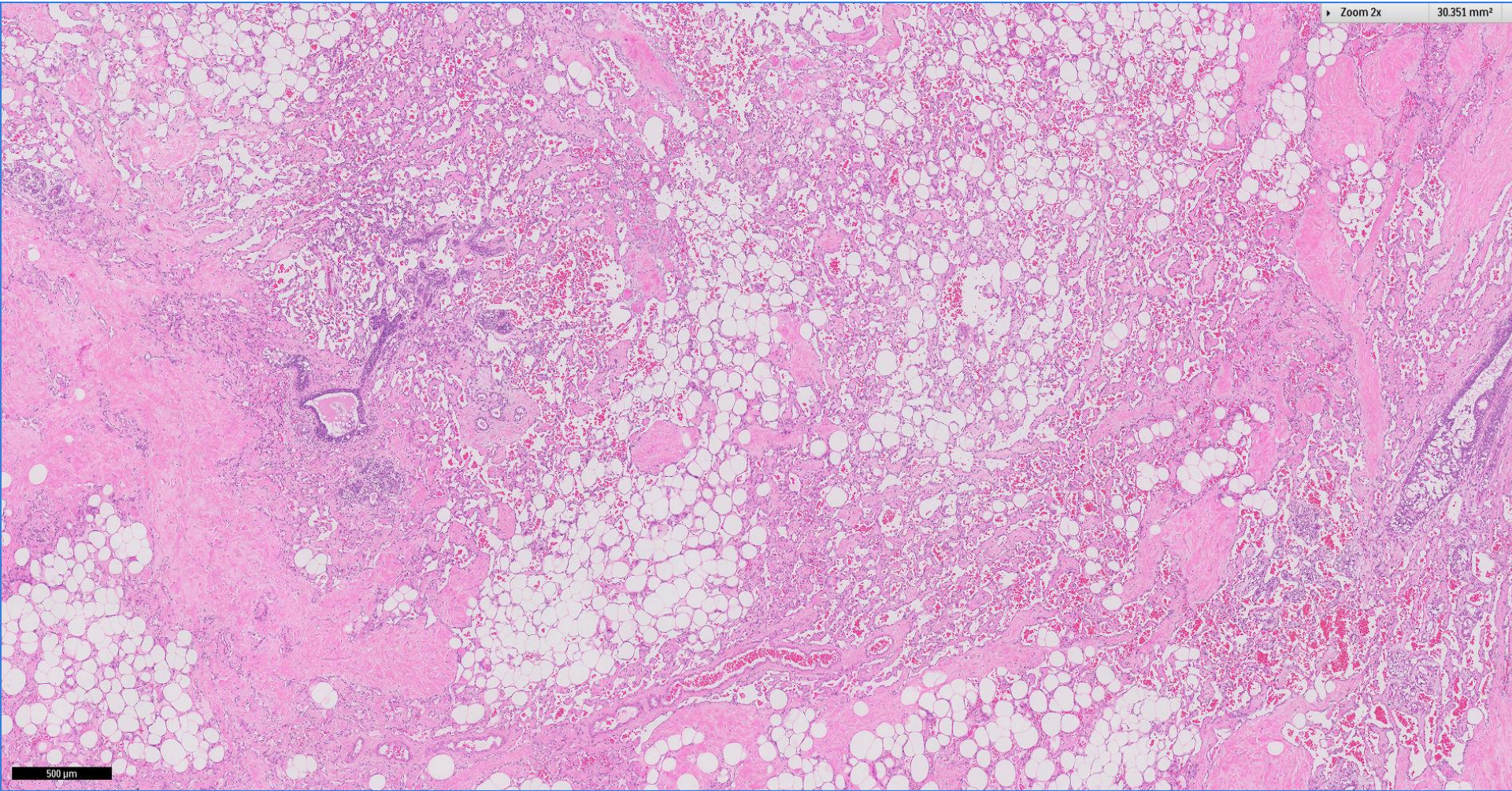




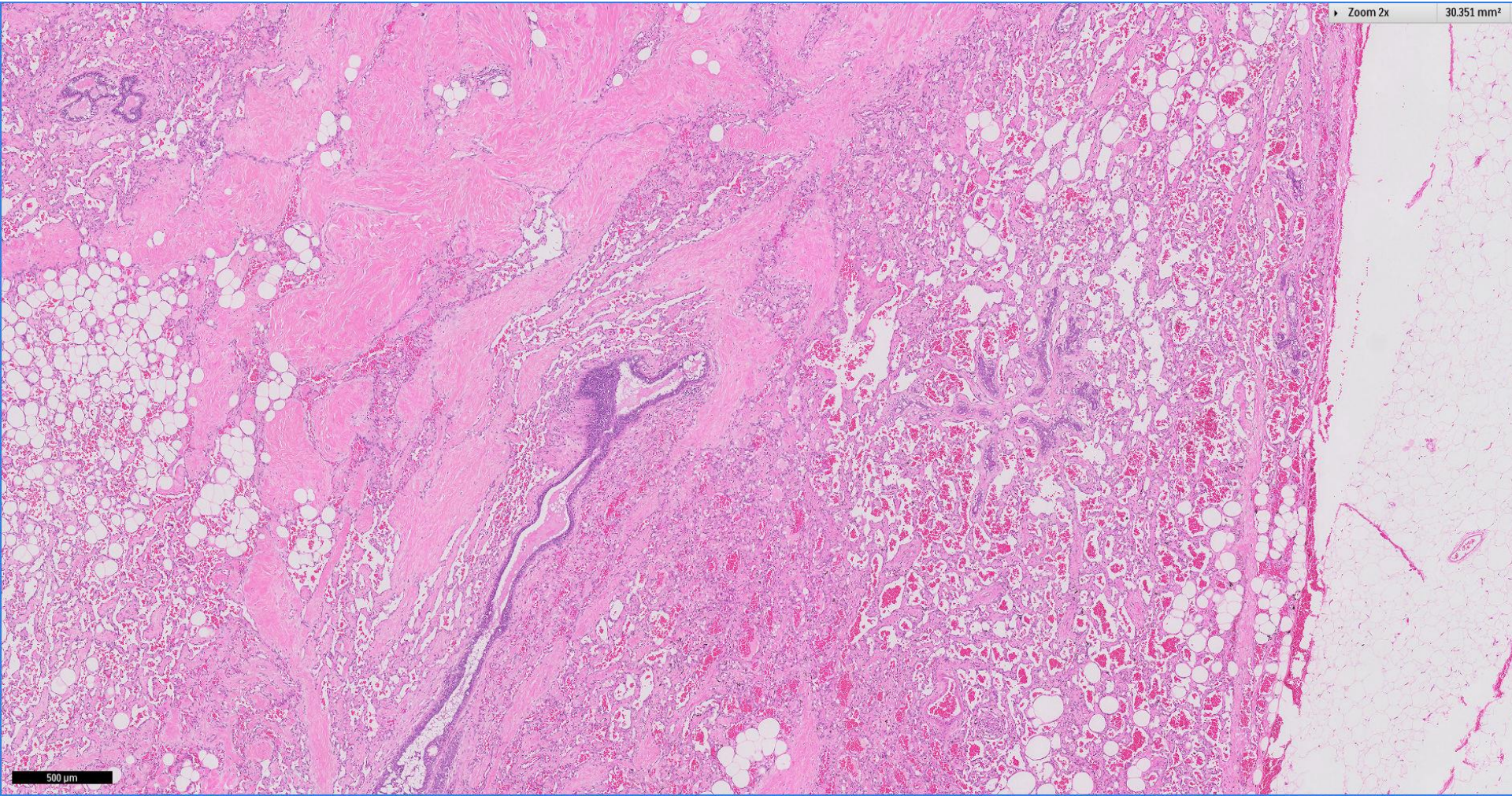








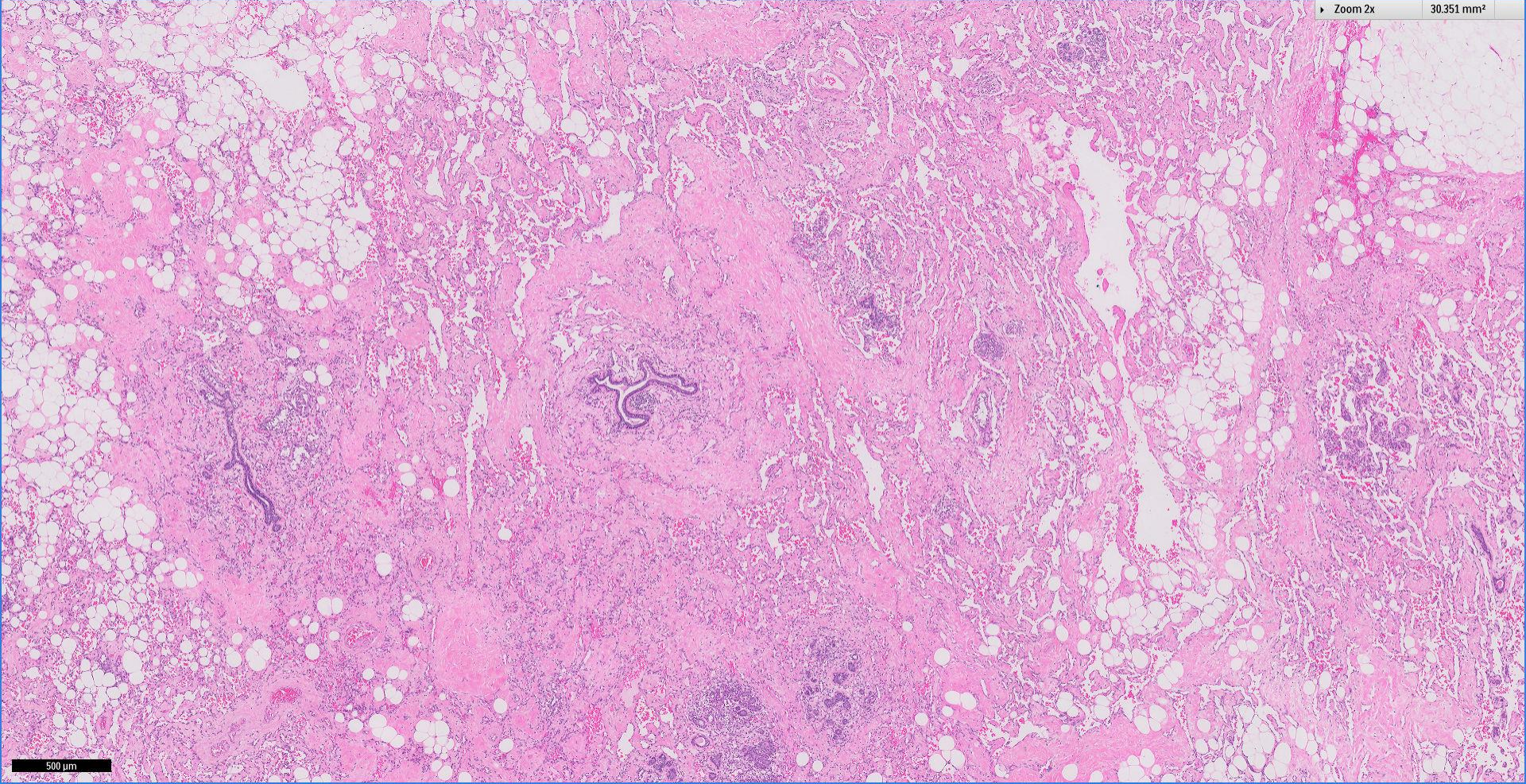






Zoom 2x

30.351 mm<sup>2</sup>

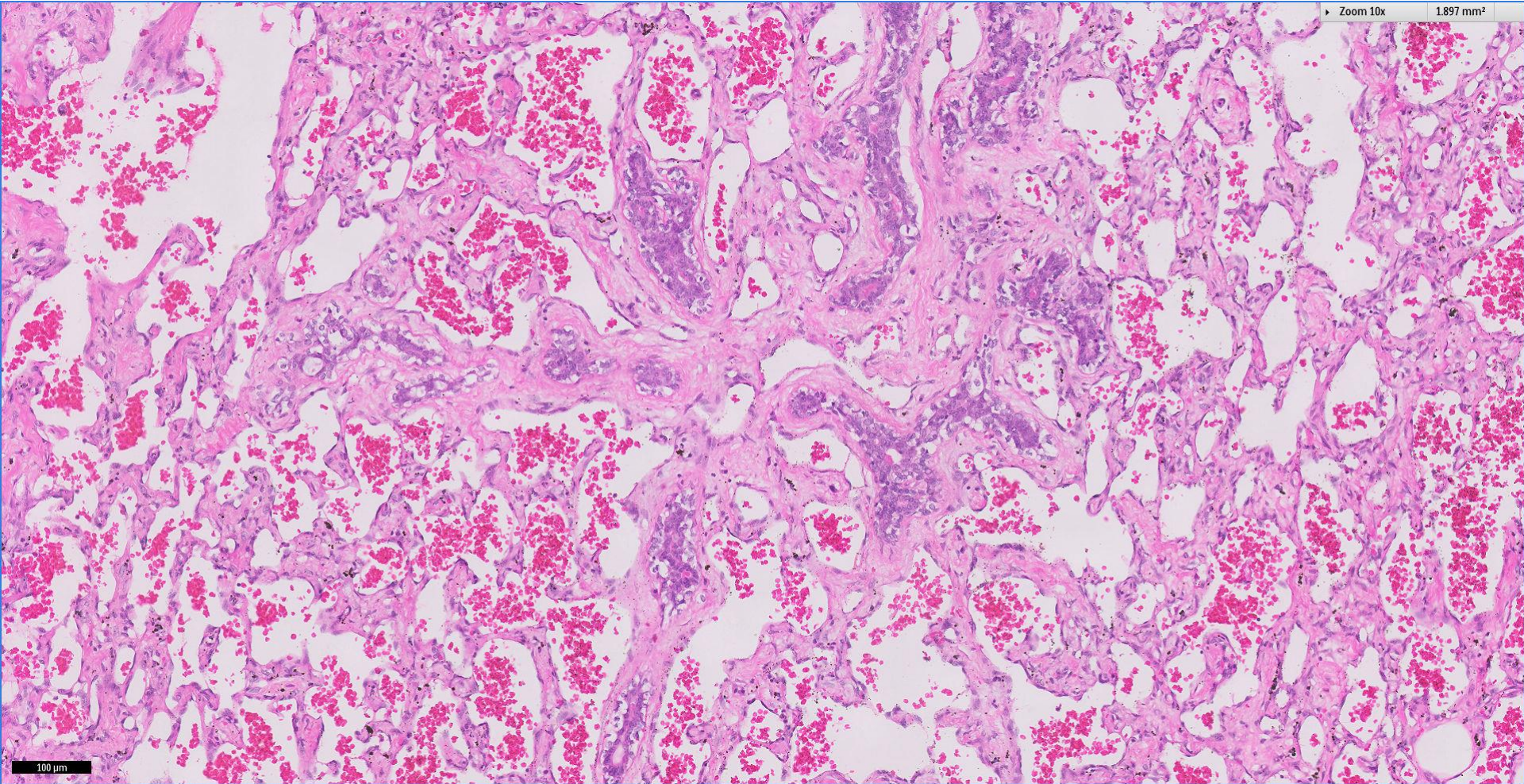


500  $\mu$ m



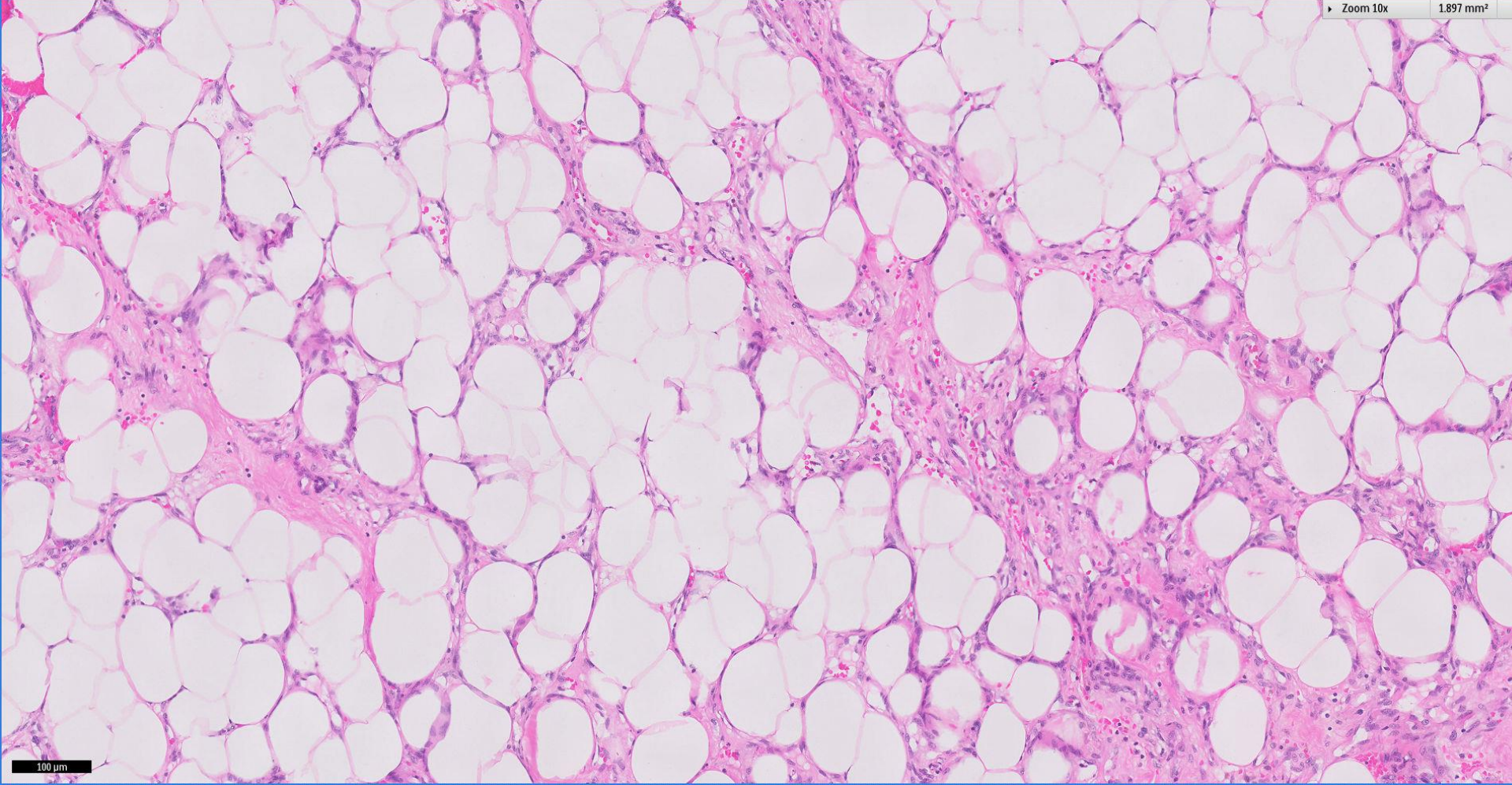
Zoom 10x

1.897 mm<sup>2</sup>



100 μm

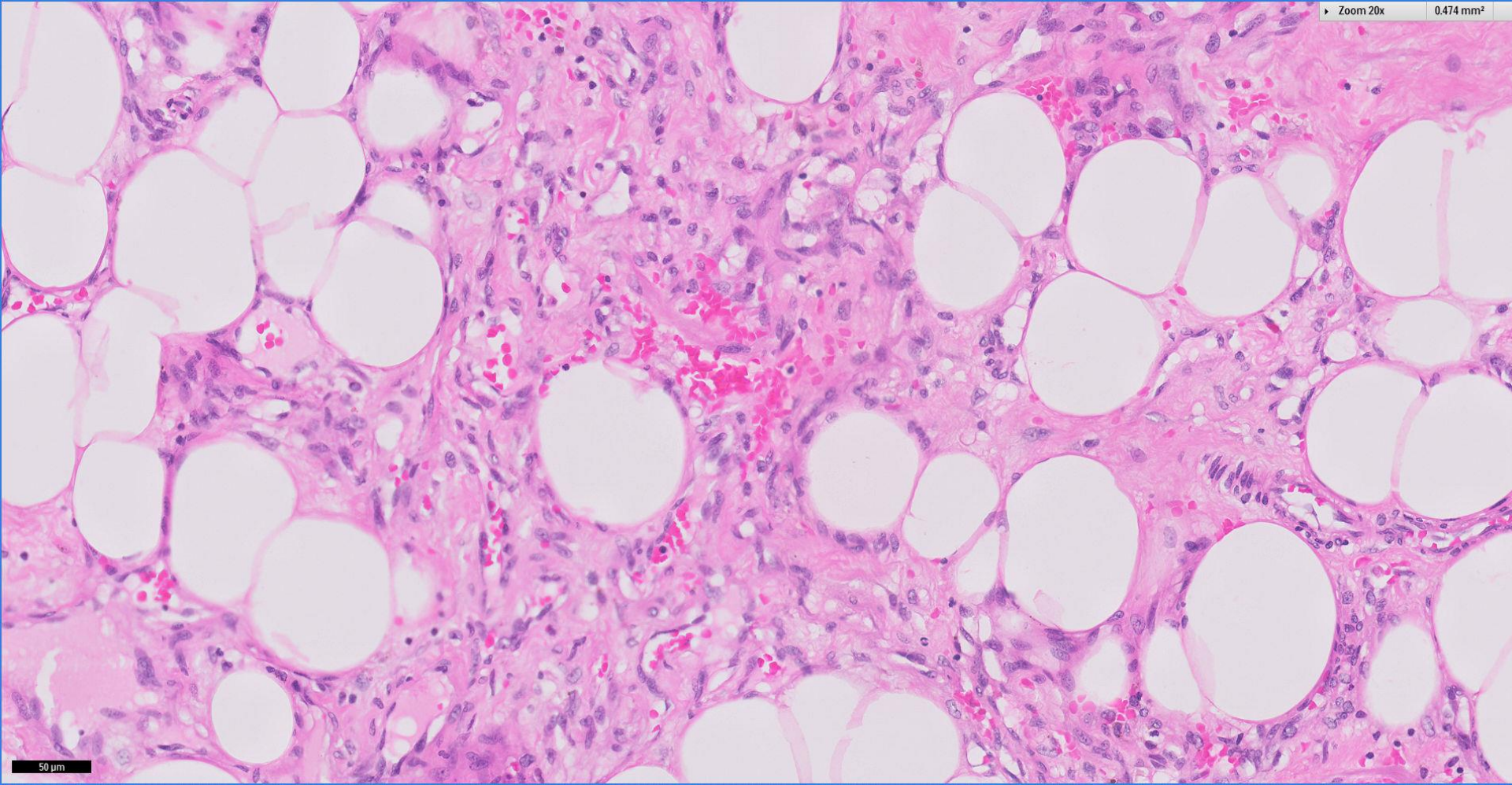






Zoom 20x

0.474 mm<sup>2</sup>

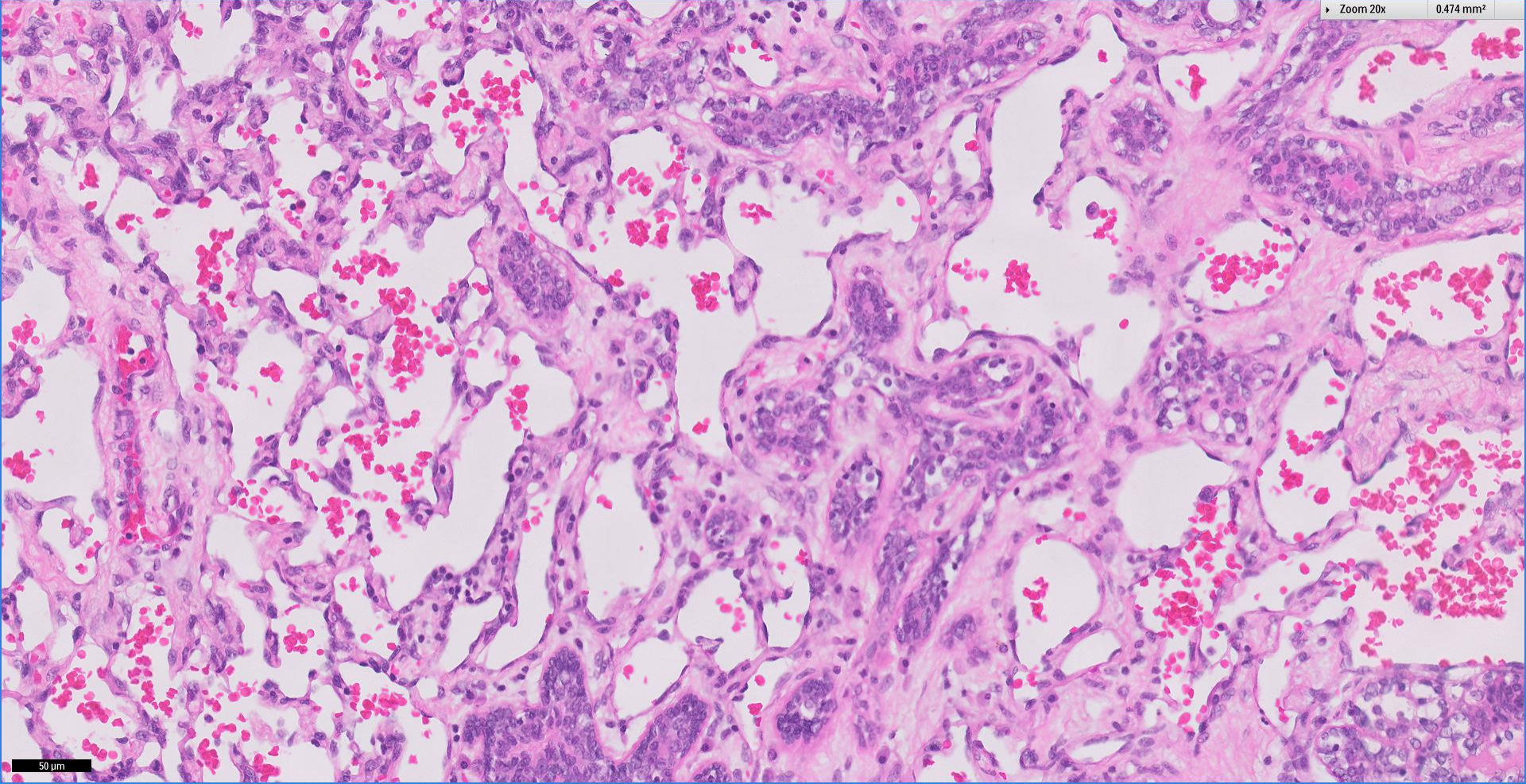


50 μm



Zoom 20x

0.474 mm<sup>2</sup>

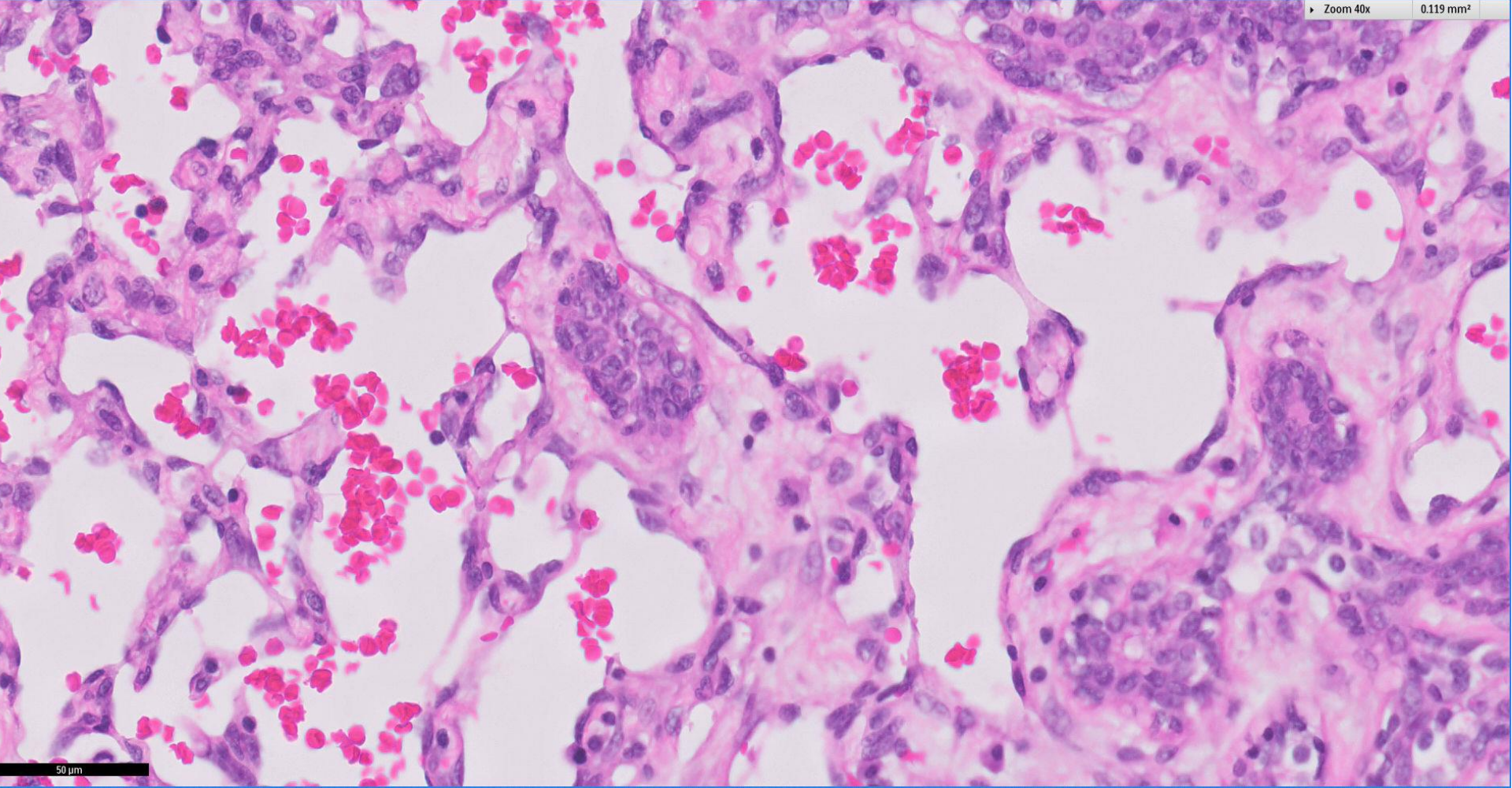


50 μm



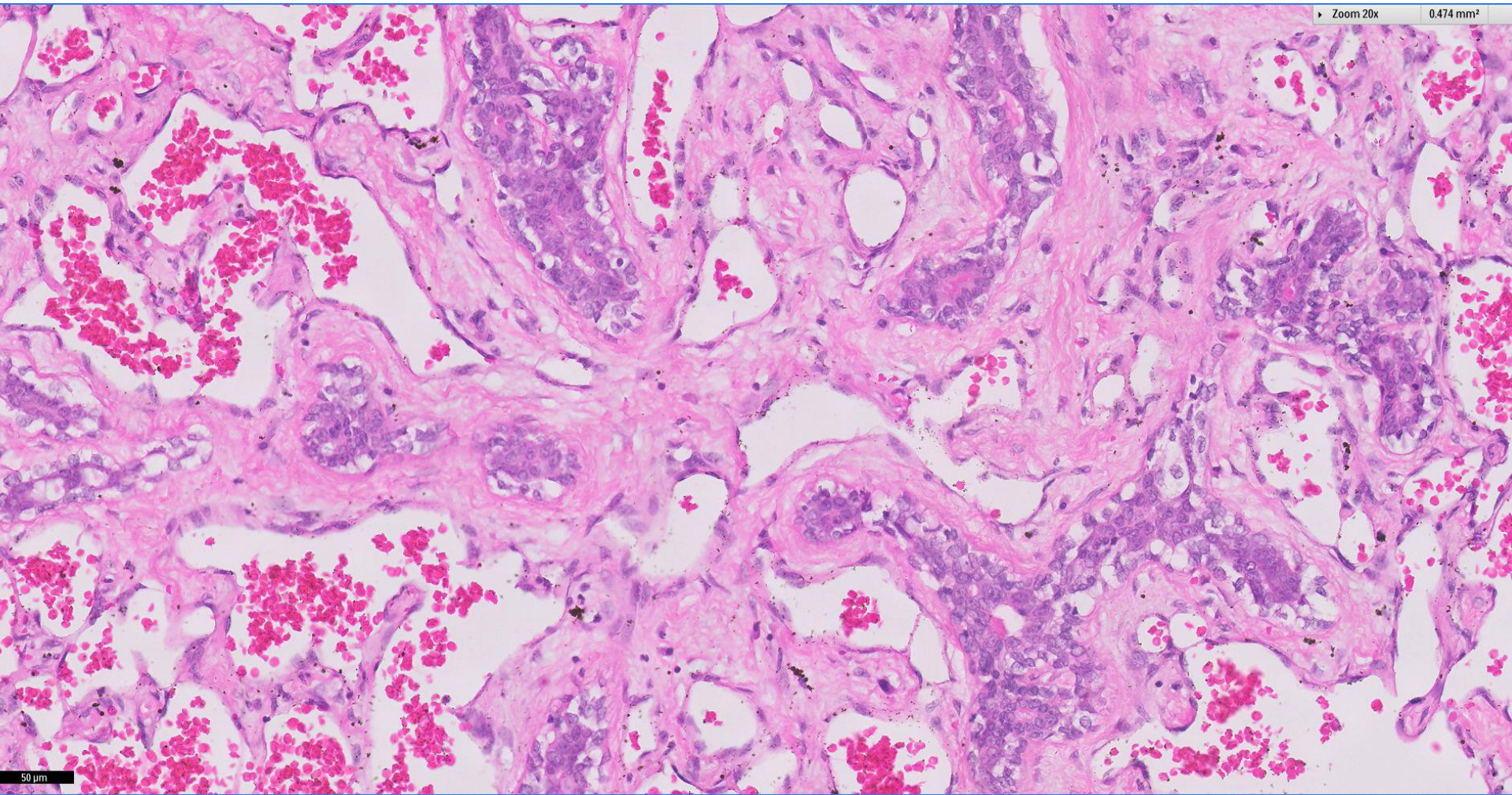
Zoom 40x

0.119 mm<sup>2</sup>



50 μm

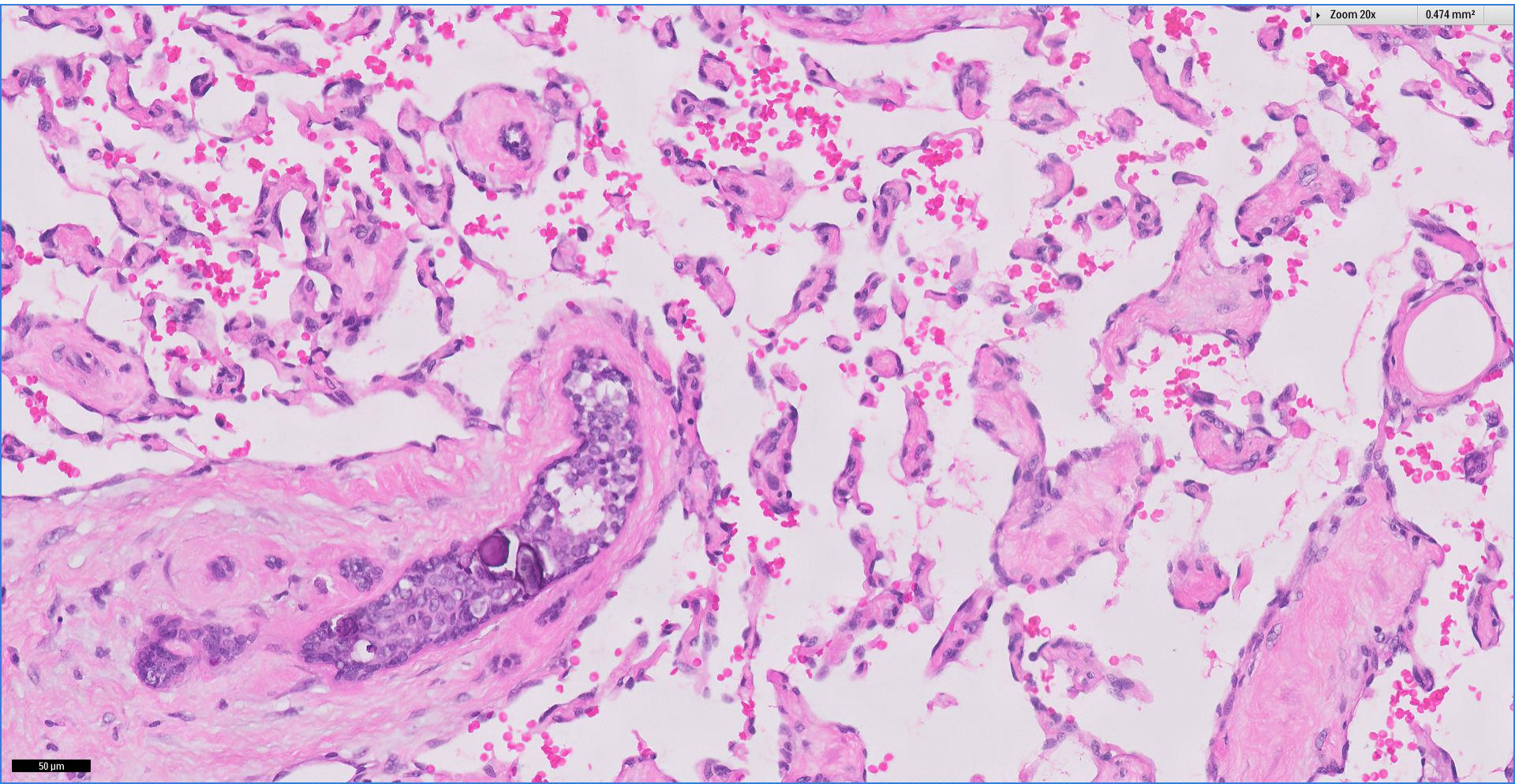






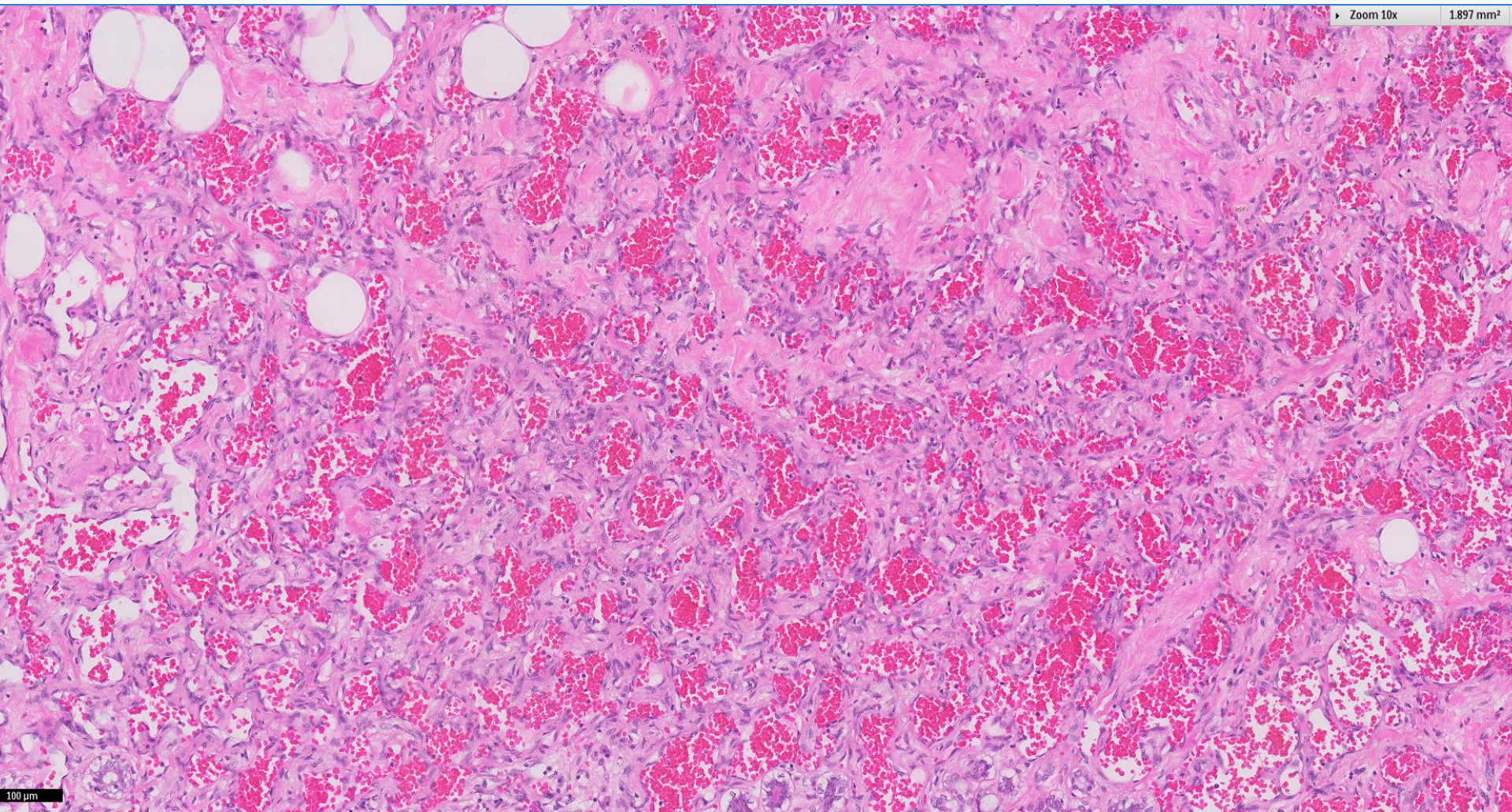
Zoom 20x

0.474 mm<sup>2</sup>

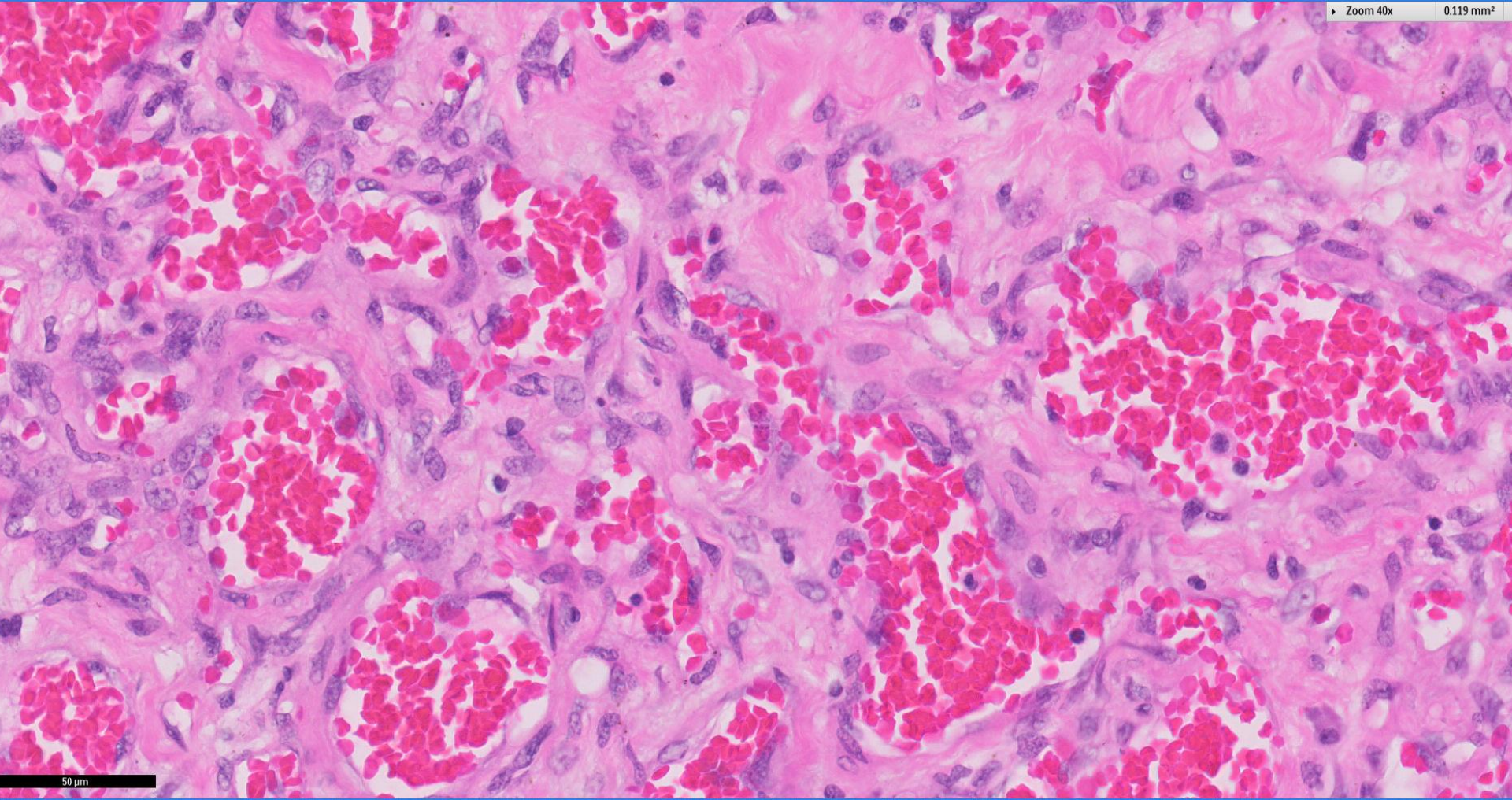


50 μm











# Diagnosis

## Left breast, mastectomy and axillary clearance ~

Angiosarcoma, 4.7cm, well to intermediate differentiation.

Seven benign axillary lymph nodes.



Singapore  
General Hospital

SingHealth

Division of Pathology



SingHealth DukeNUS  
ACADEMIC MEDICAL CENTRE

**PATHOLOGY**

**IAP**

International Academy of Pathology  
Singapore Division



# Angiosarcoma

- Malignant vasoformative neoplasm that demonstrates endothelial differentiation.
- May be primary, arising de novo within breast parenchyma, or it may be secondary, developing in the skin, chest wall, or breast parenchyma after surgical and radiation treatment for breast cancer.
- Primary angiosarcoma is the second-commonest sarcoma of the breast after malignant phyllodes tumour, accounting for 0.05 % of all primary breast malignancies.
- A history of prior radiation therapy is present in patients with secondary angiosarcoma.



Singapore  
General Hospital

SingHealth

Division of Pathology



SingHealth DukeNUS  
ACADEMIC MEDICAL CENTRE

PATHOLOGY

The logo for the International Academy of Pathology, featuring the letters 'IAP' in a bold, blue, sans-serif font.

International Academy of Pathology  
Singapore Division



 Breast  
Pathology  
Course 2017

