

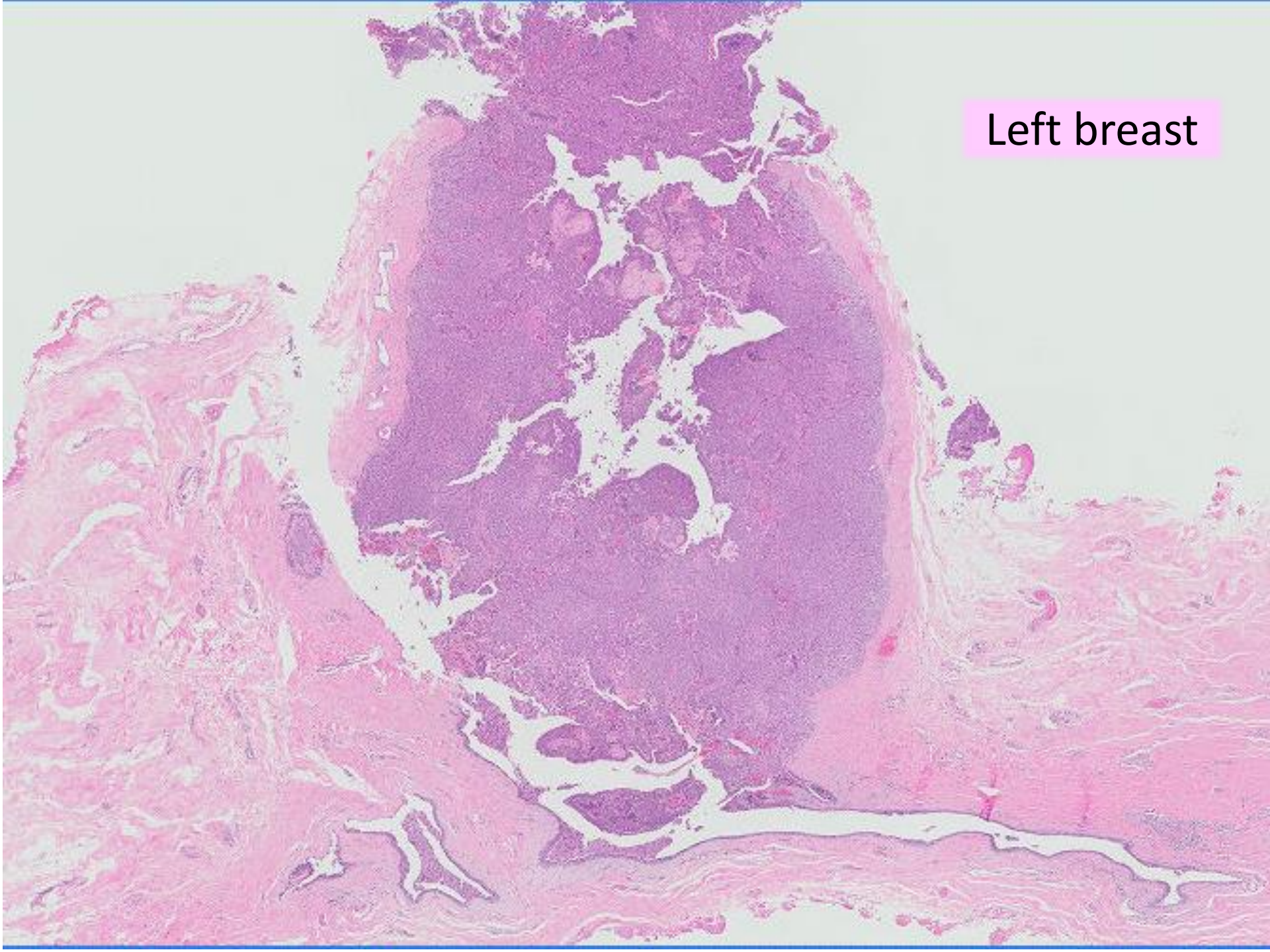
Case 18

32 year old Chinese woman.

Materials from bilateral breast lumps were submitted for review.

A: left breast; B: right breast.

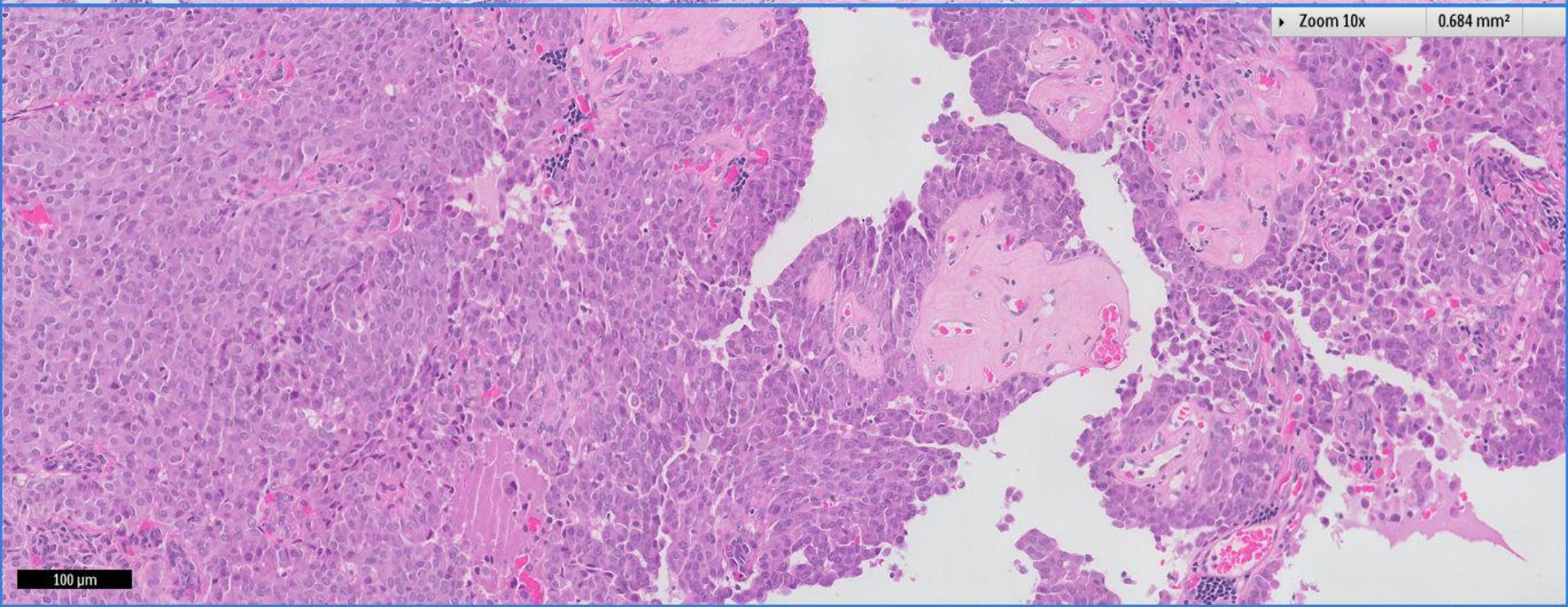
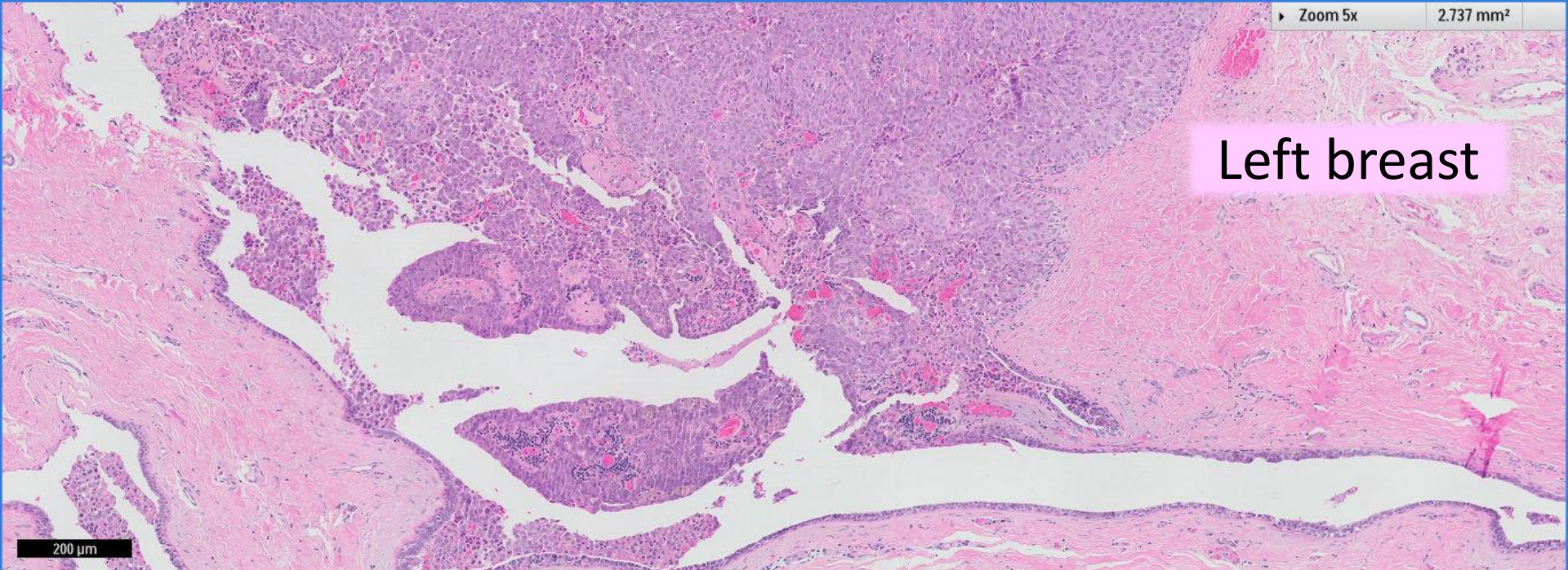
Left breast



Left breast

200 µm

100 µm



Right breast



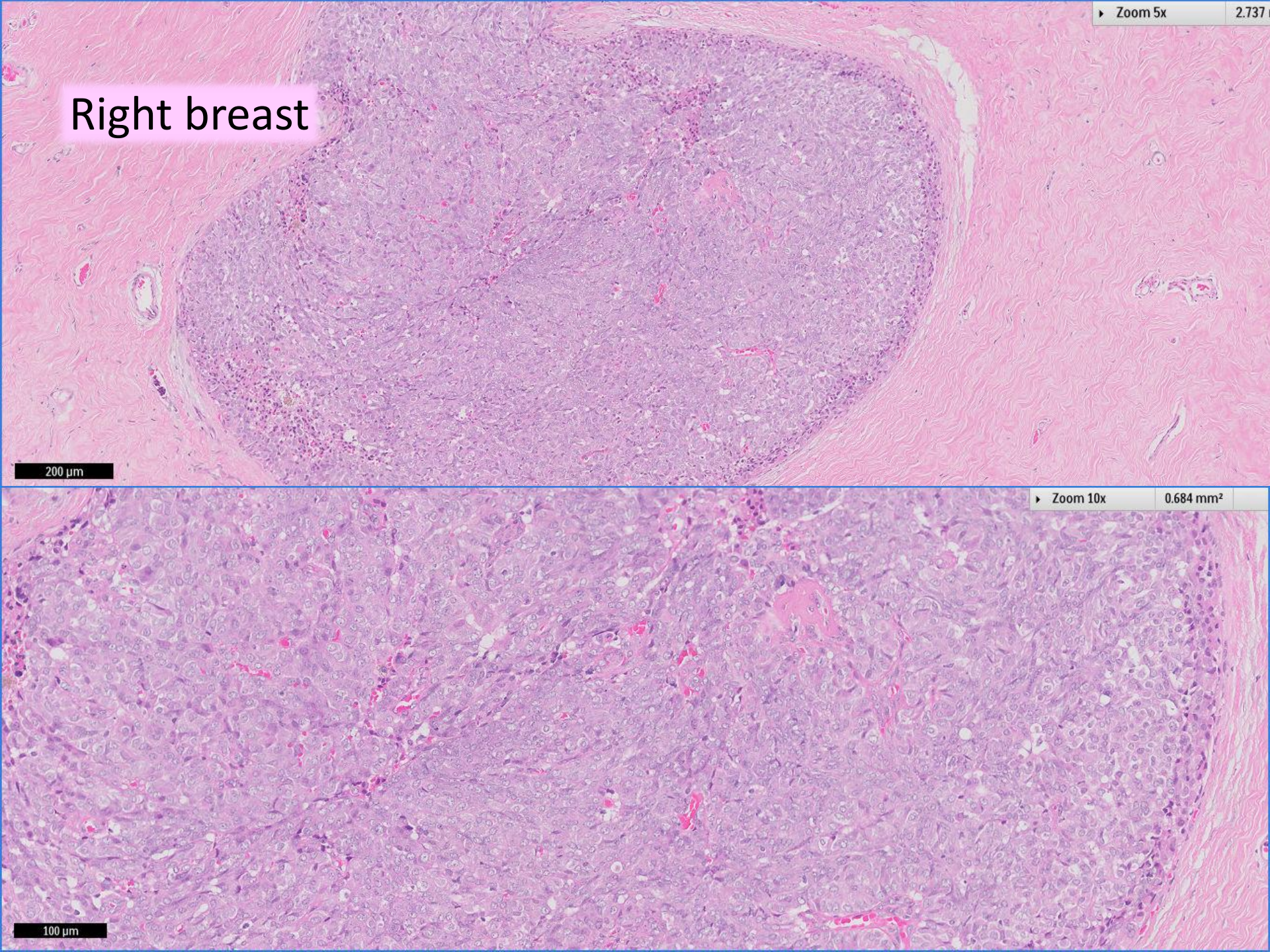
Right breast

200 μ m

Zoom 10x

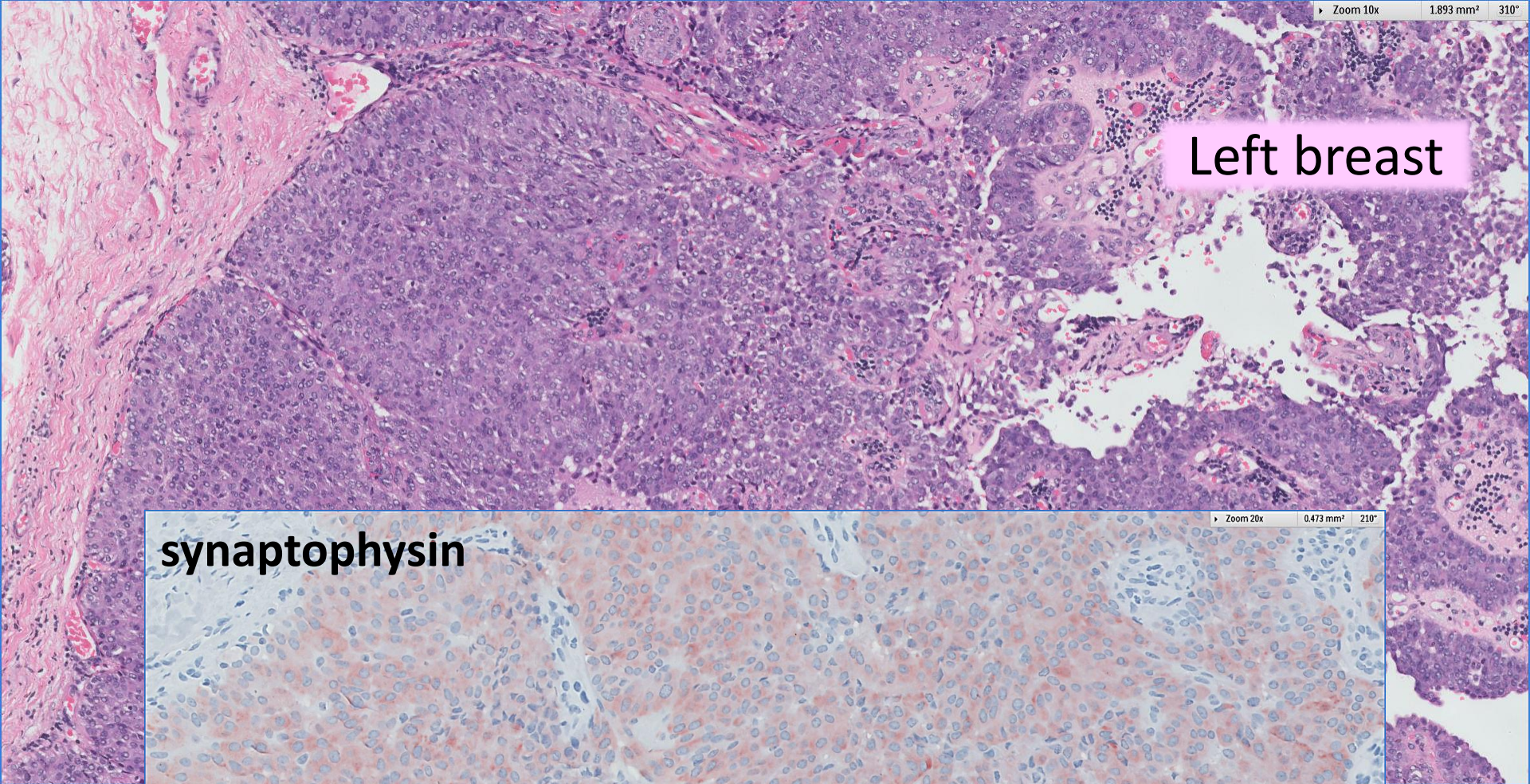
0.684 mm²

100 μ m

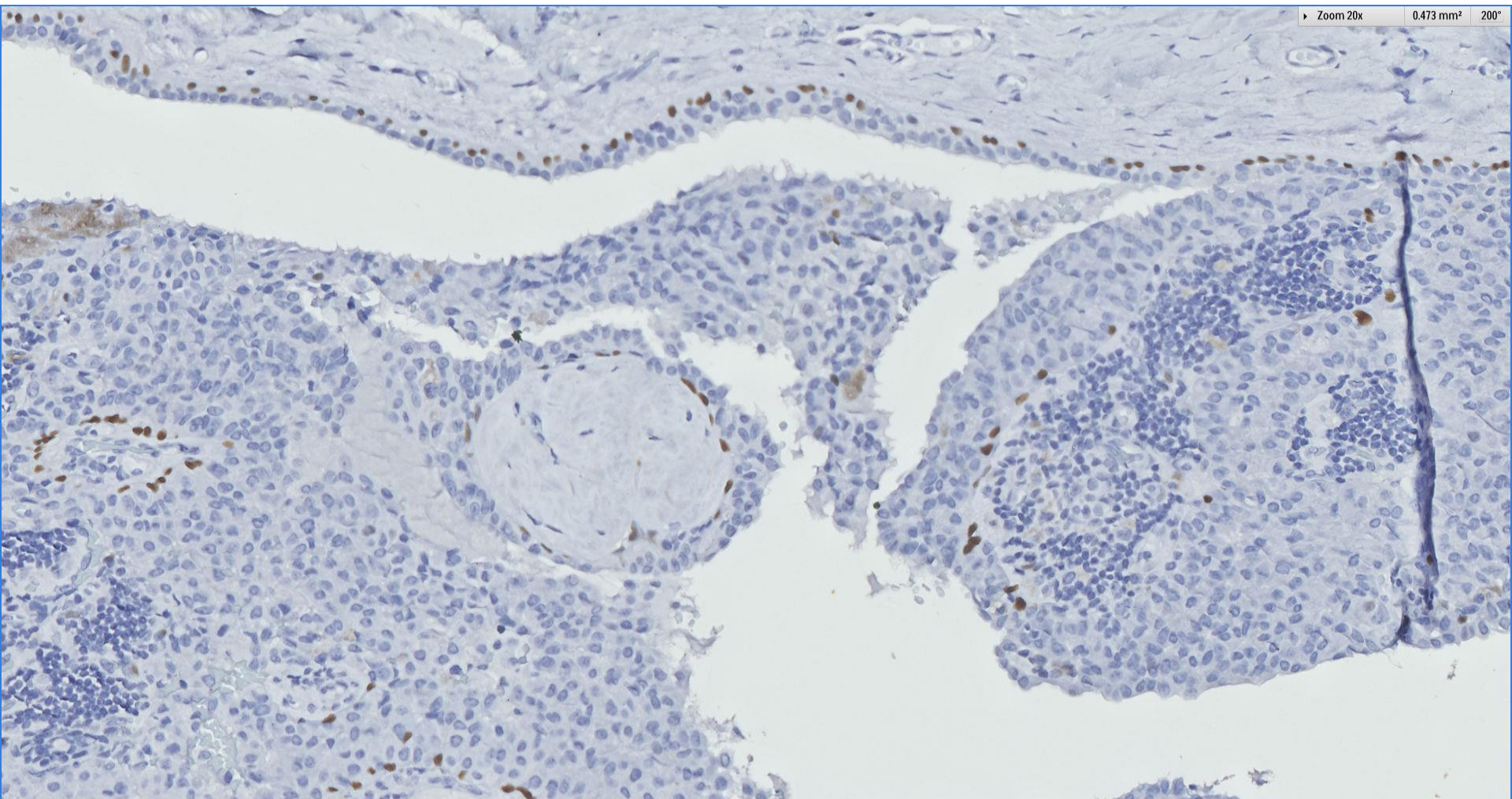


Esplanade, Floating Platform





p63



Immunohistochemistry

Diffuse expression of ER and synaptophysin in both right and left breast lesions, with peripheral preservation of myoepithelial cells highlighted by p63 and CK14.

Diagnosis

Right and left breast lesions ~

Bilateral solid papillary carcinoma in situ



Singapore
General Hospital

SingHealth

Division of Pathology

since
1821
195th Anniversary


SingHealth DukeNUS
ACADEMIC MEDICAL CENTRE
PATHOLOGY



Solid papillary carcinoma (in situ)

- Majority are unilateral.
- Bilateral lesions are uncommon, and are described as anecdotal case reports ~
 - Case Rep Surg 2013; 8129129
 - Breast Cancer 2014; 21: 508-13.



Singapore
General Hospital
SingHealth
Division of Pathology

since
1821
195th Anniversary

SingHealth **DukeNUS**
ACADEMIC MEDICAL CENTRE
PATHOLOGY





Breast Pathology Course 2016



Pathology Building 1958-2013, by Ong Kim Seng