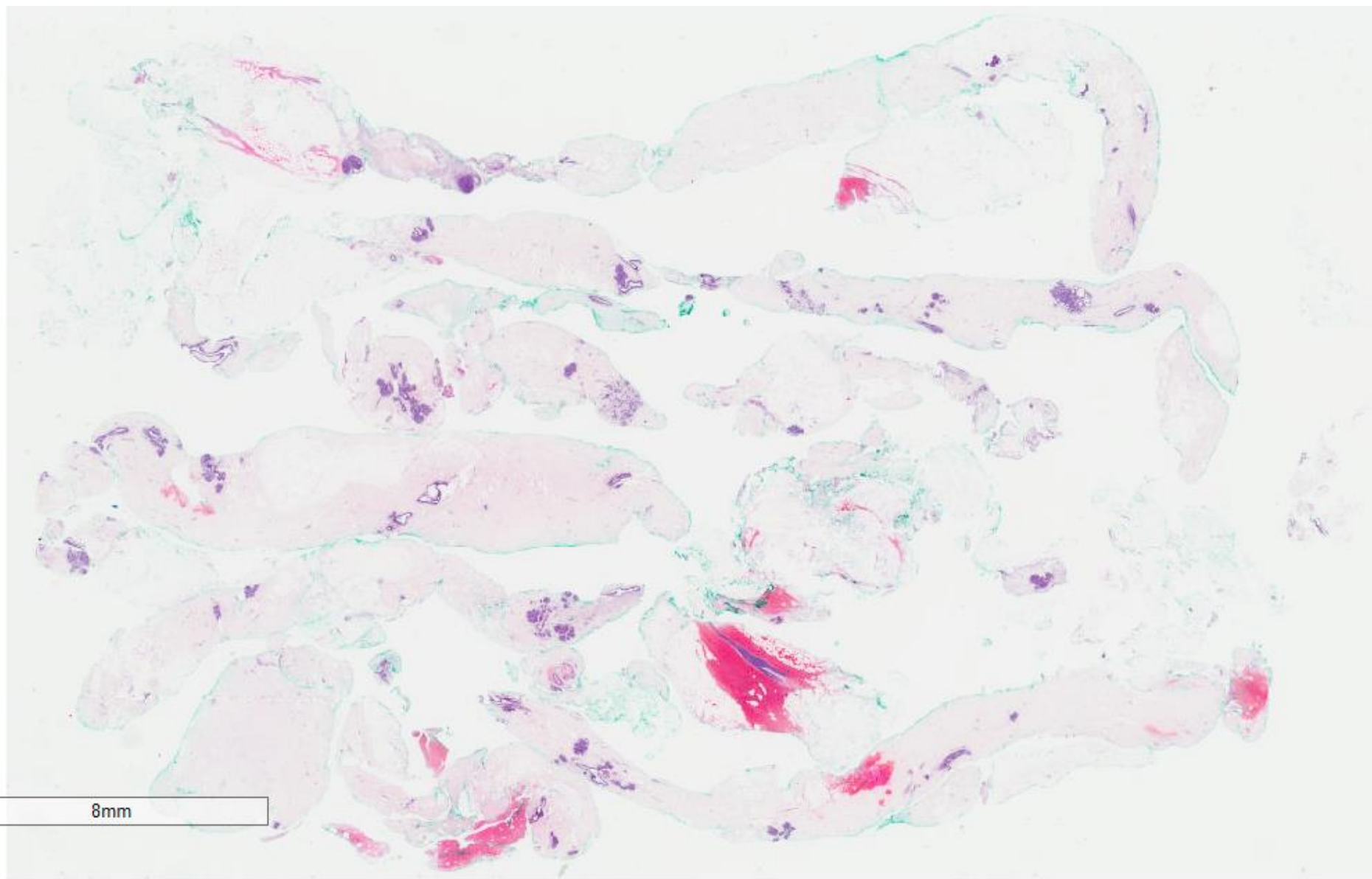
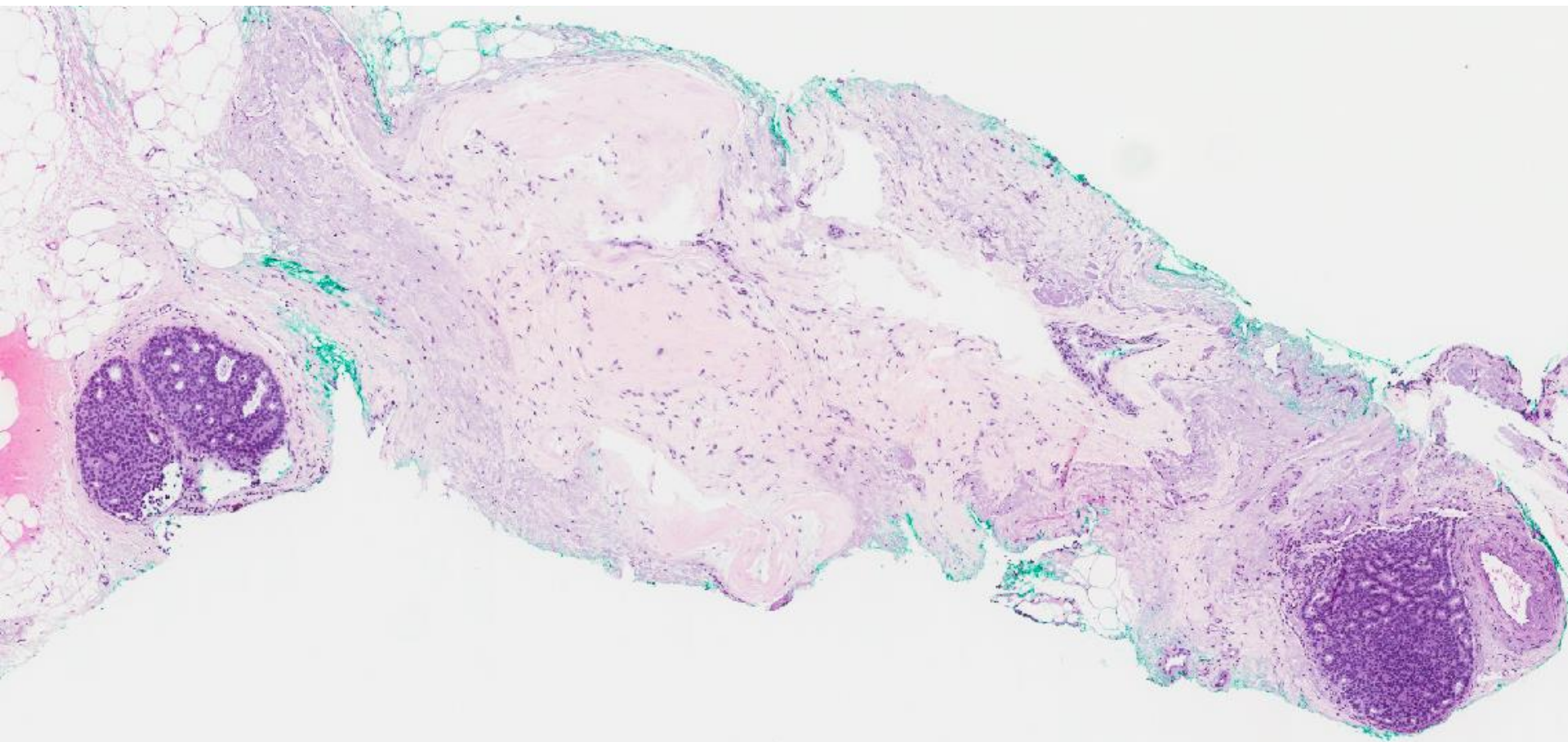


## Case 30

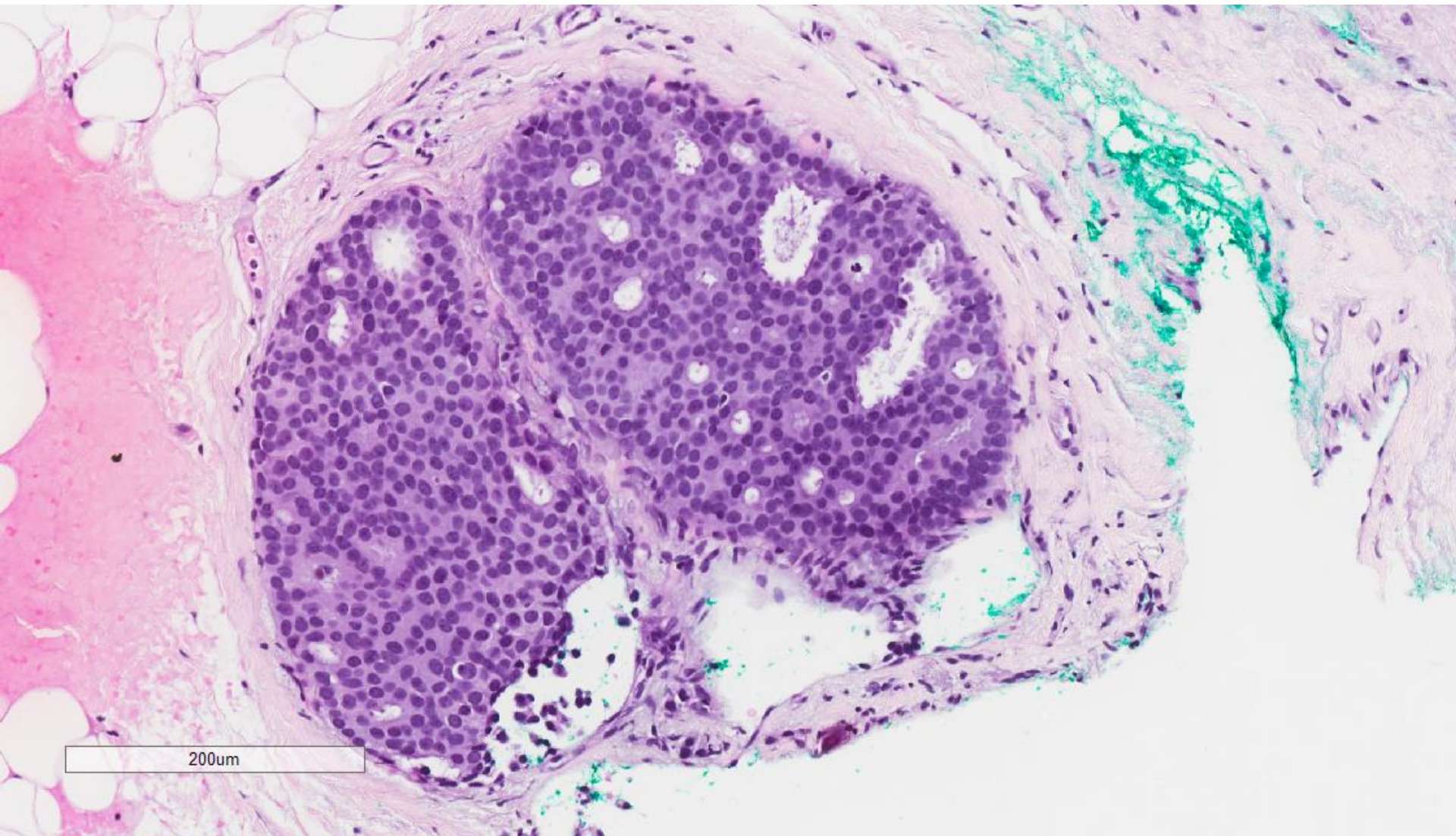
56 year old lady underwent stereotactic core biopsy of screen detected microcalcifications in the left breast.



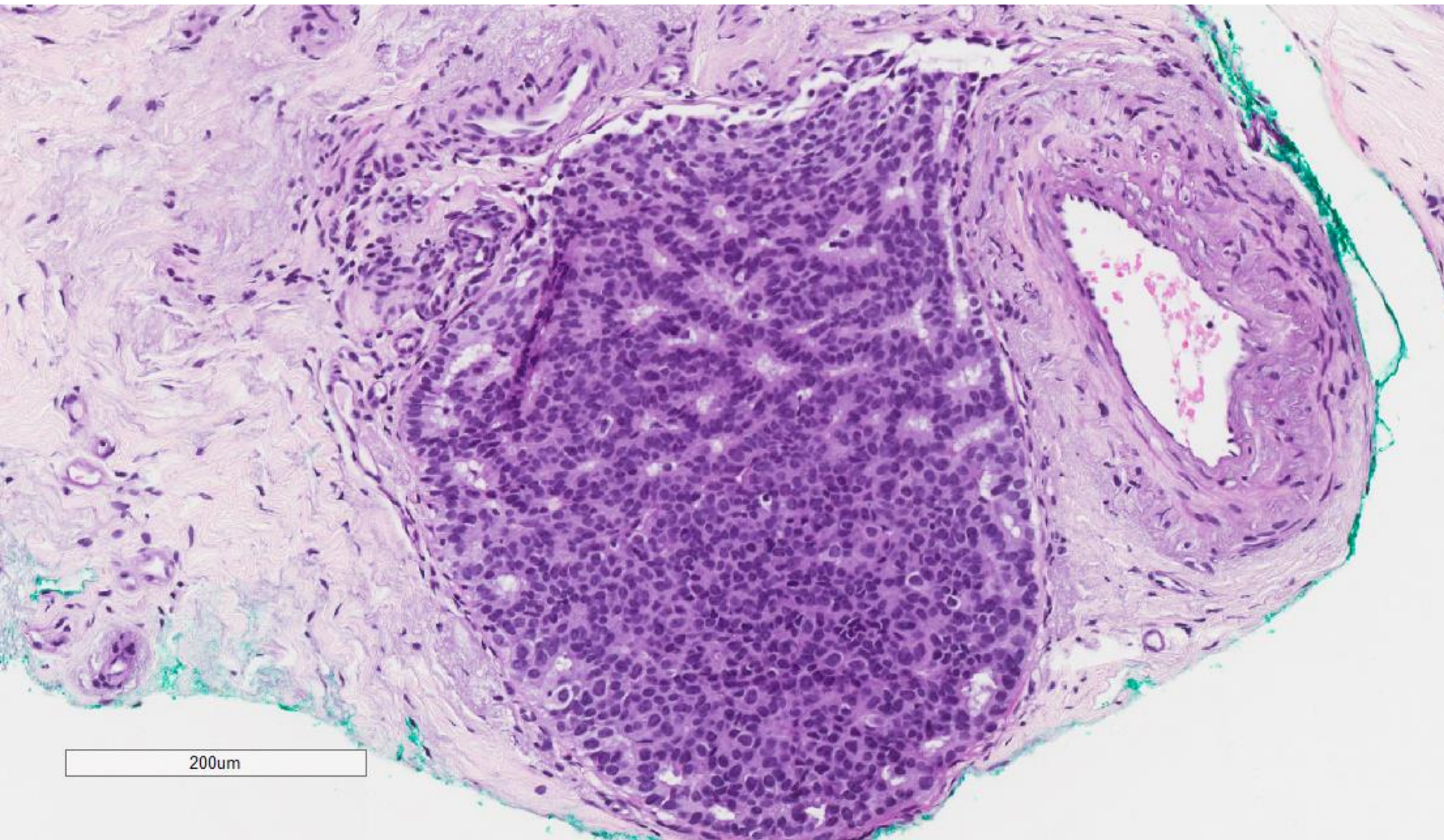
8mm



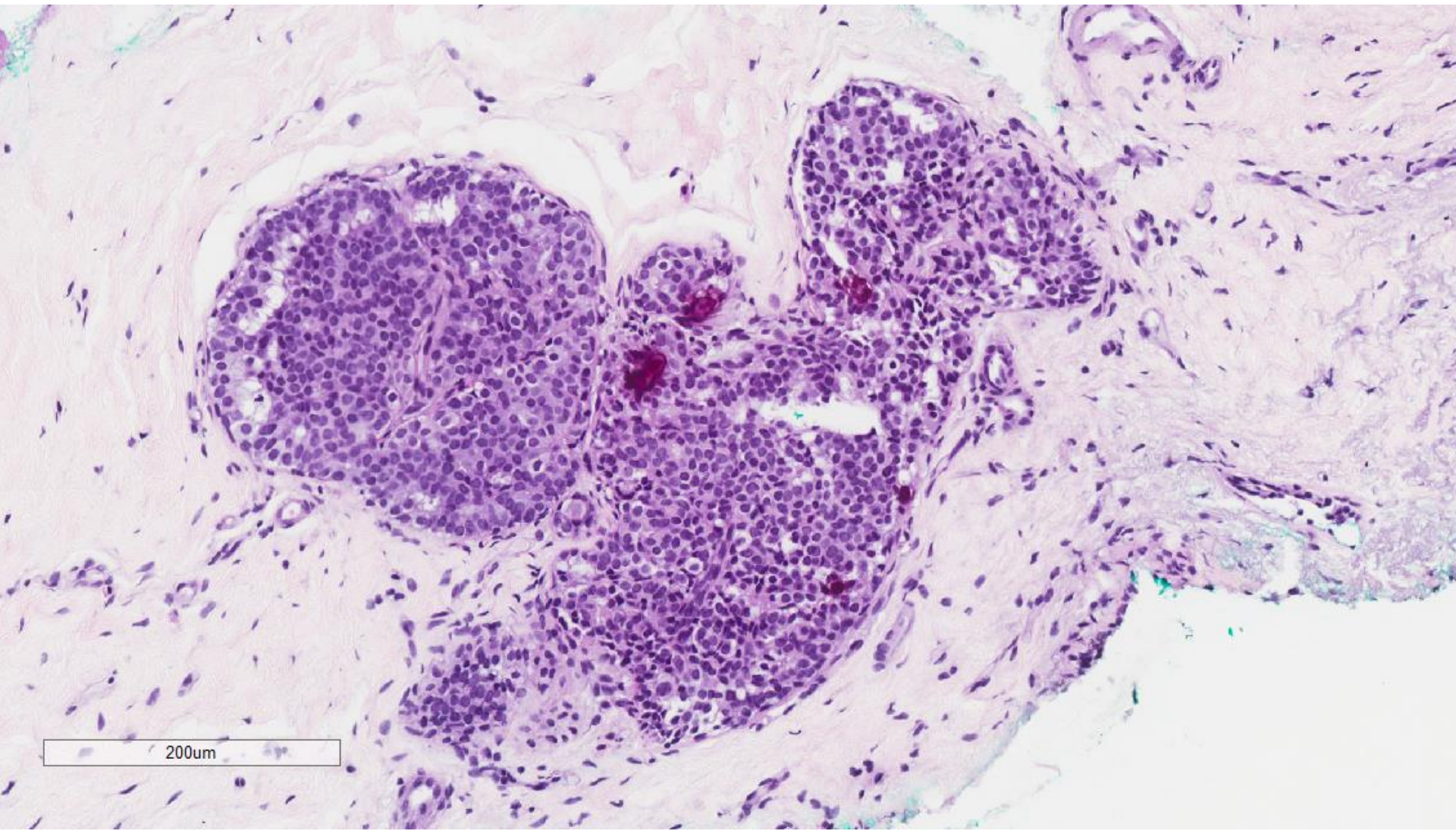
700um



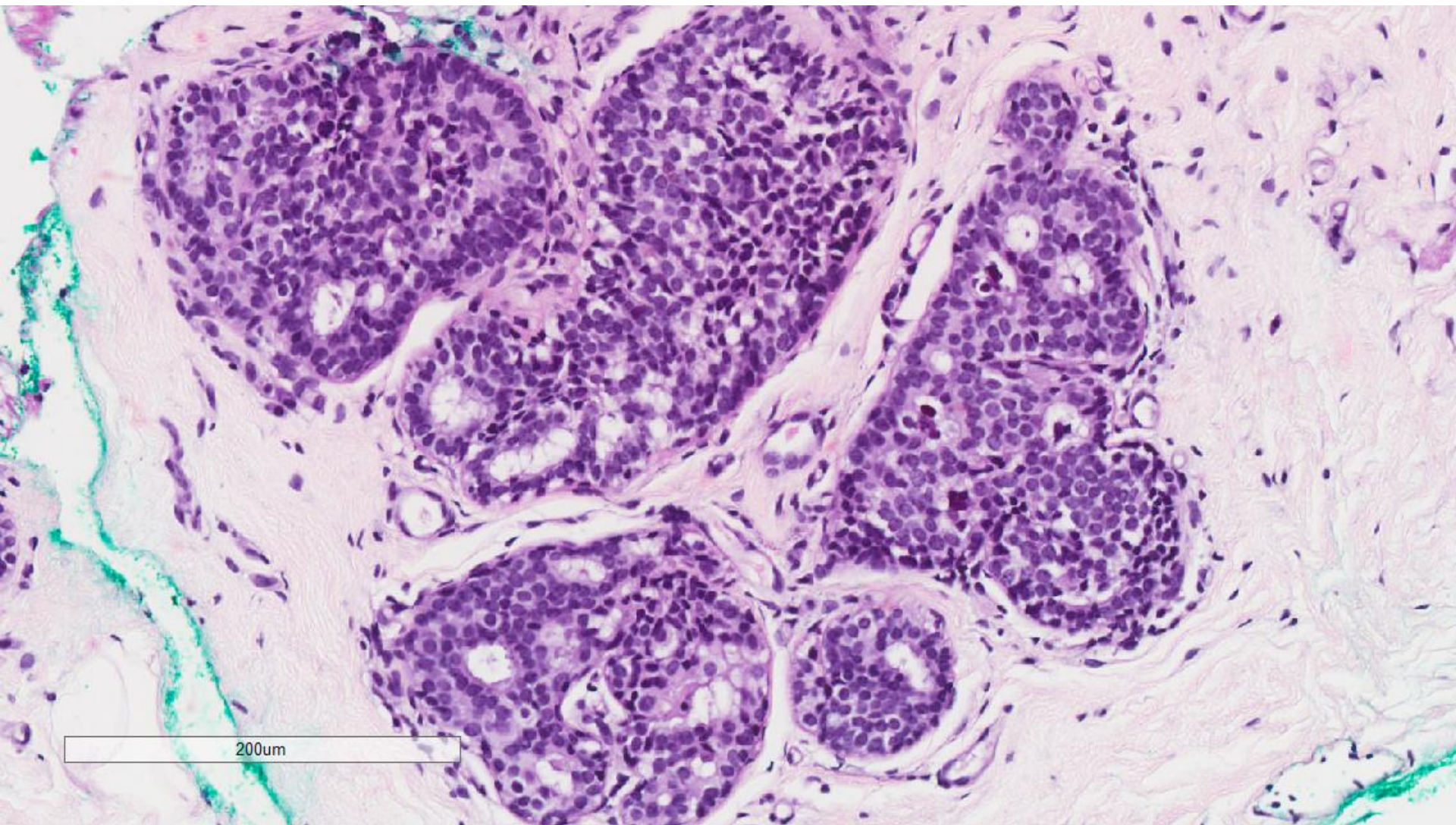
200um



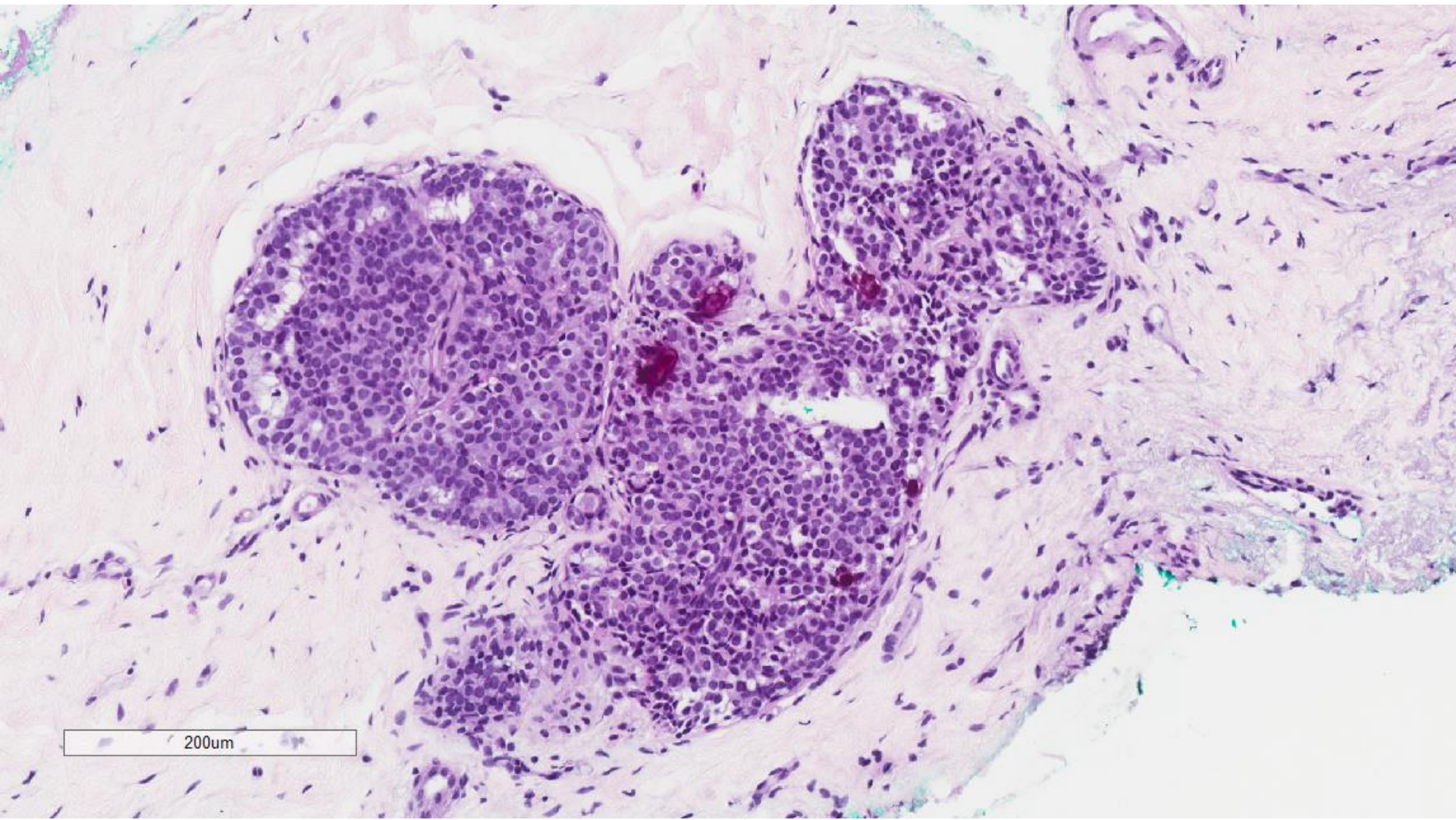
200um



200um



200um



200um



# Immunohistochemistry

- Diffuse ER positivity and reduced CK5/6 and CK14 staining of epithelial population in cribriform ducts.
- Multiple foci of involvement in several cores.

Ductal carcinoma in situ, low nuclear grade, with calcifications, without necrosis.

# Subsequent resection

- Residual foci of low nuclear grade ductal carcinoma in situ.