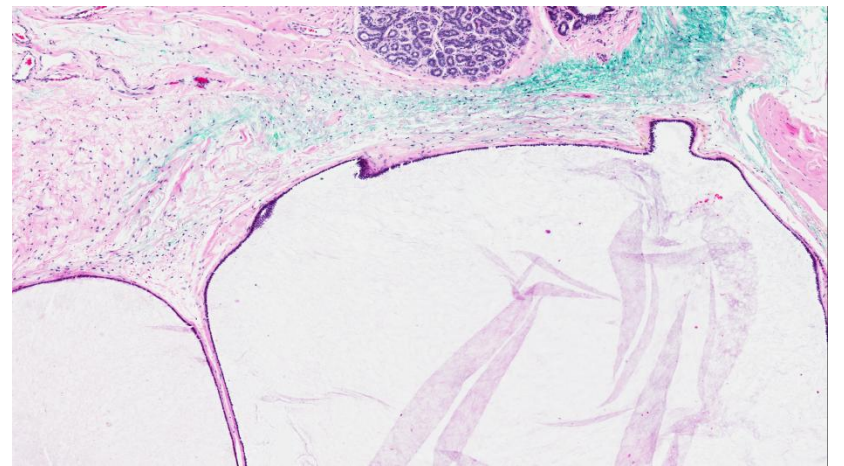
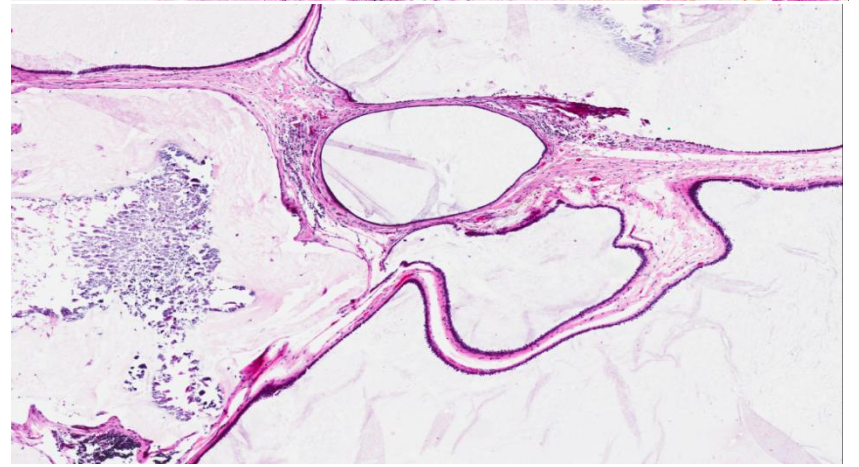
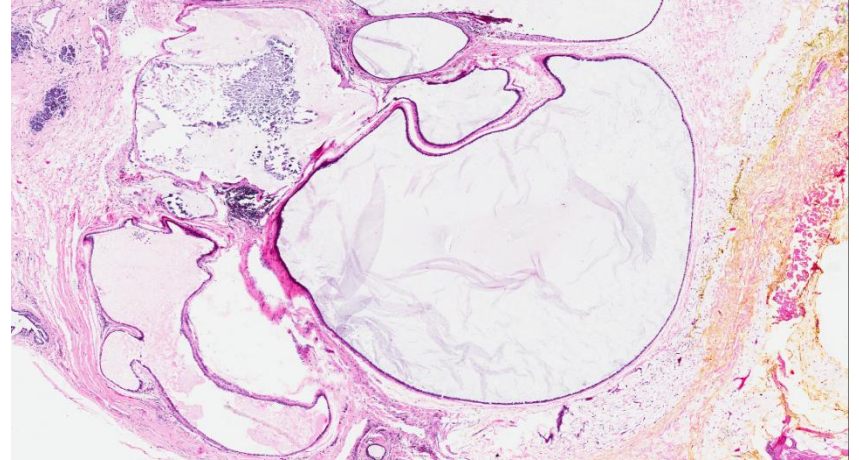
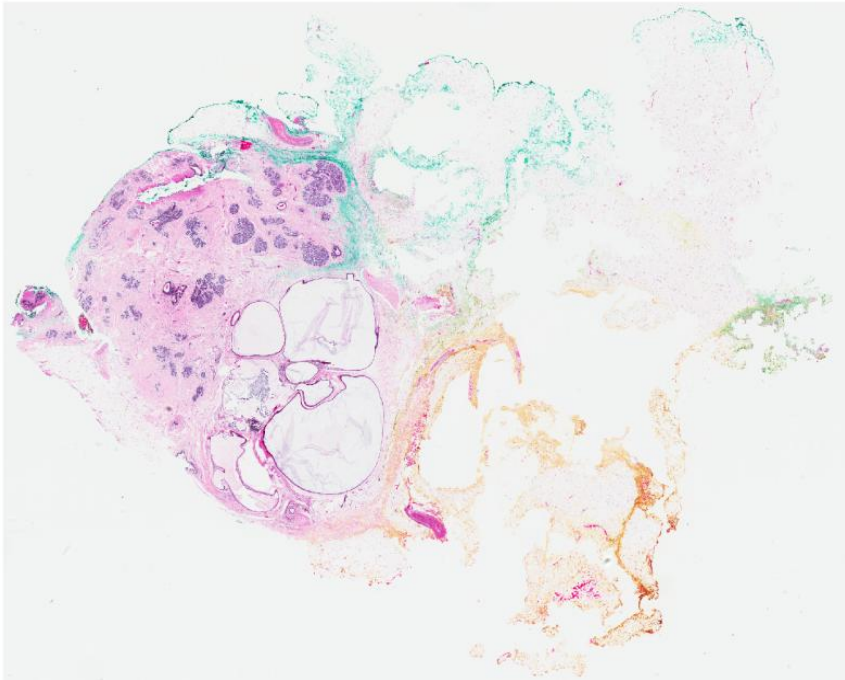


Set C.3

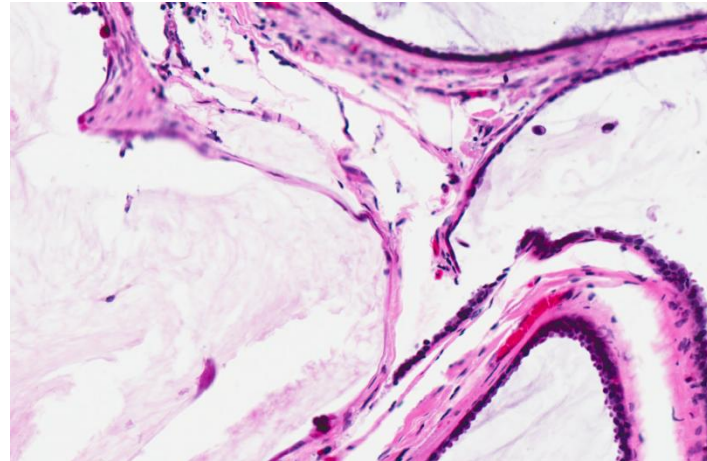
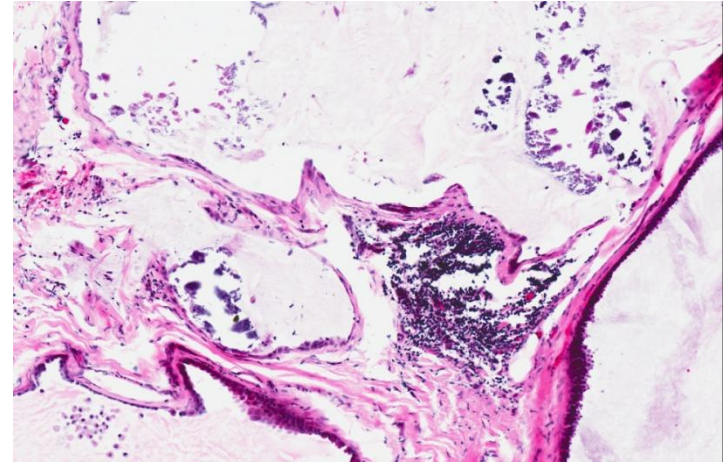
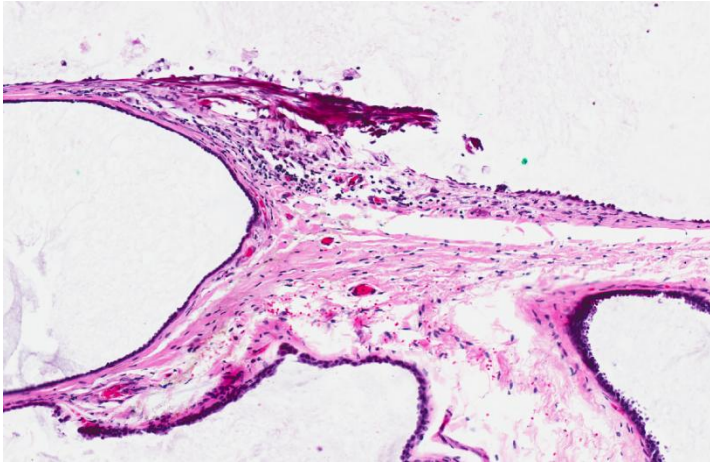
- 43 year old female with 'intermediate' breast calcifications on radiology. There was no palpable mass. Excision biopsy was performed.

(contributed by Dr Gary Tse)

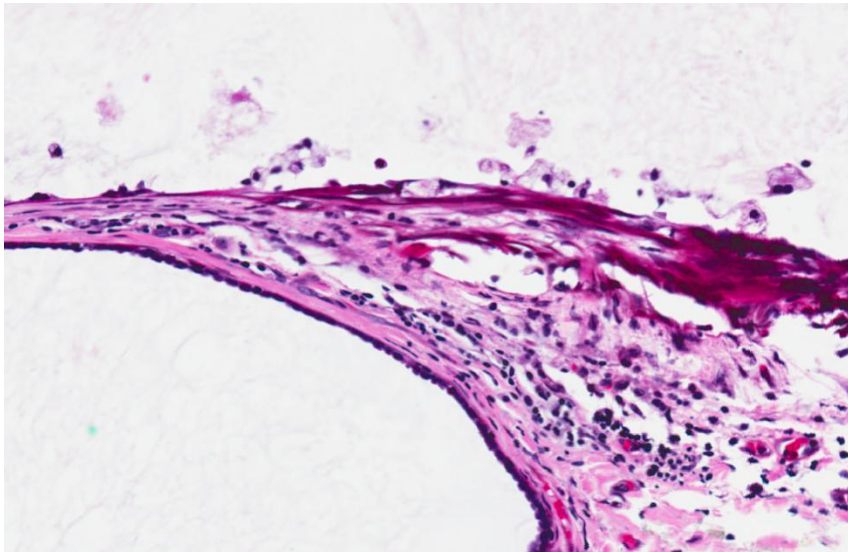
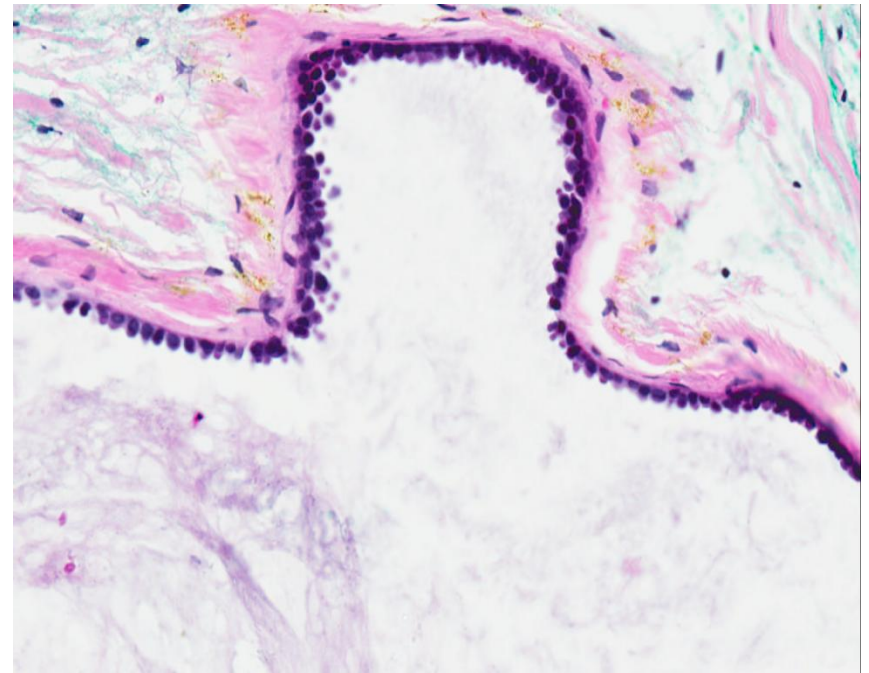
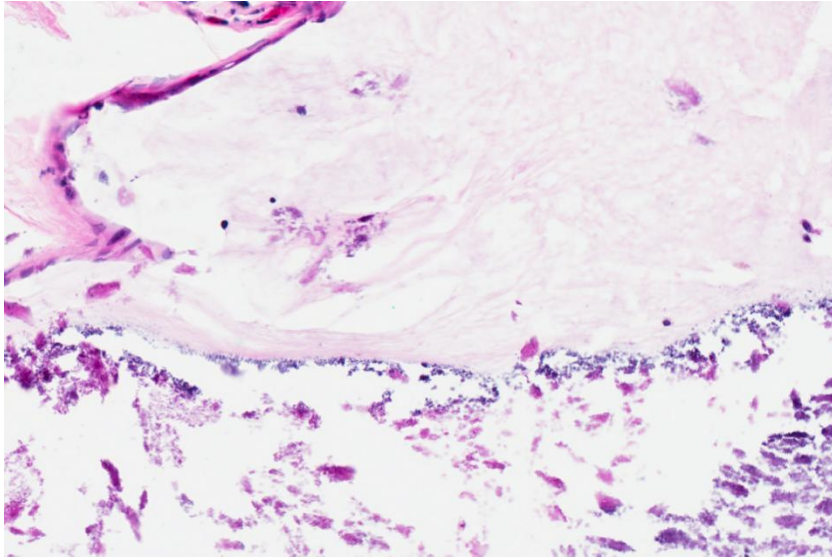
Set C.3



Set C.3



Set C.3



- Mucocele-like lesion, benign.

Learning points

- Approach to MLL on excision.
- Interpretation when mucin extends to margin.
- Correlation with radiology.